

HTA COVID-19 UPDATE

(Issued: 8/3/20 @ 4:00pm)

Novel Coronavirus in Hawaii

COVID-19 Positive* Cases

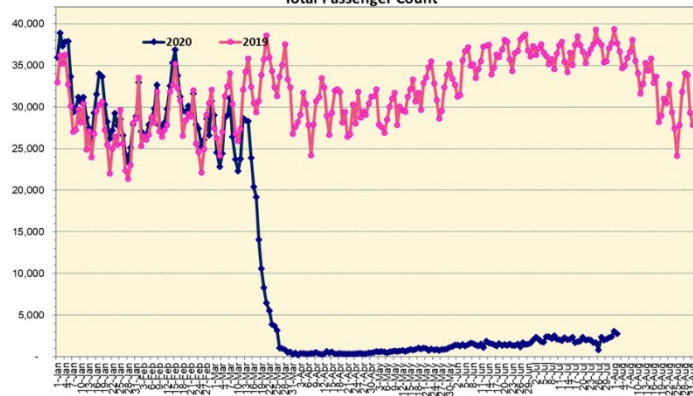
Cumulative totals as of 12:00 noon on August 3, 2020

Statewide	Total
Total Cases	2448 (207 new)
Released from Isolation†	1315
Required Hospitalization	201
Deaths	26
BY COUNTY	Total
Hawaii County	
Total Cases	117
Released from Isolation†	115
Required Hospitalization	4
Deaths	0
Honolulu County	
Total Cases	2083
Released from Isolation†	1023
Required Hospitalization	168
Deaths	19
Kauai County	
Total Cases	47
Released from Isolation†	44
Required Hospitalization	1
Deaths	0
Maui County	
Total Cases	178
Released from Isolation†	133
Required Hospitalization	26
Deaths	6
HI Residents diagnosed outside of HI	23
County Pending	0

*includes presumptive and confirmed cases, data are preliminary and subject to change; note that CDC provides case counts according to states of residence.

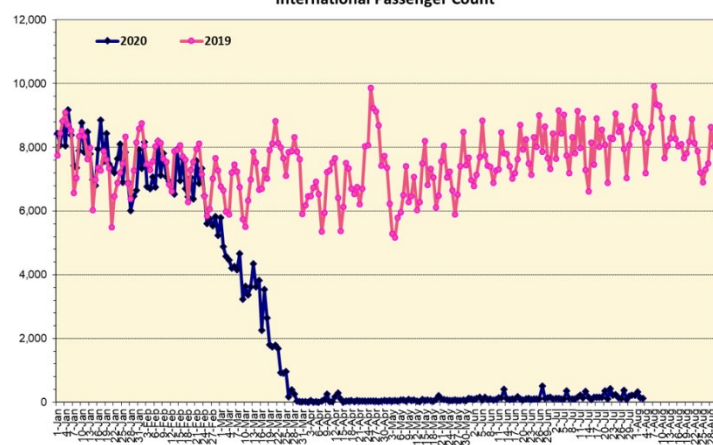
†Isolation should be maintained until at least 3 days (72 hours) after resolution of fever and myalgia without the use of antipyretics OR at least 7 days have passed since symptom onset, whichever is longer.

Total Passenger Count



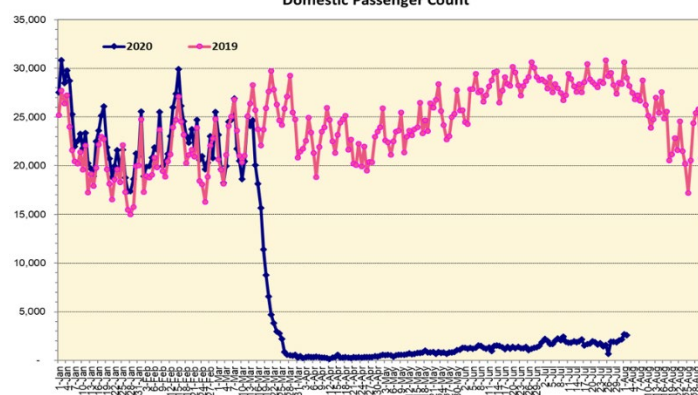
Note: Excludes flights from Canada

International Passenger Count



Note: Excludes flights from Canada

Domestic Passenger Count



Daily Passenger Count Table

08/02/2020	Domestic	International	Total
Oahu	2217	146	2363
Maui	223		223
Island of Hawaii	97		97
Kauai	50		50
State	2587	146	2733

8/3/20 Hawaii Passenger Arrivals by Air Update

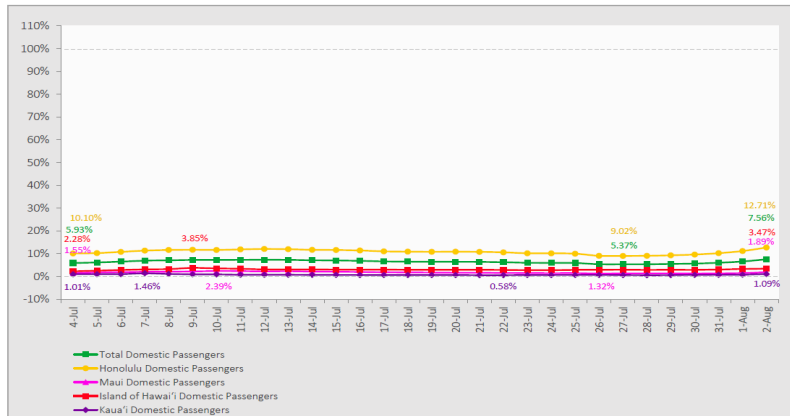
Yesterday, 2977 people arrived in Hawaii. This table shows the number of people who arrived by air from out of state yesterday and does not include interisland travel. This data was collected from the Hawaii DOT new Mandatory Travel Declaration Form.

	Kona	Maui	Oahu	Lihue	Total
Crew	7	25	203	7	242
Transit	1		155		156
Military			217		217
Exempt			309		309
Relocate to Hawaii	16	34	197	10	257
Returning Resident	43	130	896	14	1083
Visitor	48	59	589	17	713
Grand Total	115	248	2566	48	2977
Flights	2	4	22	1	29

Market Impact Update: <https://www.dropbox.com/08/03/20 HTA COVID19 Update>

7-Day Domestic by Island Moving Average Daily Passenger Volume

2020 Volume as Percentage of 2019 Volume
Through August 2, 2020



Source: HVCB analysis based on data from DBEDT
Note: Passenger volume figures include both visitors and residents.

Domestic by Island Month-to-Date and Year-to-Date Daily Passenger Volume

2020 Volume versus 2019 Volume
Through August 2, 2020

August 2020 (Month-to-Date through August 2)

	2020	2019	Volume Change	Percent Change
Honolulu	4,498	29,358	-24,860	-84.7%
Maui County	393	16,060	-15,667	-97.6%
Island of Hawai'i	306	6,903	-6,597	-95.6%
Kaua'i	93	4,561	-4,468	-98.0%
Total	5,290	56,882	-51,592	-90.7%

2020 (Year-to-Date through August 2)

	2020	2019	Volume Change	Percent Change
Honolulu	1,081,867	2,751,993	-1,670,126	-60.7%
Maui County	449,664	1,346,405	-896,741	-66.6%
Island of Hawai'i	222,508	618,930	-396,422	-64.0%
Kaua'i	150,373	465,700	-315,327	-67.7%
Total	1,904,412	5,183,028	-3,278,616	-63.3%

Source: HVCB analysis based on data from DBEDT
Note: Passenger volume figures include both visitors and residents. Total includes other international passengers. 2020 includes one additional day due to Leap Year (February 29th, 2020).

News Highlights

August 3, 2020

Hawaii News Now: [Workers, tourism industry leaders disagree over how ready hotels are to reopen](#)

Honolulu Star-Advertiser: [665 visitors arrive by air in Hawaii on Thursday](#)

KITV4: [Japan's 'travel bubble' with Hawaii could help local businesses during the coronavirus pandemic Pt. 2](#)

KHON2: [United Airlines plans to increase more flights to Hawaii](#)

KITV4: [Rural communities concerned about Oahu travel](#)

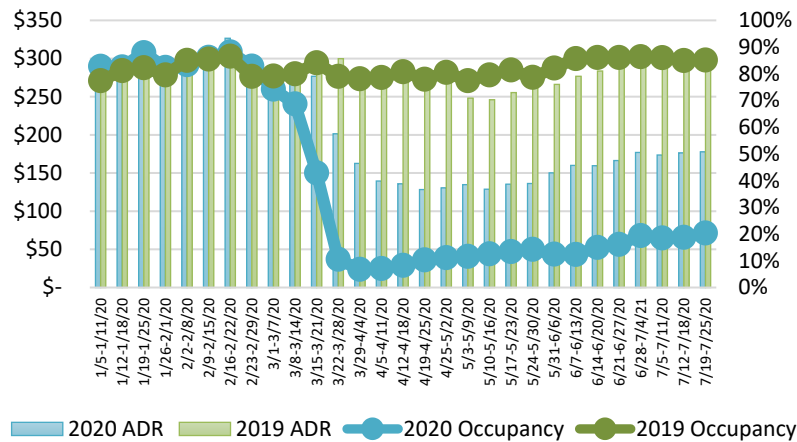
Honolulu Civil Beat: [Hawaii Needs A Better COVID-19 Communications Strategy](#)

Honolulu Civil Beat: [This Kauai Talk Show Is One Facebook Livestream You Don't Want To Miss](#)

Hawaii Public Radio: [The Latest: 9 First-Responders COVID-19 Positive; Lag In Tests Impacting Contact Tracing](#)

Hawaii Public Radio: [Hawaii Chamber To Ige, Caldwell: Reconsider Bar Closure, No More Delays](#)

State of Hawai'i Hotel Performance by Week - 2020 vs 2019



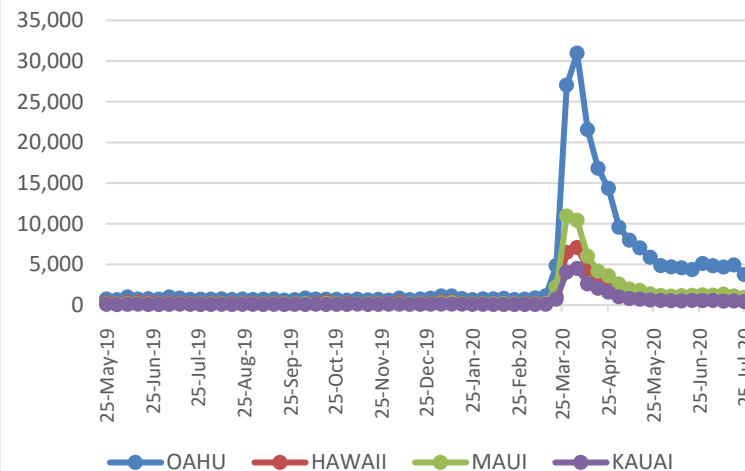
Source: STR, Inc. © Copyright 2020 Hawai'i Tourism Authority

Hawaii Hotel Performance Info:

For the week of July 19 – July 25, 2020

	Occupancy	ADR	RevPAR
State of Hawaii	20.4%	\$ 177.72	\$ 36.22
Oahu	22.7%	\$ 179.71	\$ 40.85
Maui County	10.2%	\$ 210.55	\$ 21.53
Kauai County	21.0%	\$ 192.55	\$ 40.41
Island of Hawaii	27.9%	\$ 139.99	\$ 39.07

2020 Initial Weekly Unemployment Claims by Island



Weekly Unemployment Initial Claims: July 25, 2020

State of Hawaii	5,919
C&C of Oahu	3,733
Hawaii County	698
Maui County	927
Kauai County	404
Agent (filed in Hawaii against another state)	157

Helpful Resources

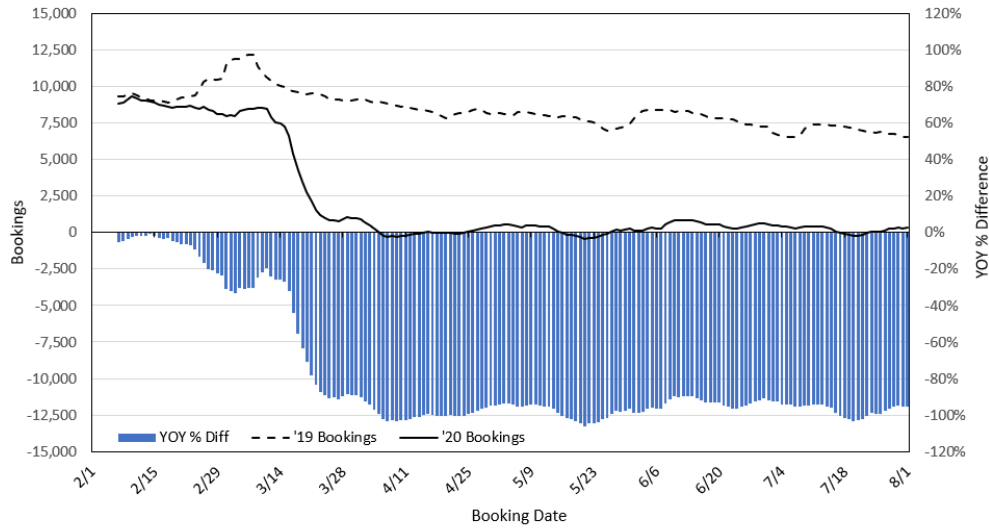
Department of Health
<https://hawaiicovid19.com/>

Department of Health
<https://health.hawaii.gov/dacd/advisories/novel-coronavirus-2019>

Dept. of Business, Economic Development & Tourism
<https://dbedt.hawaii.gov/economic/covid19/>

Department of Transportation
<https://hidot.hawaii.gov/coronavirus/>

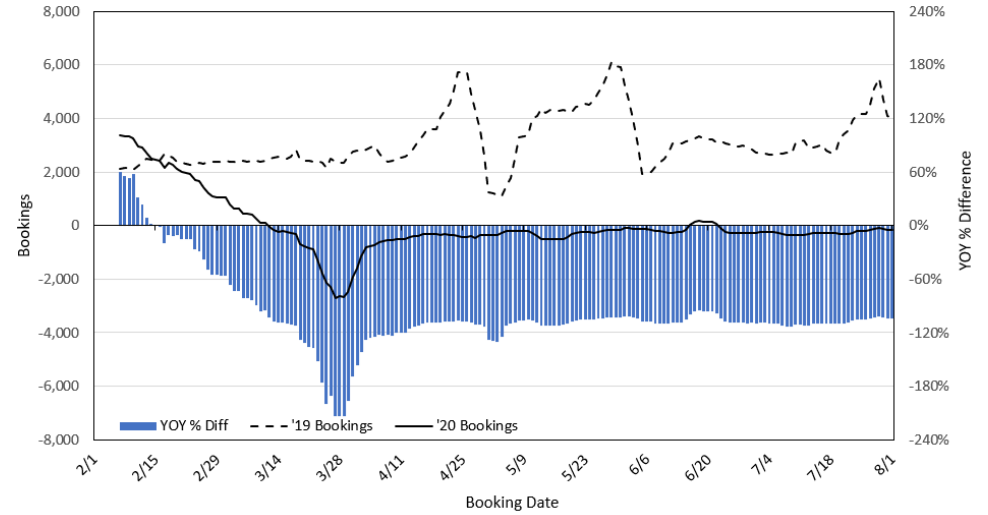
**Travel Agency Bookings to Hawaii for Future Arrivals*
Based on a 7-day Moving Average, 2020 vs 2019
U.S.**



*Future Arrivals refers to all arrivals that are 'future' relative to the referenced booking date.
Source: Global Agency Pro

Update: Aug 1, 2020

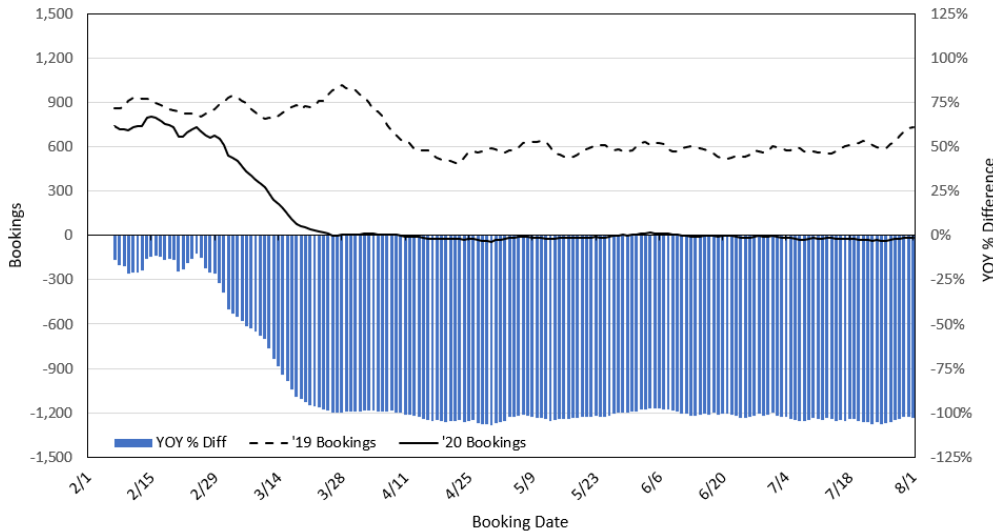
**Travel Agency Bookings to Hawaii for Future Arrivals*
Based on a 7-day Moving Average, 2020 vs 2019
Japan**



*Future Arrivals refers to all arrivals that are 'future' relative to the referenced booking date.
Source: Global Agency Pro

Update: Aug 1, 2020

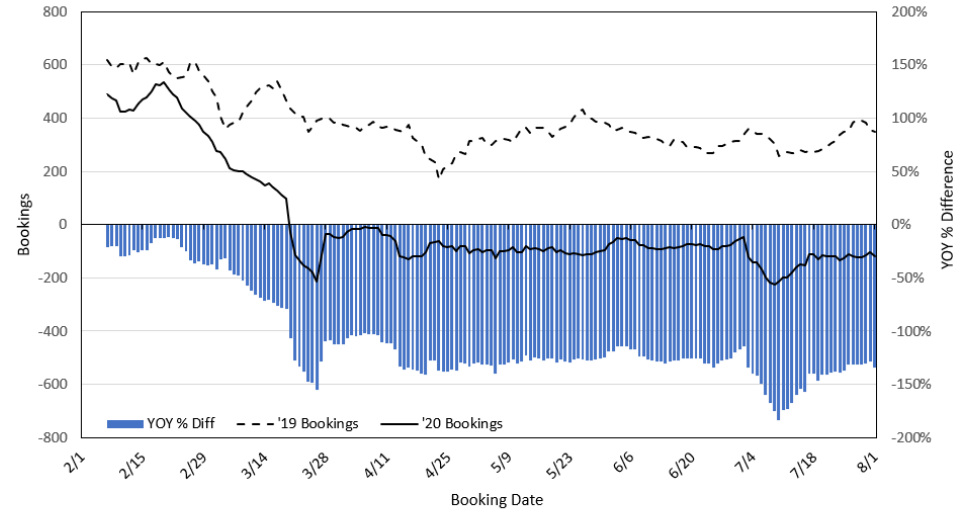
**Travel Agency Bookings to Hawaii for Future Arrivals*
Based on a 7-day Moving Average, 2020 vs 2019
Canada**



*Future Arrivals refers to all arrivals that are 'future' relative to the referenced booking date.
Source: Global Agency Pro

Update: Aug 1, 2020

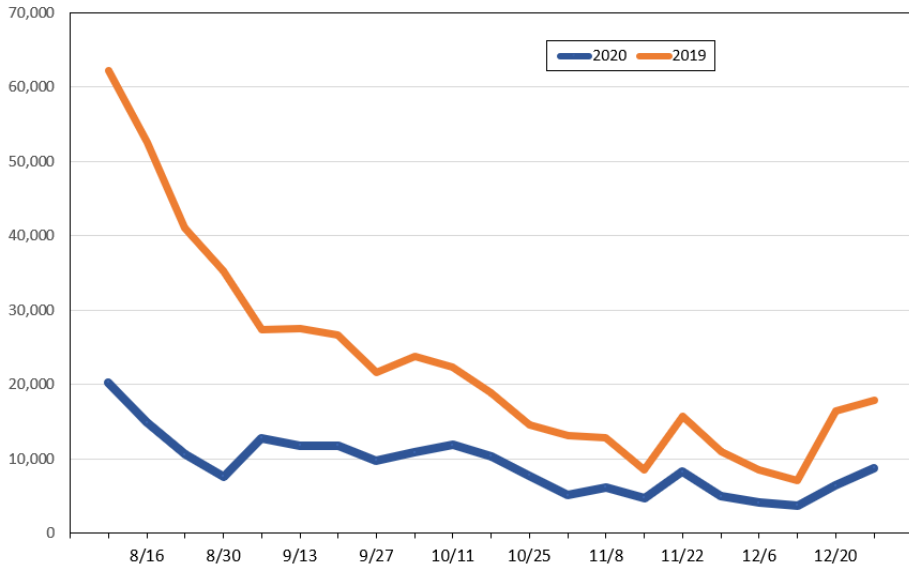
**Travel Agency Bookings to Hawaii for Future Arrivals*
Based on a 7-day Moving Average, 2020 vs 2019
Australia**



*Future Arrivals refers to all arrivals that are 'future' relative to the referenced booking date.
Source: Global Agency Pro

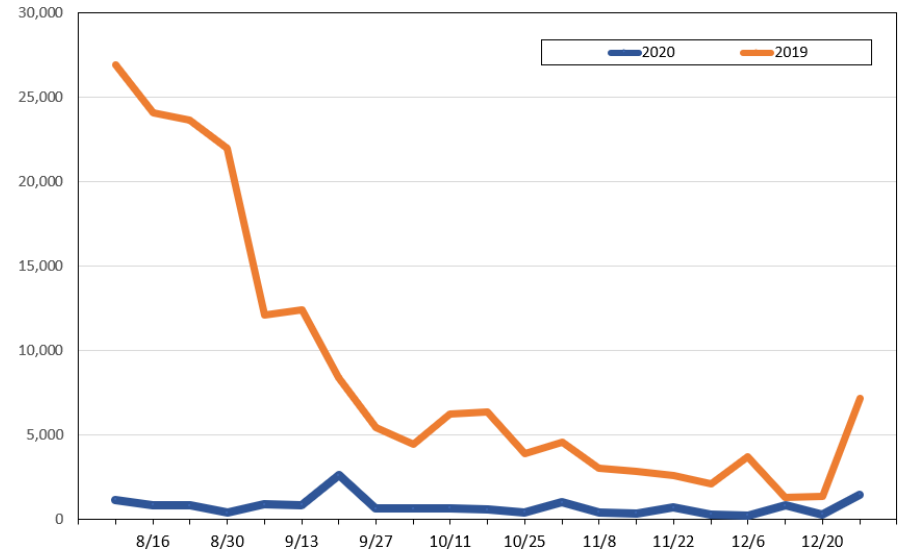
Update: Aug 1, 2020

Travel Agency Weekly Bookings for Future Travel to Hawai'i as of August 1, 2020
U.S.



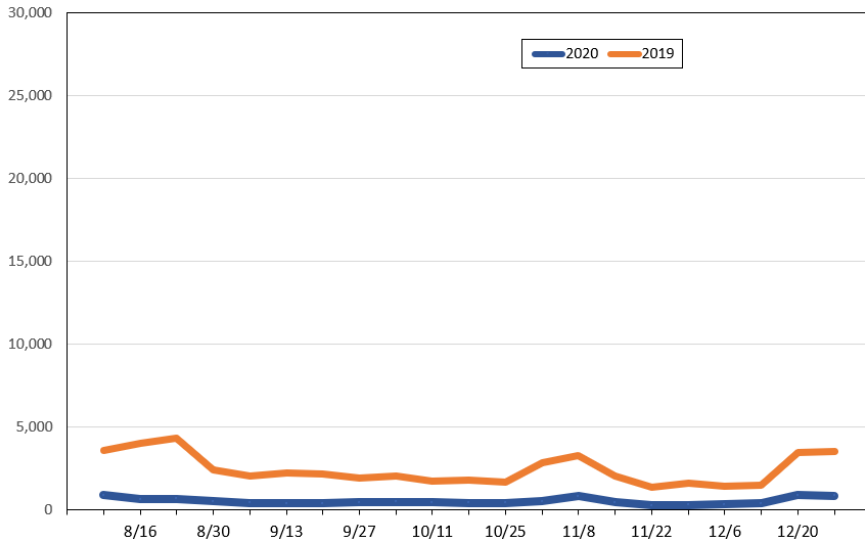
Source: Global Agency Pro, as of August 1, 2020

Travel Agency Weekly Bookings for Future Travel to Hawai'i as of August 1, 2020
Japan



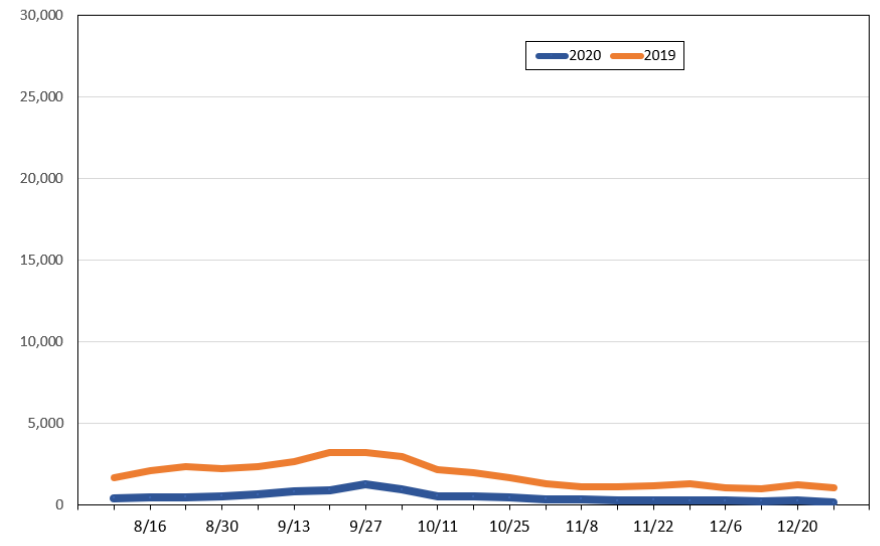
Source: Global Agency Pro, as of August 1, 2020

Travel Agency Weekly Bookings for Future Travel to Hawai'i as of August 1, 2020
Canada



Source: Global Agency Pro, as of August 1, 2020

Travel Agency Weekly Bookings for Future Travel to Hawai'i as of August 1, 2020
Australia



Source: Global Agency Pro, as of August 1, 2020