

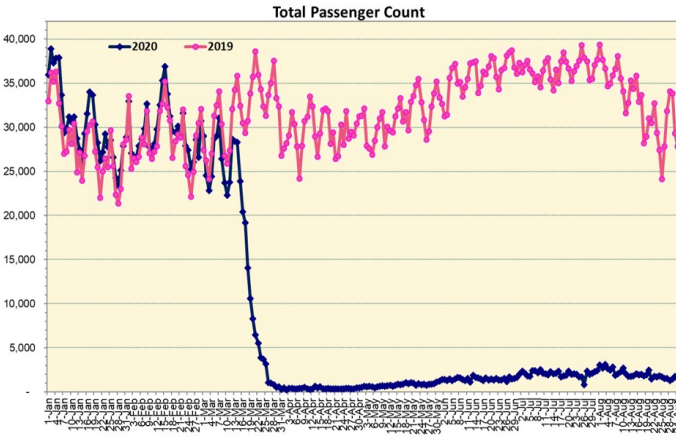
HTA COVID-19 UPDATE

(Issued: 9/1/20 @ 6:00pm)

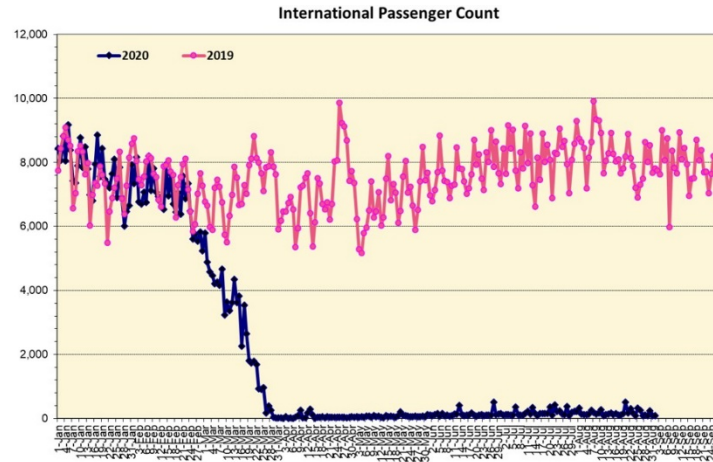
Novel Coronavirus in Hawaii

COVID-19 Positive* Cases

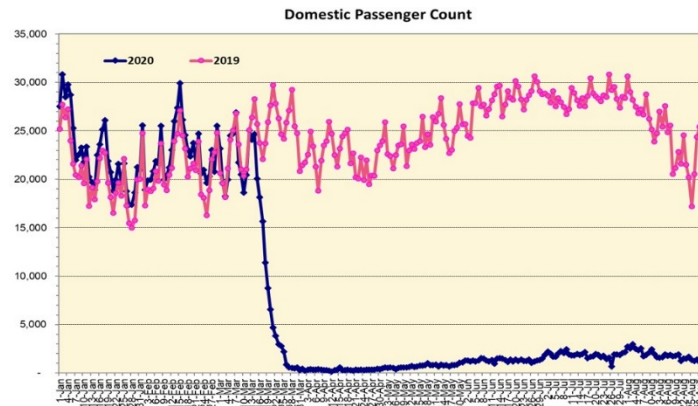
Cumulative totals as of 12:00 noon on September 1, 2020



Note: Excludes flights from Canada



Note: Excludes flights from Canada



Daily Passenger Count Table

08/31/2020	Domestic	International	Total
Oahu	1196	90	1286
Maui	136		136
Island of Hawaii	90		90
Kauai	30		30
State	1452	90	1542

9/1/20 Hawaii Passenger Arrivals by Air Update

Yesterday, 2099 people arrived in Hawaii. This table shows the number of people who arrived by air from out of state yesterday and does not include interisland travel. This data was collected from the Hawaii DOT new Mandatory Travel Declaration Form.

	Kona	Maui	Oahu	Lihue	Total
Crew	8	20	100	10	138
Transit		2	146		148
Military			124		124
Exempt			222		222
Relocate to Hawaii	10	14	183	10	217
Returning Resident	42	86	625	29	782
Visitor	39	34	357	38	468
Grand Total	99	156	1757	87	2099
Flights	5	3	24	1	33

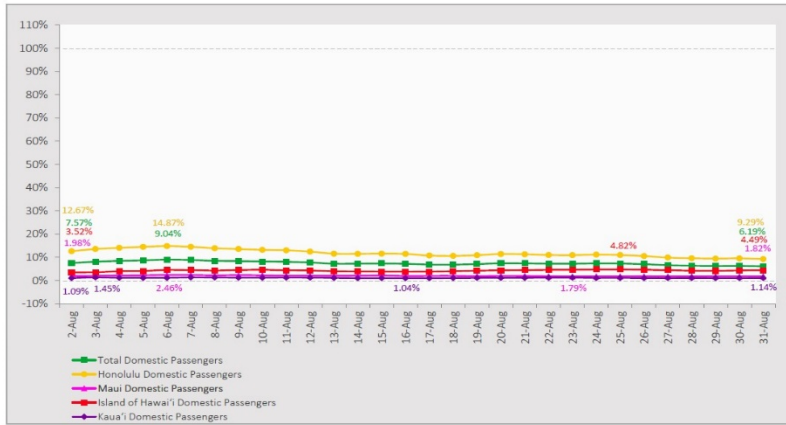
Statewide	Total
Total Cases	8653 (181 new)
Released from Isolation†	2634
Required Hospitalization	532
Deaths	74
BY COUNTY	Total
Hawaii County	
Total Cases	383
Released from Isolation†	190
Required Hospitalization	16
Deaths	3
Honolulu County	
Total Cases	7848
Released from Isolation†	2197
Required Hospitalization	468
Deaths	62
Kauai County	
Total Cases	57
Released from Isolation†	55
Required Hospitalization	1
Deaths	0
Maui County	
Total Cases	340
Released from Isolation†	192
Required Hospitalization	45
Deaths	8
HI Residents diagnosed outside of HI	25
County Pending	0

*includes presumptive and confirmed cases, data are preliminary and subject to change; note that CDC provides case counts according to states of residence.

†Isolation should be maintained until at least 3 days (72 hours) after resolution of fever and myalgia without the use of antipyretics OR at least 7 days have passed since symptom onset, whichever is longer.

7-Day Domestic by Island Moving Average Daily Passenger Volume

2020 Volume as Percentage of 2019 Volume
Through August 31, 2020



Source: HVCB analysis based on data from DBEDT
Note: Passenger volume figures include both visitors and residents.

Domestic by Island Month-to-Date and Year-to-Date Daily Passenger Volume

2020 Volume versus 2019 Volume
Through August 31, 2020

August 2020 (Month-to-Date through August 31)

	2020	2019	Volume Change	Percent Change
Honolulu	48,507	421,229	-372,722	-88.5%
Maui County	4,200	205,479	-201,279	-98.0%
Island of Hawai'i	3,578	85,498	-81,920	-95.8%
Kaua'i	801	65,598	-64,797	-98.8%
Total	57,086	777,804	-720,718	-92.7%

2020 (Year-to-Date through August 31)

	2020	2019	Volume Change	Percent Change
Honolulu	1,125,876	3,143,864	-2,017,988	-64.2%
Maui County	453,482	1,535,824	-1,082,342	-70.5%
Island of Hawai'i	225,780	697,525	-471,745	-67.6%
Kaua'i	151,081	526,737	-375,656	-71.3%
Total	1,956,219	5,903,950	-3,947,732	-66.9%

Source: HVCB analysis based on data from DBEDT
Notes: Passenger volume figures include both visitors and residents. Total includes other international passengers. 2020 includes one additional day due to Leap Year (February 29th, 2020).

News Highlights

September 1, 2020

KITV4: [Honolulu mayor confirms more than 1,700 surge tests were mislabeled](#)

KHON2: [Sun Noodle Factory in Honolulu temporarily shuts down after some employees test positive for COVID-19](#)

KHON2: [Lanai dealt huge economic blow with Four Seasons furloughs](#)

Honolulu Civil Beat: [Please Help Save The Waikiki Aquarium](#)

The Garden Island: [Hawaii travelers to complete mandatory online application](#)

The Garden Island: [COVID testing much preferable to quarantine](#)

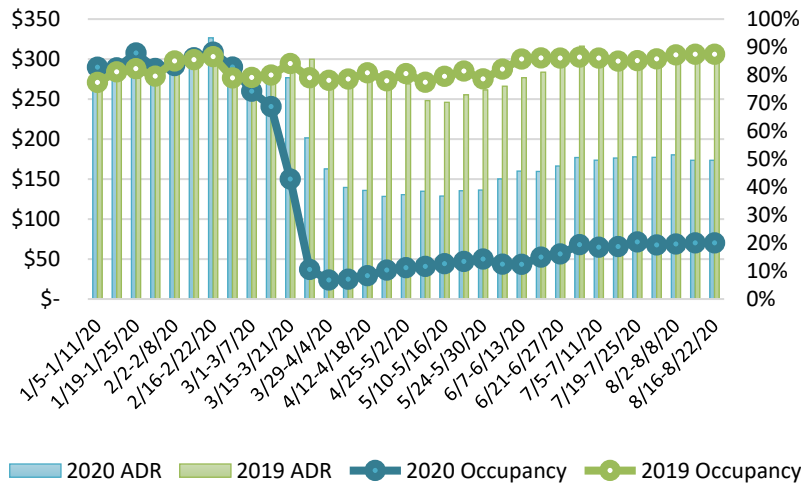
West Hawaii Today: [Kim: Despite rise in cases, no lockdown needed](#)

Travel Weekly: [Hawaii installing facial recognition technology to aid in virus detection at airports](#)

Travel Market Report: [Hawaii Provides Tourism Updates, Tools, and Resources for Advisors](#)

AFAR: [Hawaii Visitors Now Have to Wait Until at Least October to Forgo Quarantine](#)

State of Hawai'i Hotel Performance by Week - 2020 vs 2019



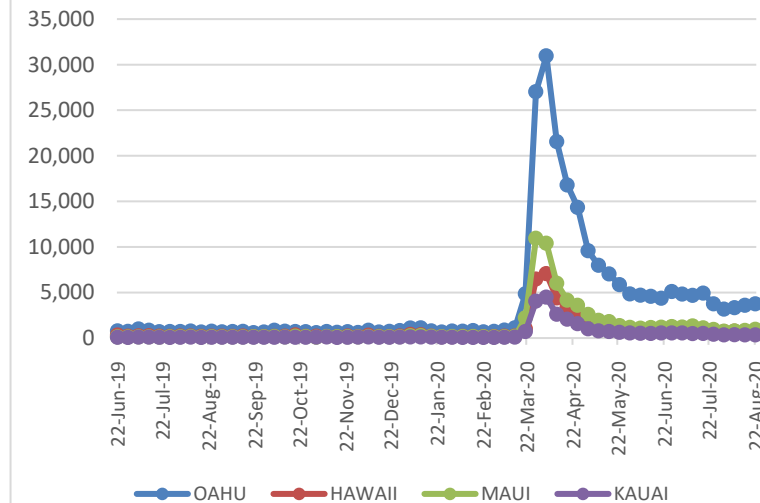
Source: STR, Inc. © Copyright 2020 Hawai'i Tourism Authority

Hawaii Hotel Performance Info:

For the week of August 16 – August 22, 2020

	Occupancy	ADR	RevPAR
State of Hawaii	22.4%	\$ 153.74	\$ 34.41
Oahu	26.5%	\$ 154.09	\$ 40.90
Maui County	16.1%	\$ 169.59	\$ 27.24
Kauai County	13.0%	\$ 165.23	\$ 21.42
Island of Hawaii	22.5%	\$ 128.65	\$ 28.94

2020 Initial Weekly Unemployment Claims by Island



Weekly Unemployment Initial Claims: August 22, 2020

State of Hawaii	5,785
C&C of Oahu	3,741
Hawaii County	646
Maui County	941
Kauai County	340
Agent (filed in Hawaii against another state)	127

Helpful Resources

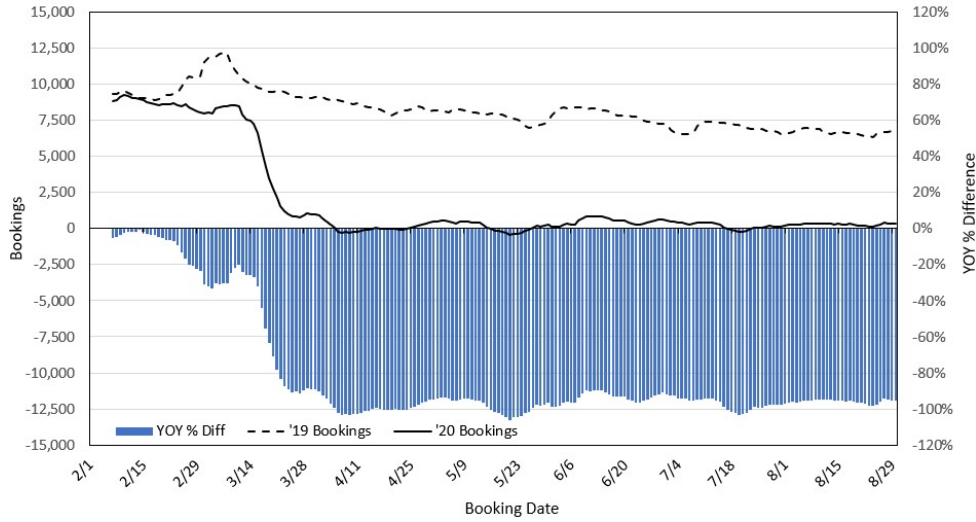
Department of Health
<https://hawaiiocovid19.com/>

Department of Health
<https://health.hawaii.gov/docd/advisories/novel-coronavirus-2019>

Dept. of Business, Economic Development & Tourism
<https://dbedt.hawaii.gov/economic/covid19/>

Department of Transportation
<https://hidot.hawaii.gov/coronavirus/>

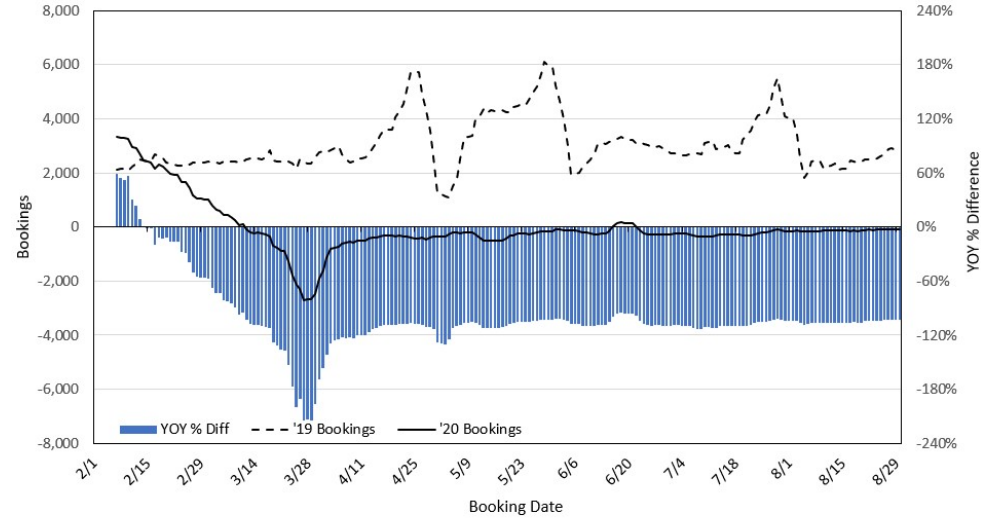
Travel Agency Bookings to Hawaii for Future Arrivals* Based on a 7-day Moving Average, 2020 vs 2019 U.S.



*Future Arrivals refers to all arrivals that are 'future' relative to the referenced booking date.
Source: Global Agency Pro

Update: Aug 30, 2020

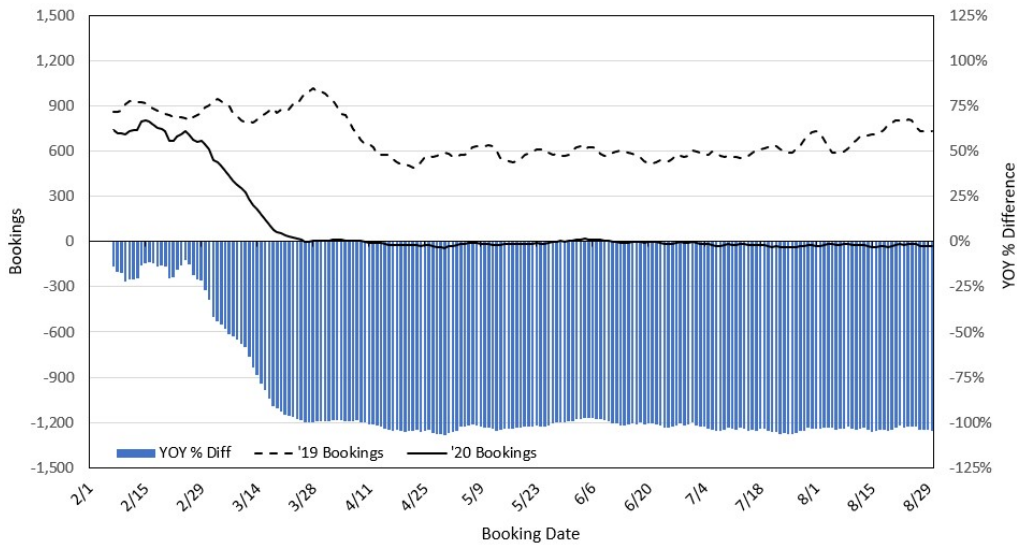
Travel Agency Bookings to Hawaii for Future Arrivals* Based on a 7-day Moving Average, 2020 vs 2019 Japan



*Future Arrivals refers to all arrivals that are 'future' relative to the referenced booking date.
Source: Global Agency Pro

Update: Aug 30, 2020

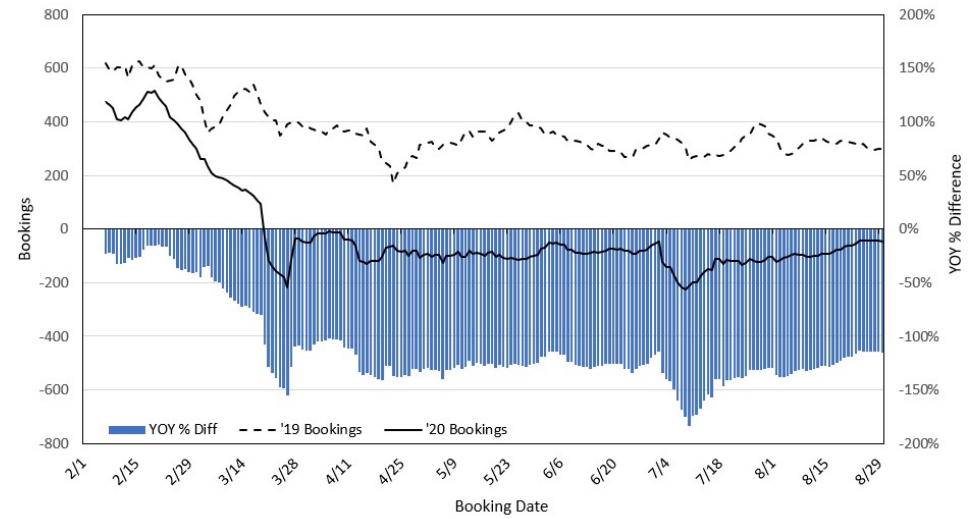
Travel Agency Bookings to Hawaii for Future Arrivals* Based on a 7-day Moving Average, 2020 vs 2019 Canada



*Future Arrivals refers to all arrivals that are 'future' relative to the referenced booking date.
Source: Global Agency Pro

Update: Aug 30, 2020

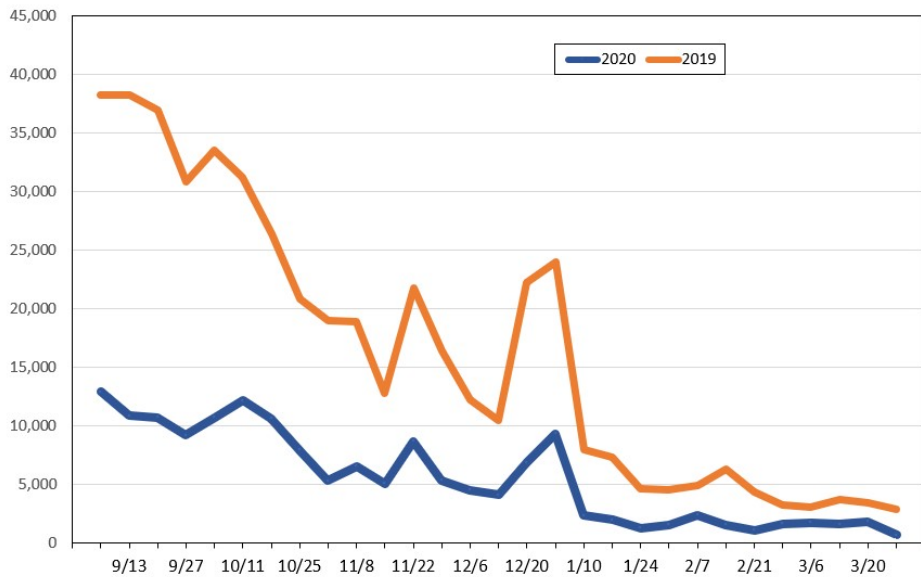
Travel Agency Bookings to Hawaii for Future Arrivals* Based on a 7-day Moving Average, 2020 vs 2019 Australia



*Future Arrivals refers to all arrivals that are 'future' relative to the referenced booking date.
Source: Global Agency Pro

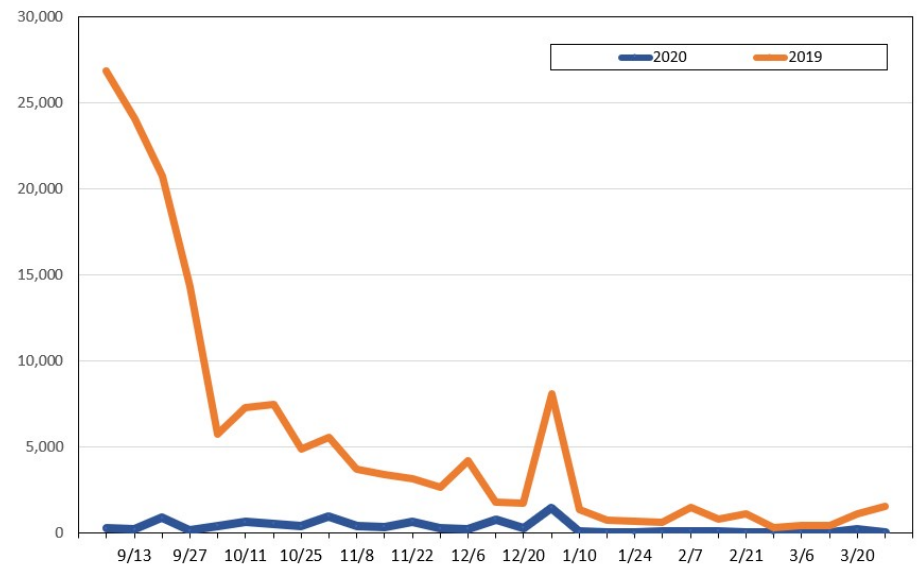
Update: Aug 30, 2020

Travel Agency Weekly Bookings for Future Travel to Hawai'i as of August 30, 2020
U.S.



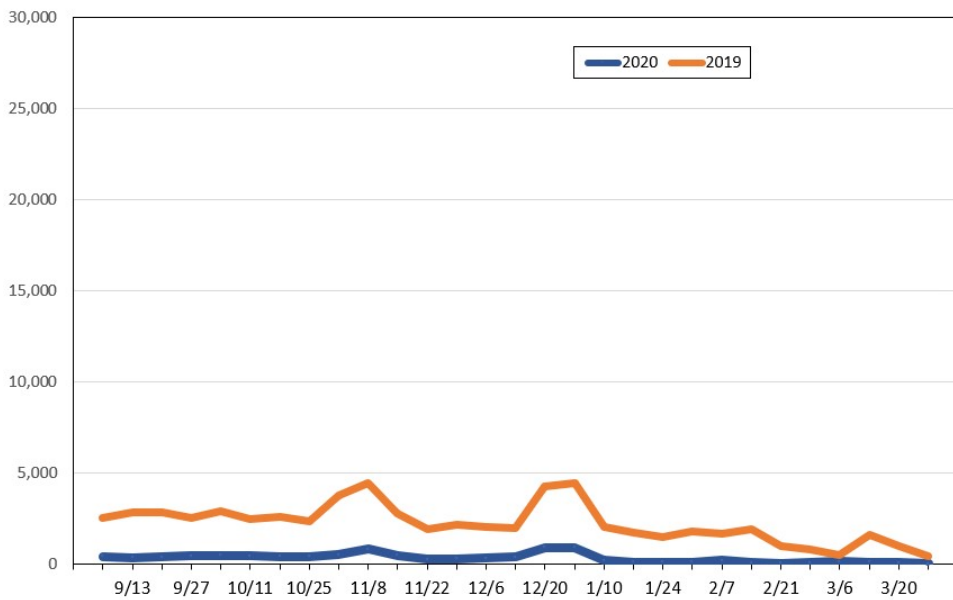
Source: Global Agency Pro, as of August 30, 2020

Travel Agency Weekly Bookings for Future Travel to Hawai'i as of August 30, 2020
Japan



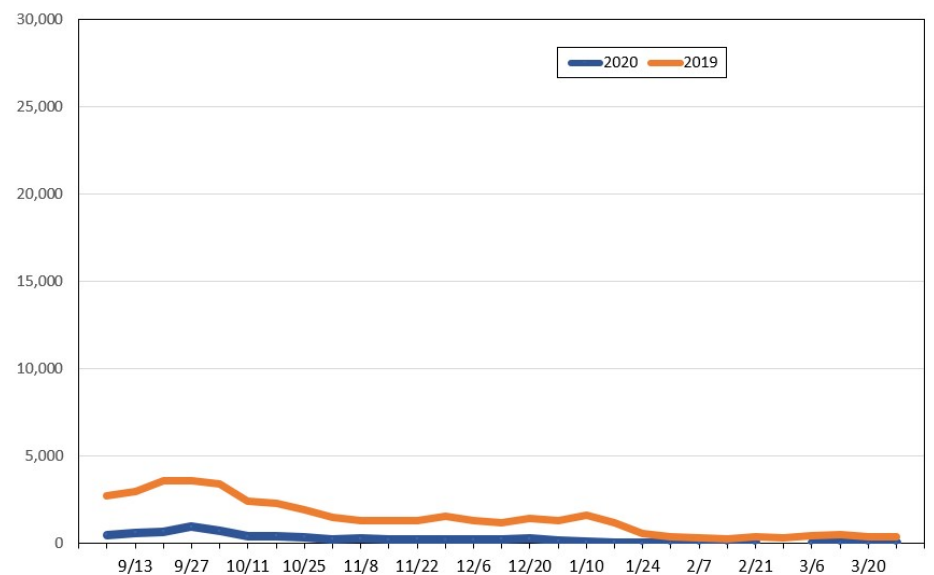
Source: Global Agency Pro, as of August 30, 2020

Travel Agency Weekly Bookings for Future Travel to Hawai'i as of August 30, 2020
Canada



Source: Global Agency Pro, as of August 30, 2020

Travel Agency Weekly Bookings for Future Travel to Hawai'i as of August 30, 2020
Australia



Source: Global Agency Pro, as of August 30, 2020