

HTA COVID-19 UPDATE

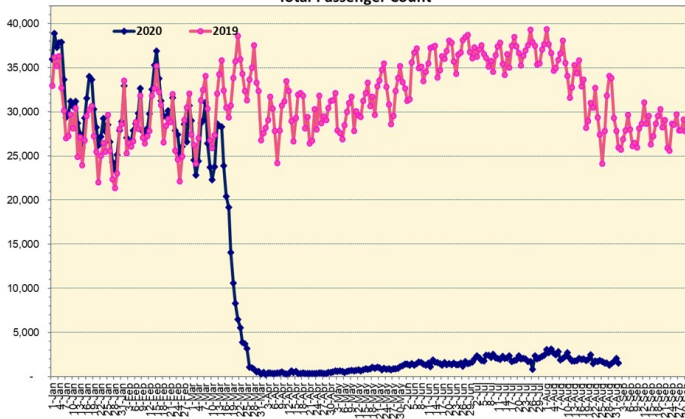
(Issued: 9/2/20 @ 5:00pm)

Novel Coronavirus in Hawaii

COVID-19 Positive* Cases

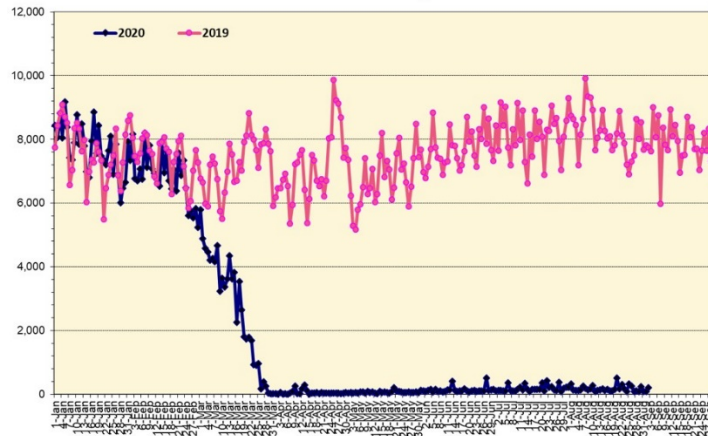
Cumulative totals as of 12:00 noon on September 2, 2020

Total Passenger Count



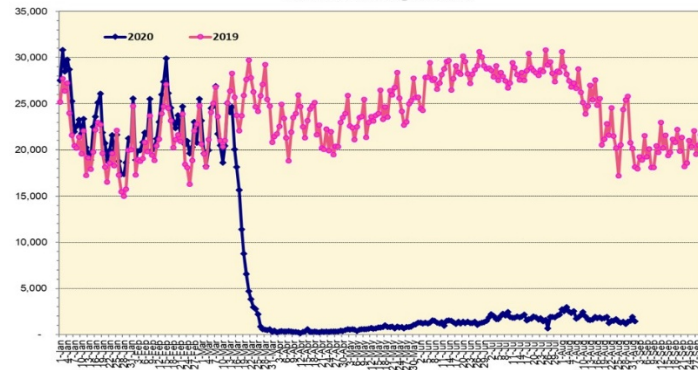
Note: Excludes flights from Canada

International Passenger Count



Note: Excludes flights from Canada

Domestic Passenger Count



Daily Passenger Count Table

09/01/2020	Domestic	International	Total
Oahu	1242	84	1326
Maui	100		100
Island of Hawaii	107		107
Kauai	0		0
State	1449	84	1533

Market Impact Update: <https://www.dropbox.com/09/02/20 HTA COVID19 Update>

9/2/20 Hawaii Passenger Trans-Pacific Arrivals by Air	Honolulu (HNL)	Kahului (OGG)	Kona (KOA)	Lihue (LIH)	Grand Total
Airline Crew	188	17	19	0	224
Essential Worker	62	24	23	2	111
Intended Resident	251	39	26	8	324
Military or Federal Government	155	0	0	3	158
Other	66	5	14	6	91
Other Business	95	11	28	7	141
Pleasure/Vacation	78	17	21	3	119
Returning Resident	433	94	63	11	601
To Attend School	53	0	5	0	58
Transit	N/A	N/A	N/A	N/A	N/A
Visiting Friends or Relatives	225	38	48	10	321
Grand Total	1,606	245	247	50	2,148

Source: Safe Travels program developed by the State of Hawaii Office of Enterprise Technology Services

Note: The data is preliminary and subject to change

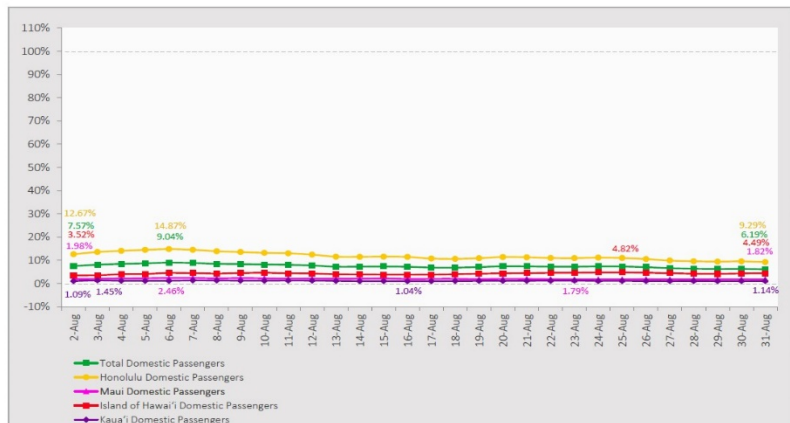
Statewide	Total
Total Cases	8991 (339 new)
Released from Isolation†	2689
Required Hospitalization	552
Deaths	75
BY COUNTY	Total
Hawaii County	
Total Cases	418
Released from Isolation†	198
Required Hospitalization	16
Deaths	3
Honolulu County	
Total Cases	8149
Released from Isolation†	2243
Required Hospitalization	488
Deaths	63
Kauai County	
Total Cases	57
Released from Isolation†	55
Required Hospitalization	1
Deaths	0
Maui County	
Total Cases	342
Released from Isolation†	193
Required Hospitalization	45
Deaths	8
HI Residents diagnosed outside of HI	25
County Pending	0

*includes presumptive and confirmed cases, data are preliminary and subject to change; note that CDC provides case counts according to states of residence.

†Isolation should be maintained until at least 3 days (72 hours) after resolution of fever and myalgia without the use of antipyretics OR at least 7 days have passed since symptom onset, whichever is longer.

7-Day Domestic by Island Moving Average Daily Passenger Volume

2020 Volume as Percentage of 2019 Volume
Through August 31, 2020



Source: HVCB analysis based on data from DBEDT
Note: Passenger volume figures include both visitors and residents.

Domestic by Island Month-to-Date and Year-to-Date Daily Passenger Volume

2020 Volume versus 2019 Volume
Through August 31, 2020

August 2020 (Month-to-Date through August 31)

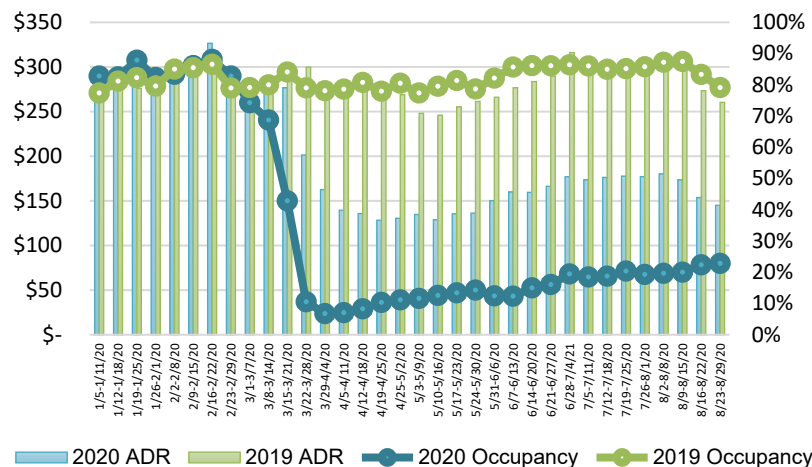
	2020	2019	Volume Change	Percent Change
Honolulu	48,507	421,229	-372,722	-88.5%
Maui County	4,200	205,479	-201,279	-98.0%
Island of Hawai'i	3,578	85,498	-81,920	-95.8%
Kaua'i	801	65,598	-64,797	-98.8%
Total	57,086	777,804	-720,718	-92.7%

2020 (Year-to-Date through August 31)

	2020	2019	Volume Change	Percent Change
Honolulu	1,125,876	3,143,864	-2,017,988	-64.2%
Maui County	453,482	1,535,824	-1,082,342	-70.5%
Island of Hawai'i	225,780	697,525	-471,745	-67.6%
Kaua'i	151,081	526,737	-375,656	-71.3%
Total	1,956,219	5,903,950	-3,947,732	-66.9%

Source: HVCB analysis based on data from DBEDT
Notes: Passenger volume figures include both visitors and residents. Total includes other international passengers. 2020 includes one additional day due to Leap Year (February 29th, 2020).

State of Hawai'i Hotel Performance by Week - 2020 vs 2019



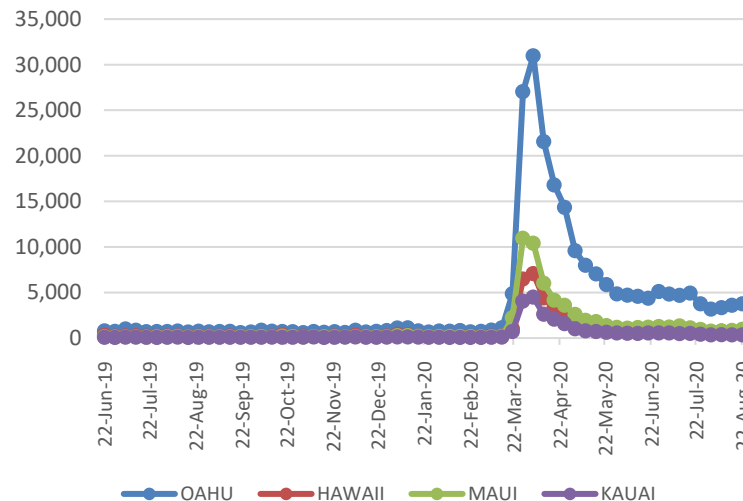
Source: STR, Inc. © Copyright 2020 Hawai'i Tourism Authority

Hawaii Hotel Performance Info:

For the week of August 23 – August 29, 2020

	Occupancy	ADR	RevPAR
State of Hawaii	22.8%	\$ 145.00	\$ 33.13
Oahu	26.6%	\$ 144.68	\$ 38.55
Maui County	16.3%	\$ 162.46	\$ 26.42
Kauai County	14.9%	\$ 151.83	\$ 22.59
Island of Hawaii	23.9%	\$ 122.57	\$ 29.29

2020 Initial Weekly Unemployment Claims by Island



Weekly Unemployment Initial Claims: August 22, 2020

State of Hawaii	5,785
C&C of Oahu	3,741
Hawaii County	646
Maui County	941
Kauai County	340
Agent (filed in Hawaii against another state)	127

News Highlights

September 2, 2020

KHON2: [Hundreds of callers request information on hotel quarantine rooms](#)

Honolulu Civil Beat: [The Cost Of Failure To Contain The Virus? Massive Layoffs](#)

Travel Pulse: [COVID-19 in September: Which US States Have Travel Restrictions?](#)

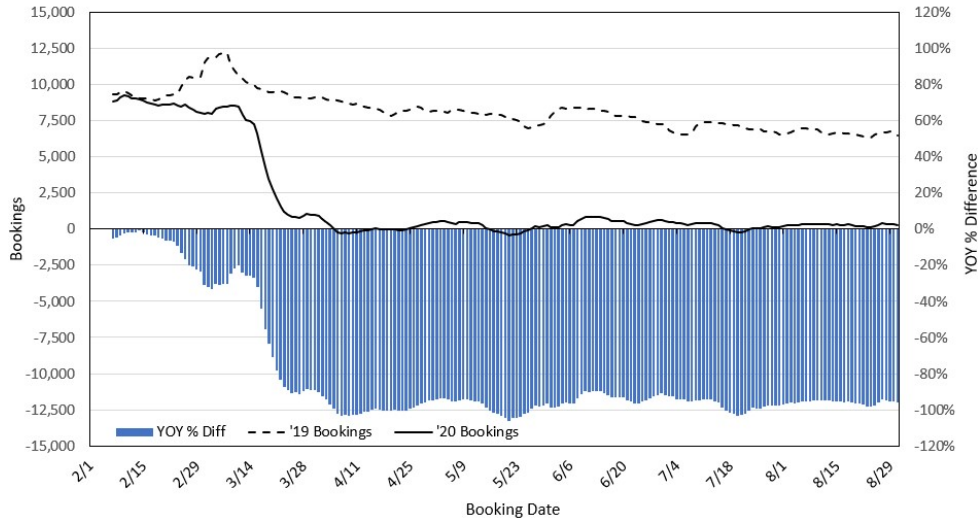
West Hawaii Today: [Contact tracing app squeaks through: Council Public Safety Committee narrowly passes nonbinding resolution](#)

The Garden Island: [Leadership Kauai shifts focus with help from grant](#)

Travel Pulse: [Traveler Confidence Levels Rebound Leading Up to Labor Day Weekend](#)

Travel Weekly: [Airport health accreditation aims to ease pandemic fears](#)

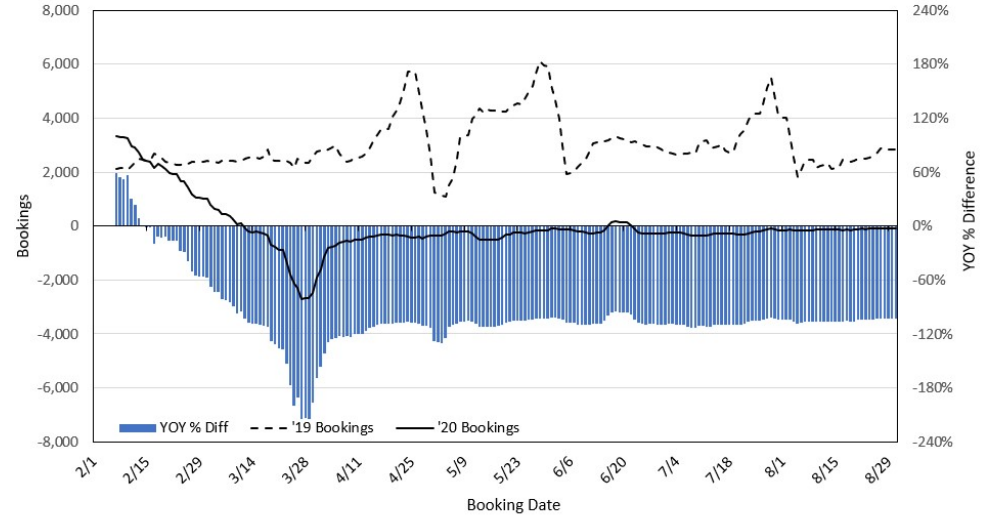
Travel Agency Bookings to Hawaii for Future Arrivals*
Based on a 7-day Moving Average, 2020 vs 2019
U.S.



*Future Arrivals refers to all arrivals that are 'future' relative to the referenced booking date.
 Source: Global Agency Pro

Update: Aug 31, 2020

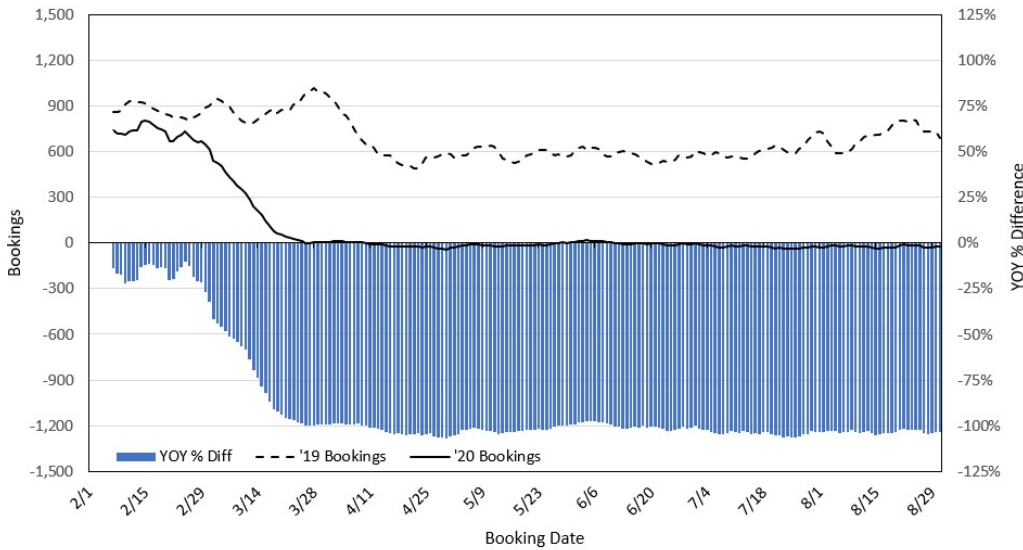
Travel Agency Bookings to Hawaii for Future Arrivals*
Based on a 7-day Moving Average, 2020 vs 2019
Japan



*Future Arrivals refers to all arrivals that are 'future' relative to the referenced booking date.
 Source: Global Agency Pro

Update: Aug 31, 2020

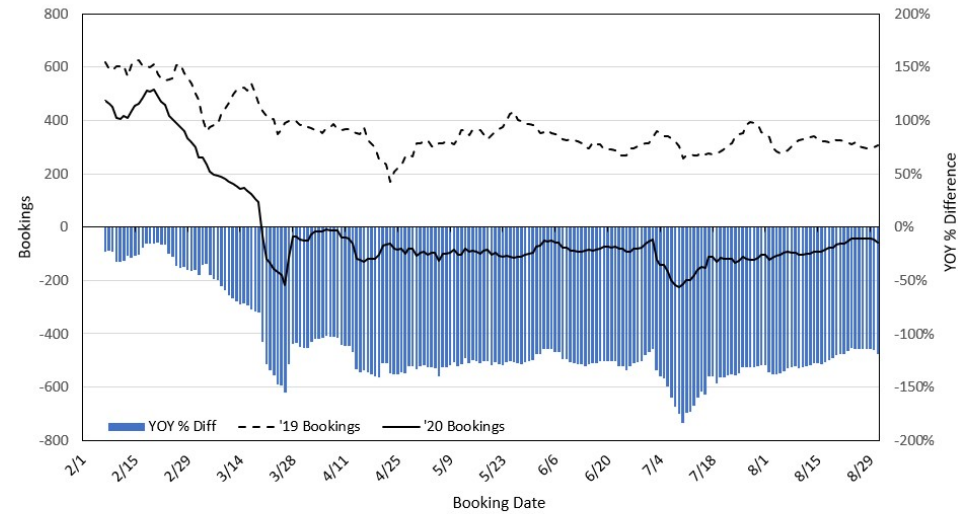
Travel Agency Bookings to Hawaii for Future Arrivals*
Based on a 7-day Moving Average, 2020 vs 2019
Canada



*Future Arrivals refers to all arrivals that are 'future' relative to the referenced booking date.
 Source: Global Agency Pro

Update: Aug 31, 2020

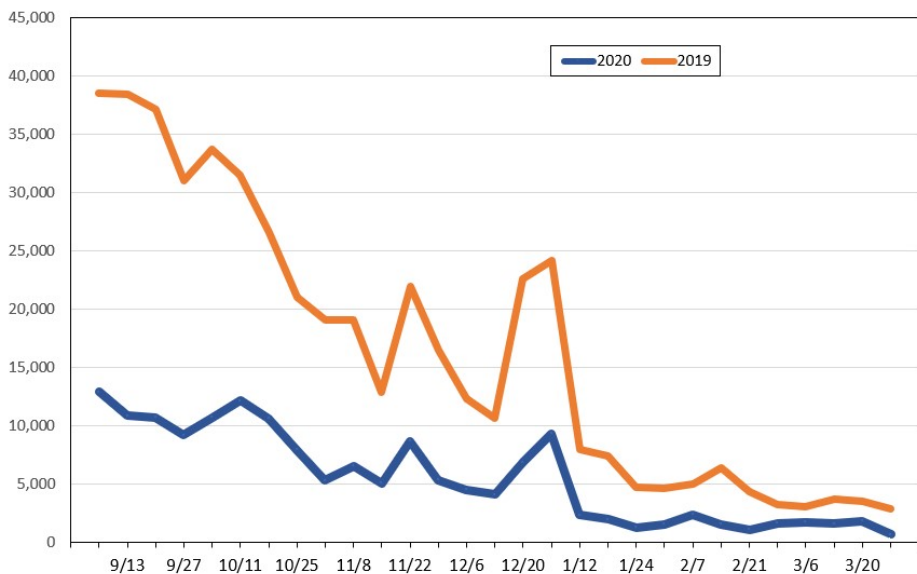
Travel Agency Bookings to Hawaii for Future Arrivals*
Based on a 7-day Moving Average, 2020 vs 2019
Australia



*Future Arrivals refers to all arrivals that are 'future' relative to the referenced booking date.
 Source: Global Agency Pro

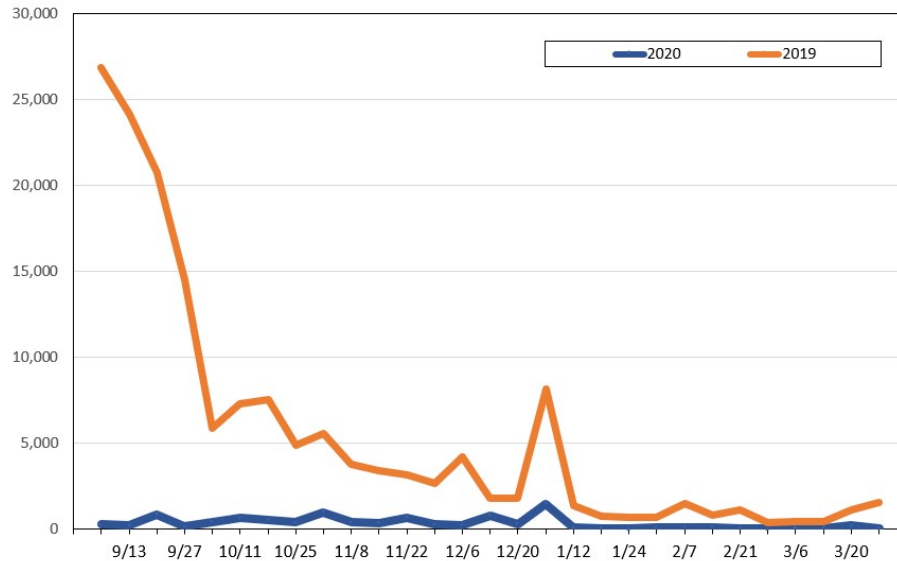
Update: Aug 31, 2020

Travel Agency Weekly Bookings for Future Travel to Hawai'i as of August 31, 2020
U.S.



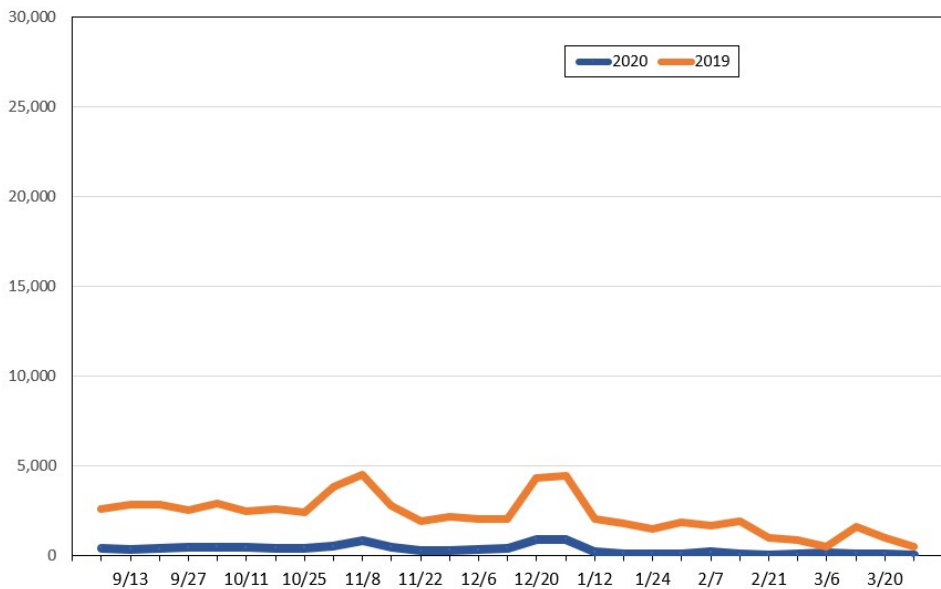
Source: Global Agency Pro, as of August 31, 2020

Travel Agency Weekly Bookings for Future Travel to Hawai'i as of August 31, 2020
Japan



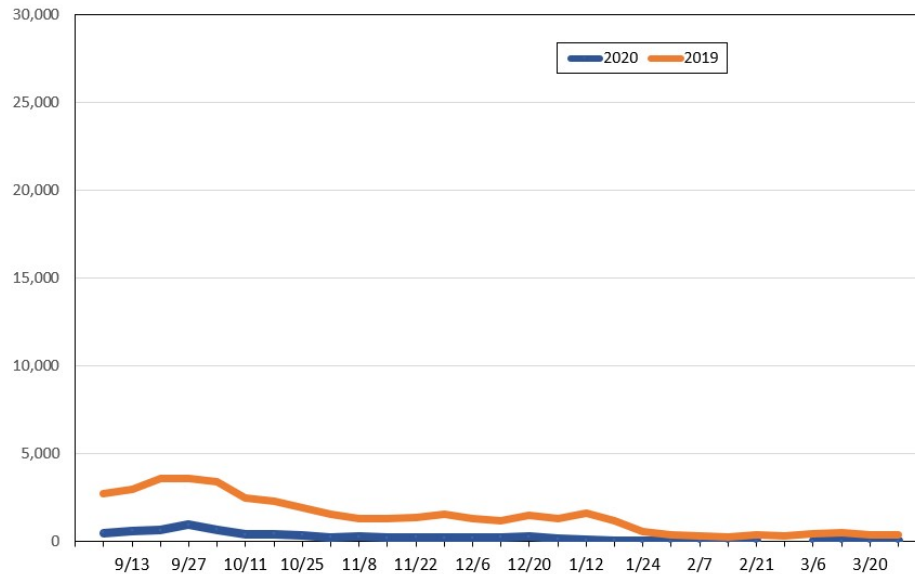
Source: Global Agency Pro, as of August 31, 2020

Travel Agency Weekly Bookings for Future Travel to Hawai'i as of August 31, 2020
Canada



Source: Global Agency Pro, as of August 31, 2020

Travel Agency Weekly Bookings for Future Travel to Hawai'i as of August 31, 2020
Australia



Source: Global Agency Pro, as of August 31, 2020