

HTA COVID-19 UPDATE

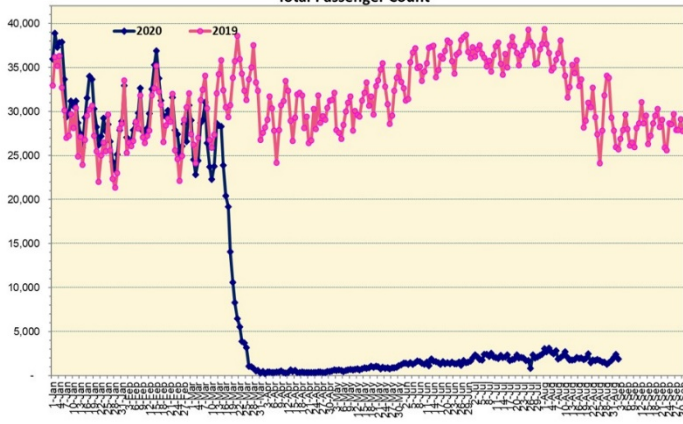
(Issued: 9/3/20 @ 4:30pm)

Novel Coronavirus in Hawaii

COVID-19 Positive* Cases

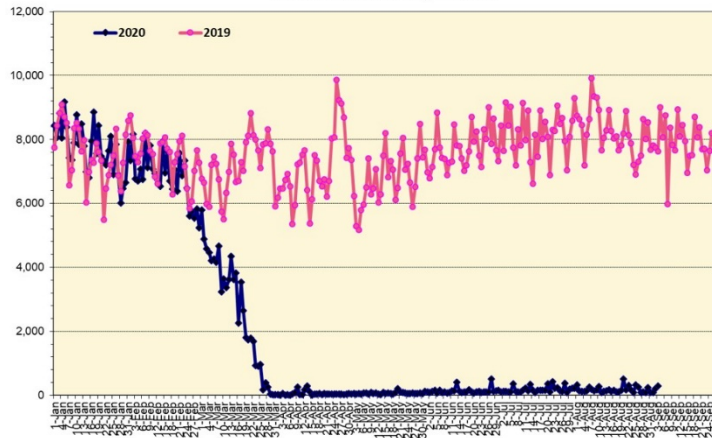
Cumulative totals as of 12:00 noon on September 3, 2020

Total Passenger Count



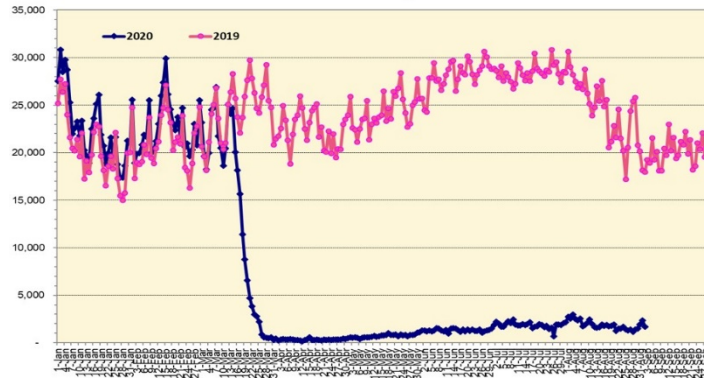
Note: Excludes flights from Canada

International Passenger Count



Note: Excludes flights from Canada

Domestic Passenger Count



Daily Passenger Count Table

09/02/2020	Domestic	International	Total
Oahu	1473	211	1684
Maui	115		115
Island of Hawaii	102		102
Kauai	0		0
State	1690	211	1901

Market Impact Update: <https://www.dropbox.com/09/03/20 HTA COVID19 Update>

09/02/20 Hawaii Passenger Trans-Pacific Arrivals by Air	Honolulu (HNL)	Kahului (OGG)	Kona (KOA)	Lihue (LIH)	Grand Total
Airline Crew	184	17	14	0	215
Essential Worker	83	22	14	3	122
Intended Resident	173	30	38	3	244
Military or Federal Government	128	0	0	0	128
Other	54	5	2	2	63
Other Business	70	14	12	6	102
Pleasure/Vacation	50	21	2	6	79
Returning Resident	439	97	58	15	609
To Attend School	29	1	1	0	31
Visiting Friends or Relatives	256	27	19	2	304
Transit	N/A	N/A	N/A	N/A	N/A
Grand Total	1,466	234	160	37	1,897

Source: Safe Travels program developed by the State of Hawaii Office of Enterprise Technology Services

Note: The data is preliminary and subject to change

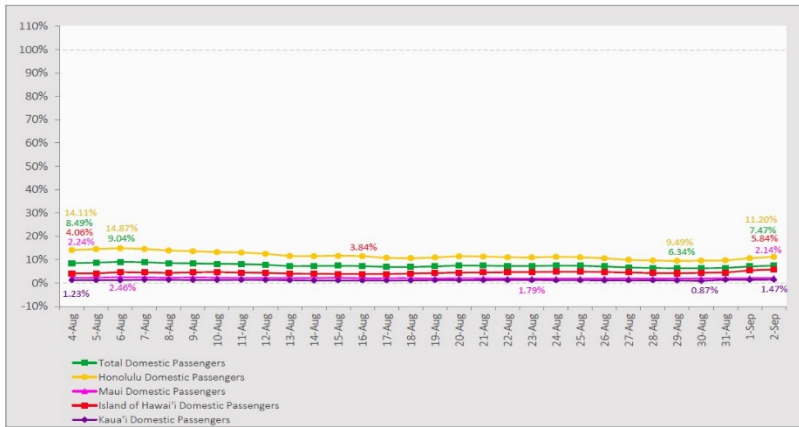
Statewide	Total
Total Cases	9202 (211 new)
Released from Isolation†	2778
Required Hospitalization	573
Deaths	79
BY COUNTY	Total
Hawaii County	
Total Cases	435
Released from Isolation†	205
Required Hospitalization	17
Deaths	3
Honolulu County	
Total Cases	8339
Released from Isolation†	2322
Required Hospitalization	508
Deaths	67
Kauai County	
Total Cases	57
Released from Isolation†	55
Required Hospitalization	1
Deaths	0
Maui County	
Total Cases	346
Released from Isolation†	196
Required Hospitalization	45
Deaths	8
HI Residents diagnosed outside of HI	25
County Pending	0

*includes presumptive and confirmed cases, data are preliminary and subject to change; note that CDC provides case counts according to states of residence.

†Isolation should be maintained until at least 3 days (72 hours) after resolution of fever and myalgia without the use of antipyretics OR at least 7 days have passed since symptom onset, whichever is longer.

7-Day Domestic by Island Moving Average Daily Passenger Volume

2020 Volume as Percentage of 2019 Volume
Through September 2, 2020



Source: HVCB analysis based on data from DBEDT
Note: Passenger volume figures include both visitors and residents.

Domestic by Island Month-to-Date and Year-to-Date Daily Passenger Volume

2020 Volume versus 2019 Volume
Through September 2, 2020

September 2020 (Month-to-Date through September 2)

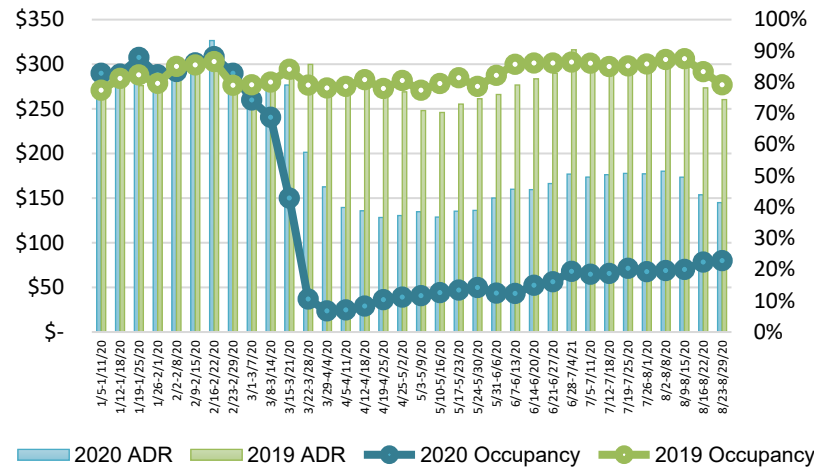
	2020	2019	Volume Change	Percent Change
Honolulu	3,459	23,267	-19,808	-85.1%
Maui County	215	10,653	-10,439	-98.0%
Island of Hawai'i	354	3,340	-2,986	-89.4%
Kaua'i	0	3,675	-3,675	-100.0%
Total	4,027	40,935	-36,908	-90.2%

2020 (Year-to-Date through September 2)

	2020	2019	Volume Change	Percent Change
Honolulu	1,129,694	3,167,131	-2,037,437	-64.3%
Maui County	453,791	1,546,477	-1,092,687	-70.7%
Island of Hawai'i	226,134	700,865	-474,731	-67.7%
Kaua'i	151,118	530,412	-379,294	-71.5%
Total	1,960,737	5,944,885	-3,984,149	-67.0%

Source: HVCB analysis based on data from DBEDT
Notes: Passenger volume figures include both visitors and residents. Total includes other international passengers. 2020 includes one additional day due to Leap Year (February 29th, 2020).

State of Hawai'i Hotel Performance by Week - 2020 vs 2019



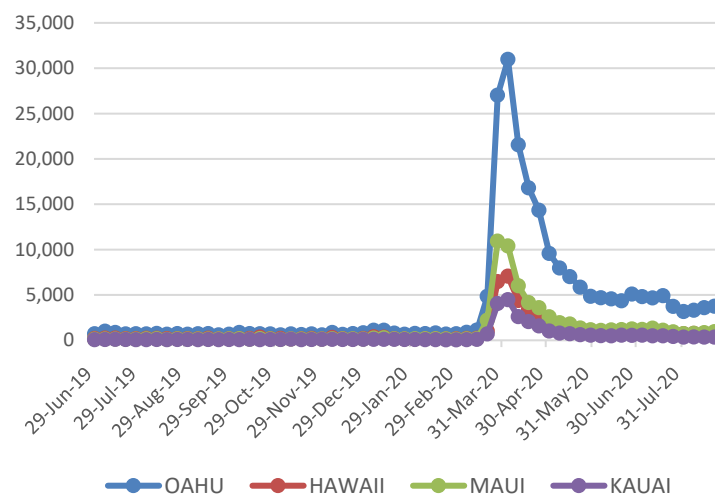
Source: STR, Inc. © Copyright 2020 Hawai'i Tourism Authority

Hawaii Hotel Performance Info:

For the week of August 23 – August 29, 2020

	Occupancy	ADR	RevPAR
State of Hawaii	22.8%	\$ 145.00	\$ 33.13
Oahu	26.6%	\$ 144.68	\$ 38.55
Maui County	16.3%	\$ 162.46	\$ 26.42
Kauai County	14.9%	\$ 151.83	\$ 22.59
Island of Hawaii	23.9%	\$ 122.57	\$ 29.29

2020 Initial Weekly Unemployment Claims by Island



Weekly Unemployment Initial Claims: August 29, 2020

State of Hawaii	6,782
C&C of Oahu	4,716
Hawaii County	655
Maui County	911
Kauai County	338
Agent (filed in Hawaii against another state)	162

News Highlights

September 3, 2020

Honolulu Star-Advertiser: [H-3 testing to proceed today despite federal objection](#)

Hawaii News Now: [Expert hired to fix overwhelmed contact tracing program at DOH asks for leave](#)

KHON2: [A new cluster in a Big Island fishing village raises concern while the death toll and case count continue to rise](#)

KITV: [CDC documents say states should prepare to distribute Covid-19 vaccines as soon as late October](#)

Hawaii Tribune-Herald: [Big Isle marks 8th consecutive day of new virus cases in double digits](#)

Honolulu Civil Beat: [Why We Should Set The Bar High On Testing Visitors](#)

Travelweek: [Let's talk about Hawaii: Possible flights, pre-testing and winter forecast](#)

National Review: [Hawaii Is Now Learning the Hard Lessons That Most Other States Learned Earlier](#)

Helpful Resources

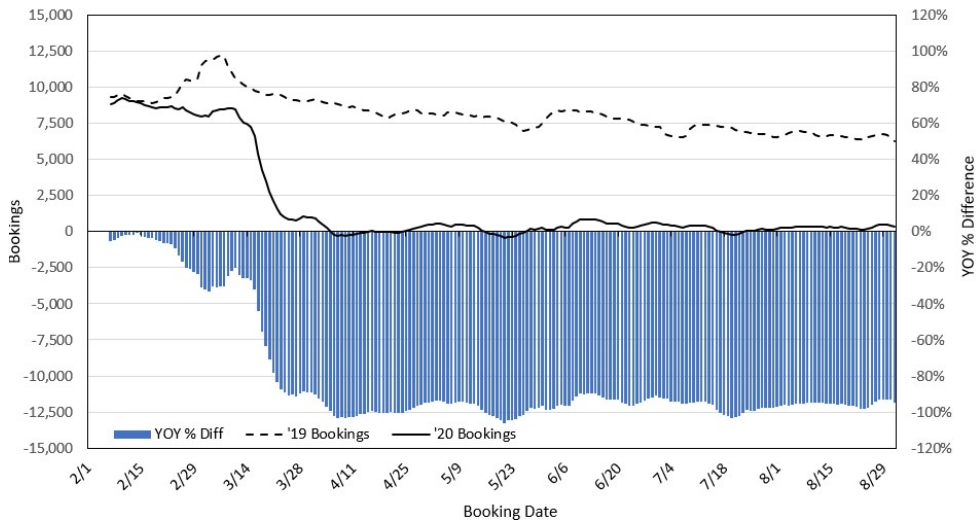
Department of Health
<https://hawaiiocovid19.com/>

Department of Health
<https://health.hawaii.gov/docd/advisories/novel-coronavirus-2019>

Dept. of Business, Economic Development & Tourism
<https://dbedt.hawaii.gov/economic/covid19/>

Department of Transportation
<https://hidot.hawaii.gov/coronavirus/>

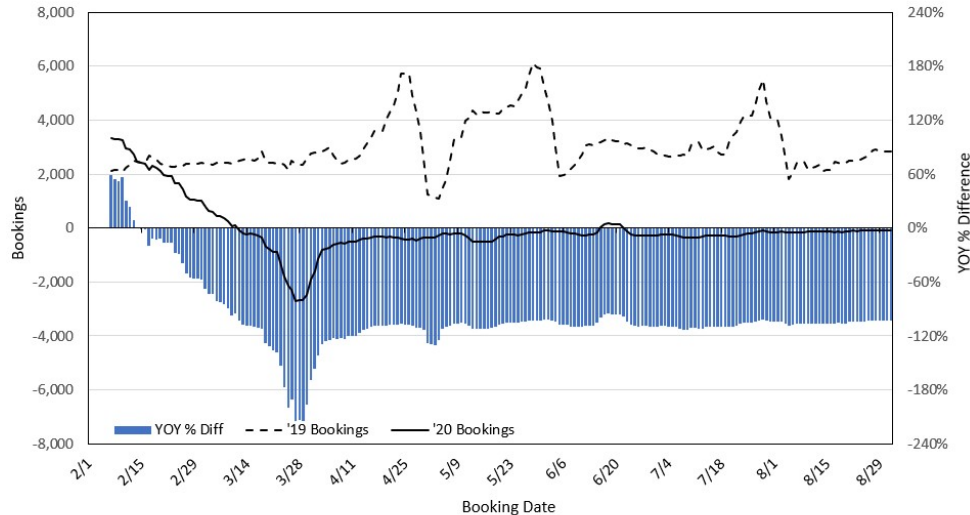
**Travel Agency Bookings to Hawaii for Future Arrivals*
Based on a 7-day Moving Average, 2020 vs 2019
U.S.**



*Future Arrivals refers to all arrivals that are 'future' relative to the referenced booking date.
Source: Global Agency Pro

Update: Sep 1, 2020

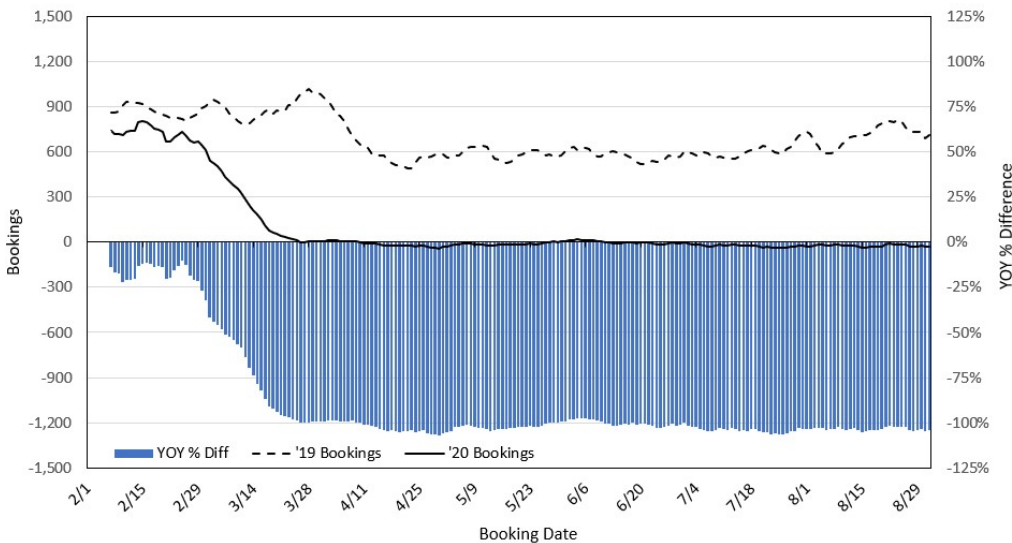
**Travel Agency Bookings to Hawaii for Future Arrivals*
Based on a 7-day Moving Average, 2020 vs 2019
Japan**



*Future Arrivals refers to all arrivals that are 'future' relative to the referenced booking date.
Source: Global Agency Pro

Update: Sep 1, 2020

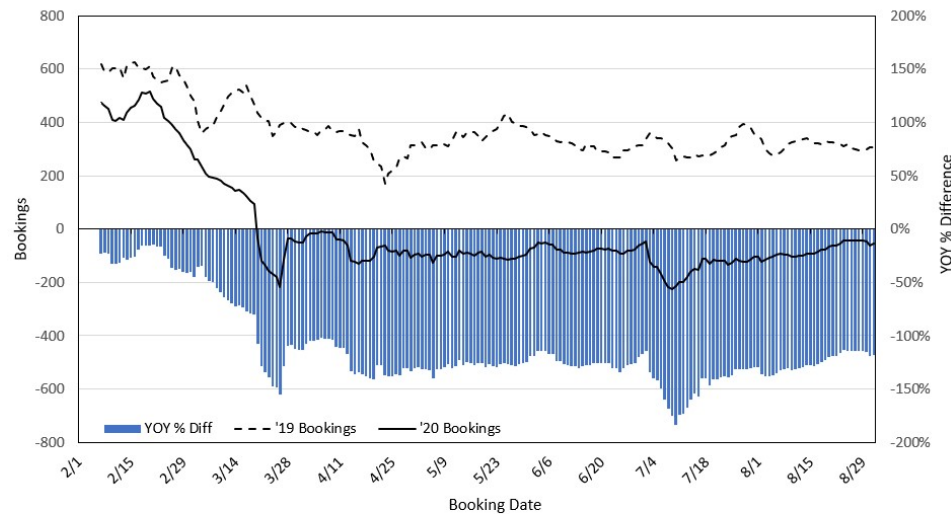
**Travel Agency Bookings to Hawaii for Future Arrivals*
Based on a 7-day Moving Average, 2020 vs 2019
Canada**



*Future Arrivals refers to all arrivals that are 'future' relative to the referenced booking date.
Source: Global Agency Pro

Update: Sep 1, 2020

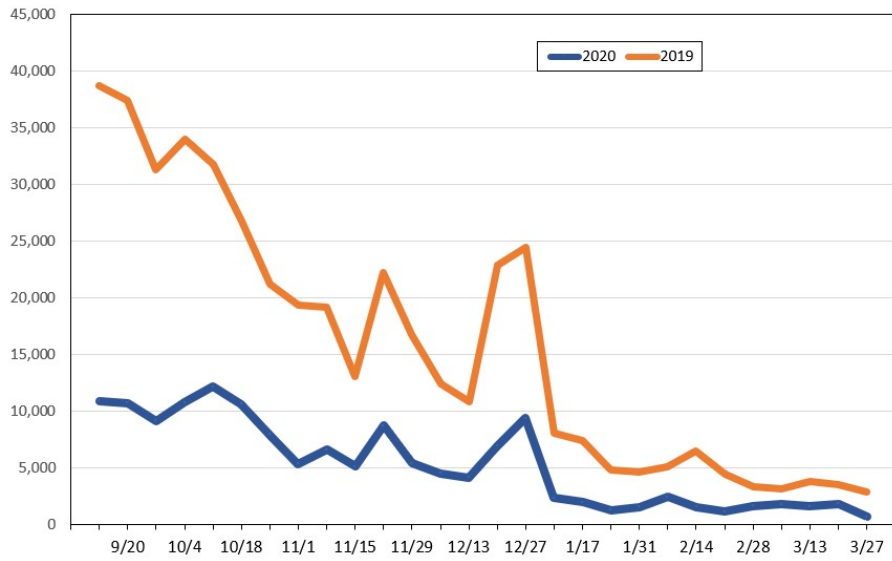
**Travel Agency Bookings to Hawaii for Future Arrivals*
Based on a 7-day Moving Average, 2020 vs 2019
Australia**



*Future Arrivals refers to all arrivals that are 'future' relative to the referenced booking date.
Source: Global Agency Pro

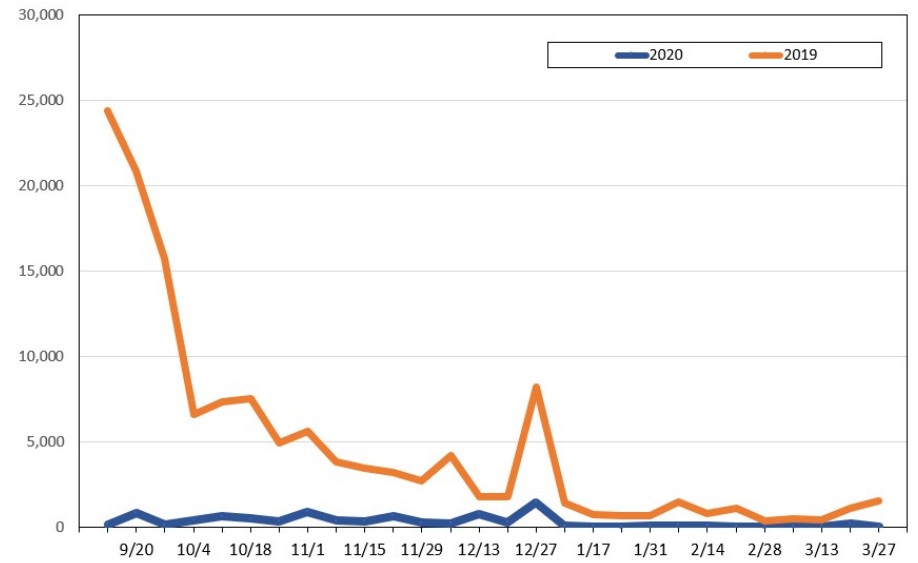
Update: Sep 1, 2020

Travel Agency Weekly Bookings for Future Travel to Hawai'i as of September 1, 2020
U.S.



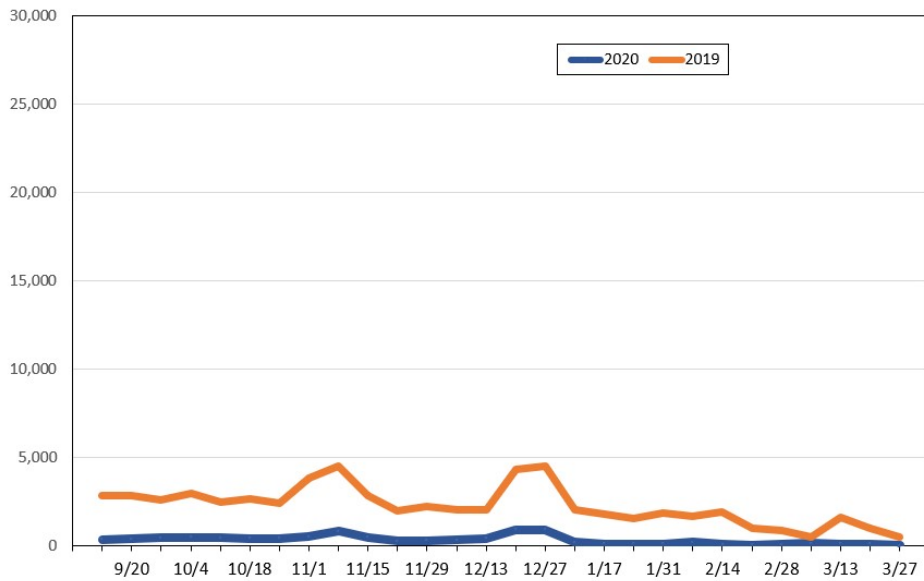
Source: Global Agency Pro, as of September 1, 2020

Travel Agency Weekly Bookings for Future Travel to Hawai'i as of September 1, 2020
Japan



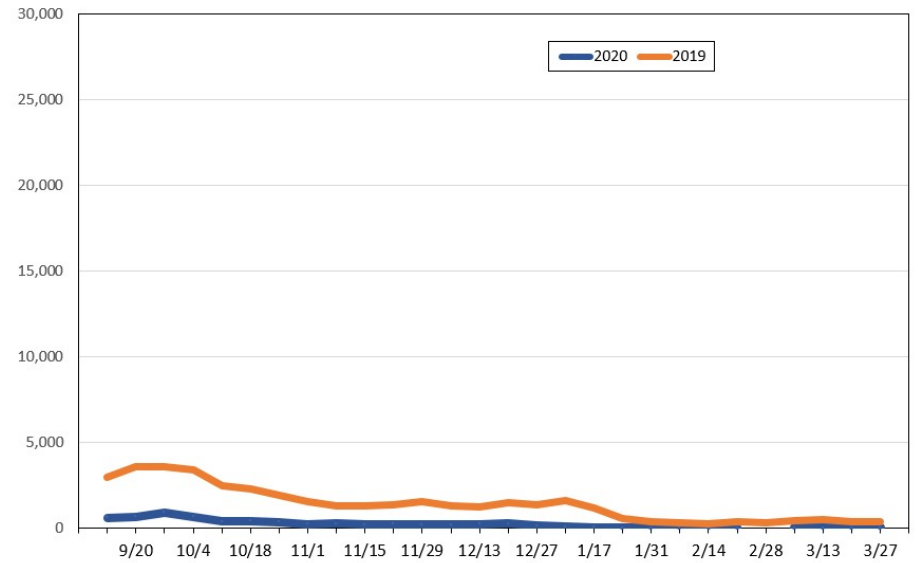
Source: Global Agency Pro, as of September 1, 2020

Travel Agency Weekly Bookings for Future Travel to Hawai'i as of September 1, 2020
Canada



Source: Global Agency Pro, as of September 1, 2020

Travel Agency Weekly Bookings for Future Travel to Hawai'i as of September 1, 2020
Australia



Source: Global Agency Pro, as of September 1, 2020