

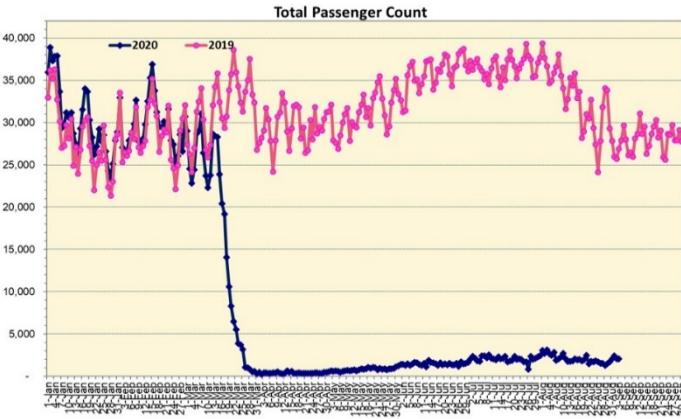
# HTA COVID-19 UPDATE

(Issued: 9/4/20 @ 4:00pm)

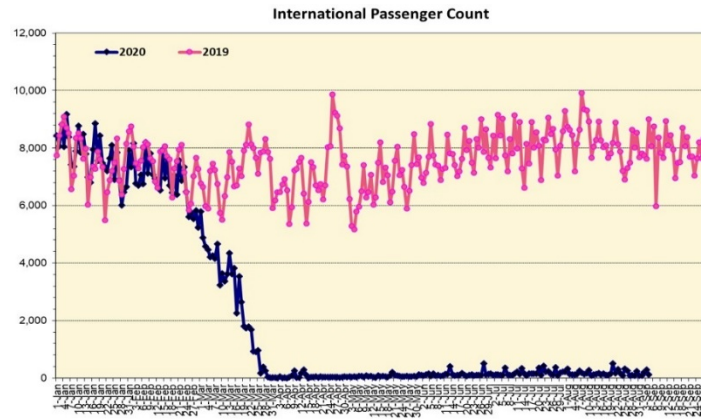
## Novel Coronavirus in Hawaii

COVID-19 Positive\* Cases

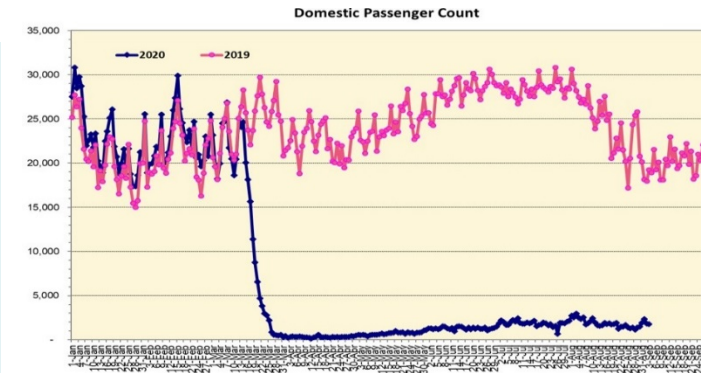
Cumulative totals as of 12:00 noon on September 4, 2020



Note: Excludes flights from Canada



Note: Excludes flights from Canada



### Daily Passenger Count Table

09/03/2020	Domestic	International	Total
Oahu	1393	297	1690
Maui	141		141
Island of Hawaii	140		140
Kauai	85		85
State	1759	297	2056

Market Impact Update: <https://www.dropbox.com/09/04/20 HTA COVID19 Update>

09/03/20 Hawaii Passenger Trans-Pacific Arrivals by Air	Honolulu (HNL)	Kahului (OGG)	Kona (KOA)	Lihue (LIH)	Grand Total
Airline Crew	242	25	19	0	286
Essential Worker	58	28	10	7	103
Intended Resident	159	33	38	27	257
Military or Federal Government	127	0	0	0	127
Other	74	16	9	1	100
Other Business	74	20	25	17	136
Pleasure/Vacation	57	8	20	6	91
Returning Resident	547	82	89	38	756
To Attend School	11	1	2	0	14
Visiting Friends or Relatives	282	30	37	11	360
Corporate Meeting	2	0	0	0	2
Sports Event	1	0	0	0	1
To Get Married	1	0	0	0	1
Transit	N/A	N/A	N/A	N/A	N/A
<b>Grand Total</b>	<b>1,635</b>	<b>243</b>	<b>249</b>	<b>107</b>	<b>2,234</b>

Source: Safe Travels program developed by the State of Hawaii Office of Enterprise Technology Services

Note: The data is preliminary and subject to change

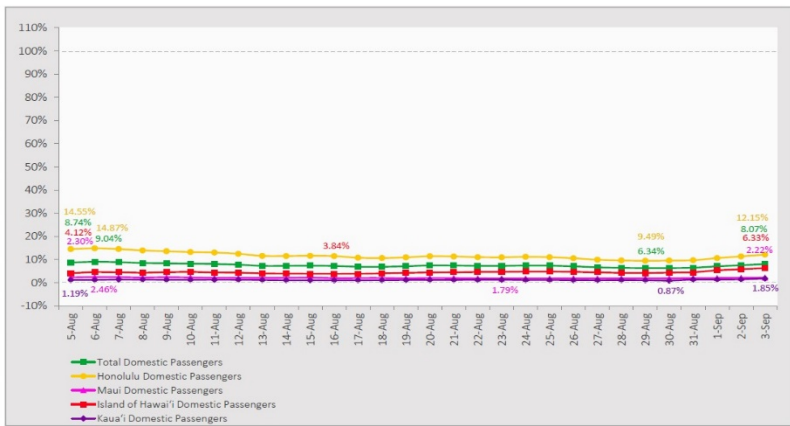
Statewide	Total
Total Cases	9473 (271 new)
Released from Isolation†	2855
Required Hospitalization	583
Deaths	81
BY COUNTY	Total
Hawaii County	
Total Cases	469
Released from Isolation†	208
Required Hospitalization	19
Deaths	3
Honolulu County	
Total Cases	8575
Released from Isolation†	2392
Required Hospitalization	516
Deaths	69
Kauai County	
Total Cases	57
Released from Isolation†	55
Required Hospitalization	1
Deaths	0
Maui County	
Total Cases	347
Released from Isolation†	200
Required Hospitalization	45
Deaths	8
HI Residents diagnosed outside of HI	25
County Pending	0

\*includes presumptive and confirmed cases, data are preliminary and subject to change; note that CDC provides case counts according to states of residence.

†Isolation should be maintained until at least 3 days (72 hours) after resolution of fever and myalgia without the use of antipyretics OR at least 7 days have passed since symptom onset, whichever is longer.

### 7-Day Domestic by Island Moving Average Daily Passenger Volume

2020 Volume as Percentage of 2019 Volume  
Through September 3, 2020



Source: HVCB analysis based on data from DBEDT  
Note: Passenger volume figures include both visitors and residents.

### Domestic by Island Month-to-Date and Year-to-Date Daily Passenger Volume

2020 Volume versus 2019 Volume  
Through September 3, 2020

September 2020 (Month-to-Date through September 3)

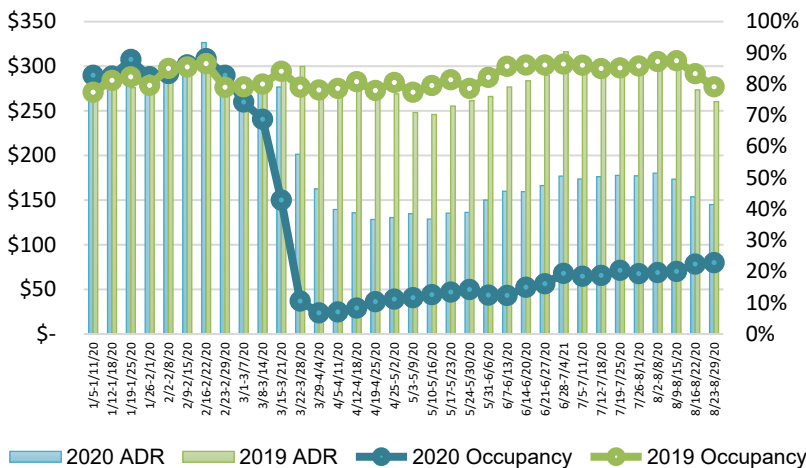
	2020	2019	Volume Change	Percent Change
Honolulu	5,008	33,812	-28,804	-85.2%
Maui County	356	15,610	-15,254	-97.7%
Island of Hawai'i	494	4,903	-4,409	-89.9%
Kaua'i	85	4,748	-4,663	-98.2%
<b>Total</b>	<b>5,943</b>	<b>59,073</b>	<b>-53,130</b>	<b>-89.9%</b>

2020 (Year-to-Date through September 3)

	2020	2019	Volume Change	Percent Change
Honolulu	1,131,244	3,177,676	-2,046,432	-64.4%
Maui County	453,932	1,551,434	-1,097,503	-70.7%
Island of Hawai'i	226,274	702,428	-476,154	-67.8%
Kaua'i	151,203	531,485	-380,282	-71.6%
<b>Total</b>	<b>1,962,653</b>	<b>5,963,023</b>	<b>-4,000,371</b>	<b>-67.1%</b>

Source: HVCB analysis based on data from DBEDT  
Note: Passenger volume figures include both visitors and residents. Total includes other international passengers. 2020 includes one additional day due to Leap Year (February 29th, 2020).

### State of Hawai'i Hotel Performance by Week - 2020 vs 2019



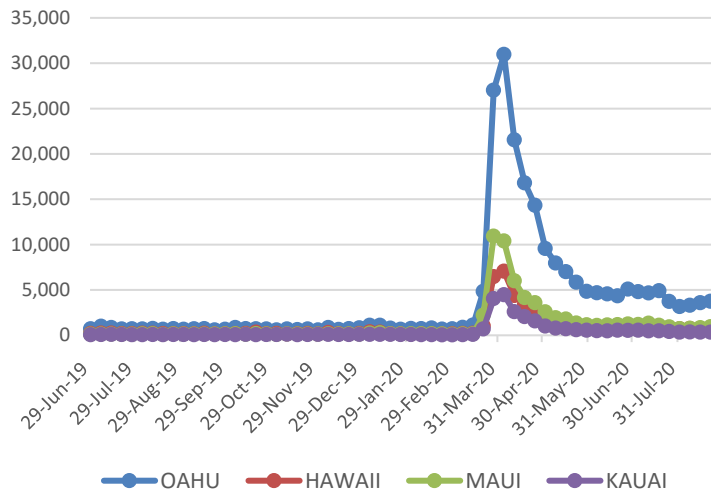
Source: STR, Inc. © Copyright 2020 Hawai'i Tourism Authority

### Hawaii Hotel Performance Info:

For the week of August 23 – August 29, 2020

	Occupancy	ADR	RevPAR
<b>State of Hawaii</b>	22.8%	\$ 145.00	\$ 33.13
<b>Oahu</b>	26.6%	\$ 144.68	\$ 38.55
<b>Maui County</b>	16.3%	\$ 162.46	\$ 26.42
<b>Kauai County</b>	14.9%	\$ 151.83	\$ 22.59
<b>Island of Hawaii</b>	23.9%	\$ 122.57	\$ 29.29

### 2020 Initial Weekly Unemployment Claims by Island



### Weekly Unemployment Initial Claims: August 29, 2020

<b>State of Hawaii</b>	6,782
<b>C&amp;C of Oahu</b>	4,716
<b>Hawaii County</b>	655
<b>Maui County</b>	911
<b>Kauai County</b>	338
<b>Agent (filed in Hawaii against another state)</b>	162

## News Highlights

September 4, 2020

**Hawaii News Now:** [When will tourism in Hawaii reopen? One expert predicts it might not be until 2021](#)

**KITV:** [Special agents checked in on about two dozen people under quarantine](#)

**Hawaii Tribune-Herald:** [Another chunk of county's CARES money now available](#)

**West Hawaii Today:** [New Safe Travels app launches](#)

**The Garden Island:** [State has paid out nearly \\$3 million in unemployment](#)

**Johnny Jet:** [Everything You Need to Know About Hawaii During COVID-19 and When Can We Visit Again?](#)

**The New York Times:** [VIRUS DIARY: In Hawaii, Pandemic, Pregnancy and Plumerias](#)

**Conde Nast Traveler:** [State Travel Restrictions During COVID-19: A Complete Guide](#)

#### Helpful Resources

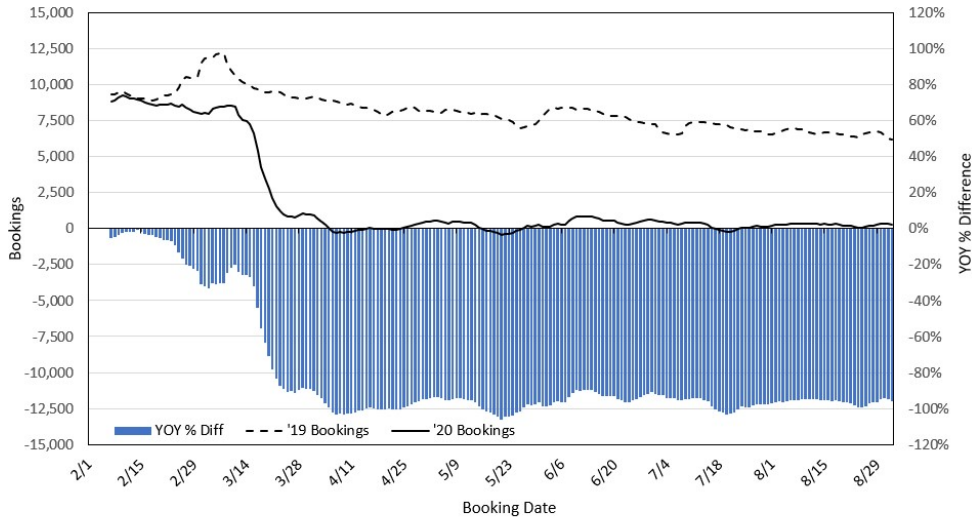
**Department of Health**  
<https://hawaiiocovid19.com/>

**Department of Health**  
<https://health.hawaii.gov/docd/advisories/novel-coronavirus-2019>

**Dept. of Business, Economic Development & Tourism**  
<https://dbedt.hawaii.gov/economic/covid19/>

**Department of Transportation**  
<https://hidot.hawaii.gov/coronavirus/>

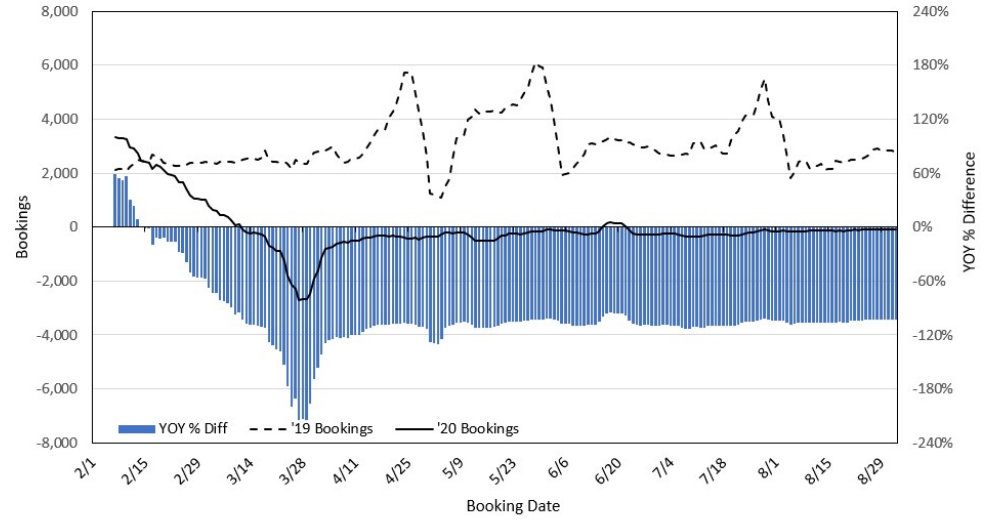
**Travel Agency Bookings to Hawaii for Future Arrivals\***  
**Based on a 7-day Moving Average, 2020 vs 2019**  
**U.S.**



\*Future Arrivals refers to all arrivals that are 'future' relative to the referenced booking date.  
 Source: Global Agency Pro

Update: Sep 2, 2020

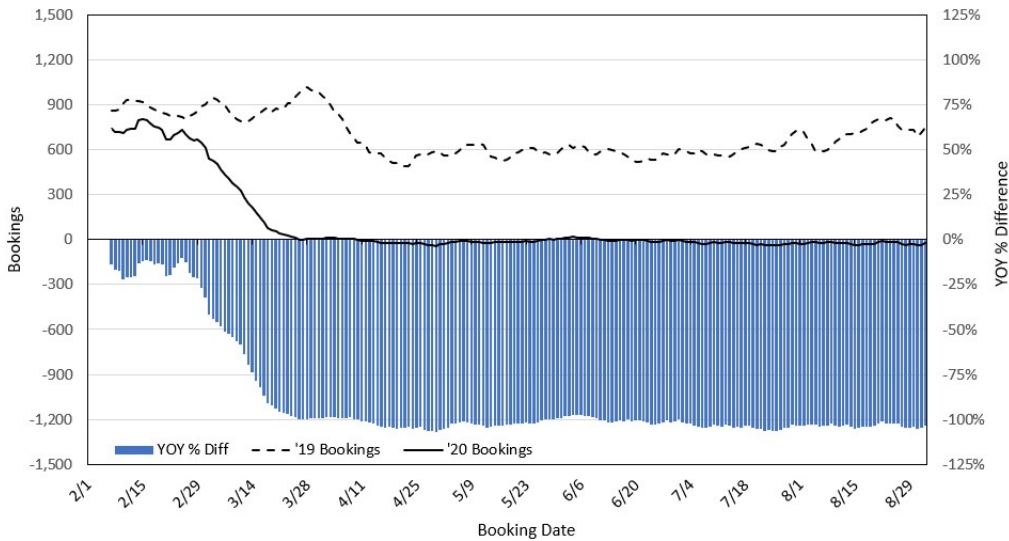
**Travel Agency Bookings to Hawaii for Future Arrivals\***  
**Based on a 7-day Moving Average, 2020 vs 2019**  
**Japan**



\*Future Arrivals refers to all arrivals that are 'future' relative to the referenced booking date.  
 Source: Global Agency Pro

Update: Sep 2, 2020

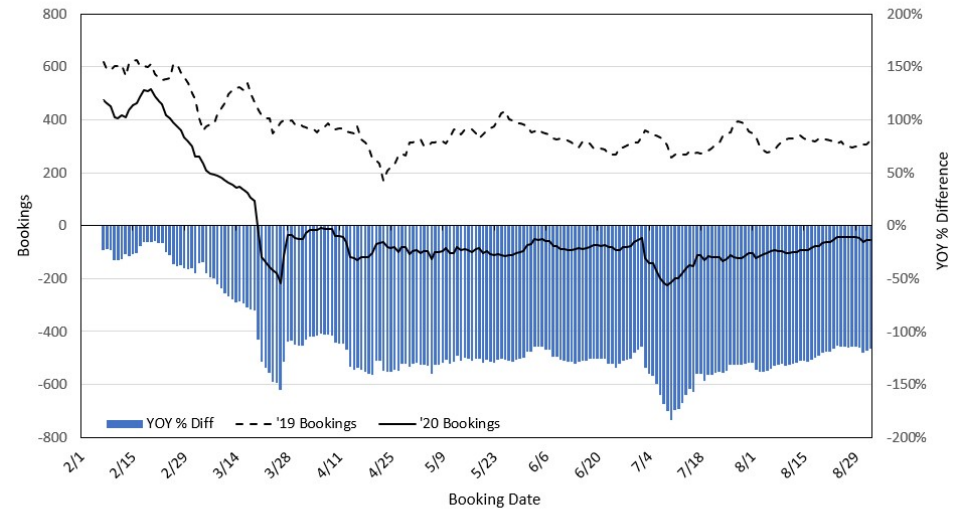
**Travel Agency Bookings to Hawaii for Future Arrivals\***  
**Based on a 7-day Moving Average, 2020 vs 2019**  
**Canada**



\*Future Arrivals refers to all arrivals that are 'future' relative to the referenced booking date.  
 Source: Global Agency Pro

Update: Sep 2, 2020

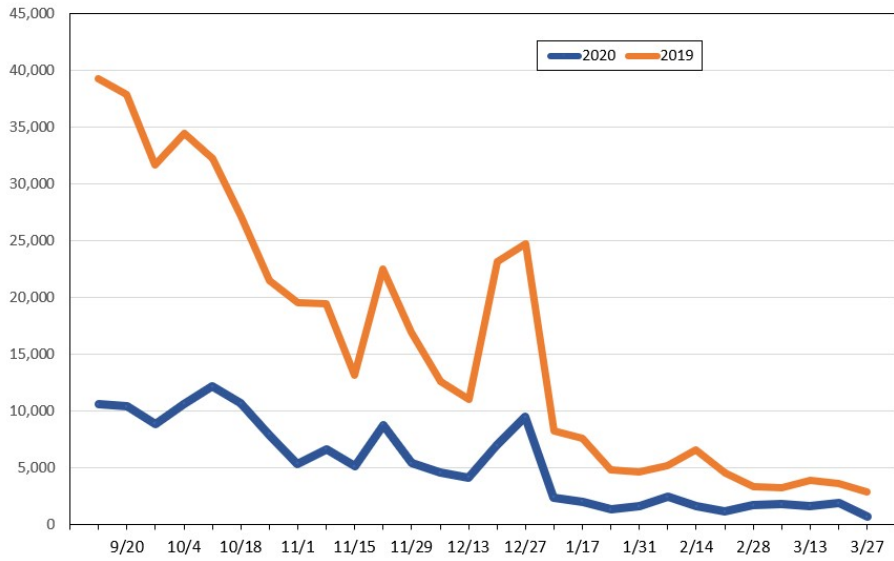
**Travel Agency Bookings to Hawaii for Future Arrivals\***  
**Based on a 7-day Moving Average, 2020 vs 2019**  
**Australia**



\*Future Arrivals refers to all arrivals that are 'future' relative to the referenced booking date.  
 Source: Global Agency Pro

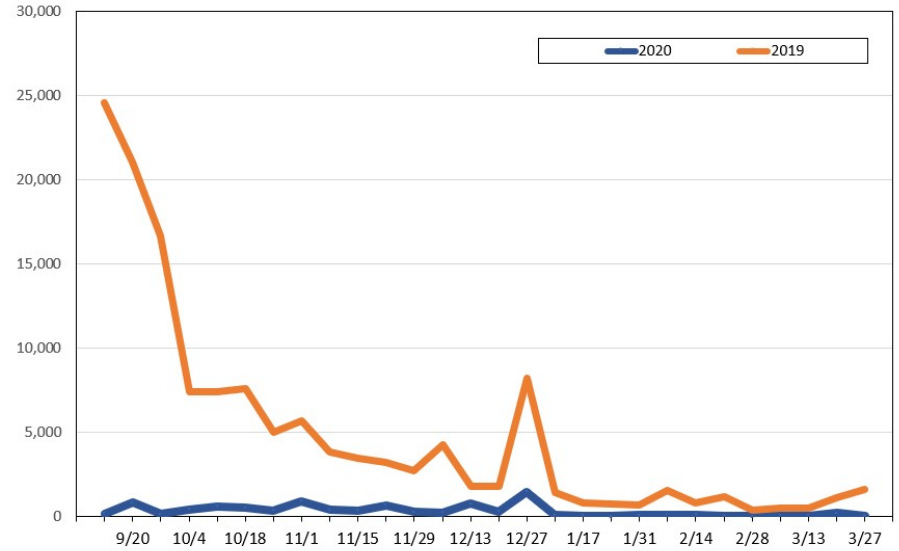
Update: Sep 2, 2020

**Travel Agency Weekly Bookings for Future Travel to Hawai'i as of September 2, 2020**  
U.S.



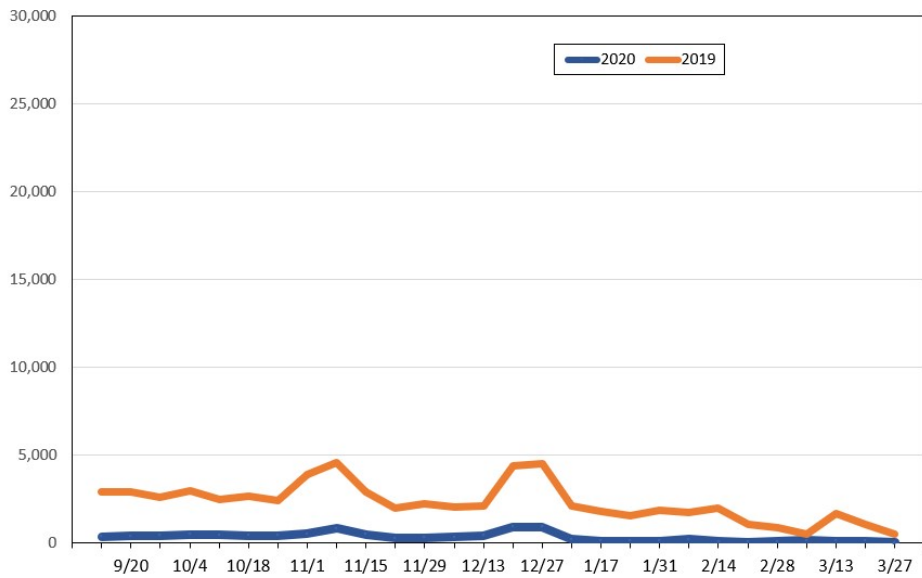
Source: Global Agency Pro, as of September 2, 2020

**Travel Agency Weekly Bookings for Future Travel to Hawai'i as of September 2, 2020**  
Japan



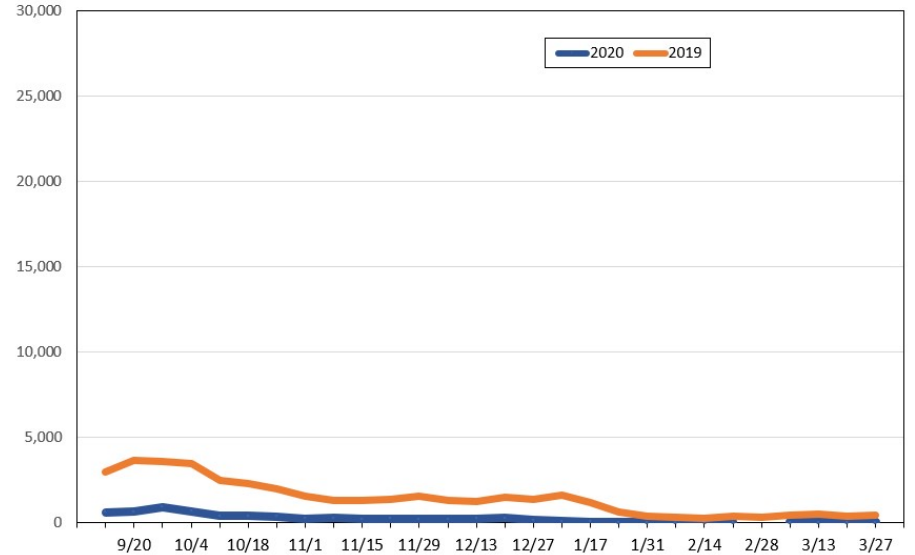
Source: Global Agency Pro, as of September 2, 2020

**Travel Agency Weekly Bookings for Future Travel to Hawai'i as of September 2, 2020**  
Canada



Source: Global Agency Pro, as of September 2, 2020

**Travel Agency Weekly Bookings for Future Travel to Hawai'i as of September 2, 2020**  
Australia



Source: Global Agency Pro, as of September 2, 2020