

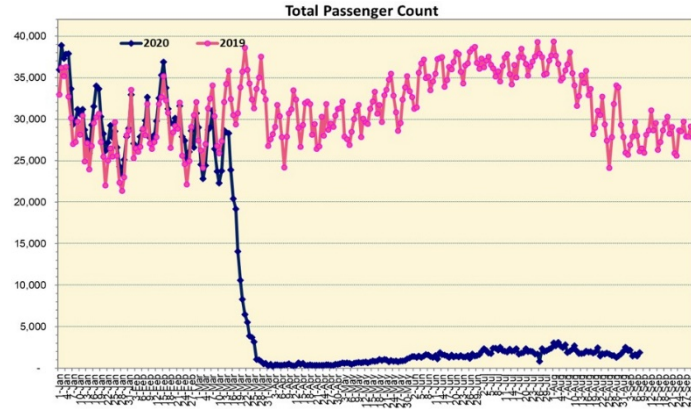
HTA COVID-19 UPDATE

(Issued: 9/8/20 @ 4:30pm)

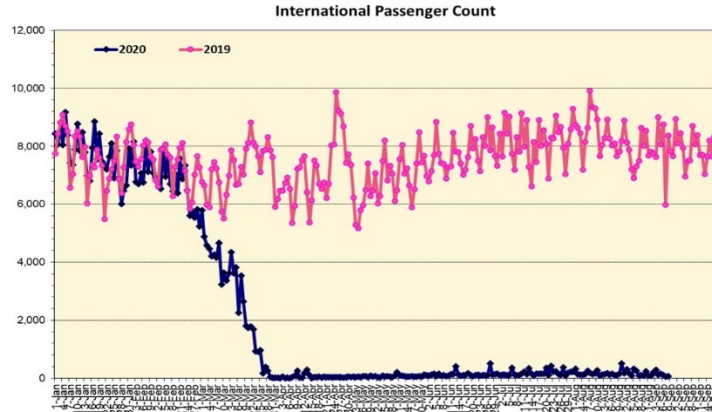
Novel Coronavirus in Hawaii

COVID-19 Positive* Cases

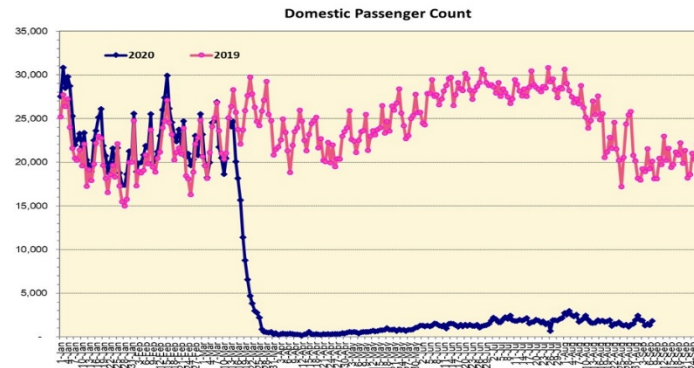
Cumulative totals as of 12:00 noon on September 8, 2020



Note: Excludes flights from Canada



Note: Excludes flights from Canada



Daily Passenger Count Table

09/07/2020	Domestic	International	Total
Oahu	1481	52	1533
Maui	158		158
Island of Hawaii	143		143
Kauai	44		44
State	1826	52	1878

Market Impact Update: <https://www.dropbox.com/09/08/20 HTA COVID19 Update>

09/07/20 Hawaii Passenger Trans-Pacific Arrivals by Air	Honolulu (HNL)	Kahului (OGG)	Kona (KOA)	Lihue (LIH)	Grand Total
Airline Crew	209	25	18	7	259
Corporate Meeting	1	1	0	0	2
Essential Worker	128	27	19	6	180
Intended Resident	120	20	30	11	181
Military or Federal Government	91	4	0	1	96
Other	45	6	13	3	67
Other Business	64	16	8	4	92
Pleasure/Vacation	58	13	10	2	83
Returning Resident	604	68	68	26	766
To Attend School	15	1	5	0	21
Visiting Friends or Relatives	236	40	37	16	329
(blank)	0	0	0	0	0
Transit	N/A	N/A	N/A	N/A	N/A
Grand Total	1,571	221	208	76	2,076

Source: Safe Travels program developed by the State of Hawaii Office of Enterprise Technology Services

Note: The data is preliminary and subject to change

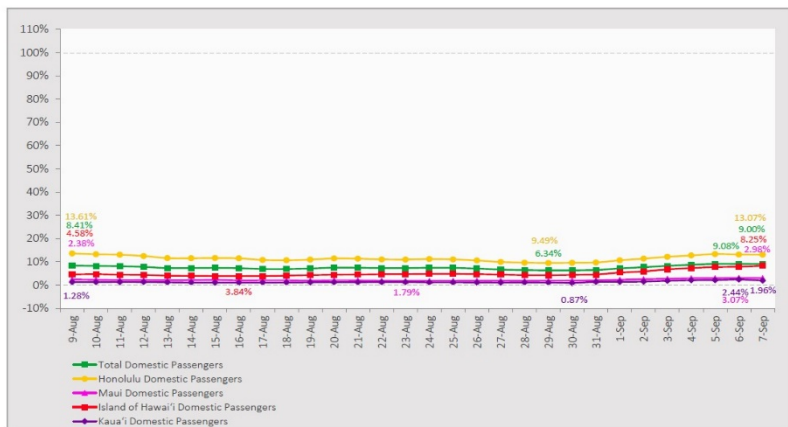
Statewide	Total
Total Cases	10025 (66 new)
Released from Isolation†	3063
Required Hospitalization	599
Deaths	88
BY COUNTY	Total
Hawaii County	
Total Cases	5233
Released from Isolation†	230
Required Hospitalization	21
Deaths	3
Honolulu County	
Total Cases	9058
Released from Isolation†	2569
Required Hospitalization	530
Deaths	75
Kauai County	
Total Cases	58
Released from Isolation†	56
Required Hospitalization	1
Deaths	0
Maui County	
Total Cases	360
Released from Isolation†	208
Required Hospitalization	45
Deaths	9
HI Residents diagnosed outside of HI	26
County Pending	0

*includes presumptive and confirmed cases, data are preliminary and subject to change; note that CDC provides case counts according to states of residence.

†Isolation should be maintained until at least 3 days (72 hours) after resolution of fever and myalgia without the use of antipyretics OR at least 7 days have passed since symptom onset, whichever is longer.

7-Day Domestic by Island Moving Average Daily Passenger Volume

2020 Volume as Percentage of 2019 Volume
Through September 7, 2020



Source: HVCB analysis based on data from DBEDT
Note: Passenger volume figures include both visitors and residents.

Domestic by Island Month-to-Date and Year-to-Date Daily Passenger Volume

2020 Volume versus 2019 Volume
Through September 7, 2020

September 2020 (Month-to-Date through September 7)

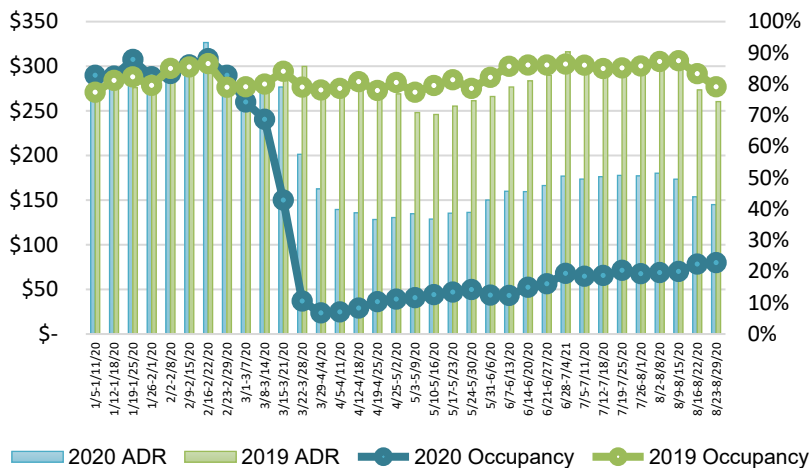
	2020	2019	Volume Change	Percent Change
Honolulu	9,813	75,445	-65,632	-87.0%
Maui County	1,068	36,738	-35,670	-97.1%
Island of Hawai'i	1,064	13,012	-11,948	-91.8%
Kaua'i	224	11,557	-11,333	-98.1%
Total	12,169	136,752	-124,583	-91.1%

2020 (Year-to-Date through September 7)

	2020	2019	Volume Change	Percent Change
Honolulu	1,136,049	3,219,309	-2,083,260	-64.7%
Maui County	454,644	1,572,562	-1,117,918	-71.1%
Island of Hawai'i	226,844	710,537	-483,693	-68.1%
Kaua'i	151,342	538,294	-386,952	-71.9%
Total	1,968,878	6,040,702	-4,071,824	-67.4%

Source: HVCB analysis based on data from DBEDT
Note: Passenger volume figures include both visitors and residents. Total includes other international passengers. 2020 includes one additional day due to Leap Year (February 29th, 2020).

State of Hawai'i Hotel Performance by Week - 2020 vs 2019



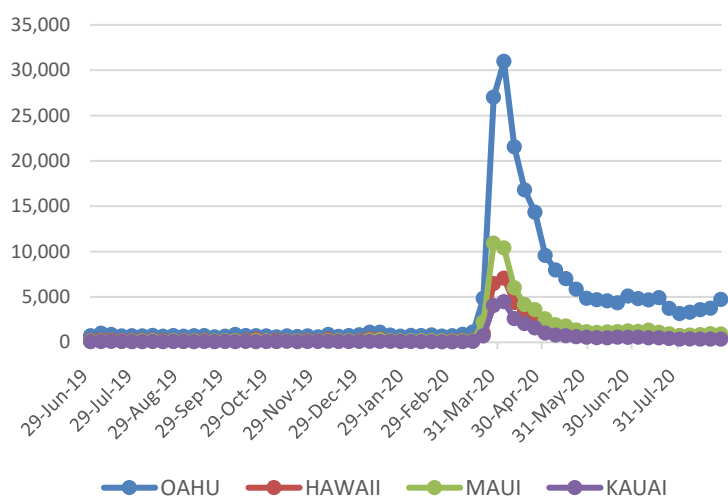
Source: STR, Inc. © Copyright 2020 Hawai'i Tourism Authority

Hawaii Hotel Performance Info:

For the week of August 23 – August 29, 2020

	Occupancy	ADR	RevPAR
State of Hawaii	22.8%	\$ 145.00	\$ 33.13
Oahu	26.6%	\$ 144.68	\$ 38.55
Maui County	16.3%	\$ 162.46	\$ 26.42
Kauai County	14.9%	\$ 151.83	\$ 22.59
Island of Hawaii	23.9%	\$ 122.57	\$ 29.29

2020 Initial Weekly Unemployment Claims by Island



Weekly Unemployment Initial Claims: August 29, 2020

State of Hawaii	6,782
C&C of Oahu	4,716
Hawaii County	655
Maui County	911
Kauai County	338
Agent (filed in Hawaii against another state)	162

News Highlights

September 8, 2020

Hawaii News Now: [Mayor extends stay-at-home order, but reopens parks and beaches for solo exercise](#)

Honolulu Star Advertiser: [Hotel quarantine to cost hundreds of thousands per month in CARES Act funds](#)

Honolulu Star Advertiser: [Lost faith in Hawaii's October tourism reopening triggers mass layoffs, traveler cancellations](#)

Hawaii News Now: [There are surf museums in California and Australia. One lawmaker asks: Why now Hawaii?](#)

West Hawaii Today: [Struggling to survive](#)

Hawaii Tribune Herald: [Kim stresses compliance; pamphlets being distributed to beachgoers](#)

Hawaii Public Radio: [Lack Of Visitors Offers Opportunity To Explore Human Impact On Marine Ecosystems](#)

Business Insider: [Unemployment diary: I'm 34-year-old bartender, teaching assistant, and retail work in Hawaii who's been out of work since April](#)

Helpful Resources

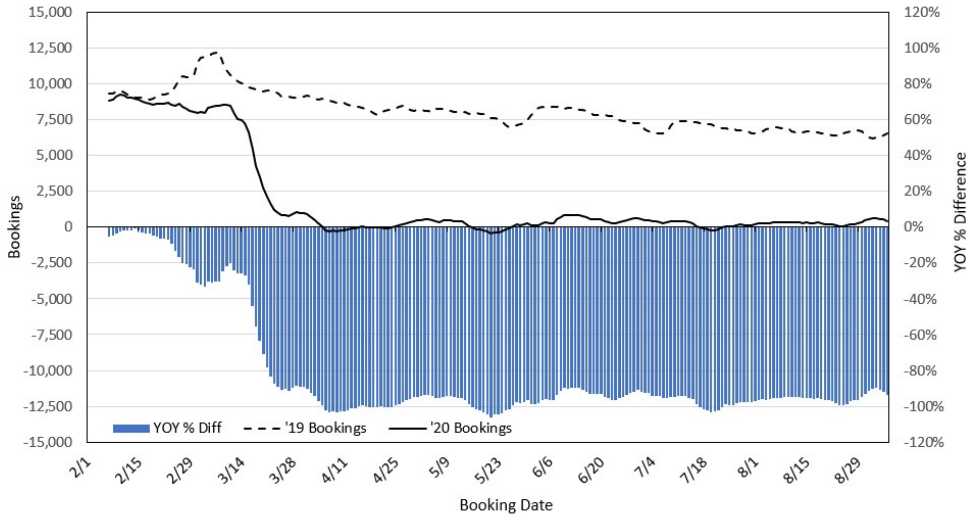
Department of Health
<https://hawaiiocovid19.com/>

Department of Health
<https://health.hawaii.gov/docd/advisories/novel-coronavirus-2019>

Dept. of Business, Economic Development & Tourism
<https://dbedt.hawaii.gov/economic/covid19/>

Department of Transportation
<https://hidot.hawaii.gov/coronavirus/>

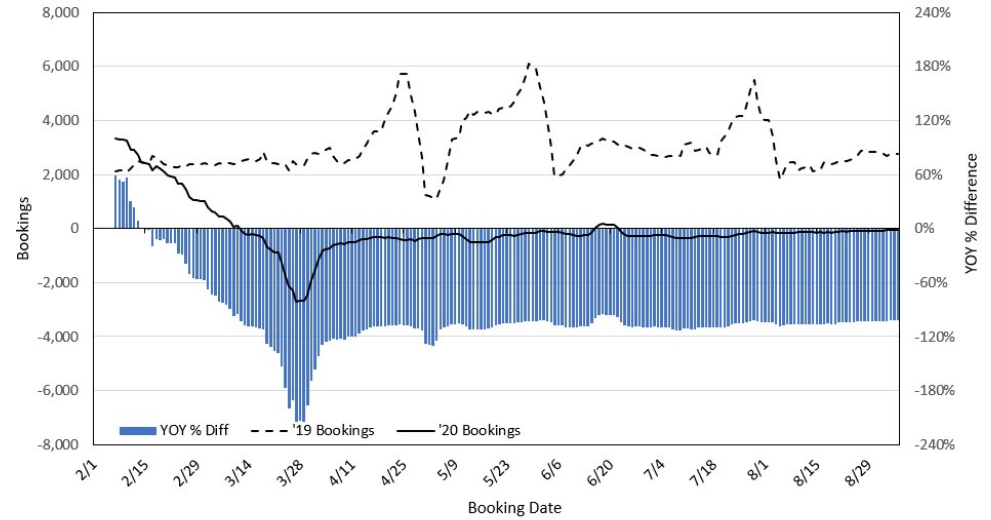
Travel Agency Bookings to Hawaii for Future Arrivals*
Based on a 7-day Moving Average, 2020 vs 2019
U.S.



*Future Arrivals refers to all arrivals that are 'future' relative to the referenced booking date.
 Source: Global Agency Pro

Update: Sep 6, 2020

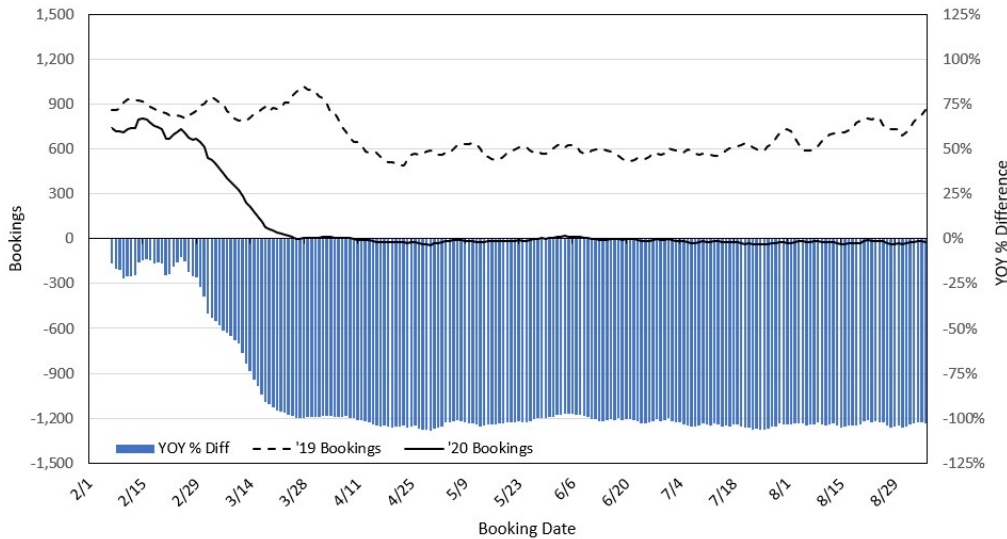
Travel Agency Bookings to Hawaii for Future Arrivals*
Based on a 7-day Moving Average, 2020 vs 2019
Japan



*Future Arrivals refers to all arrivals that are 'future' relative to the referenced booking date.
 Source: Global Agency Pro

Update: Sep 6, 2020

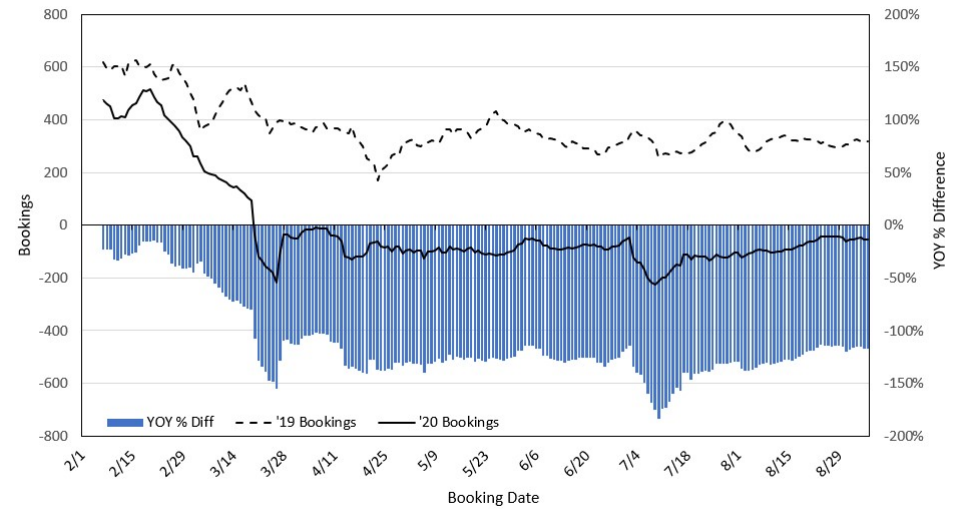
Travel Agency Bookings to Hawaii for Future Arrivals*
Based on a 7-day Moving Average, 2020 vs 2019
Canada



*Future Arrivals refers to all arrivals that are 'future' relative to the referenced booking date.
 Source: Global Agency Pro

Update: Sep 6, 2020

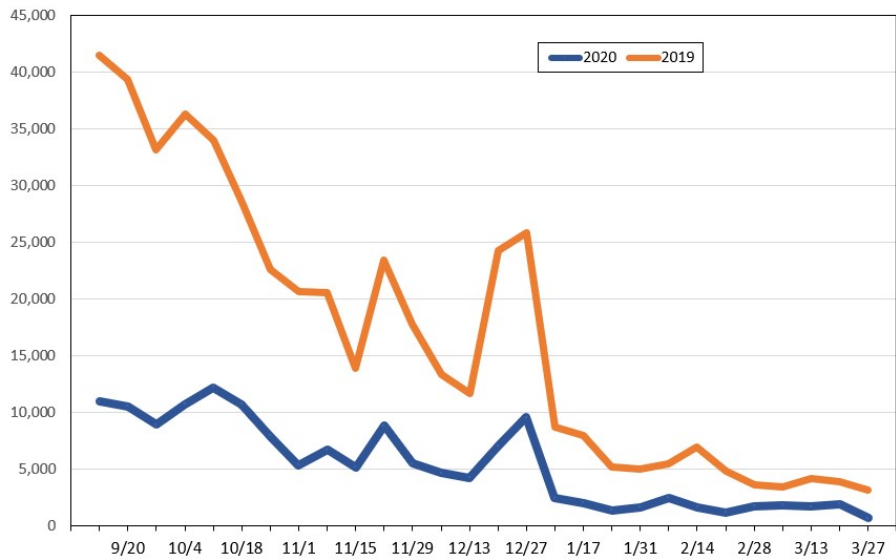
Travel Agency Bookings to Hawaii for Future Arrivals*
Based on a 7-day Moving Average, 2020 vs 2019
Australia



*Future Arrivals refers to all arrivals that are 'future' relative to the referenced booking date.
 Source: Global Agency Pro

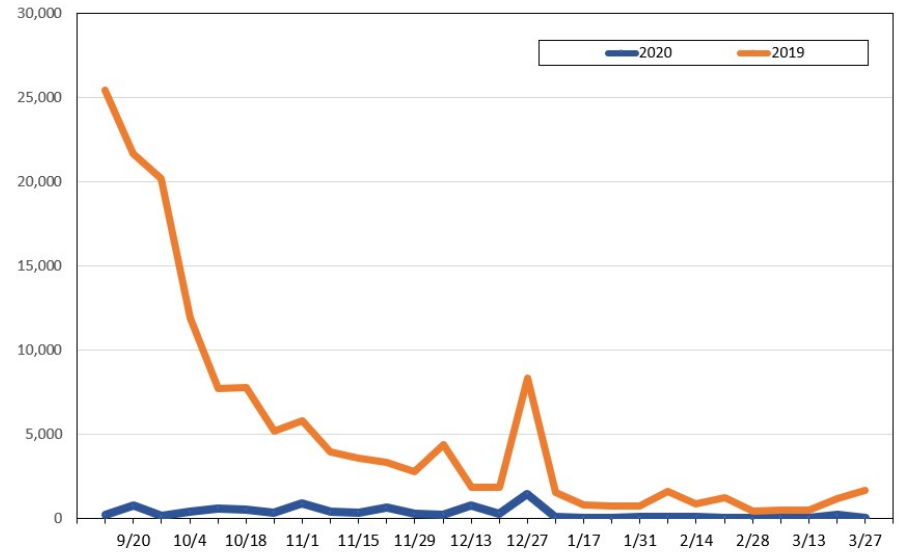
Update: Sep 6, 2020

Travel Agency Weekly Bookings for Future Travel to Hawai'i as of September 6, 2020
U.S.



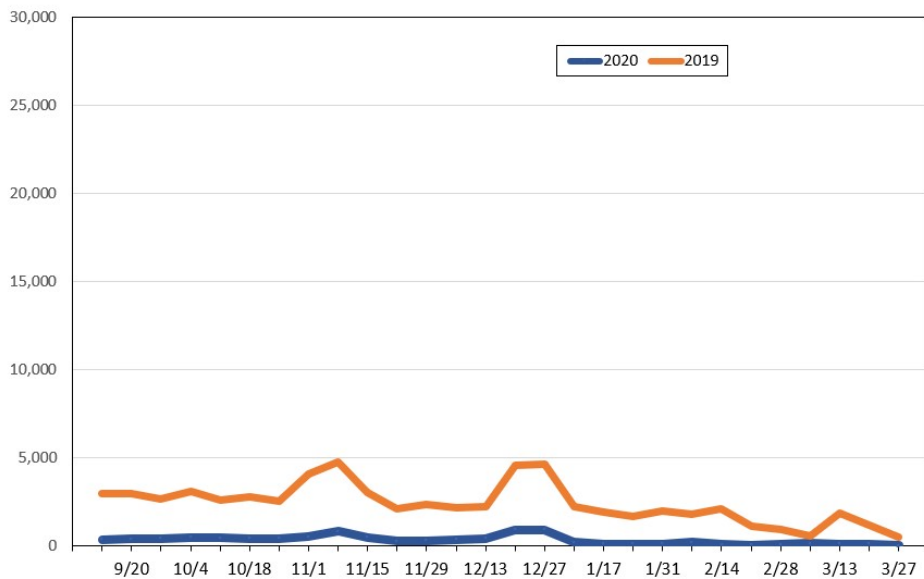
Source: Global Agency Pro, as of September 6, 2020

Travel Agency Weekly Bookings for Future Travel to Hawai'i as of September 6, 2020
Japan



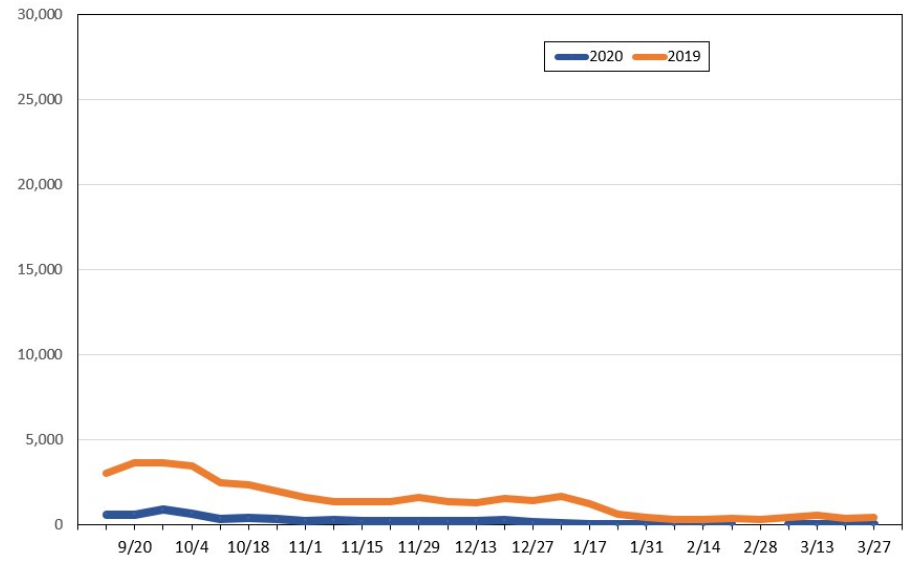
Source: Global Agency Pro, as of September 6, 2020

Travel Agency Weekly Bookings for Future Travel to Hawai'i as of September 6, 2020
Canada



Source: Global Agency Pro, as of September 6, 2020

Travel Agency Weekly Bookings for Future Travel to Hawai'i as of September 6, 2020
Australia



Source: Global Agency Pro, as of September 6, 2020