

# HTA COVID-19 UPDATE

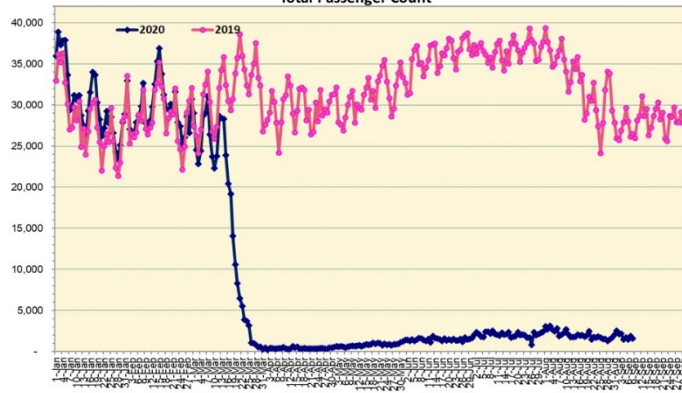
(Issued: 9/9/20 @ 4:00pm)

## Novel Coronavirus in Hawaii

COVID-19 Positive\* Cases

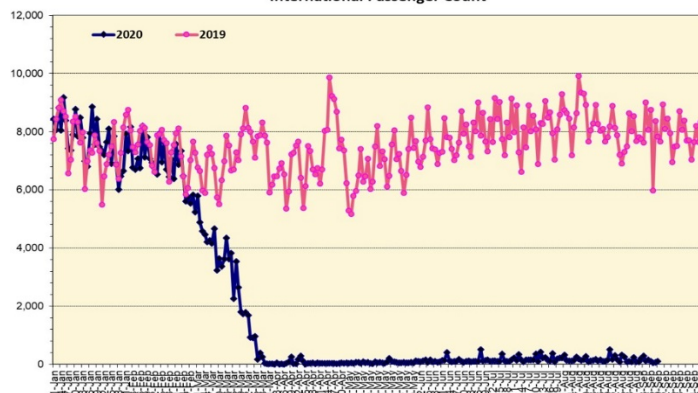
Cumulative totals as of 12:00 noon on September 9, 2020

Total Passenger Count



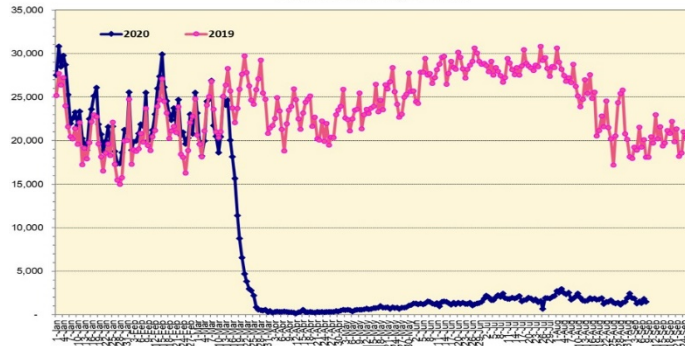
Note: Excludes flights from Canada

International Passenger Count



Note: Excludes flights from Canada

Domestic Passenger Count



### Daily Passenger Count Table

09/08/2020	Domestic	International	Total
Oahu	1229	74	1303
Maui	113		113
Island of Hawaii	146		146
Kauai	0		0
State	1488	74	1562

Market Impact Update: <https://www.dropbox.com/09/09/20 HTA COVID19 Update>

09/08/20 Hawaii Passenger Trans-Pacific Arrivals by Air	Honolulu (HNL)	Kahului (OGG)	Kona (KOA)	Lihue (LIH)	Grand Total
Airline Crew	211	16	10	2	239
Essential Worker	136	36	26	2	200
Honeymoon	1	0	0	0	1
Intended Resident	110	17	25	2	154
Military or Federal Government	130	0	0	0	130
Other	58	5	1	0	64
Other Business	72	30	18	0	120
Pleasure/Vacation	36	7	12	2	57
Returning Resident	477	68	44	12	601
To Attend School	8	0	0	0	8
Visiting Friends or Relatives	177	29	20	9	235
(blank)	0	0	0	0	0
Transit	N/A	N/A	N/A	N/A	N/A
<b>Grand Total</b>	<b>1,416</b>	<b>208</b>	<b>156</b>	<b>29</b>	<b>1,809</b>

Source: Safe Travels program developed by the State of Hawaii Office of Enterprise Technology Services

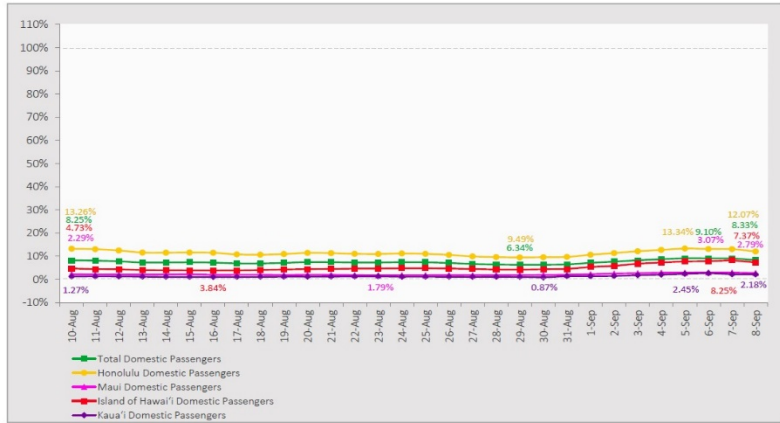
Note: The data is preliminary and subject to change

Statewide	Total
Total Cases	10123 (100 new)
Released from Isolation†	3120
Required Hospitalization	604
Deaths	91
BY COUNTY	Total
Hawaii County	
Total Cases	533
Released from Isolation†	237
Required Hospitalization	21
Deaths	3
Honolulu County	
Total Cases	9146
Released from Isolation†	2613
Required Hospitalization	533
Deaths	78
Kauai County	
Total Cases	58
Released from Isolation†	57
Required Hospitalization	1
Deaths	0
Maui County	
Total Cases	360
Released from Isolation†	213
Required Hospitalization	47
Deaths	9
HI Residents diagnosed outside of HI	26
County Pending	0

\*includes presumptive and confirmed cases, data are preliminary and subject to change; note that CDC provides case counts according to states of residence.

†Isolation should be maintained until at least 3 days (72 hours) after resolution of fever and myalgia without the use of antipyretics OR at least 7 days have passed since symptom onset, whichever is longer.

**7-Day Domestic by Island Moving Average Daily Passenger Volume**  
2020 Volume as Percentage of 2019 Volume  
Through September 8, 2020



Source: HVCB analysis based on data from DBEDT  
Note: Passenger volume figures include both visitors and residents.

**Domestic by Island Month-to-Date and Year-to-Date Daily Passenger Volume**  
2020 Volume versus 2019 Volume  
Through September 8, 2020

September 2020 (Month-to-Date through September 8)

	2020	2019	Volume Change	Percent Change
Honolulu	11,042	86,722	-75,680	-87.3%
Maui County	1,181	41,597	-40,416	-97.2%
Island of Hawai'i	1,210	14,488	-13,279	-91.7%
Kaua'i	256	13,170	-12,914	-98.1%
<b>Total</b>	<b>13,688</b>	<b>155,977</b>	<b>-142,289</b>	<b>-91.2%</b>

2020 (Year-to-Date through September 8)

	2020	2019	Volume Change	Percent Change
Honolulu	1,137,278	3,230,586	-2,093,308	-64.8%
Maui County	454,757	1,577,421	-1,122,665	-71.2%
Island of Hawai'i	226,990	712,013	-485,024	-68.1%
Kaua'i	151,374	539,907	-388,533	-72.0%
<b>Total</b>	<b>1,970,398</b>	<b>6,059,927</b>	<b>-4,089,530</b>	<b>-67.5%</b>

Source: HVCB analysis based on data from DBEDT  
Note: Passenger volume figures include both visitors and residents. Total includes other international passengers. 2020 includes one additional day due to Leap Year (February 29th, 2020).

**News Highlights**

September 9, 2020

**Honolulu Star Advertiser:**  
[Honolulu Mayor Kirk Caldwell extends stay-at-home, work-from-home order](#)

**Honolulu Star Advertiser:**  
[Letters: Reopening tourism in pandemic is reckless; Gov. Ige's indecisiveness shows need to step aside; Use automated feature to boost contact tracing](#)

**Hawaii News Now:** [In-flight emergency exposes alarming problem with key alert systems at Honolulu's airport](#)

**KHON2:** [Struggling to pay rent? State launches new program for families impacted by COVID-19](#)

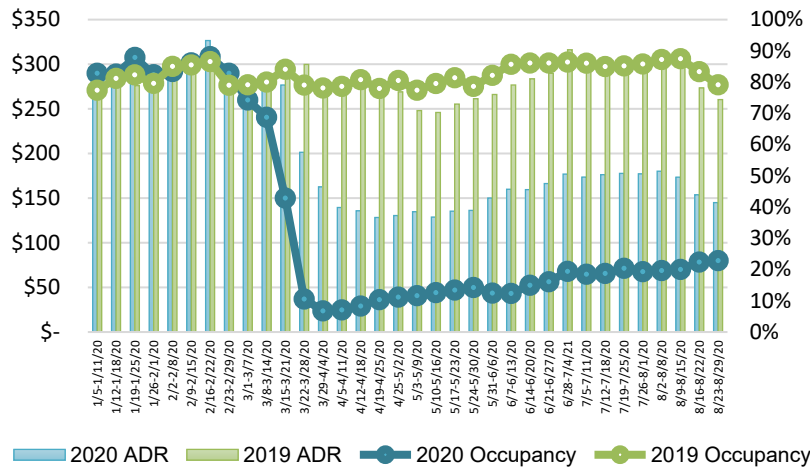
**Honolulu Civil Beat:** [Kalihi Has The Worst COVID-19 Outbreak In Hawaii. Here's How The Community Is Responding](#)

**The Maui News:** [Lawmakers urge Ige to initiate outer island pretesting program](#)

**Pacific Business News:** [ANA to offer two Hawaii-Japan roundtrip flights in October](#)

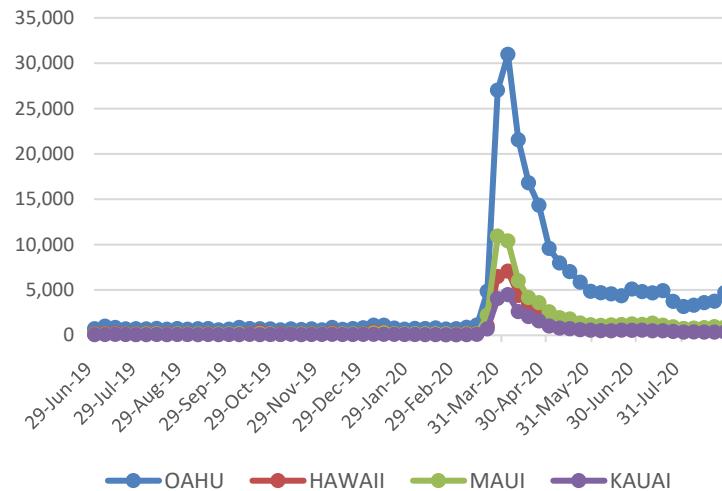
**Forbes:** [Hawaii Extends Stay-At-Home Order Another Two Weeks, October Tourism Reopening Highly Unlikely](#)

**State of Hawai'i Hotel Performance by Week - 2020 vs 2019**



Source: STR, Inc. © Copyright 2020 Hawai'i Tourism Authority

**2020 Initial Weekly Unemployment Claims by Island**



**Weekly Unemployment Initial Claims: August 29, 2020**

State of Hawaii	6,782
C&C of Oahu	4,716
Hawaii County	655
Maui County	911
Kauai County	338
Agent (filed in Hawaii against another state)	162

**Hawaii Hotel Performance Info:**

For the week of August 23 – August 29, 2020

	Occupancy	ADR	RevPAR
State of Hawaii	22.8%	\$ 145.00	\$ 33.13
Oahu	26.6%	\$ 144.68	\$ 38.55
Maui County	16.3%	\$ 162.46	\$ 26.42
Kauai County	14.9%	\$ 151.83	\$ 22.59
Island of Hawaii	23.9%	\$ 122.57	\$ 29.29

**Helpful Resources**

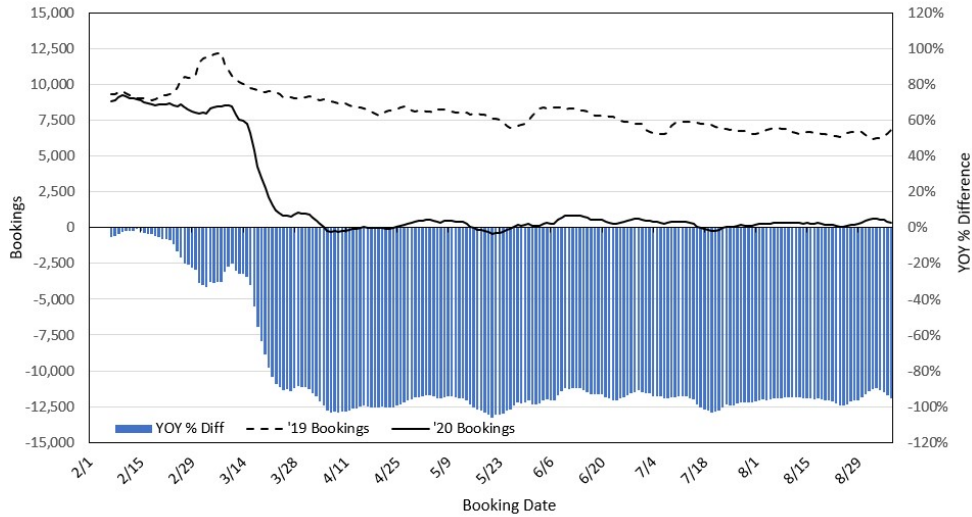
Department of Health  
<https://hawaiicovid19.com/>

Department of Health  
<https://health.hawaii.gov/docd/advisories/novel-coronavirus-2019>

Dept. of Business, Economic Development & Tourism  
<https://dbedt.hawaii.gov/economic/covid19/>

Department of Transportation  
<https://hidot.hawaii.gov/coronavirus/>

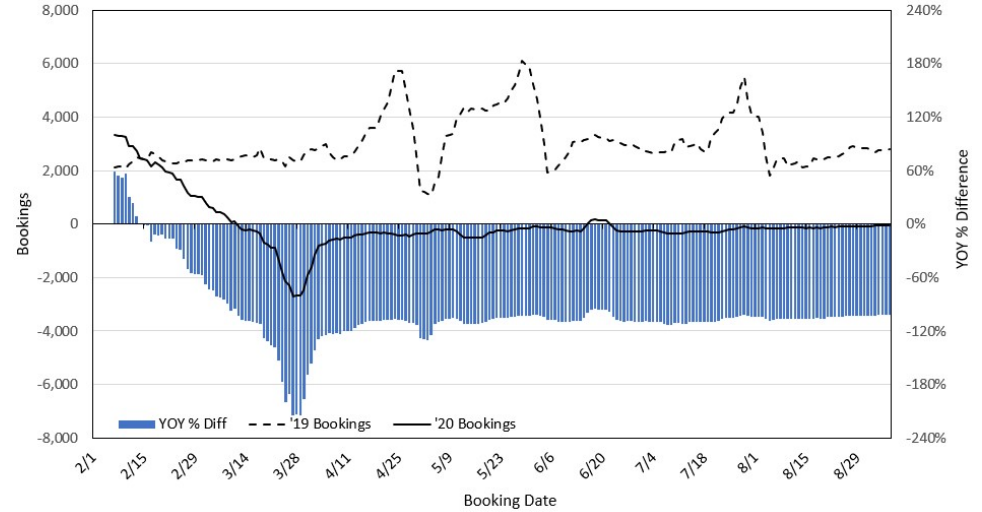
### Travel Agency Bookings to Hawaii for Future Arrivals\* Based on a 7-day Moving Average, 2020 vs 2019 U.S.



\*Future Arrivals refers to all arrivals that are 'future' relative to the referenced booking date.  
Source: Global Agency Pro

Update: Sep 7, 2020

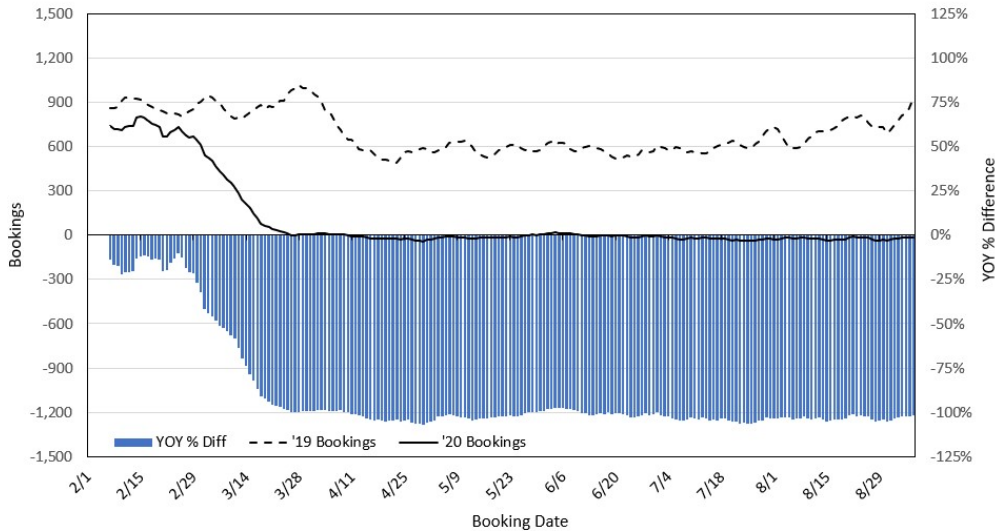
### Travel Agency Bookings to Hawaii for Future Arrivals\* Based on a 7-day Moving Average, 2020 vs 2019 Japan



\*Future Arrivals refers to all arrivals that are 'future' relative to the referenced booking date.  
Source: Global Agency Pro

Update: Sep 7, 2020

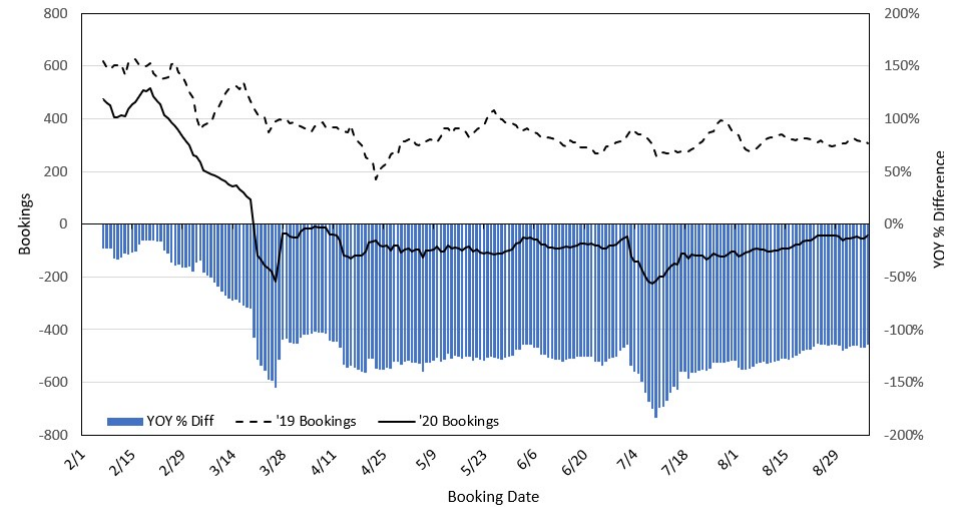
### Travel Agency Bookings to Hawaii for Future Arrivals\* Based on a 7-day Moving Average, 2020 vs 2019 Canada



\*Future Arrivals refers to all arrivals that are 'future' relative to the referenced booking date.  
Source: Global Agency Pro

Update: Sep 7, 2020

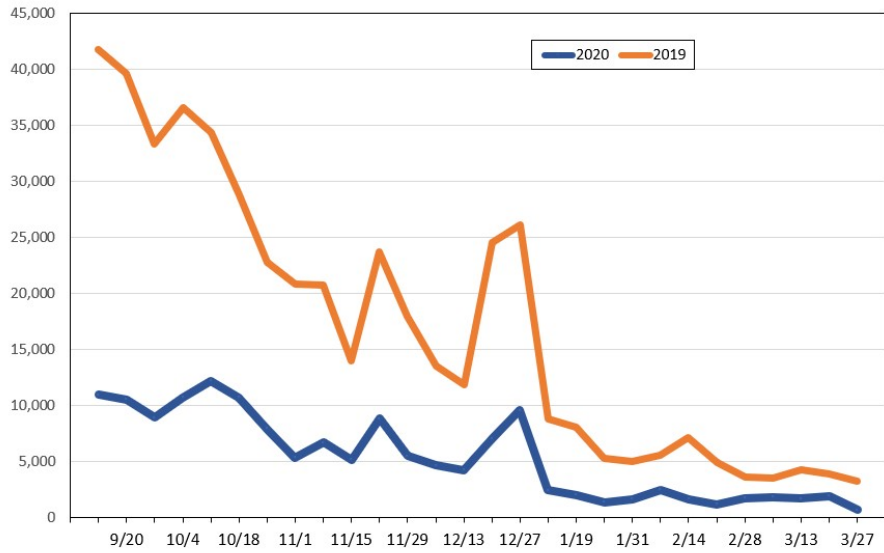
### Travel Agency Bookings to Hawaii for Future Arrivals\* Based on a 7-day Moving Average, 2020 vs 2019 Australia



\*Future Arrivals refers to all arrivals that are 'future' relative to the referenced booking date.  
Source: Global Agency Pro

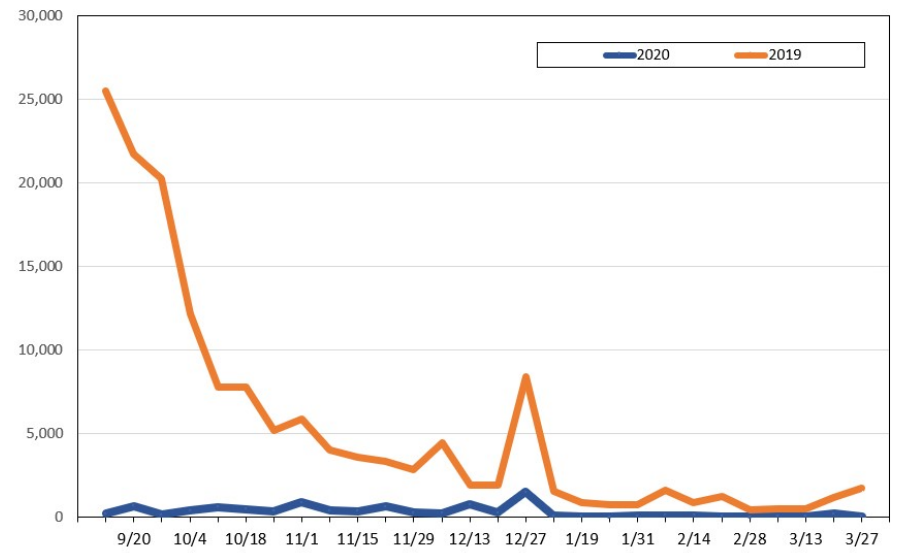
Update: Sep 7, 2020

**Travel Agency Weekly Bookings for Future Travel to Hawai'i as of September 7, 2020**  
U.S.



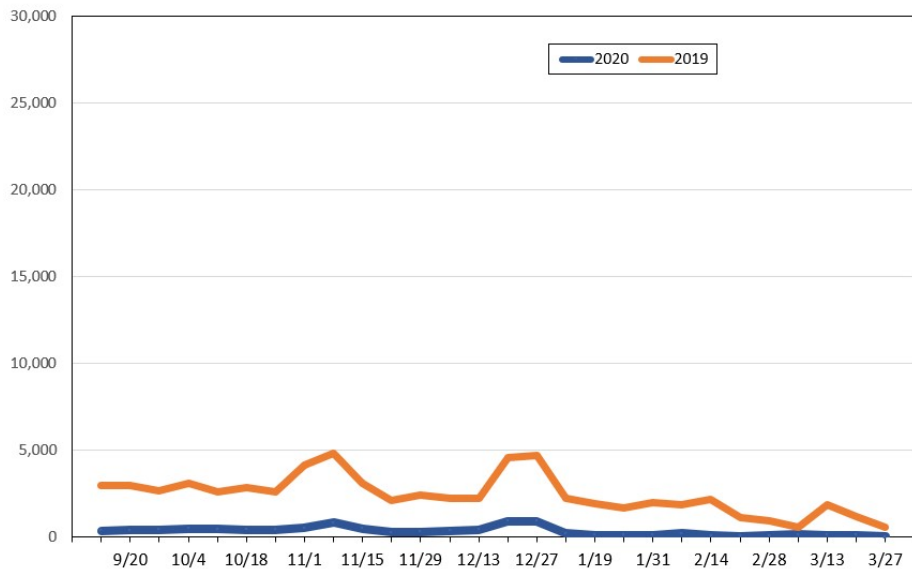
Source: Global Agency Pro, as of September 7, 2020

**Travel Agency Weekly Bookings for Future Travel to Hawai'i as of September 7, 2020**  
Japan



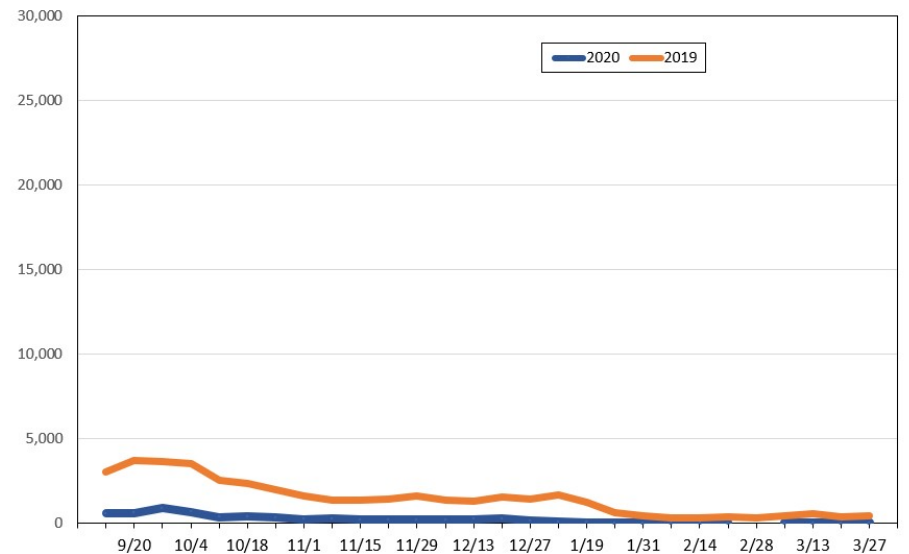
Source: Global Agency Pro, as of September 7, 2020

**Travel Agency Weekly Bookings for Future Travel to Hawai'i as of September 7, 2020**  
Canada



Source: Global Agency Pro, as of September 7, 2020

**Travel Agency Weekly Bookings for Future Travel to Hawai'i as of September 7, 2020**  
Australia



Source: Global Agency Pro, as of September 7, 2020