

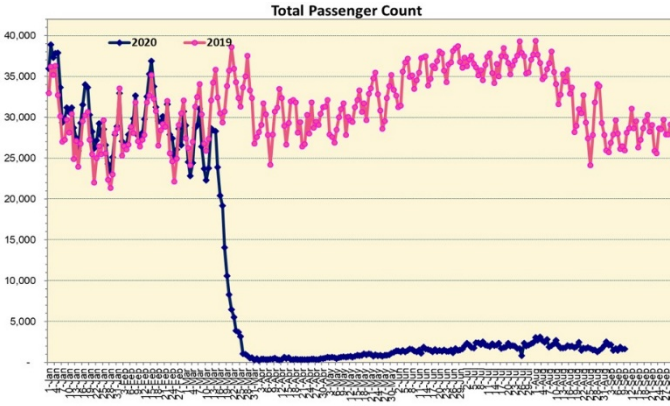
# HTA COVID-19 UPDATE

(Issued: 9/10/20 @ 4:00pm)

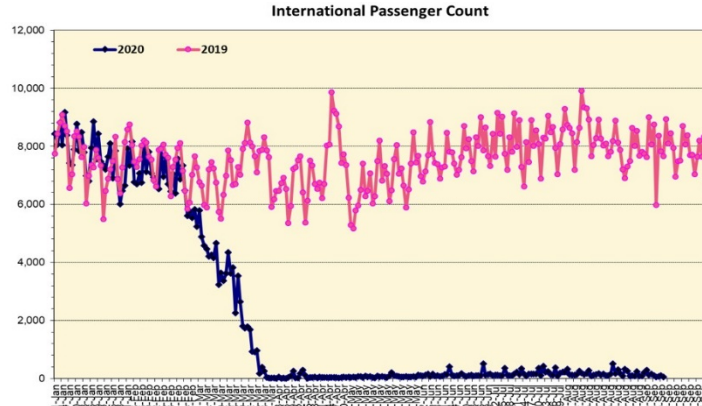
## Novel Coronavirus in Hawaii

COVID-19 Positive\* Cases

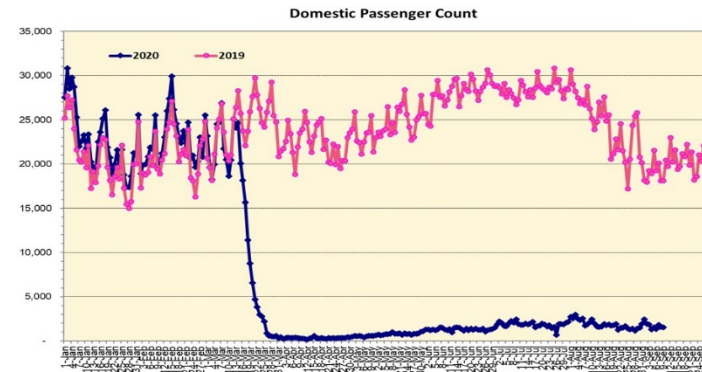
Cumulative totals as of 12:00 noon on September 10, 2020



Note: Excludes flights from Canada



Note: Excludes flights from Canada



### Daily Passenger Count Table

09/09/2020	Domestic	International	Total
Oahu	1327	111	1438
Maui	108		108
Island of Hawaii	86		86
Kauai	0		0
State	1521	111	1632

Market Impact Update: <https://www.dropbox.com/09/10/20 HTA COVID19 Update>

09/09/20 Hawaii Passenger Trans-Pacific Arrivals by Air	Honolulu (HNL)	Kahului (OGG)	Kona (KOA)	Lihue (LIH)	Grand Total
Airline Crew	202	18	8	4	232
Essential Worker	85	21	19	2	127
Intended Resident	146	20	9	1	176
Military or Federal Government	130	1	0	0	131
Other	40	4	3	2	49
Other Business	59	11	6	1	77
Pleasure/Vacation	32	7	7	15	61
Returning Resident	487	59	43	9	598
Sports Event	4	0	0	0	4
To Attend School	9	0	3	0	12
Visiting Friends or Relatives	207	20	34	3	264
(blank)	0	0	0	0	0
Transit	N/A	N/A	N/A	N/A	N/A
<b>Grand Total</b>	<b>1,401</b>	<b>161</b>	<b>132</b>	<b>37</b>	<b>1,731</b>

Source: Safe Travels program developed by the State of Hawaii Office of Enterprise Technology Services

Note: The data is preliminary and subject to change

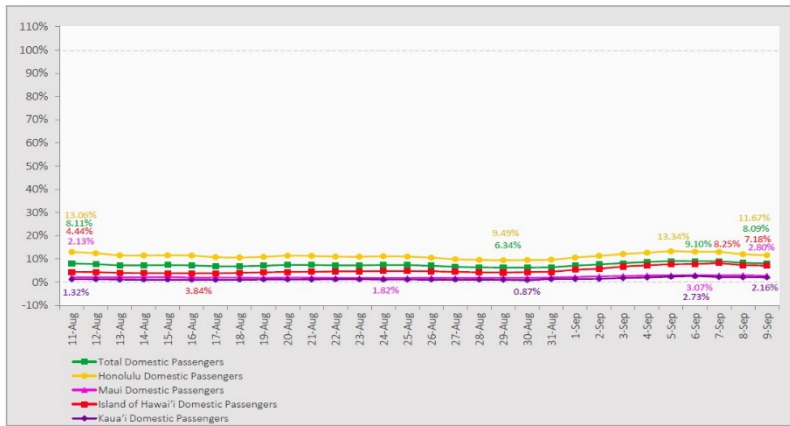
Statewide	Total
Total Cases	10292 (169 new)
Released from Isolation†	3176
Required Hospitalization	610
Deaths	94
BY COUNTY	Total
Hawaii County	
Total Cases	541
Released from Isolation†	252
Required Hospitalization	23
Deaths	3
Honolulu County	
Total Cases	9304
Released from Isolation†	2649
Required Hospitalization	537
Deaths	81
Kauai County	
Total Cases	58
Released from Isolation†	57
Required Hospitalization	1
Deaths	0
Maui County	
Total Cases	363
Released from Isolation†	218
Required Hospitalization	47
Deaths	9
HI Residents diagnosed outside of HI	26
County Pending	0

\*includes presumptive and confirmed cases, data are preliminary and subject to change; note that CDC provides case counts according to states of residence.

†Isolation should be maintained until at least 3 days (72 hours) after resolution of fever and myalgia without the use of antipyretics OR at least 7 days have passed since symptom onset, whichever is longer.

### 7-Day Domestic by Island Moving Average Daily Passenger Volume

2020 Volume as Percentage of 2019 Volume  
Through September 9, 2020



Source: HVCB analysis based on data from DBEDT  
Note: Passenger volume figures include both visitors and residents.

### Domestic by Island Month-to-Date and Year-to-Date Daily Passenger Volume

2020 Volume versus 2019 Volume  
Through September 9, 2020

September 2020 (Month-to-Date through September 9)

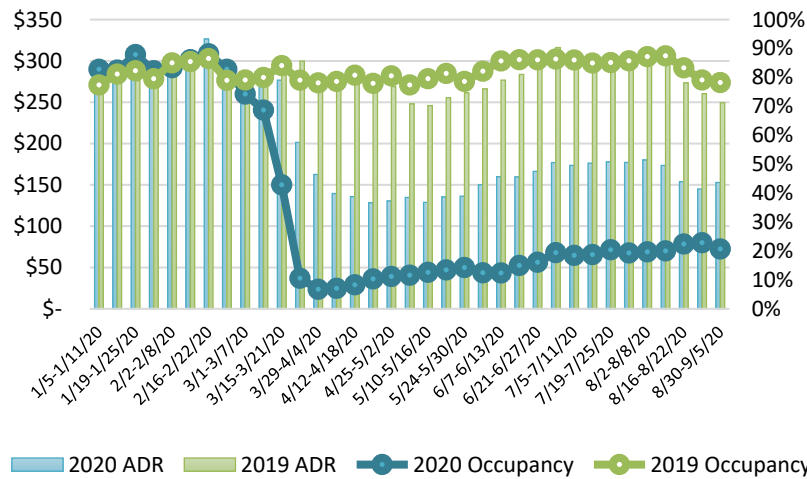
	2020	2019	Volume Change	Percent Change
Honolulu	12,369	98,334	-85,965	-87.4%
Maui County	1,368	46,457	-45,089	-97.1%
Island of Hawai'i	1,295	16,234	-14,939	-92.0%
Kaua'i	256	15,074	-14,818	-98.3%
Total	15,288	176,099	-160,811	-91.3%

2020 (Year-to-Date through September 9)

	2020	2019	Volume Change	Percent Change
Honolulu	1,138,605	3,242,198	-2,103,593	-64.9%
Maui County	454,944	1,582,281	-1,127,337	-71.2%
Island of Hawai'i	227,075	713,759	-486,684	-68.2%
Kaua'i	151,374	541,811	-390,437	-72.1%
Total	1,971,998	6,080,049	-4,108,051	-67.6%

Source: HVCB analysis based on data from DBEDT  
Note: Passenger volume figures include both visitors and residents. Total includes other international passengers. 2020 includes one additional day due to Leap Year (February 29th, 2020).

### State of Hawai'i Hotel Performance by Week - 2020 vs 2019



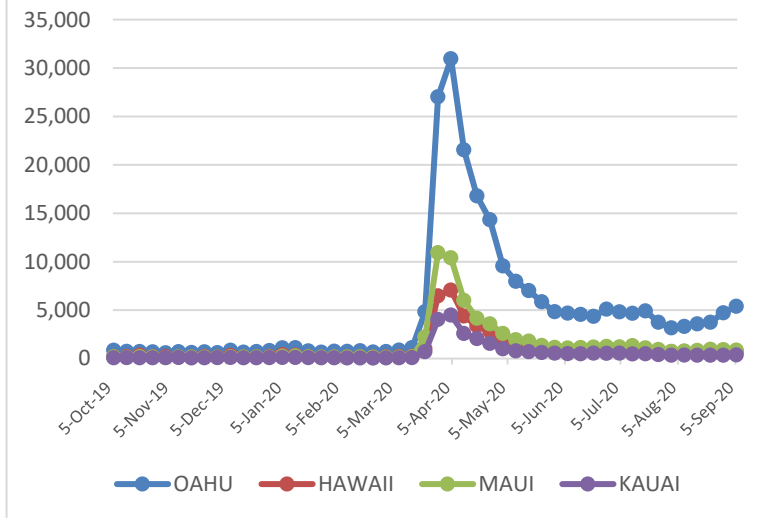
Source: STR, Inc. © Copyright 2020 Hawai'i Tourism Authority

### Hawaii Hotel Performance Info:

For the week of August 30 – September 5, 2020

	Occupancy	ADR	RevPAR
State of Hawaii	20.7%	\$ 152.88	\$ 31.58
Oahu	24.4%	\$ 152.91	\$ 37.27
Maui County	13.7%	\$ 179.66	\$ 24.66
Kauai County	15.0%	\$ 147.57	\$ 22.11
Island of Hawaii	21.9%	\$ 126.37	\$ 27.65

### 2020 Initial Weekly Unemployment Claims by Island



### Weekly Unemployment Initial Claims: September 5, 2020

State of Hawaii	7,504
C&C of Oahu	5,394
Hawaii County	737
Maui County	860
Kauai County	376
Agent (filed in Hawaii against another state)	137

## News Highlights

September 10, 2020

**Hawaii News Now:** [With beaches, parks open for solo activity, some say that could mean more problems add space](#)

**Hawaii News Now:** [New COVID-19 cases are declining, but hospitals continue to grapple with nursing shortage](#)

**Hawaii News Now:** [‘COVID Pau’ initiative aims to improve access to information to stop spread of virus](#)

**Honolulu Star Advertiser:** [Union shares hotel safety inspection results](#)

**Honolulu Star Advertiser:** [Forecast sees 11% drop for Hawaii tax revenue](#)

**Hawaii Public Radio:** [Tourism Levels Likely To Remain Depressed Well Into 2021](#)

**West Hawaii Today:** [Green says state should be ready to open Oct. 1](#)

**Honolulu Magazine:** [Rethinking Hawaii: How the Visitor Industry Should Operate in the Future](#)

**Travel Pulse:** [John De Fries Named Hawaii Tourism Authority President and CEO](#)

#### Helpful Resources

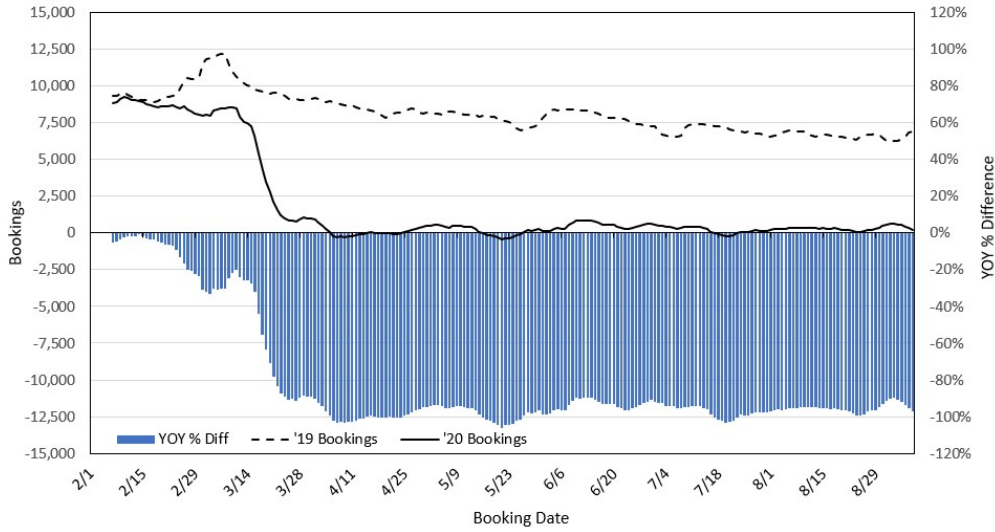
Department of Health  
<https://hawaiiocovid19.com/>

Department of Health  
<https://health.hawaii.gov/docd/advisories/novel-coronavirus-2019>

Dept. of Business, Economic Development & Tourism  
<https://dbedt.hawaii.gov/economic/covid19/>

Department of Transportation  
<https://hidot.hawaii.gov/coronavirus/>

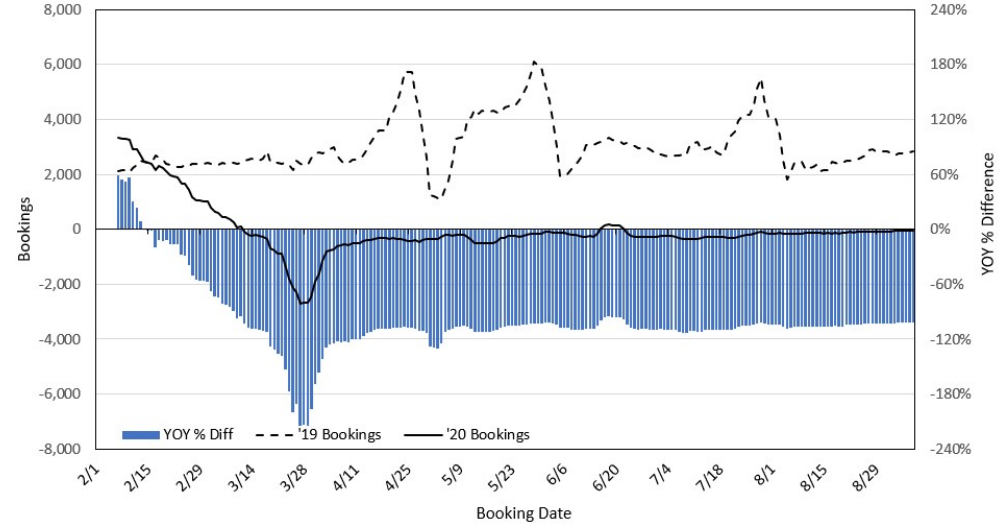
### Travel Agency Bookings to Hawaii for Future Arrivals\* Based on a 7-day Moving Average, 2020 vs 2019 U.S.



\*Future Arrivals refers to all arrivals that are 'future' relative to the referenced booking date.  
Source: Global Agency Pro

Update: Sep 8, 2020

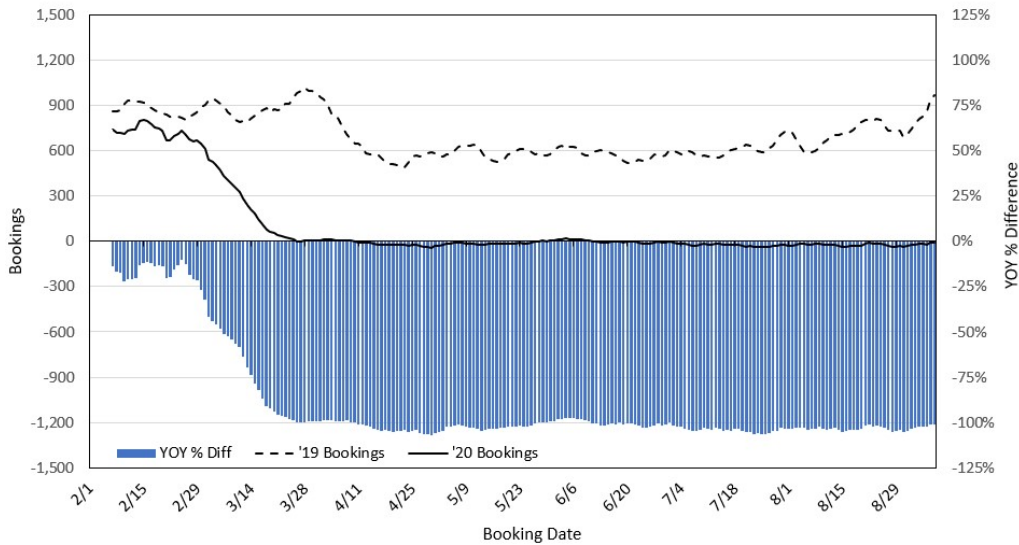
### Travel Agency Bookings to Hawaii for Future Arrivals\* Based on a 7-day Moving Average, 2020 vs 2019 Japan



\*Future Arrivals refers to all arrivals that are 'future' relative to the referenced booking date.  
Source: Global Agency Pro

Update: Sep 8, 2020

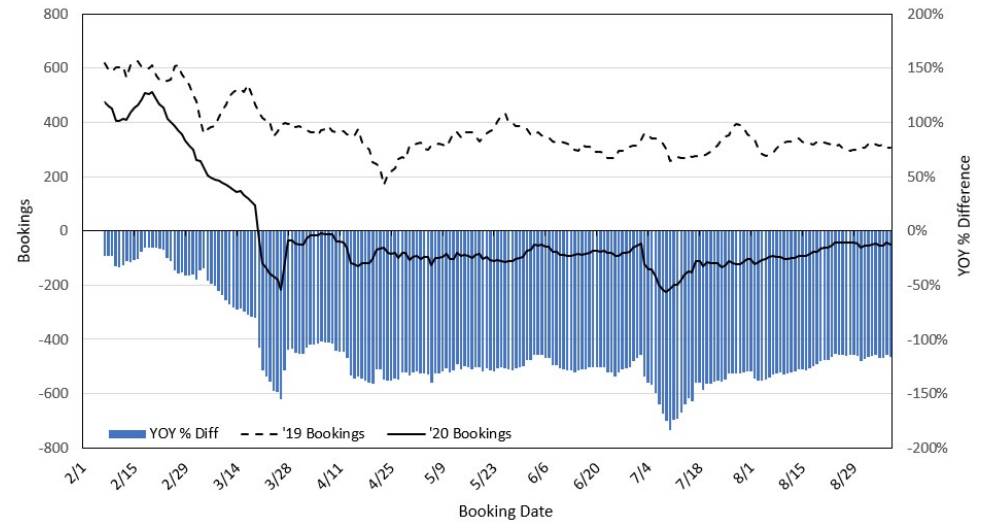
### Travel Agency Bookings to Hawaii for Future Arrivals\* Based on a 7-day Moving Average, 2020 vs 2019 Canada



\*Future Arrivals refers to all arrivals that are 'future' relative to the referenced booking date.  
Source: Global Agency Pro

Update: Sep 8, 2020

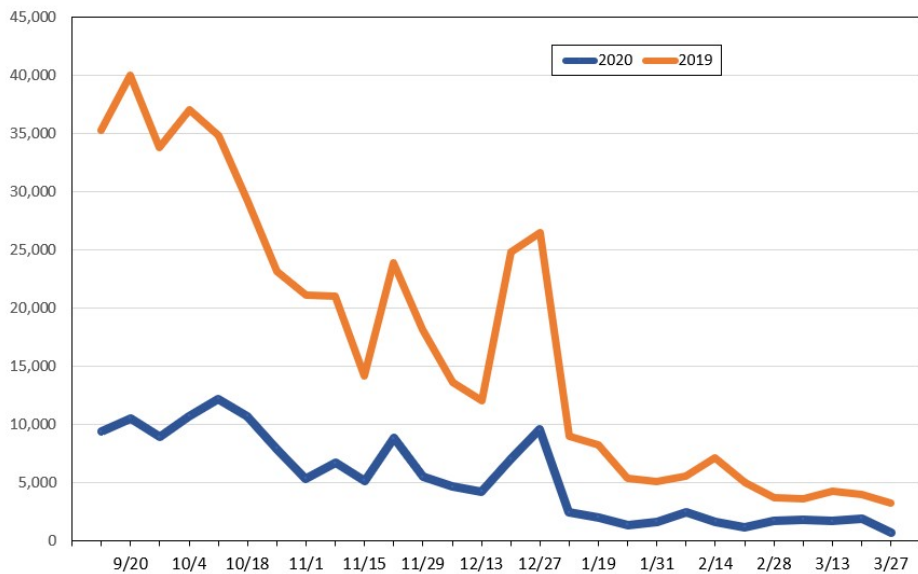
### Travel Agency Bookings to Hawaii for Future Arrivals\* Based on a 7-day Moving Average, 2020 vs 2019 Australia



\*Future Arrivals refers to all arrivals that are 'future' relative to the referenced booking date.  
Source: Global Agency Pro

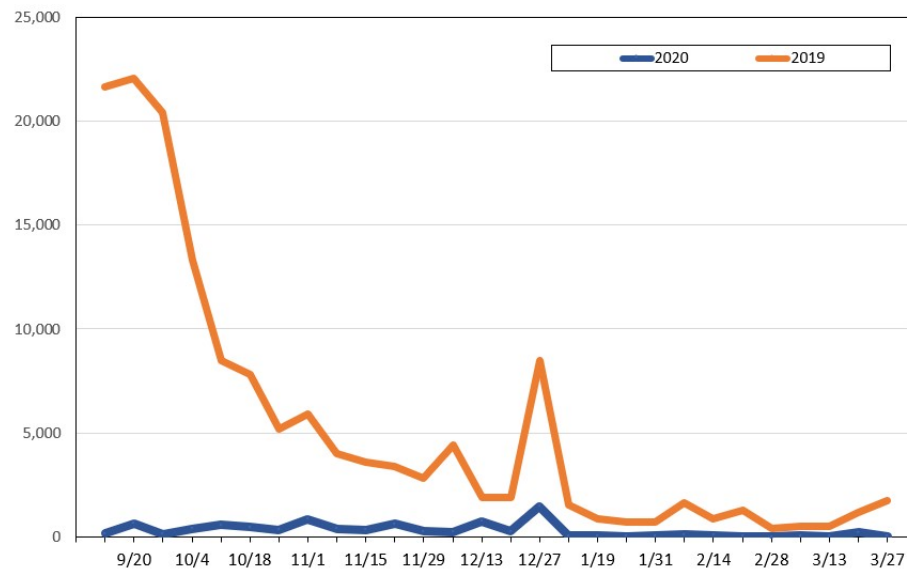
Update: Sep 8, 2020

**Travel Agency Weekly Bookings for Future Travel to Hawai'i as of September 8, 2020**  
U.S.



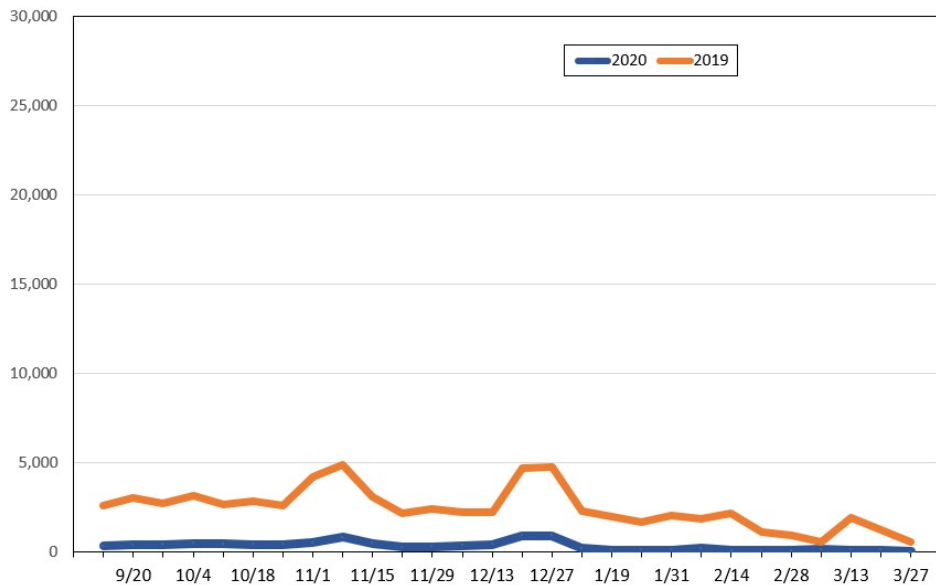
Source: Global Agency Pro, as of September 8, 2020

**Travel Agency Weekly Bookings for Future Travel to Hawai'i as of September 8, 2020**  
Japan



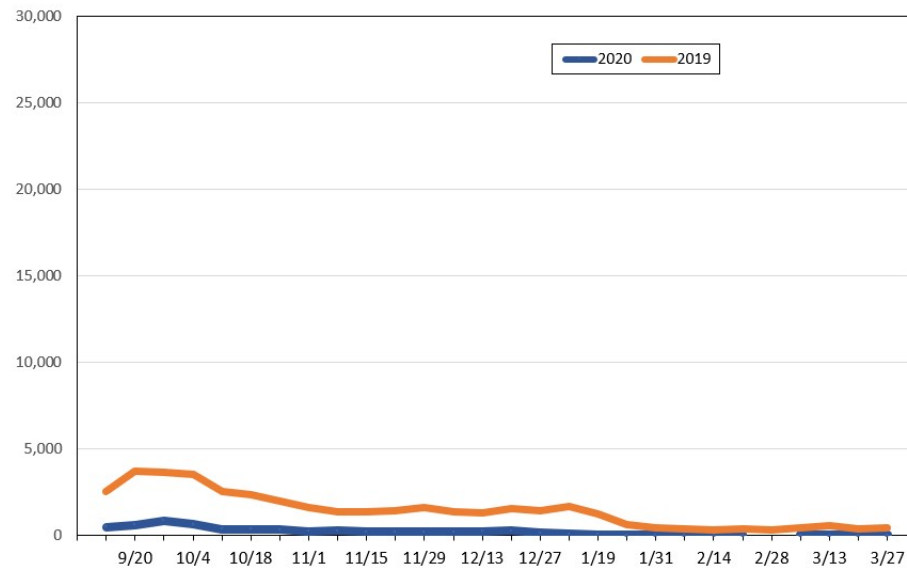
Source: Global Agency Pro, as of September 8, 2020

**Travel Agency Weekly Bookings for Future Travel to Hawai'i as of September 8, 2020**  
Canada



Source: Global Agency Pro, as of September 8, 2020

**Travel Agency Weekly Bookings for Future Travel to Hawai'i as of September 8, 2020**  
Australia



Source: Global Agency Pro, as of September 8, 2020