

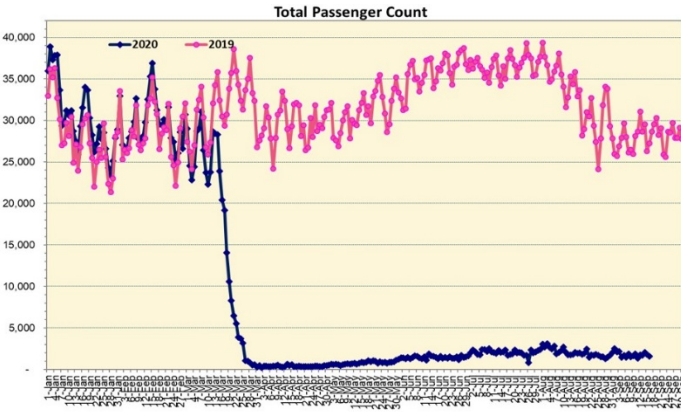
HTA COVID-19 UPDATE

(Issued: 9/17/20 @ 4:30pm)

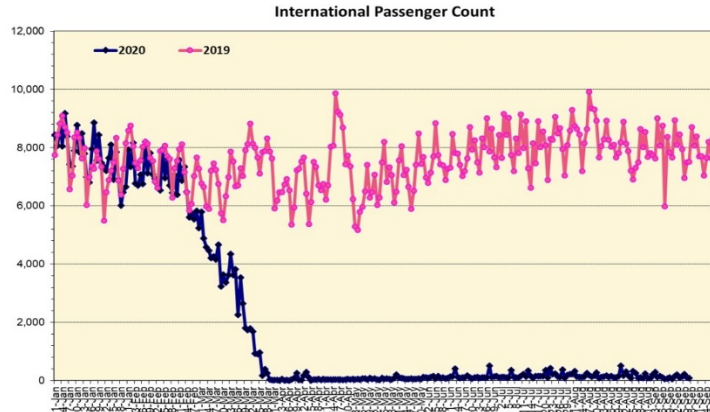
Novel Coronavirus in Hawaii

COVID-19 Positive* Cases

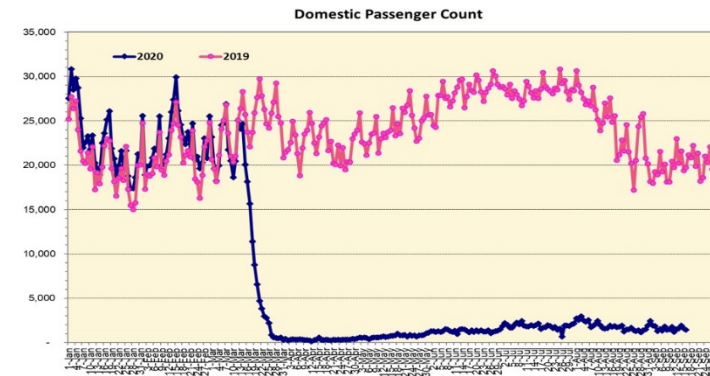
Cumulative totals as of 12:00 noon on September 17, 2020



Note: Excludes flights from Canada



Note: Excludes flights from Canada



Daily Passenger Count Table

09/16/2020	Domestic	International	Total
Oahu	1225	113	1338
Maui	117		117
Island of Hawaii	100		100
Kauai	0		0
State	1442	113	1555

Market Impact Update: <https://www.dropbox.com/09/17/20 HTA COVID19 Update>

09/16/20 Hawaii Passenger Trans-Pacific Arrivals by Air	Honolulu (HNL)	Kahului (OGG)	Kona (KOA)	Lihue (LIH)	Grand Total
Airline Crew	216	23	9	3	251
Essential Worker	98	29	9	3	139
Incentive Trip	1	0	0	0	1
Intended Resident	97	12	20	8	137
Military or Federal Government	143	4	0	2	149
Other	150	4	2	1	157
Other Business	60	10	12	2	84
Pleasure/Vacation	47	2	18	2	69
Returning Resident	460	74	43	8	585
To Attend School	7	2	0	0	9
Visiting Friends or Relatives	233	28	26	5	292
(blank)	0	0	0	0	0
Transit	N/A	N/A	N/A	N/A	N/A
Grand Total	1,512	188	139	34	1,873

Source: Safe Travels program developed by the State of Hawaii Office of Enterprise Technology Services

Note: The data is preliminary and subject to change

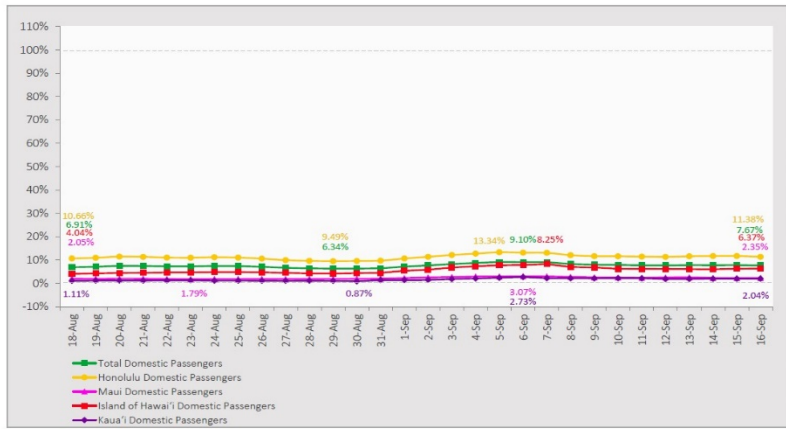
Statewide	Total
Total Cases	11,105 (160 new)
Released from Isolation+	4,248
Required Hospitalization	685
Deaths	107
BY COUNTY	Total
Hawaii County	
Total Cases	623
Released from Isolation+	421
Required Hospitalization	31
Deaths	3
Honolulu County	
Total Cases	10,015
Released from Isolation+	3,522
Required Hospitalization	604
Deaths	94
Kauai County	
Total Cases	58
Released from Isolation+	57
Required Hospitalization	1
Deaths	0
Maui County	
Total Cases	381
Released from Isolation+	248
Required Hospitalization	47
Deaths	9
HI Residents diagnosed outside of HI	28
County Pending	0

*includes presumptive and confirmed cases, data are preliminary and subject to change; note that CDC provides case counts according to states of residence.

+Isolation should be maintained until at least 3 days (72 hours) after resolution of fever and myalgia without the use of antipyretics OR at least 7 days have passed since symptom onset, whichever is longer.

7-Day Domestic by Island Moving Average Daily Passenger Volume

2020 Volume as Percentage of 2019 Volume
Through September 16, 2020



Source: HVCB analysis based on data from DBEDT
Note: Passenger volume figures include both visitors and residents.

Domestic by Island Month-to-Date and Year-to-Date Daily Passenger Volume

2020 Volume versus 2019 Volume
Through September 16, 2020

September 2020 (Month-to-Date through September 16)

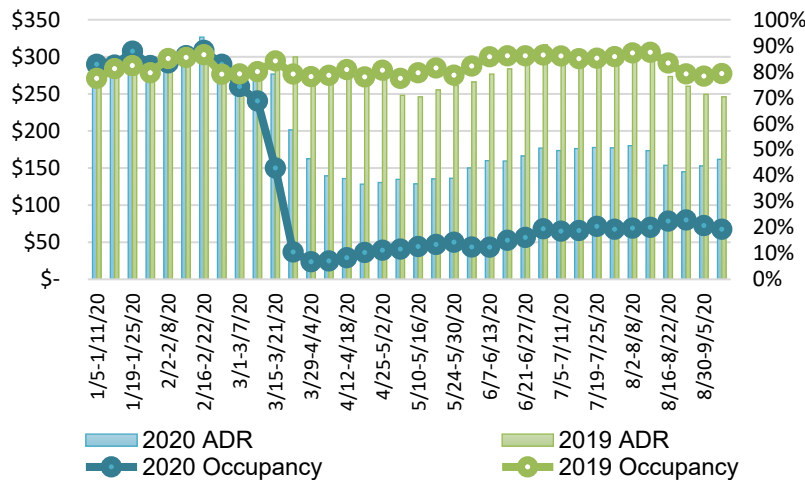
	2020	2019	Volume Change	Percent Change
Honolulu	21,403	175,767	-154,364	-87.8%
Maui County	2,198	84,279	-82,081	-97.4%
Island of Hawai'i	2,089	29,126	-27,037	-92.8%
Kaua'i	514	28,037	-27,523	-98.2%
Total	26,204	317,209	-291,005	-91.7%

2020 (Year-to-Date through September 16)

	2020	2019	Volume Change	Percent Change
Honolulu	1,147,639	3,319,631	-2,171,992	-65.4%
Maui County	455,774	1,620,103	-1,164,329	-71.9%
Island of Hawai'i	227,869	726,651	-498,782	-68.6%
Kaua'i	151,632	554,774	-403,142	-72.7%
Total	1,982,914	6,221,159	-4,238,246	-68.1%

Source: HVCB analysis based on data from DBEDT
Note: Passenger volume figures include both visitors and residents. Total includes other international passengers. 2020 includes one additional day due to Leap Year (February 29th, 2020).

State of Hawai'i Hotel Performance by Week - 2020 vs 2019



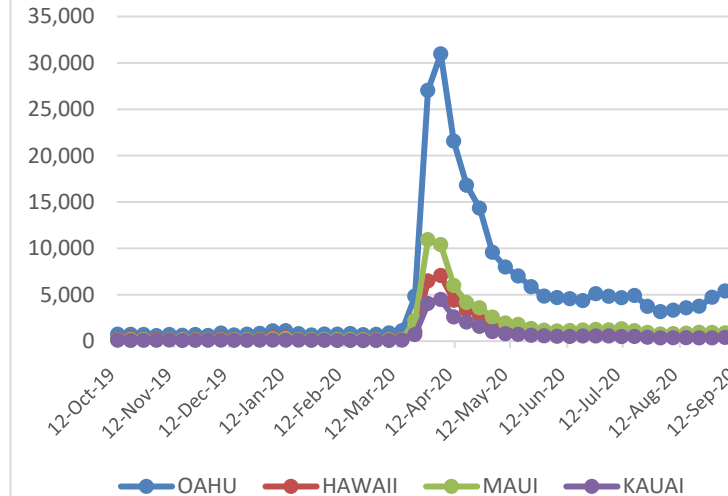
Source: STR, Inc. © Copyright 2020 Hawai'i Tourism Authority

Hawaii Hotel Performance Info:

For the week of September 6 – September 12, 2020

	Occupancy	ADR	RevPAR
State of Hawaii	19.3%	\$ 161.81	\$ 31.16
Oahu	21.1%	\$ 159.44	\$ 33.64
Maui County	17.3%	\$ 189.80	\$ 32.74
Kauai County	14.8%	\$ 149.74	\$ 22.13
Island of Hawaii	19.1%	\$ 130.76	\$ 24.94

2020 Initial Weekly Unemployment Claims by Island



Weekly Unemployment Initial Claims: September 12, 2020

State of Hawaii	7,338
C&C of Oahu	5,373
Hawaii County	727
Maui County	771
Kauai County	319
Agent (filed in Hawaii against another state)	148

News Highlights

September 17, 2020

Hawaii News Now: [In August, Honolulu police made 65 arrests for emergency order violations](#)

Hawaii News Now: [In new video series, COVID-19 survivors recount battle with the virus in their own words](#)

KHON2: [New DOH director sets priorities for COVID-19 response](#)

West Hawaii Today: [Council endorses voluntary contact tracing apps](#)

Hawaii Magazine: [Plans to Reopen Tourism in Hawaii Might Get Postponed Again](#)

Newsweek: [Hawaii Loses Half of Economic Recovery Amid Second COVID Lockdown as Cases Spike](#)

Travel + Leisure: [Travelers to Hawaii Can Bypass Quarantine With a Negative COVID-19 Test Starting Oct. 15](#)

Forbes: [Coronavirus Travel Restrictions Update For September](#)

The Points Guy: [Hawaii approves the potential use of 'resort bubbles' for quarantined travelers](#)

Helpful Resources

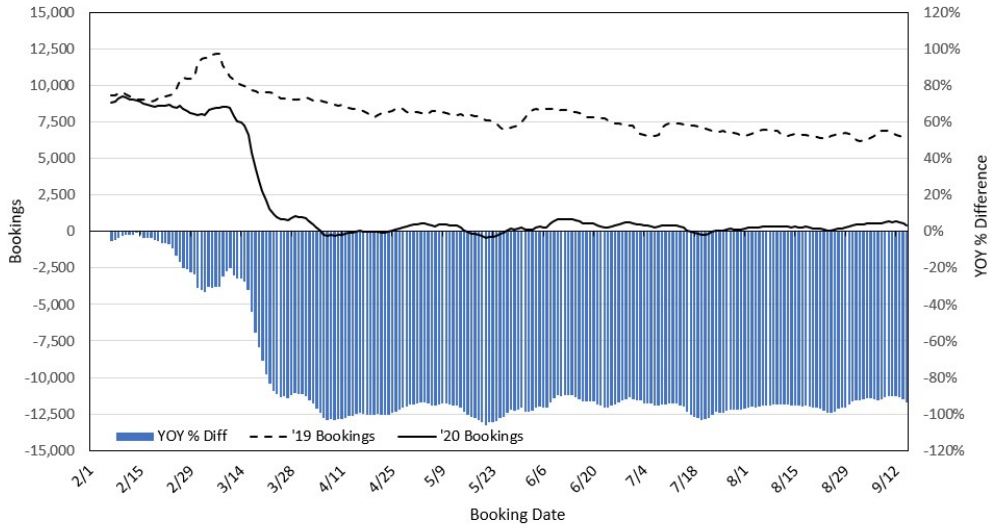
Department of Health
<https://hawaiiocovid19.com/>

Department of Health
<https://health.hawaii.gov/docd/advisories/novel-coronavirus-2019>

Dept. of Business, Economic Development & Tourism
<https://dbedt.hawaii.gov/economic/covid19/>

Department of Transportation
<https://hidot.hawaii.gov/coronavirus/>

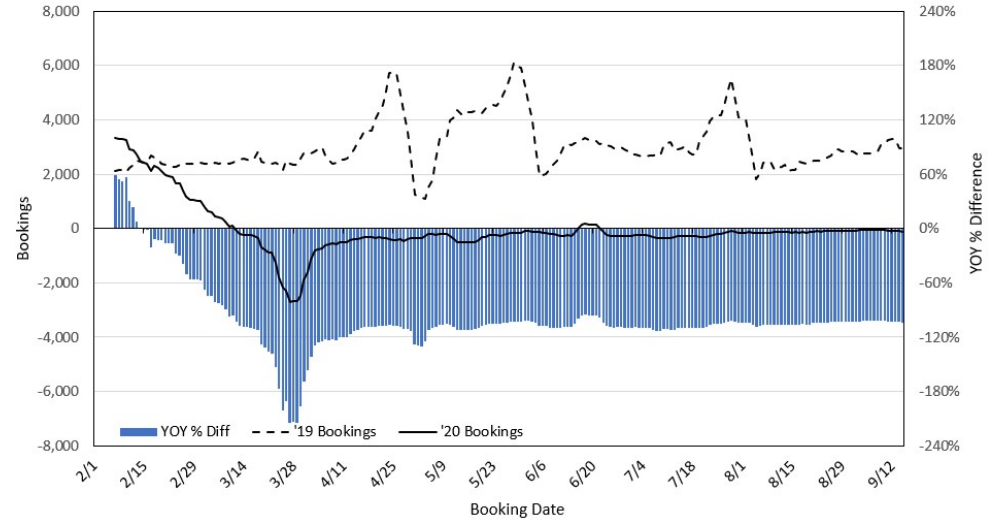
**Travel Agency Bookings to Hawaii for Future Arrivals*
Based on a 7-day Moving Average, 2020 vs 2019
U.S.**



*Future Arrivals refers to all arrivals that are 'future' relative to the referenced booking date.
Source: Global Agency Pro

Update: Sep 15, 2020

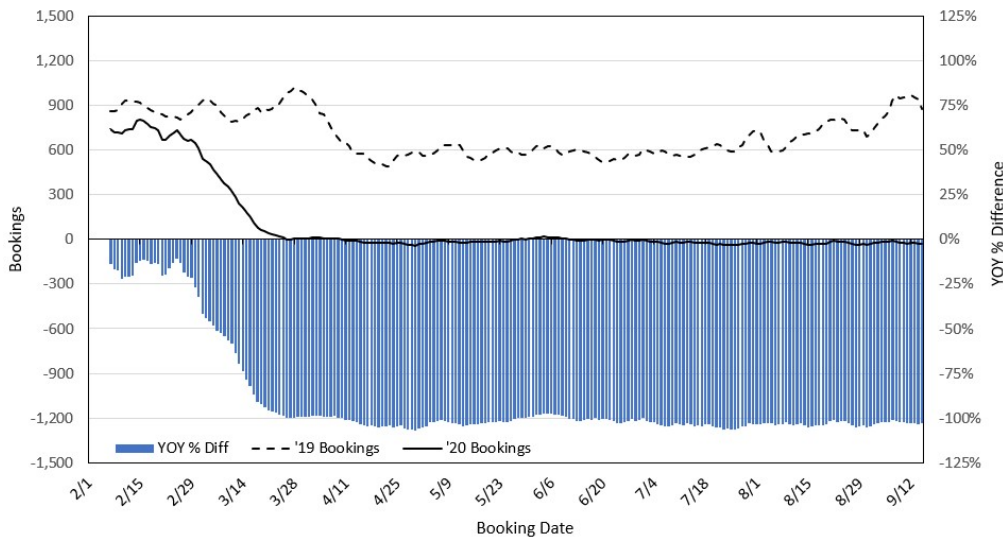
**Travel Agency Bookings to Hawaii for Future Arrivals*
Based on a 7-day Moving Average, 2020 vs 2019
Japan**



*Future Arrivals refers to all arrivals that are 'future' relative to the referenced booking date.
Source: Global Agency Pro

Update: Sep 15, 2020

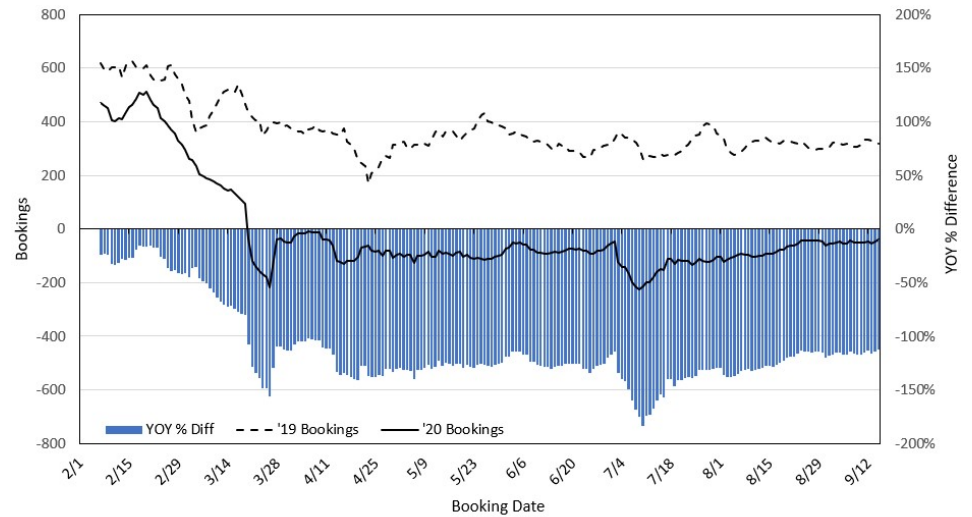
**Travel Agency Bookings to Hawaii for Future Arrivals*
Based on a 7-day Moving Average, 2020 vs 2019
Canada**



*Future Arrivals refers to all arrivals that are 'future' relative to the referenced booking date.
Source: Global Agency Pro

Update: Sep 15, 2020

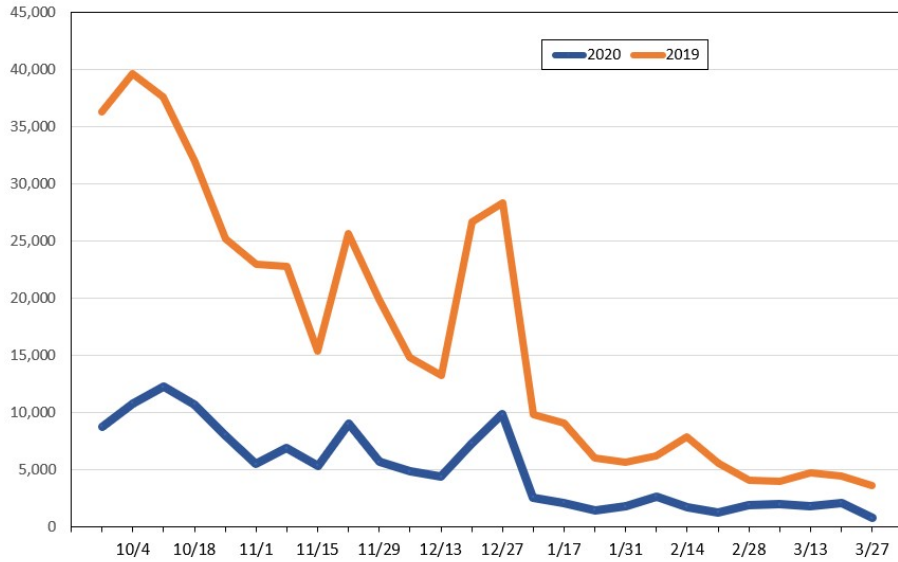
**Travel Agency Bookings to Hawaii for Future Arrivals*
Based on a 7-day Moving Average, 2020 vs 2019
Australia**



*Future Arrivals refers to all arrivals that are 'future' relative to the referenced booking date.
Source: Global Agency Pro

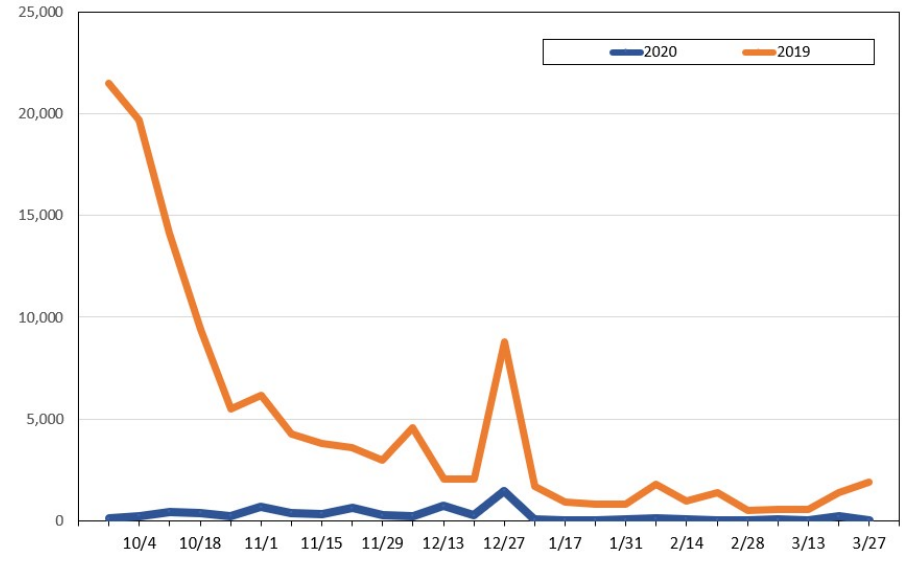
Update: Sep 15, 2020

Travel Agency Weekly Bookings for Future Travel to Hawai'i as of September 15, 2020
U.S.



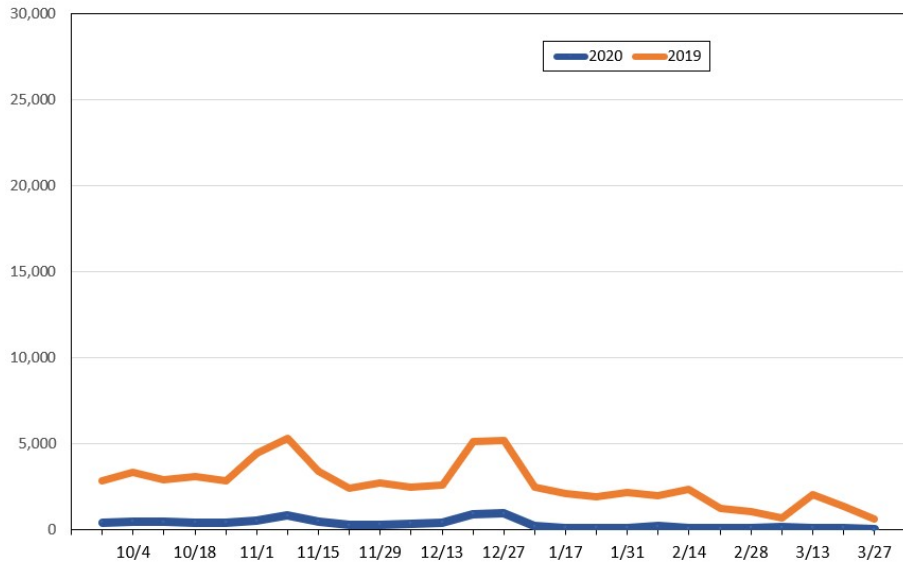
Source: Global Agency Pro, as of September 15, 2020

Travel Agency Weekly Bookings for Future Travel to Hawai'i as of September 15, 2020
Japan



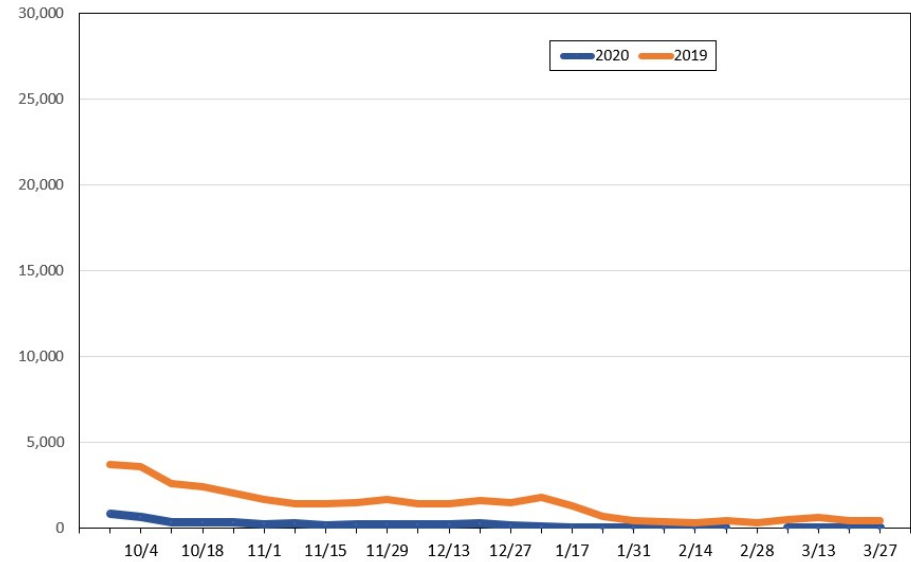
Source: Global Agency Pro, as of September 15, 2020

Travel Agency Weekly Bookings for Future Travel to Hawai'i as of September 15, 2020
Canada



Source: Global Agency Pro, as of September 15, 2020

Travel Agency Weekly Bookings for Future Travel to Hawai'i as of September 15, 2020
Australia



Source: Global Agency Pro, as of September 15, 2020