

HTA COVID-19 UPDATE

(Issued: 9/18/20 @ 5:00pm)

Novel Coronavirus in Hawaii

COVID-19 Positive* Cases

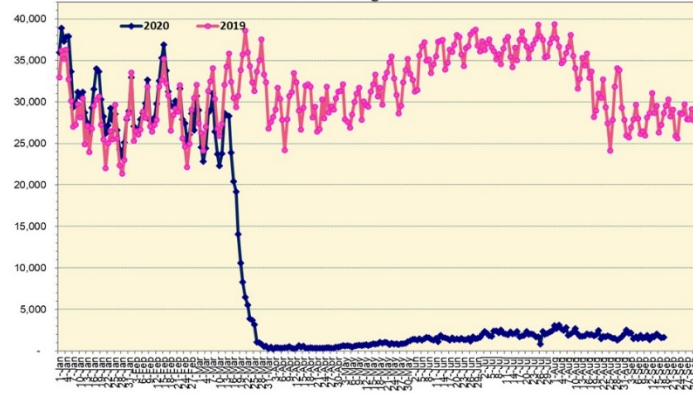
Cumulative totals as of 12:00 noon on September 18, 2020

Statewide	Total
Total Cases	11,217 (114 new)
Released from Isolation†	4,394
Required Hospitalization	700
Deaths	120
BY COUNTY	Total
Hawaii County	
Total Cases	632
Released from Isolation†	433
Required Hospitalization	32
Deaths	15
Honolulu County	
Total Cases	10,119
Released from Isolation†	3,655
Required Hospitalization	617
Deaths	95
Kauai County	
Total Cases	57
Released from Isolation†	56
Required Hospitalization	1
Deaths	0
Maui County	
Total Cases	381
Released from Isolation†	250
Required Hospitalization	48
Deaths	9
HI Residents diagnosed outside of HI	28
County Pending	0

*includes presumptive and confirmed cases, data are preliminary and subject to change; note that CDC provides case counts according to states of residence.

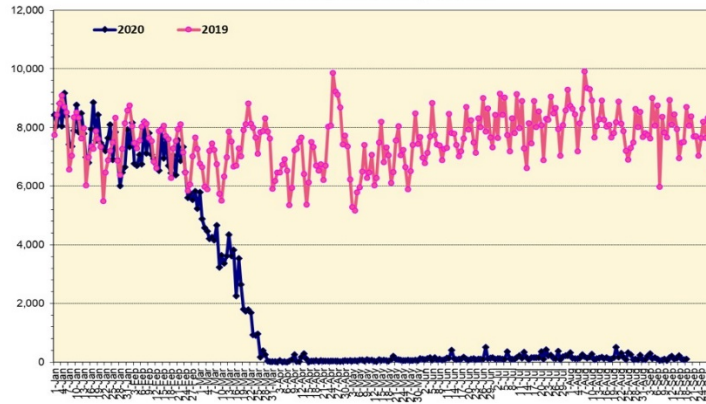
†Isolation should be maintained until at least 3 days (72 hours) after resolution of fever and myalgia without the use of antipyretics OR at least 7 days have passed since symptom onset, whichever is longer.

Total Passenger Count



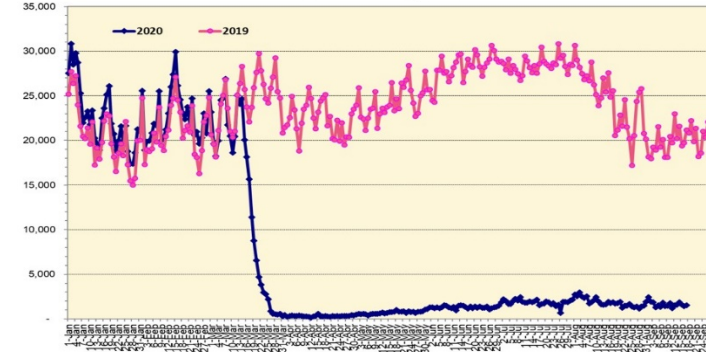
Note: Excludes flights from Canada

International Passenger Count



Note: Excludes flights from Canada

Domestic Passenger Count



Daily Passenger Count Table

09/17/2020	Domestic	International	Total
Oahu	1159	83	1242
Maui	146		146
Island of Hawaii	165		165
Kauai	67		67
State	1537	83	1620

Market Impact Update: <https://www.dropbox.com/09/18/20 HTA COVID19 Update>

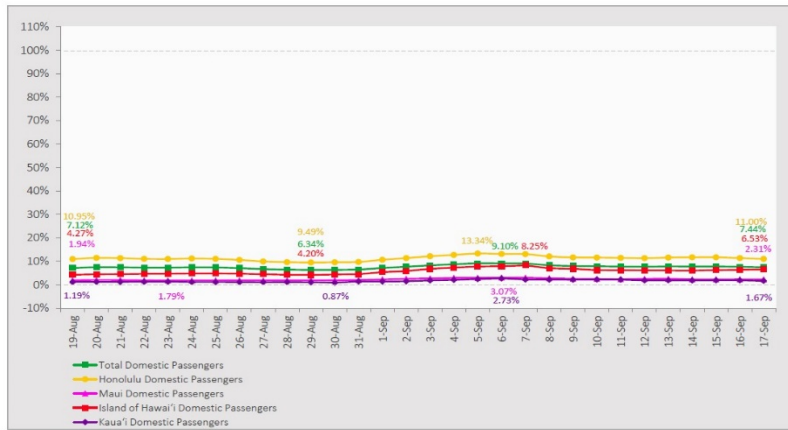
09/17/20 Hawaii Passenger Trans-Pacific Arrivals by Air	Honolulu (HNL)	Kahului (OGG)	Kona (KOA)	Lihue (LIH)	Grand Total
Airline Crew	238	24	16	9	287
Essential Worker	68	29	21	7	125
Honeymoon	2	0	0	0	2
Intended Resident	99	23	40	14	176
Military or Federal Government	135	0	0	2	137
Other	137	4	13	4	158
Other Business	51	19	14	6	90
Pleasure/Vacation	35	17	8	4	64
Returning Resident	404	84	67	49	604
To Attend School	7	0	0	0	7
Visiting Friends or Relatives	194	28	51	7	280
(blank)	0	0	0	0	0
Transit	N/A	N/A	N/A	N/A	N/A
Grand Total	1,370	228	230	102	1,930

Source: Safe Travels program developed by the State of Hawaii Office of Enterprise Technology Services

Note: The data is preliminary and subject to change

7-Day Domestic by Island Moving Average Daily Passenger Volume

2020 Volume as Percentage of 2019 Volume
Through September 17, 2020



Source: HVCB analysis based on data from DBEDT
Note: Passenger volume figures include both visitors and residents.

Domestic by Island Month-to-Date and Year-to-Date Daily Passenger Volume

2020 Volume versus 2019 Volume
Through September 17, 2020

September 2020 (Month-to-Date through September 17)

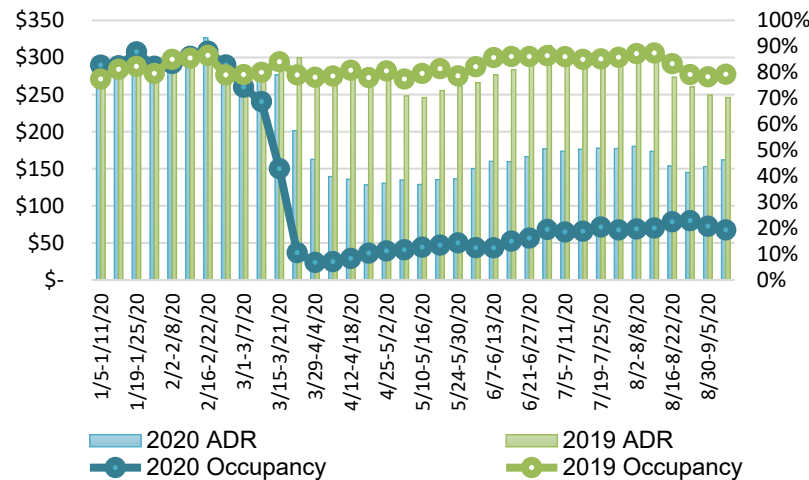
	2020	2019	Volume Change	Percent Change
Honolulu	22,562	186,781	-164,219	-87.9%
Maui County	2,345	89,548	-87,203	-97.4%
Island of Hawai'i	2,254	31,063	-28,809	-92.7%
Kaua'i	564	29,189	-28,625	-98.1%
Total	27,725	336,581	-308,856	-91.8%

2020 (Year-to-Date through September 17)

	2020	2019	Volume Change	Percent Change
Honolulu	1,148,798	3,330,645	-2,181,847	-65.5%
Maui County	455,921	1,625,372	-1,169,452	-71.9%
Island of Hawai'i	228,034	728,588	-500,554	-68.7%
Kaua'i	151,682	555,926	-404,244	-72.7%
Total	1,984,434	6,240,531	-4,256,097	-68.2%

Source: HVCB analysis based on data from DBEDT
Note: Passenger volume figures include both visitors and residents. Total includes other international passengers. 2020 includes one additional day due to Leap Year (February 29th, 2020).

State of Hawai'i Hotel Performance by Week - 2020 vs 2019



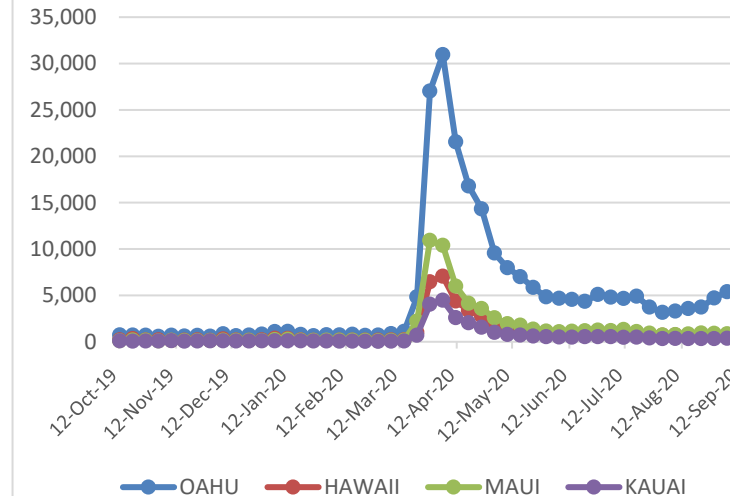
Source: STR, Inc. © Copyright 2020 Hawai'i Tourism Authority

Hawaii Hotel Performance Info:

For the week of September 6 – September 12, 2020

	Occupancy	ADR	RevPAR
State of Hawaii	19.3%	\$ 161.81	\$ 31.16
Oahu	21.1%	\$ 159.44	\$ 33.64
Maui County	17.3%	\$ 189.80	\$ 32.74
Kauai County	14.8%	\$ 149.74	\$ 22.13
Island of Hawaii	19.1%	\$ 130.76	\$ 24.94

2020 Initial Weekly Unemployment Claims by Island



Weekly Unemployment Initial Claims: September 12, 2020

State of Hawaii	7,338
C&C of Oahu	5,373
Hawaii County	727
Maui County	771
Kauai County	319
Agent (filed in Hawaii against another state)	148

News Highlights

September 18, 2020

KHON2: [Economist says little room for errors when tourism reopens Oct. 15](#)

KHON2: [Neighbor island mayors say more details needed before pre-testing program begins](#)

KITV4: [Plans for interisland travel unclear as state poised to welcome back visitors](#)

Honolulu Star-Advertiser: [Letters: Lockdown decisions based on faulty analysis; Force Ko Olina to open lagoon parking lots; Makes sense to stop rail just before Chinatown](#)

Maui Now: [Maui Businesses Continue to Close and Struggle as Pandemic Drags On](#)

Thrillist: [Hawaii Will Let COVID-Negative Visitors Skip Mandatory Quarantine Starting in October](#)

The Washington Post: [Live updates: Three-quarters of Americans worry about vaccine haste, as global coronavirus cases top 30 million](#)

CNN: [Hawaii tentatively reopening to tourists October 15](#)

Helpful Resources

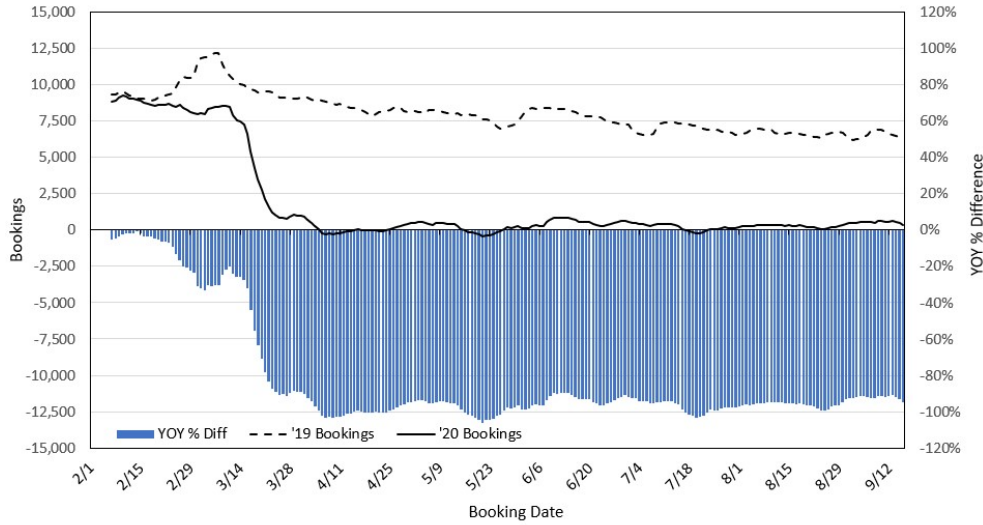
Department of Health
<https://hawaiiocovid19.com/>

Department of Health
<https://health.hawaii.gov/docd/advisories/novel-coronavirus-2019>

Dept. of Business, Economic Development & Tourism
<https://dbedt.hawaii.gov/economic/covid19/>

Department of Transportation
<https://hidot.hawaii.gov/coronavirus/>

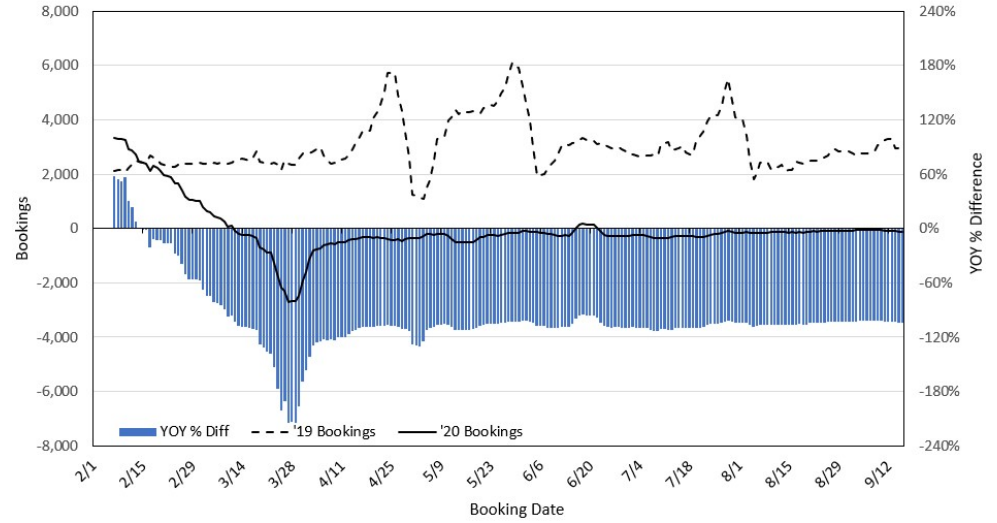
**Travel Agency Bookings to Hawaii for Future Arrivals*
Based on a 7-day Moving Average, 2020 vs 2019
U.S.**



*Future Arrivals refers to all arrivals that are 'future' relative to the referenced booking date.
Source: Global Agency Pro

Update: Sep 16, 2020

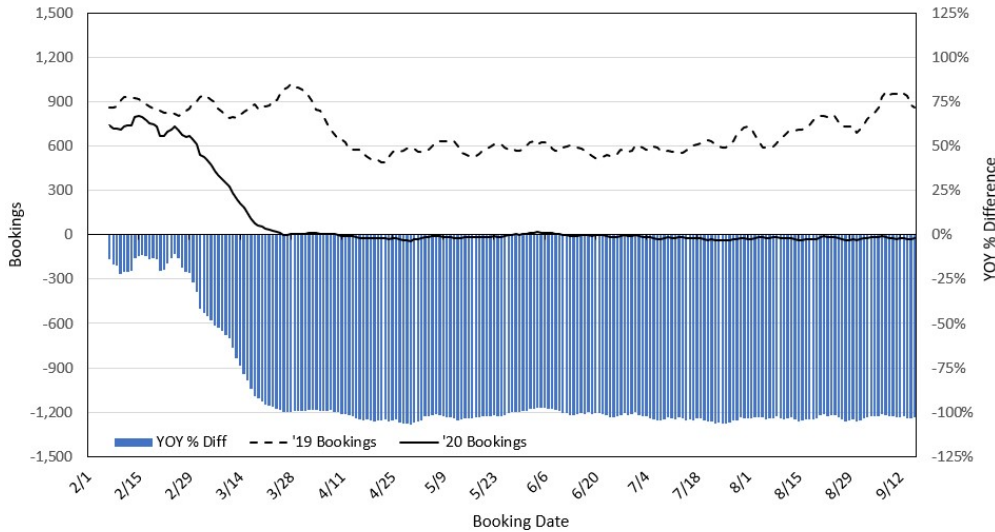
**Travel Agency Bookings to Hawaii for Future Arrivals*
Based on a 7-day Moving Average, 2020 vs 2019
Japan**



*Future Arrivals refers to all arrivals that are 'future' relative to the referenced booking date.
Source: Global Agency Pro

Update: Sep 16, 2020

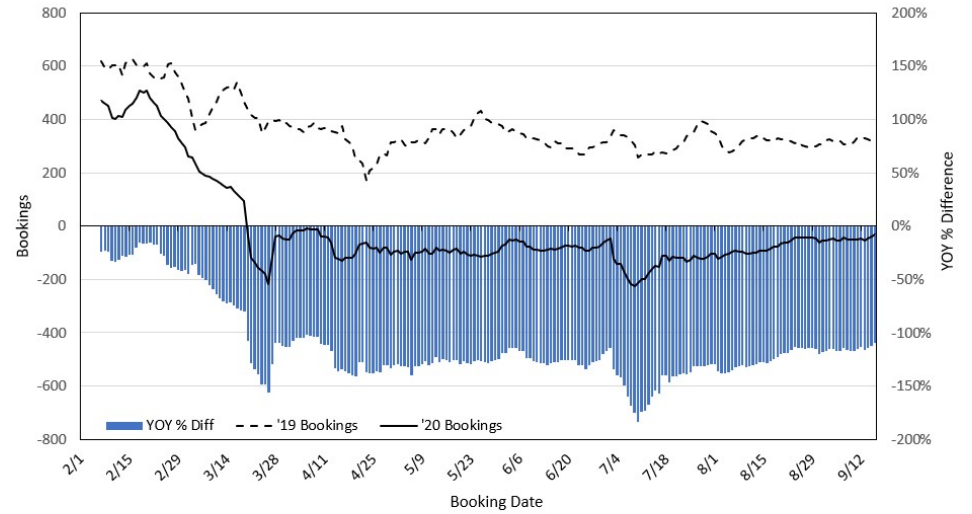
**Travel Agency Bookings to Hawaii for Future Arrivals*
Based on a 7-day Moving Average, 2020 vs 2019
Canada**



*Future Arrivals refers to all arrivals that are 'future' relative to the referenced booking date.
Source: Global Agency Pro

Update: Sep 16, 2020

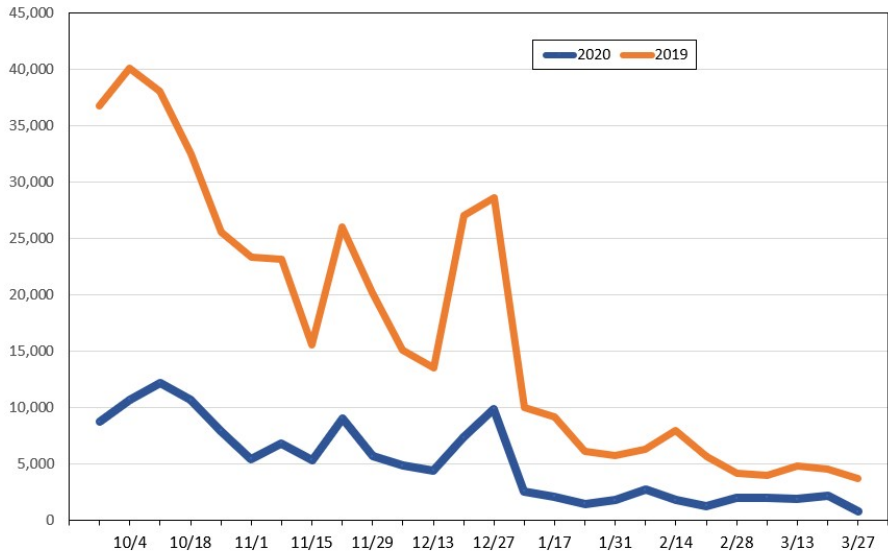
**Travel Agency Bookings to Hawaii for Future Arrivals*
Based on a 7-day Moving Average, 2020 vs 2019
Australia**



*Future Arrivals refers to all arrivals that are 'future' relative to the referenced booking date.
Source: Global Agency Pro

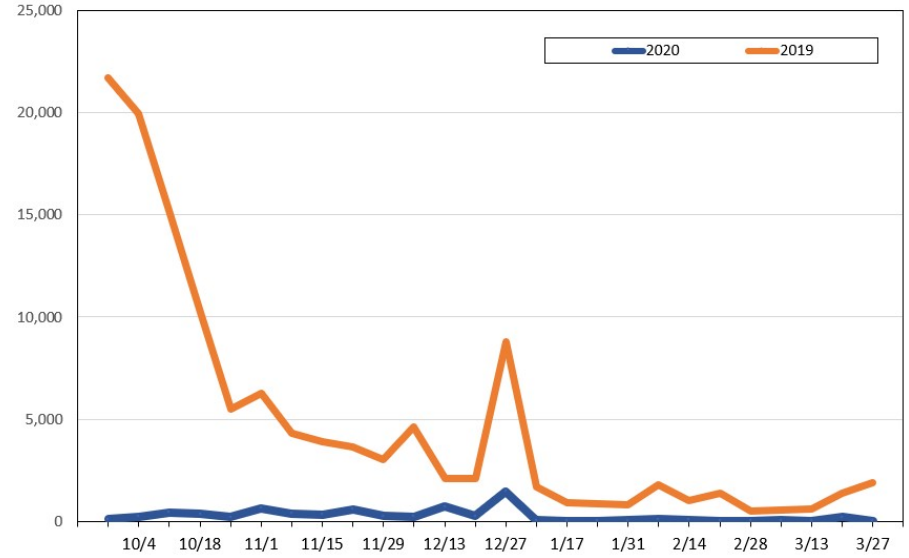
Update: Sep 16, 2020

Travel Agency Weekly Bookings for Future Travel to Hawai'i as of September 16, 2020
U.S.



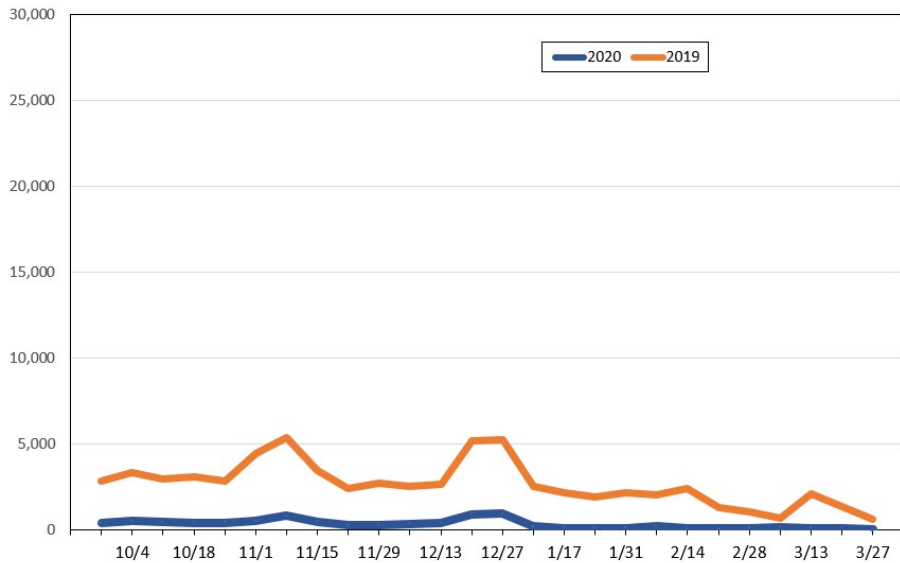
Source: Global Agency Pro, as of September 16, 2020

Travel Agency Weekly Bookings for Future Travel to Hawai'i as of September 16, 2020
Japan



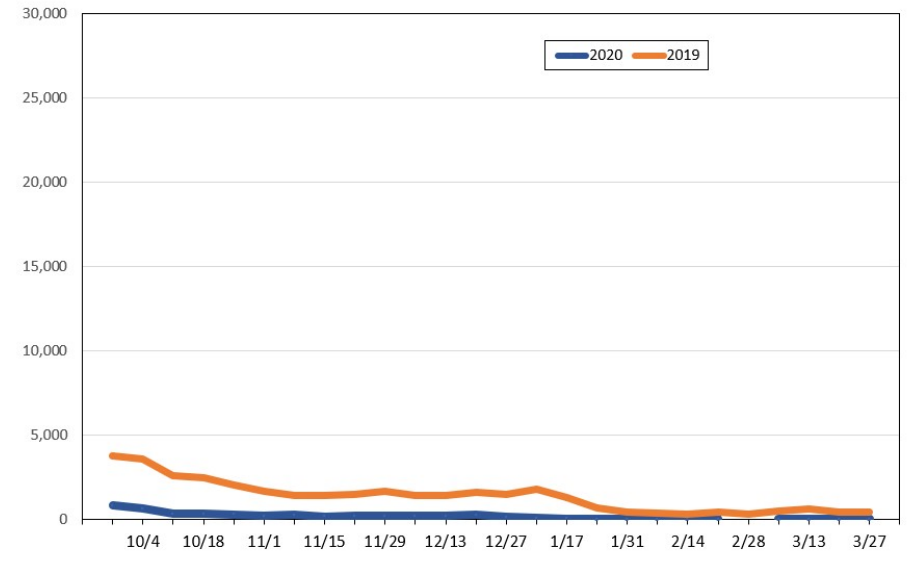
Source: Global Agency Pro, as of September 16, 2020

Travel Agency Weekly Bookings for Future Travel to Hawai'i as of September 16, 2020
Canada



Source: Global Agency Pro, as of September 16, 2020

Travel Agency Weekly Bookings for Future Travel to Hawai'i as of September 16, 2020
Australia



Source: Global Agency Pro, as of September 16, 2020