

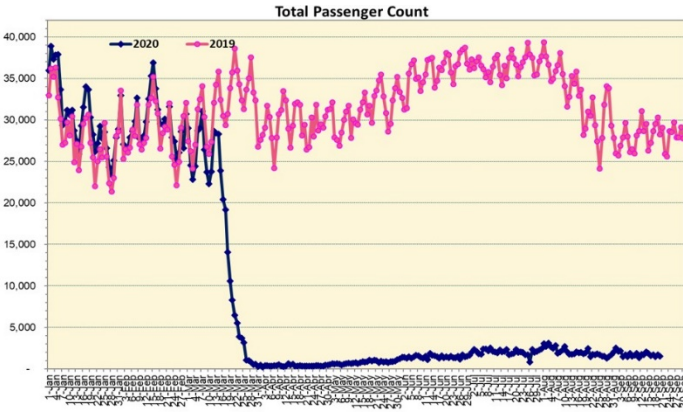
HTA COVID-19 UPDATE

(Issued: 9/21/20 @ 3:30pm)

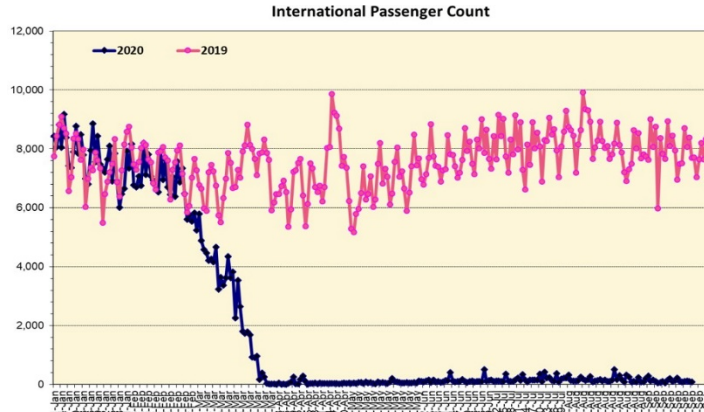
Novel Coronavirus in Hawaii

COVID-19 Positive* Cases

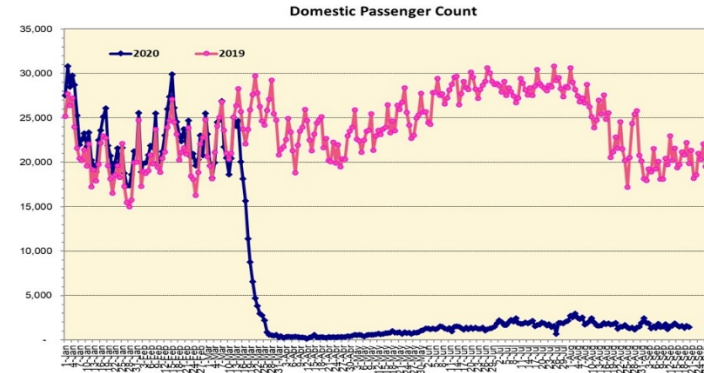
Cumulative totals as of 12:00 noon on September 21, 2020



Note: Excludes flights from Canada



Note: Excludes flights from Canada



Daily Passenger Count Table

0920/2020	Domestic	International	Total
Oahu	1187	102	1289
Maui	125		125
Island of Hawaii	108		108
Kauai	22		22
State	1442	102	1544

Market Impact Update: <https://www.dropbox.com/09/21/20 HTA COVID19 Update>

09/20/20 Hawaii Passenger Trans-Pacific Arrivals by Air	Honolulu (HNL)	Kahului (OGG)	Kona (KOA)	Lihue (LIH)	Grand Total
Airline Crew	211	23	16	8	258
Essential Worker	110	30	27	2	169
Honeymoon	0	0	0	1	1
Intended Resident	62	17	11	3	93
Military or Federal Government	135	3	1	2	141
Other	121	6	4	2	133
Other Business	54	16	10	2	82
Pleasure/Vacation	29	11	20	1	61
Returning Resident	492	57	55	17	621
Sports Event	0	1	0	0	1
To Attend School	17	1	0	0	18
Visiting Friends or Relatives	148	25	30	7	210
Transit	N/A	N/A	N/A	N/A	N/A
Grand Total	1,379	190	174	45	1,788

Source: Safe Travels program developed by the State of Hawaii Office of Enterprise Technology Services

Note: The data is preliminary and subject to change

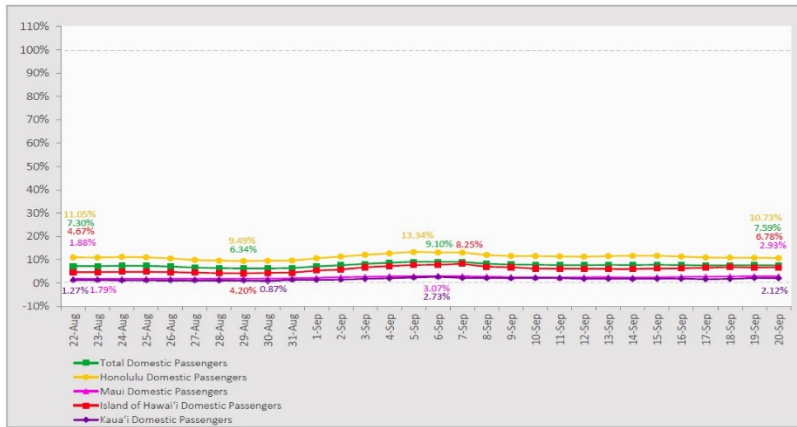
Statewide	Total
Total Cases	11,459 (56 new)
Released from Isolation+	4,888
Required Hospitalization	735
Deaths	120
BY COUNTY	Total
Hawaii County	
Total Cases	651
Released from Isolation+	460
Required Hospitalization	34
Deaths	15
Honolulu County	
Total Cases	10,338
Released from Isolation+	4,113
Required Hospitalization	650
Deaths	95
Kauai County	
Total Cases	57
Released from Isolation+	56
Required Hospitalization	1
Deaths	0
Maui County	
Total Cases	385
Released from Isolation+	259
Required Hospitalization	48
Deaths	9
HI Residents diagnosed outside of HI	28
County Pending	0

*includes presumptive and confirmed cases, data are preliminary and subject to change; note that CDC provides case counts according to states of residence.

+Isolation should be maintained until at least 3 days (72 hours) after resolution of fever and myalgia without the use of antipyretics OR at least 7 days have passed since symptom onset, whichever is longer.

7-Day Domestic by Island Moving Average Daily Passenger Volume

2020 Volume as Percentage of 2019 Volume
Through September 20, 2020



Source: HVCB analysis based on data from DBEDT
Note: Passenger volume figures include both visitors and residents.

Domestic by Island Month-to-Date and Year-to-Date Daily Passenger Volume

2020 Volume versus 2019 Volume
Through September 20, 2020

September 2020 (Month-to-Date through September 20)

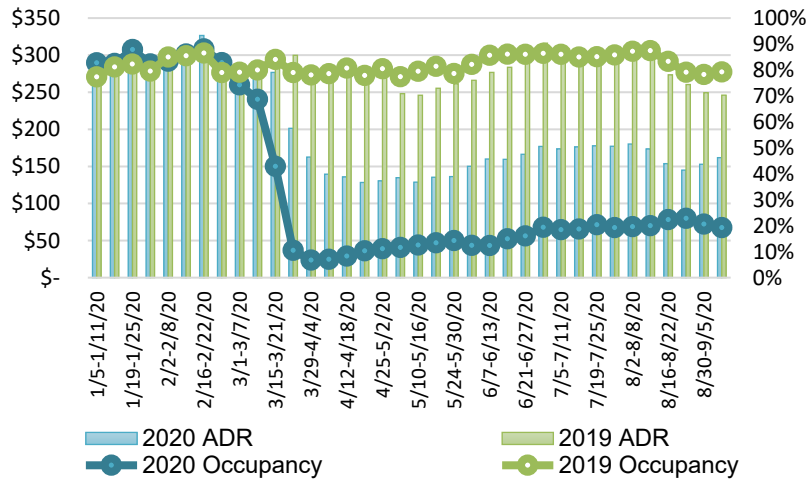
	2020	2019	Volume Change	Percent Change
Honolulu	25,967	221,447	-195,480	-88.3%
Maui County	2,982	105,708	-102,726	-97.2%
Island of Hawai'i	2,605	36,709	-34,104	-92.9%
Kaua'i	710	34,424	-33,714	-97.9%
Total	32,264	398,288	-366,024	-91.9%

2020 (Year-to-Date through September 20)

	2020	2019	Volume Change	Percent Change
Honolulu	1,152,203	3,365,311	-2,213,108	-65.8%
Maui County	456,558	1,641,532	-1,184,974	-72.2%
Island of Hawai'i	228,385	734,234	-505,849	-68.9%
Kaua'i	151,828	561,161	-409,333	-72.9%
Total	1,988,974	6,302,238	-4,313,265	-68.4%

Source: HVCB analysis based on data from DBEDT
Note: Passenger volume figures include both visitors and residents. Total includes other international passengers. 2020 includes one additional day due to Leap Year (February 29th, 2020).

State of Hawai'i Hotel Performance by Week - 2020 vs 2019



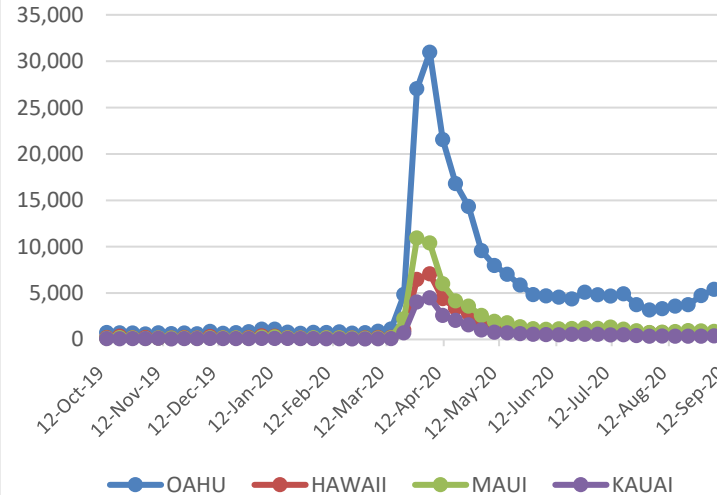
Source: STR, Inc. © Copyright 2020 Hawai'i Tourism Authority

Hawaii Hotel Performance Info:

For the week of September 6 – September 12, 2020

	Occupancy	ADR	RevPAR
State of Hawaii	19.3%	\$ 161.81	\$ 31.16
Oahu	21.1%	\$ 159.44	\$ 33.64
Maui County	17.3%	\$ 189.80	\$ 32.74
Kauai County	14.8%	\$ 149.74	\$ 22.13
Island of Hawaii	19.1%	\$ 130.76	\$ 24.94

2020 Initial Weekly Unemployment Claims by Island



Weekly Unemployment Initial Claims: September 12, 2020

State of Hawaii	7,338
C&C of Oahu	5,373
Hawaii County	727
Maui County	771
Kauai County	319
Agent (filed in Hawaii against another state)	148

News Highlights

September 21, 2020

Honolulu Star-Advertiser: [Details remain vague on Hawaii's October pre-arrival testing program](#)

Honolulu Star-Advertiser: [Kokua Line: Readers seek clarity about Hawaii's pre-travel test regimen](#)

Honolulu Star-Advertiser: [Letters: Hawaii can lead world in tourism; Voting not enough to make real change; Veto of funding for Fernhurst a joke](#)

KHON2: [Some hotels plan to reopen Oct. 15, others will remain closed](#)

KHON2: [State agents are knocking on hotel doors, verifying that visitors are following quarantine orders](#)

Honolulu Civil Beat: [2 Kauai Resorts Still Plan A 'Tiny Bubbles' Program For Some Visitors](#)

Pacific Business News: [Hawaii hotels continue to see sharp declines in key metrics amid Covid-19](#)

The Maui News: [Mayor: Maui in 'good place' for pre-travel testing](#)

The Maui News: [Partnerships help community weather COVID-19 storm](#)

Helpful Resources

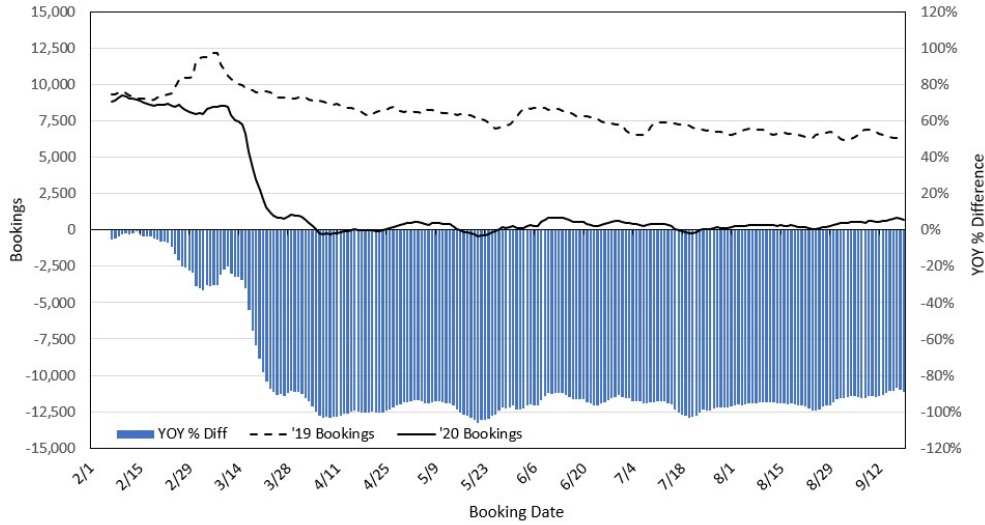
Department of Health
<https://hawaiiocovid19.com/>

Department of Health
<https://health.hawaii.gov/docd/advisories/novel-coronavirus-2019>

Dept. of Business, Economic Development & Tourism
<https://dbedt.hawaii.gov/economic/covid19/>

Department of Transportation
<https://hidot.hawaii.gov/coronavirus/>

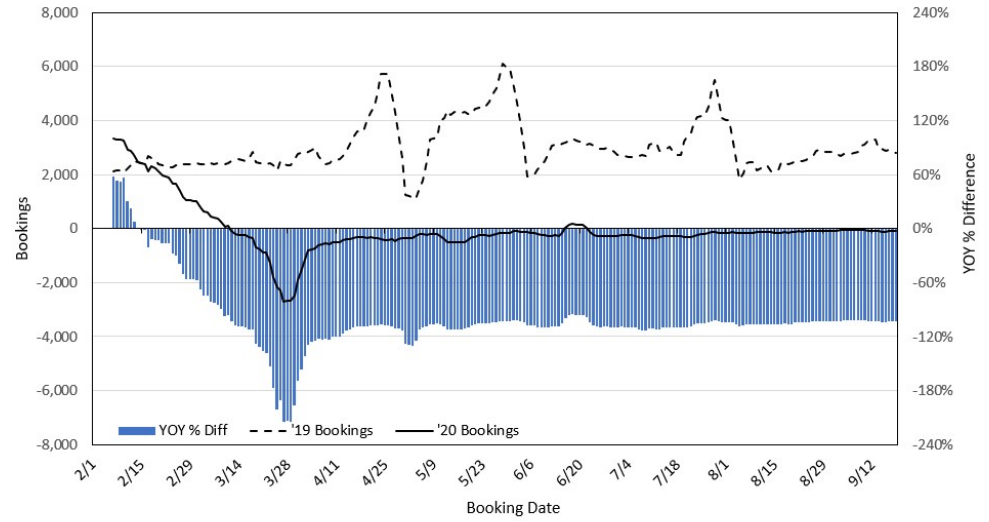
Travel Agency Bookings to Hawaii for Future Arrivals*
Based on a 7-day Moving Average, 2020 vs 2019
U.S.



*Future Arrivals refers to all arrivals that are 'future' relative to the referenced booking date.
 Source: Global Agency Pro

Update: Sep 19, 2020

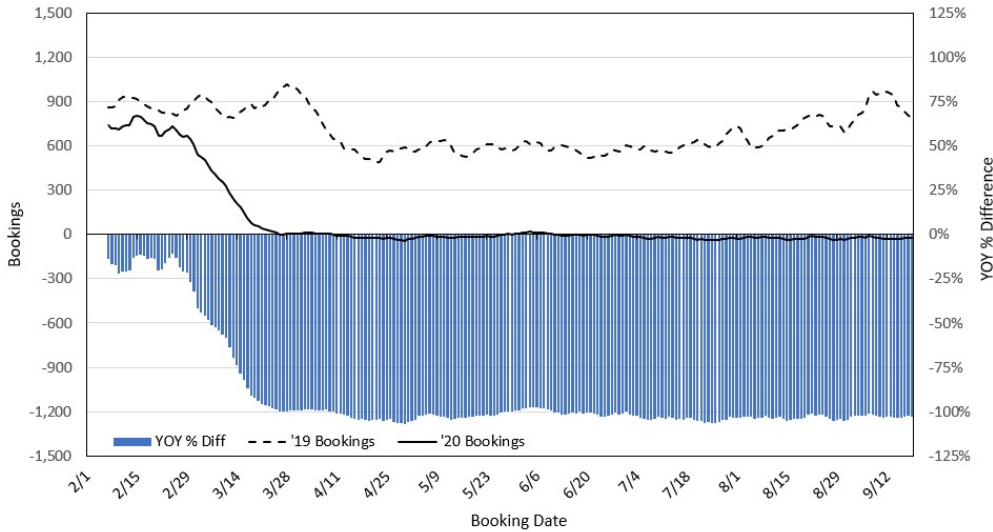
Travel Agency Bookings to Hawaii for Future Arrivals*
Based on a 7-day Moving Average, 2020 vs 2019
Japan



*Future Arrivals refers to all arrivals that are 'future' relative to the referenced booking date.
 Source: Global Agency Pro

Update: Sep 19, 2020

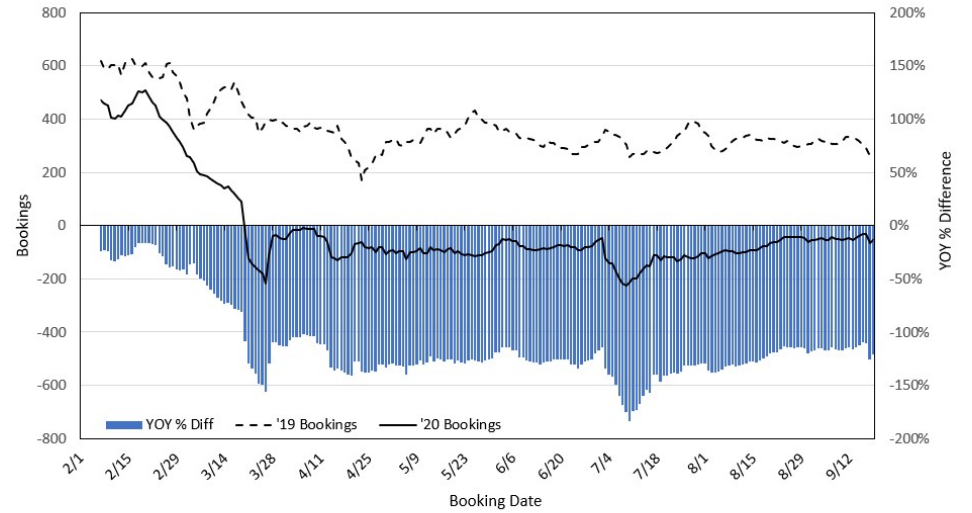
Travel Agency Bookings to Hawaii for Future Arrivals*
Based on a 7-day Moving Average, 2020 vs 2019
Canada



*Future Arrivals refers to all arrivals that are 'future' relative to the referenced booking date.
 Source: Global Agency Pro

Update: Sep 19, 2020

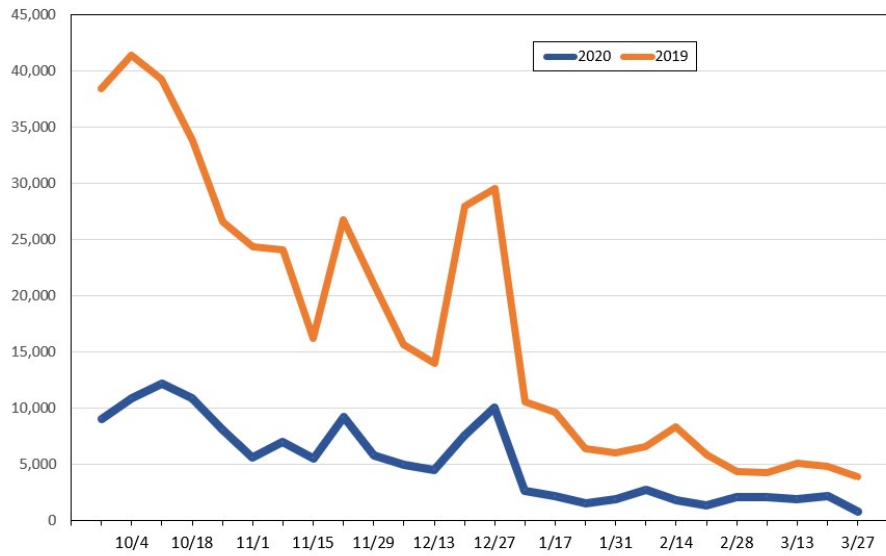
Travel Agency Bookings to Hawaii for Future Arrivals*
Based on a 7-day Moving Average, 2020 vs 2019
Australia



*Future Arrivals refers to all arrivals that are 'future' relative to the referenced booking date.
 Source: Global Agency Pro

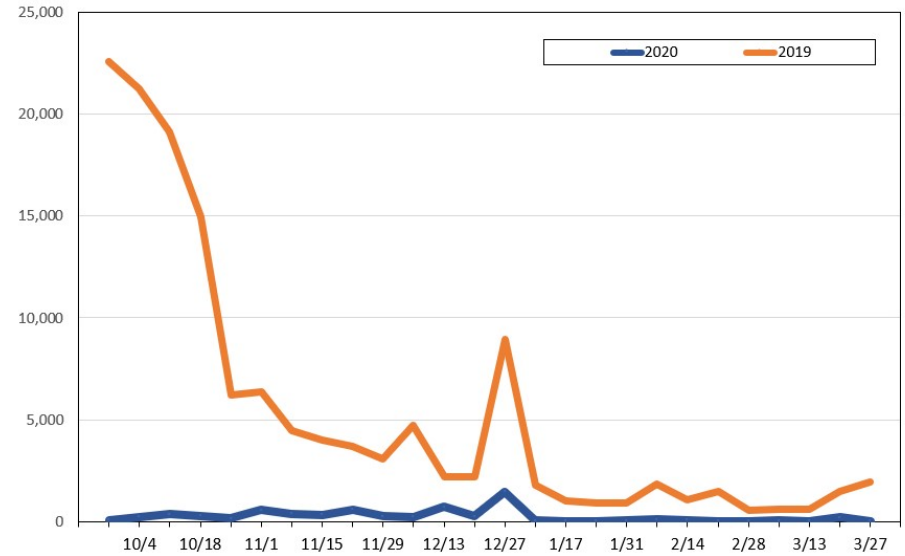
Update: Sep 19, 2020

Travel Agency Weekly Bookings for Future Travel to Hawai'i as of September 19, 2020
U.S.



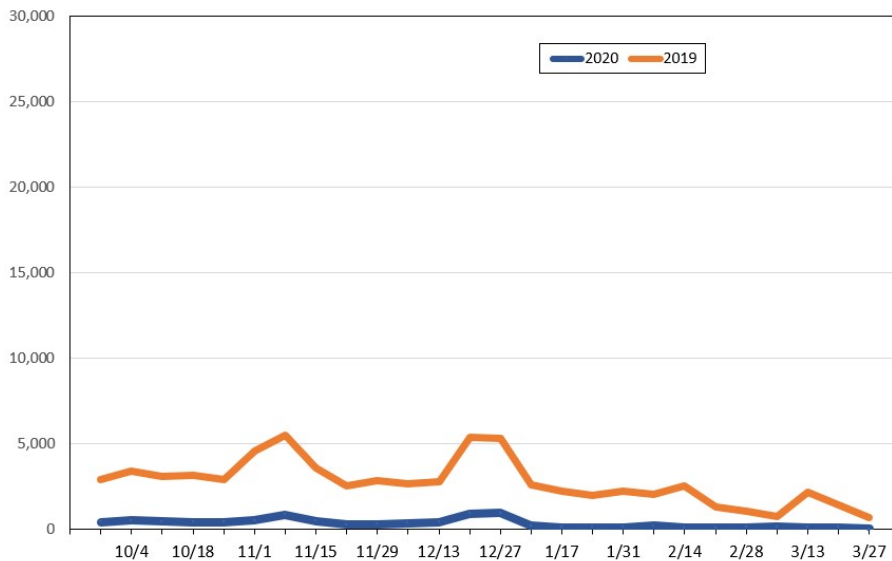
Source: Global Agency Pro, as of September 19, 2020

Travel Agency Weekly Bookings for Future Travel to Hawai'i as of September 19, 2020
Japan



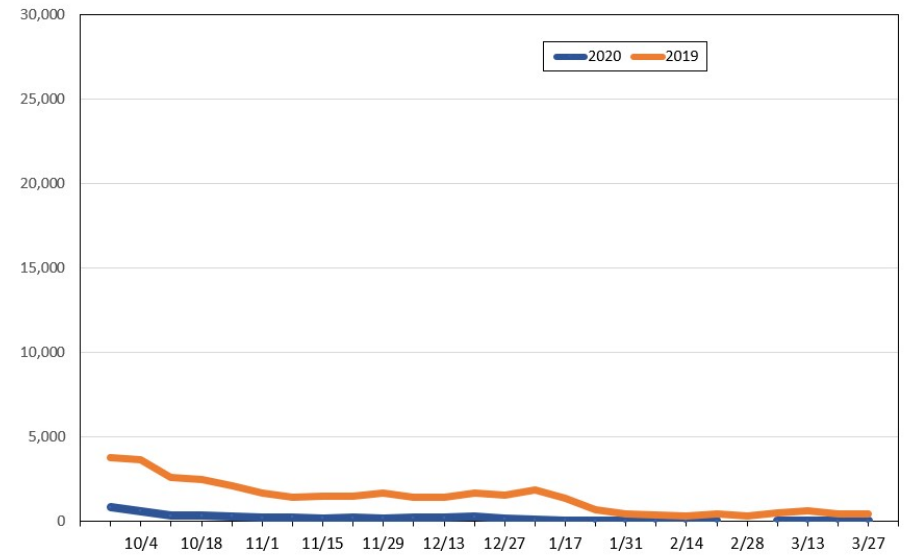
Source: Global Agency Pro, as of September 19, 2020

Travel Agency Weekly Bookings for Future Travel to Hawai'i as of September 19, 2020
Canada



Source: Global Agency Pro, as of September 19, 2020

Travel Agency Weekly Bookings for Future Travel to Hawai'i as of September 19, 2020
Australia



Source: Global Agency Pro, as of September 19, 2020