

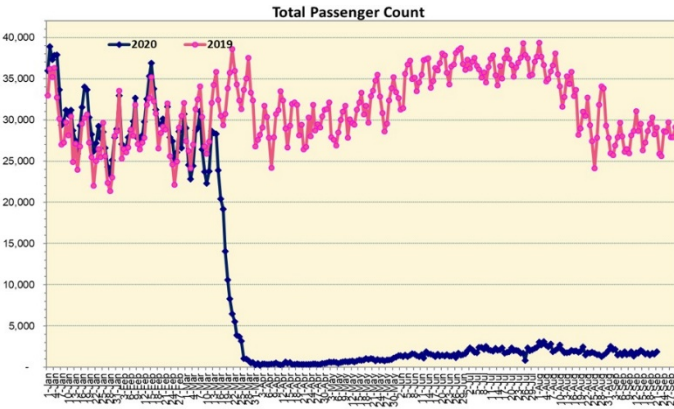
HTA COVID-19 UPDATE

(Issued: 9/22/20 @ 4:00pm)

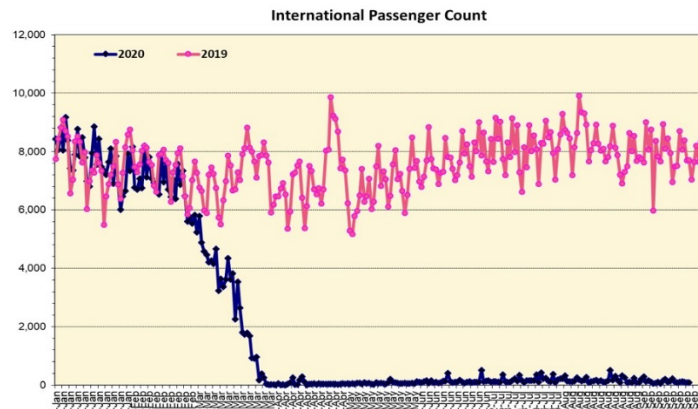
Novel Coronavirus in Hawaii

COVID-19 Positive* Cases

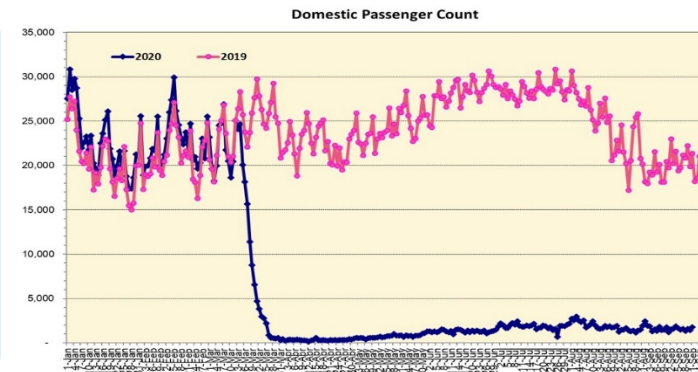
Cumulative totals as of 12:00 noon on September 22, 2020



Note: Excludes flights from Canada



Note: Excludes flights from Canada



Daily Passenger Count Table

| 09/21/2020 | Domestic | International | Total |
|------------------|----------|---------------|-------|
| Oahu | 1410 | 97 | 1507 |
| Maui | 164 | | 164 |
| Island of Hawaii | 150 | | 150 |
| Kauai | 68 | | 68 |
| State | 1792 | 97 | 1889 |

Market Impact Update: <https://www.dropbox.com/09/22/20 HTA COVID19 Update>

| 09/21/20 Hawaii Passenger Trans-Pacific Arrivals by Air | Honolulu (HNL) | Kahului (OGG) | Kona (KOA) | Lihue (LIH) | Grand Total |
|---|----------------|---------------|------------|-------------|--------------|
| Airline Crew | 203 | 26 | 17 | 6 | 252 |
| Essential Worker | 135 | 49 | 23 | 5 | 212 |
| Honeymoon | 2 | 0 | 0 | 0 | 2 |
| Intended Resident | 94 | 10 | 35 | 8 | 147 |
| Military or Federal Government | 162 | 0 | 0 | 0 | 162 |
| Other | 140 | 14 | 3 | 1 | 158 |
| Other Business | 69 | 19 | 7 | 2 | 97 |
| Pleasure/Vacation | 48 | 5 | 18 | 4 | 75 |
| Returning Resident | 506 | 80 | 75 | 31 | 692 |
| To Attend School | 15 | 0 | 0 | 0 | 15 |
| Visiting Friends or Relatives | 168 | 41 | 31 | 14 | 254 |
| Transit | N/A | N/A | N/A | N/A | N/A |
| Grand Total | 1,542 | 244 | 209 | 71 | 2,066 |

Source: Safe Travels program developed by the State of Hawaii Office of Enterprise Technology Services

Note: The data is preliminary and subject to change

| Statewide | Total |
|--------------------------------------|-----------------|
| Total Cases | 11,522 (63 new) |
| Released from Isolation+ | 4,992 |
| Required Hospitalization | 749 |
| Deaths | 120 |
| BY COUNTY | Total |
| Hawaii County | |
| Total Cases | 659 |
| Released from Isolation+ | 474 |
| Required Hospitalization | 35 |
| Deaths | 15 |
| Honolulu County | |
| Total Cases | 10,393 |
| Released from Isolation+ | 4,197 |
| Required Hospitalization | 663 |
| Deaths | 95 |
| Kauai County | |
| Total Cases | 57 |
| Released from Isolation+ | 56 |
| Required Hospitalization | 1 |
| Deaths | 0 |
| Maui County | |
| Total Cases | 385 |
| Released from Isolation+ | 265 |
| Required Hospitalization | 48 |
| Deaths | 9 |
| HI Residents diagnosed outside of HI | 28 |
| County Pending | 0 |

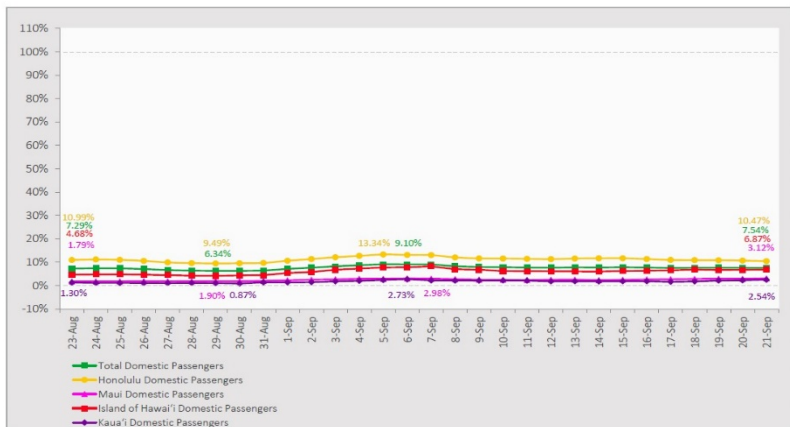
*includes presumptive and confirmed cases, data are preliminary and subject to change; note that CDC provides case counts according to states of residence.

+Isolation should be maintained until at least 3 days (72 hours) after resolution of fever and myalgia without the use of antipyretics OR at least 7 days have passed since symptom onset, whichever is longer.

7-Day Domestic by Island Moving Average Daily Passenger Volume

2020 Volume as Percentage of 2019 Volume

Through September 21, 2020



Source: HVCB analysis based on data from DBEDT
Note: Passenger volume figures include both visitors and residents.

Domestic by Island Month-to-Date and Year-to-Date Daily Passenger Volume

2020 Volume versus 2019 Volume

Through September 21, 2020

September 2120 (Month-to-Date through September 21)

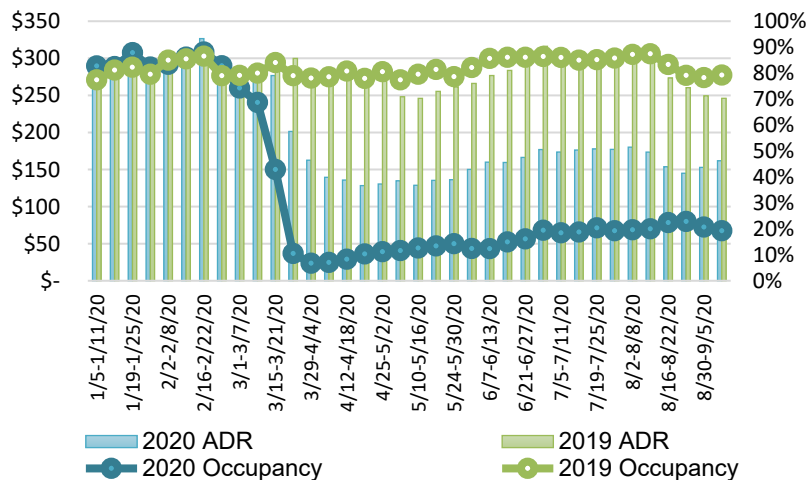
| | 2020 | 2019 | Volume Change | Percent Change |
|-------------------|--------|---------|---------------|----------------|
| Honolulu | 27,377 | 233,357 | -205,980 | -88.3% |
| Maui County | 3,146 | 111,823 | -108,677 | -97.2% |
| Island of Hawai'i | 2,755 | 39,110 | -36,355 | -93.0% |
| Kaua'i | 800 | 36,232 | -35,432 | -97.8% |
| Total | 34,078 | 420,522 | -386,444 | -91.9% |

2020 (Year-to-Date through September 21)

| | 2020 | 2019 | Volume Change | Percent Change |
|-------------------|-----------|-----------|---------------|----------------|
| Honolulu | 1,153,613 | 3,377,221 | -2,223,608 | -65.8% |
| Maui County | 456,722 | 1,647,647 | -1,190,926 | -72.3% |
| Island of Hawai'i | 228,535 | 736,635 | -508,100 | -69.0% |
| Kaua'i | 151,918 | 562,969 | -411,051 | -73.0% |
| Total | 1,990,787 | 6,324,472 | -4,333,685 | -68.5% |

Source: HVCB analysis based on data from DBEDT
Note: Passenger volume figures include both visitors and residents. Total includes other international passengers. 2020 includes one additional day due to Leap Year (February 29th, 2020).

State of Hawai'i Hotel Performance by Week - 2020 vs 2019



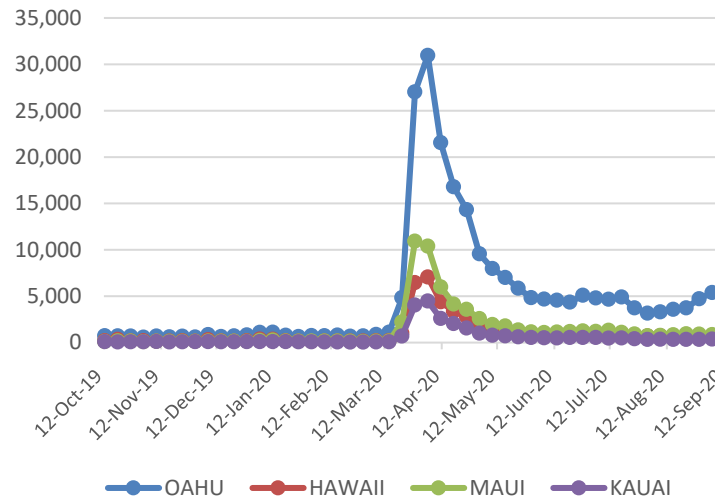
Source: STR, Inc. © Copyright 2020 Hawai'i Tourism Authority

Hawaii Hotel Performance Info:

For the week of September 6 – September 12, 2020

| | Occupancy | ADR | RevPAR |
|------------------|-----------|-----------|----------|
| State of Hawaii | 19.3% | \$ 161.81 | \$ 31.16 |
| Oahu | 21.1% | \$ 159.44 | \$ 33.64 |
| Maui County | 17.3% | \$ 189.80 | \$ 32.74 |
| Kauai County | 14.8% | \$ 149.74 | \$ 22.13 |
| Island of Hawaii | 19.1% | \$ 130.76 | \$ 24.94 |

2020 Initial Weekly Unemployment Claims by Island



Weekly Unemployment Initial Claims: September 12, 2020

| | |
|---|-------|
| State of Hawaii | 7,338 |
| C&C of Oahu | 5,373 |
| Hawaii County | 727 |
| Maui County | 771 |
| Kauai County | 319 |
| Agent (filed in Hawaii against another state) | 148 |

News Highlights

September 22, 2020

Hawaii News Now: [Businesses call on leaders to form clearer plans to revitalize the local economy](#)

KHON2: [Lt. Gov. Green discusses new partners for pre-travel testing program and lessons learned from having COVID-19](#)

Honolulu Civil Beat: [Fast, Frequent And Cheap COVID-19 Tests Hold Promise For Hawaii](#)

Honolulu Civil Beat: [Survey: Hawaii Residents Give State Low Marks For COVID Response](#)

Hawaii Public Radio: [The Latest: COVID-19 Cases Continue To Decline, Mass Testing At Prisons Continues](#)

Hawaii Tribune-Herald: [Isle businesses guarded about Oct. 15 reopening](#)

The Maui News: [Mayor: Interisland pre-travel test may be coming](#)

The Motley Fool: [Hawaiian Airlines: Relief May Finally Be on the Way](#)

Travel + Leisure: [This App Will Tell You Everything You Need to Know About Traveling in the Time of COVID-19](#)

Helpful Resources

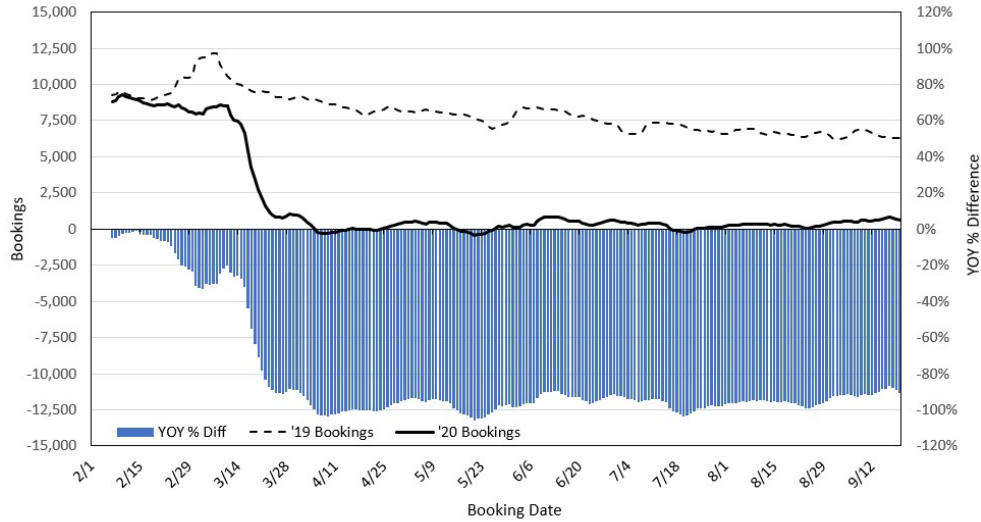
Department of Health
<https://hawaii-covid19.com/>

Department of Health
<https://health.hawaii.gov/docd/advisories/novel-coronavirus-2019>

Dept. of Business, Economic Development & Tourism
<https://dbedt.hawaii.gov/economic/covid19/>

Department of Transportation
<https://hidot.hawaii.gov/coronavirus/>

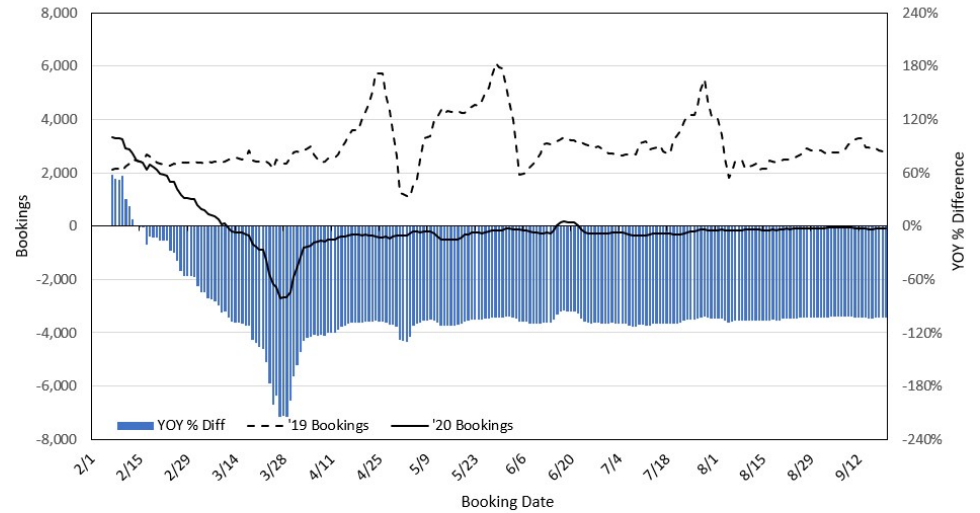
Travel Agency Bookings to Hawaii for Future Arrivals*
Based on a 7-day Moving Average, 2020 vs 2019
U.S.



*Future Arrivals refers to all arrivals that are 'future' relative to the referenced booking date.
 Source: Global Agency Pro

Update: Sep 20, 2020

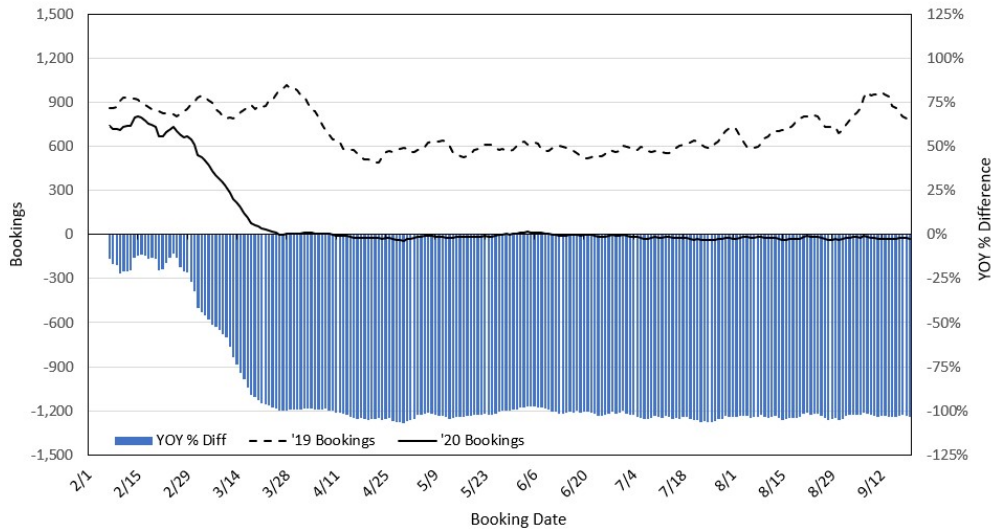
Travel Agency Bookings to Hawaii for Future Arrivals*
Based on a 7-day Moving Average, 2020 vs 2019
Japan



*Future Arrivals refers to all arrivals that are 'future' relative to the referenced booking date.
 Source: Global Agency Pro

Update: Sep 20, 2020

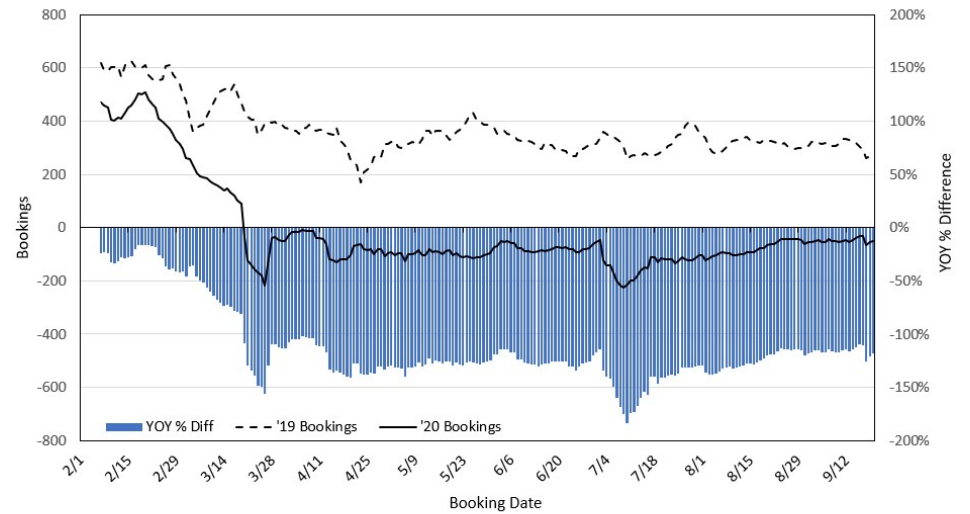
Travel Agency Bookings to Hawaii for Future Arrivals*
Based on a 7-day Moving Average, 2020 vs 2019
Canada



*Future Arrivals refers to all arrivals that are 'future' relative to the referenced booking date.
 Source: Global Agency Pro

Update: Sep 20, 2020

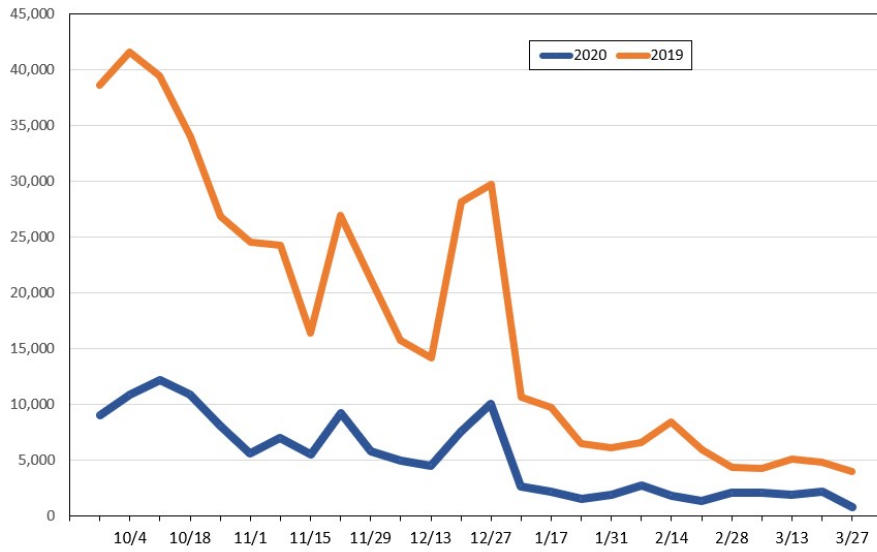
Travel Agency Bookings to Hawaii for Future Arrivals*
Based on a 7-day Moving Average, 2020 vs 2019
Australia



*Future Arrivals refers to all arrivals that are 'future' relative to the referenced booking date.
 Source: Global Agency Pro

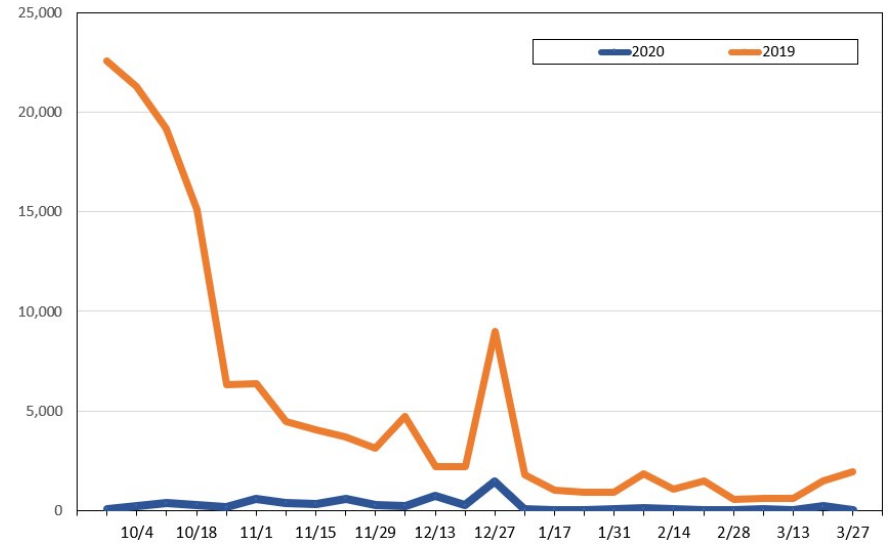
Update: Sep 20, 2020

Travel Agency Weekly Bookings for Future Travel to Hawai'i as of September 20, 2020
U.S.



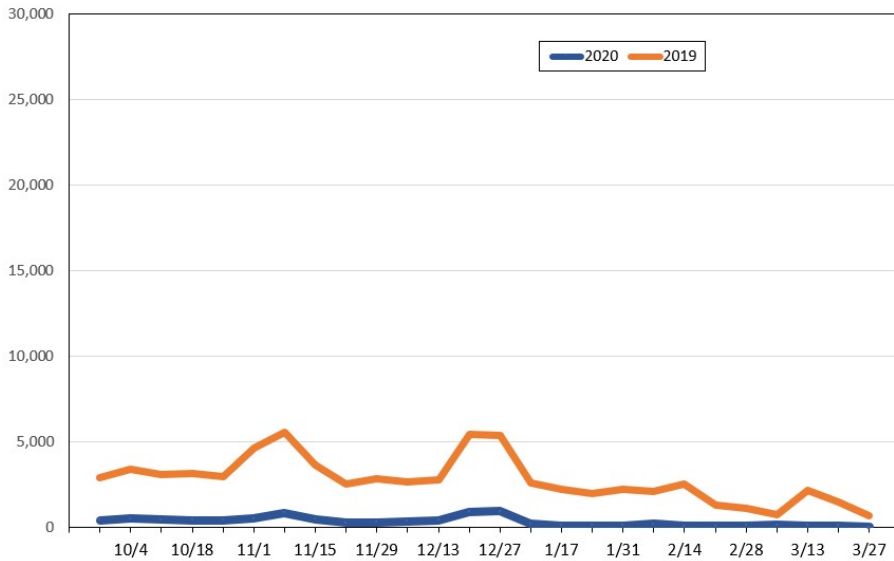
Source: Global Agency Pro, as of September 20, 2020

Travel Agency Weekly Bookings for Future Travel to Hawai'i as of September 20, 2020
Japan



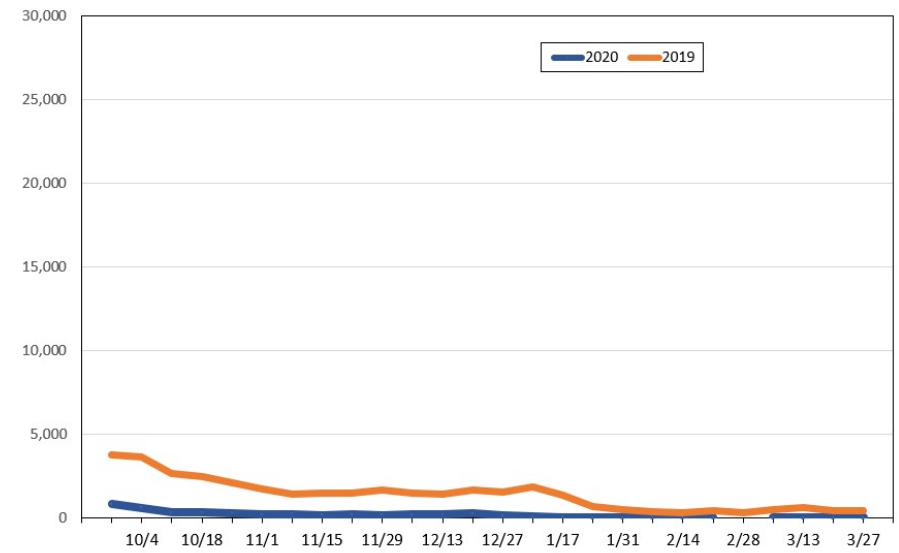
Source: Global Agency Pro, as of September 20, 2020

Travel Agency Weekly Bookings for Future Travel to Hawai'i as of September 20, 2020
Canada



Source: Global Agency Pro, as of September 20, 2020

Travel Agency Weekly Bookings for Future Travel to Hawai'i as of September 20, 2020
Australia



Source: Global Agency Pro, as of September 20, 2020