

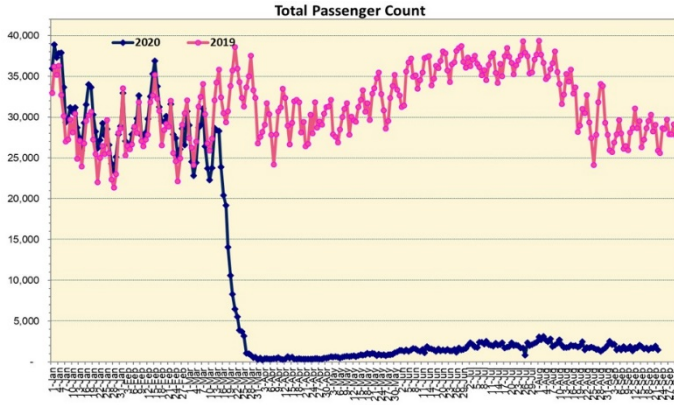
HTA COVID-19 UPDATE

(Issued: 9/23/20 @ 4:00pm)

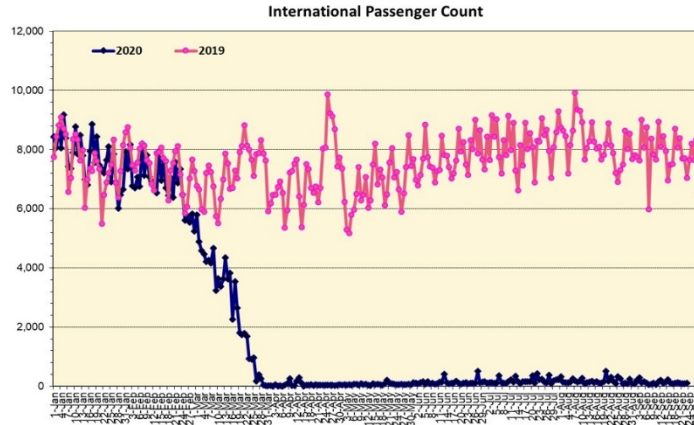
Novel Coronavirus in Hawaii

COVID-19 Positive* Cases

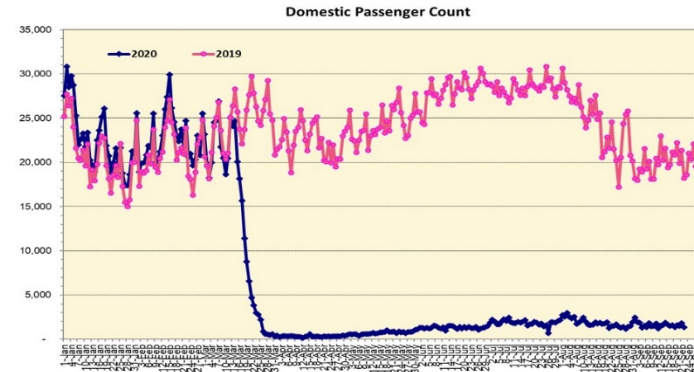
Cumulative totals as of 12:00 noon on September 23, 2020



Note: Excludes flights from Canada



Note: Excludes flights from Canada



Daily Passenger Count Table

09/22/2020	Domestic	International	Total
Oahu	1118	97	1215
Maui	144		144
Island of Hawaii	93		93
Kauai	0		0
State	1355	97	1452

Market Impact Update: <https://www.dropbox.com/09/23/20 HTA COVID19 Update>

09/22/20 Hawaii Passenger Trans-Pacific Arrivals by Air	Honolulu (HNL)	Kahului (OGG)	Kona (KOA)	Lihue (LIH)	Grand Total
Airline Crew	208	17	16	0	241
Essential Worker	73	12	12	1	98
Intended Resident	82	12	30	4	128
Military or Federal Government	121	0	0	1	122
Other	149	2	4	1	156
Other Business	76	5	11	5	97
Pleasure/Vacation	35	4	7	0	46
Returning Resident	380	39	52	7	478
To Attend School	5	2	2	0	9
Visiting Friends or Relatives	153	29	21	3	206
Transit	N/A	N/A	N/A	N/A	N/A
Grand Total	1,282	122	155	22	1,581

Source: Safe Travels program developed by the State of Hawaii Office of Enterprise Technology Services

Note: The data is preliminary and subject to change

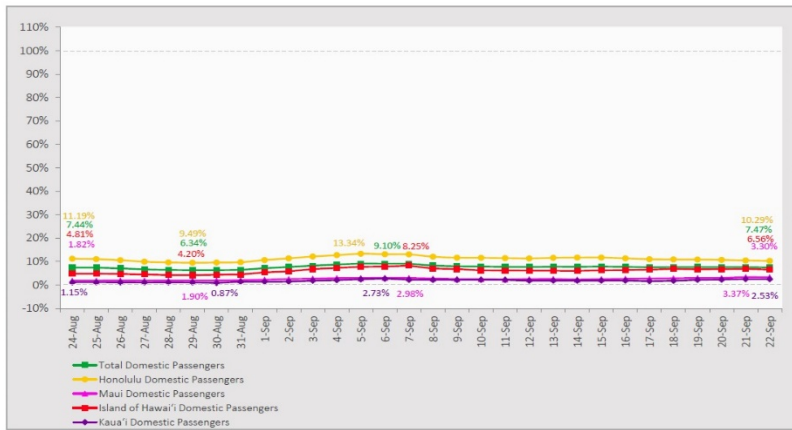
Statewide	Total
Total Cases	11,689 (168 new)
Released from Isolation+	5,125
Required Hospitalization	763
Deaths	122
BY COUNTY	Total
Hawaii County	
Total Cases	672
Released from Isolation+	482
Required Hospitalization	37
Deaths	15
Honolulu County	
Total Cases	10,546
Released from Isolation+	4,321
Required Hospitalization	675
Deaths	97
Kauai County	
Total Cases	57
Released from Isolation+	56
Required Hospitalization	1
Deaths	0
Maui County	
Total Cases	386
Released from Isolation+	266
Required Hospitalization	48
Deaths	9
HI Residents diagnosed outside of HI	28
County Pending	0

*includes presumptive and confirmed cases, data are preliminary and subject to change; note that CDC provides case counts according to states of residence.

+Isolation should be maintained until at least 3 days (72 hours) after resolution of fever and myalgia without the use of antipyretics OR at least 7 days have passed since symptom onset, whichever is longer.

7-Day Domestic by Island Moving Average Daily Passenger Volume

2020 Volume as Percentage of 2019 Volume
Through September 22, 2020



Source: HVCB analysis based on data from DBEDT
Note: Passenger volume figures include both visitors and residents.

Domestic by Island Month-to-Date and Year-to-Date Daily Passenger Volume

2020 Volume versus 2019 Volume
Through September 22, 2020

September 2020 (Month-to-Date through September 22)

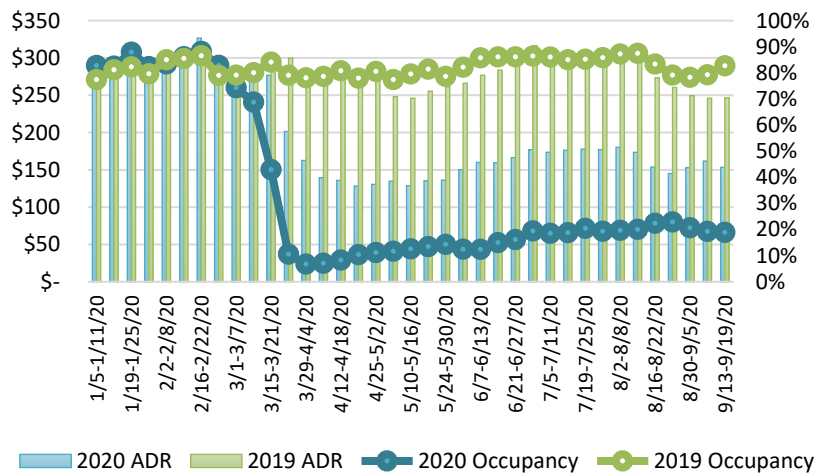
	2020	2019	Volume Change	Percent Change
Honolulu	28,495	244,843	-216,348	-88.4%
Maui County	3,386	116,851	-113,465	-97.1%
Island of Hawai'i	2,848	40,632	-37,784	-93.0%
Kaua'i	800	38,047	-37,247	-97.9%
Total	35,529	440,373	-404,844	-91.9%

2020 (Year-to-Date through September 22)

	2020	2019	Volume Change	Percent Change
Honolulu	1,154,731	3,388,707	-2,233,976	-65.9%
Maui County	456,962	1,652,675	-1,195,714	-72.4%
Island of Hawai'i	228,628	738,157	-509,529	-69.0%
Kaua'i	151,918	564,784	-412,866	-73.1%
Total	1,992,238	6,344,323	-4,352,085	-68.6%

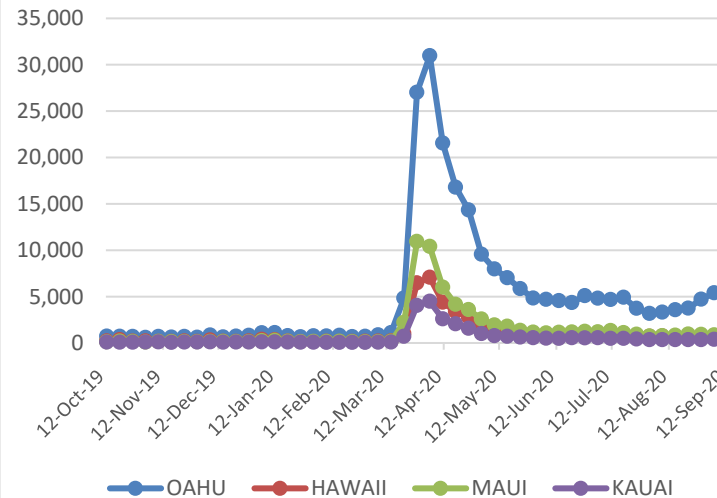
Source: HVCB analysis based on data from DBEDT
Note: Passenger volume figures include both visitors and residents. Total includes other international passengers. 2020 includes one additional day due to Leap Year (February 29th, 2020).

State of Hawai'i Hotel Performance by Week - 2020 vs 2019



Source: STR, Inc. © Copyright 2020 Hawai'i Tourism Authority

2020 Initial Weekly Unemployment Claims by Island



Weekly Unemployment Initial Claims: September 12, 2020

State of Hawaii	7,338
C&C of Oahu	5,373
Hawaii County	727
Maui County	771
Kauai County	319
Agent (filed in Hawaii against another state)	148

Hawaii Hotel Performance Info:

For the week of September 13 – September 19, 2020

	Occupancy	ADR	RevPAR
State of Hawaii	18.9%	\$ 153.41	\$ 28.95
Oahu	19.7%	\$ 156.36	\$ 30.87
Maui County	16.7%	\$ 161.05	\$ 26.86
Kauai County	14.8%	\$ 149.39	\$ 22.16
Island of Hawaii	22.3%	\$ 133.95	\$ 29.93

Helpful Resources

Department of Health
<https://hawaii-covid19.com/>

Department of Health
<https://health.hawaii.gov/docd/advisories/novel-coronavirus-2019>

Dept. of Business, Economic Development & Tourism
<https://dbedt.hawaii.gov/economic/covid19/>

Department of Transportation
<https://hidot.hawaii.gov/coronavirus/>

News Highlights

September 23, 2020

Honolulu Star Advertiser:

[Honolulu is taking steps to keep the COVID-19 case count low](#)

Honolulu Star Advertiser:

[Candy maker Hawaiian Host feels squeeze to pay off vendors' invoices](#)

KHON2: [Honolulu mayor makes exception for restaurant dine-in against health department recommendation](#)

Honolulu Civil Beat: [Hawaii Failed In Its Pandemic Response. It Has Another Chance To Get It Right](#)

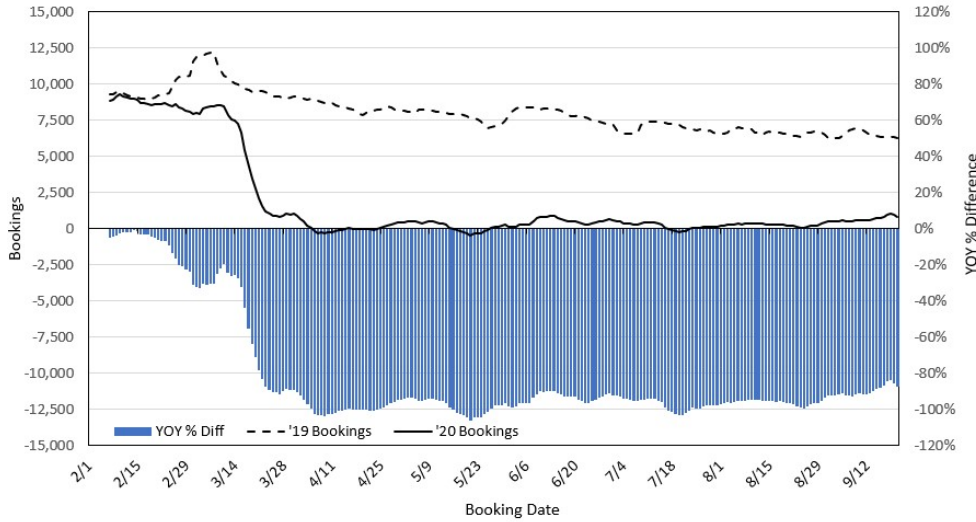
The Garden Island: [State launches displaced workers job program](#)

The Blonde Abroad: [The Best Places to Travel in the United States Right Now](#)

Travel Pulse: [Travelers Willing to Pay for COVID-19 Protections](#)

Forbes: [Here's What We Know—And Don't Know—About Hawaii's October 15th Reopening](#)

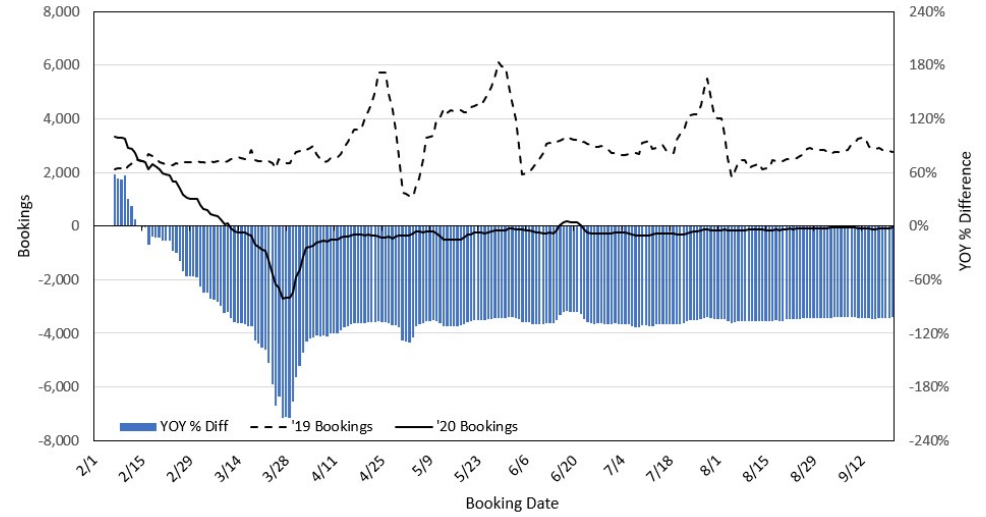
Travel Agency Bookings to Hawaii for Future Arrivals*
Based on a 7-day Moving Average, 2020 vs 2019
U.S.



*Future Arrivals refers to all arrivals that are 'future' relative to the referenced booking date.
 Source: Global Agency Pro

Update: Sep 21, 2020

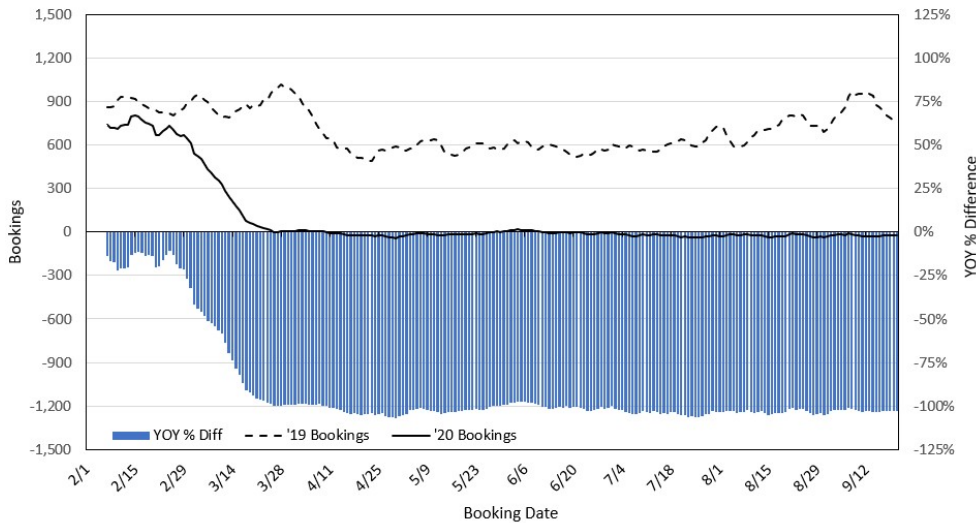
Travel Agency Bookings to Hawaii for Future Arrivals*
Based on a 7-day Moving Average, 2020 vs 2019
Japan



*Future Arrivals refers to all arrivals that are 'future' relative to the referenced booking date.
 Source: Global Agency Pro

Update: Sep 21, 2020

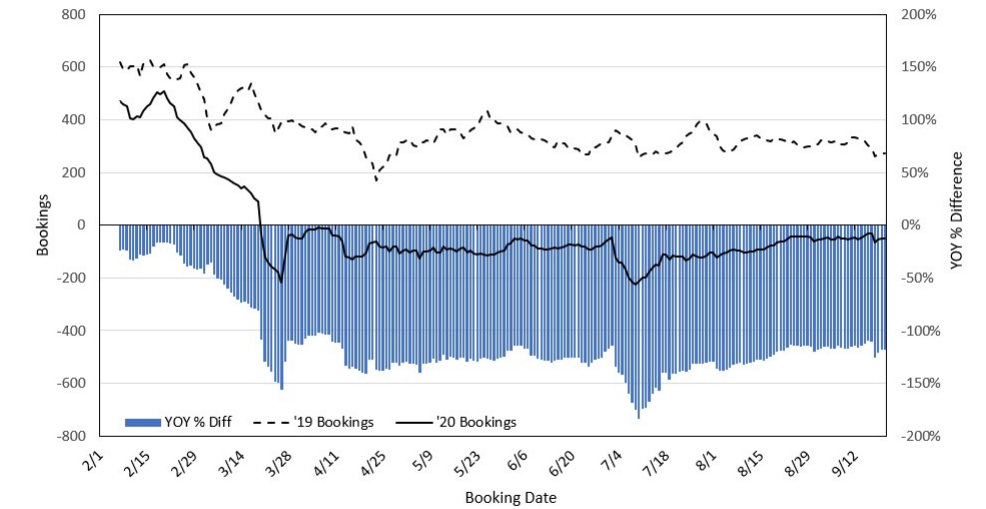
Travel Agency Bookings to Hawaii for Future Arrivals*
Based on a 7-day Moving Average, 2020 vs 2019
Canada



*Future Arrivals refers to all arrivals that are 'future' relative to the referenced booking date.
 Source: Global Agency Pro

Update: Sep 21, 2020

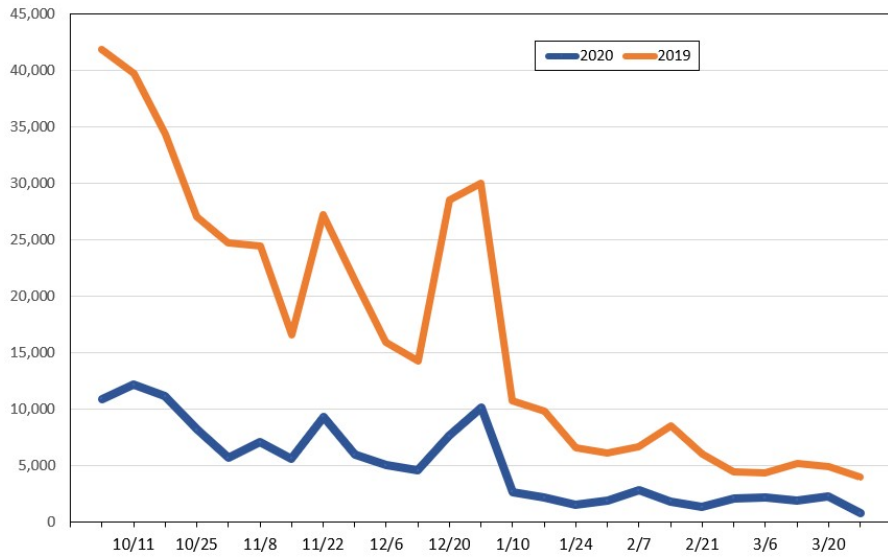
Travel Agency Bookings to Hawaii for Future Arrivals*
Based on a 7-day Moving Average, 2020 vs 2019
Australia



*Future Arrivals refers to all arrivals that are 'future' relative to the referenced booking date.
 Source: Global Agency Pro

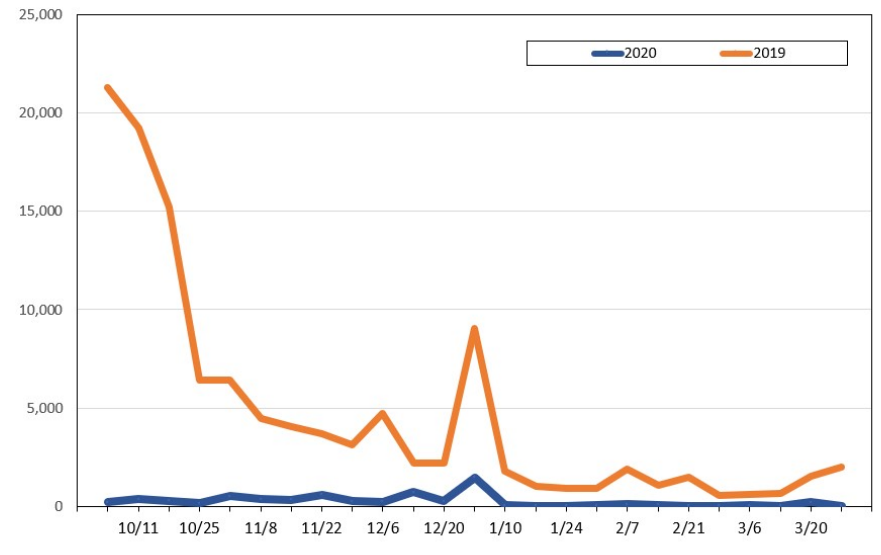
Update: Sep 21, 2020

Travel Agency Weekly Bookings for Future Travel to Hawai'i as of September 21, 2020
U.S.



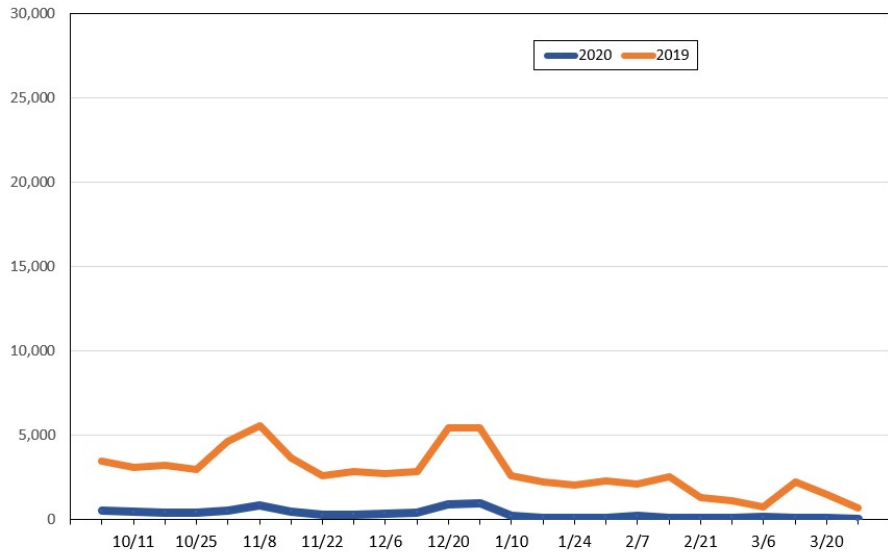
Source: Global Agency Pro, as of September 21, 2020

Travel Agency Weekly Bookings for Future Travel to Hawai'i as of September 21, 2020
Japan



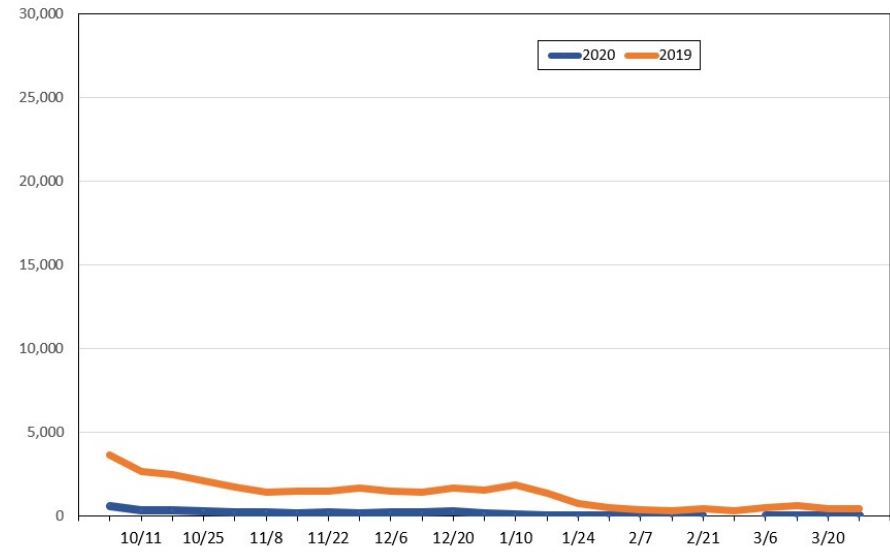
Source: Global Agency Pro, as of September 21, 2020

Travel Agency Weekly Bookings for Future Travel to Hawai'i as of September 21, 2020
Canada



Source: Global Agency Pro, as of September 21, 2020

Travel Agency Weekly Bookings for Future Travel to Hawai'i as of September 21, 2020
Australia



Source: Global Agency Pro, as of September 21, 2020