

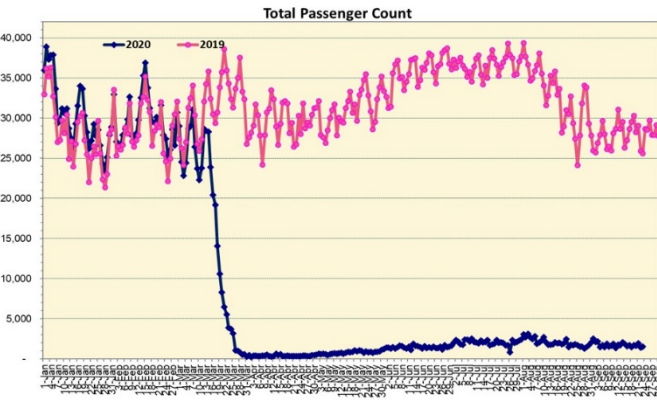
HTA COVID-19 UPDATE

(Issued: 9/24/20 @ 4:00pm)

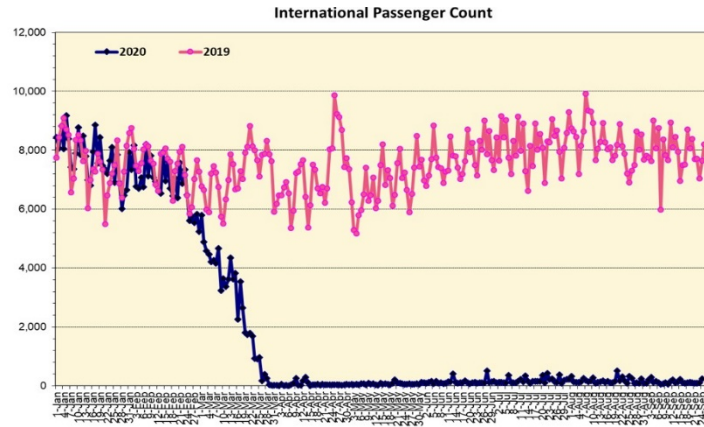
Novel Coronavirus in Hawaii

COVID-19 Positive* Cases

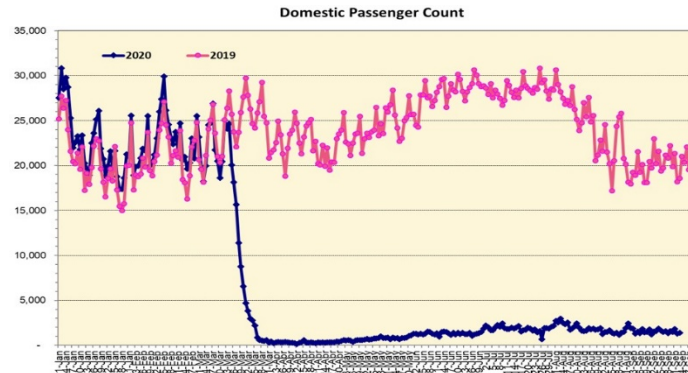
Cumulative totals as of 12:00 noon on September 24, 2020



Note: Excludes flights from Canada



Note: Excludes flights from Canada



Daily Passenger Count Table

09/23/2020	Domestic	International	Total
Oahu	1179	105	1284
Maui	138		138
Island of Hawaii	90		90
Kauai	0		0
State	1407	105	1512

Market Impact Update: <https://www.dropbox.com/09/24/20 HTA COVID19 Update>

09/23/20 Hawaii Passenger Trans-Pacific Arrivals by Air	Honolulu (HNL)	Kahului (OGG)	Kona (KOA)	Lihue (LIH)	Grand Total
Airline Crew	227	20	10	2	259
Corporate Meeting	1	0	0	0	1
Essential Worker	78	21	8	5	112
Intended Resident	119	23	22	1	165
Military or Federal Government	138	1	0	0	139
Other	138	0	26	0	164
Other Business	62	13	9	1	85
Pleasure/Vacation	31	12	5	0	48
Returning Resident	434	63	47	3	547
To Attend School	17	0	60	0	77
To Get Married	2	2	0	0	4
Visiting Friends or Relatives	179	29	7	4	219
Transit	N/A	N/A	N/A	N/A	N/A
Grand Total	1,426	184	194	16	1,820

Source: Safe Travels program developed by the State of Hawaii Office of Enterprise Technology Services

Note: The data is preliminary and subject to change

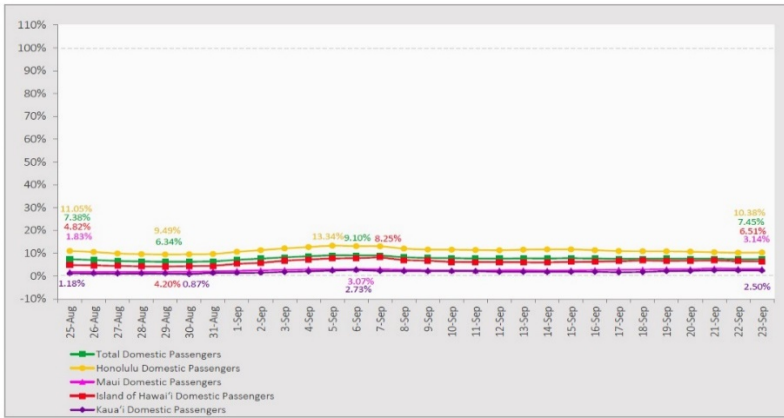
Statewide	Total
Total Cases	11,779 (90 new)
Released from Isolation+	5,265
Required Hospitalization	779
Deaths	124
BY COUNTY	Total
Hawaii County	
Total Cases	677
Released from Isolation+	492
Required Hospitalization	37
Deaths	15
Honolulu County	
Total Cases	10,627
Released from Isolation+	4,442
Required Hospitalization	687
Deaths	99
Kauai County	
Total Cases	57
Released from Isolation+	56
Required Hospitalization	1
Deaths	0
Maui County	
Total Cases	388
Released from Isolation+	275
Required Hospitalization	52
Deaths	9
HI Residents diagnosed outside of HI	30
County Pending	0

*includes presumptive and confirmed cases, data are preliminary and subject to change; note that CDC provides case counts according to states of residence.

+Isolation should be maintained until at least 3 days (72 hours) after resolution of fever and myalgia without the use of antipyretics OR at least 7 days have passed since symptom onset, whichever is longer.

7-Day Domestic by Island Moving Average Daily Passenger Volume

2020 Volume as Percentage of 2019 Volume
Through September 23, 2020



Source: HVCB analysis based on data from DBEDT
Note: Passenger volume figures include both visitors and residents.

Domestic by Island Month-to-Date and Year-to-Date Daily Passenger Volume

2020 Volume versus 2019 Volume
Through September 23, 2020

September 2020 (Month-to-Date through September 23)

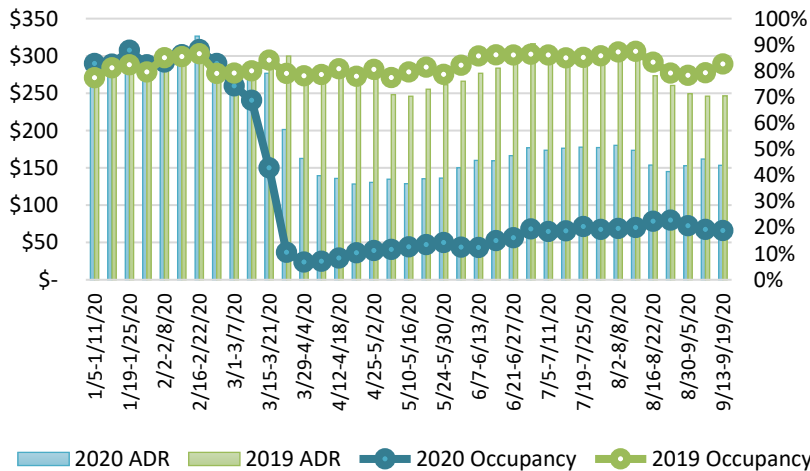
	2020	2019	Volume Change	Percent Change
Honolulu	29,674	256,929	-227,255	-88.5%
Maui County	3,485	122,433	-118,948	-97.2%
Island of Hawai'i	2,938	42,393	-39,455	-93.1%
Kaua'i	800	39,974	-39,174	-98.0%
Total	36,896	461,729	-424,833	-92.0%

2020 (Year-to-Date through September 23)

	2020	2019	Volume Change	Percent Change
Honolulu	1,155,910	3,400,793	-2,244,883	-66.0%
Maui County	457,061	1,658,257	-1,201,197	-72.4%
Island of Hawai'i	228,718	739,918	-511,200	-69.1%
Kaua'i	151,918	566,711	-414,793	-73.2%
Total	1,993,606	6,365,679	-4,372,073	-68.7%

Source: HVCB analysis based on data from DBEDT
Note: Passenger volume figures include both visitors and residents. Total includes other international passengers. 2020 includes one additional day due to Leap Year (February 29th, 2020).

State of Hawai'i Hotel Performance by Week - 2020 vs 2019



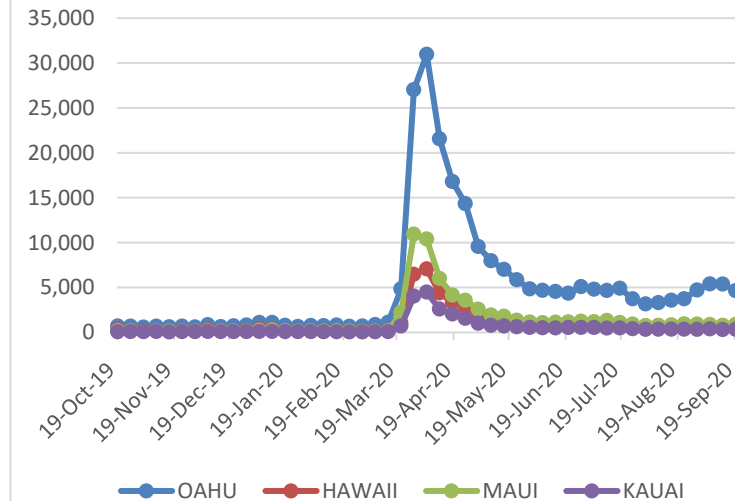
Source: STR, Inc. © Copyright 2020 Hawai'i Tourism Authority

Hawaii Hotel Performance Info:

For the week of September 13 – September 19, 2020

	Occupancy	ADR	RevPAR
State of Hawaii	18.9%	\$ 153.41	\$ 28.95
Oahu	19.7%	\$ 156.36	\$ 30.87
Maui County	16.7%	\$ 161.05	\$ 26.86
Kauai County	14.8%	\$ 149.39	\$ 22.16
Island of Hawaii	22.3%	\$ 133.95	\$ 29.93

2020 Initial Weekly Unemployment Claims by Island



Weekly Unemployment Initial Claims: September 19, 2020

State of Hawaii	6,770
C&C of Oahu	4,650
Hawaii County	781
Maui County	881
Kauai County	340
Agent (filed in Hawaii against another state)	118

News Highlights

September 24, 2020

KITV4: [Gov. Ige approves city's emergency order ending the second stay-at-home/work-from-home order](#)

KHON2: [Businesses prepare to follow new rules for reopening on Thursday](#)

Honolulu Civil Beat: [Hawaii Has A New COVID-19 Response Team. Will It Make A Difference?](#)

Honolulu Civil Beat: [Lee Cataluna: 'Temptation Island' Is Playing It Safe On Maui](#)

The Maui News: [Mayor keen on more testing for trans-Pacific visitors](#)

West Hawaii Today: [Businesses guarded about Oct. 15 reopening](#)

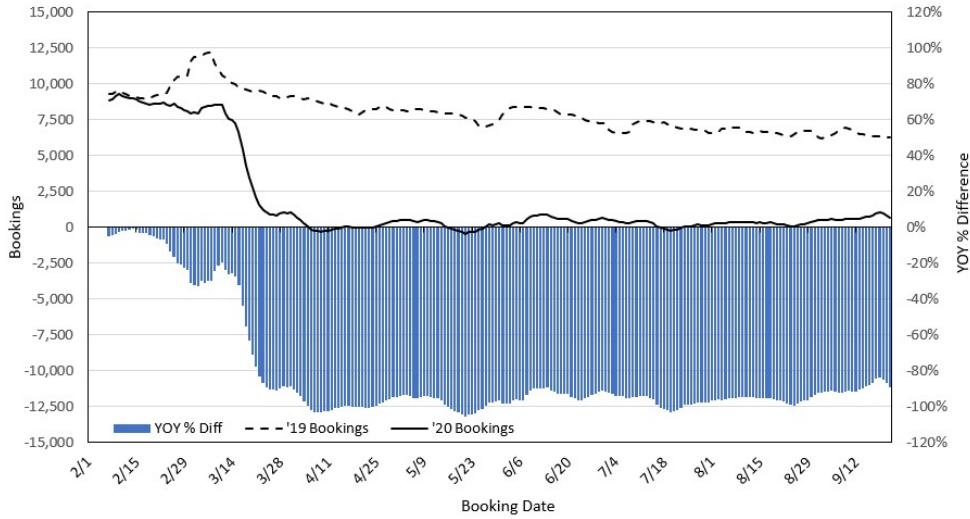
Budget Travel: [Hawaii to reopen October 15 with new Covid-19 testing requirements](#)

Conde Nast Traveler: [United Airlines Will Provide COVID-19 Tests on Flights to Hawaii](#)

Forbes: [Say Aloha To Self-Driving Cars As Hawaii Approves Roadway Testing, Though Paradise Not Assured](#)

Lonely Planet: [This is the happiest state in the US for the third year](#)

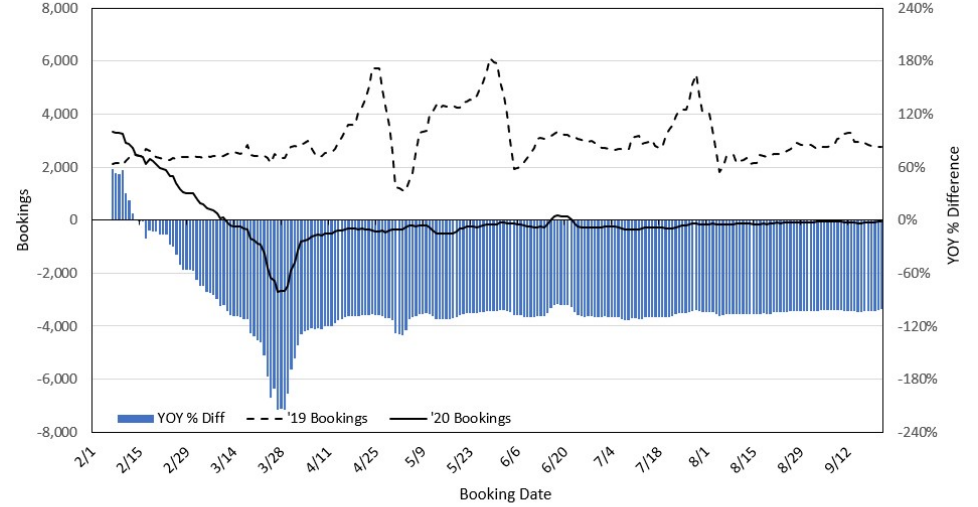
Travel Agency Bookings to Hawaii for Future Arrivals*
Based on a 7-day Moving Average, 2020 vs 2019
U.S.



*Future Arrivals refers to all arrivals that are 'future' relative to the referenced booking date.
 Source: Global Agency Pro

Update: Sep 22, 2020

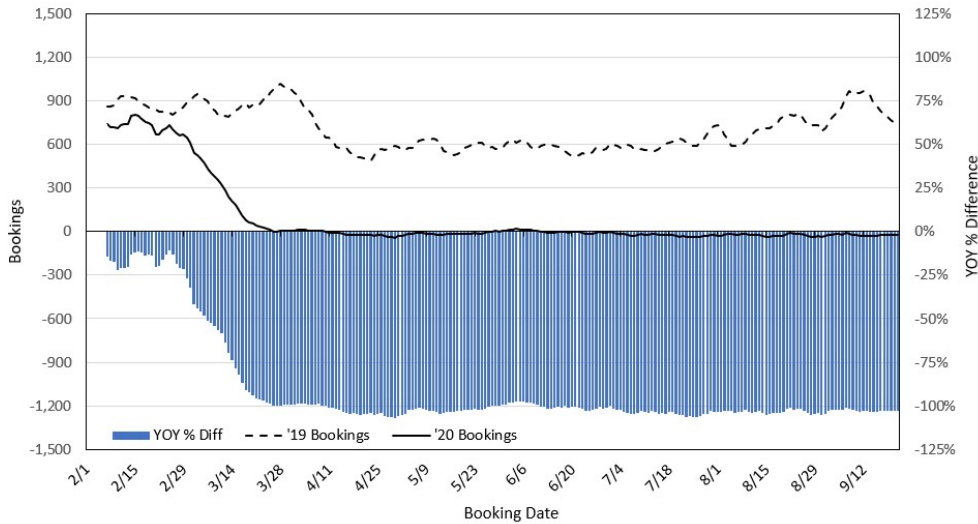
Travel Agency Bookings to Hawaii for Future Arrivals*
Based on a 7-day Moving Average, 2020 vs 2019
Japan



*Future Arrivals refers to all arrivals that are 'future' relative to the referenced booking date.
 Source: Global Agency Pro

Update: Sep 22, 2020

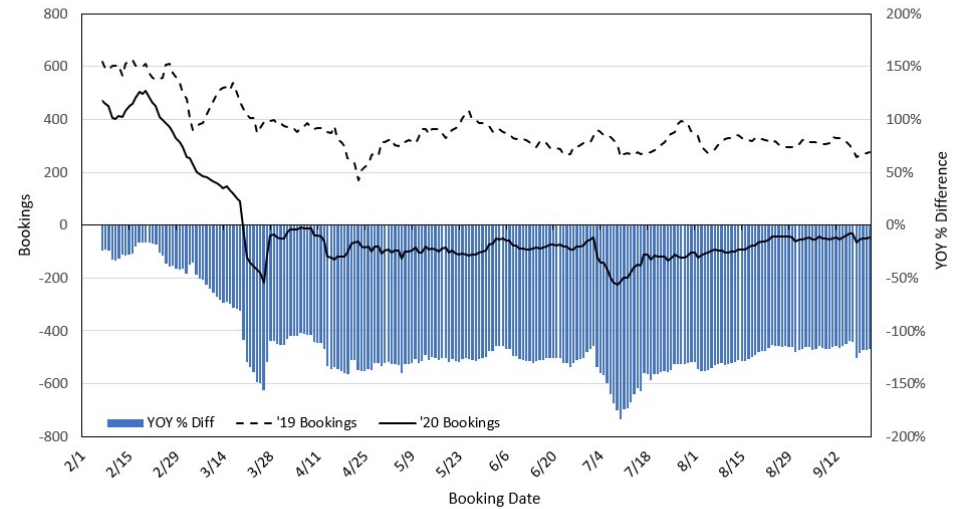
Travel Agency Bookings to Hawaii for Future Arrivals*
Based on a 7-day Moving Average, 2020 vs 2019
Canada



*Future Arrivals refers to all arrivals that are 'future' relative to the referenced booking date.
 Source: Global Agency Pro

Update: Sep 22, 2020

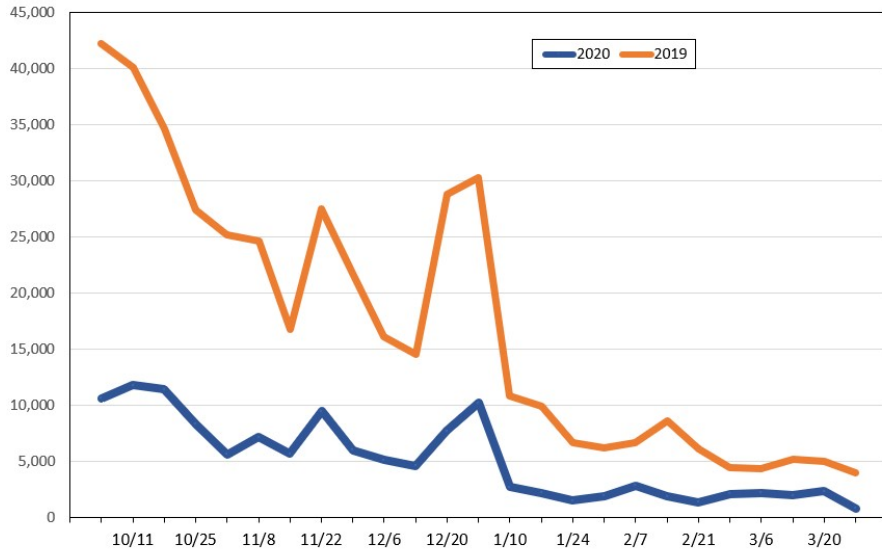
Travel Agency Bookings to Hawaii for Future Arrivals*
Based on a 7-day Moving Average, 2020 vs 2019
Australia



*Future Arrivals refers to all arrivals that are 'future' relative to the referenced booking date.
 Source: Global Agency Pro

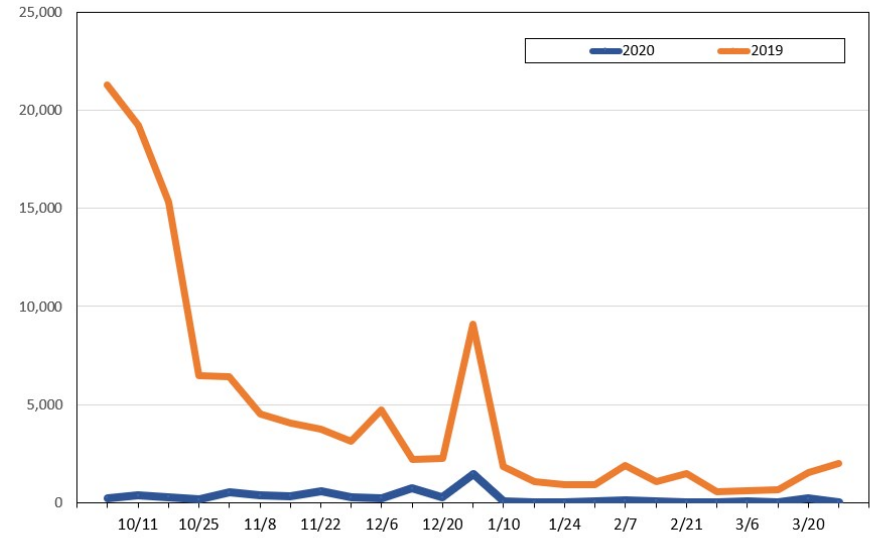
Update: Sep 22, 2020

Travel Agency Weekly Bookings for Future Travel to Hawai'i as of September 22, 2020
U.S.



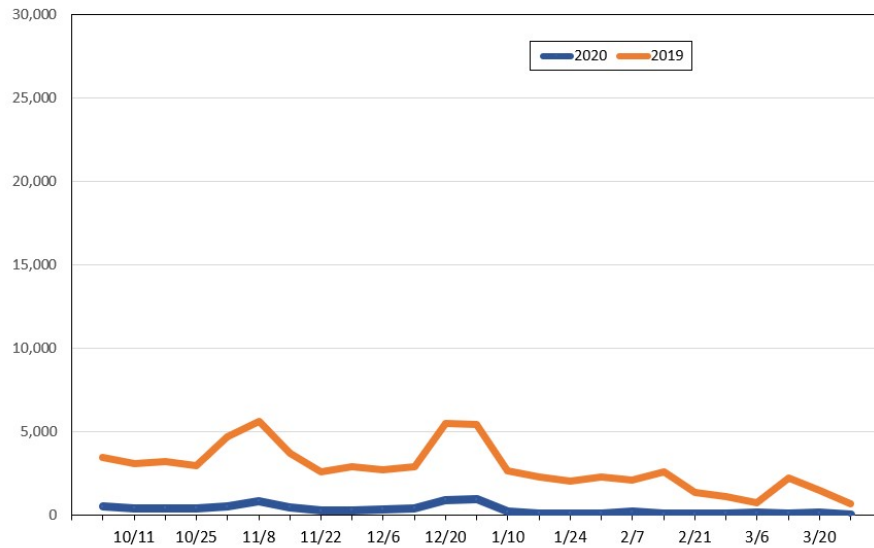
Source: Global Agency Pro, as of September 22, 2020

Travel Agency Weekly Bookings for Future Travel to Hawai'i as of September 22, 2020
Japan



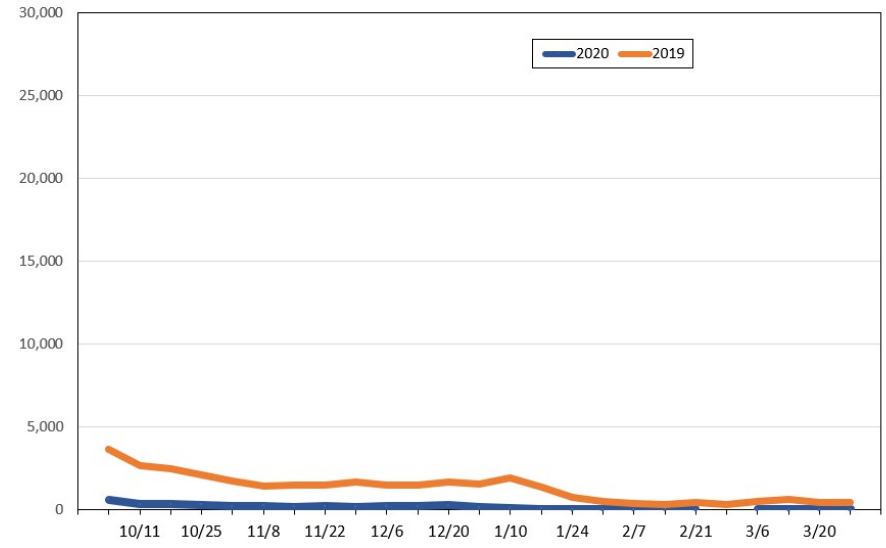
Source: Global Agency Pro, as of September 22, 2020

Travel Agency Weekly Bookings for Future Travel to Hawai'i as of September 22, 2020
Canada



Source: Global Agency Pro, as of September 22, 2020

Travel Agency Weekly Bookings for Future Travel to Hawai'i as of September 22, 2020
Australia



Source: Global Agency Pro, as of September 22, 2020