

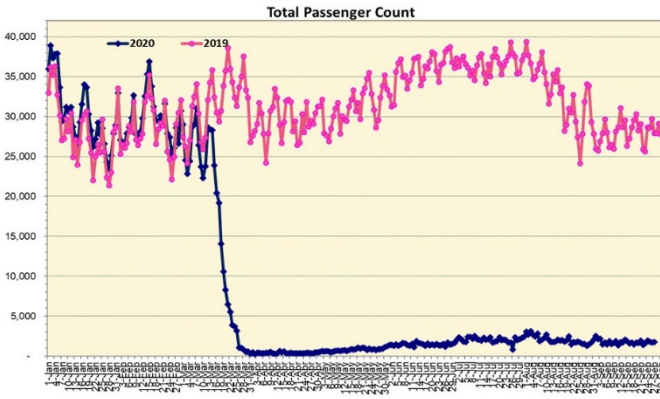
HTA COVID-19 UPDATE

(Issued: 9/28/20 @ 4:00pm)

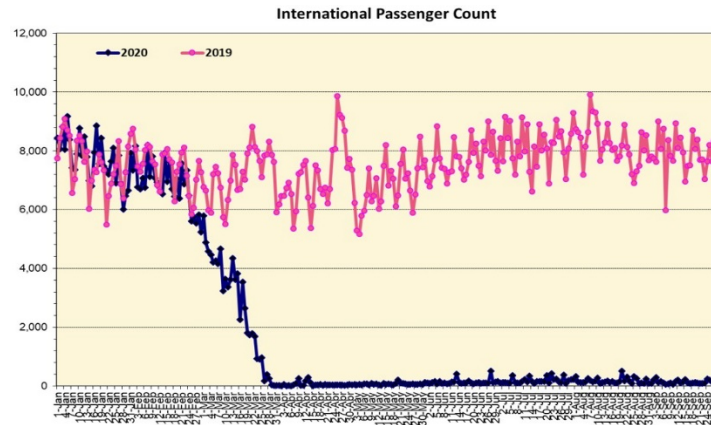
Novel Coronavirus in Hawaii

COVID-19 Positive* Cases

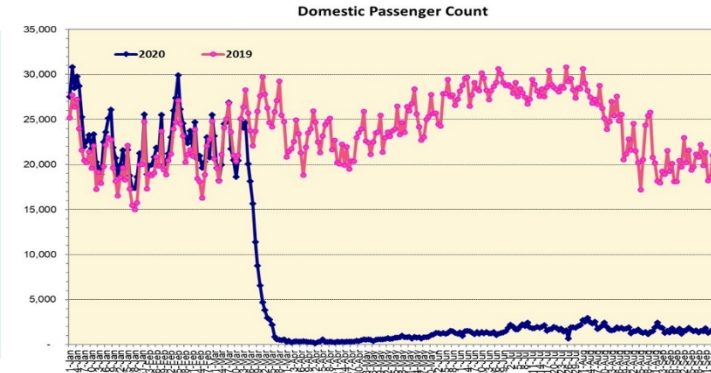
Cumulative totals as of 12:00 noon on September 28, 2020



Note: Excludes flights from Canada



Note: Excludes flights from Canada



Daily Passenger Count Table

09/27/2020	Domestic	International	Total
Oahu	1361	136	1497
Maui	142		142
Island of Hawaii	90		90
Kauai	23		23
State	1616	136	1752

Market Impact Update: <https://www.dropbox.com/09/28/20 HTA COVID19 Update>

09/27/20 Hawaii Passenger Trans-Pacific Arrivals by Air	Honolulu (HNL)	Kahului (OGG)	Kona (KOA)	Lihue (LIH)	Grand Total
Airline Crew	216	21	15	6	258
Essential Worker	100	31	14	6	151
Intended Resident	77	9	7	3	96
Military or Federal Government	157	2	1	0	160
Other	148	3	9	0	160
Other Business	57	40	7	7	111
Pleasure/Vacation	31	2	23	2	58
Returning Resident	460	61	52	15	588
Sports Event	1	0	0	0	1
To Attend School	9	0	2	0	11
Visiting Friends or Relatives	165	26	26	6	223
Transit	N/A	N/A	N/A	N/A	N/A
Grand Total	1,421	195	156	45	1,817

Source: Safe Travels program developed by the State of Hawaii Office of Enterprise Technology Services

Note: The data is preliminary and subject to change

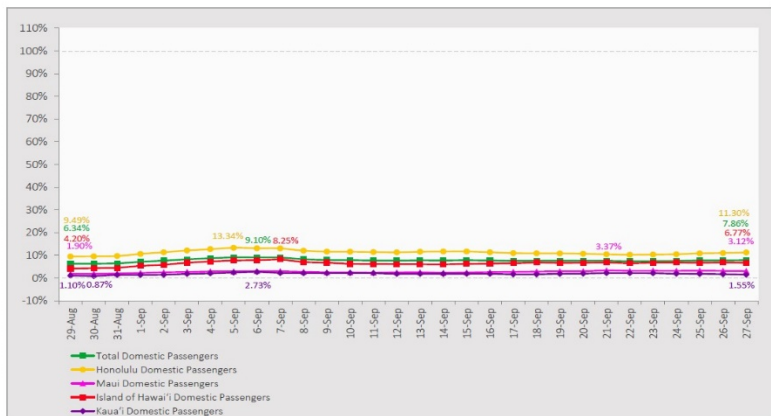
Statewide	Total
Total Cases	12,203 (90 new)
Released from Isolation+	10,215
Required Hospitalization	819
Deaths	132
BY COUNTY	Total
Hawaii County	
Total Cases	700
Released from Isolation+	592
Required Hospitalization	40
Deaths	15
Honolulu County	
Total Cases	11,026
Released from Isolation+	9,204
Required Hospitalization	721
Deaths	107
Kauai County	
Total Cases	59
Released from Isolation+	56
Required Hospitalization	1
Deaths	0
Maui County	
Total Cases	388
Released from Isolation+	363
Required Hospitalization	55
Deaths	9
HI Residents diagnosed outside of HI	30
County Pending	0

*includes presumptive and confirmed cases, data are preliminary and subject to change; note that CDC provides case counts according to states of residence.

+Isolation should be maintained until at least 3 days (72 hours) after resolution of fever and myalgia without the use of antipyretics OR at least 7 days have passed since symptom onset, whichever is longer.

7-Day Domestic by Island Moving Average Daily Passenger Volume

2020 Volume as Percentage of 2019 Volume
Through September 27, 2020



Source: HVCB analysis based on data from DBEDT
Note: Passenger volume figures include both visitors and residents.

Domestic by Island Month-to-Date and Year-to-Date Daily Passenger Volume

2020 Volume versus 2019 Volume
Through September 27, 2020

September 2020 (Month-to-Date through September 27)

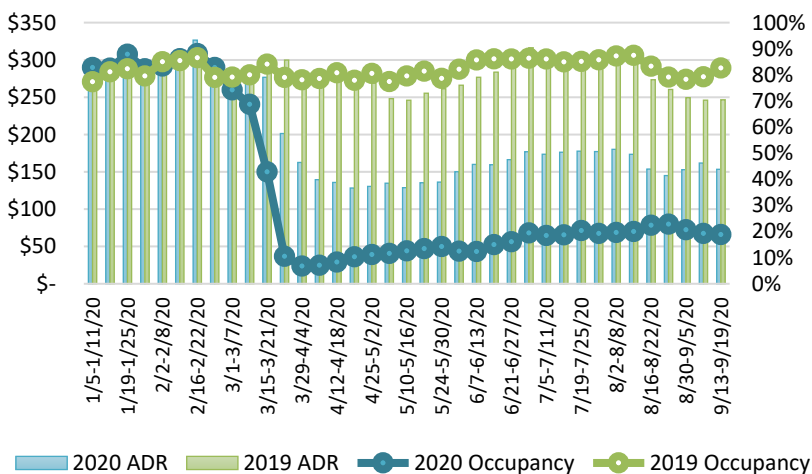
	2020	2019	Volume Change	Percent Change
Honolulu	34,819	300,968	-266,149	-88.4%
Maui County	4,175	142,325	-138,150	-97.1%
Island of Hawai'i	3,495	49,764	-46,269	-93.0%
Kaua'i	889	46,778	-45,889	-98.1%
Total	43,378	539,835	-496,457	-92.0%

2020 (Year-to-Date through September 27)

	2020	2019	Volume Change	Percent Change
Honolulu	1,161,055	3,444,832	-2,283,777	-66.3%
Maui County	457,751	1,678,149	-1,220,398	-72.7%
Island of Hawai'i	229,275	747,289	-518,014	-69.3%
Kaua'i	152,007	573,515	-421,508	-73.5%
Total	2,000,088	6,443,785	-4,443,698	-69.0%

Source: HVCB analysis based on data from DBEDT
Note: Passenger volume figures include both visitors and residents. Total includes other international passengers. 2020 includes one additional day due to Leap Year (February 29th, 2020).

State of Hawai'i Hotel Performance by Week - 2020 vs 2019



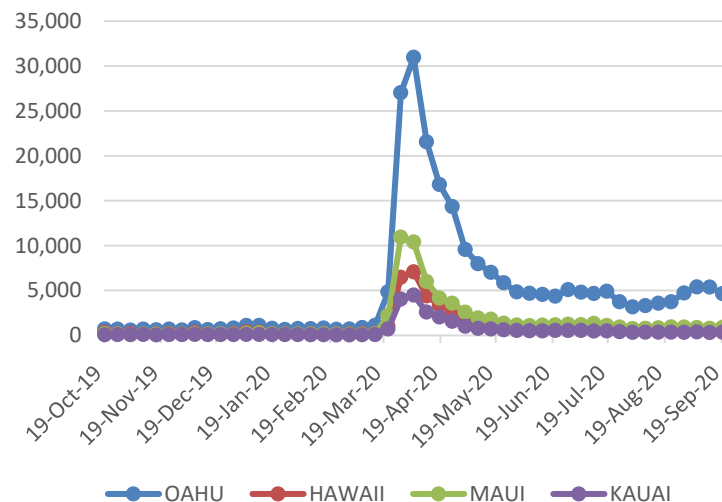
Source: STR, Inc. © Copyright 2020 Hawai'i Tourism Authority

Hawaii Hotel Performance Info:

For the week of September 13 – September 19, 2020

	Occupancy	ADR	RevPAR
State of Hawaii	18.9%	\$ 153.41	\$ 28.95
Oahu	19.7%	\$ 156.36	\$ 30.87
Maui County	16.7%	\$ 161.05	\$ 26.86
Kauai County	14.8%	\$ 149.39	\$ 22.16
Island of Hawaii	22.3%	\$ 133.95	\$ 29.93

2020 Initial Weekly Unemployment Claims by Island



Weekly Unemployment Initial Claims: September 19, 2020

State of Hawaii	6,770
C&C of Oahu	4,650
Hawaii County	781
Maui County	881
Kauai County	340
Agent (filed in Hawaii against another state)	118

News Highlights

September 28, 2020

Hawaii News Now: [Trans-Pacific travel set to resume soon, but inter-island travel plans still unclear](#)

Honolulu Star Advertiser: [Officials scramble to fix bugs in Safe Travels before visitors return to Hawaii](#)

Honolulu Star Advertiser: [Springboard Hospitality is growing even in the midst of the global pandemic](#)

Honolulu Star Advertiser: [Visitors to Oahu will face confusing COVID-19 restrictions](#)

Honolulu Civil Beat: [Coronavirus Relief Funds Are Helping These Workers Train For New Careers](#)

Honolulu Civil Beat: [Hawaii Has A Plan To Restart Tourism Safely. Will It Work?](#)

The Maui News: [Pre-tested visitors don't belong in 'bubble' hotels](#)

West Hawaii Today: [Larger Big Island employers furloughed or laid off nearly 6,000 workers](#)

The Garden Island: [Can Kauai businesses recover from COVID-19? If so ... HOW?](#)

Helpful Resources

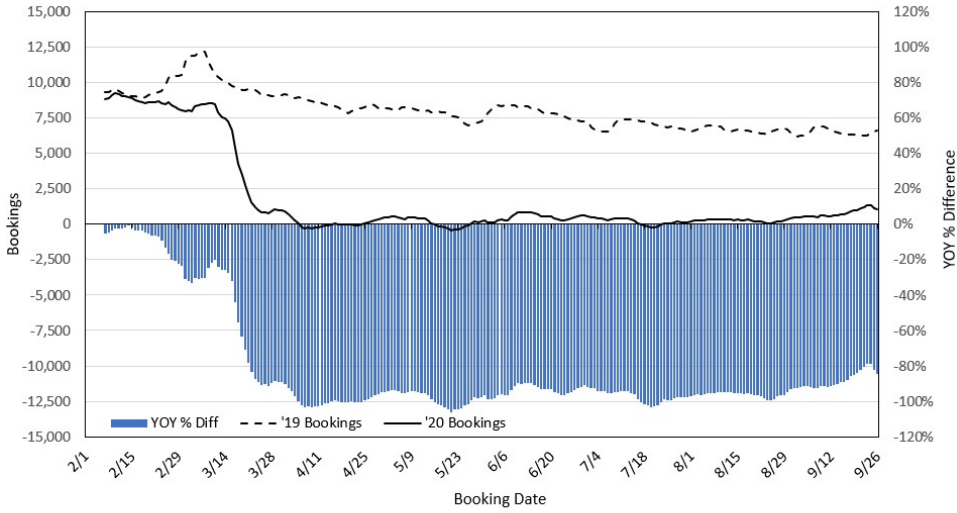
Department of Health
<https://hawaiiocovid19.com/>

Department of Health
<https://health.hawaii.gov/docd/advisories/novel-coronavirus-2019>

Dept. of Business, Economic Development & Tourism
<https://dbedt.hawaii.gov/economic/covid19/>

Department of Transportation
<https://hidot.hawaii.gov/coronavirus/>

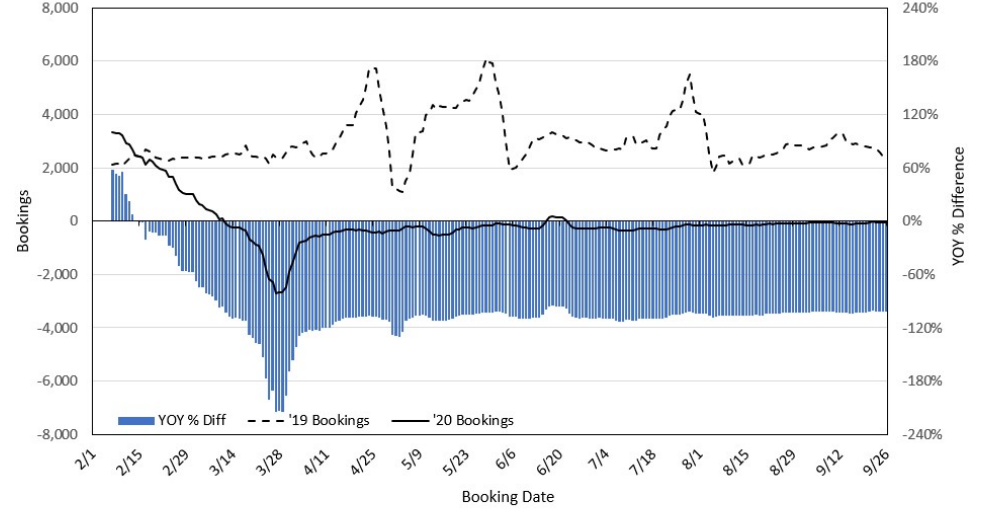
Travel Agency Bookings to Hawaii for Future Arrivals*
Based on a 7-day Moving Average, 2020 vs 2019
U.S.



*Future Arrivals refers to all arrivals that are 'future' relative to the referenced booking date.
 Source: Global Agency Pro

Update: Sep 26, 2020

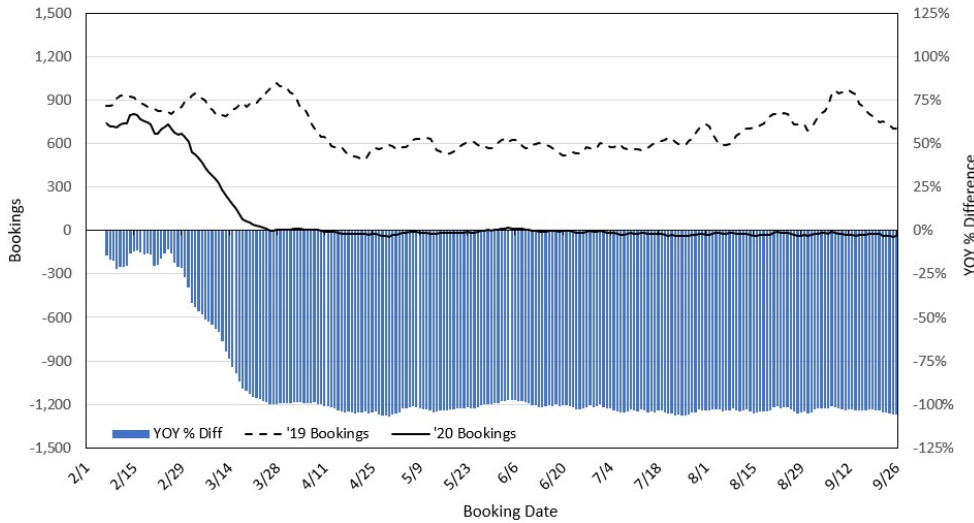
Travel Agency Bookings to Hawaii for Future Arrivals*
Based on a 7-day Moving Average, 2020 vs 2019
Japan



*Future Arrivals refers to all arrivals that are 'future' relative to the referenced booking date.
 Source: Global Agency Pro

Update: Sep 26, 2020

Travel Agency Bookings to Hawaii for Future Arrivals*
Based on a 7-day Moving Average, 2020 vs 2019
Canada



*Future Arrivals refers to all arrivals that are 'future' relative to the referenced booking date.
 Source: Global Agency Pro

Update: Sep 26, 2020

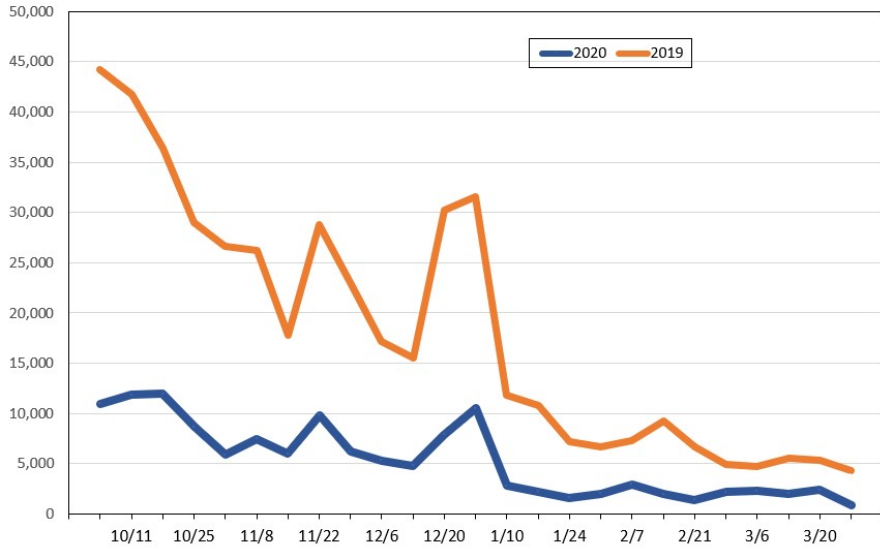
Travel Agency Bookings to Hawaii for Future Arrivals*
Based on a 7-day Moving Average, 2020 vs 2019
Australia



*Future Arrivals refers to all arrivals that are 'future' relative to the referenced booking date.
 Source: Global Agency Pro

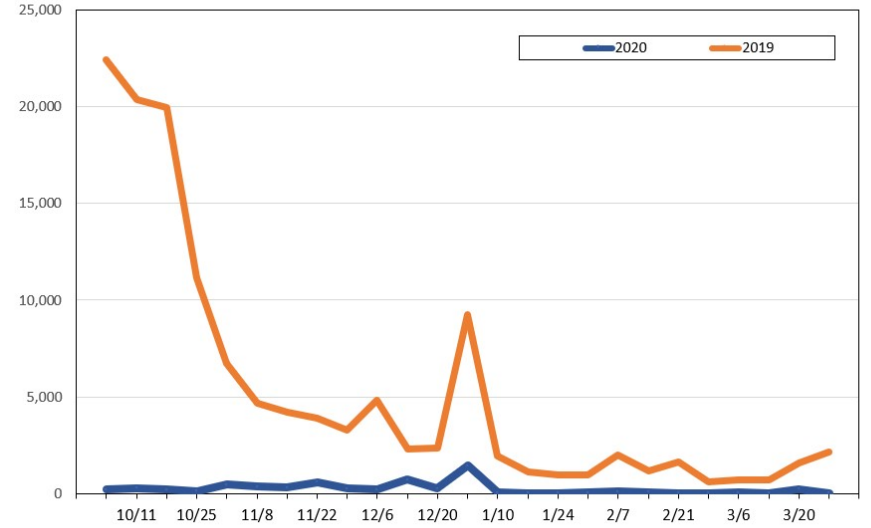
Update: Sep 26, 2020

Travel Agency Weekly Bookings for Future Travel to Hawai'i as of September 26, 2020
U.S.



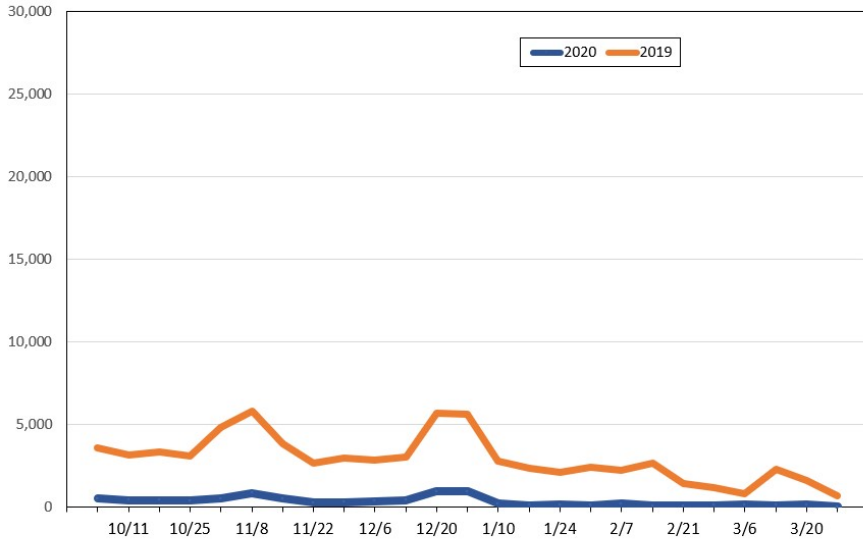
Source: Global Agency Pro, as of September 26, 2020

Travel Agency Weekly Bookings for Future Travel to Hawai'i as of September 26, 2020
Japan



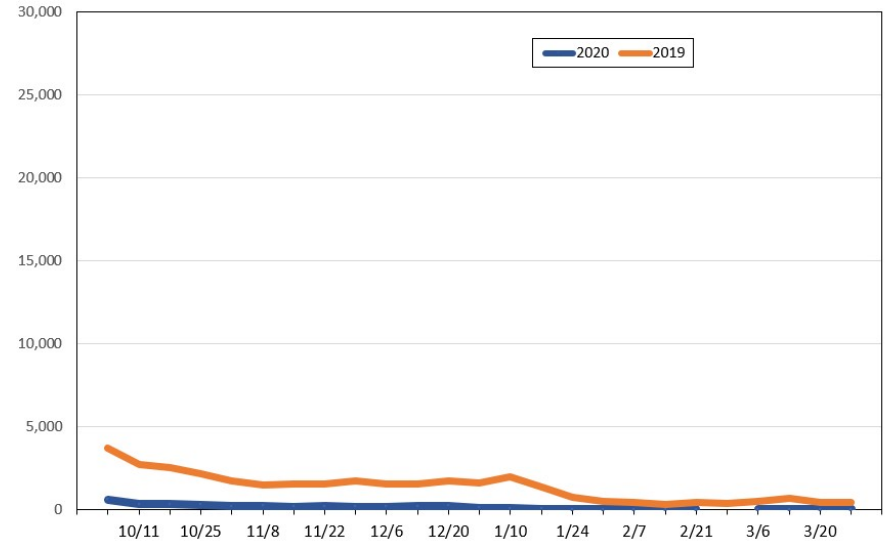
Source: Global Agency Pro, as of September 26, 2020

Travel Agency Weekly Bookings for Future Travel to Hawai'i as of September 26, 2020
Canada



Source: Global Agency Pro, as of September 26, 2020

Travel Agency Weekly Bookings for Future Travel to Hawai'i as of September 26, 2020
Australia



Source: Global Agency Pro, as of September 26, 2020