

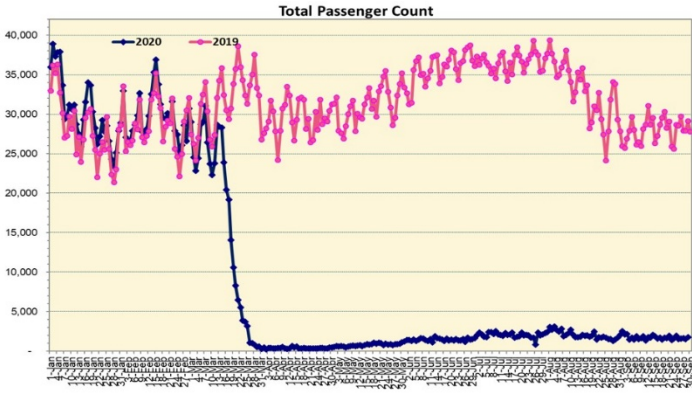
HTA COVID-19 UPDATE

(Issued: 9/30/20 @ 4:00pm)

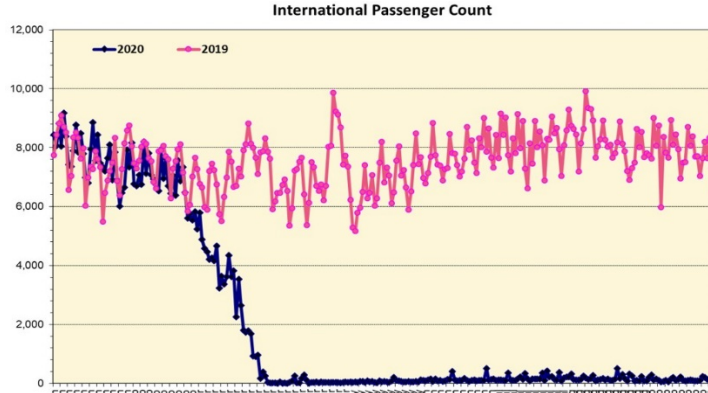
Novel Coronavirus in Hawaii

COVID-19 Positive* Cases

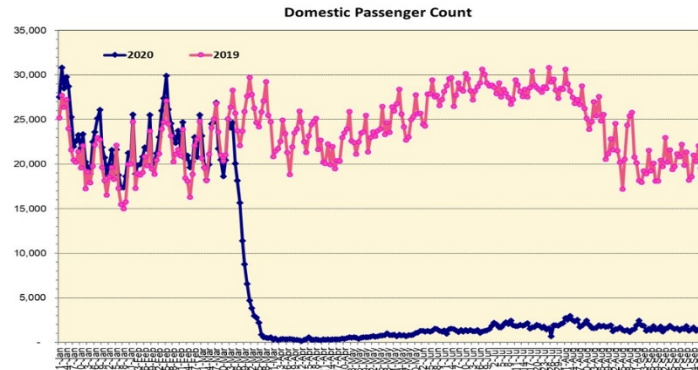
Cumulative totals as of 12:00 noon on September 30, 2020



Note: Excludes flights from Canada



Note: Excludes flights from Canada



Daily Passenger Count Table

09/29/2020	Domestic	International	Total
Oahu	1341	183	1524
Maui	166		166
Island of Hawaii	68		68
Kauai	0		0
State	1575	183	1758

Market Impact Update: <https://www.dropbox.com/09/30/20 HTA COVID19 Update>

09/29/20 Hawaii Passenger Trans-Pacific Arrivals by Air	Honolulu (HNL)	Kahului (OGG)	Kona (KOA)	Lihue (LIH)	Grand Total
Airline Crew	229	21	26	0	276
Corporate Meeting	2	0	0	0	2
Essential Worker	84	25	14	0	123
Incentive Trip	1	0	0	0	1
Intended Resident	111	16	11	0	138
Military or Federal Government	217	0	0	0	217
Other	191	9	3	4	207
Other Business	59	11	5	3	78
Pleasure/Vacation	42	3	13	1	59
Returning Resident	533	85	43	6	667
To Attend School	13	0	0	0	13
To Get Married	2	0	0	0	2
Visiting Friends or Relatives	191	24	25	0	240
Transit	N/A	N/A	N/A	N/A	N/A
Grand Total	1,675	194	140	14	2,023

Source: Safe Travels program developed by the State of Hawaii Office of Enterprise Technology Services

Note: The data is preliminary and subject to change

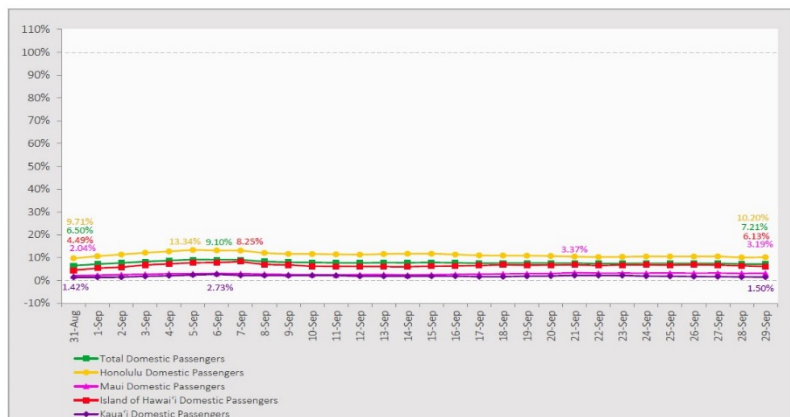
Statewide	Total
Total Cases	12,410 (121 new)
Released from Isolation+	10,298
Required Hospitalization	847
Deaths	136
BY COUNTY	Total
Hawaii County	
Total Cases	730
Released from Isolation+	600
Required Hospitalization	41
Deaths	15
Honolulu County	
Total Cases	11,197
Released from Isolation+	9,277
Required Hospitalization	747
Deaths	111
Kauai County	
Total Cases	59
Released from Isolation+	56
Required Hospitalization	1
Deaths	0
Maui County	
Total Cases	391
Released from Isolation+	365
Required Hospitalization	56
Deaths	9
HI Residents diagnosed outside of HI	33
County Pending	0

*includes presumptive and confirmed cases, data are preliminary and subject to change; note that CDC provides case counts according to states of residence.

+Isolation should be maintained until at least 3 days (72 hours) after resolution of fever and myalgia without the use of antipyretics OR at least 7 days have passed since symptom onset, whichever is longer.

7-Day Domestic by Island Moving Average Daily Passenger Volume

2020 Volume as Percentage of 2019 Volume
Through September 29, 2020



Source: HVCB analysis based on data from DBEDT
Note: Passenger volume figures include both visitors and residents.

Domestic by Island Month-to-Date and Year-to-Date Daily Passenger Volume

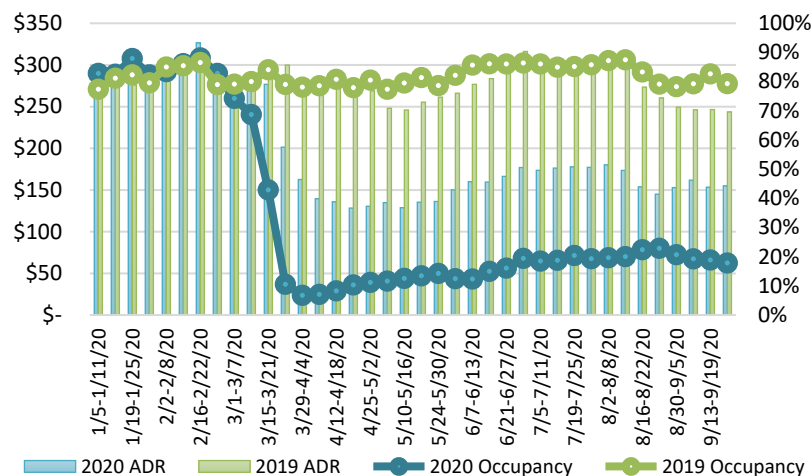
2020 Volume versus 2019 Volume
Through September 29, 2020

	2020	2019	Volume Change	Percent Change
Honolulu	36,649	323,214	-286,565	-88.7%
Maui County	4,526	153,699	-149,173	-97.1%
Island of Hawai'i	3,677	53,784	-50,107	-93.2%
Kaua'i	958	50,720	-49,762	-98.1%
Total	45,810	581,417	-535,607	-92.1%

	2020	2019	Volume Change	Percent Change
Honolulu	1,162,885	3,467,078	-2,304,193	-66.5%
Maui County	458,102	1,689,523	-1,231,422	-72.9%
Island of Hawai'i	229,457	751,309	-521,852	-69.5%
Kaua'i	152,076	577,457	-425,381	-73.7%
Total	2,002,520	6,485,367	-4,482,848	-69.1%

Source: HVCB analysis based on data from DBEDT
Notes: Passenger volume figures include both visitors and residents. Total includes other international passengers. 2020 includes one additional day due to Leap Year (February 29th, 2020).

State of Hawai'i Hotel Performance by Week - 2020 vs 2019



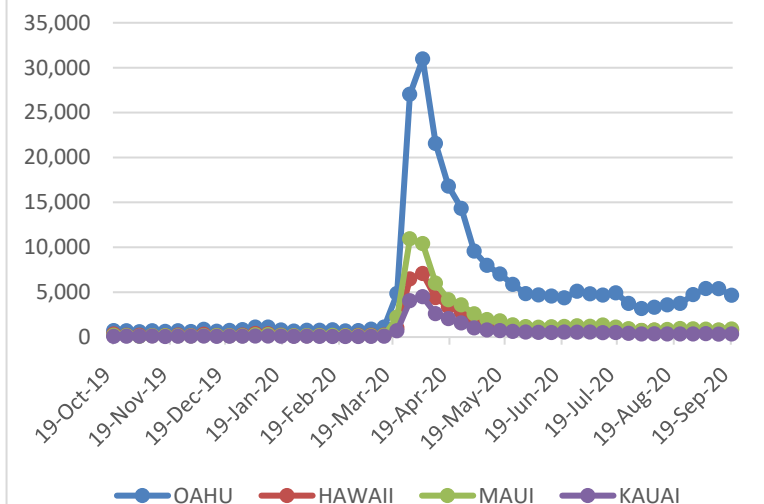
Source: STR, Inc. © Copyright 2020 Hawai'i Tourism Authority

Hawai'i Hotel Performance Info:

For the week of September 20 – September 26, 2020

	Occupancy	ADR	RevPAR
State of Hawaii	17.8%	\$ 154.88	\$ 27.60
Oahu	18.2%	\$ 156.00	\$ 28.32
Maui County	15.9%	\$ 166.22	\$ 26.41
Kauai County	15.5%	\$ 156.50	\$ 24.30
Island of Hawaii	21.7%	\$ 134.67	\$ 29.26

2020 Initial Weekly Unemployment Claims by Island



Weekly Unemployment Initial Claims: September 19, 2020

State of Hawaii	6,770
C&C of Oahu	4,650
Hawaii County	781
Maui County	881
Kauai County	340
Agent (filed in Hawaii against another state)	118

News Highlights

September 30, 2020

Hawaii News Now: [Councilman calls on the governor to prove Hawaii is ready to welcome back visitors](#)

KHON2: [UH West Oahu confirms student died from COVID-19](#)

KHON2: [Mayors want inter-island travelers tested after arrival, but admit there aren't enough tests](#)

Hawaii Tribune-Herald: [Trans-Pacific travel: Ready for prime time? Kim says no](#)

Hawaii Tribune-Herald: [Your Views for September 30](#)

The Garden Island: [Kauai COVID cases Mainland linked](#)

The Garden Island: [Cases not infectious while traveling](#)

Travel Pulse: [Trump Administration Reportedly Extends No Sail Order for Cruises](#)

Travel Weekly: [NYC hotels buckling under weight of Covid rules and debt](#)

Forbes: [American Airlines Is The Latest Carrier To Offer Pre-Flight COVID-19 Testing](#)

Helpful Resources

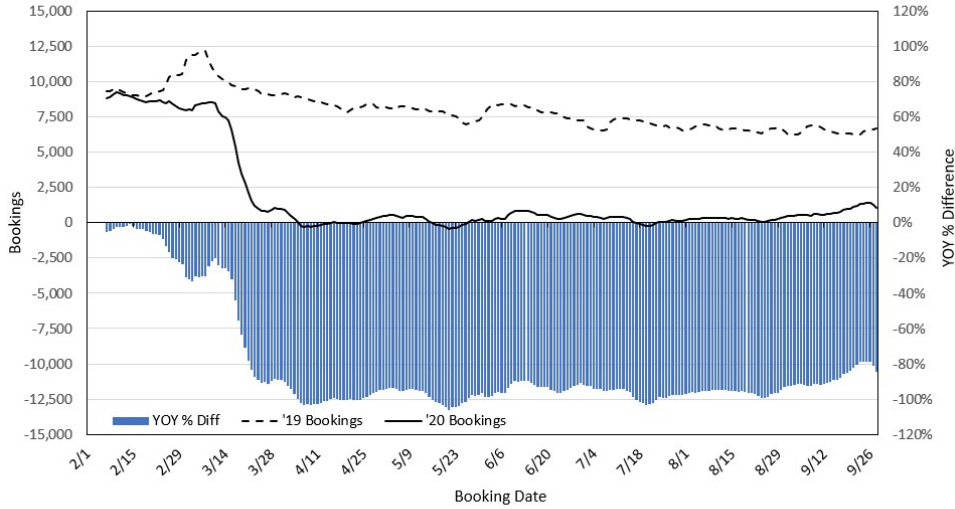
Department of Health
<https://hawaiiocovid19.com/>

Department of Health
<https://health.hawaii.gov/docd/advisories/novel-coronavirus-2019>

Dept. of Business, Economic Development & Tourism
<https://dbedt.hawaii.gov/economic/covid19/>

Department of Transportation
<https://hidot.hawaii.gov/coronavirus/>

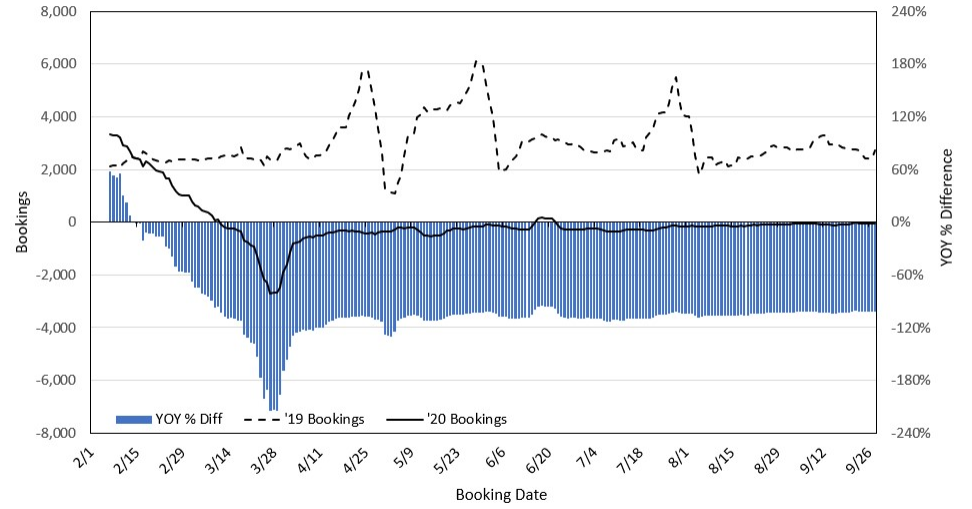
**Travel Agency Bookings to Hawaii for Future Arrivals*
Based on a 7-day Moving Average, 2020 vs 2019
U.S.**



*Future Arrivals refers to all arrivals that are 'future' relative to the referenced booking date.
Source: Global Agency Pro

Update: Sep 28, 2020

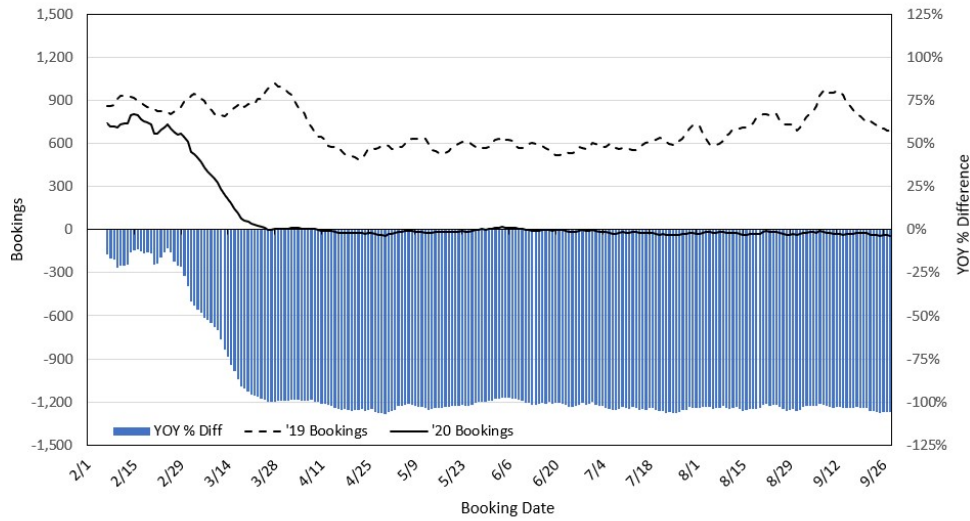
**Travel Agency Bookings to Hawaii for Future Arrivals*
Based on a 7-day Moving Average, 2020 vs 2019
Japan**



*Future Arrivals refers to all arrivals that are 'future' relative to the referenced booking date.
Source: Global Agency Pro

Update: Sep 28, 2020

**Travel Agency Bookings to Hawaii for Future Arrivals*
Based on a 7-day Moving Average, 2020 vs 2019
Canada**



*Future Arrivals refers to all arrivals that are 'future' relative to the referenced booking date.
Source: Global Agency Pro

Update: Sep 28, 2020

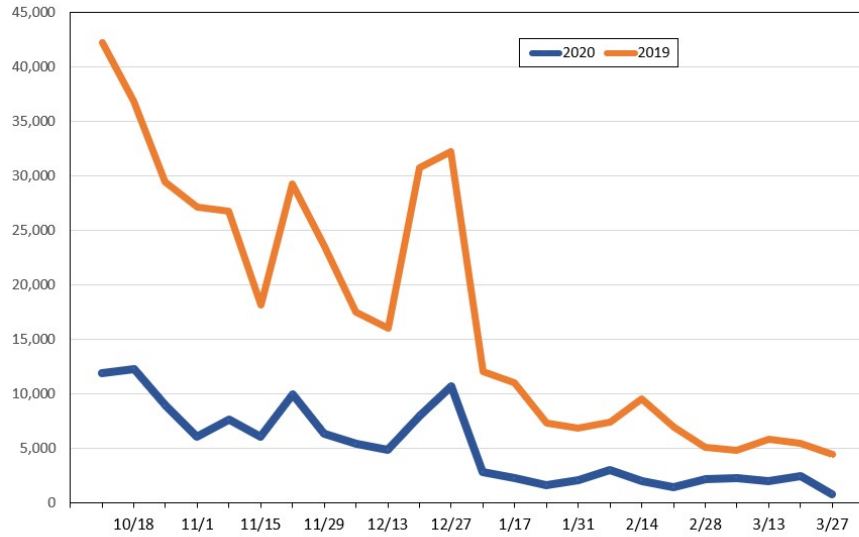
**Travel Agency Bookings to Hawaii for Future Arrivals*
Based on a 7-day Moving Average, 2020 vs 2019
Australia**



*Future Arrivals refers to all arrivals that are 'future' relative to the referenced booking date.
Source: Global Agency Pro

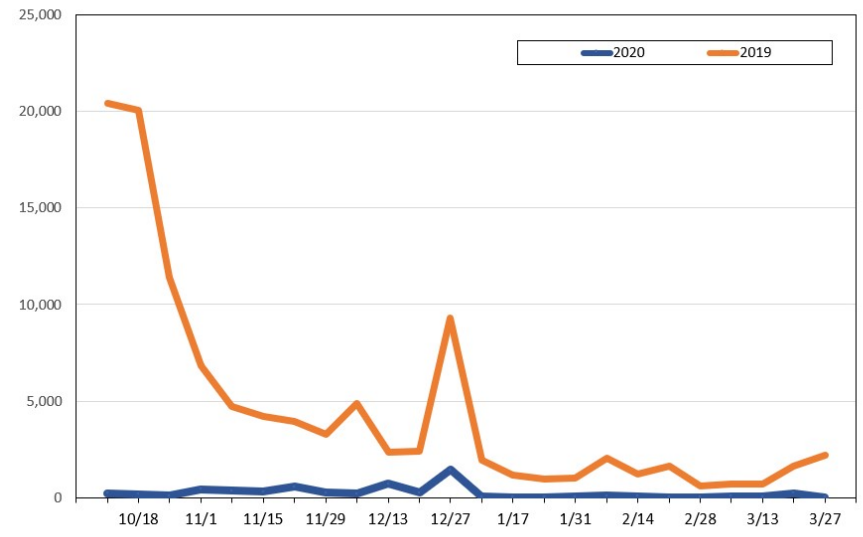
Update: Sep 28, 2020

Travel Agency Weekly Bookings for Future Travel to Hawai'i as of September 28, 2020
U.S.



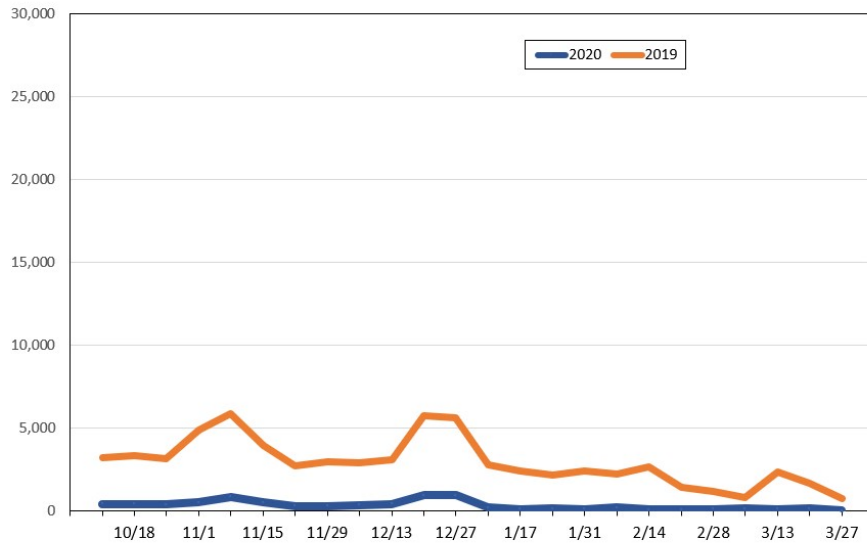
Source: Global Agency Pro, as of September 28, 2020

Travel Agency Weekly Bookings for Future Travel to Hawai'i as of September 28, 2020
Japan



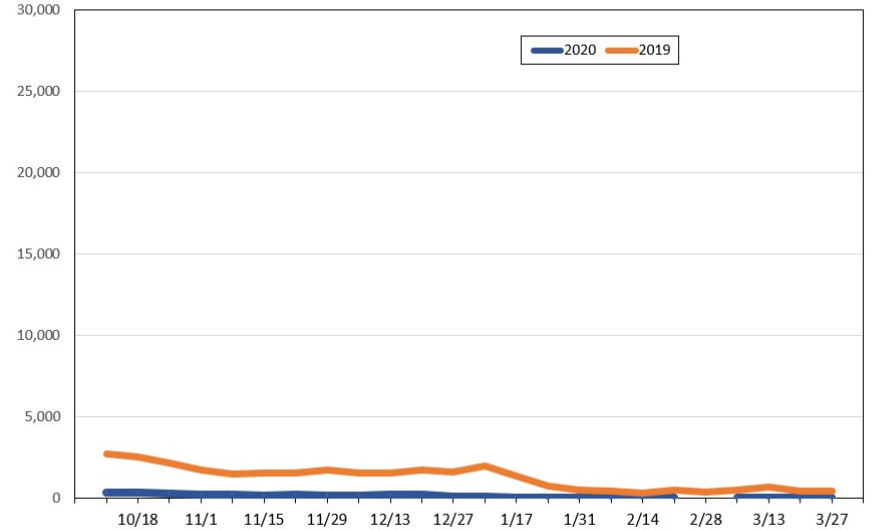
Source: Global Agency Pro, as of September 28, 2020

Travel Agency Weekly Bookings for Future Travel to Hawai'i as of September 28, 2020
Canada



Source: Global Agency Pro, as of September 28, 2020

Travel Agency Weekly Bookings for Future Travel to Hawai'i as of September 28, 2020
Australia



Source: Global Agency Pro, as of September 28, 2020