

HTA COVID-19 UPDATE

(Issued: 10/2/20 @ 4:00pm)

Novel Coronavirus in Hawaii

COVID-19 Positive* Cases

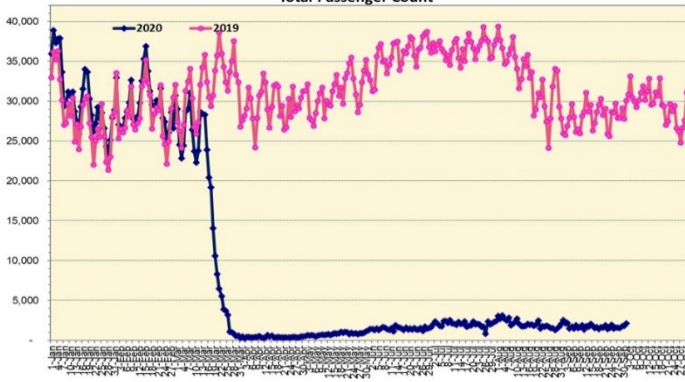
Cumulative totals as of 12:00 noon on October 2, 2020

Statewide	Total
Total Cases	12,601 (87 new)
Released from Isolation†	10,389
Required Hospitalization	880
Deaths	142
BY COUNTY	Total
Hawaii County	
Total Cases	752
Released from Isolation†	618
Required Hospitalization	42
Deaths	15
Honolulu County	
Total Cases	11,365
Released from Isolation†	9,349
Required Hospitalization	779
Deaths	117
Kauai County	
Total Cases	59
Released from Isolation†	56
Required Hospitalization	1
Deaths	0
Maui County	
Total Cases	391
Released from Isolation†	366
Required Hospitalization	56
Deaths	9
HI Residents diagnosed outside of HI	34
County Pending	0

*includes presumptive and confirmed cases, data are preliminary and subject to change; note that CDC provides case counts according to states of residence.

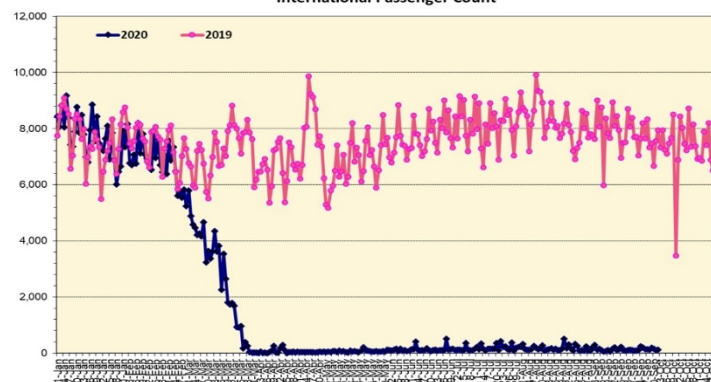
†Isolation should be maintained until at least 3 days (72 hours) after resolution of fever and myalgia without the use of antipyretics OR at least 7 days have passed since symptom onset, whichever is longer.

Total Passenger Count



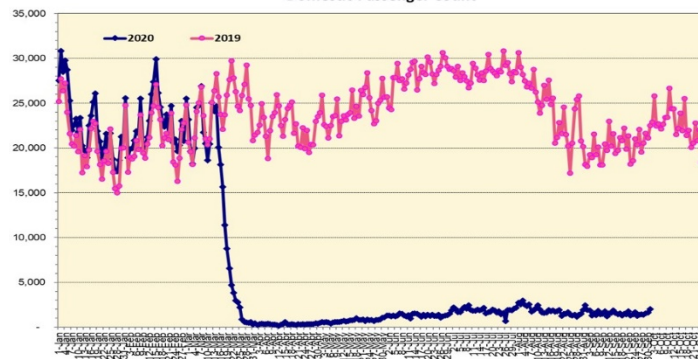
Note: Excludes flights from Canada

International Passenger Count



Note: Excludes flights from Canada

Domestic Passenger Count



Daily Passenger Count Table

10/01/2020	Domestic	International	Total
Oahu	1589	107	1696
Maui	154		154
Island of Hawaii	205		205
Kauai	70		70
State	2018	107	2125

Market Impact Update: <https://www.dropbox.com/10/02/20 HTA COVID19 Update>

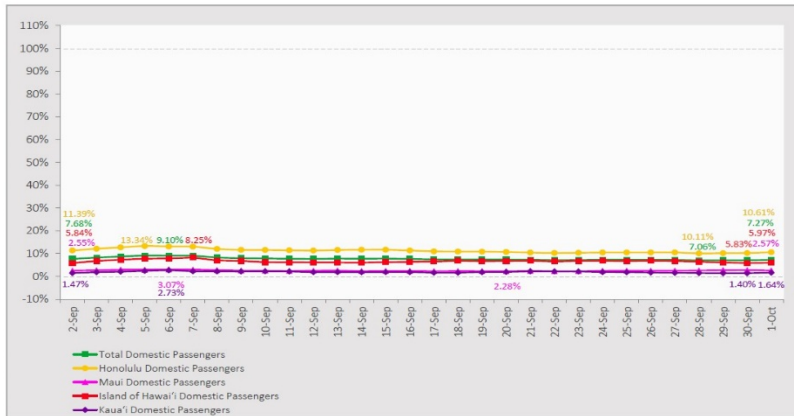
10/01/20 Hawaii Passenger Trans-Pacific Arrivals by Air	Honolulu (HNL)	Kahului (OGG)	Kona (KOA)	Lihue (LIH)	Grand Total
Airline Crew	276	31	14	0	321
Corporate Meeting	1	0	0	0	1
Essential Worker	132	36	22	2	192
Honeymoon	0	1	0	0	1
Intended Resident	188	42	47	11	288
Military or Federal Government	214	5	0	0	219
Other	300	11	10	3	324
Other Business	66	22	24	1	113
Pleasure/Vacation	135	39	30	18	222
Returning Resident	498	80	70	8	656
To Attend School	11	2	6	0	19
Visiting Friends or Relatives	357	47	65	3	472
Transit	N/A	N/A	N/A	N/A	N/A
Grand Total	2,178	316	288	46	2,828

Source: Safe Travels program developed by the State of Hawaii Office of Enterprise Technology Services

Note: The data is preliminary and subject to change

7-Day Domestic by Island Moving Average Daily Passenger Volume

2020 Volume as Percentage of 2019 Volume
Through October 1, 2020



Source: HVCB analysis based on data from DBEDT
Note: Passenger volume figures include both visitors and residents.

Domestic by Island Month-to-Date and Year-to-Date Daily Passenger Volume

2020 Volume versus 2019 Volume
Through October 1, 2020

October 2020 (Month-to-Date through October 1)

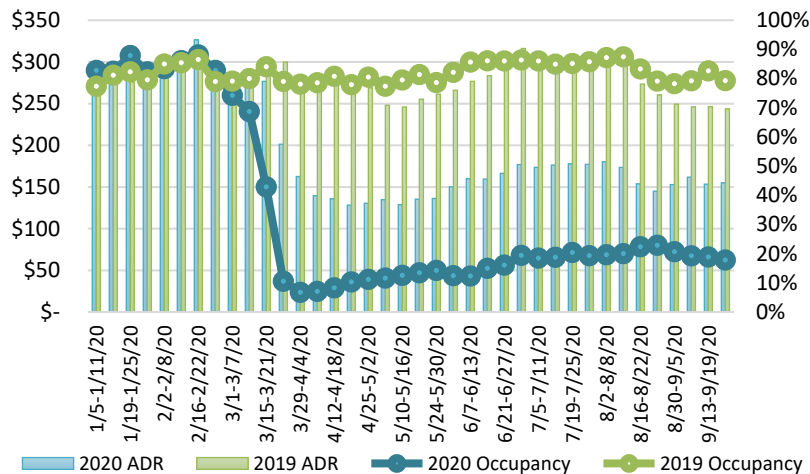
	2020	2019	Volume Change	Percent Change
Honolulu	1,589	12,198	-10,609	-87.0%
Maui County	154	5,731	-5,577	-97.3%
Island of Hawai'i	205	2,072	-1,867	-90.1%
Kaua'i	70	1,638	-1,568	-95.7%
Total	2,018	21,639	-19,621	-90.7%

2020 (Year-to-Date through October 1)

	2020	2019	Volume Change	Percent Change
Honolulu	1,165,867	3,491,448	-2,325,581	-66.6%
Maui County	457,834	1,699,801	-1,241,967	-73.1%
Island of Hawai'i	229,768	755,206	-525,438	-69.6%
Kaua'i	152,136	581,099	-428,963	-73.8%
Total	2,005,604	6,527,554	-4,521,950	-69.3%

Source: HVCB analysis based on data from DBEDT
Note: Passenger volume figures include both visitors and residents. Total includes other international passengers. 2020 includes one additional day due to Leap Year (February 29th, 2020).

State of Hawai'i Hotel Performance by Week - 2020 vs 2019



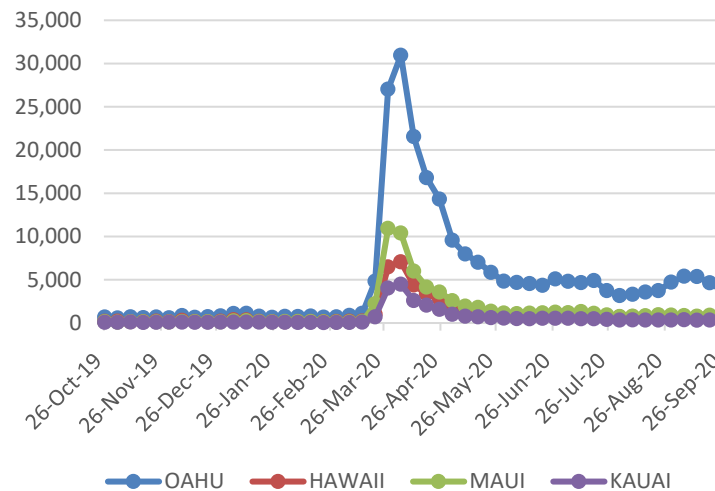
Source: STR, Inc. © Copyright 2020 Hawai'i Tourism Authority

Hawaii Hotel Performance Info:

For the week of September 20 – September 26, 2020

	Occupancy	ADR	RevPAR
State of Hawaii	17.8%	\$ 154.88	\$ 27.60
Oahu	18.2%	\$ 156.00	\$ 28.32
Maui County	15.9%	\$ 166.22	\$ 26.41
Kauai County	15.5%	\$ 156.50	\$ 24.30
Island of Hawaii	21.7%	\$ 134.67	\$ 29.26

2020 Initial Weekly Unemployment Claims by Island



Weekly Unemployment Initial Claims: September 26, 2020

State of Hawaii	5,702
C&C of Oahu	3,717
Hawaii County	775
Maui County	805
Kauai County	289
Agent (filed in Hawaii against another state)	116

News Highlights

October 2, 2020

Honolulu Star Advertiser: [Hawaii hospitals bracing for devastating third wave of virus](#)

Honolulu Star Advertiser: [Cruise ships' return to isles remains in muddy waters](#)

Honolulu Civil Beat: [Hawaii Continues To Line Up Pre-Travel Test Options](#)

Honolulu Civil Beat: [Without Data And Stress-Tested Protocols, It's Foolish To Reopen Hawaii](#)

Pacific Business News: [Mayor Kirk Caldwell talks with PBN about how the reopening tiers were developed](#)

Maui Now: [Doctors On Call Maui Opens a Rapid COVID Testing Center](#)

Hawaii Tribune-Herald: ['Extra layer of security': Lt. Gov. Josh Green details pre-travel testing program](#)

Travel Pulse: [COVID-19 October Travel Restrictions: Latest Quarantine Rules for US States](#)

Business Insider: [A \\$500 restaurant card is being mailed to unemployed people in Hawaii that can be used on food orders — including alcohol and the tip](#)

Helpful Resources

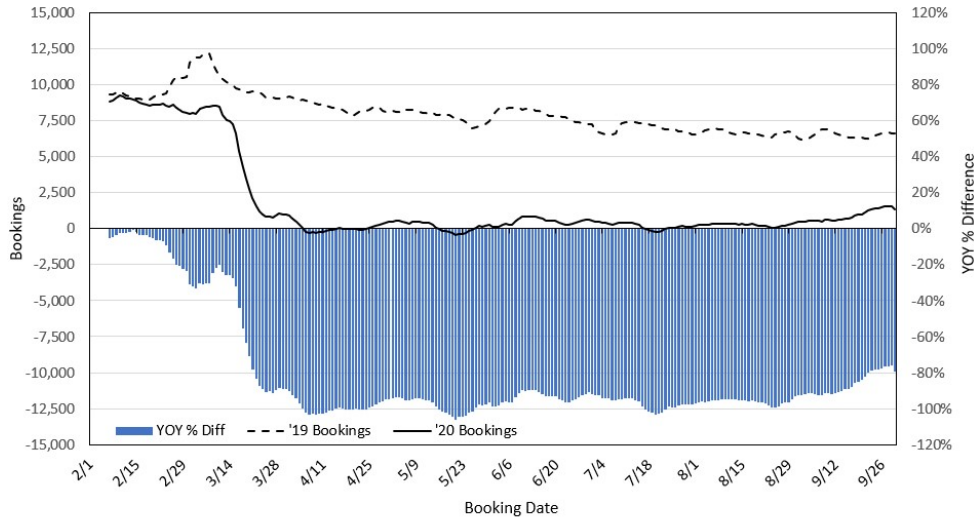
Department of Health
<https://hawaiiocovid19.com/>

Department of Health
<https://health.hawaii.gov/docd/advisories/novel-coronavirus-2019>

Dept. of Business, Economic Development & Tourism
<https://dbedt.hawaii.gov/economic/covid19/>

Department of Transportation
<https://hidot.hawaii.gov/coronavirus/>

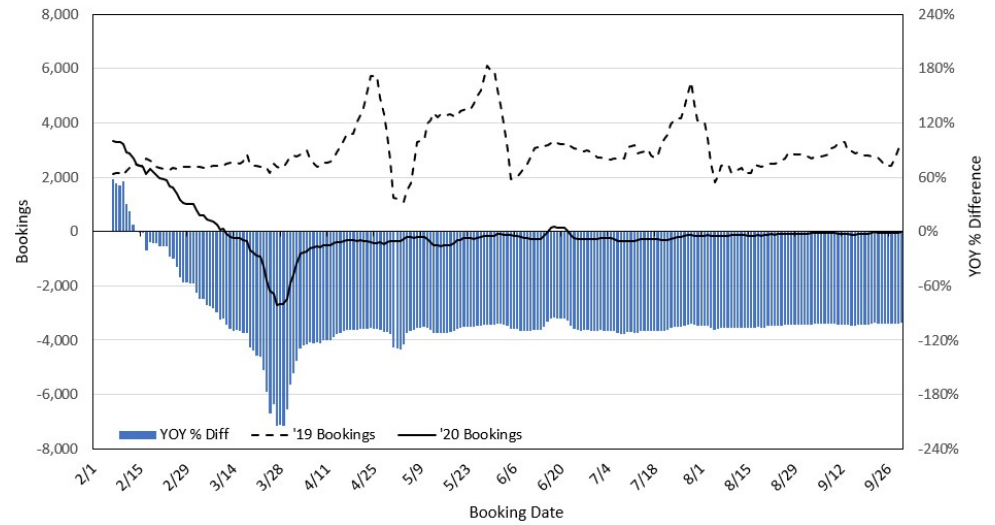
Travel Agency Bookings to Hawaii for Future Arrivals*
Based on a 7-day Moving Average, 2020 vs 2019
U.S.



*Future Arrivals refers to all arrivals that are 'future' relative to the referenced booking date.
 Source: Global Agency Pro

Update: Sep 30, 2020

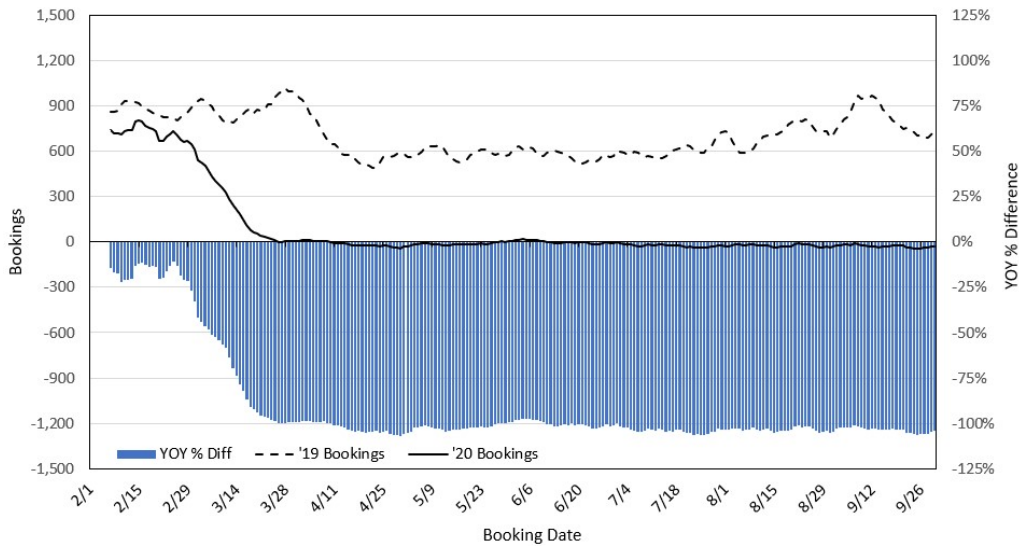
Travel Agency Bookings to Hawaii for Future Arrivals*
Based on a 7-day Moving Average, 2020 vs 2019
Japan



*Future Arrivals refers to all arrivals that are 'future' relative to the referenced booking date.
 Source: Global Agency Pro

Update: Sep 30, 2020

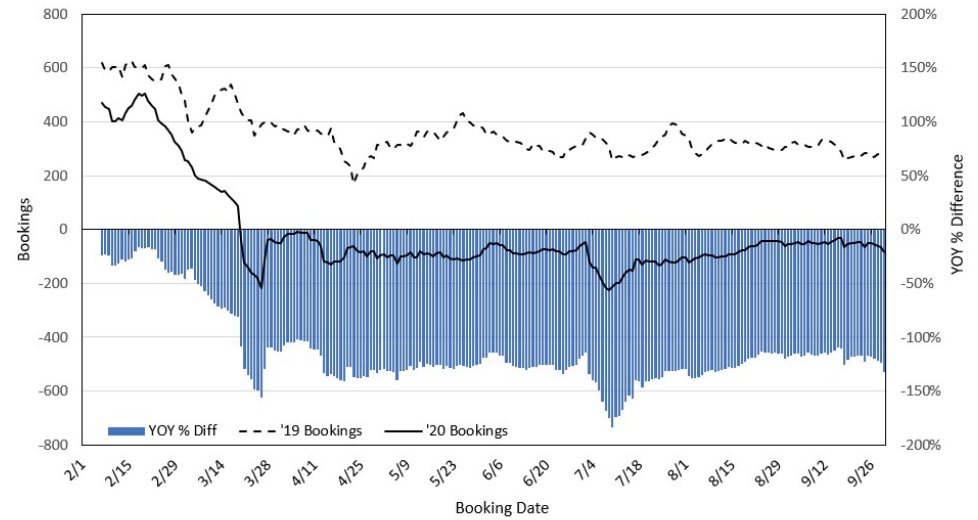
Travel Agency Bookings to Hawaii for Future Arrivals*
Based on a 7-day Moving Average, 2020 vs 2019
Canada



*Future Arrivals refers to all arrivals that are 'future' relative to the referenced booking date.
 Source: Global Agency Pro

Update: Sep 30, 2020

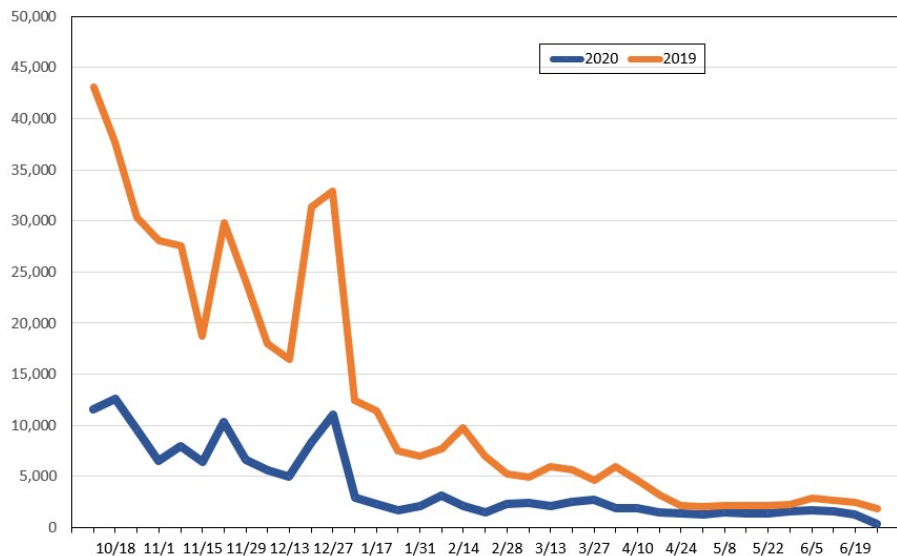
Travel Agency Bookings to Hawaii for Future Arrivals*
Based on a 7-day Moving Average, 2020 vs 2019
Australia



*Future Arrivals refers to all arrivals that are 'future' relative to the referenced booking date.
 Source: Global Agency Pro

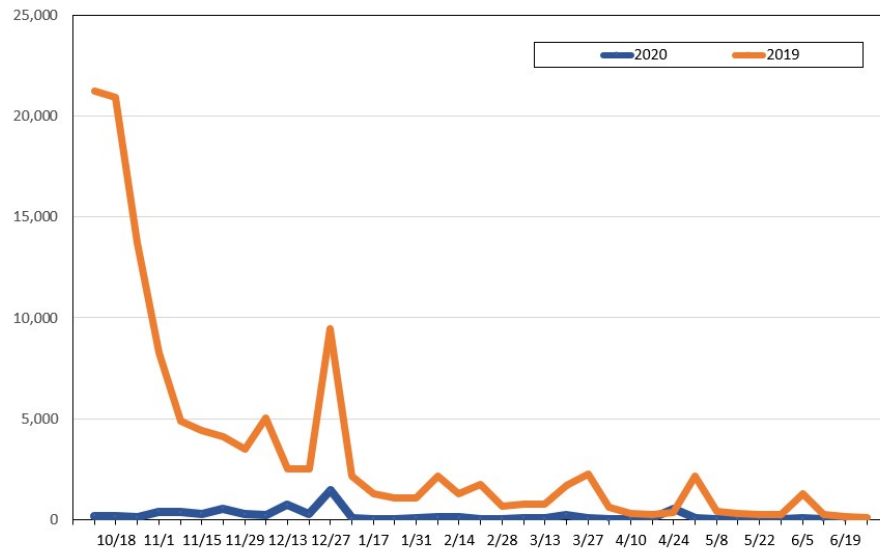
Update: Sep 30, 2020

Travel Agency Weekly Bookings for Future Travel to Hawai'i as of September 30, 2020
U.S.



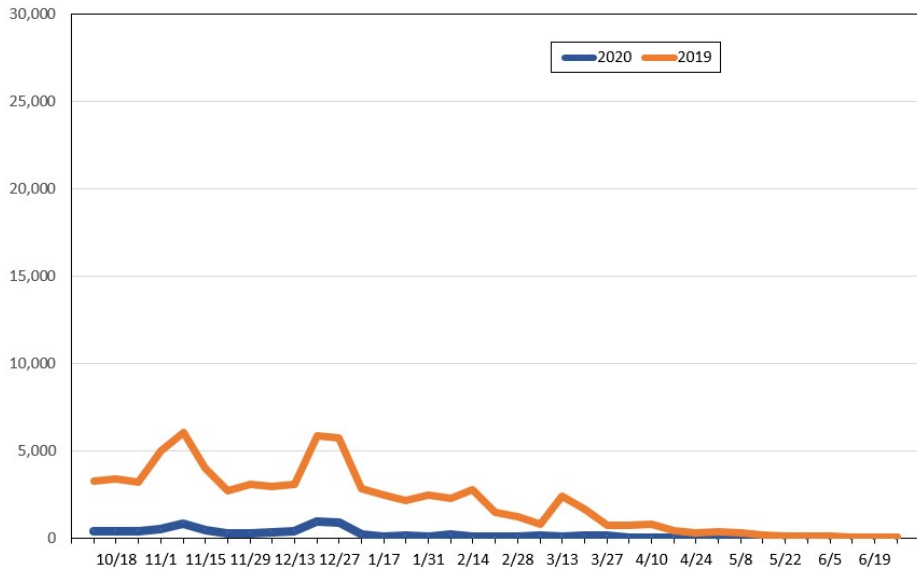
Source: Global Agency Pro, as of September 30, 2020

Travel Agency Weekly Bookings for Future Travel to Hawai'i as of September 30, 2020
Japan



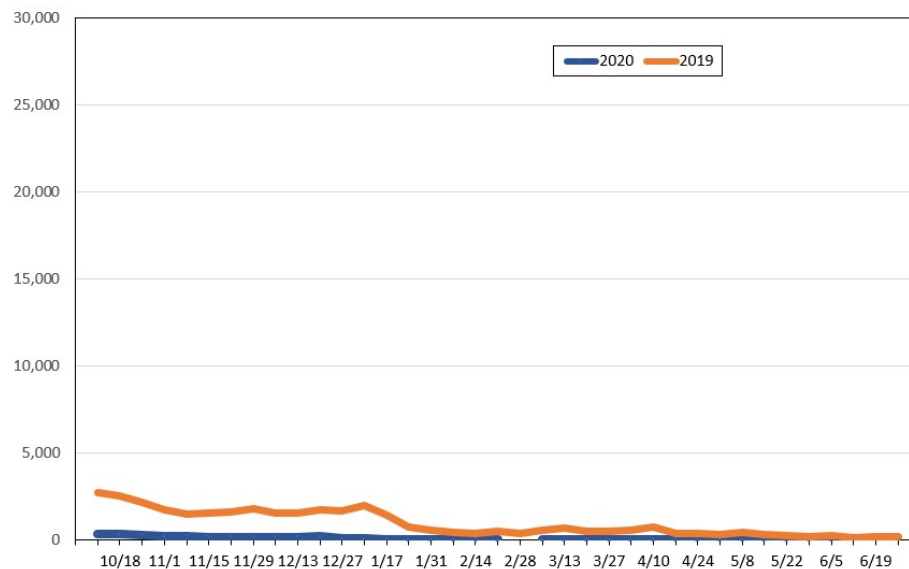
Source: Global Agency Pro, as of September 30, 2020

Travel Agency Weekly Bookings for Future Travel to Hawai'i as of September 30, 2020
Canada



Source: Global Agency Pro, as of September 30, 2020

Travel Agency Weekly Bookings for Future Travel to Hawai'i as of September 30, 2020
Australia



Source: Global Agency Pro, as of September 30, 2020