

# HTA COVID-19 UPDATE

(Issued: 10/5/20 @ 4:00pm)

## Novel Coronavirus in Hawaii

COVID-19 Positive\* Cases

Cumulative totals as of 12:00 noon on October 5, 2020

| Statewide                            | Total           |
|--------------------------------------|-----------------|
| Total Cases                          | 12,854 (52 new) |
| Released from Isolation†             | 10,470          |
| Required Hospitalization             | 889             |
| Deaths                               | 157             |
| BY COUNTY                            | Total           |
| Hawaii County                        |                 |
| Total Cases                          | 820             |
| Released from Isolation†             | 639             |
| Required Hospitalization             | 44              |
| Deaths                               | 15              |
| Honolulu County                      |                 |
| Total Cases                          | 11,546          |
| Released from Isolation†             | 9,412           |
| Required Hospitalization             | 786             |
| Deaths                               | 129             |
| Kauai County                         |                 |
| Total Cases                          | 59              |
| Released from Isolation†             | 57              |
| Required Hospitalization             | 1               |
| Deaths                               | 0               |
| Maui County                          |                 |
| Total Cases                          | 395             |
| Released from Isolation†             | 362             |
| Required Hospitalization             | 56              |
| Deaths                               | 12              |
| HI Residents diagnosed outside of HI | 34              |
| County Pending                       | 0               |

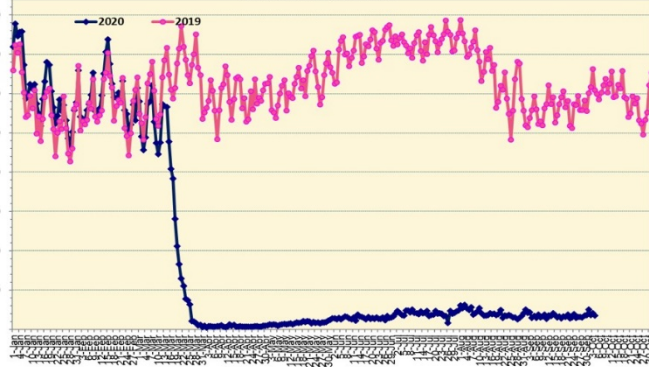
\*includes presumptive and confirmed cases, data are preliminary and subject to change; note that CDC provides case counts according to states of residence.

†Isolation should be maintained until at least 3 days (72 hours) after resolution of fever and myalgia without the use of antipyretics OR at least 7 days have passed since symptom onset, whichever is longer.

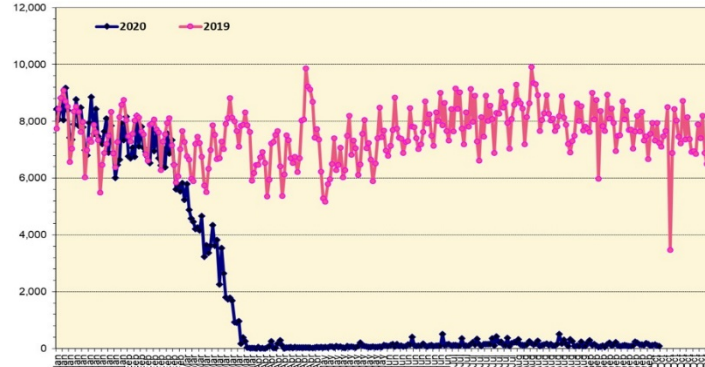
Total Passenger Count

International Passenger Count

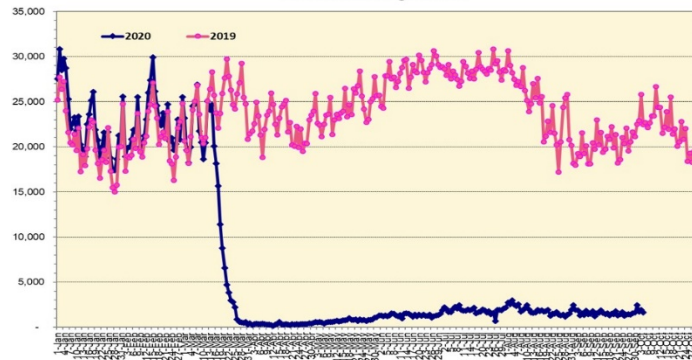
Domestic Passenger Count



Note: Excludes flights from Canada



Note: Excludes flights from Canada



### Daily Passenger Count Table

| 10/04/2020       | Domestic | International | Total |
|------------------|----------|---------------|-------|
| Oahu             | 1355     | 101           | 1456  |
| Maui             | 139      |               | 139   |
| Island of Hawaii | 95       |               | 95    |
| Kauai            | 34       |               | 34    |
| State            | 1623     | 101           | 1724  |

Market Impact Update: <https://www.dropbox.com/10/05/20 HTA COVID19 Update>

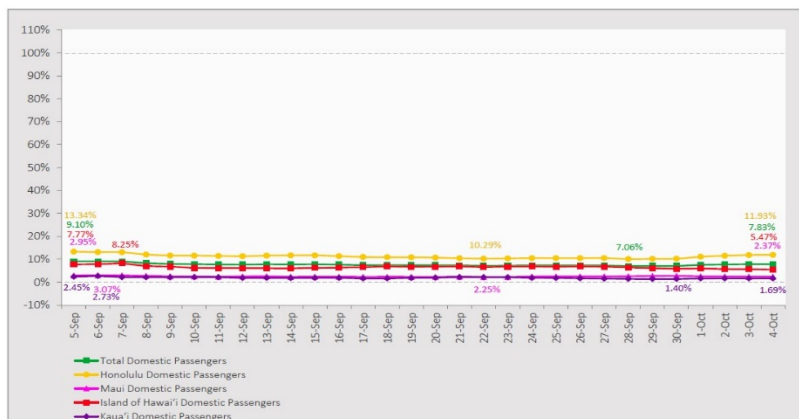
| Reason for Trip by Arrival Airport - Transpacific Screened Passengers as of 10/04/20 | Honolulu (HNL) | Kahului (OGG) | Kona (KOA) | Lihue (LIH) | Grand Total  |
|--|----------------|---------------|------------|-------------|--------------|
| Airline Crew   | 252            | 25            | 15         | 0           | 292          |
| Essential Worker   | 135            | 14            | 10         | 5           | 164          |
| Honeymoon  | 3              | 0             | 2          | 0           | 5            |
| Intended Resident  | 83             | 9             | 8          | 0           | 100          |
| Military or Federal Government   | 128            | 0             | 0          | 1           | 129          |
| Other  | 146            | 9             | 0          | 2           | 157          |
| Other Business   | 61             | 16            | 12         | 5           | 94           |
| Pleasure/Vacation  | 58             | 19            | 12         | 0           | 89           |
| Returning Resident   | 478            | 56            | 43         | 8           | 585          |
| To Attend School   | 4              | 0             | 0          | 0           | 4            |
| To Get Married   | 1              | 0             | 0          | 0           | 1            |
| Visiting Friends or Relatives  | 220            | 21            | 23         | 2           | 266          |
| Transit  | N/A            | N/A           | N/A        | N/A         | N/A          |
| <b>Grand Total</b>   | <b>1,569</b>   | <b>169</b>    | <b>125</b> | <b>23</b>   | <b>1,886</b> |

Source: Safe Travels program developed by the State of Hawaii Office of Enterprise Technology Services

Note: The data is preliminary and subject to change

### 7-Day Domestic by Island Moving Average Daily Passenger Volume

2020 Volume as Percentage of 2019 Volume  
Through October 4, 2020



Source: HVCB analysis based on data from DBEDT  
Note: Passenger volume figures include both visitors and residents.

### Domestic by Island Month-to-Date and Year-to-Date Daily Passenger Volume

2020 Volume versus 2019 Volume  
Through October 4, 2020

October 2020 (Month-to-Date through October 4)

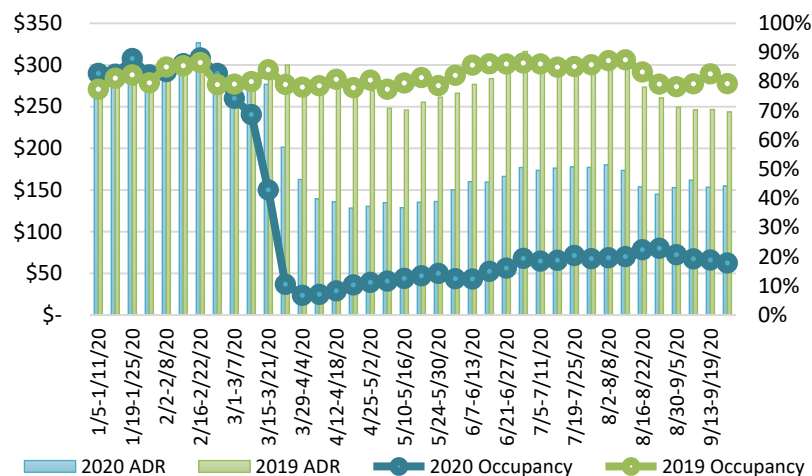
|                   | 2020         | 2019          | Volume Change  | Percent Change |
|-------------------|--------------|---------------|----------------|----------------|
| Honolulu          | 6,376        | 48,431        | -42,055        | -86.8%         |
| Maui County       | 548          | 23,698        | -23,150        | -97.7%         |
| Island of Hawai'i | 568          | 8,809         | -8,241         | -93.6%         |
| Kaua'i            | 182          | 7,225         | -7,043         | -97.5%         |
| <b>Total</b>      | <b>7,674</b> | <b>88,163</b> | <b>-80,489</b> | <b>-91.3%</b>  |

2020 (Year-to-Date through October 4)

|                   | 2020             | 2019             | Volume Change     | Percent Change |
|-------------------|------------------|------------------|-------------------|----------------|
| Honolulu          | 1,170,654        | 3,527,681        | -2,357,027        | -66.8%         |
| Maui County       | 458,228          | 1,717,768        | -1,259,541        | -73.3%         |
| Island of Hawai'i | 230,131          | 761,943          | -531,812          | -69.8%         |
| Kaua'i            | 152,248          | 586,686          | -434,438          | -74.0%         |
| <b>Total</b>      | <b>2,011,261</b> | <b>6,594,078</b> | <b>-4,582,818</b> | <b>-69.5%</b>  |

Source: HVCB analysis based on data from DBEDT  
Note: Passenger volume figures include both visitors and residents. Total includes other international passengers. 2020 includes one additional day due to Leap Year (February 29th, 2020).

### State of Hawai'i Hotel Performance by Week - 2020 vs 2019



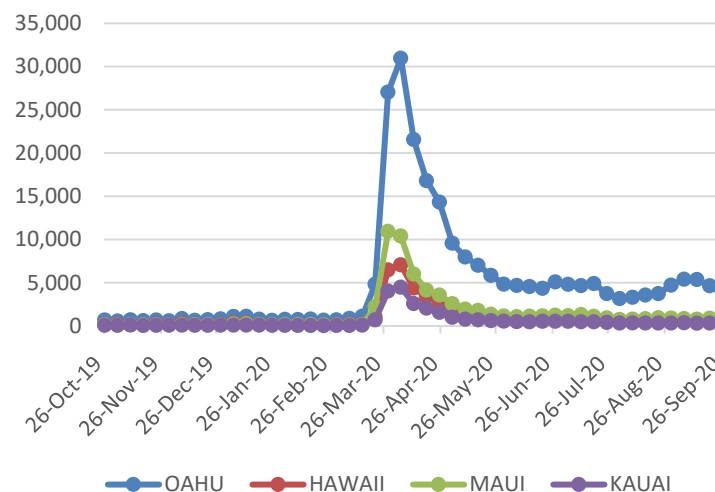
Source: STR, Inc. © Copyright 2020 Hawai'i Tourism Authority

### Hawaii Hotel Performance Info:

For the week of September 20 – September 26, 2020

|                         | Occupancy | ADR       | RevPAR   |
|-------------------------|-----------|-----------|----------|
| <b>State of Hawaii</b>  | 17.8%     | \$ 154.88 | \$ 27.60 |
| <b>Oahu</b>             | 18.2%     | \$ 156.00 | \$ 28.32 |
| <b>Maui County</b>      | 15.9%     | \$ 166.22 | \$ 26.41 |
| <b>Kauai County</b>     | 15.5%     | \$ 156.50 | \$ 24.30 |
| <b>Island of Hawaii</b> | 21.7%     | \$ 134.67 | \$ 29.26 |

### 2020 Initial Weekly Unemployment Claims by Island



### Weekly Unemployment Initial Claims: September 26, 2020

|  |       |
|--|-------|
| <b>State of Hawaii</b>                               | 5,702 |
| <b>C&amp;C of Oahu</b>                               | 3,717 |
| <b>Hawaii County</b>                                 | 775   |
| <b>Maui County</b>                                   | 805   |
| <b>Kauai County</b>                                  | 289   |
| <b>Agent (filed in Hawaii against another state)</b> | 116   |

## News Highlights

October 5, 2020

**Honolulu Star Advertiser:** [Tourism restart for Hawaii may delay Tier 2](#)

**KHON2:** [CVS offers appointments for coronavirus testing starting Oct. 10](#)

**KHON2:** [Some question enforcement with thousands of daily travelers expected](#)

**Hawaii News Now:** [Kauai mayor asks governor for OK to require second COVID-19 test of all arrivals](#)

**Hawaii News Now:** [Carnival cancels most 2020 US cruises, including those to Hawaii](#)

**Hawaii Public Radio:** [Lt. Gov. Defends Pre-Travel Testing Program, Says 2nd Test Not Feasible](#)

**Hawaii Tribune-Herald:** [Hawaii Island posts largest single-day jump in new COVID-19 cases](#)

**Travel Pulse:** [Hawaii Preparing for Influx of Visitors When Restrictions Are Lifted](#)

**Conde Nast Traveler:** [State Travel Restrictions During COVID-19: A Complete Guide](#)

#### Helpful Resources

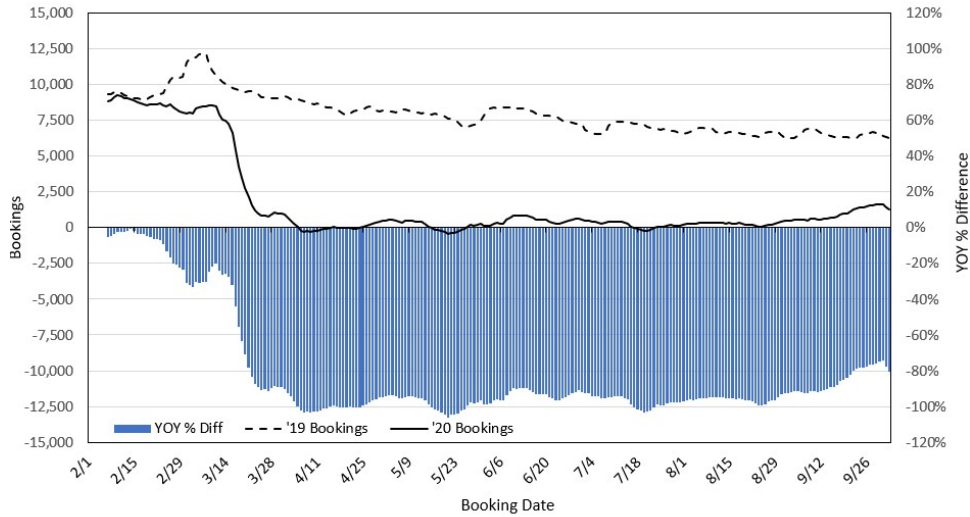
Department of Health  
<https://hawaiiocovid19.com/>

Department of Health  
<https://health.hawaii.gov/docd/advisories/novel-coronavirus-2019>

Dept. of Business, Economic Development & Tourism  
<https://dbedt.hawaii.gov/economic/covid19/>

Department of Transportation  
<https://hidot.hawaii.gov/coronavirus/>

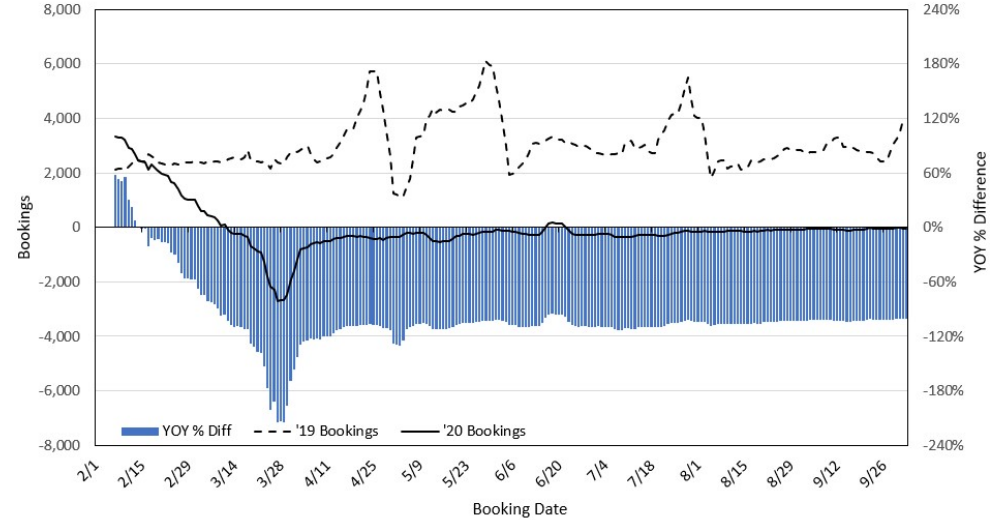
**Travel Agency Bookings to Hawaii for Future Arrivals\***  
**Based on a 7-day Moving Average, 2020 vs 2019**  
**U.S.**



\*Future Arrivals refers to all arrivals that are 'future' relative to the referenced booking date.  
 Source: Global Agency Pro

Update: Oct 3, 2020

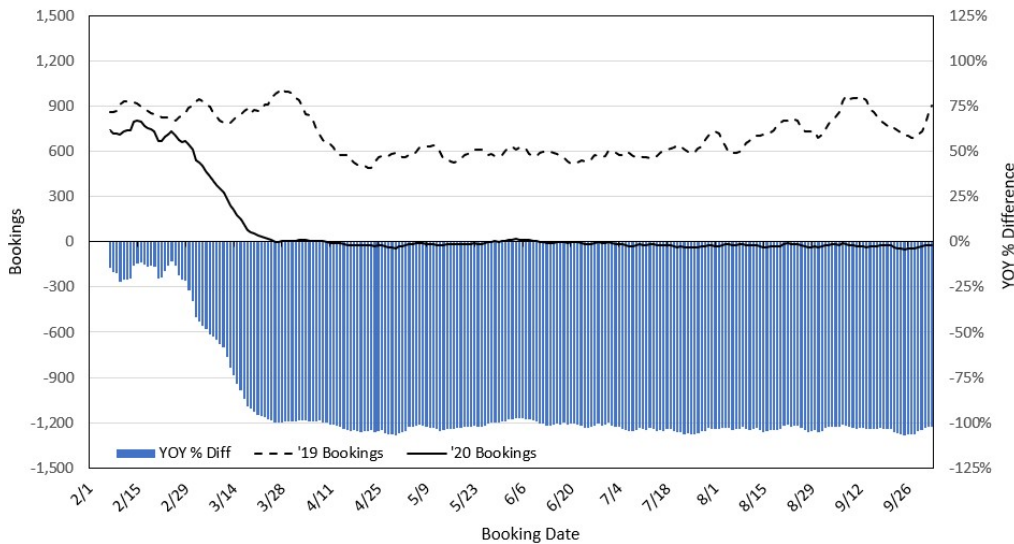
**Travel Agency Bookings to Hawaii for Future Arrivals\***  
**Based on a 7-day Moving Average, 2020 vs 2019**  
**Japan**



\*Future Arrivals refers to all arrivals that are 'future' relative to the referenced booking date.  
 Source: Global Agency Pro

Update: Oct 3, 2020

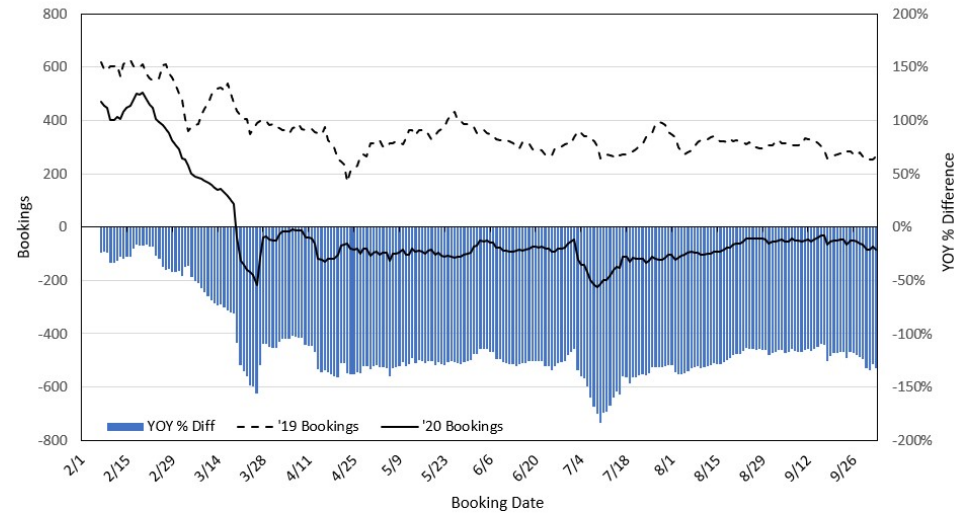
**Travel Agency Bookings to Hawaii for Future Arrivals\***  
**Based on a 7-day Moving Average, 2020 vs 2019**  
**Canada**



\*Future Arrivals refers to all arrivals that are 'future' relative to the referenced booking date.  
 Source: Global Agency Pro

Update: Oct 3, 2020

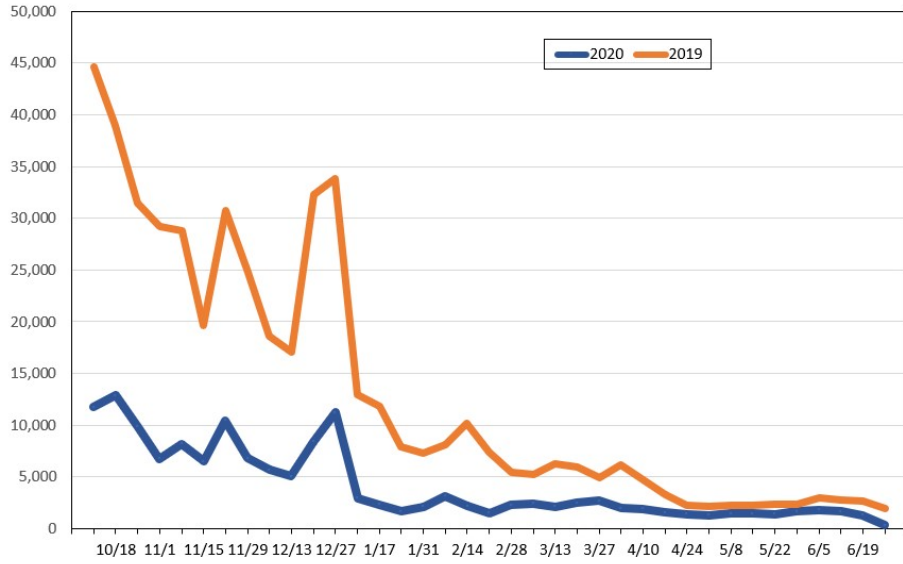
**Travel Agency Bookings to Hawaii for Future Arrivals\***  
**Based on a 7-day Moving Average, 2020 vs 2019**  
**Australia**



\*Future Arrivals refers to all arrivals that are 'future' relative to the referenced booking date.  
 Source: Global Agency Pro

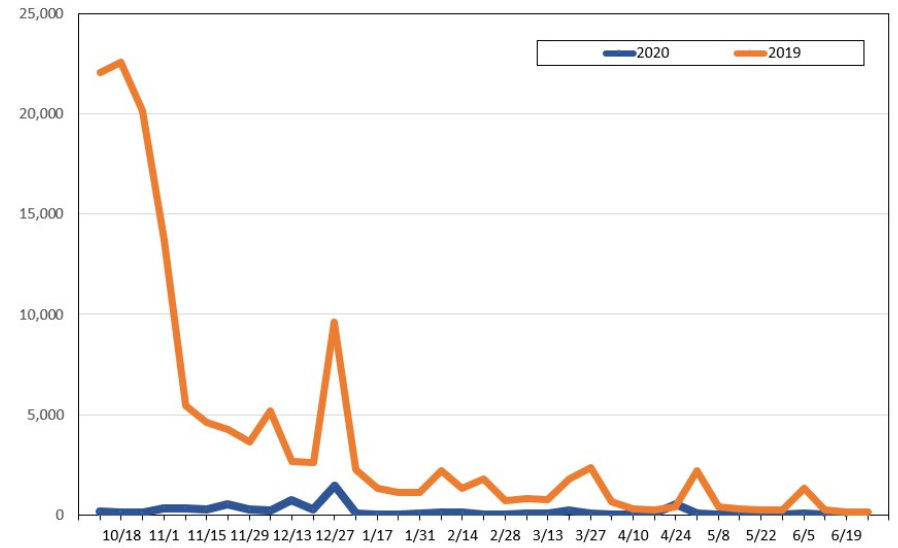
Update: Oct 3, 2020

**Travel Agency Weekly Bookings for Future Travel to Hawai'i as of October 3, 2020**  
U.S.



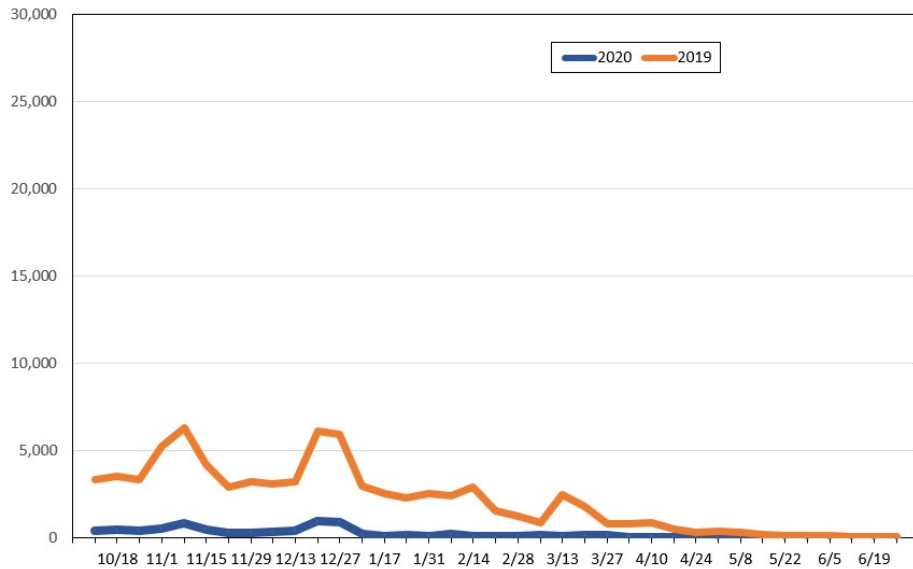
Source: Global Agency Pro, as of October 3, 2020

**Travel Agency Weekly Bookings for Future Travel to Hawai'i as of October 3, 2020**  
Japan



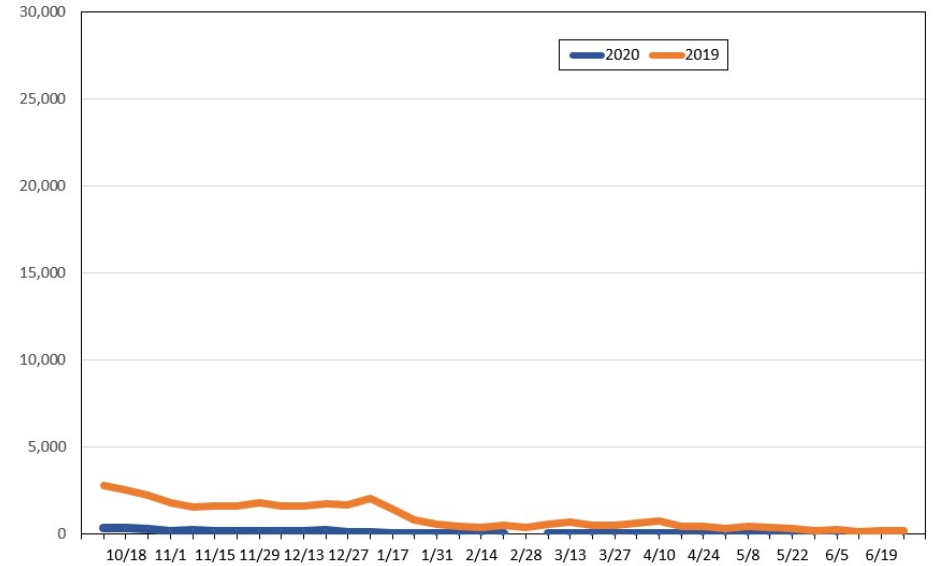
Source: Global Agency Pro, as of October 3, 2020

**Travel Agency Weekly Bookings for Future Travel to Hawai'i as of October 3, 2020**  
Canada



Source: Global Agency Pro, as of October 3, 2020

**Travel Agency Weekly Bookings for Future Travel to Hawai'i as of October 3, 2020**  
Australia



Source: Global Agency Pro, as of October 3, 2020