

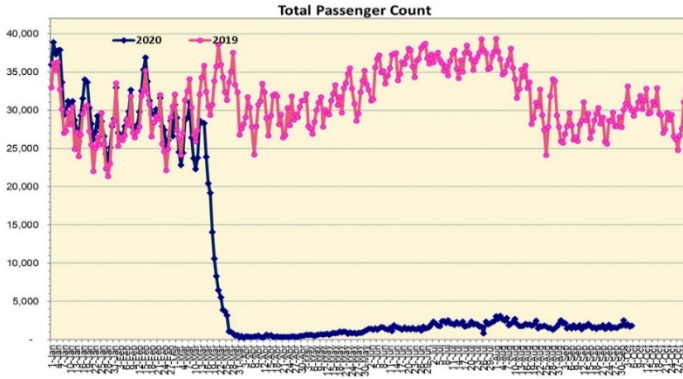
HTA COVID-19 UPDATE

(Issued: 10/6/20 @ 4:00pm)

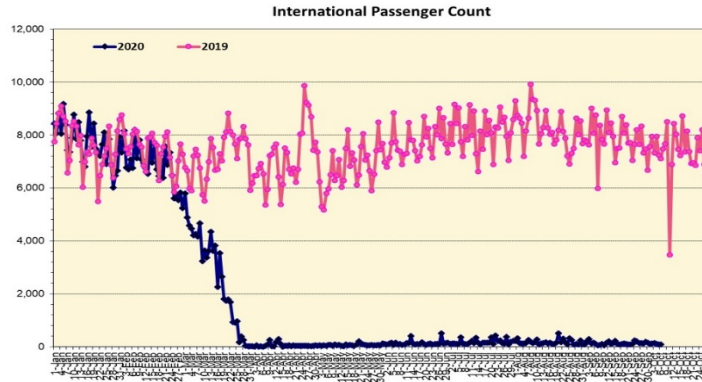
Novel Coronavirus in Hawaii

COVID-19 Positive* Cases

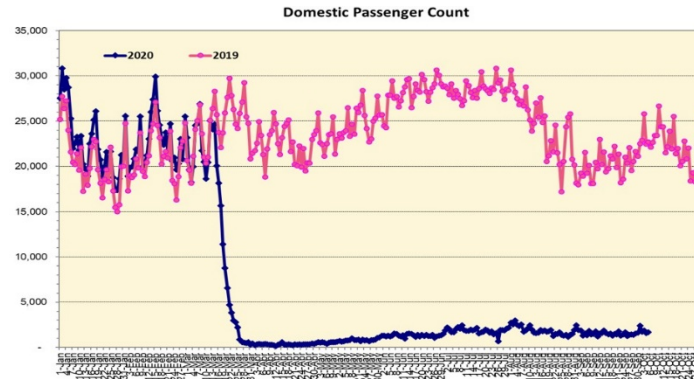
Cumulative totals as of 12:00 noon on October 6, 2020



Note: Excludes flights from Canada



Note: Excludes flights from Canada



Daily Passenger Count Table

10/05/2020	Domestic	International	Total
Oahu	1487	91	1578
Maui	139		139
Island of Hawaii	76		76
Kauai	0		0
State	1702	91	1793

Market Impact Update: <https://www.dropbox.com/10/06/20 HTA COVID19 Update>

Reason for Trip by Arrival Airport - Transpacific Screened Passengers as of 10/05/20	Honolulu (HNL)	Kahului (OGG)	Kona (KOA)	Lihue (LIH)	Grand Total
Airline Crew	266	23	12	0	301
Corporate Meeting	2	0	0	0	2
Essential Worker	119	24	16	7	166
Honeymoon	2	0	0	0	2
Incentive Trip	2	0	0	0	2
Intended Resident	114	28	15	6	163
Military or Federal Government	135	2	0	1	138
Other	163	4	0	0	167
Other Business	65	25	7	2	99
Pleasure/Vacation	50	5	3	0	58
Returning Resident	527	81	42	4	654
Sports Event	3	0	0	0	3
To Attend School	2	2	1	0	5
To Get Married	1	0	0	0	1
Visiting Friends or Relatives	212	23	19	2	256
Transit	N/A	N/A	N/A	N/A	N/A
Grand Total	1,663	217	115	22	2,017

Source: Safe Travels program developed by the State of Hawaii Office of Enterprise Technology Services

Note: The data is preliminary and subject to change

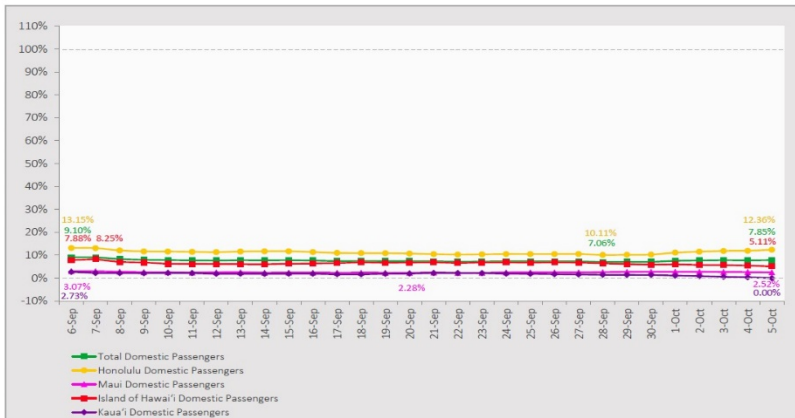
Statewide	Total
Total Cases	12,937 (83 new)
Released from Isolation+	10,562
Required Hospitalization	889
Deaths	160
BY COUNTY	Total
Hawaii County	
Total Cases	834
Released from Isolation+	648
Required Hospitalization	44
Deaths	15
Honolulu County	
Total Cases	11,613
Released from Isolation+	9,458
Required Hospitalization	786
Deaths	132
Kauai County	
Total Cases	59
Released from Isolation+	58
Required Hospitalization	1
Deaths	0
Maui County	
Total Cases	397
Released from Isolation+	362
Required Hospitalization	56
Deaths	12
HI Residents diagnosed outside of HI	34
County Pending	0

*includes presumptive and confirmed cases, data are preliminary and subject to change; note that CDC provides case counts according to states of residence.

+Isolation should be maintained until at least 3 days (72 hours) after resolution of fever and myalgia without the use of antipyretics OR at least 7 days have passed since symptom onset, whichever is longer.

7-Day Domestic by Island Moving Average Daily Passenger Volume

2020 Volume as Percentage of 2019 Volume
Through October 5, 2020



Source: HVCB analysis based on data from DBEDT
Note: Passenger volume figures include both visitors and residents.

Domestic by Island Month-to-Date and Year-to-Date Daily Passenger Volume

2020 Volume versus 2019 Volume
Through October 5, 2020

October 2020 (Month-to-Date through October 5)

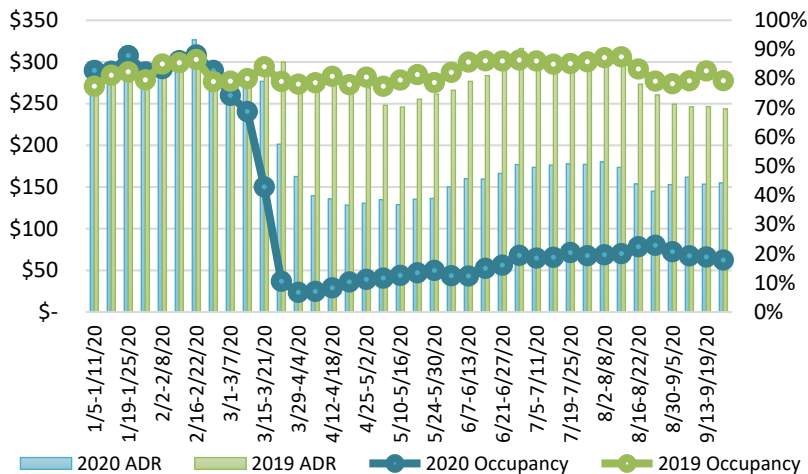
	2020	2019	Volume Change	Percent Change
Honolulu	7,863	61,209	-53,346	-87.2%
Maui County	789	31,155	-30,366	-97.5%
Island of Hawai'i	644	11,686	-11,042	-94.5%
Kaua'i	0	9,893	-9,893	-100.0%
Total	9,296	113,943	-104,647	-91.8%

2020 (Year-to-Date through October 5)

	2020	2019	Volume Change	Percent Change
Honolulu	1,172,141	3,540,459	-2,368,318	-66.9%
Maui County	458,469	1,725,225	-1,266,756	-73.4%
Island of Hawai'i	230,207	764,820	-534,613	-69.9%
Kaua'i	152,064	589,354	-437,290	-74.2%
Total	2,012,881	6,619,858	-4,606,978	-69.6%

Source: HVCB analysis based on data from DBEDT
Note: Passenger volume figures include both visitors and residents. Total includes other international passengers. 2020 includes one additional day due to Leap Year (February 29th, 2020).

State of Hawai'i Hotel Performance by Week - 2020 vs 2019



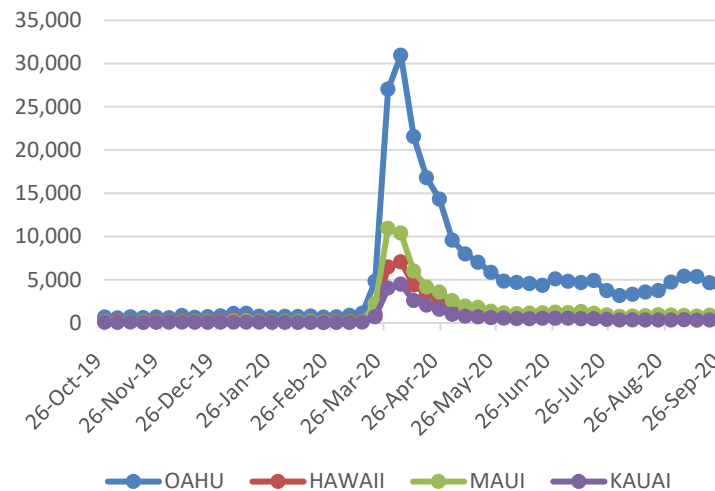
Source: STR, Inc. © Copyright 2020 Hawai'i Tourism Authority

Hawaii Hotel Performance Info:

For the week of September 20 – September 26, 2020

	Occupancy	ADR	RevPAR
State of Hawaii	17.8%	\$ 154.88	\$ 27.60
Oahu	18.2%	\$ 156.00	\$ 28.32
Maui County	15.9%	\$ 166.22	\$ 26.41
Kauai County	15.5%	\$ 156.50	\$ 24.30
Island of Hawaii	21.7%	\$ 134.67	\$ 29.26

2020 Initial Weekly Unemployment Claims by Island



Weekly Unemployment Initial Claims: September 26, 2020

State of Hawaii	5,702
C&C of Oahu	3,717
Hawaii County	775
Maui County	805
Kauai County	289
Agent (filed in Hawaii against another state)	116

News Highlights

October 6, 2020

Honolulu Star Advertiser: [Big Island opts out of pre-travel testing program](#)

Hawaii News Now: [As tourism's relaunch nears, details of traveler testing program still being hammered out](#)

Hawaii News Now: [Business Report: More layoffs for Hawaii's hotel industry](#)

Hawaii News Now: [Green: Second COVID-19 test not necessary for trans-Pacific travelers](#)

Hawaii News Now: [Ige denies Kauai's request to require second negative COVID-19 test for travelers](#)

KHON2: [Hawaii County tries to contain two virus clusters](#)

KHON2: [Hawaii tourist attractions plan to reopen with more visitors expected](#)

KITV4: [Maui mayor supports the idea of post-arrival testing](#)

Hawaii Magazine: [What You Need To Know If You're Traveling To Hawaii Now](#)

CNN: [Only 4 states are reporting a decline in Covid-19 cases](#)

Helpful Resources

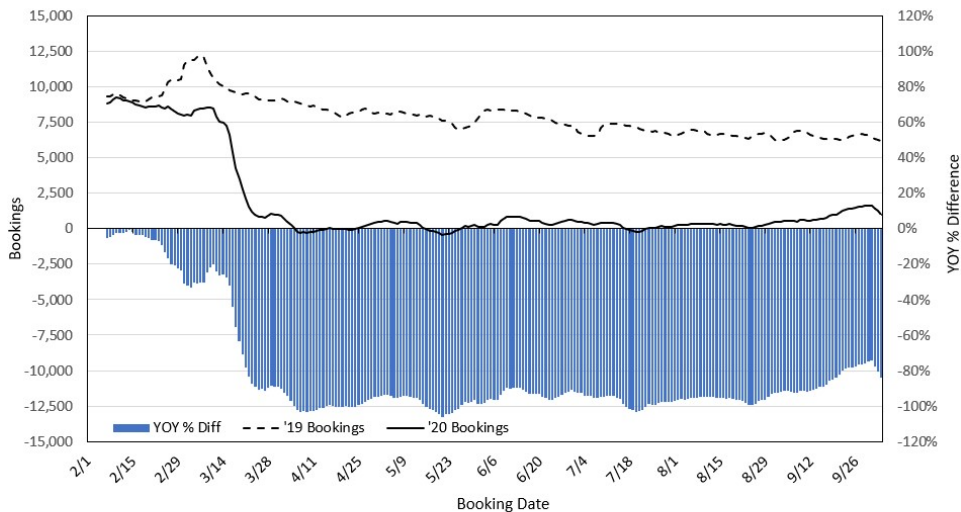
Department of Health
<https://hawaiiocovid19.com/>

Department of Health
<https://health.hawaii.gov/docd/advisories/novel-coronavirus-2019>

Dept. of Business, Economic Development & Tourism
<https://dbedt.hawaii.gov/economic/covid19/>

Department of Transportation
<https://hidot.hawaii.gov/coronavirus/>

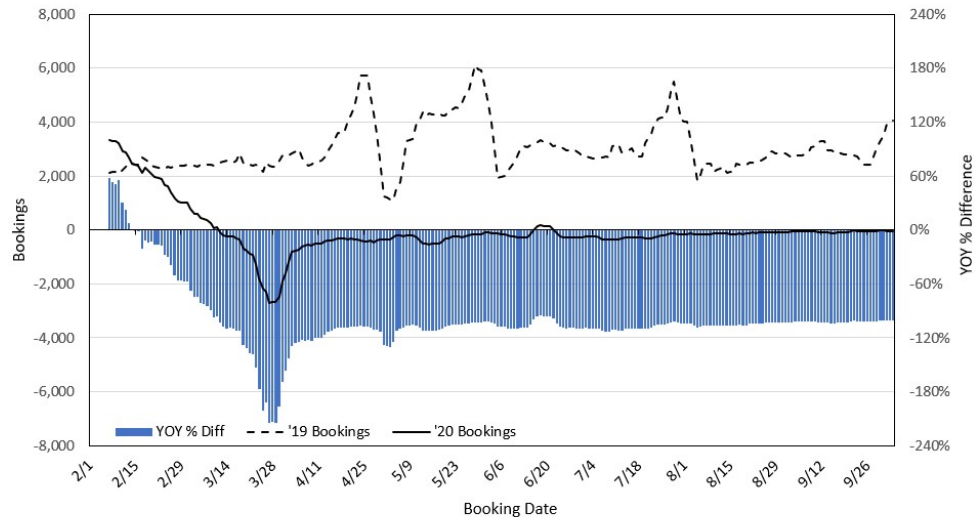
**Travel Agency Bookings to Hawaii for Future Arrivals*
Based on a 7-day Moving Average, 2020 vs 2019
U.S.**



*Future Arrivals refers to all arrivals that are 'future' relative to the referenced booking date.
Source: Global Agency Pro

Update: Oct 4, 2020

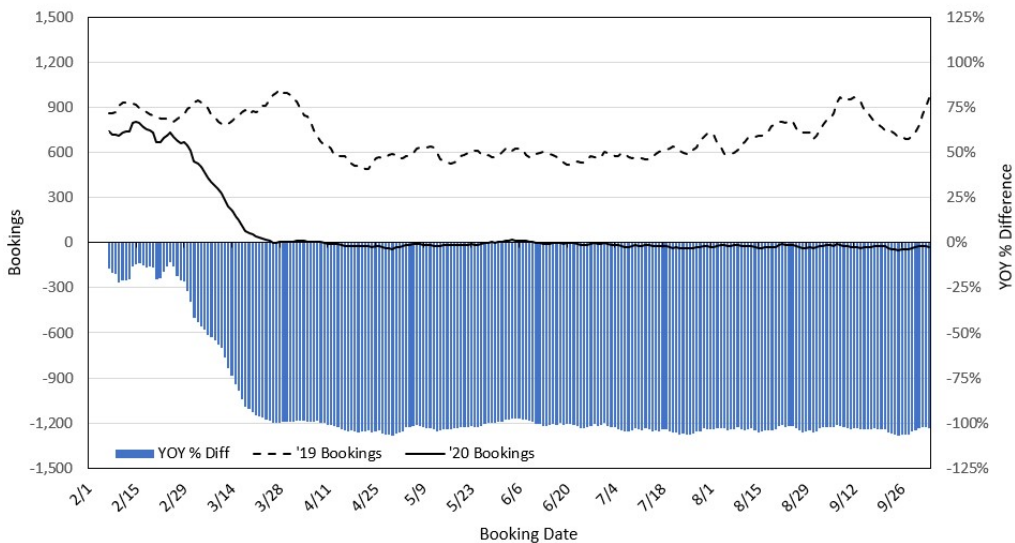
**Travel Agency Bookings to Hawaii for Future Arrivals*
Based on a 7-day Moving Average, 2020 vs 2019
Japan**



*Future Arrivals refers to all arrivals that are 'future' relative to the referenced booking date.
Source: Global Agency Pro

Update: Oct 4, 2020

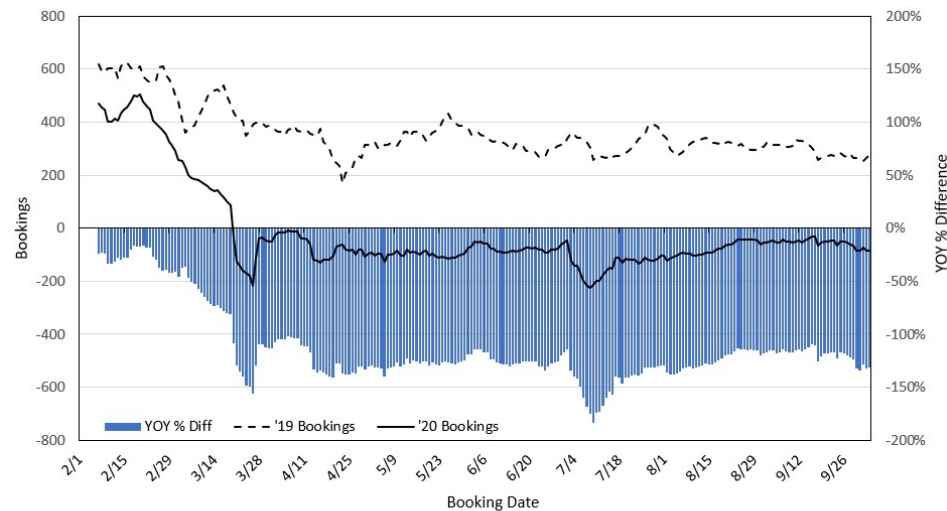
**Travel Agency Bookings to Hawaii for Future Arrivals*
Based on a 7-day Moving Average, 2020 vs 2019
Canada**



*Future Arrivals refers to all arrivals that are 'future' relative to the referenced booking date.
Source: Global Agency Pro

Update: Oct 4, 2020

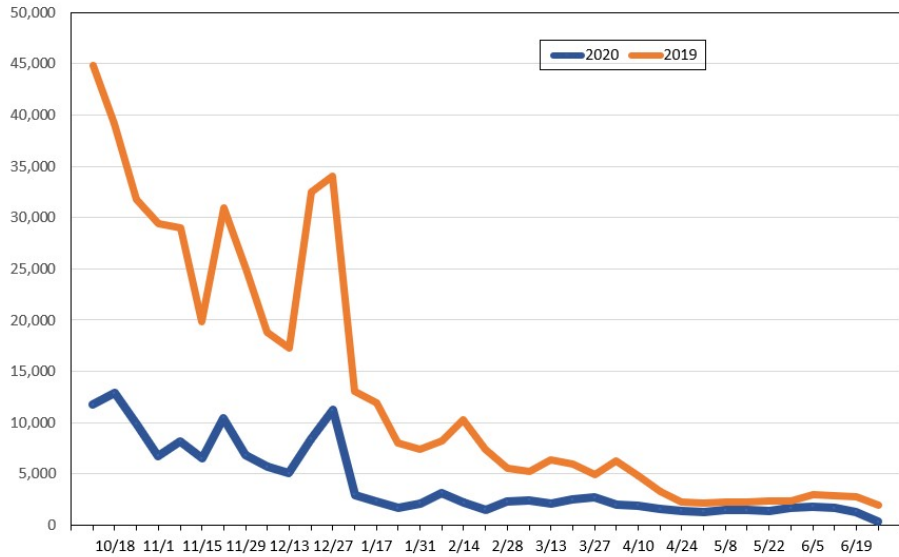
**Travel Agency Bookings to Hawaii for Future Arrivals*
Based on a 7-day Moving Average, 2020 vs 2019
Australia**



*Future Arrivals refers to all arrivals that are 'future' relative to the referenced booking date.
Source: Global Agency Pro

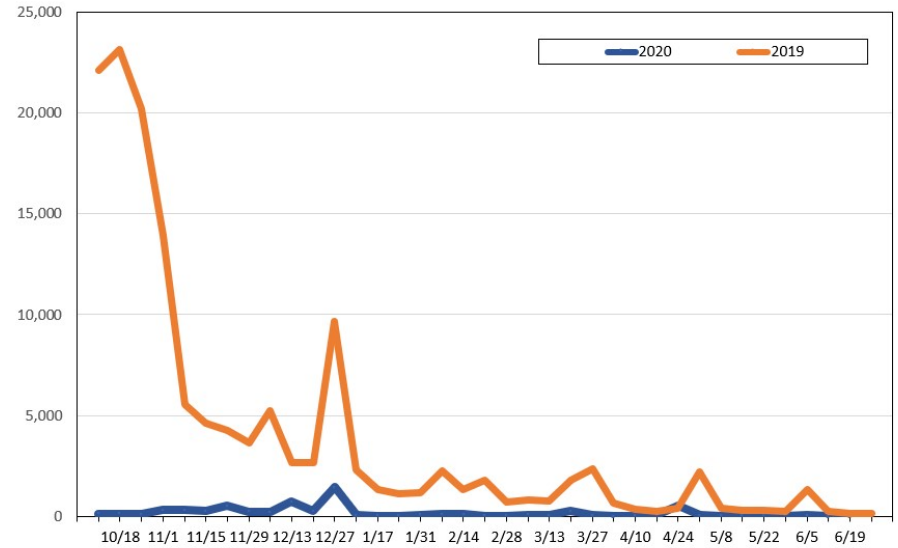
Update: Oct 4, 2020

Travel Agency Weekly Bookings for Future Travel to Hawai'i as of October 4, 2020
U.S.



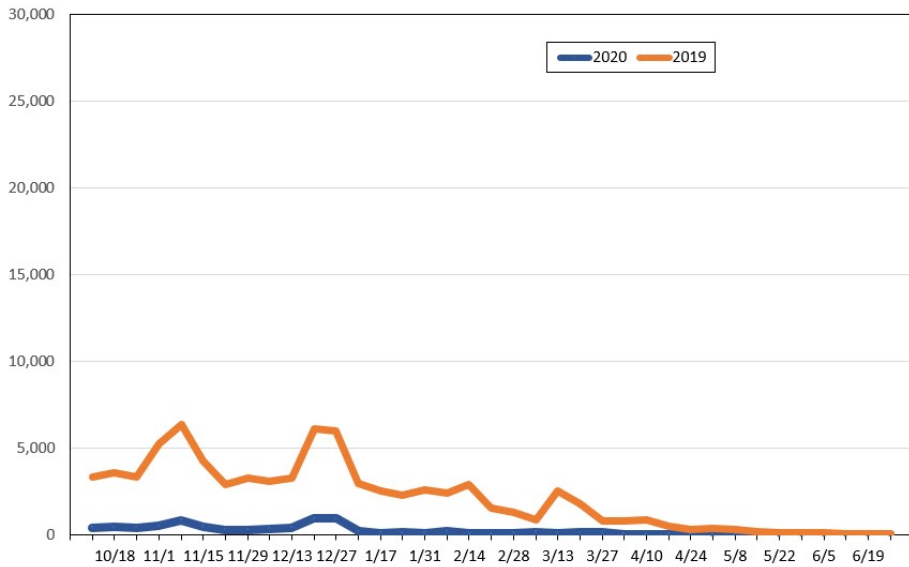
Source: Global Agency Pro, as of October 4, 2020

Travel Agency Weekly Bookings for Future Travel to Hawai'i as of October 4, 2020
Japan



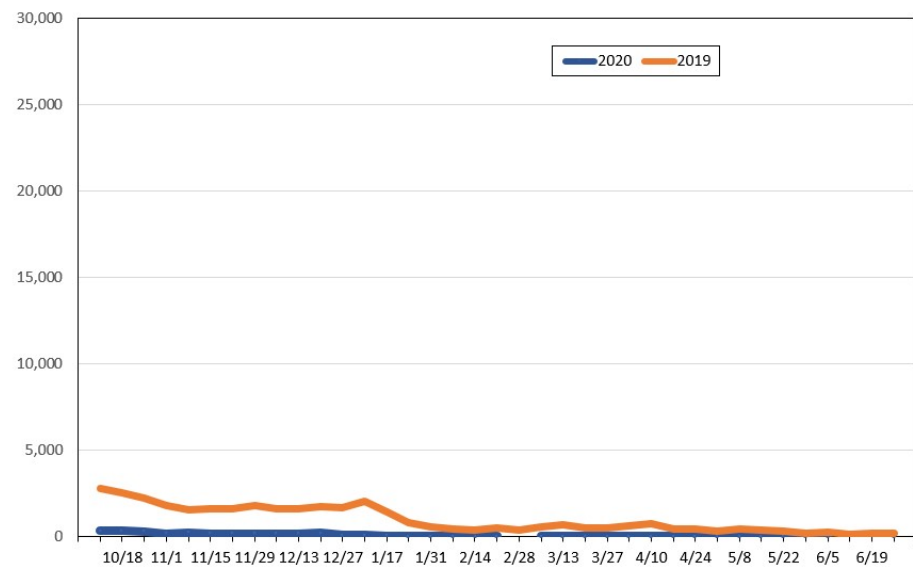
Source: Global Agency Pro, as of October 4, 2020

Travel Agency Weekly Bookings for Future Travel to Hawai'i as of October 4, 2020
Canada



Source: Global Agency Pro, as of October 4, 2020

Travel Agency Weekly Bookings for Future Travel to Hawai'i as of October 4, 2020
Australia



Source: Global Agency Pro, as of October 4, 2020