

HTA COVID-19 UPDATE

(Issued: 10/8/20 @ 4:00pm)

Novel Coronavirus in Hawaii

COVID-19 Positive* Cases

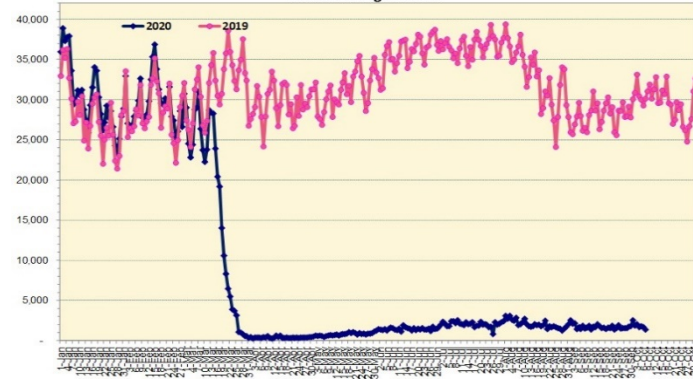
Cumulative totals as of 12:00 noon on October 8, 2020

Statewide	Total
Total Cases	13,146 (101 new)
Released from Isolation†	10,604
Required Hospitalization	900
Deaths	164
BY COUNTY	Total
Hawaii County	
Total Cases	866
Released from Isolation†	663
Required Hospitalization	47
Deaths	15
Honolulu County	
Total Cases	11,788
Released from Isolation†	9,520
Required Hospitalization	794
Deaths	136
Kauai County	
Total Cases	59
Released from Isolation†	58
Required Hospitalization	1
Deaths	0
Maui County	
Total Cases	397
Released from Isolation†	363
Required Hospitalization	56
Deaths	12
HI Residents diagnosed outside of HI	36
County Pending	0

*includes presumptive and confirmed cases, data are preliminary and subject to change; note that CDC provides case counts according to states of residence.

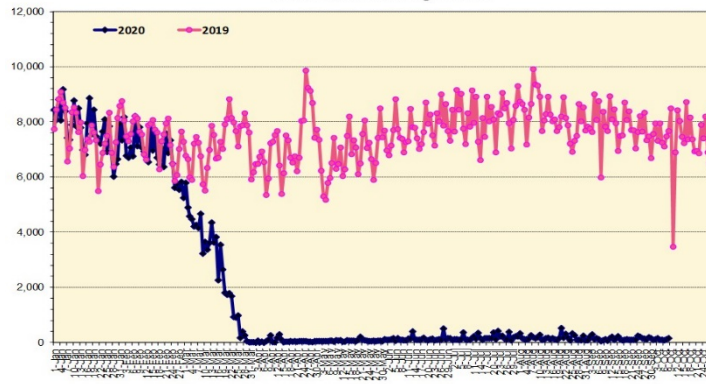
†Isolation should be maintained until at least 3 days (72 hours) after resolution of fever and myalgia without the use of antipyretics OR at least 7 days have passed since symptom onset, whichever is longer.

Total Passenger Count



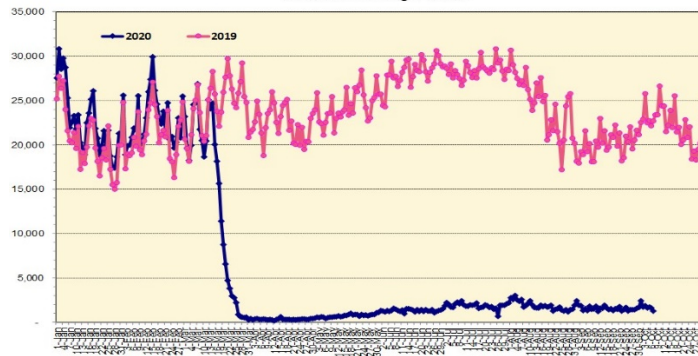
Note: Excludes flights from Canada

International Passenger Count



Note: Excludes flights from Canada

Domestic Passenger Count



Daily Passenger Count Table

10/07/2020	Domestic	International	Total
Oahu	1053	120	1173
Maui	120		120
Island of Hawaii	94		94
Kauai	0		0
State	1267	120	1387

Market Impact Update: <https://www.dropbox.com/10/08/20 HTA COVID19 Update>

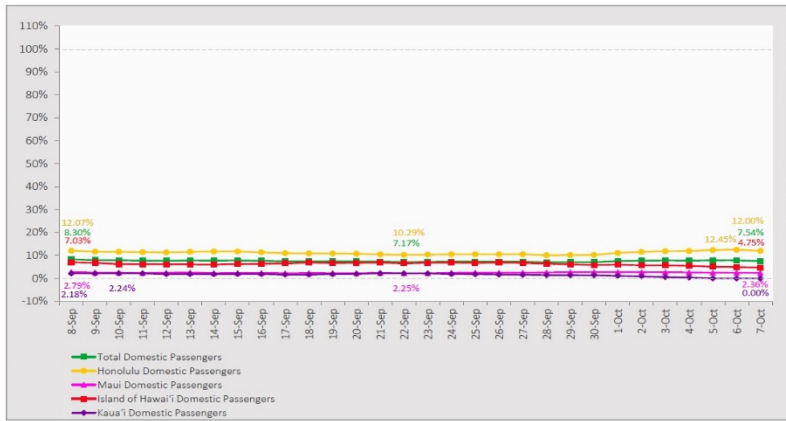
Reason for Trip by Arrival Airport - Transpacific Screened Passengers as of 10/07/20	Honolulu (HNL)	Kahului (OGG)	Kona (KOA)	Lihue (LIH)	Grand Total
Airline Crew	261	16	8	0	285
Essential Worker	75	15	10	0	100
Honeymoon	5	0	0	0	5
Intended Resident	72	5	9	0	86
Military or Federal Government	126	2	0	0	128
Other	159	1	5	0	165
Other Business	39	5	13	0	57
Pleasure/Vacation	35	15	7	0	57
Returning Resident	386	58	44	1	489
To Attend School	4	0	0	0	4
Visiting Friends or Relatives	198	14	26	2	240
(blank)	0	0	0	0	0
Transit	N/A	N/A	N/A	N/A	N/A
Grand Total	1,360	131	122	3	1,616

Source: Safe Travels program developed by the State of Hawaii Office of Enterprise Technology Services

Note: The data is preliminary and subject to change

7-Day Domestic by Island Moving Average Daily Passenger Volume

2020 Volume as Percentage of 2019 Volume
Through October 7, 2020



Source: HVCB analysis based on data from DBEDT
Note: Passenger volume figures include both visitors and residents.

Domestic by Island Month-to-Date and Year-to-Date Daily Passenger Volume

2020 Volume versus 2019 Volume
Through October 7, 2020

October 2020 (Month-to-Date through October 7)

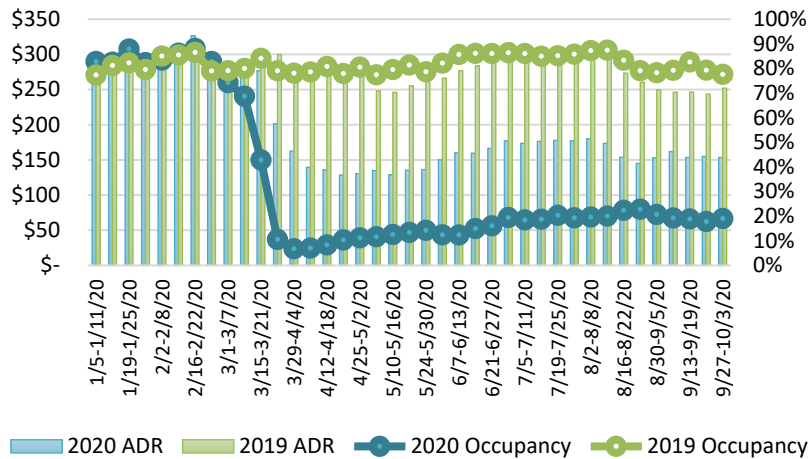
	2020	2019	Volume Change	Percent Change
Honolulu	10,329	85,725	-75,396	-88.0%
Maui County	1,032	42,890	-41,858	-97.6%
Island of Hawai'i	795	16,012	-15,217	-95.0%
Kaua'i	0	14,496	-14,496	-100.0%
Total	12,156	159,123	-146,967	-92.4%

2020 (Year-to-Date through October 7)

	2020	2019	Volume Change	Percent Change
Honolulu	1,174,607	3,564,975	-2,390,368	-67.1%
Maui County	458,712	1,736,960	-1,278,248	-73.6%
Island of Hawai'i	230,358	769,146	-538,788	-70.1%
Kaua'i	152,064	593,957	-441,893	-74.4%
Total	2,015,741	6,665,038	-4,649,298	-69.8%

Source: HVCB analysis based on data from DBEDT
Note: Passenger volume figures include both visitors and residents. Total includes other international passengers. 2020 includes one additional day due to Leap Year (February 29th, 2020).

State of Hawai'i Hotel Performance by Week - 2020 vs 2019



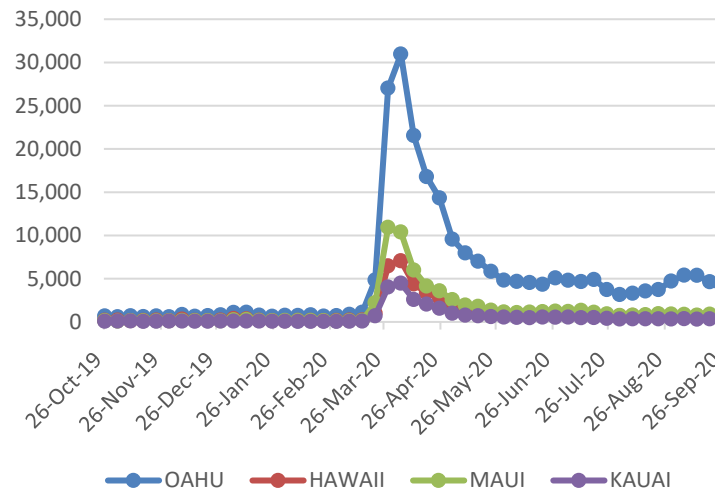
Source: STR, Inc. © Copyright 2020 Hawai'i Tourism Authority

Hawaii Hotel Performance Info:

For the week of September 27 – October 03, 2020

	Occupancy	ADR	RevPAR
State of Hawaii	19.0%	\$ 153.49	\$ 29.24
Oahu	19.0%	\$ 153.37	\$ 29.18
Maui County	18.8%	\$ 165.99	\$ 31.28
Kauai County	15.0%	\$ 152.30	\$ 22.88
Island of Hawaii	22.6%	\$ 134.69	\$ 30.38

2020 Initial Weekly Unemployment Claims by Island



Weekly Unemployment Initial Claims: September 26, 2020

State of Hawaii	5,702
C&C of Oahu	3,717
Hawaii County	775
Maui County	805
Kauai County	289
Agent (filed in Hawaii against another state)	116

News Highlights

October 8, 2020

Honolulu Star Advertiser: [Dr. Anthony Fauci says prudent measures needed for Hawaii tourism to recover](#)

Honolulu Star Advertiser: [Pre-travel testing program on track](#)

Honolulu Star Advertiser: [Column: Keep quarantine until we have testing protocol that won't fail](#)

Hawaii News Now: [County mayors in disagreement over the state's tourism relaunch plan](#)

Honolulu Civil Beat: [Ige: Hawaii Is Still On Track For Oct. 15 Tourism Reopening](#)

The Garden Island: [A week to go, officials weigh-in on reopening](#)

The Garden Island: [State launches second surveillance testing program](#)

Hawaii Tribune-Herald: [Lawmakers to Kim: Don't opt out of pre-travel testing program](#)

Big Island Now: [Post-Arrival Surveillance Testing of Tourists Won't Carry Quarantine Penalties](#)

ABC News: [Hawaii pushes forward with tourism despite safety concerns](#)

Helpful Resources

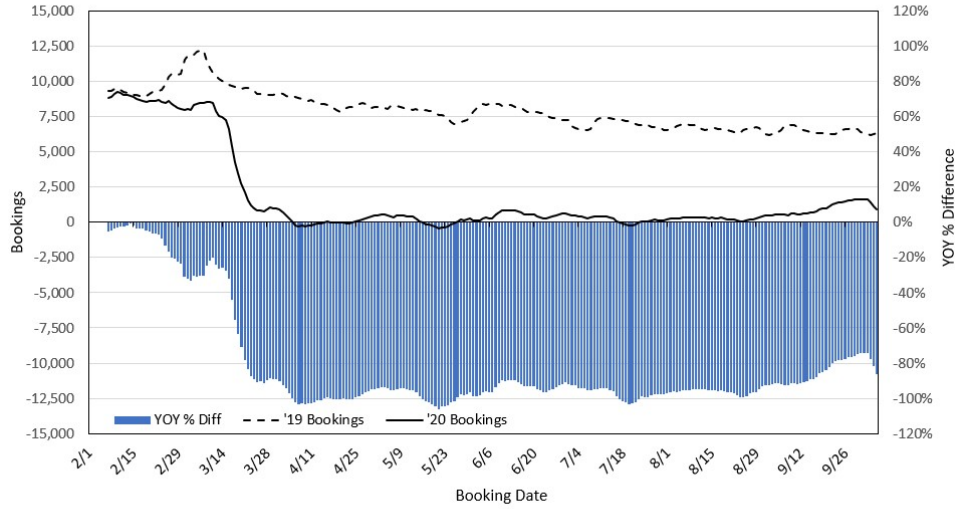
Department of Health
<https://hawaiiocovid19.com/>

Department of Health
<https://health.hawaii.gov/docd/advisories/novel-coronavirus-2019>

Dept. of Business, Economic Development & Tourism
<https://dbedt.hawaii.gov/economic/covid19/>

Department of Transportation
<https://hidot.hawaii.gov/coronavirus/>

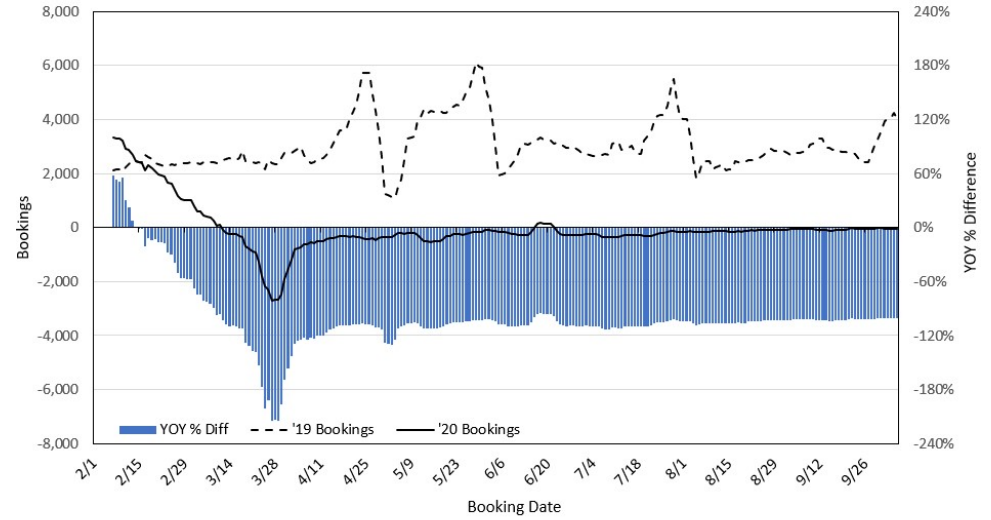
Travel Agency Bookings to Hawaii for Future Arrivals*
Based on a 7-day Moving Average, 2020 vs 2019
U.S.



*Future Arrivals refers to all arrivals that are 'future' relative to the referenced booking date.
 Source: Global Agency Pro

Update: Oct 6, 2020

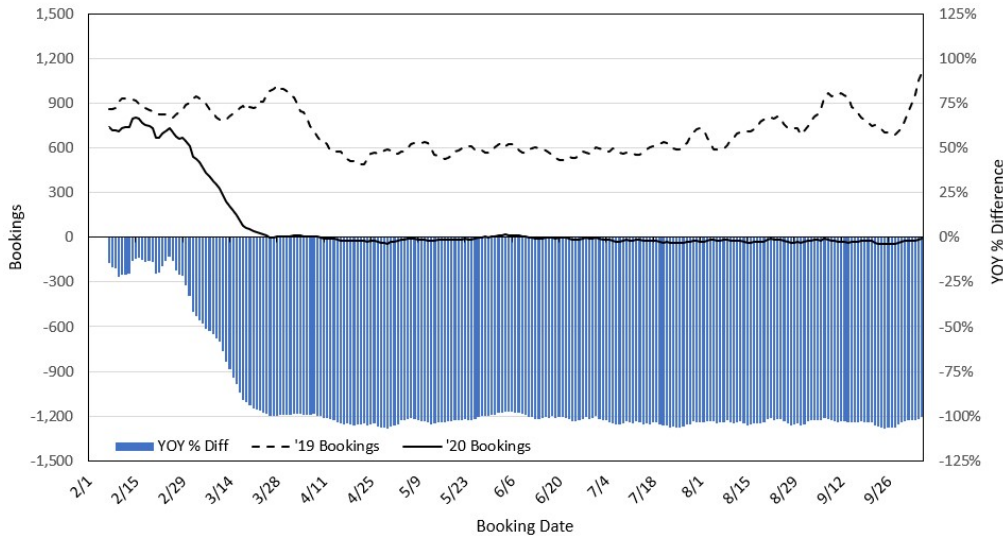
Travel Agency Bookings to Hawaii for Future Arrivals*
Based on a 7-day Moving Average, 2020 vs 2019
Japan



*Future Arrivals refers to all arrivals that are 'future' relative to the referenced booking date.
 Source: Global Agency Pro

Update: Oct 6, 2020

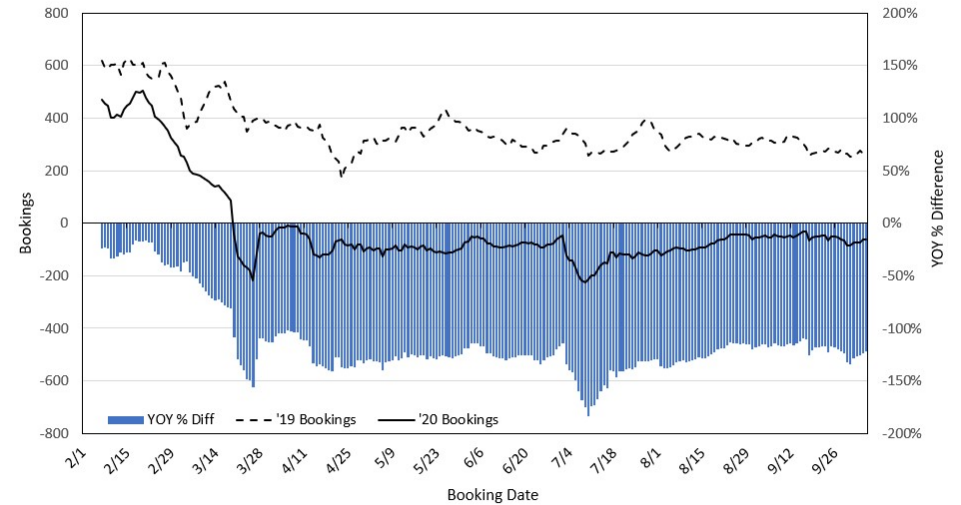
Travel Agency Bookings to Hawaii for Future Arrivals*
Based on a 7-day Moving Average, 2020 vs 2019
Canada



*Future Arrivals refers to all arrivals that are 'future' relative to the referenced booking date.
 Source: Global Agency Pro

Update: Oct 6, 2020

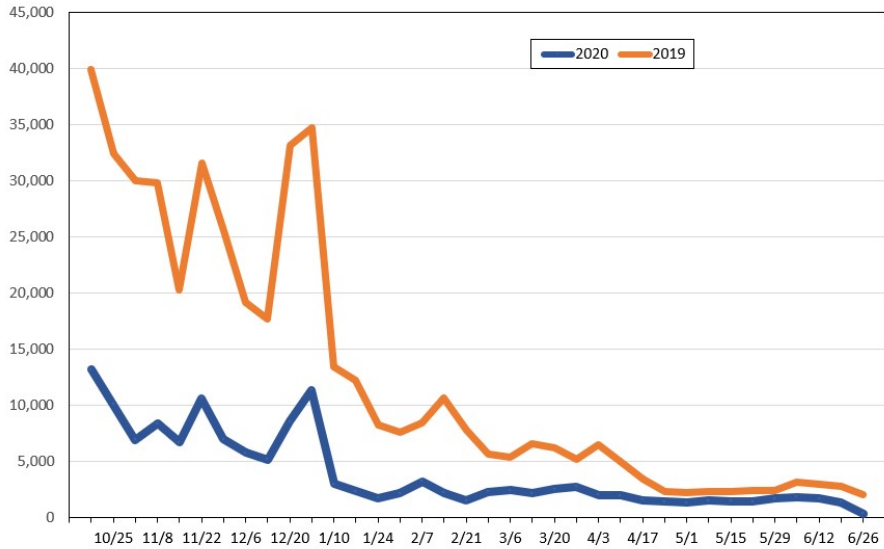
Travel Agency Bookings to Hawaii for Future Arrivals*
Based on a 7-day Moving Average, 2020 vs 2019
Australia



*Future Arrivals refers to all arrivals that are 'future' relative to the referenced booking date.
 Source: Global Agency Pro

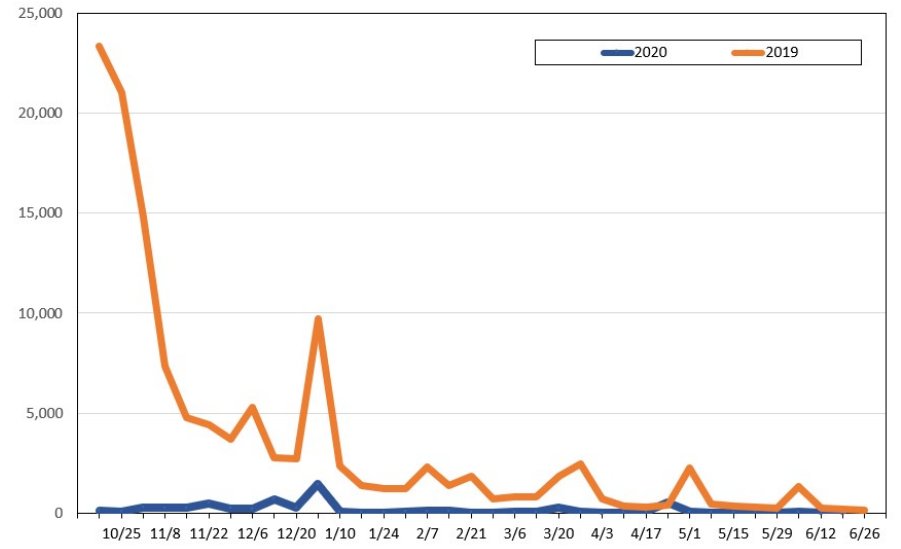
Update: Oct 6, 2020

Travel Agency Weekly Bookings for Future Travel to Hawai'i as of October 6, 2020
U.S.



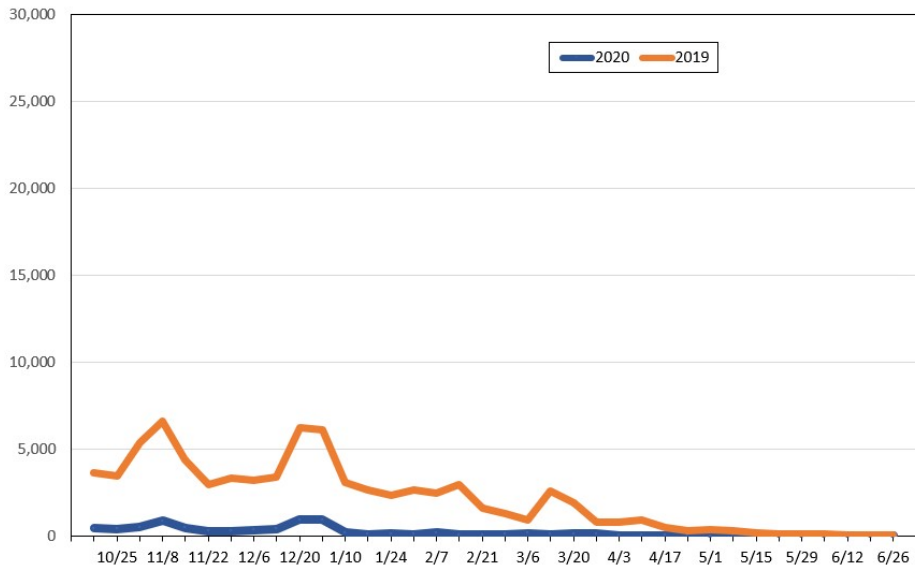
Source: Global Agency Pro, as of October 6, 2020

Travel Agency Weekly Bookings for Future Travel to Hawai'i as of October 6, 2020
Japan



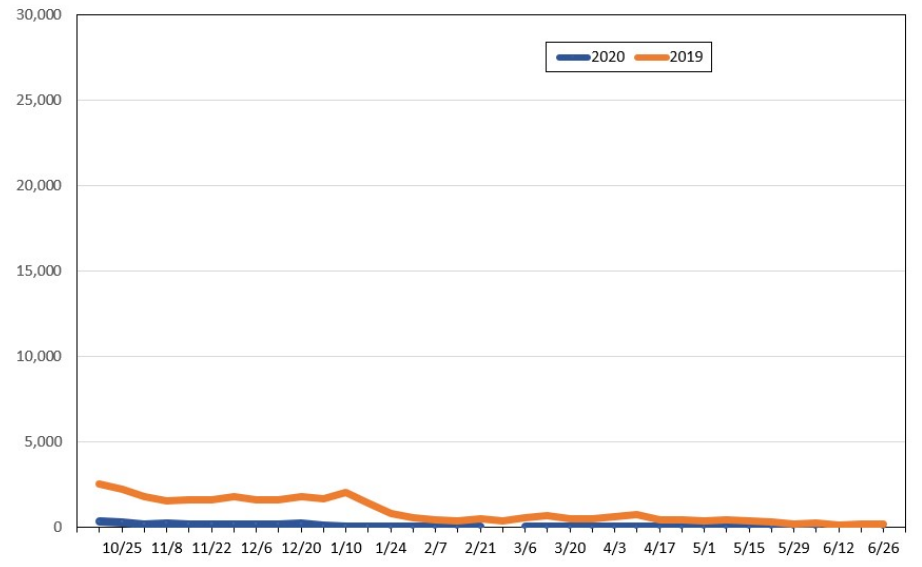
Source: Global Agency Pro, as of October 6, 2020

Travel Agency Weekly Bookings for Future Travel to Hawai'i as of October 6, 2020
Canada



Source: Global Agency Pro, as of October 6, 2020

Travel Agency Weekly Bookings for Future Travel to Hawai'i as of October 6, 2020
Australia



Source: Global Agency Pro, as of October 6, 2020