

# HTA COVID-19 UPDATE

(Issued: 10/12/20 @ 4:00pm)

## Novel Coronavirus in Hawaii

COVID-19 Positive\* Cases

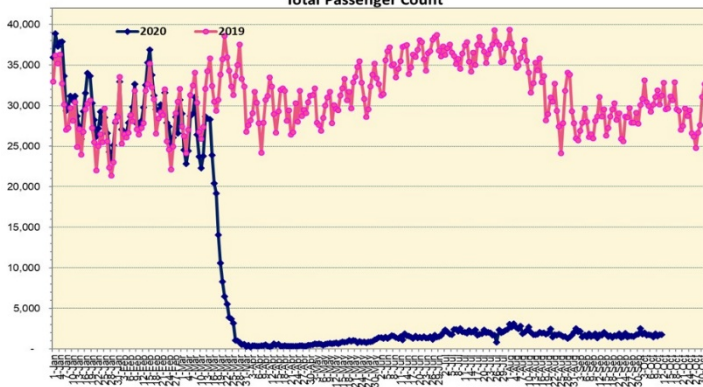
Cumulative totals as of 12:00 noon on October 12, 2020

Statewide	Total
Total Cases	<b>13,514</b> (42 new)
Released from Isolation†	10,781
Required Hospitalization	939
Deaths	169
BY COUNTY	Total
Hawaii County	
Total Cases	953
Released from Isolation†	714
Required Hospitalization	50
Deaths	15
Honolulu County	
Total Cases	12,068
Released from Isolation†	9,643
Required Hospitalization	830
Deaths	141
Kauai County	
Total Cases	59
Released from Isolation†	58
Required Hospitalization	1
Deaths	0
Maui County	
Total Cases	397
Released from Isolation†	366
Required Hospitalization	56
Deaths	12
HI Residents diagnosed outside of HI	37
County Pending	0

\*includes presumptive and confirmed cases, data are preliminary and subject to change; note that CDC provides case counts according to states of residence.

†Isolation should be maintained until at least 3 days (72 hours) after resolution of fever and myalgia without the use of antipyretics OR at least 7 days have passed since symptom onset, whichever is longer.

Total Passenger Count

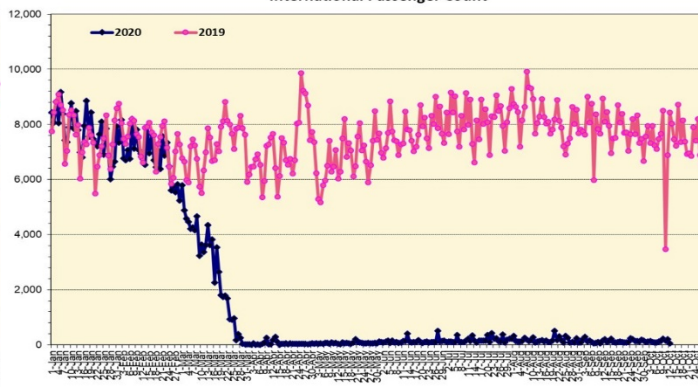


Note: Excludes flights from Canada

### Daily Passenger Count Table

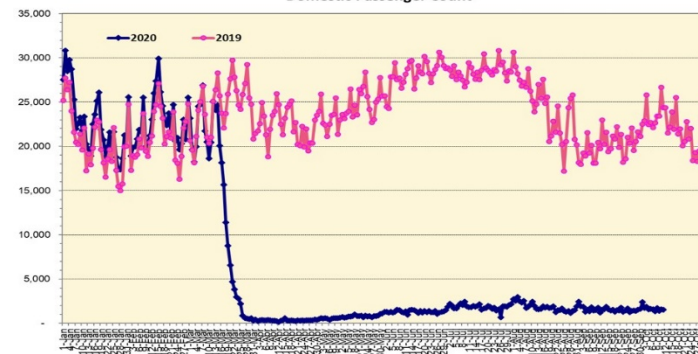
10/11/2020	Domestic	International	Total
Oahu	1306	212	1518
Maui	126		126
Island of Hawaii	106		106
Kauai	0		0
State	1538	212	1750

International Passenger Count



Note: Excludes flights from Canada

Domestic Passenger Count



Market Impact Update: <https://www.dropbox.com/10/12/20 HTA COVID19 Update>

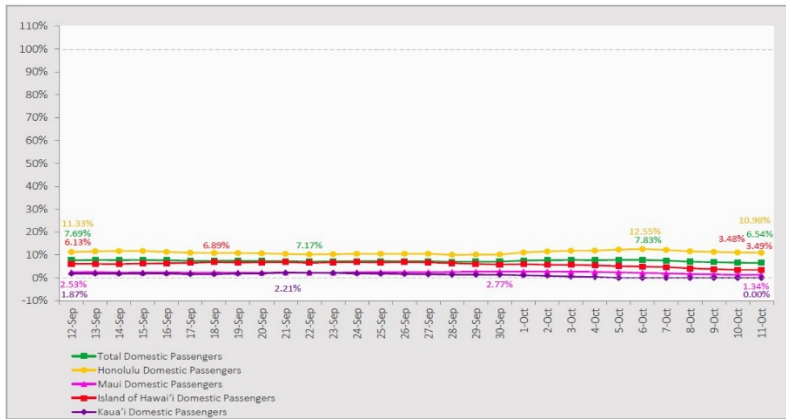
Reason for Trip by Arrival Airport - Transpacific Screened Passengers as of 10/11/20	Honolulu (HNL)	Kahului (OGG)	Kona (KOA)	Lihue (LIH)	Grand Total
Airline Crew	246	29	14	0	289
Corporate Meeting	1	0	0	0	1
Essential Worker	117	18	13	1	149
Intended Resident	75	0	9	0	84
Military or Federal Government	117	0	0	0	117
Other	34	3	2	0	39
Other Business	46	6	10	0	62
Pleasure/Vacation	62	5	14	0	81
Returning Resident	592	56	43	0	691
To Attend School	4	0	0	0	4
To Get Married	1	0	0	0	1
Transit	111	0	0	0	111
Visiting Friends or Relatives	163	31	25	1	220
<b>Grand Total</b>	<b>1,569</b>	<b>148</b>	<b>130</b>	<b>2</b>	<b>1,849</b>

Source: Safe Travels program developed by the State of Hawaii Office of Enterprise Technology Services

Note: The data is preliminary and subject to change

### 7-Day Domestic by Island Moving Average Daily Passenger Volume

2020 Volume as Percentage of 2019 Volume  
Through October 11, 2020



Source: HVCB analysis based on data from DBEDT  
Note: Passenger volume figures include both visitors and residents.

### Domestic by Island Month-to-Date and Year-to-Date Daily Passenger Volume

2020 Volume versus 2019 Volume  
Through October 11, 2020

October 2020 (Month-to-Date through October 11)

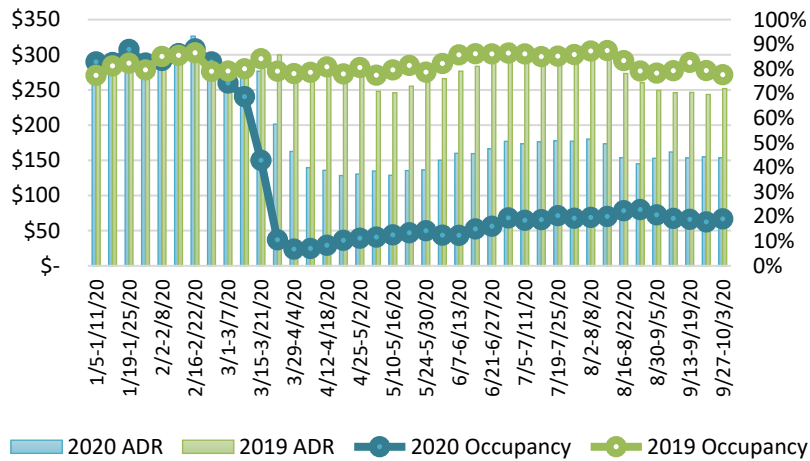
	2020	2019	Volume Change	Percent Change
Honolulu	15,977	134,735	-118,758	-88.1%
Maui County	1,257	67,894	-66,637	-98.1%
Island of Hawai'i	1,164	25,643	-24,479	-95.5%
Kaua'i	0	22,444	-22,444	-100.0%
<b>Total</b>	<b>18,398</b>	<b>250,716</b>	<b>-232,318</b>	<b>-92.7%</b>

2020 (Year-to-Date through October 11)

	2020	2019	Volume Change	Percent Change
Honolulu	1,180,255	3,613,985	-2,433,730	-67.3%
Maui County	458,937	1,761,964	-1,303,027	-74.0%
Island of Hawai'i	230,727	778,777	-548,050	-70.4%
Kaua'i	152,064	601,905	-449,841	-74.7%
<b>Total</b>	<b>2,021,983</b>	<b>6,756,631</b>	<b>-4,734,649</b>	<b>-70.1%</b>

Source: HVCB analysis based on data from DBEDT  
Notes: Passenger volume figures include both visitors and residents. Total includes other international passengers. 2020 includes one additional day due to Leap Year (February 29th, 2020).

### State of Hawai'i Hotel Performance by Week - 2020 vs 2019



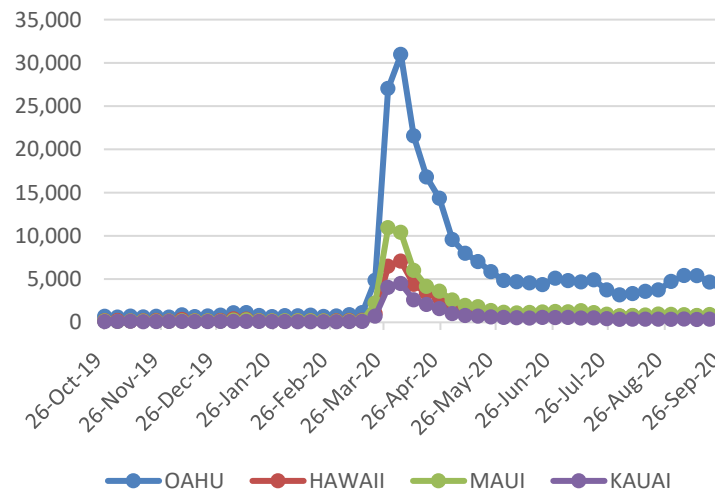
Source: STR, Inc. © Copyright 2020 Hawai'i Tourism Authority

### Hawaii Hotel Performance Info:

For the week of September 27 – October 03, 2020

	Occupancy	ADR	RevPAR
<b>State of Hawaii</b>	19.0%	\$ 153.49	\$ 29.24
<b>Oahu</b>	19.0%	\$ 153.37	\$ 29.18
<b>Maui County</b>	18.8%	\$ 165.99	\$ 31.28
<b>Kauai County</b>	15.0%	\$ 152.30	\$ 22.88
<b>Island of Hawaii</b>	22.6%	\$ 134.69	\$ 30.38

### 2020 Initial Weekly Unemployment Claims by Island



### Weekly Unemployment Initial Claims: September 26, 2020

State of Hawaii	5,702
C&C of Oahu	3,717
Hawaii County	775
Maui County	805
Kauai County	289
Agent (filed in Hawaii against another state)	116

## News Highlights

October 12, 2020

**Hawaii News Now:** [Victorino wants to open travel within Maui County's islands, but some disagree](#)

**Honolulu Star Advertiser:** [David Shapiro: State reopening Hawaii tourism on a wish and a prayer](#)

**KHON2:** [What returning residents should know about Hawaii's pre-travel testing program](#)

**KHON2:** [What to expect at the airport when the pre-travel testing program begins](#)

**Honolulu Civil Beat:** [Will Hawaii Finally Be Able To Break Its Dependence On Tourism?](#)

**Hawaii Public Radio:** [Big Island Gets Governor Agreement 'In Concept' For Second Test As State Prepares To Reopen](#)

**The Maui News:** [Need to travel interisland without quarantining](#)

**Maui Now:** [Maui's Struggling Tourism Industry Prepares For Return of Transpacific Travelers](#)

**The Mercury News:** [U.S. Covid-19 travel restrictions state by state](#)

**SF Gate:** [Cracks, confusion appear as Hawaii traveler testing deadline looms](#)

### Helpful Resources

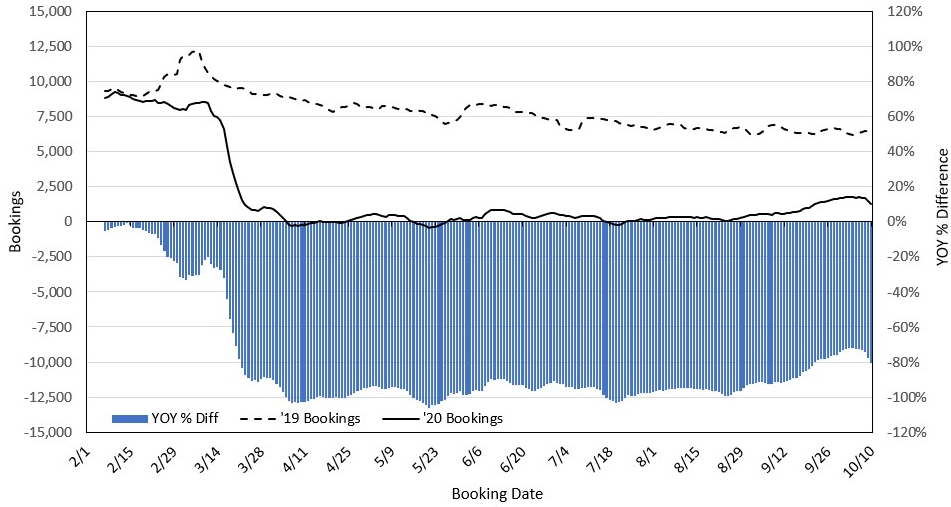
**Department of Health**  
<https://hawaiiocovid19.com/>

**Department of Health**  
<https://health.hawaii.gov/docd/advisories/novel-coronavirus-2019>

**Dept. of Business, Economic Development & Tourism**  
<https://dbedt.hawaii.gov/economic/covid19/>

**Department of Transportation**  
<https://hidot.hawaii.gov/coronavirus/>

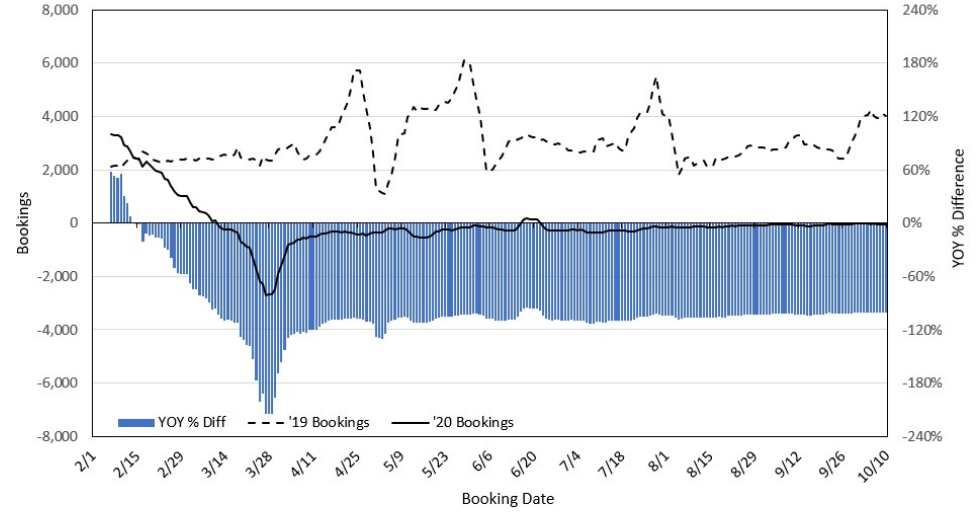
**Travel Agency Bookings to Hawaii for Future Arrivals\***  
**Based on a 7-day Moving Average, 2020 vs 2019**  
**U.S.**



\*Future Arrivals refers to all arrivals that are 'future' relative to the referenced booking date.  
 Source: Global Agency Pro

Update: Oct 10, 2020

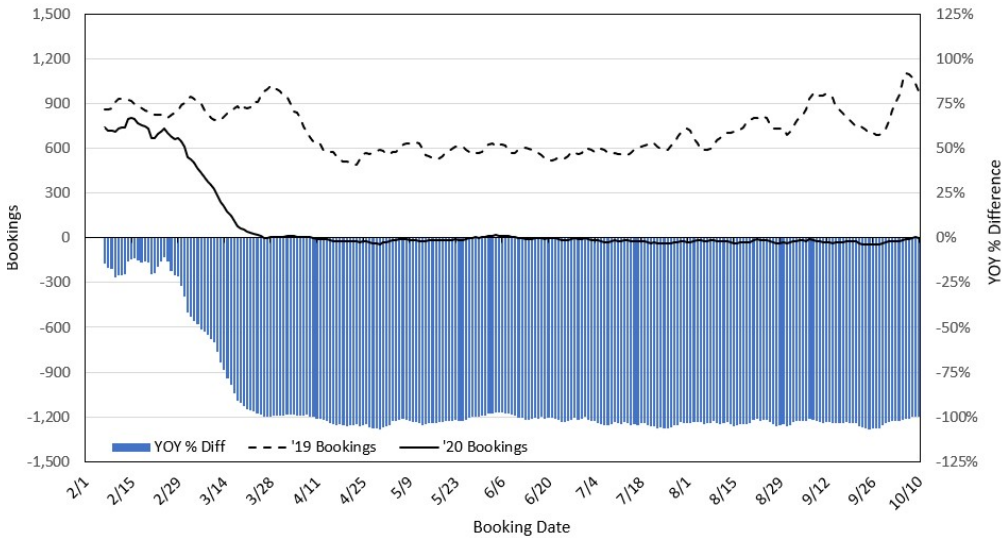
**Travel Agency Bookings to Hawaii for Future Arrivals\***  
**Based on a 7-day Moving Average, 2020 vs 2019**  
**Japan**



\*Future Arrivals refers to all arrivals that are 'future' relative to the referenced booking date.  
 Source: Global Agency Pro

Update: Oct 10, 2020

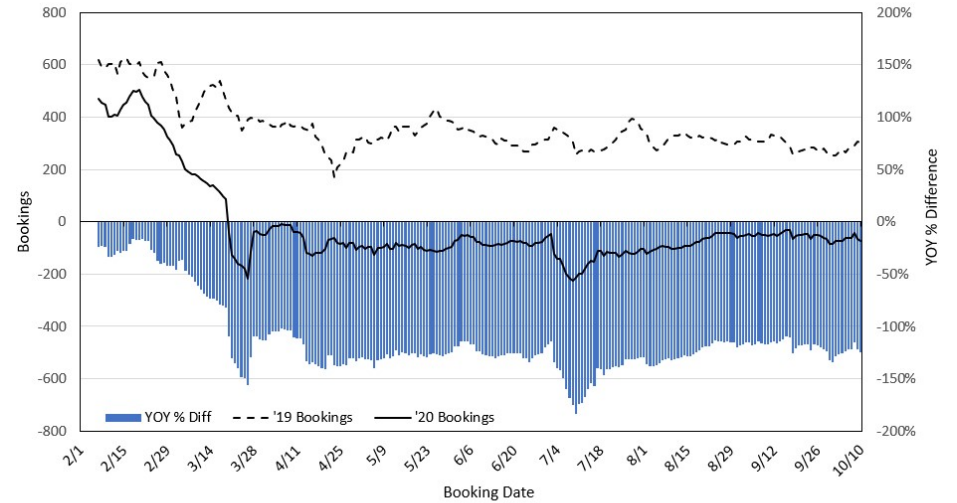
**Travel Agency Bookings to Hawaii for Future Arrivals\***  
**Based on a 7-day Moving Average, 2020 vs 2019**  
**Canada**



\*Future Arrivals refers to all arrivals that are 'future' relative to the referenced booking date.  
 Source: Global Agency Pro

Update: Oct 10, 2020

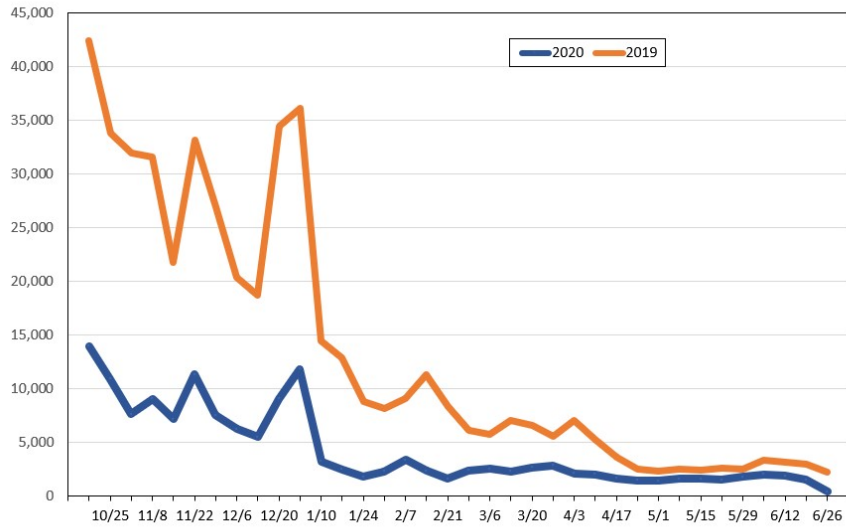
**Travel Agency Bookings to Hawaii for Future Arrivals\***  
**Based on a 7-day Moving Average, 2020 vs 2019**  
**Australia**



\*Future Arrivals refers to all arrivals that are 'future' relative to the referenced booking date.  
 Source: Global Agency Pro

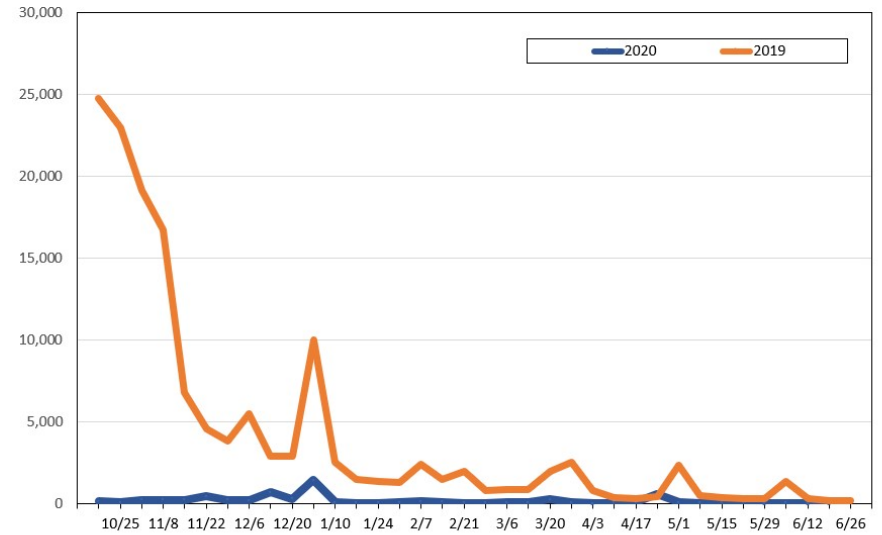
Update: Oct 10, 2020

**Travel Agency Weekly Bookings for Future Travel to Hawai'i as of October 10, 2020**  
U.S.



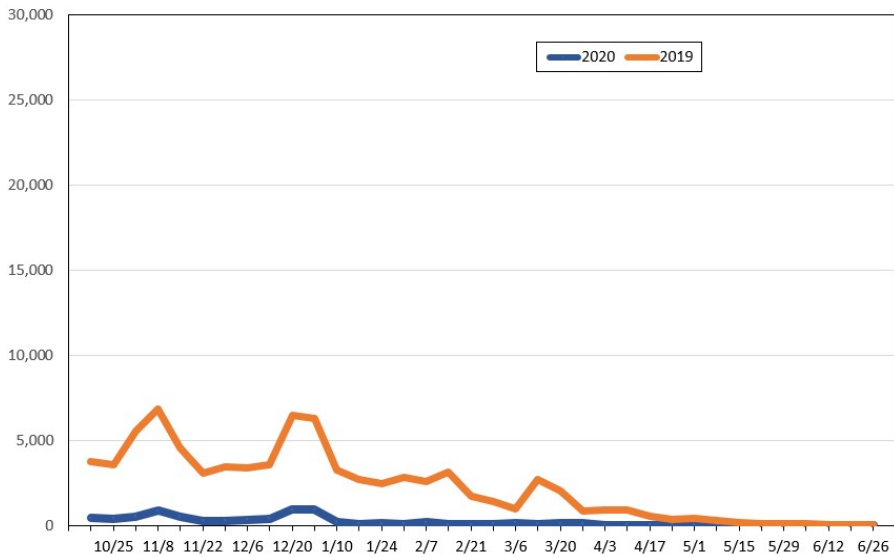
Source: Global Agency Pro, as of October 10, 2020

**Travel Agency Weekly Bookings for Future Travel to Hawai'i as of October 10, 2020**  
Japan



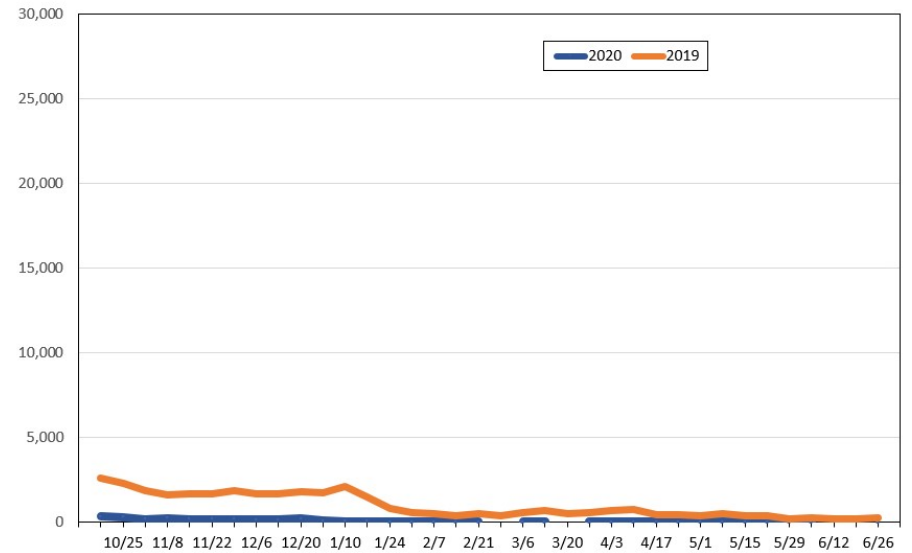
Source: Global Agency Pro, as of October 10, 2020

**Travel Agency Weekly Bookings for Future Travel to Hawai'i as of October 10, 2020**  
Canada



Source: Global Agency Pro, as of October 10, 2020

**Travel Agency Weekly Bookings for Future Travel to Hawai'i as of October 10, 2020**  
Australia



Source: Global Agency Pro, as of October 10, 2020