

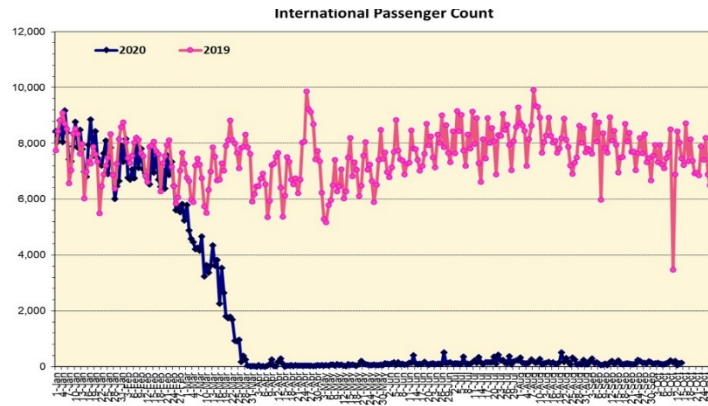
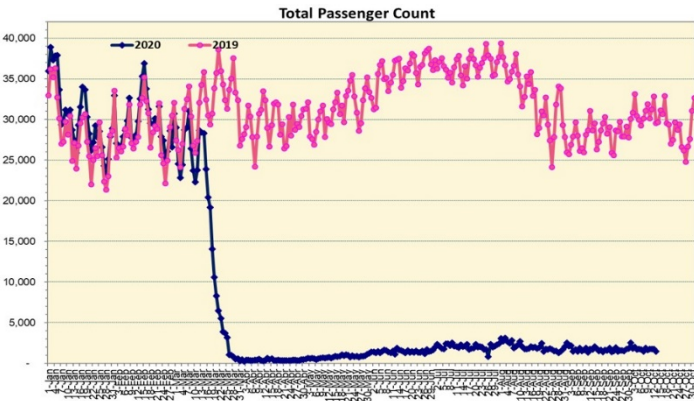
HTA COVID-19 UPDATE

(Issued: 10/14/20 @ 4:30pm)

Novel Coronavirus in Hawaii

COVID-19 Positive* Cases

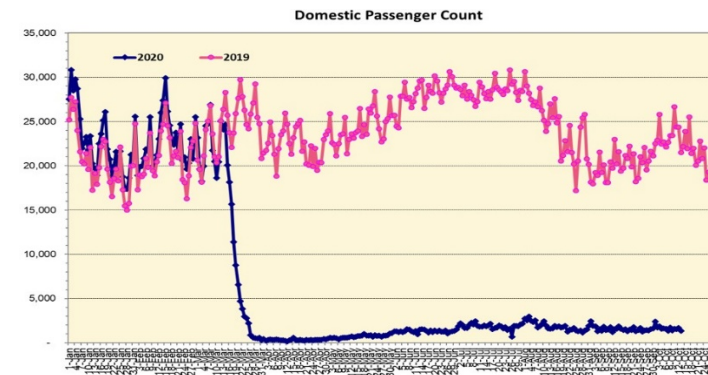
Cumulative totals as of 12:00 noon on October 14, 2020



Note: Excludes flights from Canada

Daily Passenger Count Table

10/13/2020	Domestic	International	Total
Oahu	1180	127	1307
Maui	117		117
Island of Hawaii	41		41
Kauai	0		0
State	1338	127	1465



Note: Excludes flights from Canada

Market Impact Update: <https://www.dropbox.com/10/14/20 HTA COVID19 Update>

Reason for Trip by Arrival Airport - Transpacific Screened Passengers as of 10/13/20	Honolulu (HNL)	Kahului (OGG)	Kona (KOA)	Lihue (LIH)	Grand Total
Airline Crew	241	19	17	0	277
Corporate Meeting	1	0	0	0	1
Essential Worker	82	9	3	0	94
Honeymoon	3	0	0	0	3
Intended Resident	84	3	5	1	93
Military or Federal Government	141	0	0	0	141
Other	37	3	4	0	44
Other Business	42	8	7	2	59
Pleasure/Vacation	75	5	5	2	87
Returning Resident	483	48	19	1	551
To Attend School	1	0	0	0	1
Transit	175	0	0	0	175
Visiting Friends or Relatives	199	12	5	0	216
Grand Total	1,564	107	65	6	1,742

Source: Safe Travels program developed by the State of Hawaii Office of Enterprise Technology Services

Note: The data is preliminary and subject to change

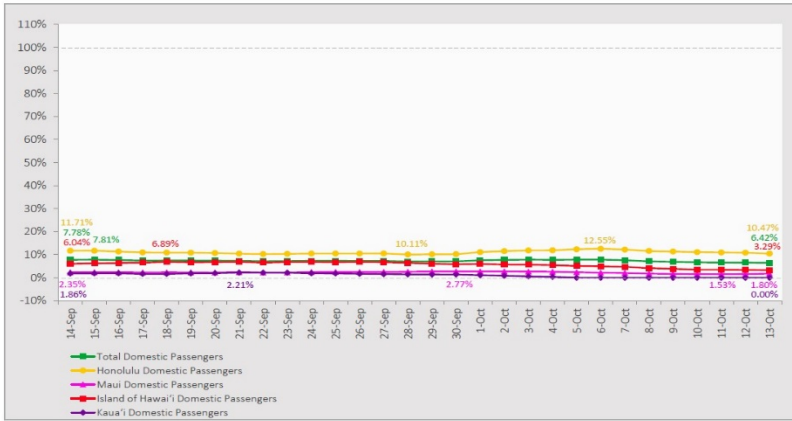
Statewide	Total
Total Cases	13,674 (101 new)
Released from Isolation†	10,883
Required Hospitalization	961
Deaths	183
BY COUNTY	Total
Hawaii County	
Total Cases	992
Released from Isolation†	736
Required Hospitalization	52
Deaths	18
Honolulu County	
Total Cases	12,176
Released from Isolation†	9,716
Required Hospitalization	849
Deaths	146
Kauai County	
Total Cases	59
Released from Isolation†	58
Required Hospitalization	1
Deaths	0
Maui County	
Total Cases	409
Released from Isolation†	373
Required Hospitalization	57
Deaths	18
HI Residents diagnosed outside of HI	38
County Pending	0

*includes presumptive and confirmed cases, data are preliminary and subject to change; note that CDC provides case counts according to states of residence.

†Isolation should be maintained until at least 3 days (72 hours) after resolution of fever and myalgia without the use of antipyretics OR at least 7 days have passed since symptom onset, whichever is longer.

7-Day Domestic by Island Moving Average Daily Passenger Volume

2020 Volume as Percentage of 2019 Volume
Through October 13, 2020



Source: HVCB analysis based on data from DBEDT
Note: Passenger volume figures include both visitors and residents.

Domestic by Island Month-to-Date and Year-to-Date Daily Passenger Volume

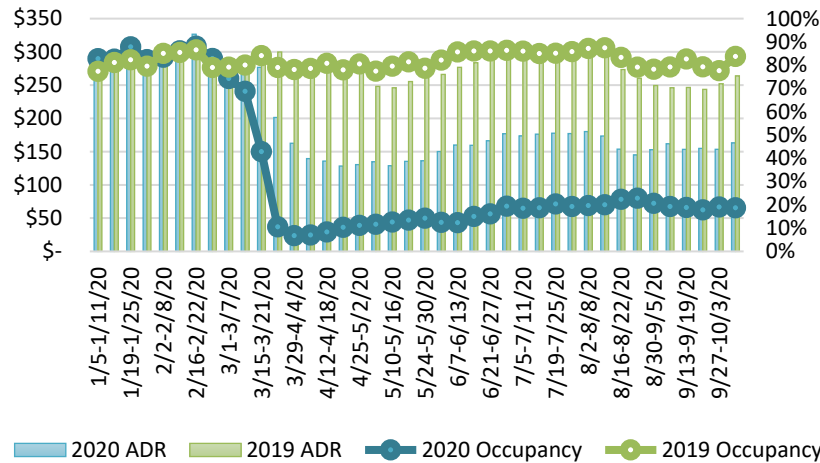
2020 Volume versus 2019 Volume
Through October 13, 2020

October 2020 (Month-to-Date through October 13)				
	2020	2019	Volume Change	Percent Change
Honolulu	18,663	160,778	-142,115	-88.4%
Maui County	1,592	82,607	-81,015	-98.1%
Island of Hawai'i	1,270	30,916	-29,646	-95.9%
Kaua'i	0	27,433	-27,433	-100.0%
Total	21,524	301,734	-280,210	-92.9%

2020 (Year-to-Date through October 13)				
	2020	2019	Volume Change	Percent Change
Honolulu	1,182,940	3,640,028	-2,457,088	-67.5%
Maui County	459,272	1,776,677	-1,317,406	-74.1%
Island of Hawai'i	230,833	784,050	-553,217	-70.6%
Kaua'i	152,064	606,894	-454,830	-74.9%
Total	2,025,109	6,807,649	-4,782,540	-70.3%

Source: HVCB analysis based on data from DBEDT
Note: Passenger volume figures include both visitors and residents. Total includes other international passengers. 2020 includes one additional day due to Leap Year (February 29th, 2020).

State of Hawai'i Hotel Performance by Week - 2020 vs 2019



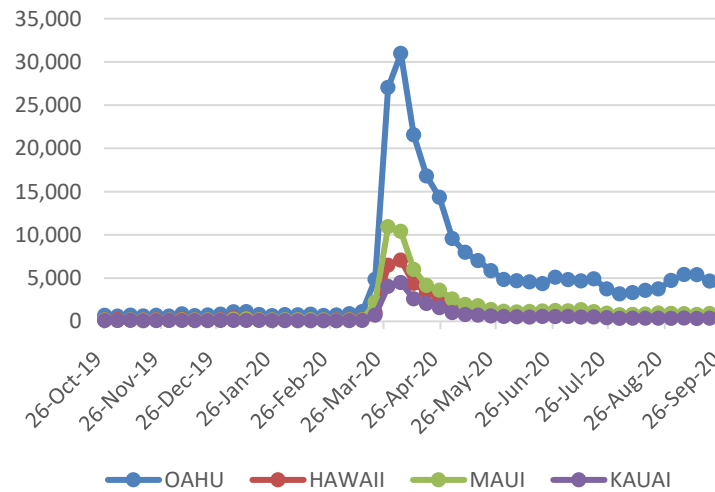
Source: STR, Inc. © Copyright 2020 Hawai'i Tourism Authority

Hawaii Hotel Performance Info:

For the week of October 04 – October 10, 2020

	Occupancy	ADR	RevPAR
State of Hawaii	18.7%	\$ 163.14	\$ 30.58
Oahu	19.3%	\$ 151.83	\$ 29.26
Maui County	16.2%	\$ 201.55	\$ 32.59
Kauai County	17.7%	\$ 168.20	\$ 29.83
Island of Hawaii	22.8%	\$ 142.63	\$ 32.50

2020 Initial Weekly Unemployment Claims by Island



Weekly Unemployment Initial Claims: September 26, 2020

State of Hawaii	5,702
C&C of Oahu	3,717
Hawaii County	775
Maui County	805
Kauai County	289
Agent (filed in Hawaii against another state)	116

News Highlights

October 14, 2020

Honolulu Star Advertiser: [Island-by-island COVID-19 requirements and rules could confuse some visitors](#)

Honolulu Star Advertiser: [Hawaii steps up spending for coronavirus tests and tracing ahead of tourism's return](#)

Honolulu Star Advertiser: [Column: Understanding COVID-19 tests, and testing for Hawaii](#)

KHON2: [Hawaii residents face problems in pre-travel testing process](#)

KHON2: [State, county, local groups prepare to catch quarantine breakers after pre-travel testing program launches](#)

Honolulu Civil Beat: [Lee Cataluna: Hang On For Hawaii's Iffy Reopening](#)

Honolulu Civil Beat: [More Details Emerge On Hawaii's Pre-Travel COVID-19 Test Plan](#)

The Garden Island: [Airlines, hotels gear up for opening](#)

Fox News: [Hawaii governor announces different travel guidelines for visiting different islands](#)

Helpful Resources

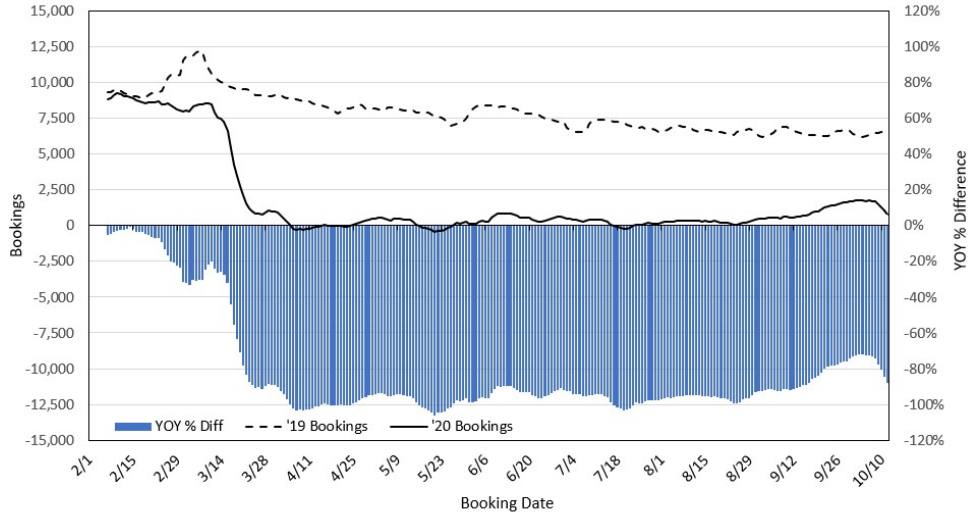
Department of Health
<https://hawaiiocovid19.com/>

Department of Health
<https://health.hawaii.gov/docd/advisories/novel-coronavirus-2019>

Dept. of Business, Economic Development & Tourism
<https://dbedt.hawaii.gov/economic/covid19/>

Department of Transportation
<https://hidot.hawaii.gov/coronavirus/>

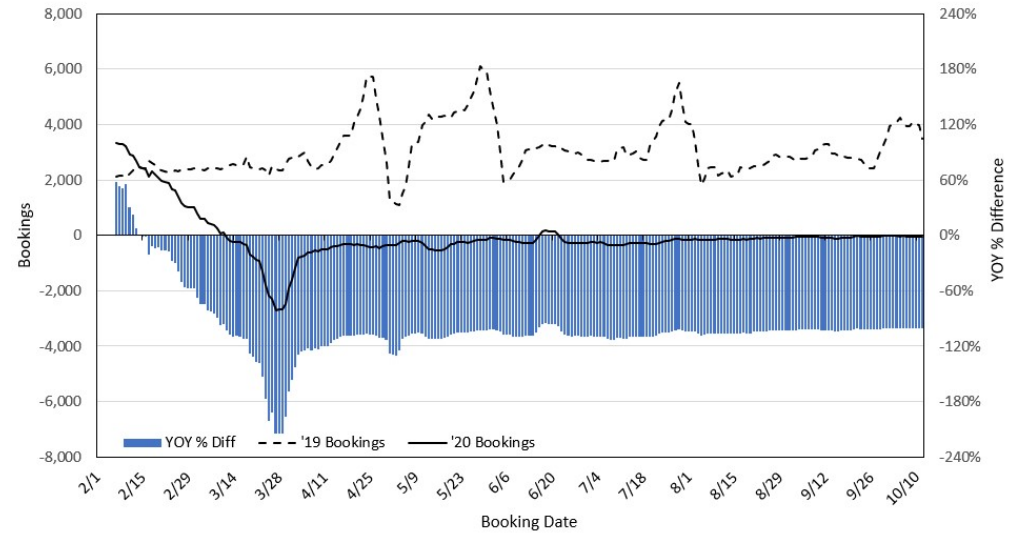
Travel Agency Bookings to Hawaii for Future Arrivals*
Based on a 7-day Moving Average, 2020 vs 2019
U.S.



*Future Arrivals refers to all arrivals that are 'future' relative to the referenced booking date.
 Source: Global Agency Pro

Update: Oct 12, 2020

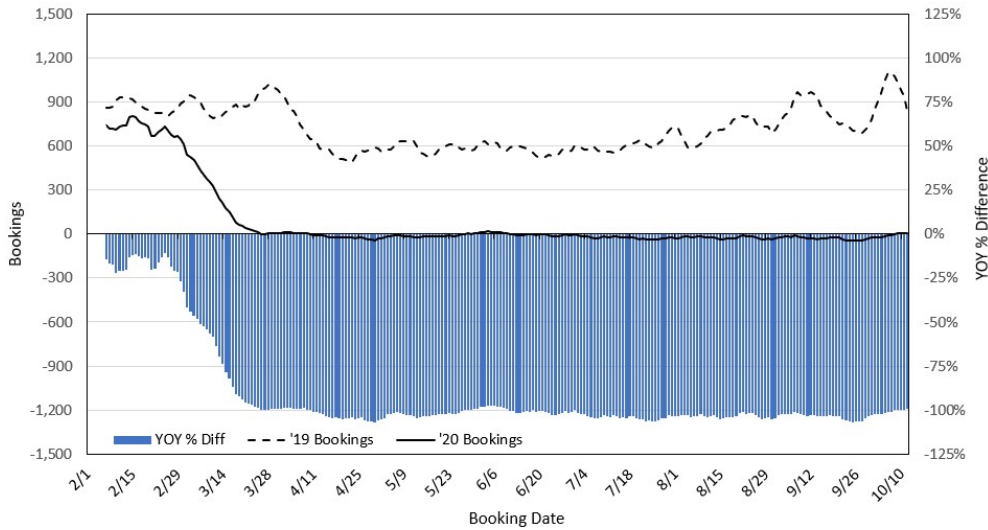
Travel Agency Bookings to Hawaii for Future Arrivals*
Based on a 7-day Moving Average, 2020 vs 2019
Japan



*Future Arrivals refers to all arrivals that are 'future' relative to the referenced booking date.
 Source: Global Agency Pro

Update: Oct 12, 2020

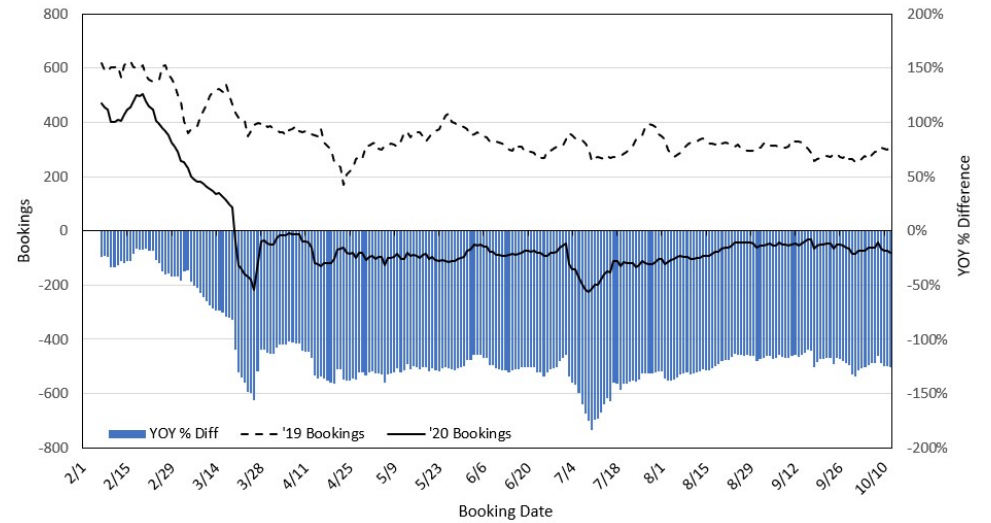
Travel Agency Bookings to Hawaii for Future Arrivals*
Based on a 7-day Moving Average, 2020 vs 2019
Canada



*Future Arrivals refers to all arrivals that are 'future' relative to the referenced booking date.
 Source: Global Agency Pro

Update: Oct 12, 2020

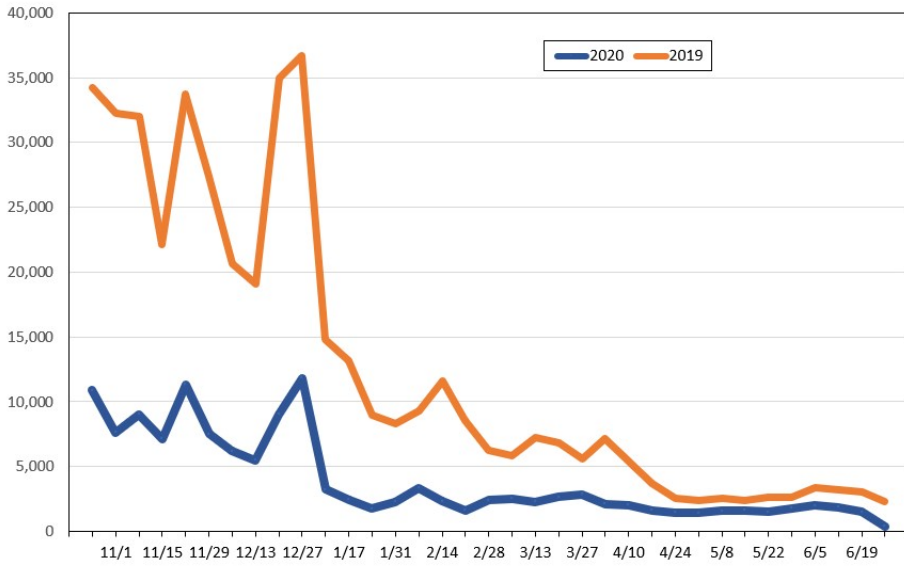
Travel Agency Bookings to Hawaii for Future Arrivals*
Based on a 7-day Moving Average, 2020 vs 2019
Australia



*Future Arrivals refers to all arrivals that are 'future' relative to the referenced booking date.
 Source: Global Agency Pro

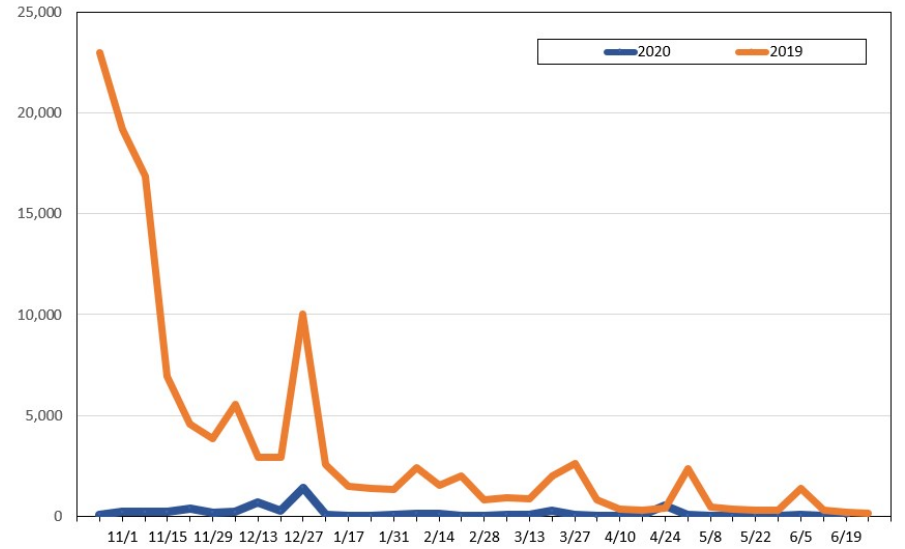
Update: Oct 12, 2020

Travel Agency Weekly Bookings for Future Travel to Hawai'i as of October 12, 2020
U.S.



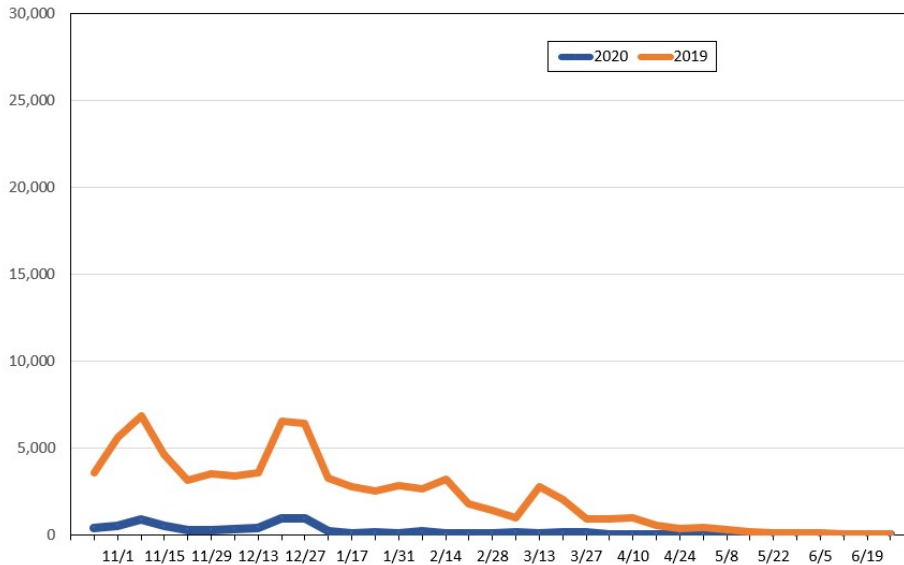
Source: Global Agency Pro, as of October 12, 2020

Travel Agency Weekly Bookings for Future Travel to Hawai'i as of October 12, 2020
Japan



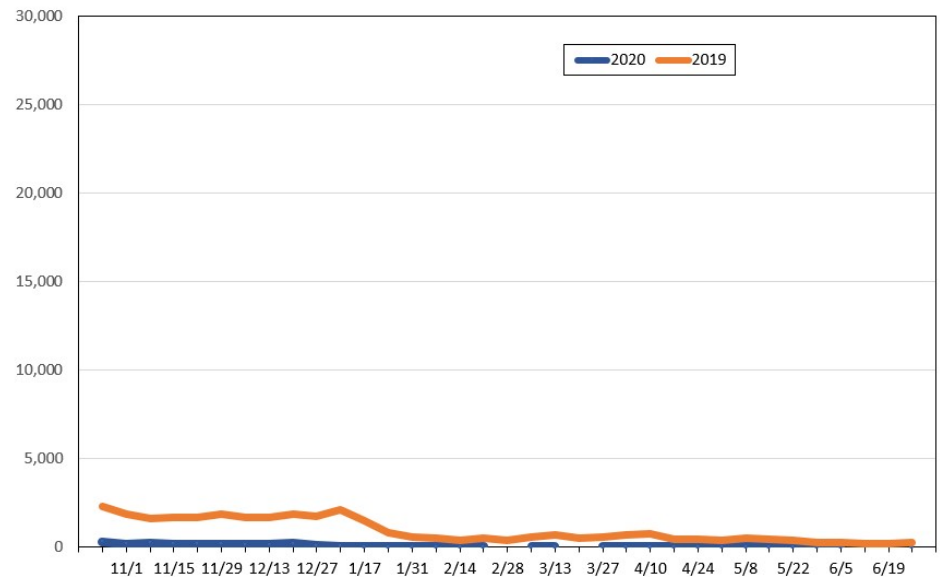
Source: Global Agency Pro, as of October 12, 2020

Travel Agency Weekly Bookings for Future Travel to Hawai'i as of October 12, 2020
Canada



Source: Global Agency Pro, as of October 12, 2020

Travel Agency Weekly Bookings for Future Travel to Hawai'i as of October 12, 2020
Australia



Source: Global Agency Pro, as of October 12, 2020