

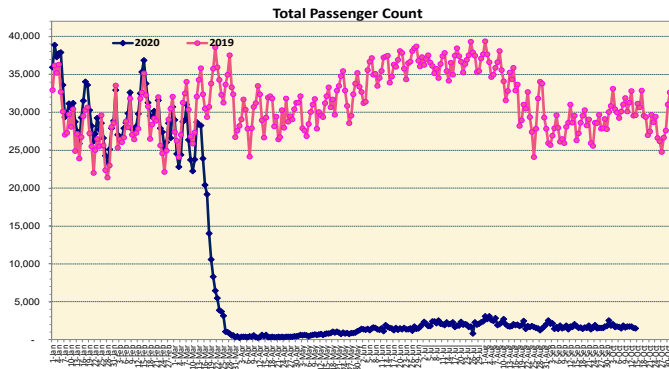
HTA COVID-19 UPDATE

(Issued: 10/15/20 @ 6:00pm)

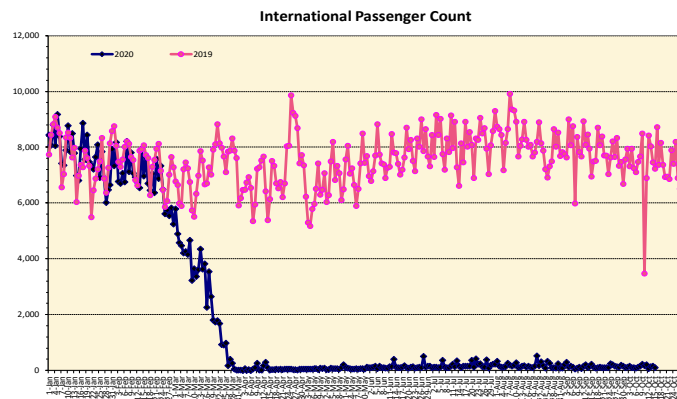
Novel Coronavirus in Hawaii

COVID-19 Positive* Cases

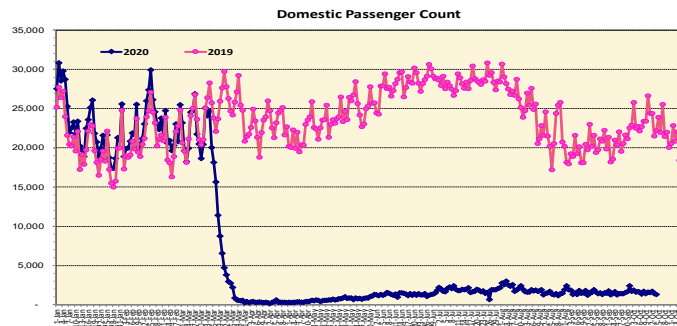
Cumulative totals as of 12:00 noon on October 15, 2020



Note: Excludes flights from Canada



Note: Excludes flights from Canada



Daily Passenger Count Table

10/14/2020	Domestic	International	Total
Oahu	1112	145	1257
Maui	123		123
Island of Hawaii	101		101
Kauai	0		0
State	1336	145	1481

Market Impact Update: <https://www.dropbox.com/10/15/20 HTA COVID19 Update>

Reason for Trip by Arrival Airport - Transpacific Screened Passengers as of 10/14/20	Honolulu (HNL)	Kahului (OGG)	Kona (KOA)	Lihue (LIH)	Grand Total
Airline Crew	325	24	18	4	371
Corporate Meeting	2	0	0	0	2
Essential Worker	73	10	11	0	94
Honeymoon	1	1	0	0	2
Intended Resident	62	7	13	0	82
Military or Federal Government	139	0	0	0	139
Other	42	0	0	0	42
Other Business	82	6	5	0	93
Pleasure/Vacation	134	10	12	1	157
Returning Resident	447	38	46	0	531
Sports Event	2	0	0	0	2
To Attend School	1	0	0	0	1
Transit	149	0	0	0	149
Visiting Friends or Relatives	268	24	13	1	306
Grand Total	1,727	120	118	6	1,971

Source: Safe Travels program developed by the State of Hawaii Office of Enterprise Technology Services

Note: The data is preliminary and subject to change

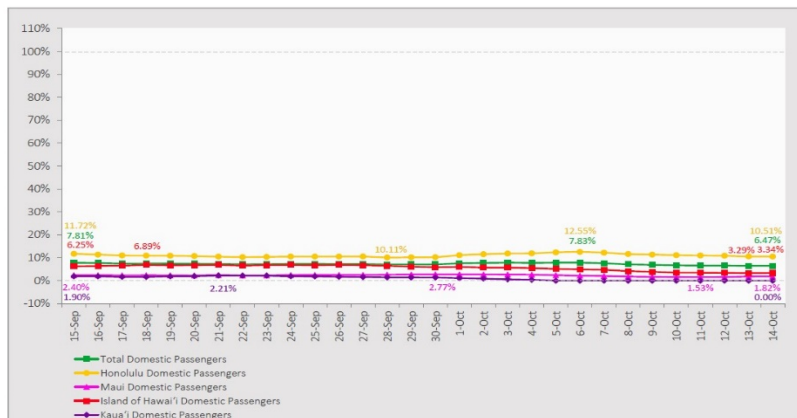
Statewide	Total
Total Cases	13,764 (91 new)
Released from Isolation+	10,915
Required Hospitalization	978
Deaths	184
BY COUNTY	Total
Hawaii County	
Total Cases	1,005
Released from Isolation+	744
Required Hospitalization	54
Deaths	18
Honolulu County	
Total Cases	12,249
Released from Isolation+	9,738
Required Hospitalization	864
Deaths	147
Kauai County	
Total Cases	59
Released from Isolation+	58
Required Hospitalization	1
Deaths	0
Maui County	
Total Cases	411
Released from Isolation+	375
Required Hospitalization	57
Deaths	18
HI Residents diagnosed outside of HI	40
County Pending	0

*includes presumptive and confirmed cases, data are preliminary and subject to change; note that CDC provides case counts according to states of residence.

+Isolation should be maintained until at least 3 days (72 hours) after resolution of fever and myalgia without the use of antipyretics OR at least 7 days have passed since symptom onset, whichever is longer.

7-Day Domestic by Island Moving Average Daily Passenger Volume

2020 Volume as Percentage of 2019 Volume
Through October 14, 2020



Source: HVCB analysis based on data from DBEDT
Note: Passenger volume figures include both visitors and residents.

Domestic by Island Month-to-Date and Year-to-Date Daily Passenger Volume

2020 Volume versus 2019 Volume
Through October 14, 2020

October 2020 (Month-to-Date through October 14)

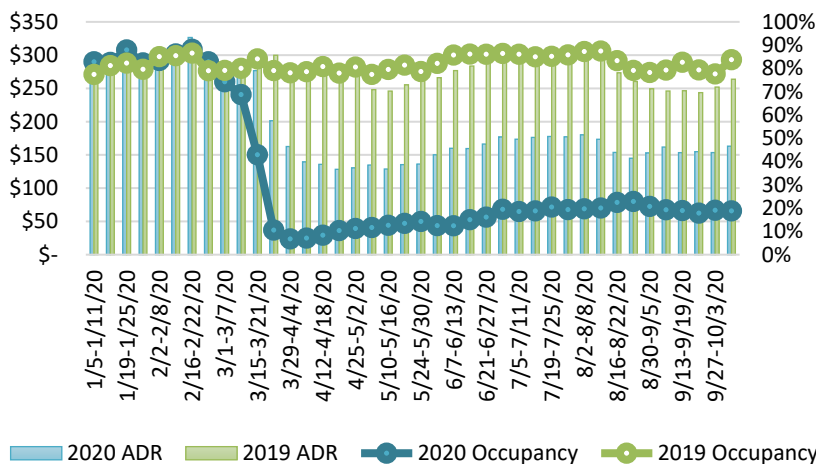
	2020	2019	Volume Change	Percent Change
Honolulu	19,856	174,310	-154,454	-88.6%
Maui County	1,714	88,903	-87,189	-98.1%
Island of Hawai'i	1,371	33,270	-31,899	-95.9%
Kaua'i	0	29,636	-29,636	-100.0%
Total	22,941	326,119	-303,178	-93.0%

2020 (Year-to-Date through October 14)

	2020	2019	Volume Change	Percent Change
Honolulu	1,184,133	3,653,560	-2,469,427	-67.6%
Maui County	459,394	1,782,973	-1,323,579	-74.2%
Island of Hawai'i	230,934	786,404	-555,470	-70.6%
Kaua'i	152,064	609,097	-457,033	-75.0%
Total	2,026,525	6,832,034	-4,805,509	-70.3%

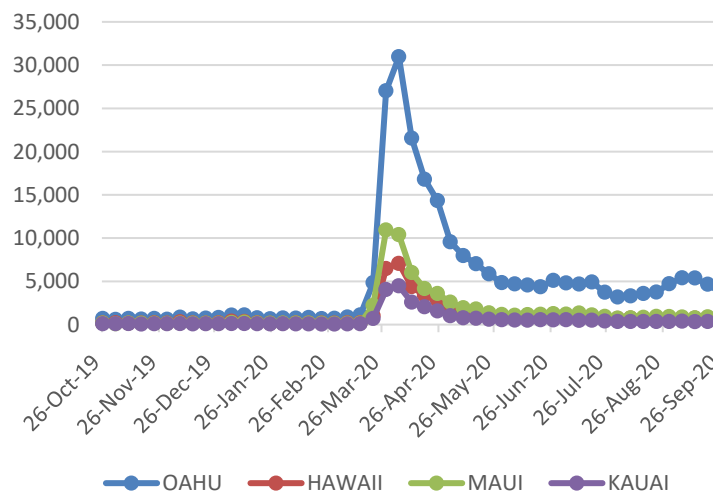
Source: HVCB analysis based on data from DBEDT
Note: Passenger volume figures include both visitors and residents. Total includes other international passengers. 2020 includes one additional day due to Leap Year (February 29th, 2020).

State of Hawai'i Hotel Performance by Week - 2020 vs 2019



Source: STR, Inc. © Copyright 2020 Hawai'i Tourism Authority

2020 Initial Weekly Unemployment Claims by Island



Weekly Unemployment Initial Claims: September 26, 2020

State of Hawaii	5,702
C&C of Oahu	3,717
Hawaii County	775
Maui County	805
Kauai County	289
Agent (filed in Hawaii against another state)	116

Hawaii Hotel Performance Info:

For the week of October 04 – October 10, 2020

	Occupancy	ADR	RevPAR
State of Hawaii	18.7%	\$ 163.14	\$ 30.58
Oahu	19.3%	\$ 151.83	\$ 29.26
Maui County	16.2%	\$ 201.55	\$ 32.59
Kauai County	17.7%	\$ 168.20	\$ 29.83
Island of Hawaii	22.8%	\$ 142.63	\$ 32.50

Helpful Resources

Department of Health
<https://hawaiicovid19.com/>

Department of Health
<https://health.hawaii.gov/docd/advisories/novel-coronavirus-2019>

Dept. of Business, Economic Development & Tourism
<https://dbedt.hawaii.gov/economic/covid19/>

Department of Transportation
<https://hidot.hawaii.gov/coronavirus/>

News Highlights

October 15, 2020

Honolulu Star Advertiser: [Hawaii or bust: A traveler's notebook as tourism reopens](#)

Honolulu Star Advertiser: [Honolulu Mayor Kirk Caldwell questions state's surveillance testing program](#)

Honolulu Star Advertiser: [Residents are conflicted about the return of visitors under Hawaii's pre-travel testing program](#)

Hawaii Public Radio: [As State Reopens, Doctors Warn of Expected Bump In Infected Travelers](#)

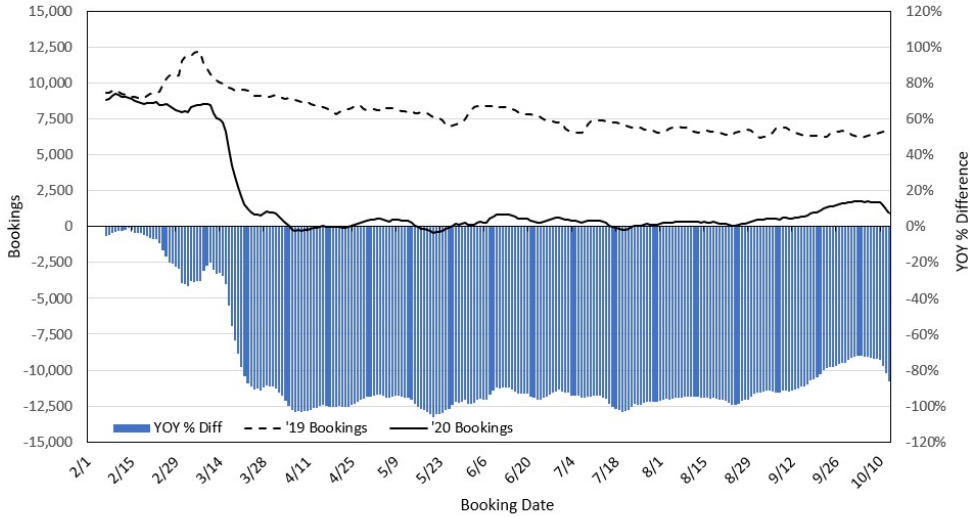
Hawaii Magazine: [What You Need To Know If You're Traveling To Hawaii Now—UPDATED](#)

Forbes: [Hawaii Reopening: Big Island Will Require An Extra COVID Test Upon Arrival, Won't Participate In Inter-Island Program](#)

Business Insider: [Tourists return to Hawaii amid ever-changing pandemic rules](#)

ABC News: [Expert talks holiday travel concerns, Hawaii's tourism restriction rules amid COVID-19 pandemic](#)

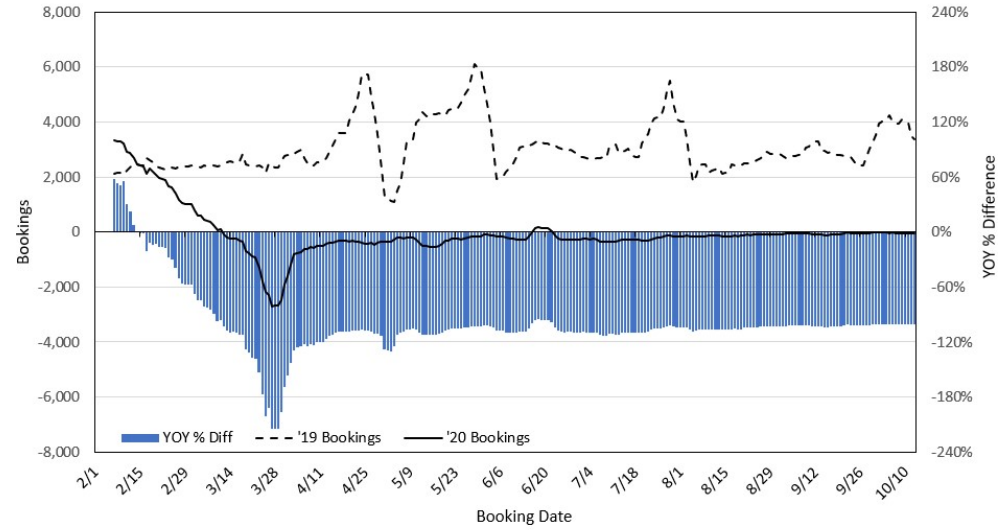
Travel Agency Bookings to Hawaii for Future Arrivals*
Based on a 7-day Moving Average, 2020 vs 2019
U.S.



*Future Arrivals refers to all arrivals that are 'future' relative to the referenced booking date.
 Source: Global Agency Pro

Update: Oct 13, 2020

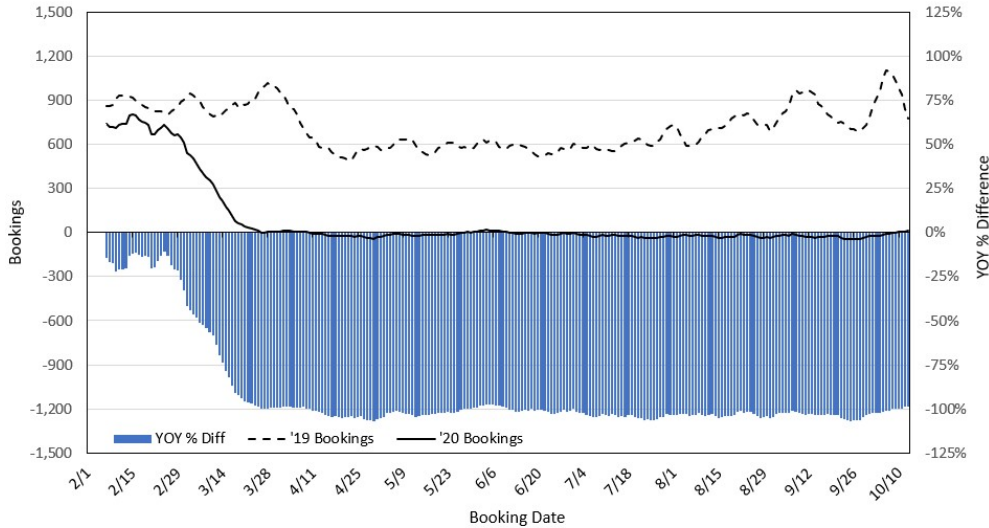
Travel Agency Bookings to Hawaii for Future Arrivals*
Based on a 7-day Moving Average, 2020 vs 2019
Japan



*Future Arrivals refers to all arrivals that are 'future' relative to the referenced booking date.
 Source: Global Agency Pro

Update: Oct 13, 2020

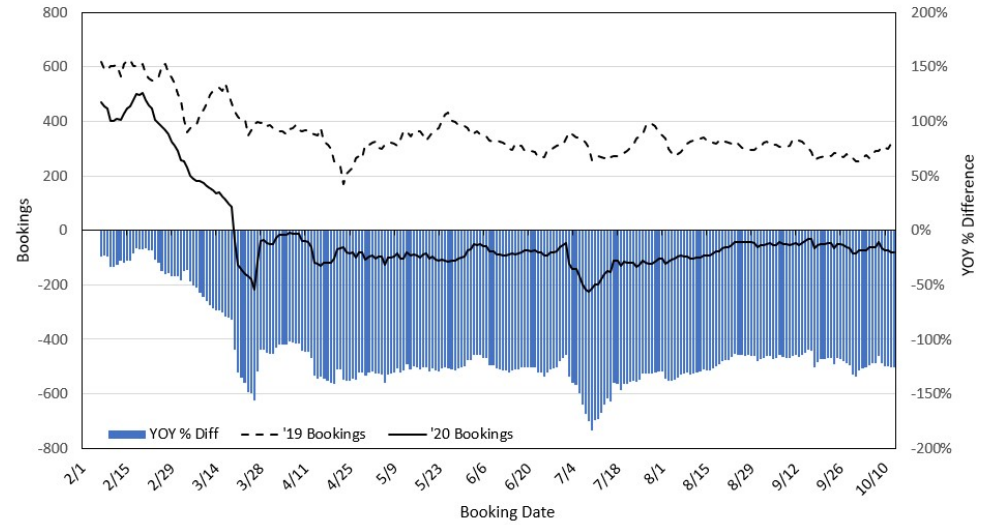
Travel Agency Bookings to Hawaii for Future Arrivals*
Based on a 7-day Moving Average, 2020 vs 2019
Canada



*Future Arrivals refers to all arrivals that are 'future' relative to the referenced booking date.
 Source: Global Agency Pro

Update: Oct 13, 2020

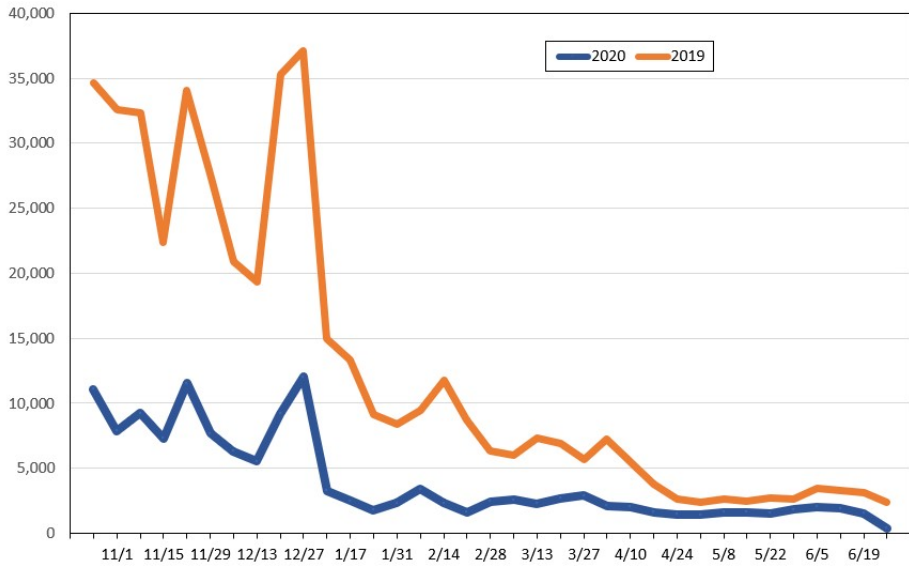
Travel Agency Bookings to Hawaii for Future Arrivals*
Based on a 7-day Moving Average, 2020 vs 2019
Australia



*Future Arrivals refers to all arrivals that are 'future' relative to the referenced booking date.
 Source: Global Agency Pro

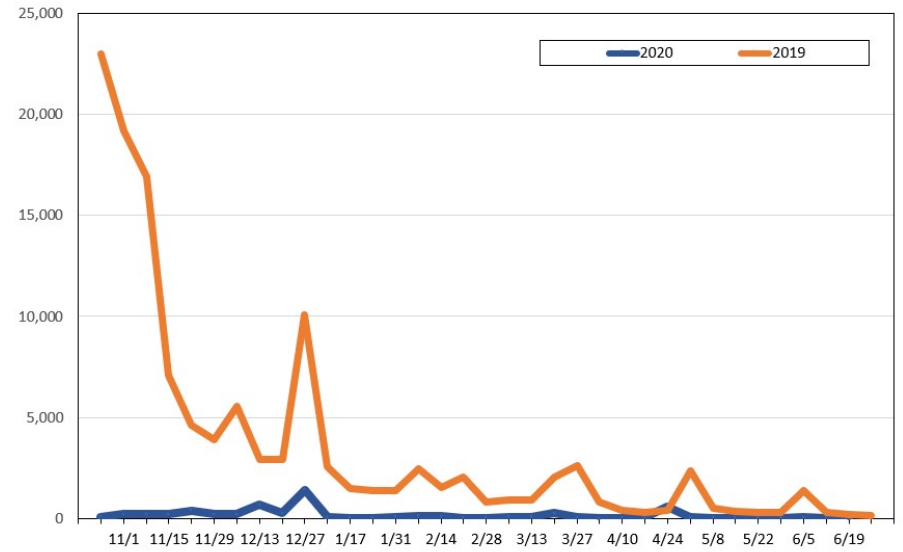
Update: Oct 13, 2020

Travel Agency Weekly Bookings for Future Travel to Hawai'i as of October 13, 2020
U.S.



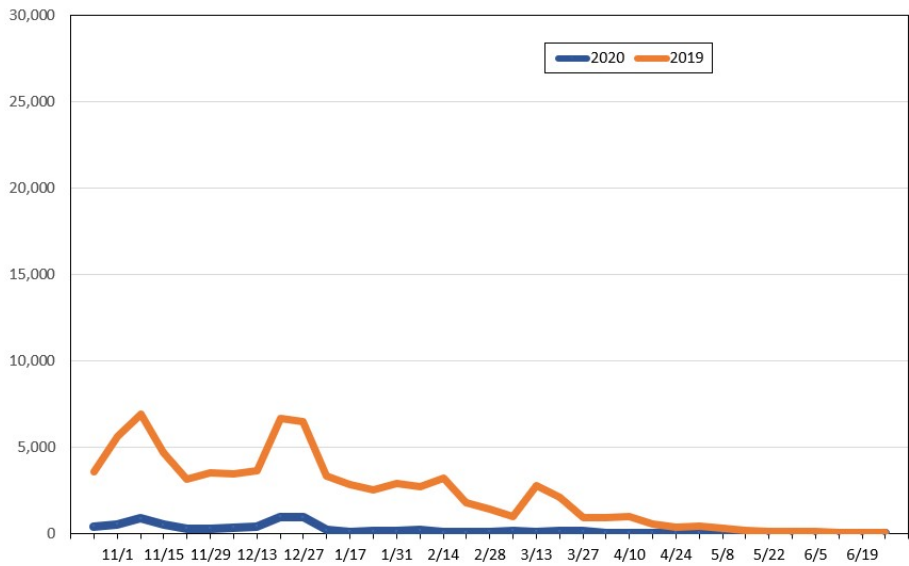
Source: Global Agency Pro, as of October 13, 2020

Travel Agency Weekly Bookings for Future Travel to Hawai'i as of October 13, 2020
Japan



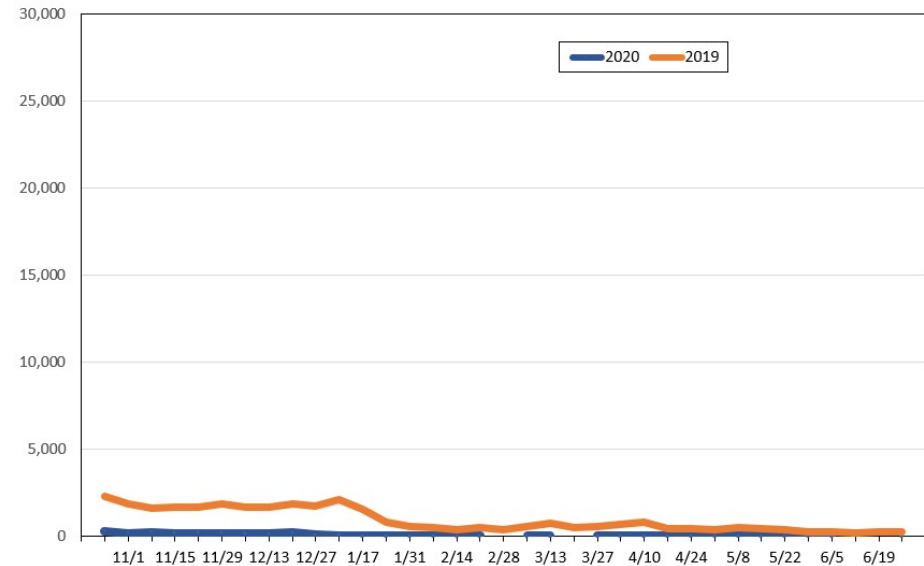
Source: Global Agency Pro, as of October 13, 2020

Travel Agency Weekly Bookings for Future Travel to Hawai'i as of October 13, 2020
Canada



Source: Global Agency Pro, as of October 13, 2020

Travel Agency Weekly Bookings for Future Travel to Hawai'i as of October 13, 2020
Australia



Source: Global Agency Pro, as of October 13, 2020