

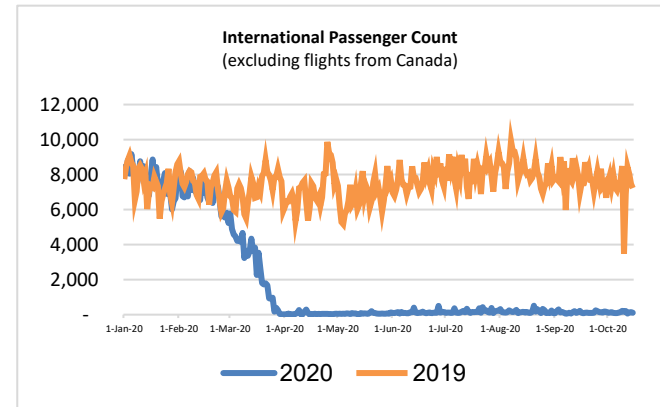
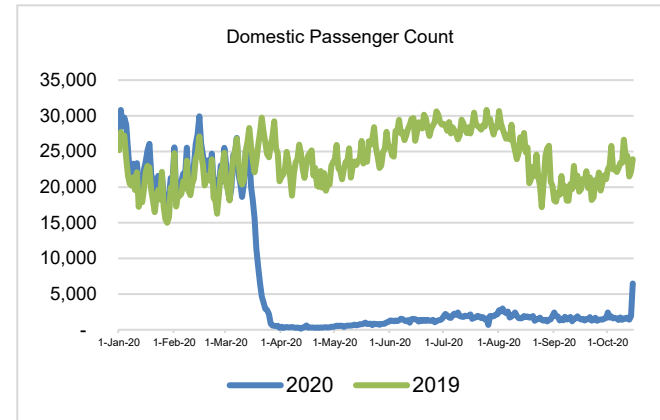
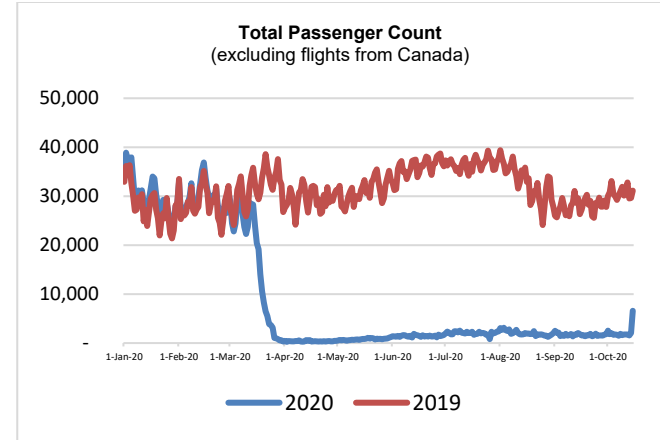
# HTA COVID-19 UPDATE

(Issued: 10/16/20 @ 4:00pm)

Reason for Trip by Arrival Airport - Transpacific Screened Passengers as of 10/15/20	Honolulu (HNL)	Kahului (OGG)	Kona (KOA)	Lihue (LIH)	Grand Total
Airline Crew	336	78	48	40	502
Corporate Meeting	1	1	0	0	2
Essential Worker	110	22	13	4	149
Honeymoon	27	15	3	2	47
Incentive Trip	0	0	0	1	1
Intended Resident	158	52	58	28	296
Military or Federal Government	185	1	1	10	197
Other	85	21	18	13	137
Other Business	235	72	80	31	418
Pleasure/Vacation	1,476	953	358	407	3,194
Returning Resident	821	225	182	59	1,287
Sports Event	2	2	0	0	4
To Attend School	6	0	6	1	13
To Get Married	2	18	3	4	27
Transit	339	3	0	2	344
Visiting Friends or Relatives	1,121	216	174	95	1,606
<b>Grand Total</b>	<b>4,904</b>	<b>1,679</b>	<b>944</b>	<b>697</b>	<b>8,224</b>

Source: Safe Travels program developed by the State of Hawaii Office of Enterprise Technology Services

Note: The data is preliminary and subject to change



Market Impact Update: <https://www.dropbox.com/10/16/20 HTA COVID19 Update>

## Novel Coronavirus in Hawaii

### COVID-19 Positive Cases

Cumulative totals as of 12:00 noon on October 16, 2020

Total Cases	13,853 (89 new)
Required Hospitalization	988 ‡
Death	185
Released from Isolation	10947 §
Hawaii County	1,026
Honolulu County	12,317
Kauai County	59
Maui County	411 †
Pending	0
Residents diagnosed outside of Hawaii	40

### Footnotes for COVID-19 Cases

\*As a result of updated information, one case was recategorized from Honolulu to Hawaii.

†One case is a Lanai resident whose exposure is on Maui Island and who will be remaining on Maui Island for the interim.

‡Includes Hawaii residents hospitalized out of state.

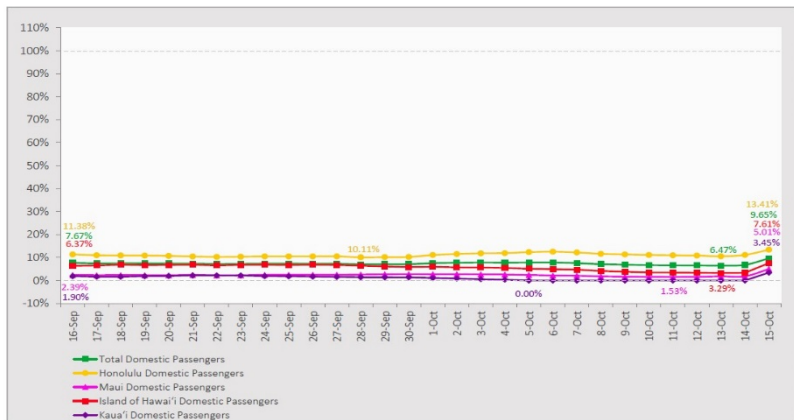
§Includes cases that meet isolation release criteria (Isolation should be maintained until at least 24 hours after resolution of fever and myalgia without the use of antipyretics OR at least 10 days have passed since symptom onset, whichever is longer). (The cases that have died and one case that has left the jurisdiction have been removed from these counts). Positive cases include confirmed cases, and Hawaii residents and non-residents; data are preliminary and subject to change. Note that CDC provides case counts according to states of residence.

### Daily Passenger Count Table

10/15/2020	Domestic	International	Total
Oahu	3607	105	3712
Maui	1507		1507
Island of Hawaii	841		841
Kauai	534		534
State	6489	105	6594

### 7-Day Domestic by Island Moving Average Daily Passenger Volume

2020 Volume as Percentage of 2019 Volume  
Through October 15, 2020



Source: HVCB analysis based on data from DBEDT  
Note: Passenger volume figures include both visitors and residents.

### Domestic by Island Month-to-Date and Year-to-Date Daily Passenger Volume

2020 Volume versus 2019 Volume  
Through October 15, 2020

October 2020 (Month-to-Date through October 15)

	2020	2019	Volume Change	Percent Change
Honolulu	24,027	186,719	-162,692	-87.1%
Maui County	3,221	93,588	-90,367	-96.6%
Island of Hawai'i	2,212	35,699	-33,487	-93.8%
Kaua'i	534	31,605	-31,071	-98.3%
<b>Total</b>	<b>29,995</b>	<b>347,611</b>	<b>-317,616</b>	<b>-91.4%</b>

2020 (Year-to-Date through October 15)

	2020	2019	Volume Change	Percent Change
Honolulu	1,188,305	3,665,969	-2,477,664	-67.6%
Maui County	460,901	1,787,658	-1,326,757	-74.2%
Island of Hawai'i	231,775	788,833	-557,058	-70.6%
Kaua'i	152,598	611,066	-458,468	-75.0%
<b>Total</b>	<b>2,033,579</b>	<b>6,853,526</b>	<b>-4,819,947</b>	<b>-70.3%</b>

Source: HVCB analysis based on data from DBEDT  
Note: Passenger volume figures include both visitors and residents. Total includes other international passengers. 2020 includes one additional day due to Leap Year (February 29th, 2020).

## News Highlights

October 16, 2020

Honolulu Star Advertiser:

[Editorial: Pre-travel program still too confusing](#)

Honolulu Star Advertiser: [Oahu on track to move to Tier 2 of reopening strategy](#)

Hawaii News Now: [Ige urges vigilance as Hawaii launches pre-travel testing program](#)

KHON2: [Visitors face long lines, long wait times at airports on first day of pre-travel testing program](#)

KITV4: [Business organizations welcome back visitors with "Makaukau – We Are Ready" campaign](#)

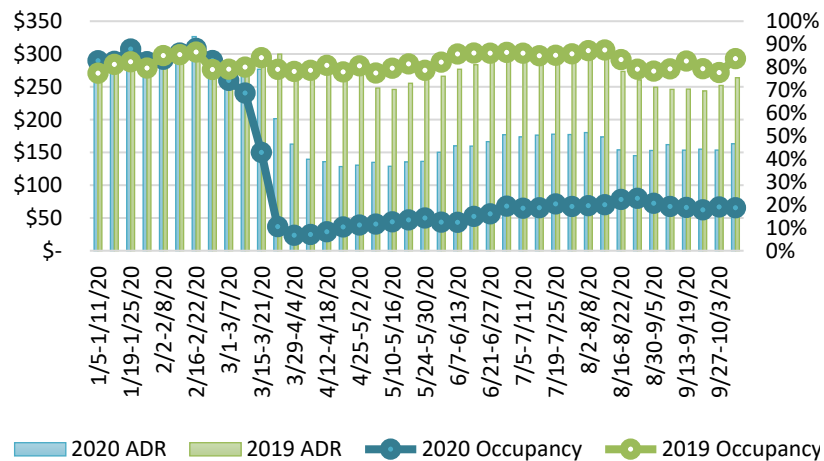
Maui Now: [Mayor Victorino Declares 'Rebirth of Our Visitor Industry' with Launch of Safe Travels Program](#)

Hawaii Tribune-Herald: [Few hiccups at Hilo airport as trans-Pacific travelers return](#)

Los Angeles Times: [Hawaii reopens for tourism amid more masks, fewer leis](#)

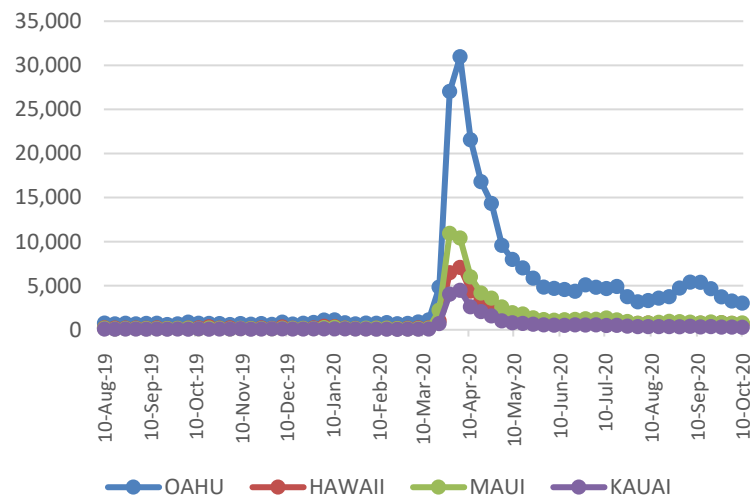
Good Morning America: [Hawaii opens up to vacationers after lifting COVID restrictions](#)

### State of Hawai'i Hotel Performance by Week - 2020 vs 2019



Source: STR, Inc. © Copyright 2020 Hawai'i Tourism Authority

### 2020 Initial Weekly Unemployment Claims by Island



### Weekly Unemployment Initial Claims: October 10, 2020

State of Hawaii	4,896
C&C of Oahu	3,016
Hawaii County	689
Maui County	757
Kauai County	283
Agent (filed in Hawaii against another state)	151

### Hawaii Hotel Performance Info:

For the week of October 04 – October 10, 2020

	Occupancy	ADR	RevPAR
State of Hawaii	18.7%	\$ 163.14	\$ 30.58
Oahu	19.3%	\$ 151.83	\$ 29.26
Maui County	16.2%	\$ 201.55	\$ 32.59
Kauai County	17.7%	\$ 168.20	\$ 29.83
Island of Hawaii	22.8%	\$ 142.63	\$ 32.50

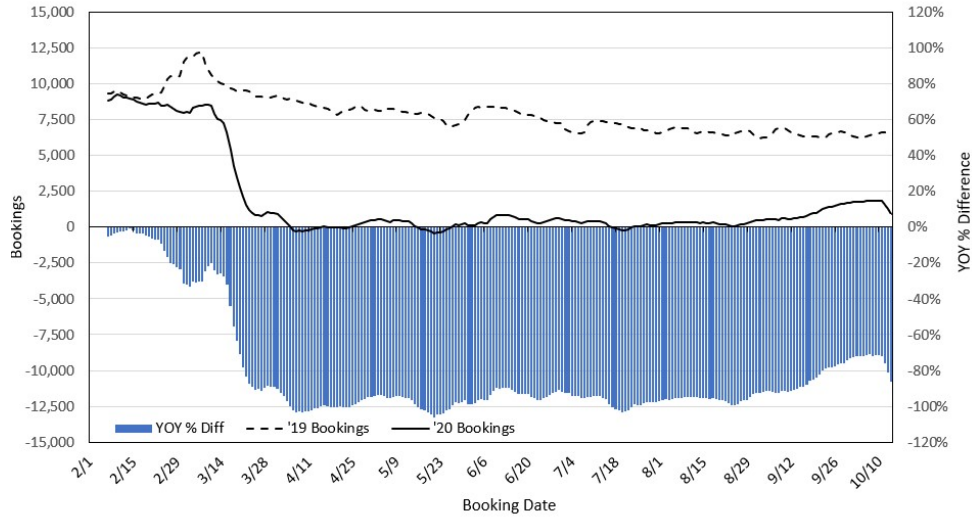
**Helpful Resources**  
Department of Health  
<https://hawaiiicovid19.com/>

Department of Health  
<https://health.hawaii.gov/docd/advisories/novel-coronavirus-2019>

Dept. of Business, Economic Development & Tourism  
<https://dbedt.hawaii.gov/economic/covid19/>

Department of Transportation  
<https://hidot.hawaii.gov/coronavirus/>

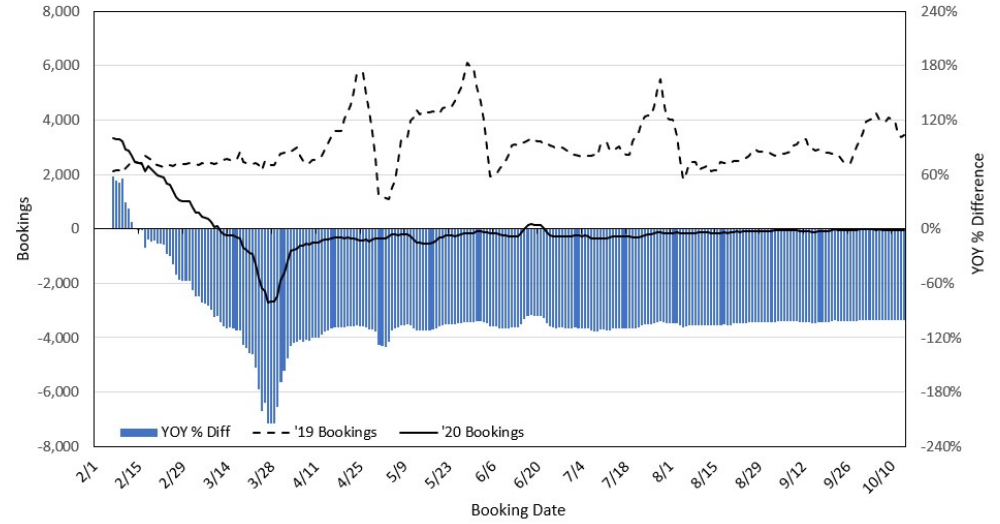
**Travel Agency Bookings to Hawaii for Future Arrivals\***  
**Based on a 7-day Moving Average, 2020 vs 2019**  
**U.S.**



\*Future Arrivals refers to all arrivals that are 'future' relative to the referenced booking date.  
 Source: Global Agency Pro

Update: Oct 14, 2020

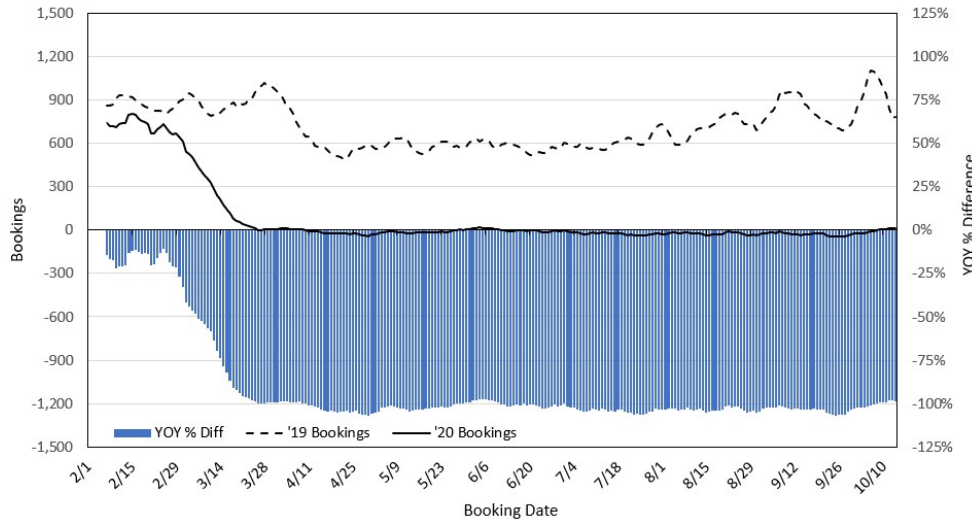
**Travel Agency Bookings to Hawaii for Future Arrivals\***  
**Based on a 7-day Moving Average, 2020 vs 2019**  
**Japan**



\*Future Arrivals refers to all arrivals that are 'future' relative to the referenced booking date.  
 Source: Global Agency Pro

Update: Oct 14, 2020

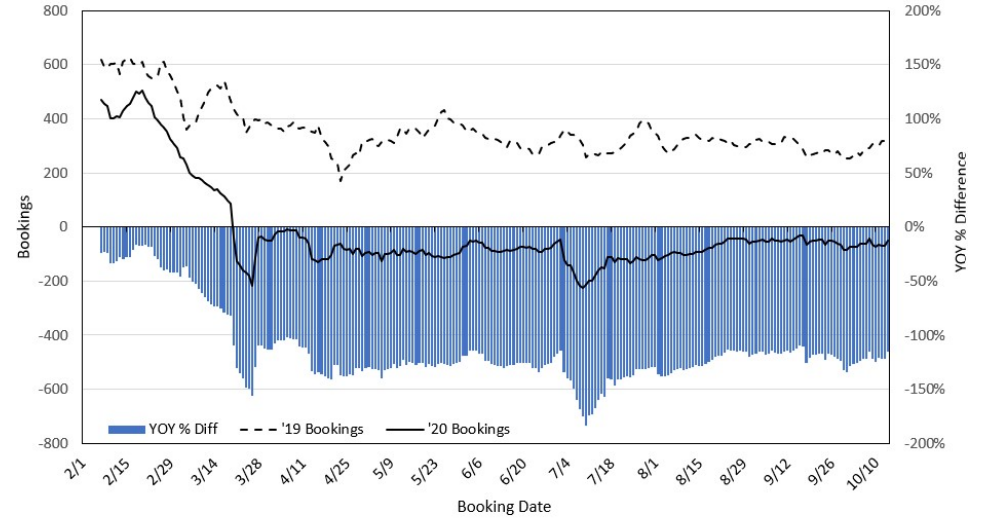
**Travel Agency Bookings to Hawaii for Future Arrivals\***  
**Based on a 7-day Moving Average, 2020 vs 2019**  
**Canada**



\*Future Arrivals refers to all arrivals that are 'future' relative to the referenced booking date.  
 Source: Global Agency Pro

Update: Oct 14, 2020

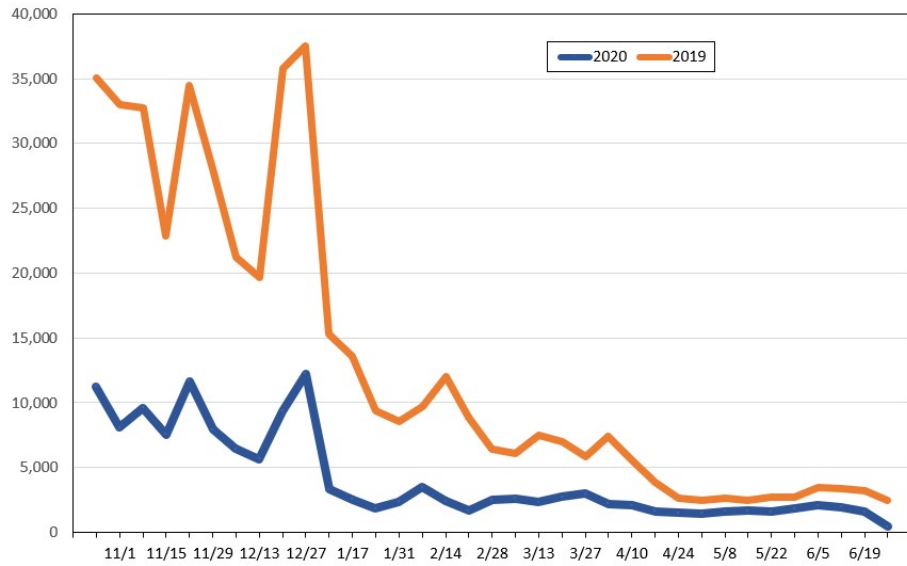
**Travel Agency Bookings to Hawaii for Future Arrivals\***  
**Based on a 7-day Moving Average, 2020 vs 2019**  
**Australia**



\*Future Arrivals refers to all arrivals that are 'future' relative to the referenced booking date.  
 Source: Global Agency Pro

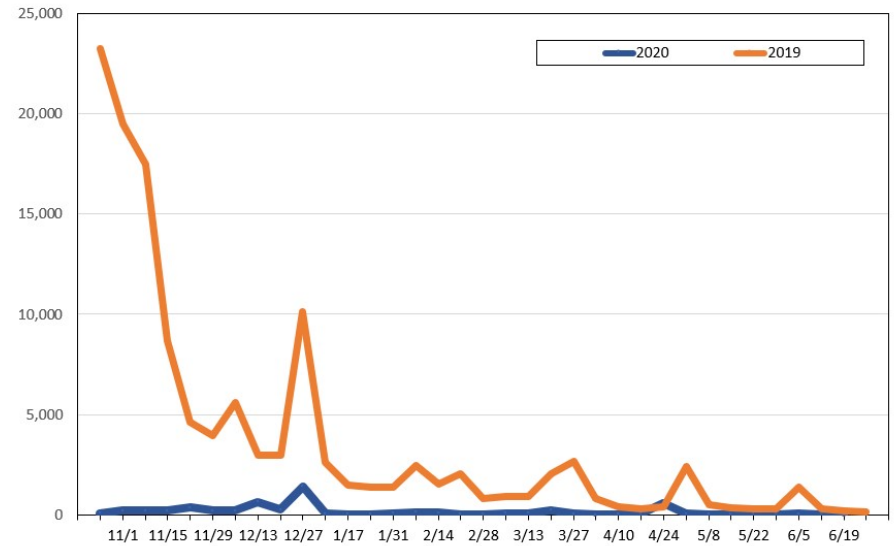
Update: Oct 14, 2020

**Travel Agency Weekly Bookings for Future Travel to Hawai'i as of October 14, 2020**  
U.S.



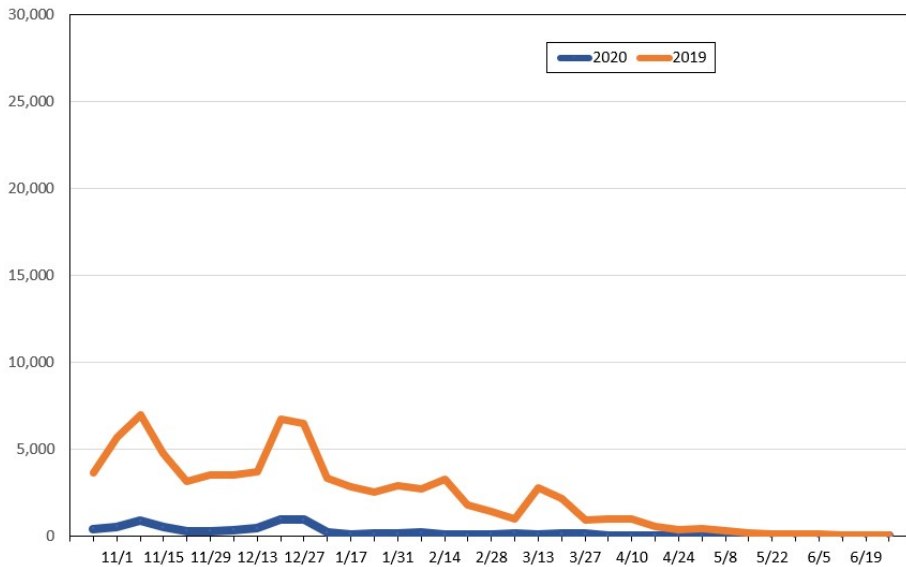
Source: Global Agency Pro, as of October 14, 2020

**Travel Agency Weekly Bookings for Future Travel to Hawai'i as of October 14, 2020**  
Japan



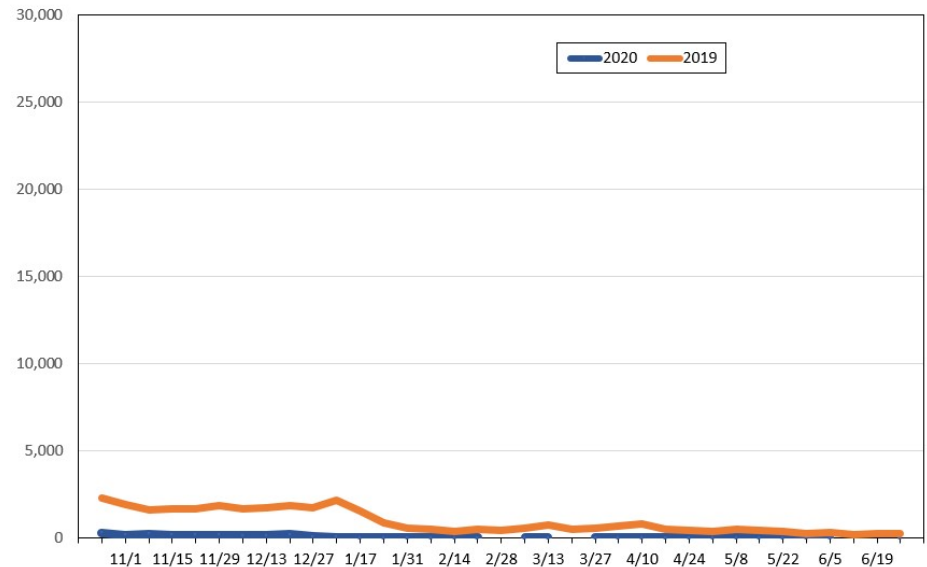
Source: Global Agency Pro, as of October 14, 2020

**Travel Agency Weekly Bookings for Future Travel to Hawai'i as of October 14, 2020**  
Canada



Source: Global Agency Pro, as of October 14, 2020

**Travel Agency Weekly Bookings for Future Travel to Hawai'i as of October 14, 2020**  
Australia



Source: Global Agency Pro, as of October 14, 2020