

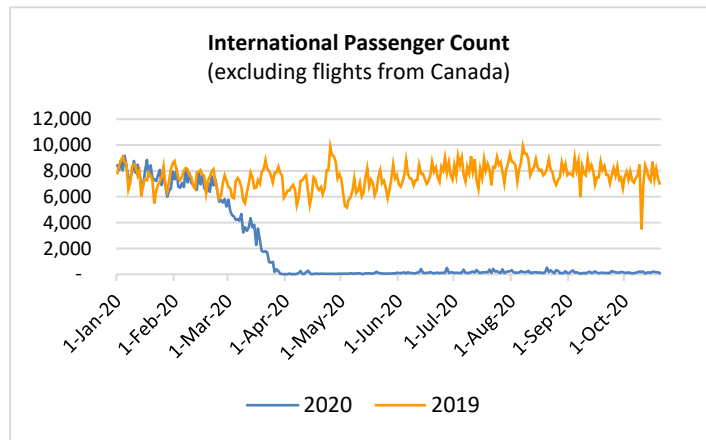
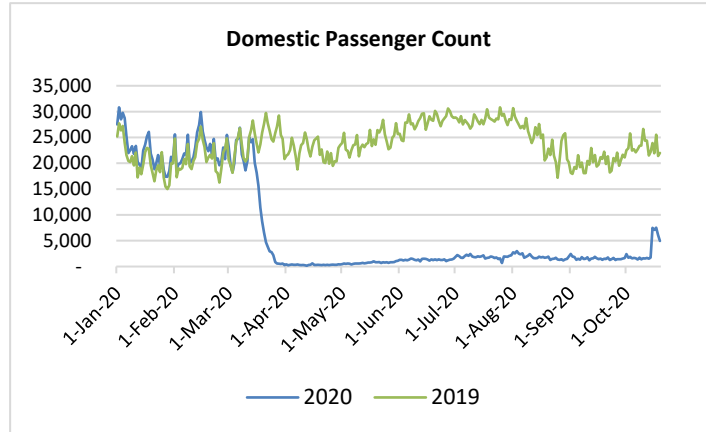
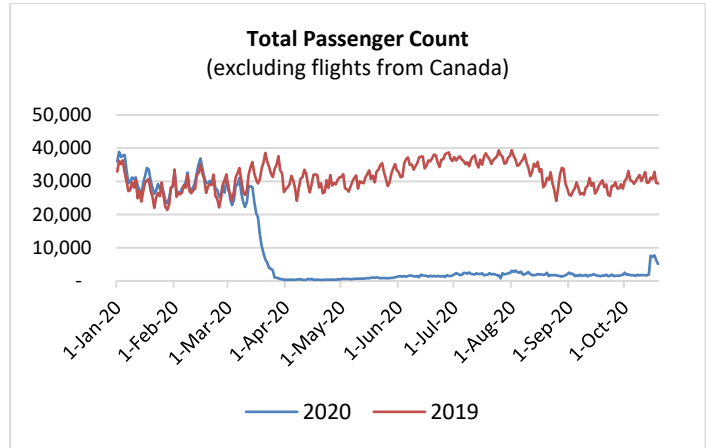
HTA COVID-19 UPDATE

(Issued: 10/20/20 @ 4:00pm)

Reason for Trip by Arrival Airport - Transpacific Screened Passengers as of 10/19/20	Honolulu (HNL)	Kahului (OGG)	Kona (KOA)	Lihue (LIH)	Grand Total
Airline Crew	277	65	48	29	419
Corporate Meeting	4	1	0	2	7
Essential Worker	140	36	15	12	203
Honeymoon	17	18	1	13	49
Incentive Trip	1	0	0	0	1
Intended Resident	104	38	44	20	206
Military or Federal Government	207	1	2	1	211
Other	34	16	12	3	65
Other Business	138	43	42	24	247
Pleasure/Vacation	703	695	187	383	1,968
Returning Resident	960	170	116	58	1,304
Sports Event	2	1	0	0	3
To Attend School	7	1	0	0	8
To Get Married	1	0	1	0	2
Transit	172	1	1	1	175
Visiting Friends or Relatives	665	155	100	70	990
Grand Total	3,432	1,241	569	616	5,858

Source: Safe Travels program developed by the State of Hawaii Office of Enterprise Technology Services

Note: The data is preliminary and subject to change



Market Impact Update: <https://www.dropbox.com/10/20/20 HTA COVID19 Update>

Novel Coronavirus in Hawaii

COVID-19 Positive Cases

Cumulative totals as of 12:00 noon on October 20, 2020

Total Cases	14,156 (91 new)
Required Hospitalization	1,025‡
Death	189
Released from Isolation	11,150§
Hawaii County	1,083
Honolulu County	12,552
Kauai County	60
Maui County	413†
Pending	0
Residents diagnosed outside of Hawaii	48

Footnotes for COVID-19 Cases

*As a result of updated information, one case was recategorized from Honolulu to Hawaii.

†One case is a Lanai resident whose exposure is on Maui Island and who will be remaining on Maui Island for the interim.

‡Includes Hawaii residents hospitalized out of state.

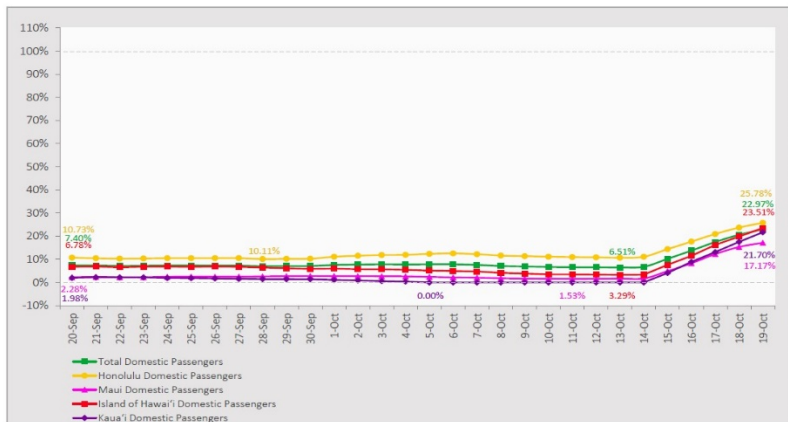
§Includes cases that meet isolation release criteria (Isolation should be maintained until at least 24 hours after resolution of fever and myalgia without the use of antipyretics OR at least 10 days have passed since symptom onset, whichever is longer). (The cases that have died and one case that has left the jurisdiction have been removed from these counts). Positive cases include confirmed cases, and Hawaii residents and non-residents; data are preliminary and subject to change. Note that CDC provides case counts according to states of residence.

Daily Passenger Count Table

10/19/2020	Domestic	International	Total
Oahu	3089	159	3248
Maui	783		783
Island of Hawaii	500		500
Kauai	577		577
State	4949	159	5108

7-Day Domestic by Island Moving Average Daily Passenger Volume

2020 Volume as Percentage of 2019 Volume
Through October 19, 2020



Source: HVCB analysis based on data from DBEDT
Note: Passenger volume figures include both visitors and residents.

Domestic by Island Month-to-Date and Year-to-Date Daily Passenger Volume

2020 Volume versus 2019 Volume
Through October 19, 2020

October 2020 (Month-to-Date through October 19)

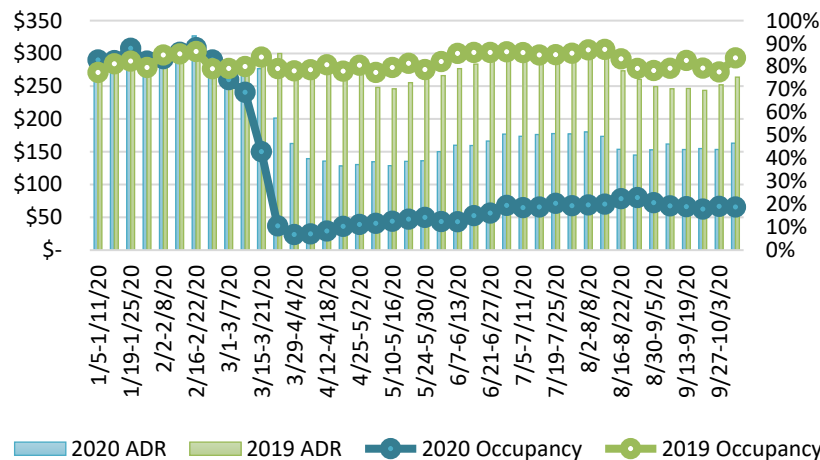
	2020	2019	Volume Change	Percent Change
Honolulu	40,035	237,123	-197,088	-83.1%
Maui County	8,433	118,494	-110,061	-92.9%
Island of Hawai'i	4,891	45,264	-40,373	-89.2%
Kaua'i	3,197	40,256	-37,059	-92.1%
Total	56,556	441,137	-384,581	-87.2%

2020 (Year-to-Date through October 19)

	2020	2019	Volume Change	Percent Change
Honolulu	1,204,313	3,716,373	-2,512,060	-67.6%
Maui County	466,113	1,812,564	-1,346,451	-74.3%
Island of Hawai'i	234,454	798,398	-563,944	-70.6%
Kaua'i	155,261	619,717	-464,456	-74.9%
Total	2,060,141	6,947,052	-4,886,912	-70.3%

Source: HVCB analysis based on data from DBEDT
Note: Passenger volume figures include both visitors and residents. Total includes other international passengers. 2020 includes one additional day due to Leap Year (February 29th, 2020).

State of Hawai'i Hotel Performance by Week - 2020 vs 2019



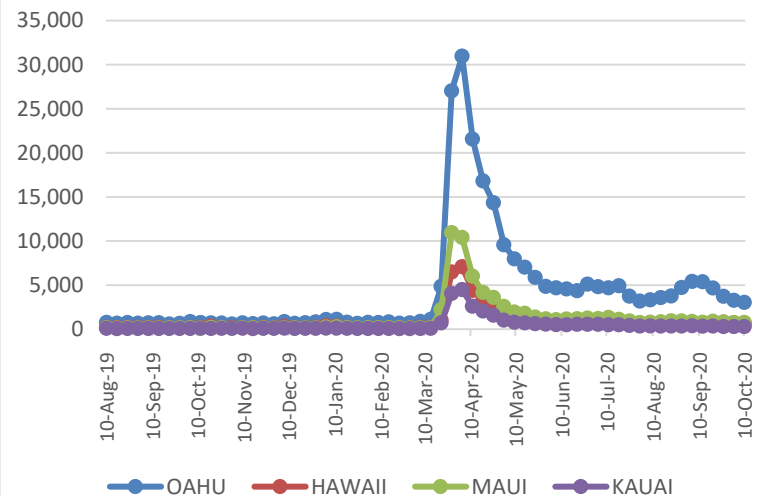
Source: STR, Inc. © Copyright 2020 Hawai'i Tourism Authority

Hawaii Hotel Performance Info:

For the week of October 04 – October 10, 2020

	Occupancy	ADR	RevPAR
State of Hawaii	18.7%	\$ 163.14	\$ 30.58
Oahu	19.3%	\$ 151.83	\$ 29.26
Maui County	16.2%	\$ 201.55	\$ 32.59
Kauai County	17.7%	\$ 168.20	\$ 29.83
Island of Hawaii	22.8%	\$ 142.63	\$ 32.50

2020 Initial Weekly Unemployment Claims by Island



Weekly Unemployment Initial Claims: October 10, 2020

State of Hawaii	4,896
C&C of Oahu	3,016
Hawaii County	689
Maui County	757
Kauai County	283
Agent (filed in Hawaii against another state)	151

News Highlights

October 20, 2020

Honolulu Civil Beat: [Honolulu: You Need To Wear Masks Outside, Even With Your Own Family](#)

Honolulu Civil Beat: [Denby Fawcett: Hawaii Tourism Needs To Become Smarter](#)

Hawaii Magazine: [What To Expect When You Arrive at the Airport in Honolulu](#)

The Maui News: [County: About 200 travelers took post-travel test](#)

The Garden Island: [Post-travel test sites go live](#)

West Hawaii Today: [Ige: Interisland travel could open by end of year](#)

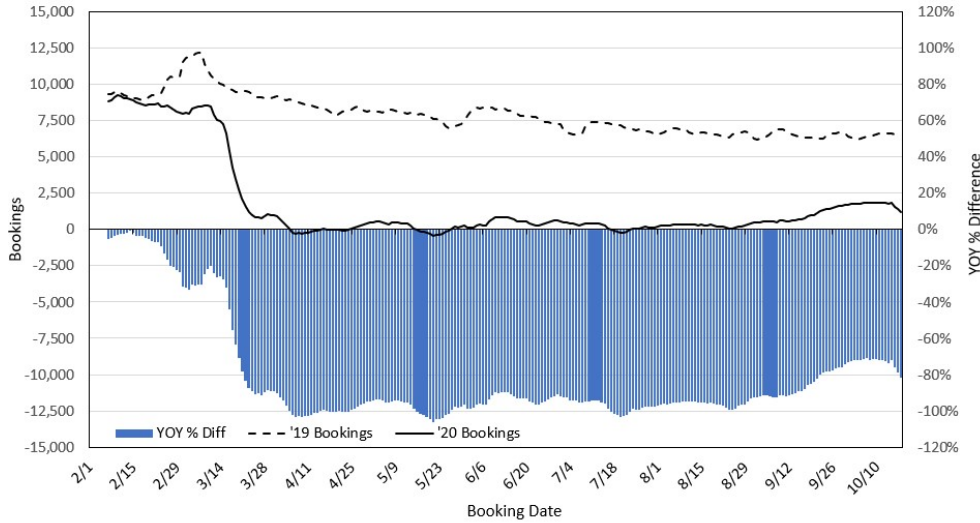
Travel + Leisure: [Hawaii Reopens to Tourists With 8,000 People Arriving on First Day](#)

NewsNation (WGA America): [Traveling to Hawaii](#)

CNBC: [Hawaii requires 72-hour pre-Covid test for travelers](#)

Aviation Pros: [High Passenger Counts for Tourism's Restart Strain the Airport Entry Process, Especially on Hawaii Island](#)

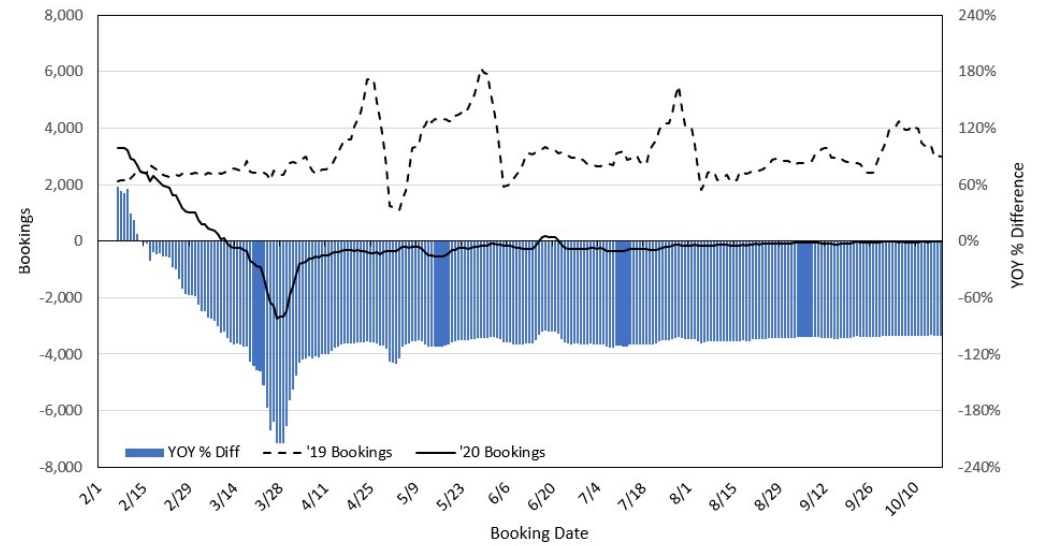
Travel Agency Bookings to Hawaii for Future Arrivals*
Based on a 7-day Moving Average, 2020 vs 2019
U.S.



*Future Arrivals refers to all arrivals that are 'future' relative to the referenced booking date.
 Source: Global Agency Pro

Update: Oct 18, 2020

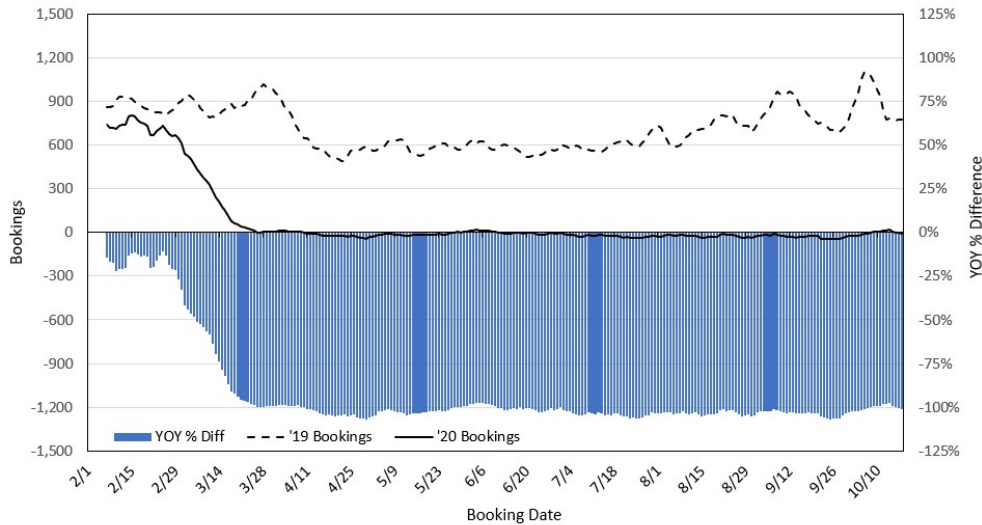
Travel Agency Bookings to Hawaii for Future Arrivals*
Based on a 7-day Moving Average, 2020 vs 2019
Japan



*Future Arrivals refers to all arrivals that are 'future' relative to the referenced booking date.
 Source: Global Agency Pro

Update: Oct 18, 2020

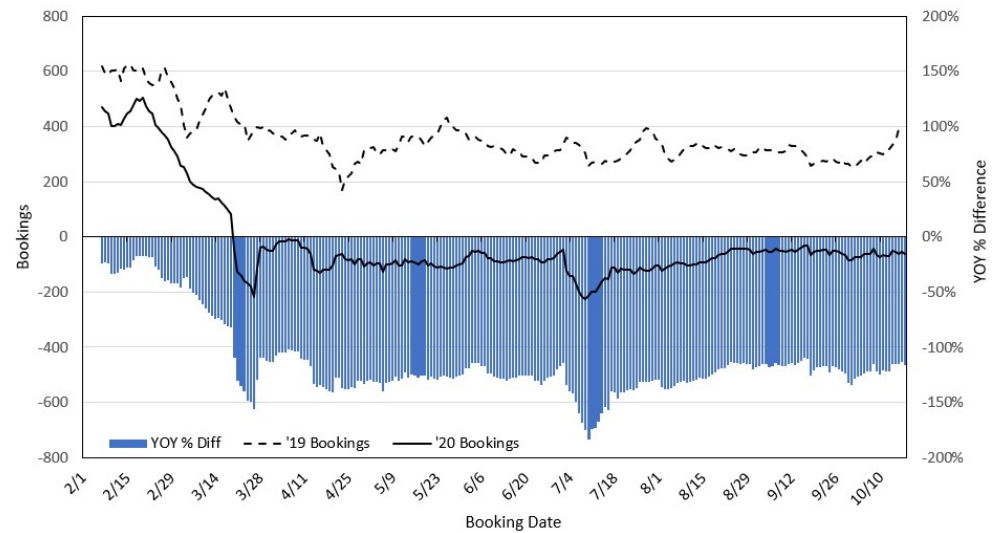
Travel Agency Bookings to Hawaii for Future Arrivals*
Based on a 7-day Moving Average, 2020 vs 2019
Canada



*Future Arrivals refers to all arrivals that are 'future' relative to the referenced booking date.
 Source: Global Agency Pro

Update: Oct 18, 2020

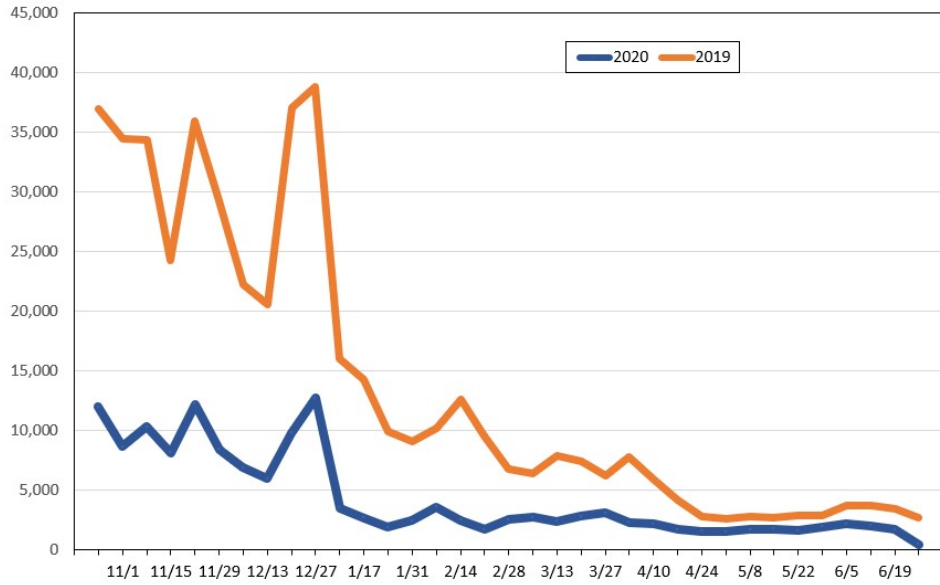
Travel Agency Bookings to Hawaii for Future Arrivals*
Based on a 7-day Moving Average, 2020 vs 2019
Australia



*Future Arrivals refers to all arrivals that are 'future' relative to the referenced booking date.
 Source: Global Agency Pro

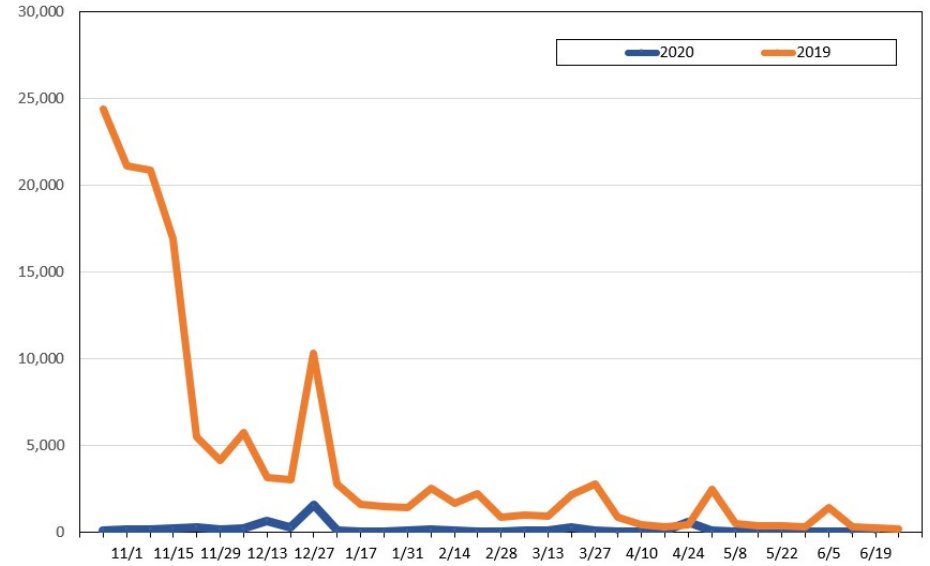
Update: Oct 18, 2020

Travel Agency Weekly Bookings for Future Travel to Hawai'i as of October 18, 2020
U.S.



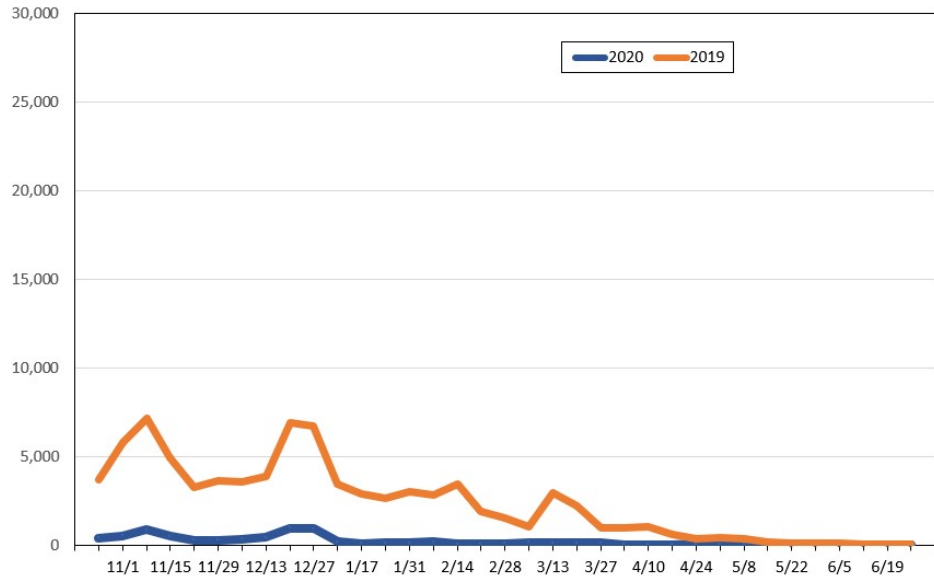
Source: Global Agency Pro, as of October 18, 2020

Travel Agency Weekly Bookings for Future Travel to Hawai'i as of October 18, 2020
Japan



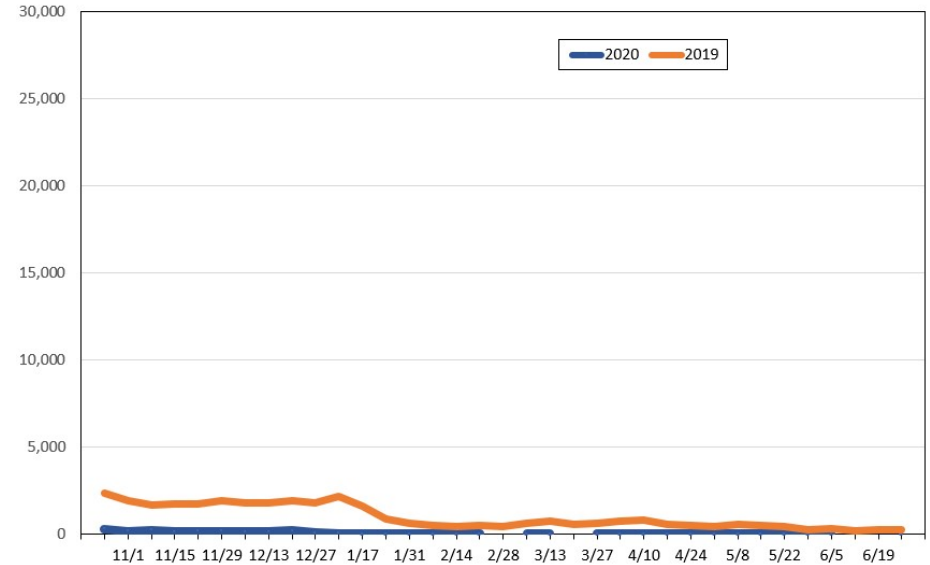
Source: Global Agency Pro, as of October 18, 2020

Travel Agency Weekly Bookings for Future Travel to Hawai'i as of October 18, 2020
Canada



Source: Global Agency Pro, as of October 18, 2020

Travel Agency Weekly Bookings for Future Travel to Hawai'i as of October 18, 2020
Australia



Source: Global Agency Pro, as of October 18, 2020