

# HTA COVID-19 UPDATE

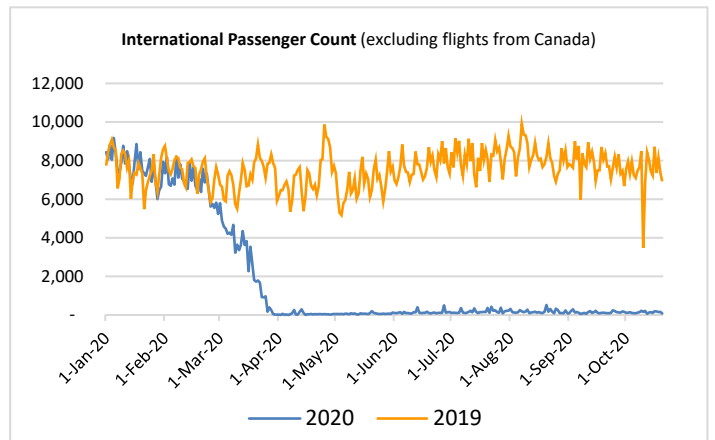
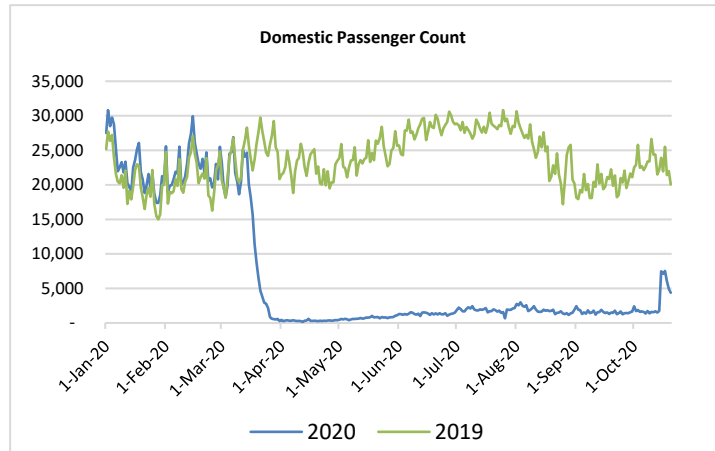
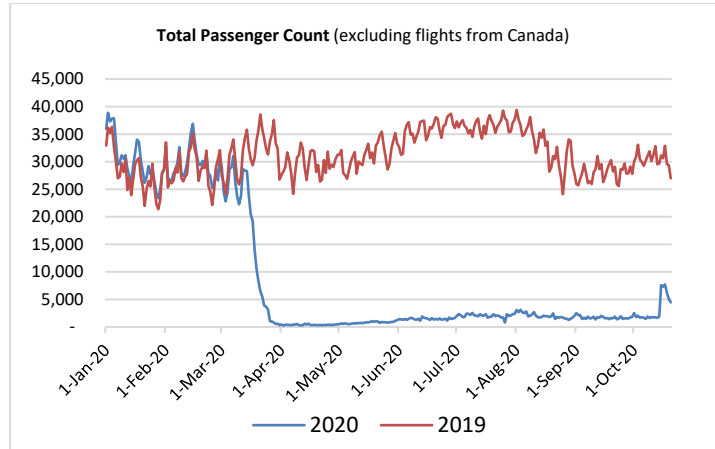
(Issued: 10/21/20 @ 4:00pm)

Reason for Trip by Arrival Airport - Transpacific Screened Passengers as of 10/20/20	Honolulu (HNL)	Kahului (OGG)	Kona (KOA)	Lihue (LIH)	Grand Total
Airline Crew	277	62	42	33	414
Corporate Meeting	3	0	0	0	3
Essential Worker	90	27	5	0	122
Honeymoon	20	10	2	6	38
Incentive Trip	5	2	0	0	7
Intended Resident	98	27	26	13	164
Military or Federal Government	162	0	1	1	164
Other	48	13	4	11	76
Other Business	106	48	18	14	186
Pleasure/Vacation	642	583	150	275	1,650
Returning Resident	740	163	119	49	1,071
To Attend School	11	0	0	0	11
To Get Married	4	3	0	0	7
Transit	202	2	1	0	205
Visiting Friends or Relatives	670	148	101	68	987
<b>Grand Total</b>	<b>3,078</b>	<b>1,088</b>	<b>469</b>	<b>470</b>	<b>5,105</b>

**Source:** Safe Travels program developed by the State of Hawaii Office of Enterprise Technology Services

**Note:** The data is preliminary and subject to change

Market Impact Update: <https://www.dropbox.com/10/21/20 HTA COVID19 Update>



## Daily Passenger Count Table

10/20/2020	Domestic	International	Total
Oahu	2910	75	2985
Maui	830		830
Island of Hawaii	261		261
Kauai	389		389
State	4390	75	4465

## Novel Coronavirus in Hawaii

### COVID-19 Positive Cases

Cumulative totals as of 12:00 noon on October 21, 2020

<b>Total Cases</b>	<b>14,233 (78 new)</b>
Required Hospitalization	1,033‡
Death	203
Released from Isolation	11,188§
Hawaii County	1,091
Honolulu County	12,617
Kauai County	60
Maui County	417†
Pending	0
Residents diagnosed outside of Hawaii	48

### Footnotes for COVID-19 Cases

\*As a result of updated information, one case was recategorized from Honolulu to Hawaii.

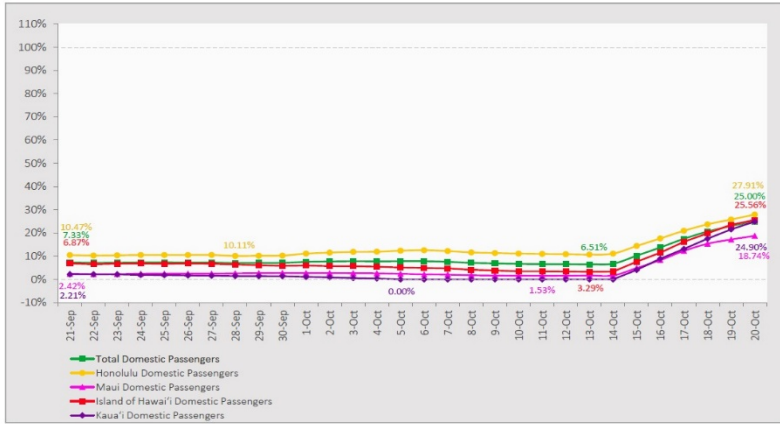
†One case is a Lanai resident whose exposure is on Maui Island and who will be remaining on Maui Island for the interim.

‡Includes Hawaii residents hospitalized out of state.

§Includes cases that meet isolation release criteria (Isolation should be maintained until at least 24 hours after resolution of fever and myalgia without the use of antipyretics OR at least 10 days have passed since symptom onset, whichever is longer). (The cases that have died and one case that has left the jurisdiction have been removed from these counts). Positive cases include confirmed cases, and Hawaii residents and non-residents; data are preliminary and subject to change. Note that CDC provides case counts according to states of residence.

### 7-Day Domestic by Island Moving Average Daily Passenger Volume

2020 Volume as Percentage of 2019 Volume  
Through October 20, 2020



Source: HVCB analysis based on data from DBEDT  
Note: Passenger volume figures include both visitors and residents.

### Domestic by Island Month-to-Date and Year-to-Date Daily Passenger Volume

2020 Volume versus 2019 Volume  
Through October 20, 2020

October 2020 (Month-to-Date through October 20)

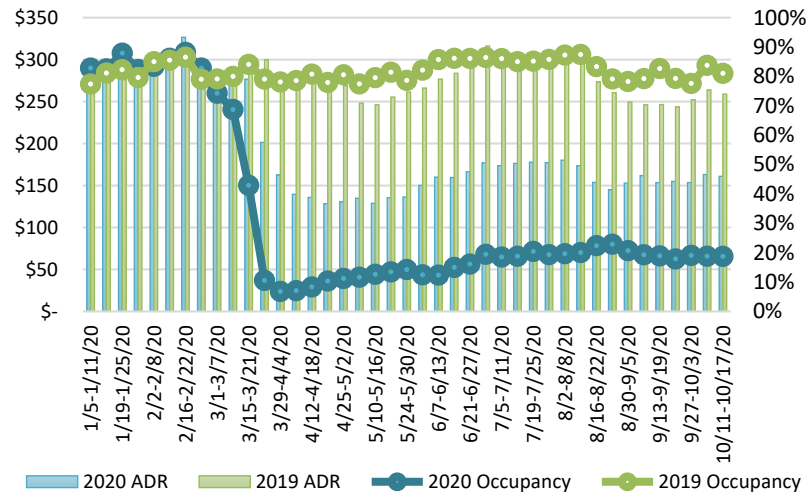
	2020	2019	Volume Change	Percent Change
Honolulu	42,945	249,267	-206,322	-82.8%
Maui County	9,263	123,710	-114,447	-92.5%
Island of Hawai'i	5,152	47,194	-42,042	-89.1%
Kaua'i	3,562	42,379	-38,817	-91.6%
<b>Total</b>	<b>60,922</b>	<b>462,550</b>	<b>-401,628</b>	<b>-86.6%</b>

2020 (Year-to-Date through October 20)

	2020	2019	Volume Change	Percent Change
Honolulu	1,207,223	3,728,517	-2,521,294	-67.6%
Maui County	466,943	1,817,780	-1,350,837	-74.3%
Island of Hawai'i	234,715	800,328	-565,613	-70.7%
Kaua'i	155,626	621,840	-466,214	-75.0%
<b>Total</b>	<b>2,064,507</b>	<b>6,968,465</b>	<b>-4,903,959</b>	<b>-70.4%</b>

Source: HVCB analysis based on data from DBEDT  
Note: Passenger volume figures include both visitors and residents. Total includes other international passengers. 2020 includes one additional day due to Leap Year (February 29th, 2020).

### State of Hawaii Hotel Performance by Week - 2020 vs 2019



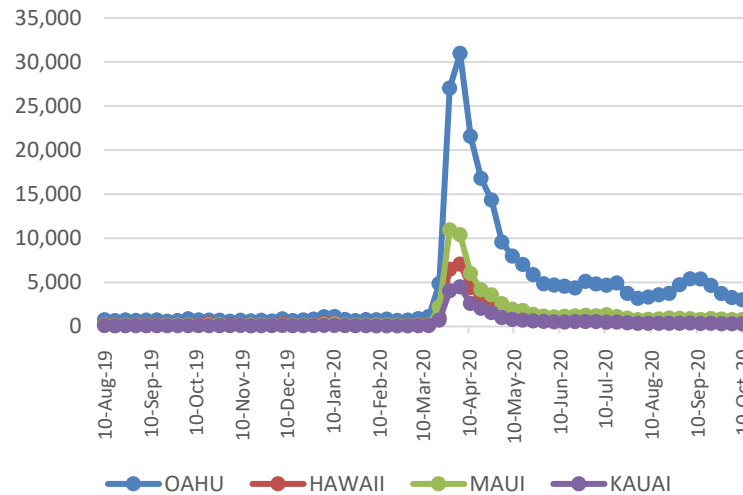
Source: STR, Inc. © Copyright 2020 Hawaii Tourism Authority

### Hawaii Hotel Performance Info:

For the week of October 11 – October 17, 2020

	Occupancy	ADR	RevPAR
<b>State of Hawaii</b>	18.7%	\$ 160.95	\$ 30.09
<b>Oahu</b>	20.0%	\$ 157.00	\$ 31.43
<b>Maui County</b>	14.5%	\$ 188.22	\$ 27.33
<b>Kauai County</b>	17.3%	\$ 162.53	\$ 28.17
<b>Island of Hawaii</b>	22.8%	\$ 138.15	\$ 31.44

### 2020 Initial Weekly Unemployment Claims by Island



### Weekly Unemployment Initial Claims: October 10, 2020

<b>State of Hawaii</b>	4,896
<b>C&amp;C of Oahu</b>	3,016
<b>Hawaii County</b>	689
<b>Maui County</b>	757
<b>Kauai County</b>	283
<b>Agent</b> (filed in Hawaii against another state)	151

## News Highlights

October 21, 2020

**Honolulu Star Advertiser:**

[Honolulu City Council bill mandates hotel employee callback rules](#)

**Hawaii News Now:** [State scrambles to address issues with website travelers use to upload COVID-19 test results](#)

**KITV4:** [HPD issued nearly 4,500 warnings since pre-travel testing program began](#)

**Maui Now:** [Breaking: Four Confirmed COVID-19 Cases on Lanai](#)

**Hawaii Tribune-Herald:** [Interisland plan unveiled; Kim: Travelers can be tested before or after arrival and avoid quarantine](#)

**West Hawaii Today:** [Interisland plan unveiled](#)

**Newsweek:** [COVID-19 Cases Are Falling Fastest in Washington, D.C. and These Four States](#)

**Travel Pulse:** [New Video Offers Tips on How to Responsibly Vacation in Hawaii](#)

**Fox News:** [2 Hawaii restaurants ban travelers from dining in despite new pre-travel program](#)

#### Helpful Resources

Department of Health  
<https://hawaiiocovid19.com/>

#### Department of Health

<https://health.hawaii.gov/docd/advisories/novel-coronavirus-2019>

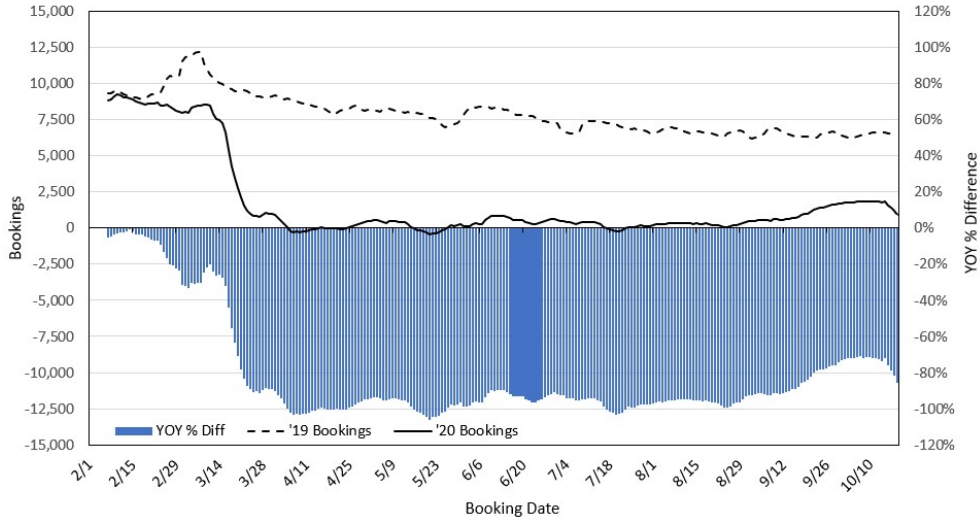
#### Dept. of Business, Economic Development & Tourism

<https://dbedt.hawaii.gov/economic/covid19/>

#### Department of Transportation

<https://hidot.hawaii.gov/coronavirus/>

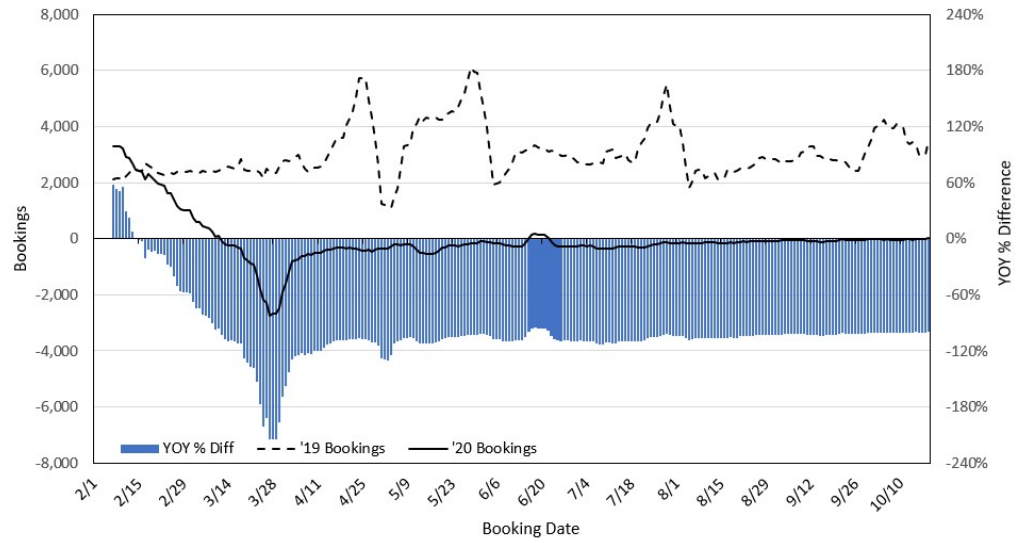
**Travel Agency Bookings to Hawaii for Future Arrivals\*  
Based on a 7-day Moving Average, 2020 vs 2019  
U.S.**



\*Future Arrivals refers to all arrivals that are 'future' relative to the referenced booking date.  
Source: Global Agency Pro

Update: Oct 19, 2020

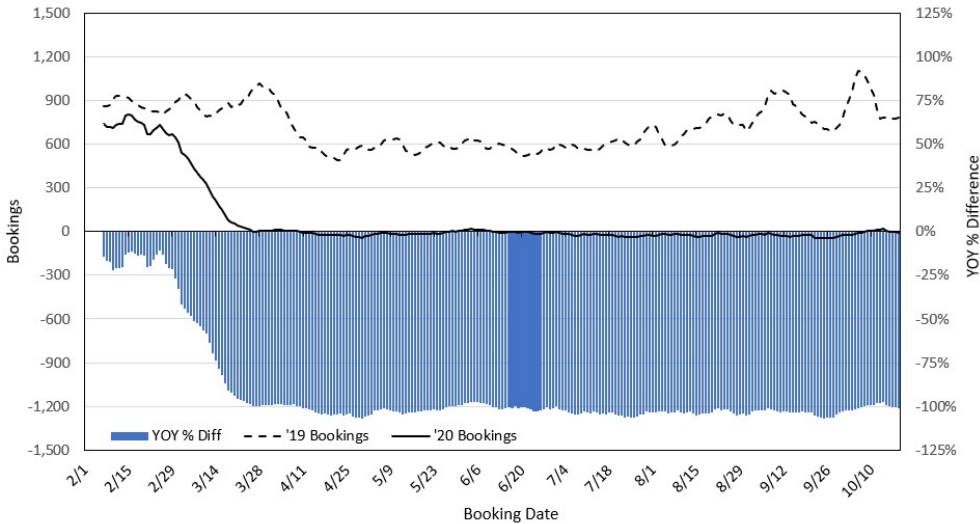
**Travel Agency Bookings to Hawaii for Future Arrivals\*  
Based on a 7-day Moving Average, 2020 vs 2019  
Japan**



\*Future Arrivals refers to all arrivals that are 'future' relative to the referenced booking date.  
Source: Global Agency Pro

Update: Oct 19, 2020

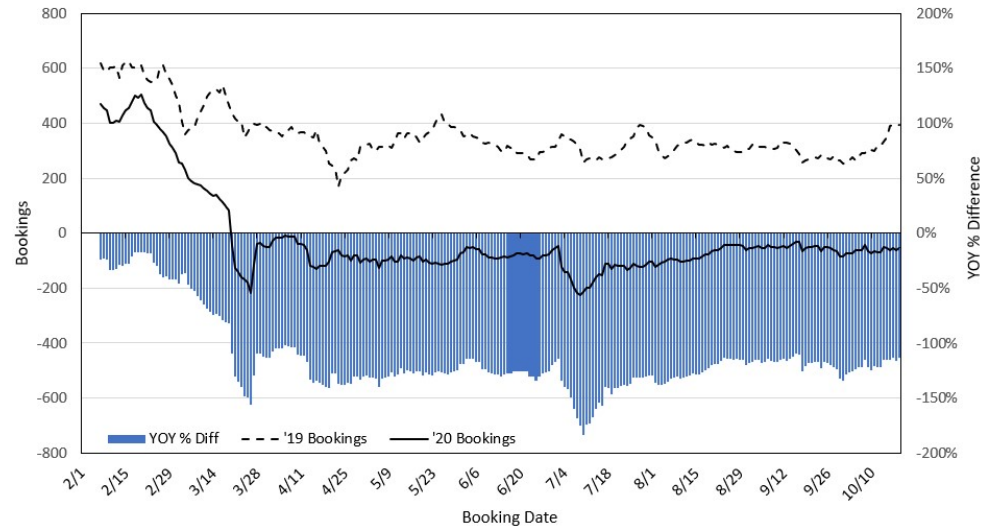
**Travel Agency Bookings to Hawaii for Future Arrivals\*  
Based on a 7-day Moving Average, 2020 vs 2019  
Canada**



\*Future Arrivals refers to all arrivals that are 'future' relative to the referenced booking date.  
Source: Global Agency Pro

Update: Oct 19, 2020

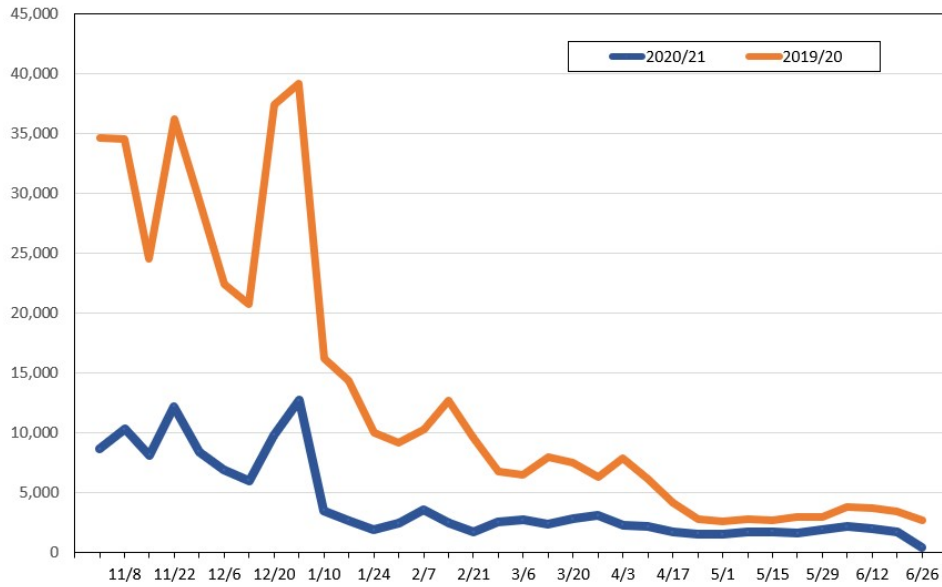
**Travel Agency Bookings to Hawaii for Future Arrivals\*  
Based on a 7-day Moving Average, 2020 vs 2019  
Australia**



\*Future Arrivals refers to all arrivals that are 'future' relative to the referenced booking date.  
Source: Global Agency Pro

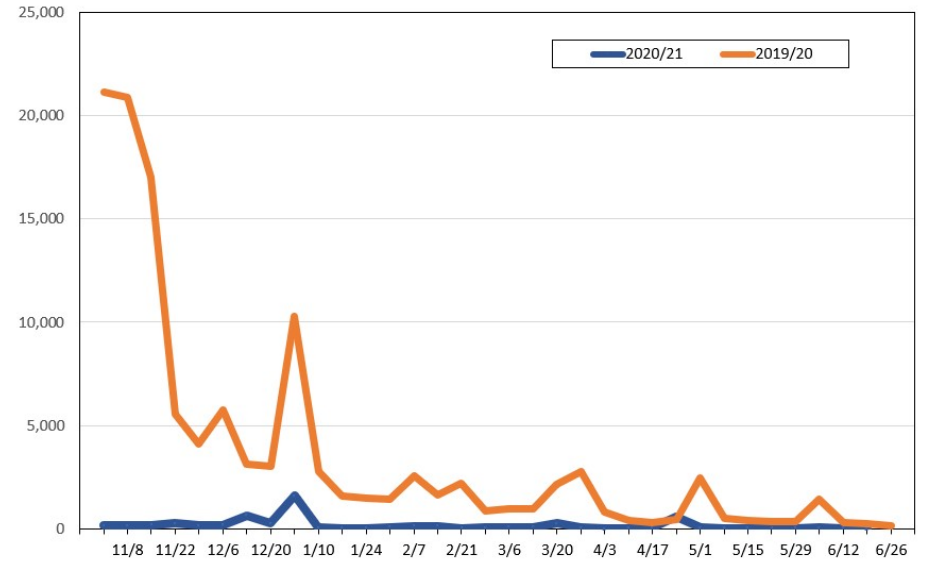
Update: Oct 19, 2020

**Travel Agency Weekly Bookings for Future Travel to Hawai'i as of October 19, 2020**  
U.S.



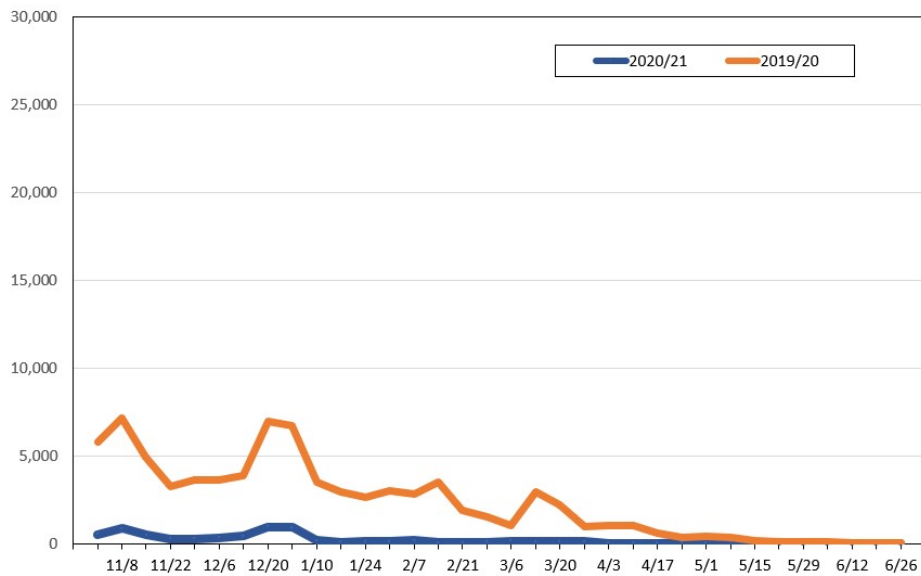
Source: Global Agency Pro, as of October 19, 2020

**Travel Agency Weekly Bookings for Future Travel to Hawai'i as of October 19, 2020**  
Japan



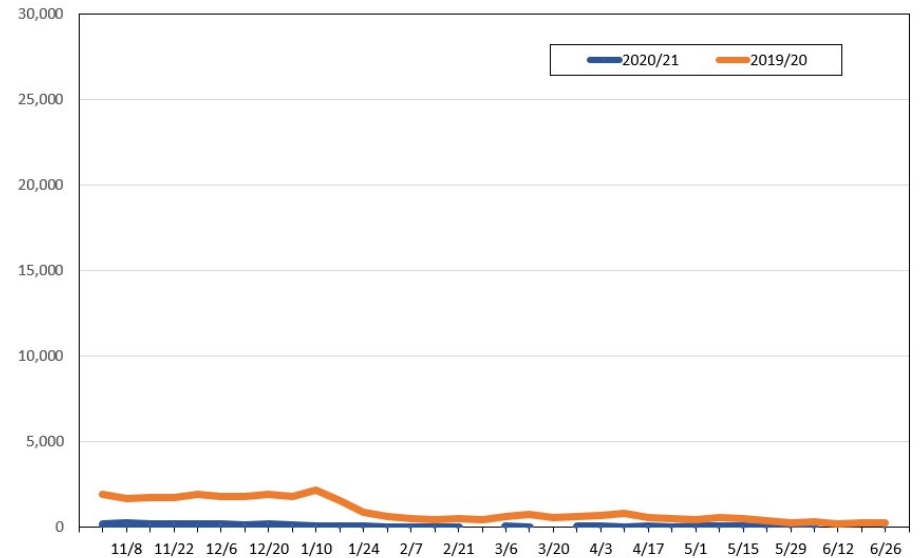
Source: Global Agency Pro, as of October 19, 2020

**Travel Agency Weekly Bookings for Future Travel to Hawai'i as of October 19, 2020**  
Canada



Source: Global Agency Pro, as of October 19, 2020

**Travel Agency Weekly Bookings for Future Travel to Hawai'i as of October 19, 2020**  
Australia



Source: Global Agency Pro, as of October 19, 2020