

HTA COVID-19 UPDATE

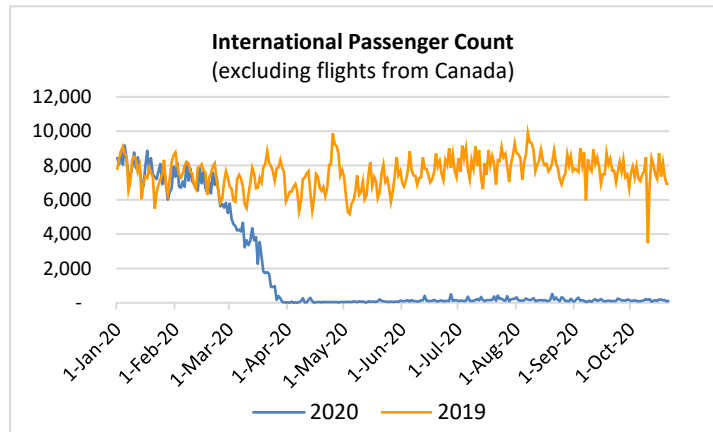
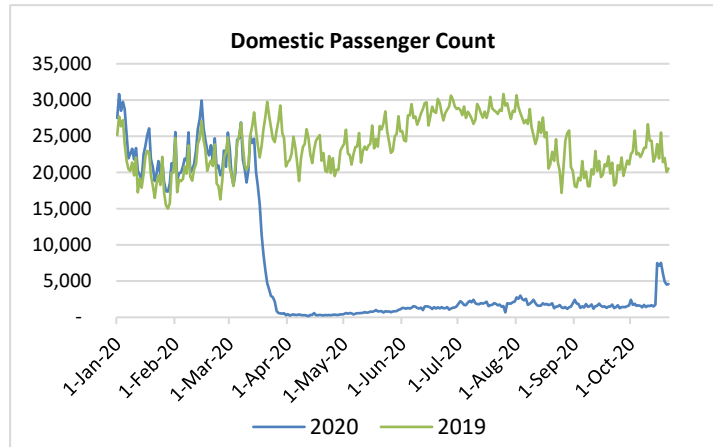
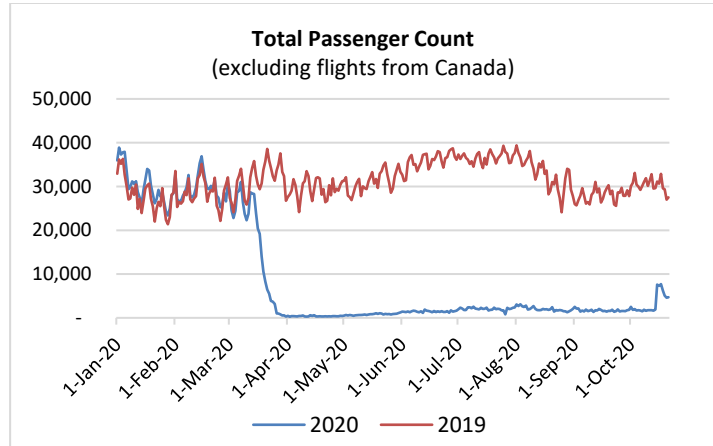
(Issued: 10/22/20 @ 4:00pm)

Reason for Trip by Arrival Airport - Transpacific Screened Passengers as of 10/20/20	Honolulu (HNL)	Kahului (OGG)	Kona (KOA)	Lihue (LIH)	Grand Total
Airline Crew	263	61	51	31	406
Corporate Meeting	6	0	0	0	6
Essential Worker	64	17	8	3	92
Honeymoon	7	6	0	2	15
Incentive Trip	2	1	0	0	3
Intended Resident	114	12	22	16	164
Military or Federal Government	143	2	1	1	147
Other	66	17	10	16	109
Other Business	116	45	34	24	219
Pleasure/Vacation	835	628	217	294	1,974
Returning Resident	569	101	106	41	817
To Attend School	6	1	0	0	7
To Get Married	1	5	0	0	6
Transit	181	6	0	0	187
Visiting Friends or Relatives	722	138	103	59	1,022
Grand Total	3,095	1,040	552	487	5,174

Source: Safe Travels program developed by the State of Hawaii Office of Enterprise Technology Services

Note: The data is preliminary and subject to change

Market Impact Update: <https://www.dropbox.com/10/22/20 HTA COVID19 Update>



Daily Passenger Count Table

10/21/2020	Domestic	International	Total
Oahu	2851	105	2956
Maui	807		807
Island of Hawaii	473		473
Kauai	471		471
State	4602	105	4707

Novel Coronavirus in Hawaii

COVID-19 Positive Cases

Cumulative totals as of 12:00 noon on October 22, 2020

Total Cases	14,335 (102 new)
Required Hospitalization	1,045‡
Death	206
Released from Isolation	11,232§
Hawaii County	1,120
Honolulu County	12,669
Kauai County	60
Maui County	435†
Pending	0
Residents diagnosed outside of Hawaii	51

Footnotes for COVID-19 Cases

*As a result of updated information, one case was recategorized from Honolulu to Hawaii.

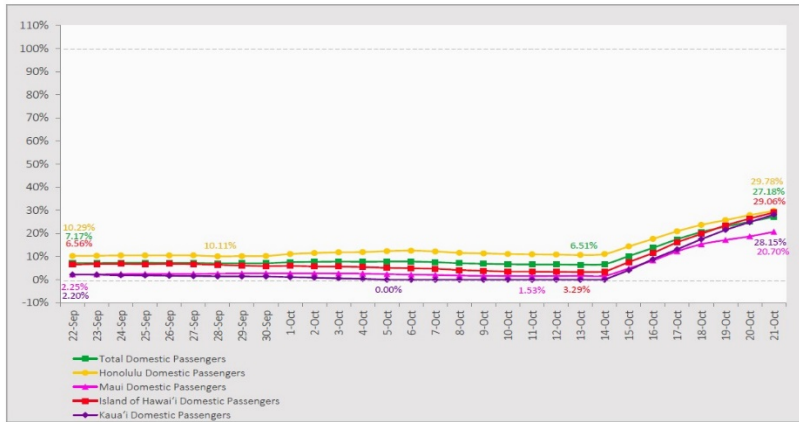
†One case is a Lanai resident whose exposure is on Maui Island and who will be remaining on Maui Island for the interim.

‡Includes Hawaii residents hospitalized out of state.

§Includes cases that meet isolation release criteria (Isolation should be maintained until at least 24 hours after resolution of fever and myalgia without the use of antipyretics OR at least 10 days have passed since symptom onset, whichever is longer). (The cases that have died and one case that has left the jurisdiction have been removed from these counts). Positive cases include confirmed cases, and Hawaii residents and non-residents; data are preliminary and subject to change. Note that CDC provides case counts according to states of residence.

7-Day Domestic by Island Moving Average Daily Passenger Volume

2020 Volume as Percentage of 2019 Volume
Through October 21, 2020



Source: HVCB analysis based on data from DBEDT
Note: Passenger volume figures include both visitors and residents.

Domestic by Island Month-to-Date and Year-to-Date Daily Passenger Volume

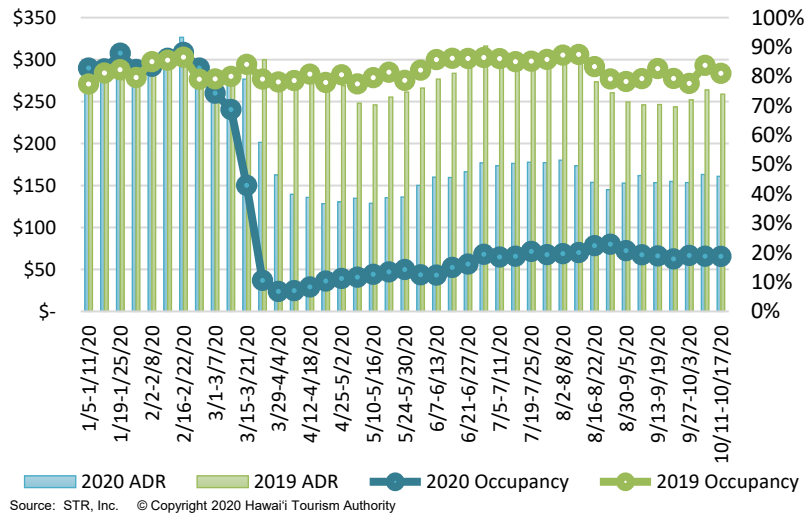
2020 Volume versus 2019 Volume
Through October 21, 2020

	2020	2019	Volume Change	Percent Change
Honolulu	45,796	261,798	-216,002	-82.5%
Maui County	10,070	129,521	-119,452	-92.2%
Island of Hawai'i	5,757	48,847	-43,090	-88.2%
Kaua'i	4,033	44,370	-40,337	-90.9%
Total	65,656	484,536	-418,881	-86.4%

	2020	2019	Volume Change	Percent Change
Honolulu	1,210,074	3,741,048	-2,530,974	-67.7%
Maui County	467,750	1,823,591	-1,355,842	-74.4%
Island of Hawai'i	235,320	801,981	-566,661	-70.7%
Kaua'i	156,097	623,831	-467,734	-75.0%
Total	2,069,240	6,990,451	-4,921,211	-70.4%

Source: HVCB analysis based on data from DBEDT
Note: Passenger volume figures include both visitors and residents. Total includes other international passengers. 2020 includes one additional day due to Leap Year (February 29th, 2020).

State of Hawaii Hotel Performance by Week - 2020 vs 2019

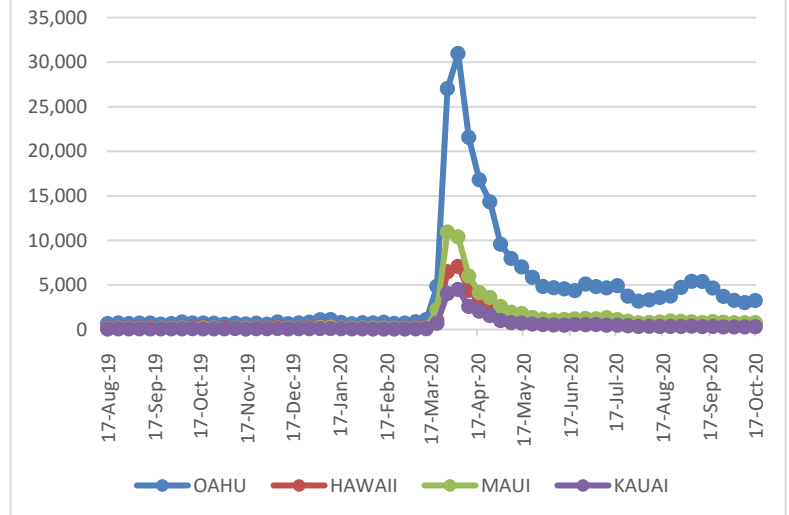


Hawaii Hotel Performance Info:

For the week of October 11 – October 17, 2020

	Occupancy	ADR	RevPAR
State of Hawaii	18.7%	\$ 160.95	\$ 30.09
Oahu	20.0%	\$ 157.00	\$ 31.43
Maui County	14.5%	\$ 188.22	\$ 27.33
Kauai County	17.3%	\$ 162.53	\$ 28.17
Island of Hawaii	22.8%	\$ 138.15	\$ 31.44

2020 Initial Weekly Unemployment Claims by Island



Weekly Unemployment Initial Claims: October 17, 2020

State of Hawaii	5,119
C&C of Oahu	3,247
Hawaii County	705
Maui County	750
Kauai County	295
Agent (filed in Hawaii against another state)	122

News Highlights

October 22, 2020

Honolulu Star Advertiser:

[Hawaii's tourism reopening off to choppy start](#)

Hawaii News Now: [Travelers](#)

[encounter backlog, missing tests in state's arrivals screening portal](#)

Hawaii News Now: [Safeguards in](#)

[place, ensuring Hawaii's restaurant cards can only be used at restaurants](#)

Honolulu Star Advertiser: [Big](#)

[Island reopens to interisland travelers with post-arrival test](#)

KHON2: [Gov. Ige approves order](#)

[advancing Honolulu into Tier Two](#)

KITV4: [Hawaii bar owners file](#)

[lawsuit against Gov. Ige, Mayor Caldwell](#)

Honolulu Civil Beat: [Kauai](#)

[Restaurants Bar 'Unquarantined Travelers' From Dine-In Service](#)

Honolulu Civil Beat: [Protect Our](#)

[Hotel Workers As Hawaii Reopens Tourism](#)

The Maui News: [State lacks](#)

[testing options for Canadians](#)

Big Island Now: [New Video](#)

[Informs Hawaii Visitors Of Kuleana In Time Of Pandemic](#)

Helpful Resources

Department of Health
<https://hawaiiicovid19.com/>

Department of Health

<https://health.hawaii.gov/docd/advisories/novel-coronavirus-2019>

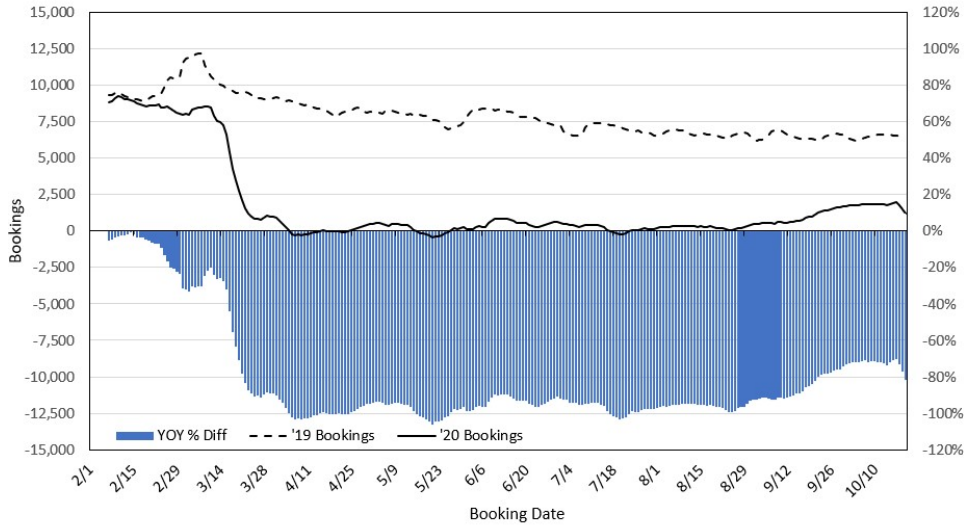
Dept. of Business, Economic Development & Tourism

<https://dbedt.hawaii.gov/economic/covid19/>

Department of Transportation

<https://hidot.hawaii.gov/coronavirus/>

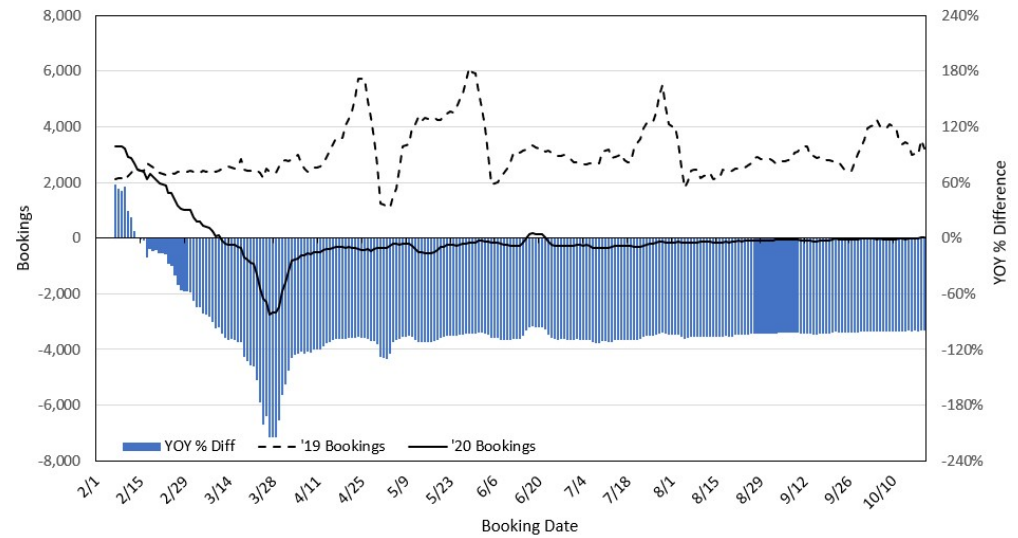
**Travel Agency Bookings to Hawaii for Future Arrivals*
Based on a 7-day Moving Average, 2020 vs 2019
U.S.**



*Future Arrivals refers to all arrivals that are 'future' relative to the referenced booking date.
Source: Global Agency Pro

Update: Oct 20, 2020

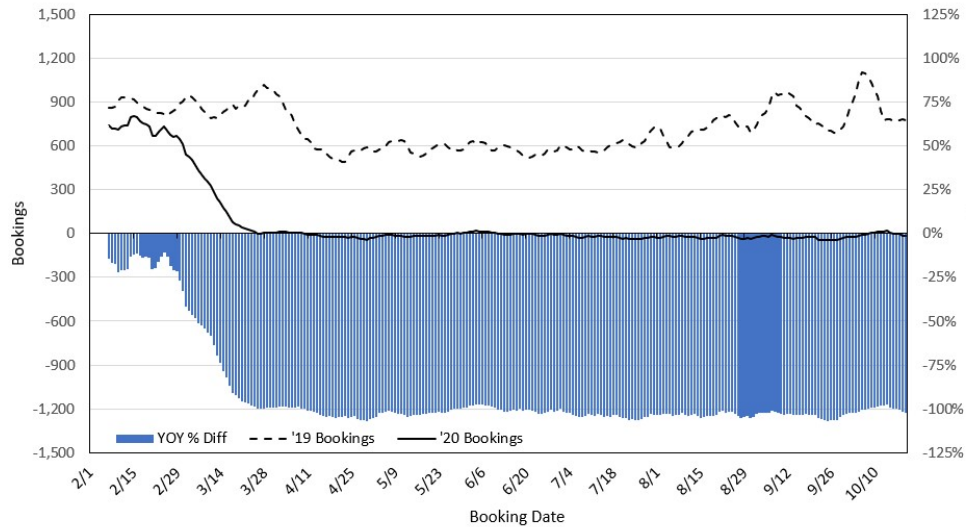
**Travel Agency Bookings to Hawaii for Future Arrivals*
Based on a 7-day Moving Average, 2020 vs 2019
Japan**



*Future Arrivals refers to all arrivals that are 'future' relative to the referenced booking date.
Source: Global Agency Pro

Update: Oct 20, 2020

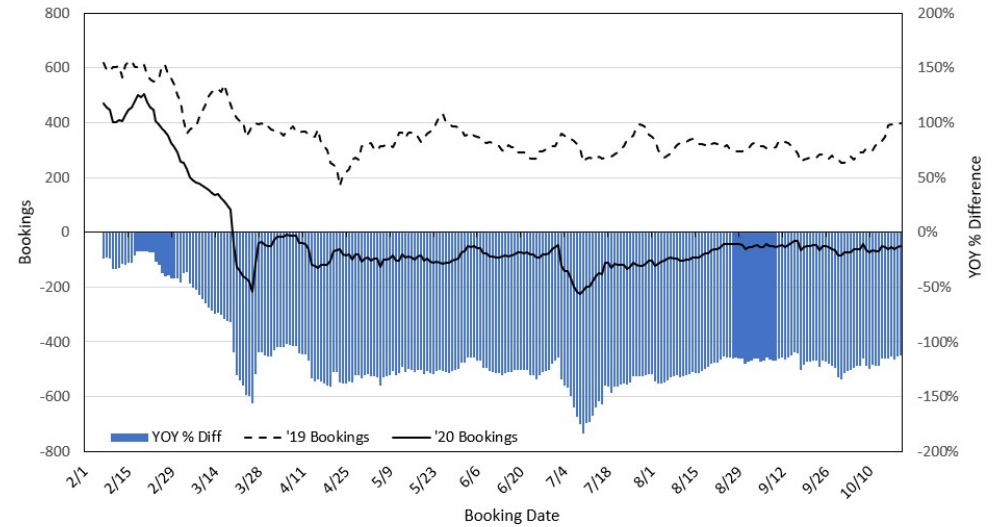
**Travel Agency Bookings to Hawaii for Future Arrivals*
Based on a 7-day Moving Average, 2020 vs 2019
Canada**



*Future Arrivals refers to all arrivals that are 'future' relative to the referenced booking date.
Source: Global Agency Pro

Update: Oct 20, 2020

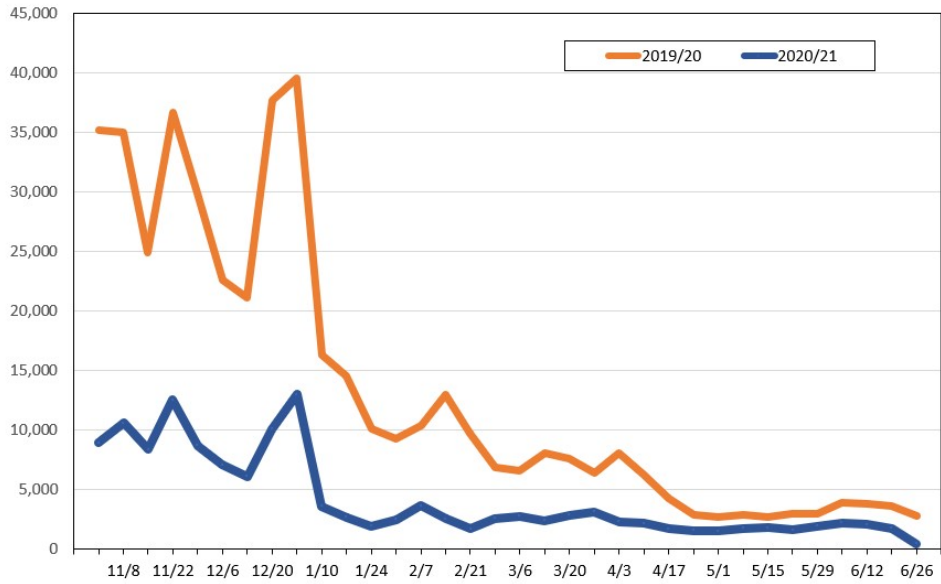
**Travel Agency Bookings to Hawaii for Future Arrivals*
Based on a 7-day Moving Average, 2020 vs 2019
Australia**



*Future Arrivals refers to all arrivals that are 'future' relative to the referenced booking date.
Source: Global Agency Pro

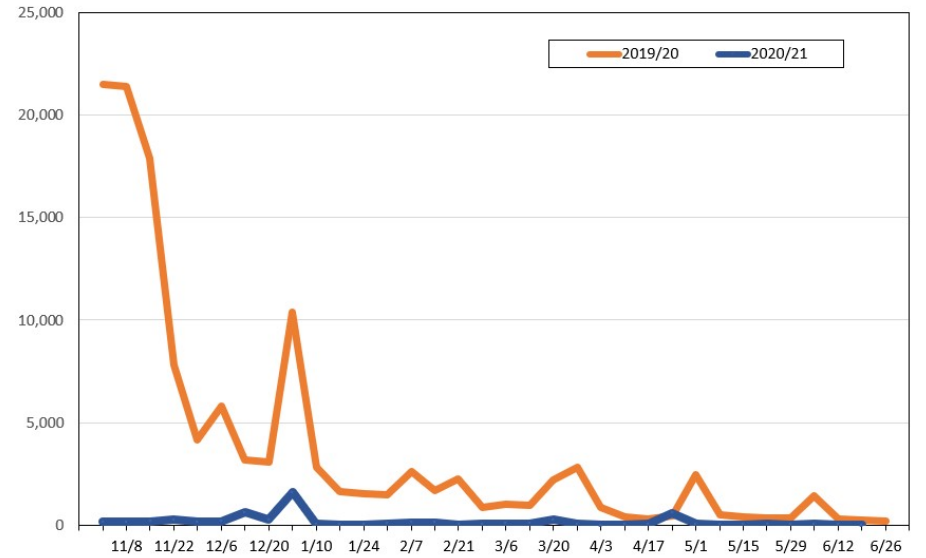
Update: Oct 20, 2020

Travel Agency Weekly Bookings for Future Travel to Hawai'i as of October 20, 2020
U.S.



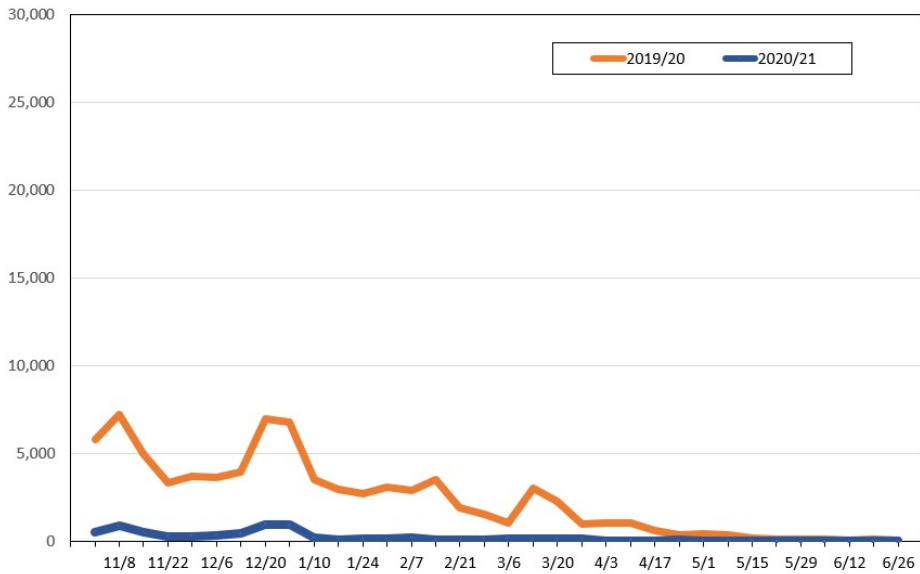
Source: Global Agency Pro, as of October 20, 2020

Travel Agency Weekly Bookings for Future Travel to Hawai'i as of October 20, 2020
Japan



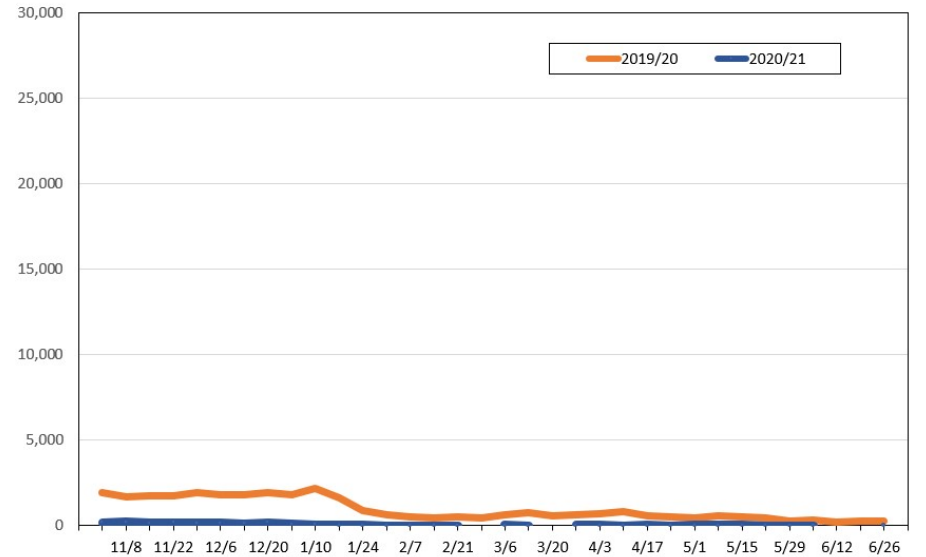
Source: Global Agency Pro, as of October 20, 2020

Travel Agency Weekly Bookings for Future Travel to Hawai'i as of October 20, 2020
Canada



Source: Global Agency Pro, as of October 20, 2020

Travel Agency Weekly Bookings for Future Travel to Hawai'i as of October 20, 2020
Australia



Source: Global Agency Pro, as of October 20, 2020