

HTA COVID-19 UPDATE

(Issued: 11/2/20 @ 4:30pm)

Reason for Trip by Arrival Airport - Transpacific Screened Passengers as of 11/01/20	Honolulu (HNL)	Kahului (OGG)	Kona (KOA)	Lihue (LIH)	Grand Total
Airline Crew	273	84	60	57	474
Corporate Meeting	6	1	0	0	7
Essential Worker	140	34	14	5	193
Honeymoon	11	12	0	1	24
Incentive Trip	1	1	2	1	5
Intended Resident	155	26	26	6	213
Military or Federal Government	212	0	1	3	216
Other	45	14	13	8	80
Other Business	159	58	58	25	300
Pleasure/Vacation	1,283	1,271	487	579	3,620
Returning Resident	762	103	115	50	1,030
Sports Event	9	0	0	0	9
To Attend School	12	0	7	0	19
To Get Married	10	2	0	0	12
Transit	262	3	4	1	270
Visiting Friends or Relatives	544	137	147	67	895
Grand Total	3,884	1,746	934	803	7,367

Source: Safe Travels program developed by the State of Hawaii Office of Enterprise Technology Services

Note: The data is preliminary and subject to change

Market Impact Update: <https://www.dropbox.com/11/02/20 HTA COVID19 Update>

Novel Coronavirus in Hawaii

COVID-19 Positive Cases

Cumulative totals as of 12:00 noon on November 2, 2020

Total Confirmed Cases	15,231* (78 new)
Total COVID-19 Tests	537,421
Current Active Cases	3,144
Total Fatalities	219
City and County of Honolulu	13,250
County of Hawaii	1,304
County of Kauai	66
County of Maui	527†
Pending	0
Currently Hospitalized	58‡
Released from Isolation	11,868§

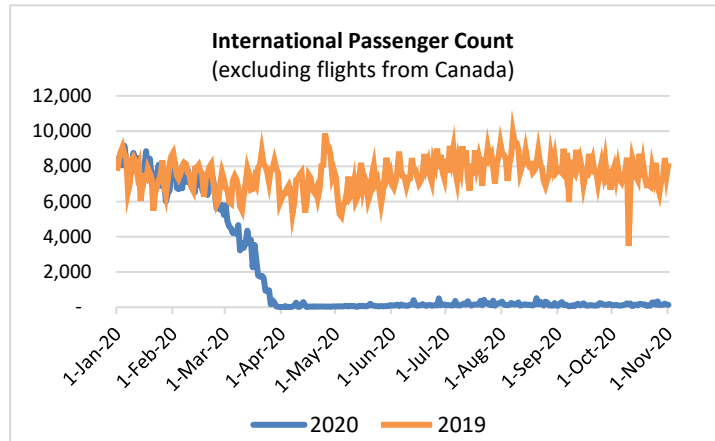
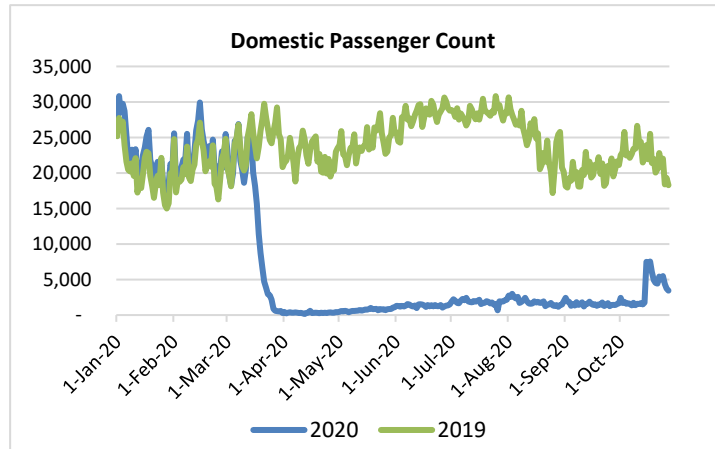
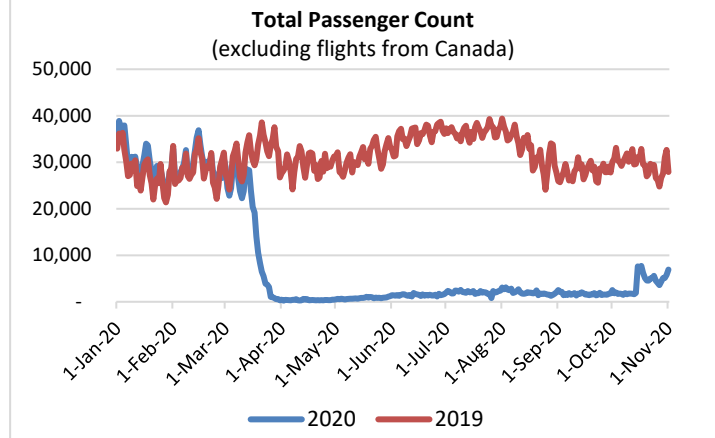
Footnotes for COVID-19 Cases

*As a result of updated information, one case from Hawaii and one case from Kauai were removed from the counts.

†One case is a Lanai resident whose exposure is on Maui Island and who will be remaining on Maui Island for the interim.

‡Includes Hawaii residents hospitalized out of state.

§Includes cases that meet isolation release criteria (Isolation should be maintained until at least 24 hours after resolution of fever and myalgia without the use of antipyretics OR at least 10 days have passed since symptom onset, whichever is longer). (The cases that have died and one case that has left the jurisdiction have been removed from these counts). Positive cases include confirmed cases, and Hawaii residents and non-residents; data are preliminary and subject to change. Note that CDC provides case counts according to states of residence.

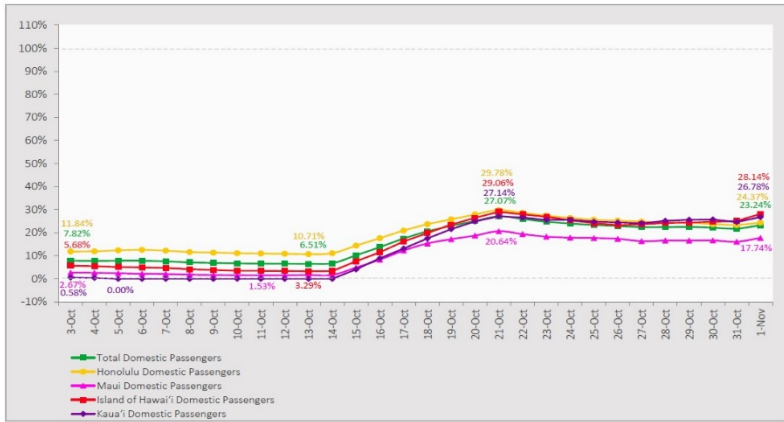


Daily Passenger Count Table

11/01/2020	Domestic	International	Total
Oahu	3690	134	3824
Maui	1562		1562
Island of Hawaii	827		827
Kauai	708		708
State	6787	134	6921

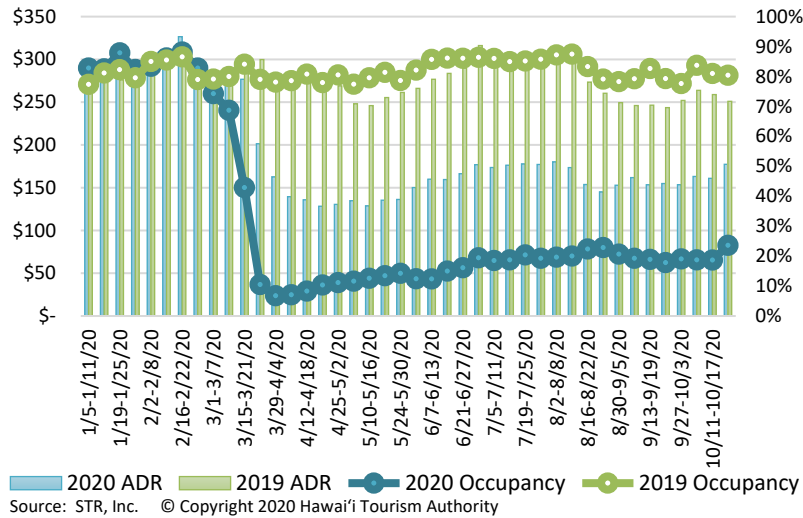
7-Day Domestic by Island Moving Average Daily Passenger Volume

2020 Volume as Percentage of 2019 Volume
Through November 1, 2020



Source: HVCB analysis based on data from DBEDT
Note: Passenger volume figures include both visitors and residents.

State of Hawai'i Hotel Performance by Week - 2020 vs 2019



Hawaii Hotel Performance Info: For the week of October 18 – October 24, 2020

	Occupancy	ADR	RevPAR
State of Hawaii	23.6%	\$ 177.35	\$ 41.85
Oahu	23.4%	\$ 162.41	\$ 37.97
Maui County	17.5%	\$ 241.90	\$ 42.40
Kauai County	28.8%	\$ 179.11	\$ 51.57
Island of Hawaii	35.2%	\$ 145.60	\$ 51.19

Domestic by Island Month-to-Date and Year-to-Date Daily Passenger Volume

2020 Volume versus 2019 Volume
Through November 1, 2020

November 2020 (Month-to-Date through November 1)

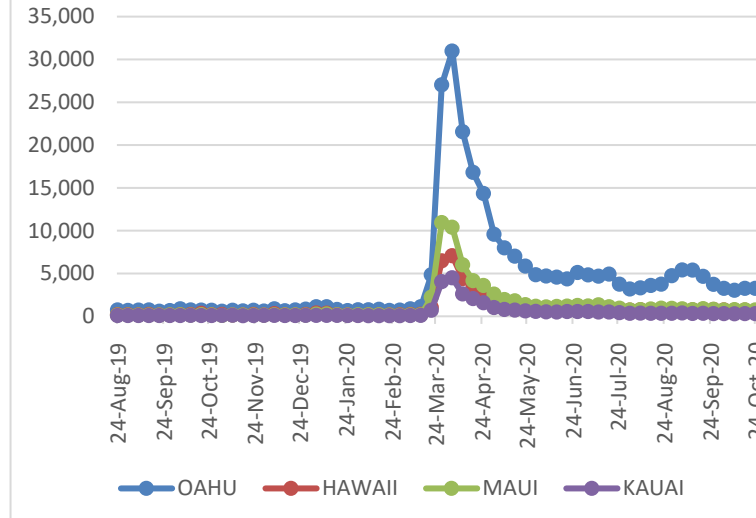
	2020	2019	Volume Change	Percent Change
Honolulu	3,690	12,418	-8,728	-70.3%
Maui County	1,562	6,059	-4,497	-74.2%
Island of Hawai'i	827	1,988	-1,161	-58.4%
Kaua'i	708	2,115	-1,407	-66.5%
Total	6,787	22,580	-15,793	-69.9%

2020 (Year-to-Date through November 1)

	2020	2019	Volume Change	Percent Change
Honolulu	1,238,220	3,854,324	-2,616,104	-67.9%
Maui County	477,069	1,875,718	-1,398,649	-74.6%
Island of Hawai'i	240,365	821,708	-581,343	-70.7%
Kaua'i	160,576	640,622	-480,046	-74.9%
Total	2,116,230	7,192,372	-5,076,143	-70.6%

Source: HVCB analysis based on data from DBEDT
Note: Passenger volume figures include both visitors and residents. Total includes other international passengers. 2020 includes one additional day due to Leap Year (February 29th, 2020).

2020 Initial Weekly Unemployment Claims by Island



Weekly Unemployment Initial Claims: October 24, 2020

State of Hawaii	4,933
C&C of Oahu	3,241
Hawaii County	571
Maui County	730
Kauai County	288
Agent (filed in Hawaii against another state)	103

News Highlights

November 2, 2020

Honolulu Star Advertiser:

[Hawaii's visitor industry slowly reopening](#)

KHON2: [Kauai sees low percentage of mainland visitors participating in post-arrival testing](#)

KITV4: [Hawaii to welcome Japanese visitors with pretravel testing program starting Nov. 6](#)

Honolulu Civil Beat: [Glitches And Problems: My First Adventure With Hawaii's New COVID-19 Travel Program](#)

The Maui News: [Nearly 400 tested for COVID on Lanai](#)

Travel Pulse: [US State Travel Restrictions: Latest COVID-19 Requirements for November](#)

Hawaii Magazine: [5 Socially Distanced Activities to do on your Holiday Visit to Hawaii](#)

SF Gate: ['Aloha also means goodbye': Tensions brew between locals and tourists as Hawaii reopens](#)

Travel + Leisure: [Lanai Locks Down As Hawaii Welcomes Tourists With Negative COVID-19 Tests](#)

Helpful Resources

Department of Health
<https://hawaiiicovid19.com/>

Department of Health

<https://health.hawaii.gov/docd/advisories/novel-coronavirus-2019>

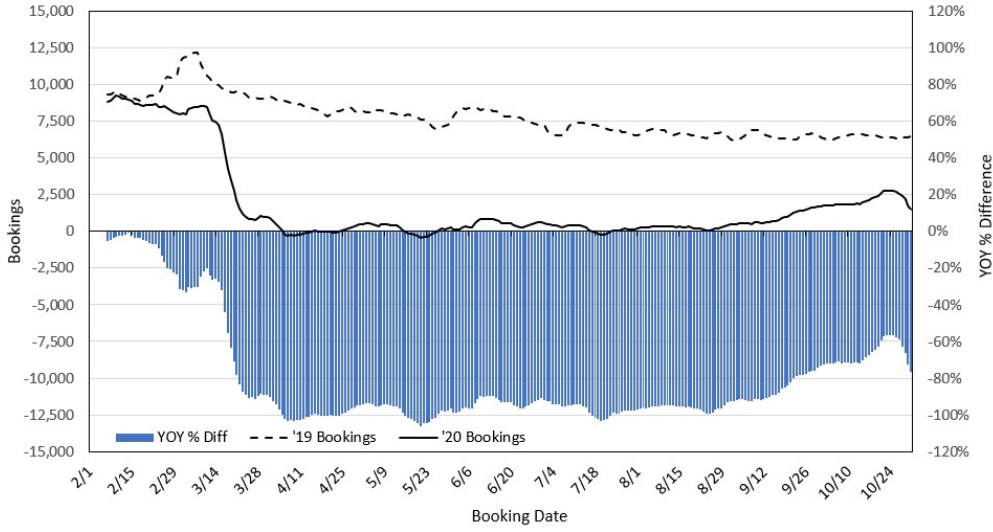
Dept. of Business, Economic Development & Tourism

<https://dbedt.hawaii.gov/economic/covid19/>

Department of Transportation

<https://hidot.hawaii.gov/coronavirus/>

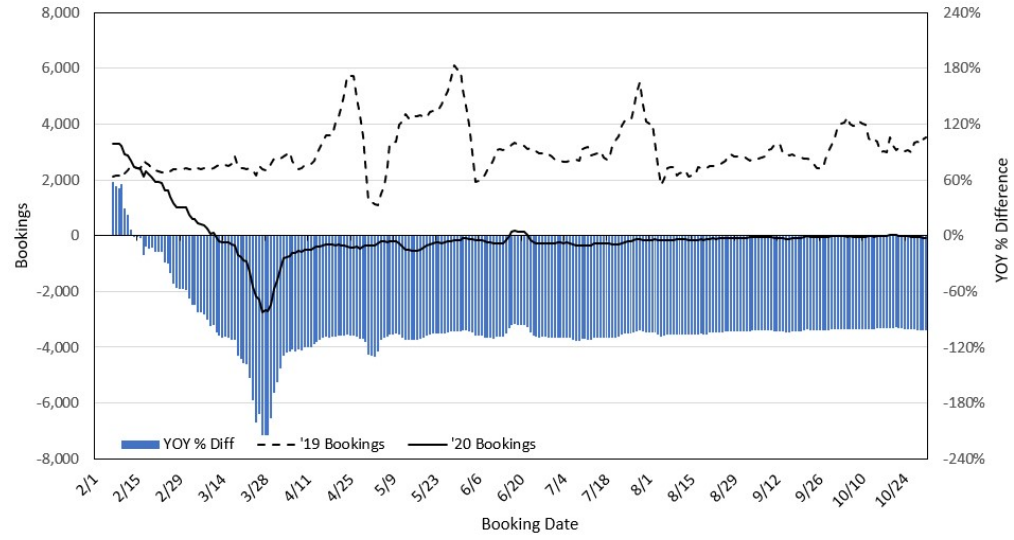
Travel Agency Bookings to Hawaii for Future Arrivals*
Based on a 7-day Moving Average, 2020 vs 2019
U.S.



*Future Arrivals refers to all arrivals that are 'future' relative to the referenced booking date.
 Source: Global Agency Pro

Update: Oct 31, 2020

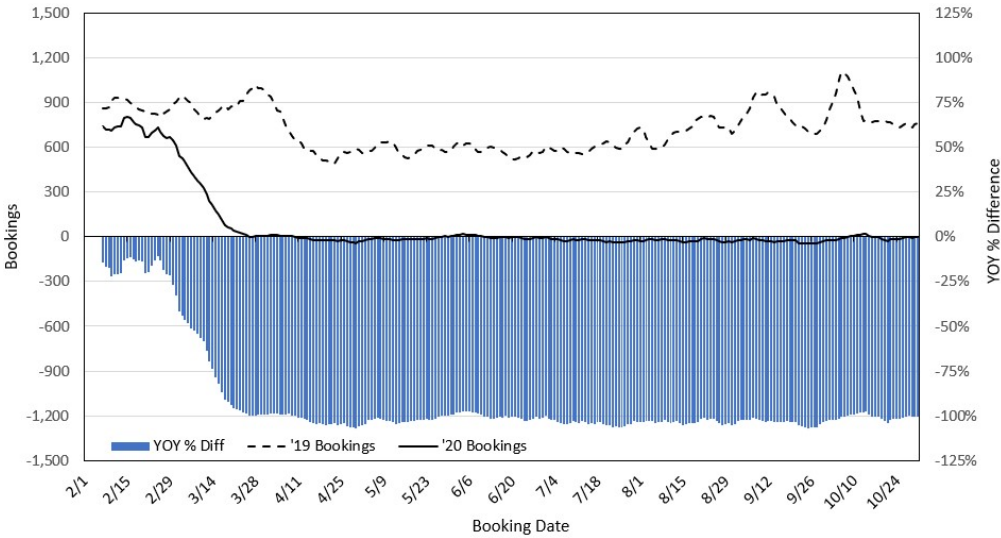
Travel Agency Bookings to Hawaii for Future Arrivals*
Based on a 7-day Moving Average, 2020 vs 2019
Japan



*Future Arrivals refers to all arrivals that are 'future' relative to the referenced booking date.
 Source: Global Agency Pro

Update: Oct 31, 2020

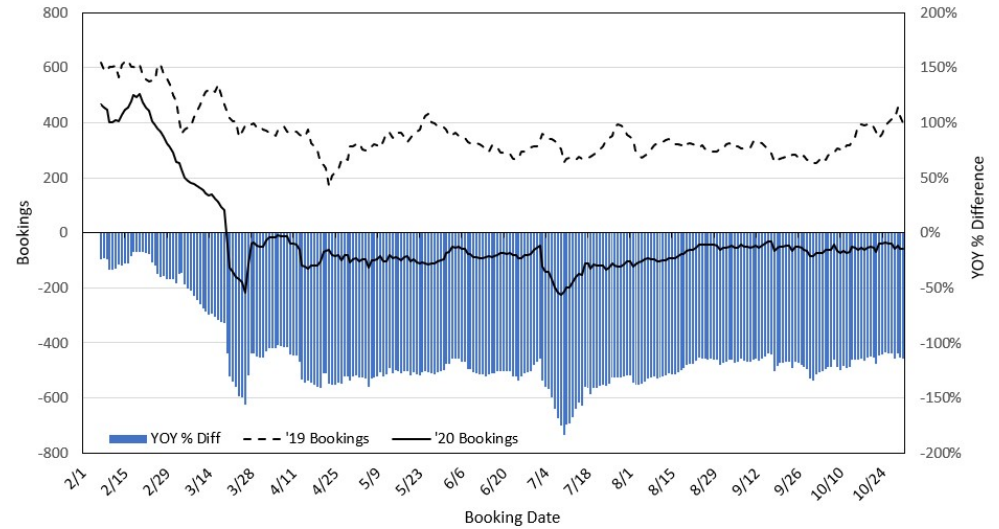
Travel Agency Bookings to Hawaii for Future Arrivals*
Based on a 7-day Moving Average, 2020 vs 2019
Canada



*Future Arrivals refers to all arrivals that are 'future' relative to the referenced booking date.
 Source: Global Agency Pro

Update: Oct 31, 2020

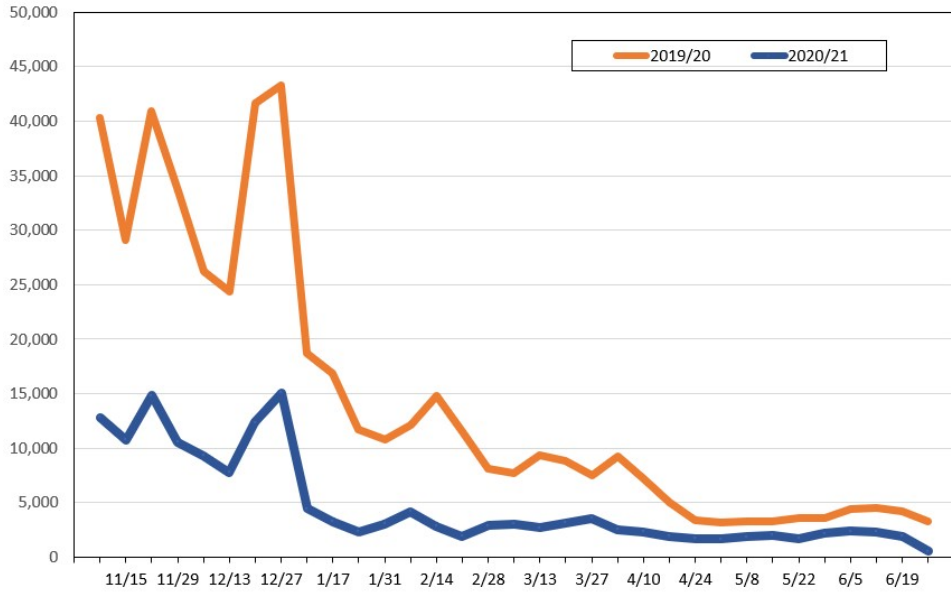
Travel Agency Bookings to Hawaii for Future Arrivals*
Based on a 7-day Moving Average, 2020 vs 2019
Australia



*Future Arrivals refers to all arrivals that are 'future' relative to the referenced booking date.
 Source: Global Agency Pro

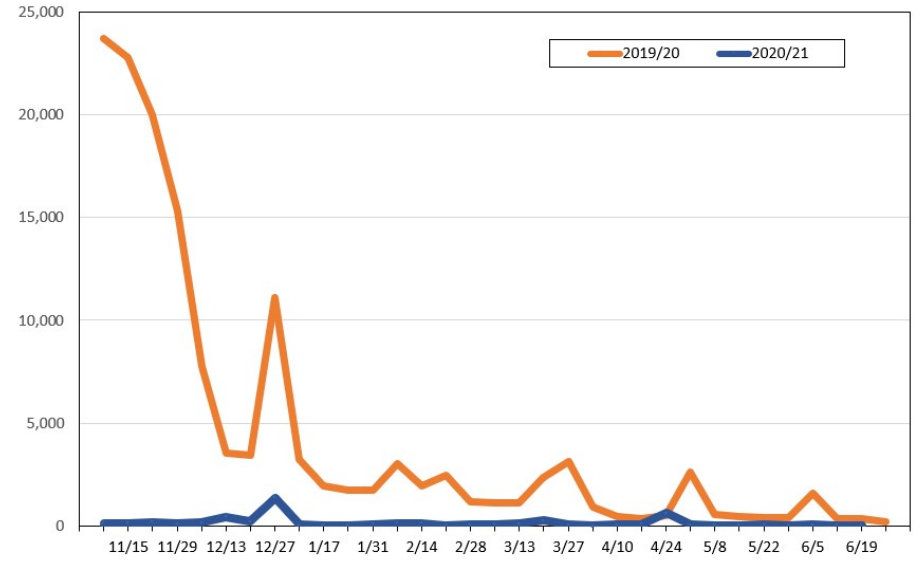
Update: Oct 31, 2020

Travel Agency Weekly Bookings for Future Travel to Hawai'i as of October 31, 2020
U.S.



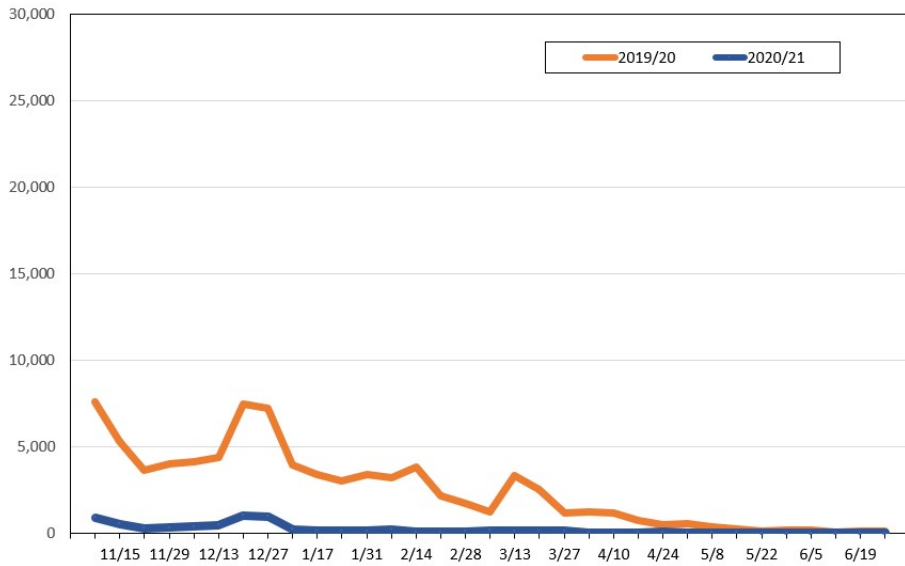
Source: Global Agency Pro, as of October 31, 2020

Travel Agency Weekly Bookings for Future Travel to Hawai'i as of October 31, 2020
Japan



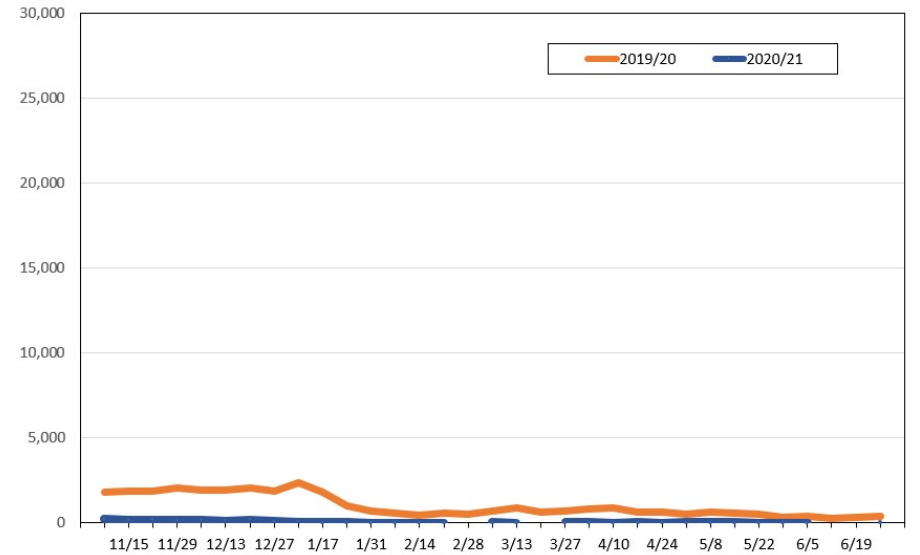
Source: Global Agency Pro, as of October 31, 2020

Travel Agency Weekly Bookings for Future Travel to Hawai'i as of October 31, 2020
Canada



Source: Global Agency Pro, as of October 31, 2020

Travel Agency Weekly Bookings for Future Travel to Hawai'i as of October 31, 2020
Australia



Source: Global Agency Pro, as of October 31, 2020