

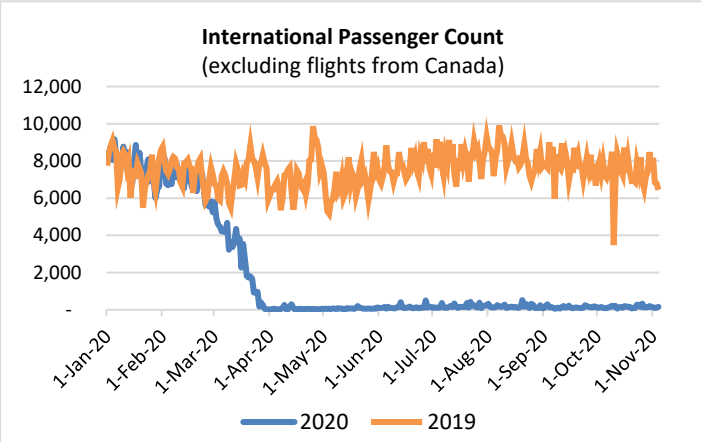
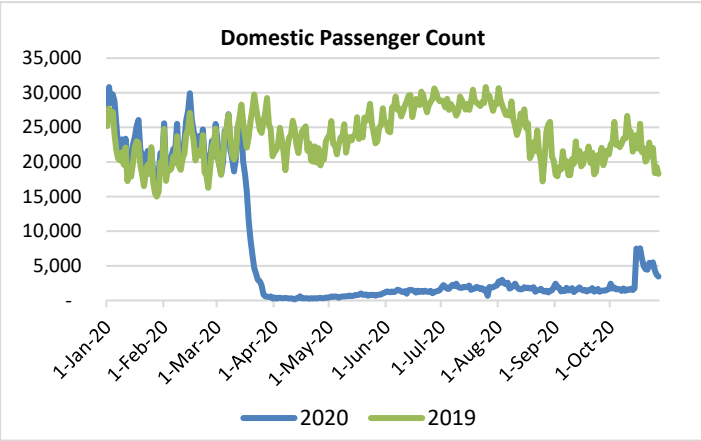
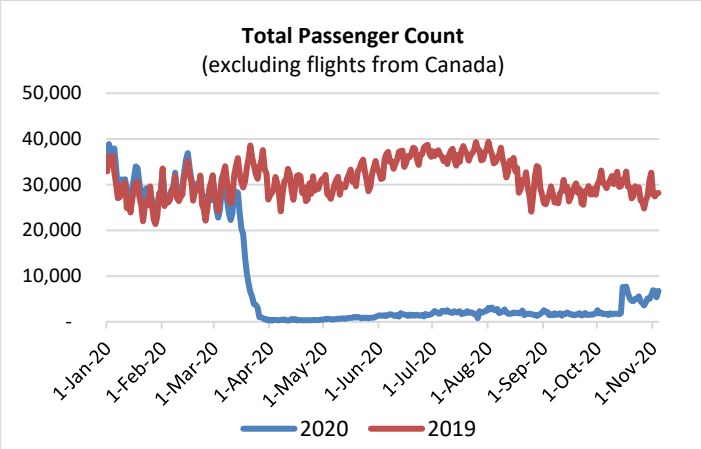
# HTA COVID-19 UPDATE

(Issued: 11/5/20 @ 4:30pm)

Reason for Trip by Arrival Airport - Transpacific Screened Passengers as of 11/04/20	Honolulu (HNL)	Kahului (OGG)	Kona (KOA)	Lihue (LIH)	Grand Total
Airline Crew	356	98	48	47	549
Corporate Meeting	0	2	0	0	2
Essential Worker	94	13	16	0	123
Honeymoon	9	6	1	10	26
Incentive Trip	4	1	6	0	11
Intended Resident	108	33	40	11	192
Military or Federal Government	204	3	0	0	207
Other	77	26	28	21	152
Other Business	152	51	29	26	258
Pleasure/Vacation	1,292	1,248	376	499	3,415
Returning Resident	631	144	124	32	931
To Attend School	4	1	0	0	5
To Get Married	3	2	0	0	5
Transit	228	4	2	0	234
Visiting Friends or Relatives	857	228	151	100	1,336
<b>Grand Total</b>	<b>4,019</b>	<b>1,860</b>	<b>821</b>	<b>746</b>	<b>7,446</b>

**Source:** Safe Travels program developed by the State of Hawaii Office of Enterprise Technology Services  
**Note:** The data is preliminary and subject to change

Market Impact Update: <https://www.dropbox.com/11/05/20 HTA COVID19 Update>



## Novel Coronavirus in Hawaii

### COVID-19 Positive Cases

Cumulative totals as of 3:00pm on November 5, 2020

Total Confirmed Cases	15,572* (100 new)
Hawaii	1,356
Kauai	68
Lanai	105
Maui	415†
Molokai	17
Oahu	13,510
Out of State	101
Pending	0
Required Hospitalization	1138‡
Hawaii Deaths	219
Cases in the past 14 days	1,244**

### Footnotes for COVID-19 Cases

\*As a result of updated information, one case on Oahu was removed from the counts.

\*\*Using cases reported in the past 14 days provides a rough approximation of the number of cases currently meeting criteria for isolation. This proxy number for "active cases" resolves classification issues for cases unable to be reached or who are out of jurisdiction, for whom precise release from isolation date may not be possible to determine. It is also not influenced by lags in data entry.

†One case is a Lanai resident whose exposure is on Maui Island and who will be remaining on Maui Island for the interim.

‡Includes Hawaii residents hospitalized out of state.

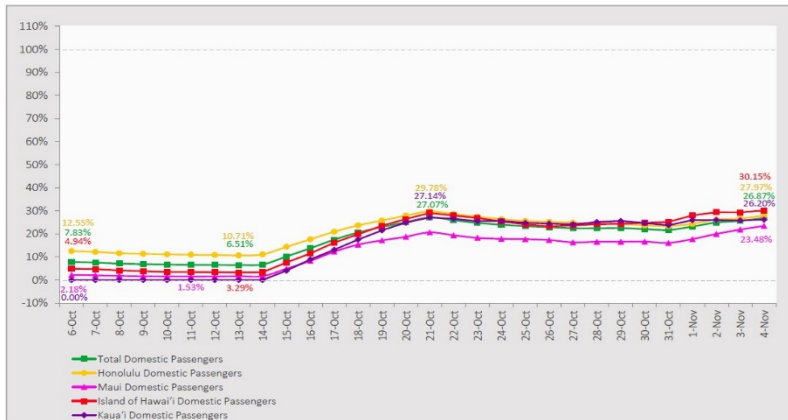
§Includes cases that meet isolation release criteria (Isolation should be maintained until at least 24 hours after resolution of fever and myalgia without the use of antipyretics OR at least 10 days have passed since symptom onset, whichever is longer). (The cases that have died and one case that has left the jurisdiction have been removed from these counts). Positive cases include confirmed cases, and Hawaii residents and non-residents; data are preliminary and subject to change. Note that CDC provides case counts according to states of residence.

### Daily Passenger Count Table

11/04/2020	Domestic	International	Total
Oahu	3689	154	3843
Maui	670		670
Island of Hawaii	672		672
Kauai	578		578
State	5609	154	5763

### 7-Day Domestic by Island Moving Average Daily Passenger Volume

2020 Volume as Percentage of 2019 Volume  
Through November 4, 2020



Source: HVCB analysis based on data from DBEDT  
Note: Passenger volume figures include both visitors and residents.

### Domestic by Island Month-to-Date and Year-to-Date Daily Passenger Volume

2020 Volume versus 2019 Volume  
Through November 4, 2020

	2020	2019	Volume Change	Percent Change
Honolulu	14,711	48,999	-34,288	-70.0%
Maui County	5,767	22,017	-16,250	-73.8%
Island of Hawai'i	2,588	8,155	-5,567	-68.3%
Kaua'i	2,157	8,864	-6,707	-75.7%
<b>Total</b>	<b>25,223</b>	<b>88,035</b>	<b>-62,812</b>	<b>-71.3%</b>

	2020	2019	Volume Change	Percent Change
Honolulu	1,238,220	3,854,324	-2,616,104	-67.9%
Maui County	477,069	1,875,718	-1,398,649	-74.6%
Island of Hawai'i	240,390	821,708	-581,318	-70.7%
Kaua'i	160,465	640,622	-480,157	-75.0%
<b>Total</b>	<b>2,116,144</b>	<b>7,192,372</b>	<b>-5,076,229</b>	<b>-70.6%</b>

Source: HVCB analysis based on data from DBEDT  
Note: Passenger volume figures include both visitors and residents. Total includes other international passengers. 2020 includes one additional day due to Leap Year (February 29th, 2020).

## News Highlights

November 5, 2020

Honolulu Star Advertiser:

[Honolulu Police Department to deploy COVID-19 quarantine response teams on Oahu](#)

Honolulu Star Advertiser: [Pali Lookout reopens to trickle of visitors](#)

KITV4: [2021 Sony Open to be held without spectators](#)

Hawaii News Now: [State reports 156 new COVID-19 cases after triple-digit jump in infections on Oahu](#)

West Hawaii Today: [Hawaii Island accounts for more than one-fifth of state's new cases](#)

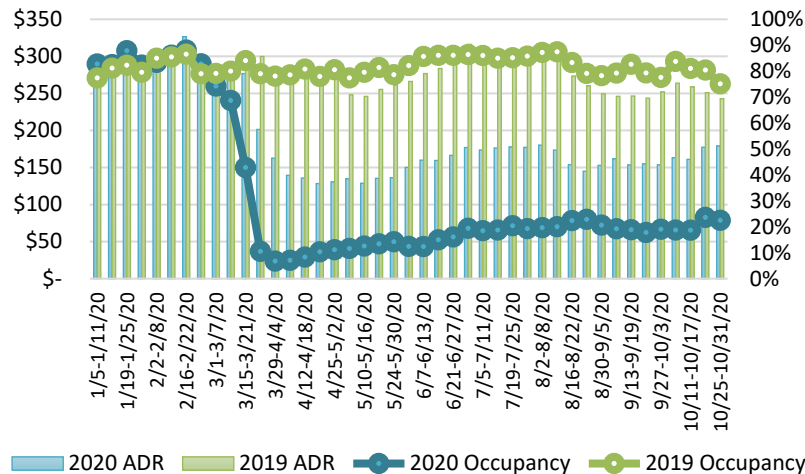
Travel Pulse: [Top Precautions Travelers Take While Flying During COVID-19](#)

NBC San Diego: [San Diego to Honolulu: Southwest Airlines Launches Nonstop Flight From SD Airport](#)

Travel + Leisure: [Airports That Offer COVID-19 Testing On-site for Travelers](#)

U.S. News: [Hawaii Governor Says New Law Needed to Enforce Mask Mandates](#)

### State of Hawai'i Hotel Performance by Week - 2020 vs 2019



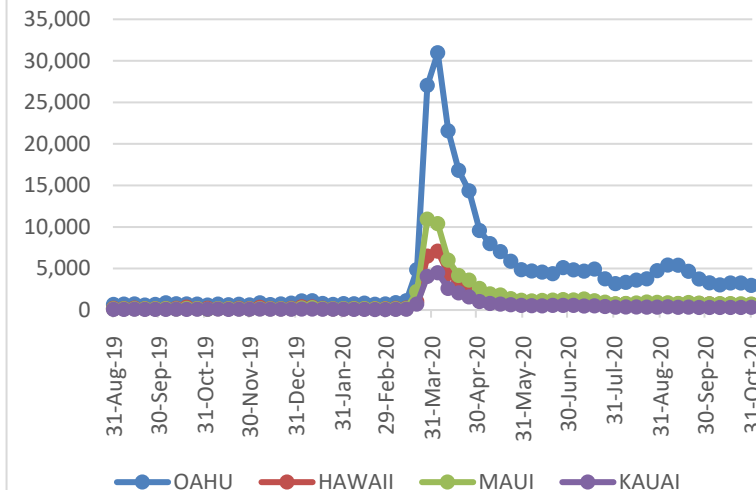
Source: STR, Inc. © Copyright 2020 Hawai'i Tourism Authority

### Hawaii Hotel Performance Info:

For the week of October 25 – October 31, 2020

	Occupancy	ADR	RevPAR
<b>State of Hawaii</b>	22.5%	\$ 179.09	\$ 40.32
<b>Oahu</b>	23.8%	\$ 162.16	\$ 38.64
<b>Maui County</b>	18.5%	\$ 237.87	\$ 44.07
<b>Kauai County</b>	23.6%	\$ 197.86	\$ 46.66
<b>Island of Hawaii</b>	24.2%	\$ 142.75	\$ 34.49

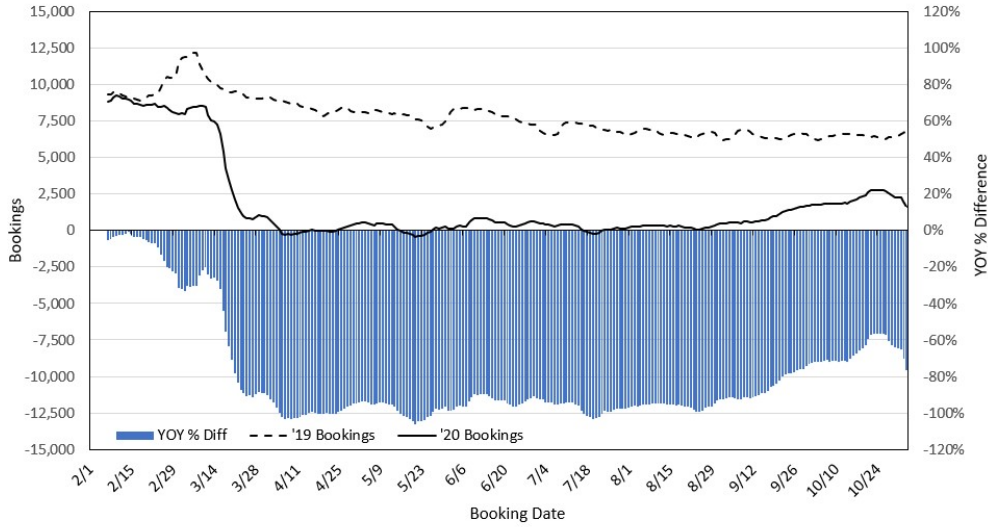
### 2020 Initial Weekly Unemployment Claims by Island



### Weekly Unemployment Initial Claims: October 31, 2020

<b>State of Hawaii</b>	4,700
<b>C&amp;C of Oahu</b>	2,947
<b>Hawaii County</b>	660
<b>Maui County</b>	695
<b>Kauai County</b>	304
<b>Agent</b> (filed in Hawaii against another state)	94

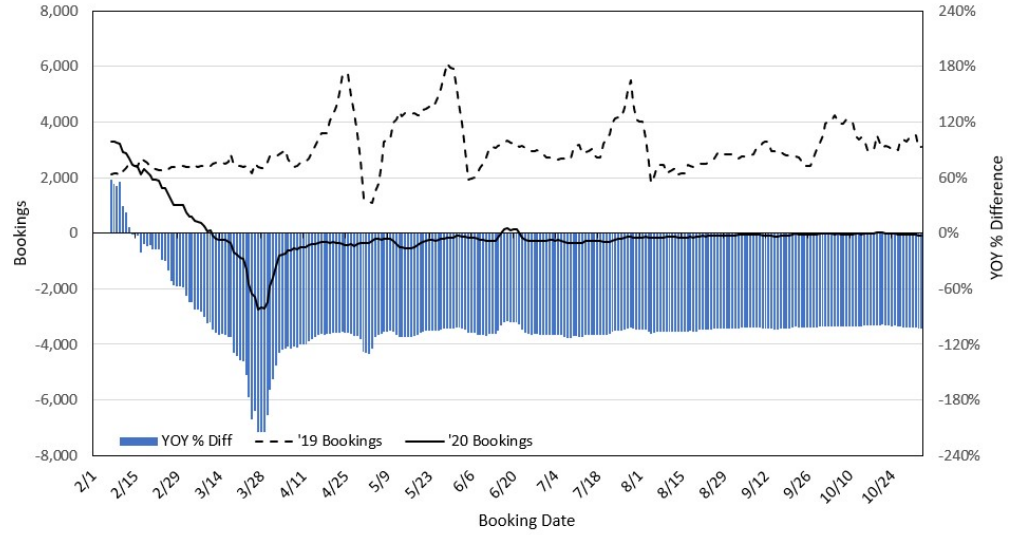
**Travel Agency Bookings to Hawaii for Future Arrivals\*  
Based on a 7-day Moving Average, 2020 vs 2019  
U.S.**



\*Future Arrivals refers to all arrivals that are 'future' relative to the referenced booking date.  
Source: Global Agency Pro

Update: Nov 3, 2020

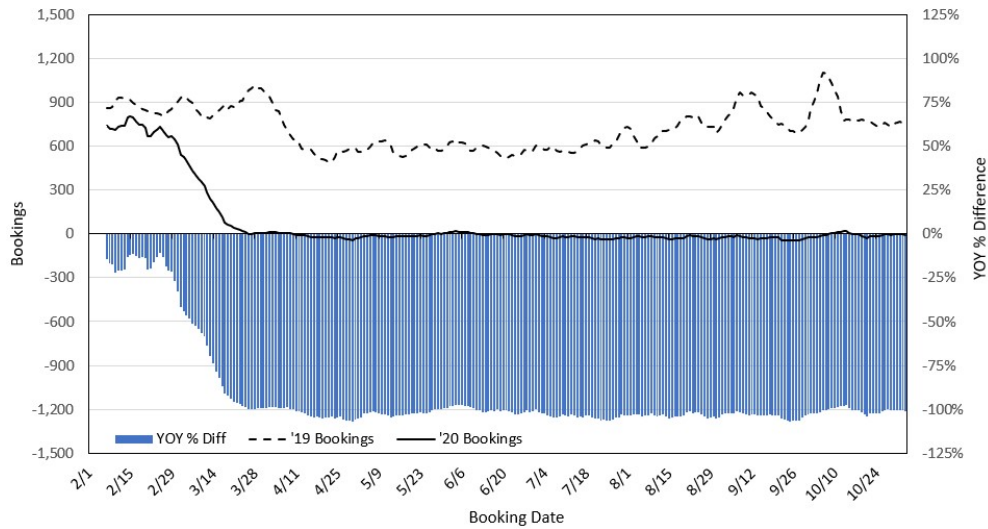
**Travel Agency Bookings to Hawaii for Future Arrivals\*  
Based on a 7-day Moving Average, 2020 vs 2019  
Japan**



\*Future Arrivals refers to all arrivals that are 'future' relative to the referenced booking date.  
Source: Global Agency Pro

Update: Nov 3, 2020

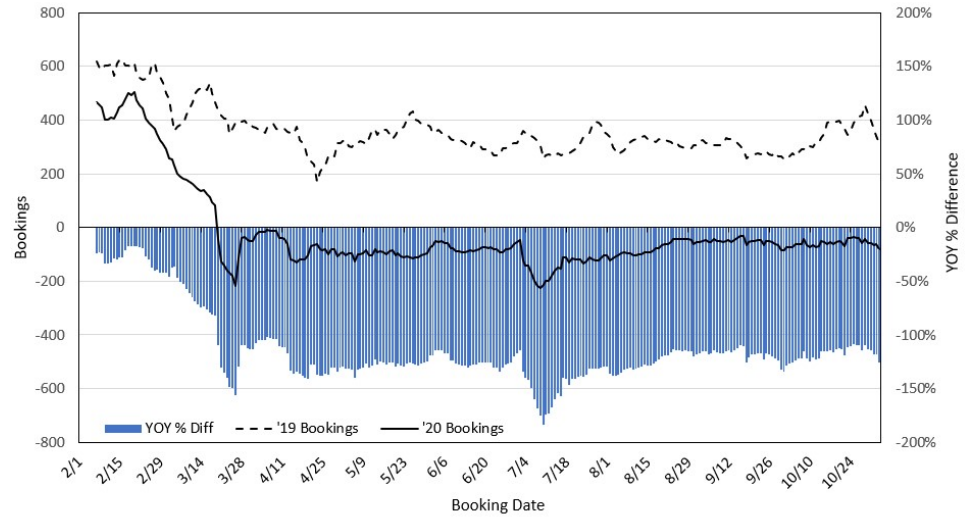
**Travel Agency Bookings to Hawaii for Future Arrivals\*  
Based on a 7-day Moving Average, 2020 vs 2019  
Canada**



\*Future Arrivals refers to all arrivals that are 'future' relative to the referenced booking date.  
Source: Global Agency Pro

Update: Nov 3, 2020

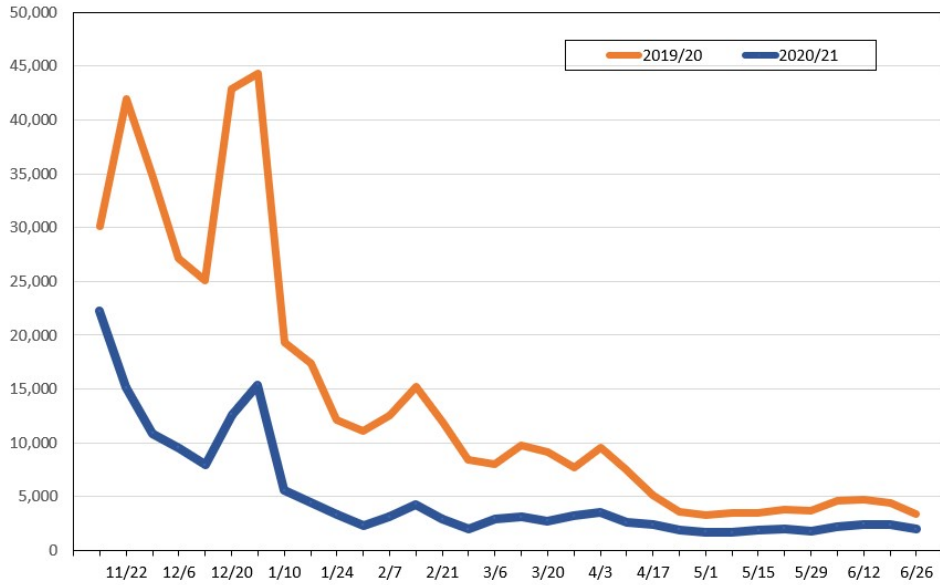
**Travel Agency Bookings to Hawaii for Future Arrivals\*  
Based on a 7-day Moving Average, 2020 vs 2019  
Australia**



\*Future Arrivals refers to all arrivals that are 'future' relative to the referenced booking date.  
Source: Global Agency Pro

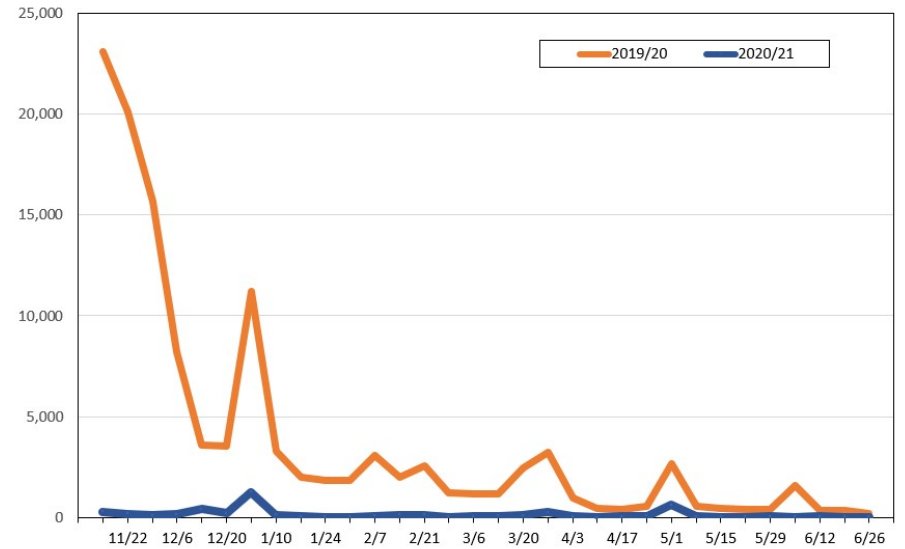
Update: Nov 3, 2020

**Travel Agency Weekly Bookings for Future Travel to Hawai'i as of November 3, 2020**  
U.S.



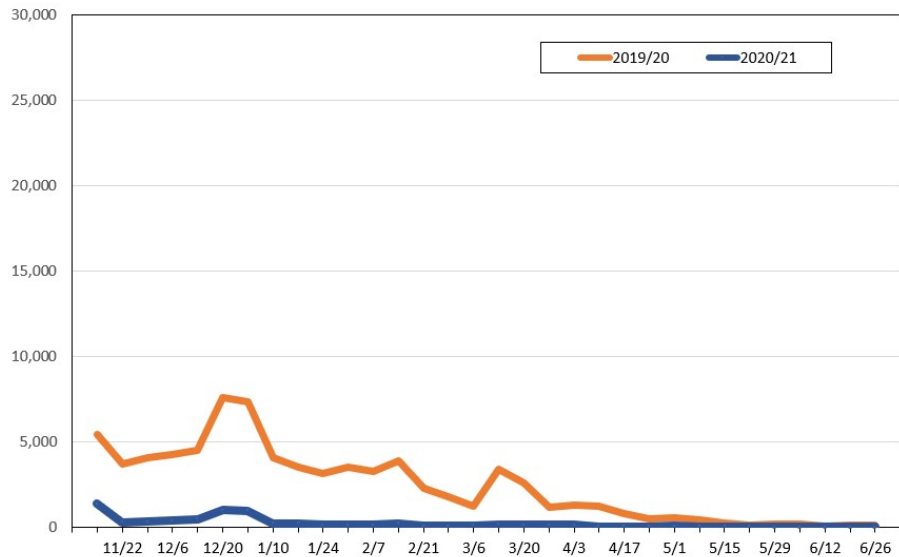
Source: Global Agency Pro, as of November 3, 2020

**Travel Agency Weekly Bookings for Future Travel to Hawai'i as of November 3, 2020**  
Japan



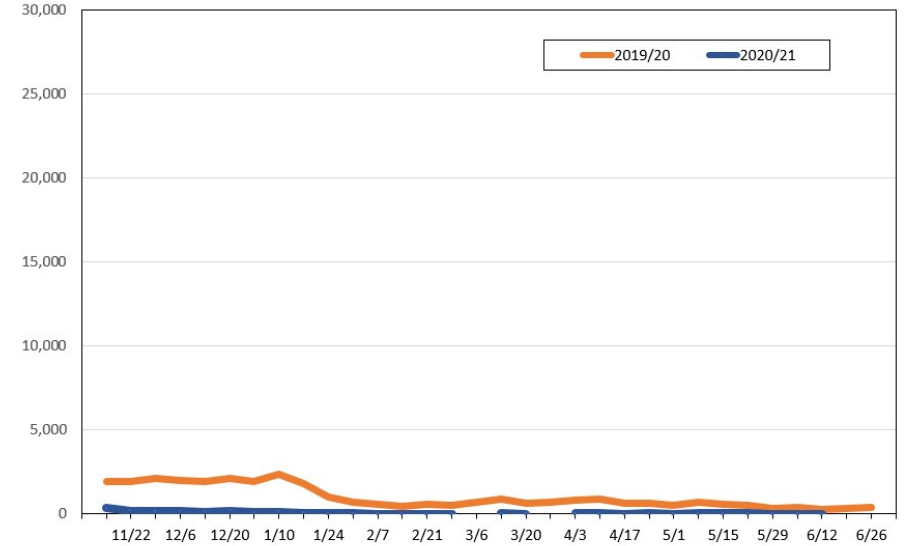
Source: Global Agency Pro, as of November 3, 2020

**Travel Agency Weekly Bookings for Future Travel to Hawai'i as of November 3, 2020**  
Canada



Source: Global Agency Pro, as of November 3, 2020

**Travel Agency Weekly Bookings for Future Travel to Hawai'i as of November 3, 2020**  
Australia



Source: Global Agency Pro, as of November 3, 2020