

# HTA COVID-19 UPDATE

(Issued: 11/6/20 @ 4:00pm)

Reason for Trip by Arrival Airport - Transpacific Screened Passengers as of 11/05/20	Honolulu (HNL)	Kahului (OGG)	Kona (KOA)	Lihue (LIH)	Grand Total
Airline Crew	352	94	53	57	556
Corporate Meeting	1	3	0	0	4
Essential Worker	73	15	11	3	102
Honeymoon	14	8	1	5	28
Incentive Trip	11	1	6	1	19
Intended Resident	77	22	28	7	134
Military or Federal Government	131	1	4	1	137
Other	60	24	19	5	108
Other Business	115	44	39	21	219
Pleasure/Vacation	1,585	1,308	476	619	3,988
Returning Resident	499	129	121	48	797
Sports Event	5	0	0	0	5
To Attend School	4	1	3	0	8
To Get Married	0	2	8	2	12
Transit	259	5	0	0	264
Visiting Friends or Relatives	910	232	163	101	1,406
<b>Grand Total</b>	<b>4,096</b>	<b>1,889</b>	<b>932</b>	<b>870</b>	<b>7,787</b>

Source: Safe Travels program developed by the State of Hawaii Office of Enterprise Technology Services

Note: The data is preliminary and subject to change

Market Impact Update: <https://www.dropbox.com/11/06/20 HTA COVID19 Update>

## Novel Coronavirus in Hawaii

### COVID-19 Positive Cases

Cumulative totals as of 3:00pm on November 6, 2020

Total Confirmed Cases	15,691* (122 new)
Hawaii	1,375
Kauai	69
Lanai	106
Maui	421†
Molokai	17
Oahu	13,596
Out of State	107
Pending	0
Required Hospitalization	1147‡
Hawaii Deaths	219
Cases in the past 14 days	1,234**

### Footnotes for COVID-19 Cases

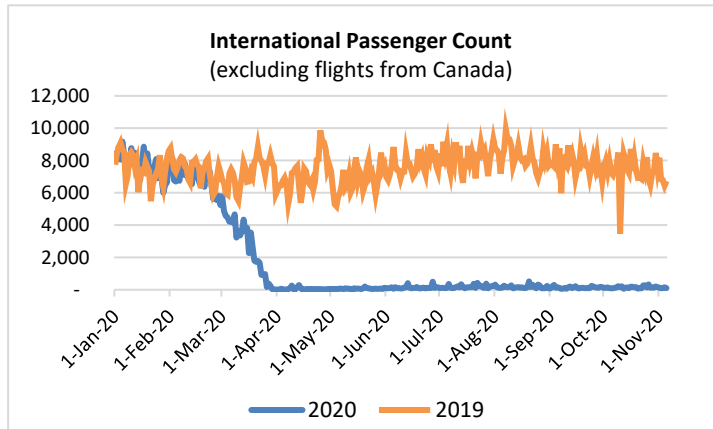
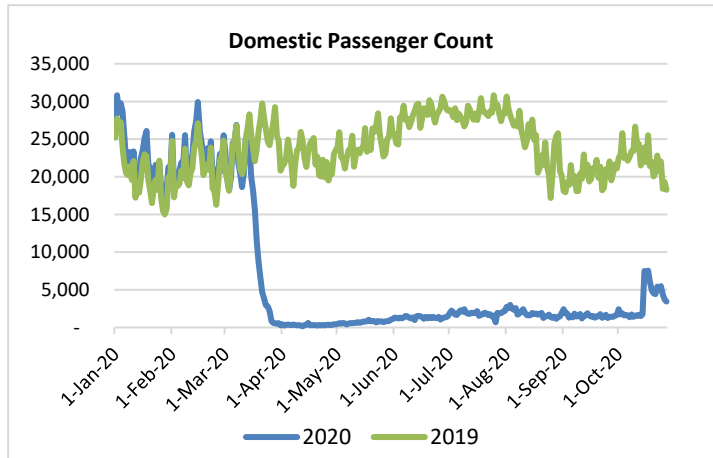
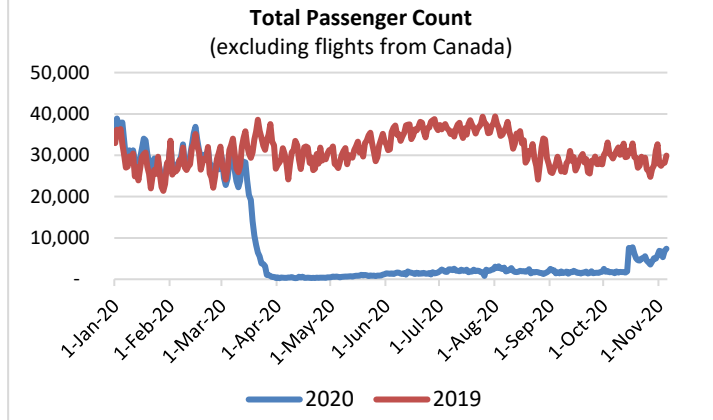
\*As a result of updated information, one case on Oahu and two cases on Hawaii were removed from the counts.

\*\*Using cases reported in the past 14 days provides a rough approximation of the number of cases currently meeting criteria for isolation. This proxy number for "active cases" resolves classification issues for cases unable to be reached or who are out of jurisdiction, for whom precise release from isolation date may not be possible to determine. It is also not influenced by lags in data entry.

†One case is a Lanai resident whose exposure is on Maui Island and who will be remaining on Maui Island for the interim.

‡Includes Hawaii residents hospitalized out of state.

§Includes cases that meet isolation release criteria (Isolation should be maintained until at least 24 hours after resolution of fever and myalgia without the use of antipyretics OR at least 10 days have passed since symptom onset, whichever is longer). (The cases that have died and one case that has left the jurisdiction have been removed from these counts). Positive cases include confirmed cases, and Hawaii residents and non-residents; data are preliminary and subject to change. Note that CDC provides case counts according to states of residence.

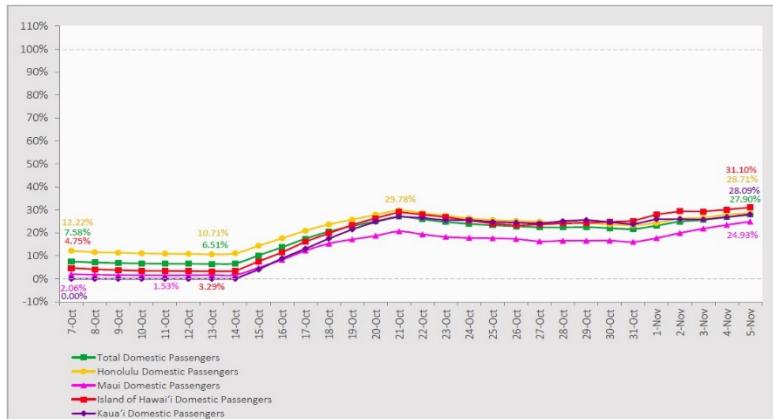


### Daily Passenger Count Table

11/05/2020	Domestic	International	Total
Oahu	3995	102	4097
Maui	1701		1701
Island of Hawaii	835		835
Kauai	745		745
State	7276	102	7378

### 7-Day Domestic by Island Moving Average Daily Passenger Volume

2020 Volume as Percentage of 2019 Volume  
Through November 5, 2020



Source: HVCB analysis based on data from DBEDT  
Note: Passenger volume figures include both visitors and residents.

### Domestic by Island Month-to-Date and Year-to-Date Daily Passenger Volume

2020 Volume versus 2019 Volume  
Through November 5, 2020

November 2020 (Month-to-Date through November 5)

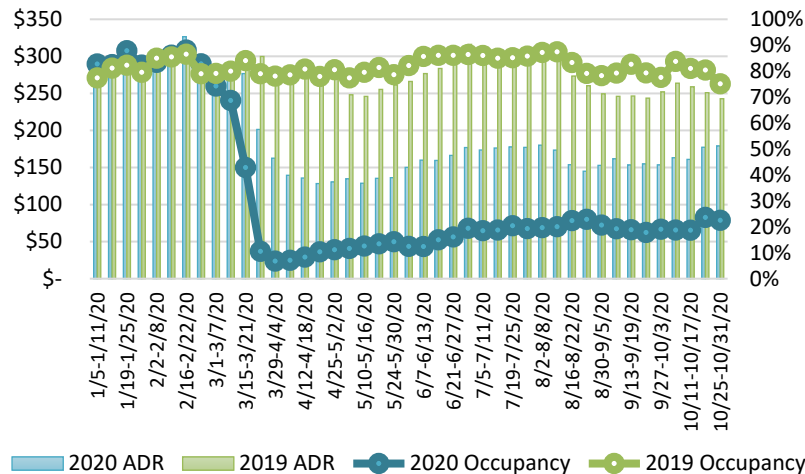
	2020	2019	Volume Change	Percent Change
Honolulu	18,706	60,859	-42,153	-69.3%
Maui County	7,468	27,583	-20,115	-72.9%
Island of Hawai'i	3,423	10,480	-7,057	-67.3%
Kauai	2,997	10,423	-7,426	-71.2%
<b>Total</b>	<b>32,594</b>	<b>109,345</b>	<b>-76,751</b>	<b>-70.2%</b>

2020 (Year-to-Date through November 5)

	2020	2019	Volume Change	Percent Change
Honolulu	1,238,220	3,854,324	-2,616,104	-67.9%
Maui County	477,069	1,875,718	-1,398,649	-74.6%
Island of Hawai'i	240,390	821,708	-581,318	-70.7%
Kauai	160,465	640,622	-480,157	-75.0%
<b>Total</b>	<b>2,116,144</b>	<b>7,192,372</b>	<b>-5,076,229</b>	<b>-70.6%</b>

Source: HVCB analysis based on data from DBEDT  
Note: Passenger volume figures include both visitors and residents. Total includes other international passengers. 2020 includes one additional day due to Leap Year (February 29th, 2020).

### State of Hawai'i Hotel Performance by Week - 2020 vs 2019



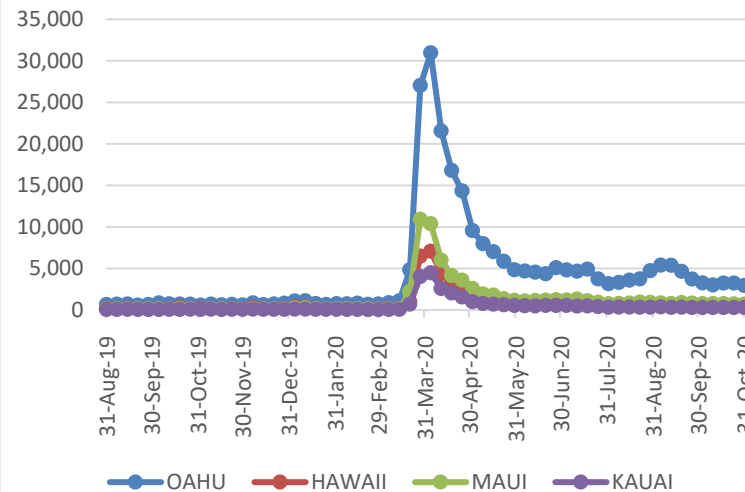
Source: STR, Inc. © Copyright 2020 Hawai'i Tourism Authority

### Hawaii Hotel Performance Info:

For the week of October 25 – October 31, 2020

	Occupancy	ADR	RevPAR
<b>State of Hawaii</b>	22.5%	\$ 179.09	\$ 40.32
<b>Oahu</b>	23.8%	\$ 162.16	\$ 38.64
<b>Maui County</b>	18.5%	\$ 237.87	\$ 44.07
<b>Kauai County</b>	23.6%	\$ 197.86	\$ 46.66
<b>Island of Hawaii</b>	24.2%	\$ 142.75	\$ 34.49

### 2020 Initial Weekly Unemployment Claims by Island



### Weekly Unemployment Initial Claims: October 31, 2020

<b>State of Hawaii</b>	4,700
<b>C&amp;C of Oahu</b>	2,947
<b>Hawaii County</b>	660
<b>Maui County</b>	695
<b>Kauai County</b>	304
<b>Agent</b> (filed in Hawaii against another state)	94

## News Highlights

November 6, 2020

**Honolulu Star Advertiser:** [Andreaa Grigore: The advocate for legal vacation rentals helps businesses weather COVID-19 and other challenges](#)

**KHON2:** [Kauai Department of Health reports 2 new COVID cases on Nov. 5](#)

**KHON2:** [Statewide mask mandate could mean immediate fines for violators](#)

**Maui Now:** [61 Mask Citations Issued Over Five Days on Maui, Enforcement Continues Through Nov. 15](#)

**The Garden Island:** [Free surge testing through end of year starting Sunday](#)

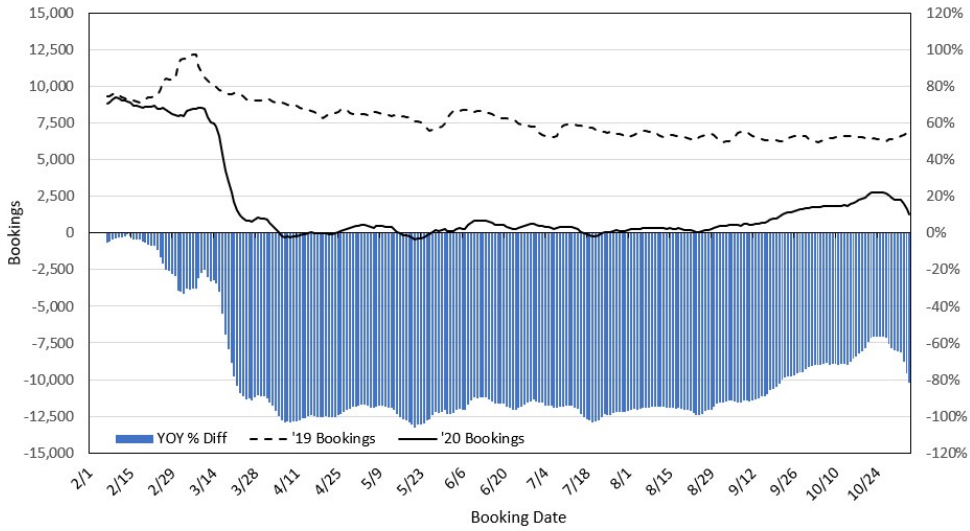
**West Hawaii Today:** [Lawmakers updated on state's COVID-19 vaccination plan](#)

**Hawaii Tribune-Herald:** [Fewer travelers arriving at Kona airport to face post-flight coronavirus screening, no change to testing at Hilo airport](#)

**Travel Weekly:** [Hyatt CEO wary of climbing Covid cases](#)

**The Wall Street Journal:** [How Coronavirus Ravaged Travel in 2020](#)

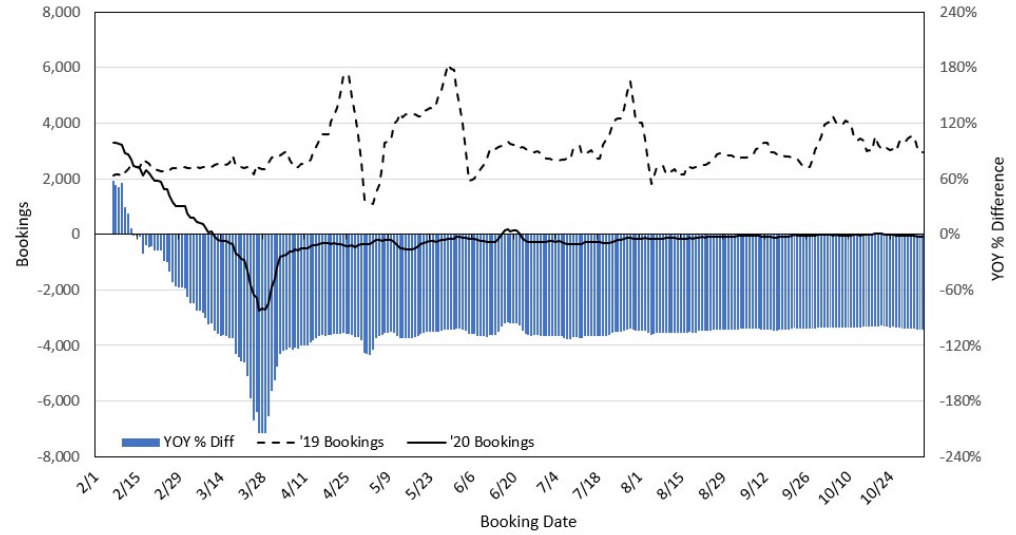
### Travel Agency Bookings to Hawaii for Future Arrivals\* Based on a 7-day Moving Average, 2020 vs 2019 U.S.



\*Future Arrivals refers to all arrivals that are 'future' relative to the referenced booking date.  
Source: Global Agency Pro

Update: Nov 4, 2020

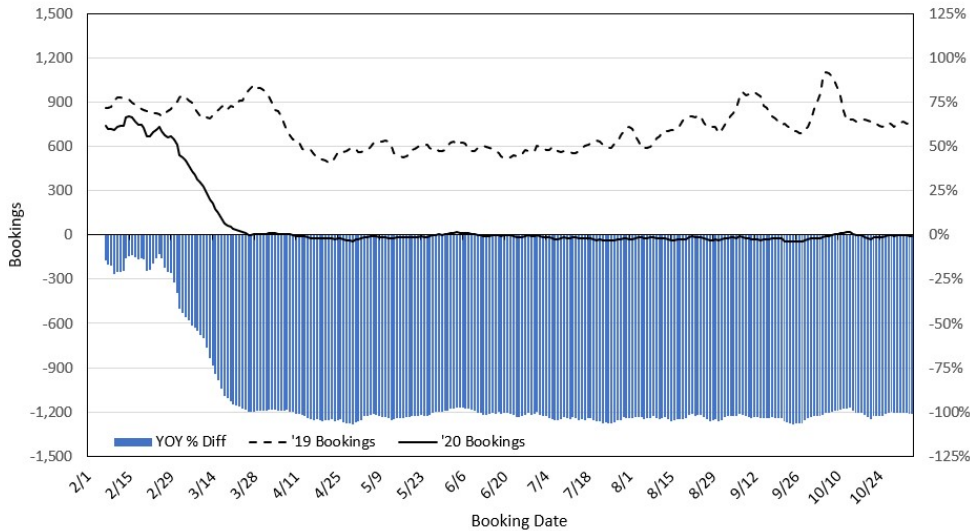
### Travel Agency Bookings to Hawaii for Future Arrivals\* Based on a 7-day Moving Average, 2020 vs 2019 Japan



\*Future Arrivals refers to all arrivals that are 'future' relative to the referenced booking date.  
Source: Global Agency Pro

Update: Nov 4, 2020

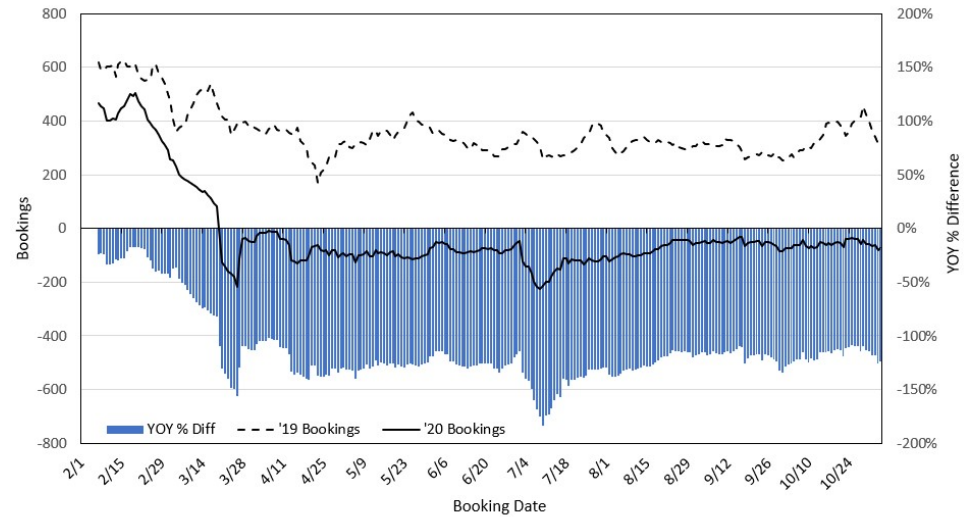
### Travel Agency Bookings to Hawaii for Future Arrivals\* Based on a 7-day Moving Average, 2020 vs 2019 Canada



\*Future Arrivals refers to all arrivals that are 'future' relative to the referenced booking date.  
Source: Global Agency Pro

Update: Nov 4, 2020

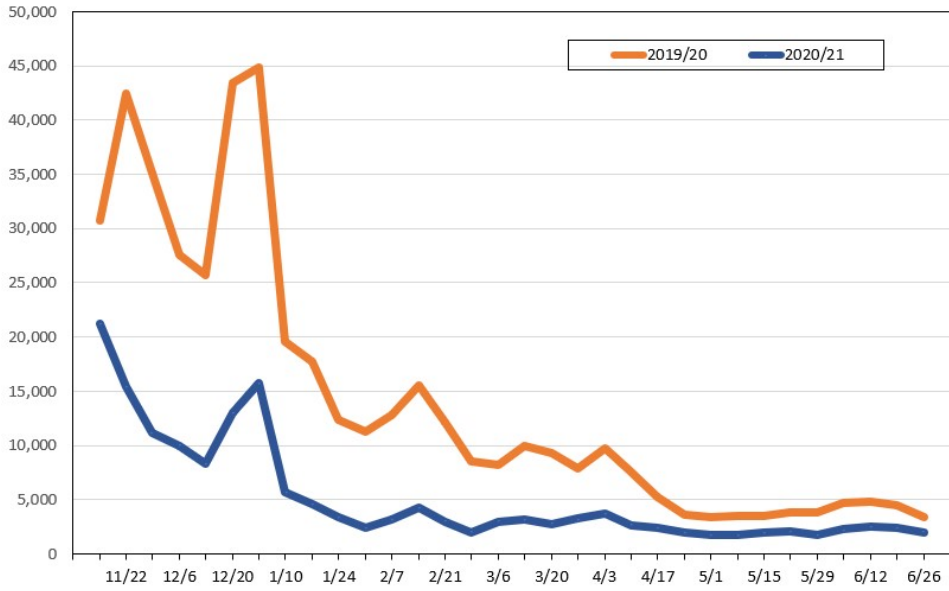
### Travel Agency Bookings to Hawaii for Future Arrivals\* Based on a 7-day Moving Average, 2020 vs 2019 Australia



\*Future Arrivals refers to all arrivals that are 'future' relative to the referenced booking date.  
Source: Global Agency Pro

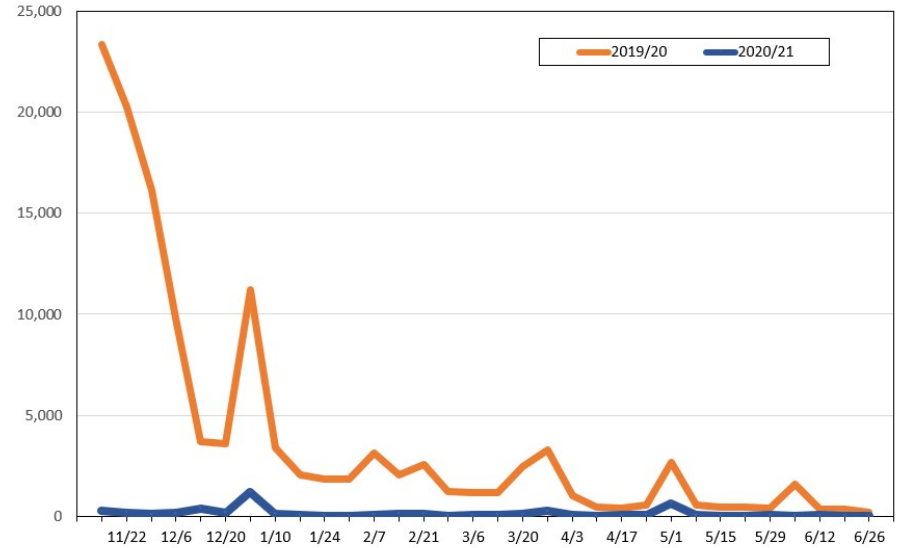
Update: Nov 4, 2020

**Travel Agency Weekly Bookings for Future Travel to Hawai'i as of November 4, 2020**  
U.S.



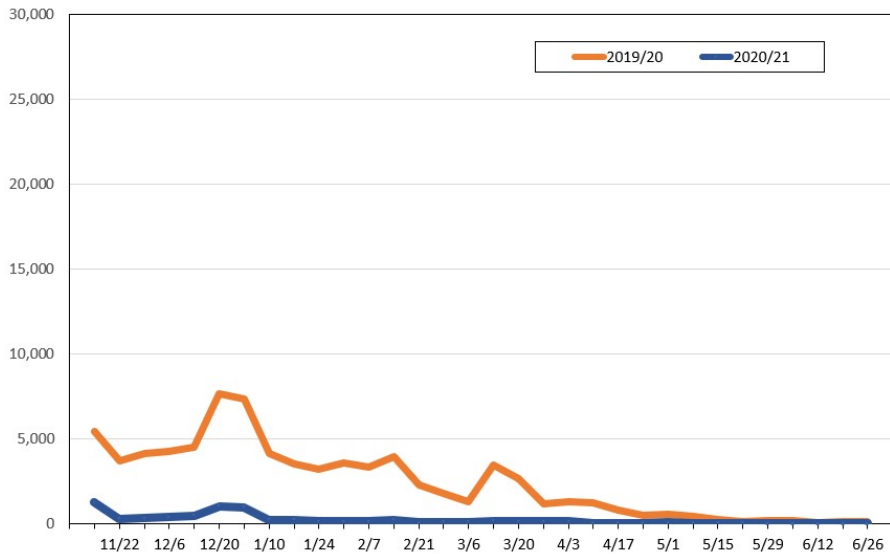
Source: Global Agency Pro, as of November 4, 2020

**Travel Agency Weekly Bookings for Future Travel to Hawai'i as of November 4, 2020**  
Japan



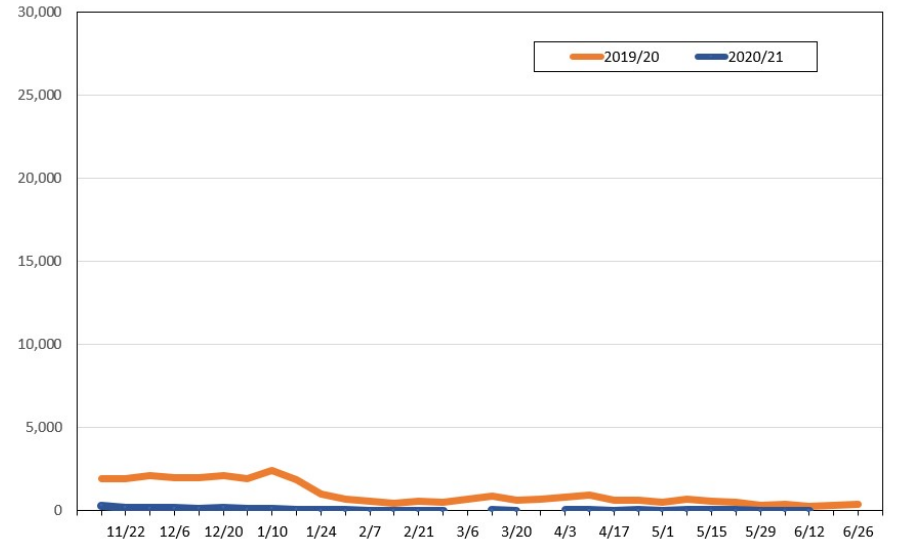
Source: Global Agency Pro, as of November 4, 2020

**Travel Agency Weekly Bookings for Future Travel to Hawai'i as of November 4, 2020**  
Canada



Source: Global Agency Pro, as of November 4, 2020

**Travel Agency Weekly Bookings for Future Travel to Hawai'i as of November 4, 2020**  
Australia



Source: Global Agency Pro, as of November 4, 2020