

# HTA COVID-19 UPDATE

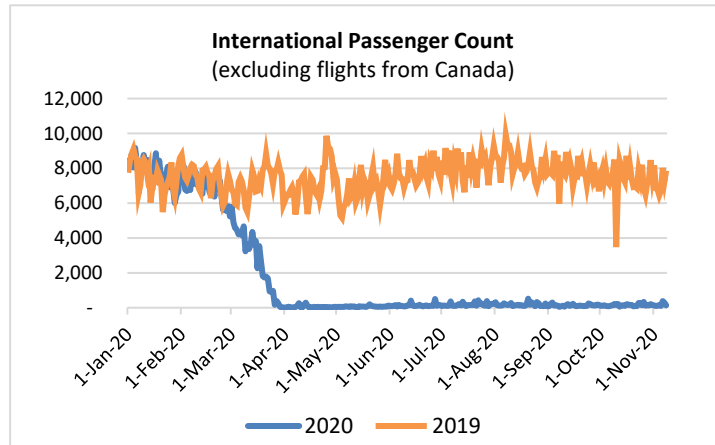
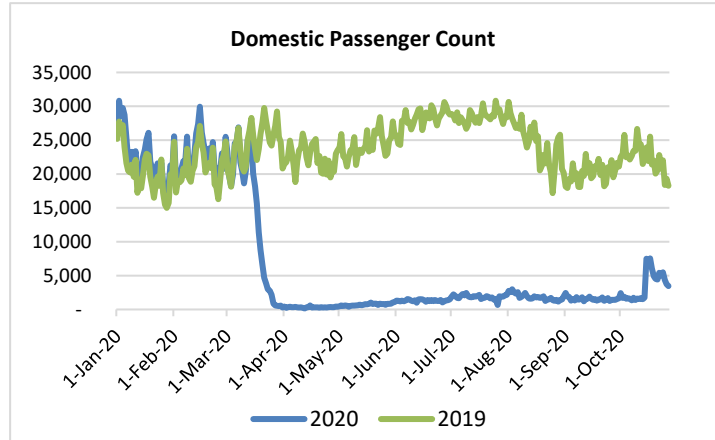
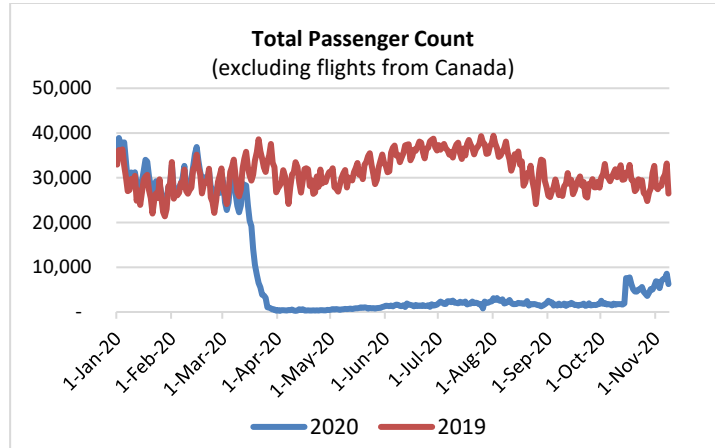
(Issued: 11/9/20 @ 4:30pm)

Reason for Trip by Arrival Airport - Transpacific Screened Passengers as of 11/08/20	Honolulu (HNL)	Kahului (OGG)	Kona (KOA)	Lihue (LIH)	Grand Total
Airline Crew	293	113	63	64	533
Corporate Meeting	5	2	0	0	7
Essential Worker	150	35	24	17	226
Honeymoon	11	22	4	7	44
Intended Resident	79	22	27	12	140
Military or Federal Government	170	1	2	3	176
Other	18	14	17	0	49
Other Business	139	40	38	22	239
Pleasure/Vacation	1,079	1,398	398	575	3,450
Returning Resident	653	117	123	47	940
To Attend School	3	0	0	0	3
To Get Married	2	12	3	13	30
Transit	174	4	1	2	181
Visiting Friends or Relatives	481	150	124	64	819
<b>Grand Total</b>	<b>3,257</b>	<b>1,930</b>	<b>824</b>	<b>826</b>	<b>6,837</b>

Source: Safe Travels program developed by the State of Hawaii Office of Enterprise Technology Services

Note: The data is preliminary and subject to change

Market Impact Update: <https://www.dropbox.com/11/09/20 HTA COVID19 Update>



## Daily Passenger Count Table

11/08/2020	Domestic	International	Total
Oahu	2938	134	4097
Maui	1722		1701
Island of Hawaii	714		835
Kauai	735		745
State	6109	134	7378

## Novel Coronavirus in Hawaii

### COVID-19 Positive Cases

Cumulative totals as of 3:00pm on November 9, 2020

Total Confirmed Cases	16,010* (64 new)
Hawaii	1,409
Kauai	73
Lanai	106
Maui	425†
Molokai	17
Oahu	13,862
Out of State	118
Pending	0
Required Hospitalization	1160‡
Hawaii Deaths	221
Cases in the past 14 days	1,306**

### Footnotes for COVID-19 Cases

\*As a result of updated information, one case from Oahu was removed from the counts.

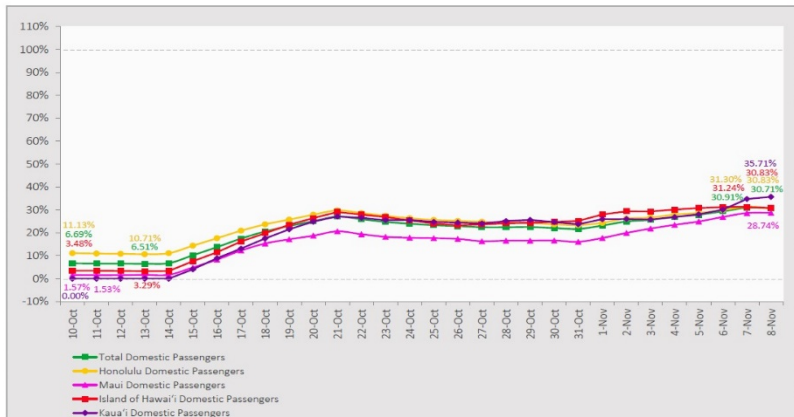
\*\*Using cases reported in the past 14 days provides a rough approximation of the number of cases currently meeting criteria for isolation. This proxy number for "active cases" resolves classification issues for cases unable to be reached or who are out of jurisdiction, for whom precise release from isolation date may not be possible to determine. It is also not influenced by lags in data entry.

†One case is a Lanai resident whose exposure is on Maui Island and who will be remaining on Maui Island for the interim.

‡Includes Hawaii residents hospitalized out of state. §Includes cases that meet isolation release criteria (Isolation should be maintained until at least 24 hours after resolution of fever and myalgia without the use of antipyretics OR at least 10 days have passed since symptom onset, whichever is longer). (The cases that have died and one case that has left the jurisdiction have been removed from these counts). Positive cases include confirmed cases, and Hawaii residents and non-residents; data are preliminary and subject to change. Note that CDC provides case counts according to states of residence.

### 7-Day Domestic by Island Moving Average Daily Passenger Volume

2020 Volume as Percentage of 2019 Volume  
Through November 8, 2020



Source: HVCB analysis based on data from DBEDT  
Note: Passenger volume figures include both visitors and residents.

### Domestic by Island Month-to-Date and Year-to-Date Daily Passenger Volume

2020 Volume versus 2019 Volume  
Through November 8, 2020

November 2020 (Month-to-Date through November 8)

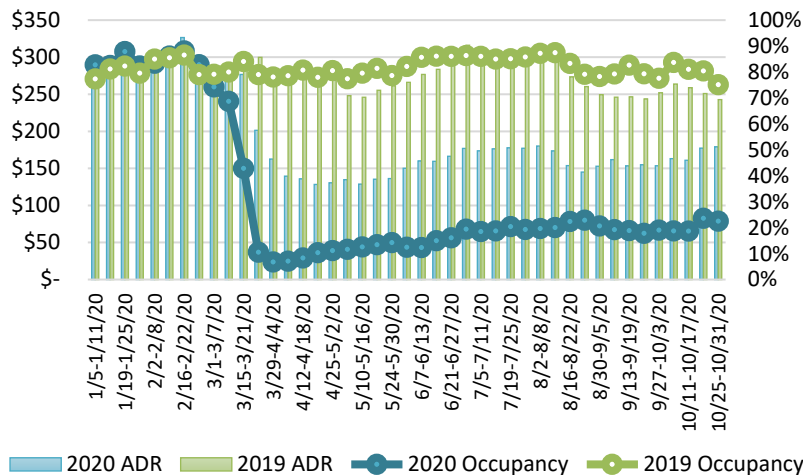
	2020	2019	Volume Change	Percent Change
Honolulu	29,592	97,192	-67,600	-69.6%
Maui County	13,192	45,530	-32,338	-71.0%
Island of Hawai'i	5,743	17,672	-11,929	-67.5%
Kaua'i	5,557	16,613	-11,056	-66.5%
<b>Total</b>	<b>54,084</b>	<b>177,007</b>	<b>-122,923</b>	<b>-69.4%</b>

2020 (Year-to-Date through November 8)

	2020	2019	Volume Change	Percent Change
Honolulu	1,238,220	3,854,324	-2,616,104	-67.9%
Maui County	477,069	1,875,718	-1,398,649	-74.6%
Island of Hawai'i	240,390	821,708	-581,318	-70.7%
Kaua'i	160,465	640,622	-480,157	-75.0%
<b>Total</b>	<b>2,116,144</b>	<b>7,192,372</b>	<b>-5,076,229</b>	<b>-70.6%</b>

Source: HVCB analysis based on data from DBEDT  
Note: Passenger volume figures include both visitors and residents. Total includes other international passengers. 2020 includes one additional day due to Leap Year (February 29th, 2020).

### State of Hawai'i Hotel Performance by Week - 2020 vs 2019



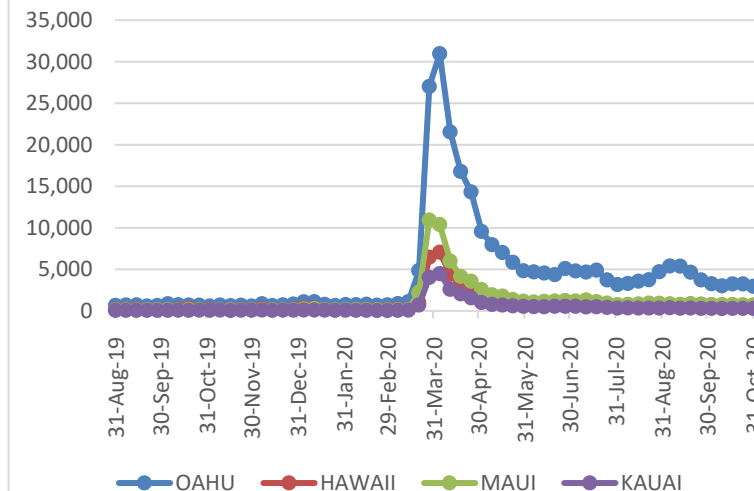
Source: STR, Inc. © Copyright 2020 Hawai'i Tourism Authority

### Hawaii Hotel Performance Info:

For the week of October 25 – October 31, 2020

	Occupancy	ADR	RevPAR
<b>State of Hawaii</b>	22.5%	\$ 179.09	\$ 40.32
<b>Oahu</b>	23.8%	\$ 162.16	\$ 38.64
<b>Maui County</b>	18.5%	\$ 237.87	\$ 44.07
<b>Kauai County</b>	23.6%	\$ 197.86	\$ 46.66
<b>Island of Hawaii</b>	24.2%	\$ 142.75	\$ 34.49

### 2020 Initial Weekly Unemployment Claims by Island



### Weekly Unemployment Initial Claims: October 31, 2020

<b>State of Hawaii</b>	4,700
<b>C&amp;C of Oahu</b>	2,947
<b>Hawaii County</b>	660
<b>Maui County</b>	695
<b>Kauai County</b>	304
<b>Agent</b> (filed in Hawaii against another state)	94

## News Highlights

November 9, 2020

**Honolulu Star Advertiser:** [Japan helps diversify Hawaii's tourism recovery](#)

**KHON2:** [Kauai cases rise, officials question surveillance testing](#)

**KHON2:** [Kauai's hospitality industry workers encouraged to take COVID-19 test](#)

**KHON2:** [TheBus confirms an operator tested positive for coronavirus](#)

**Honolulu Public Radio:** [Five Days Of Triple-Digit COVID-19 Case Counts Could Threaten Reopening Ahead Of Holidays](#)

**Honolulu Civil Beat:** [Executives Foresee Long-Term Changes To The Workplace After COVID-19](#)

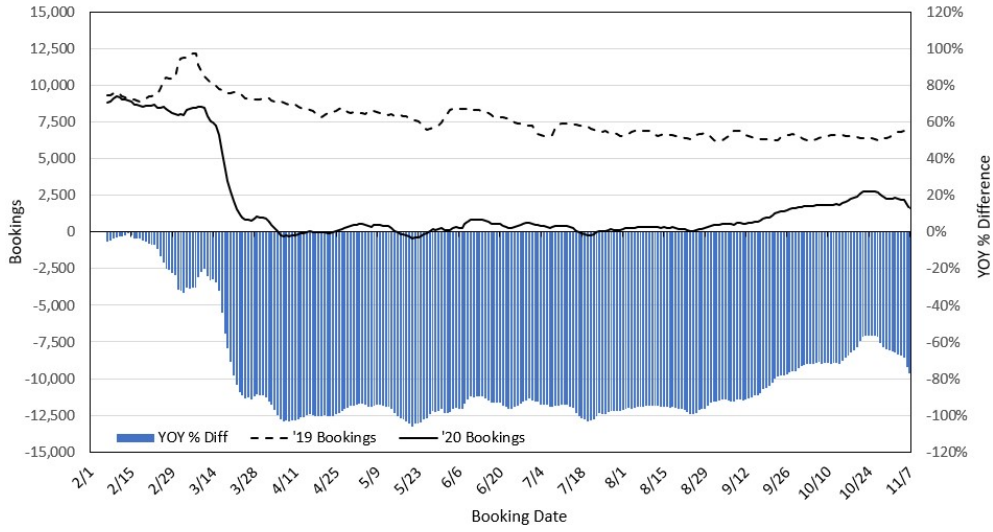
**Maui Now:** [Hawaii County Scales Back on Post-Arrival Testing](#)

**West Hawaii Today:** [Kim seeks help from tourism industry leaders](#)

**Big Island Now:** [Hawaii's Safe Travel Program is Luring Tourists Back, But Very Slowly](#)

**Independent:** [Family turned away from Hawaii despite having negative Covid-19 tests](#)

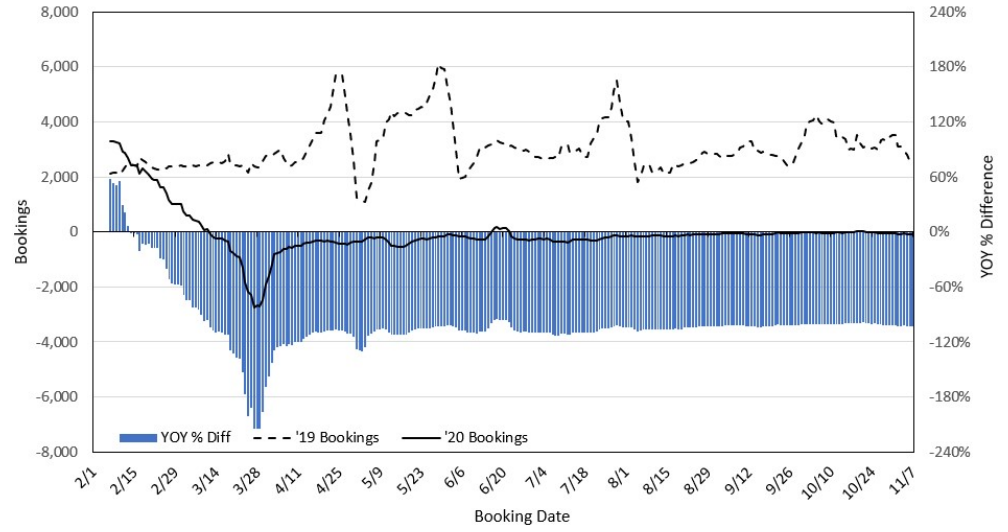
**Travel Agency Bookings to Hawaii for Future Arrivals\*  
Based on a 7-day Moving Average, 2020 vs 2019  
U.S.**



\*Future Arrivals refers to all arrivals that are 'future' relative to the referenced booking date.  
Source: Global Agency Pro

Update: Nov 7, 2020

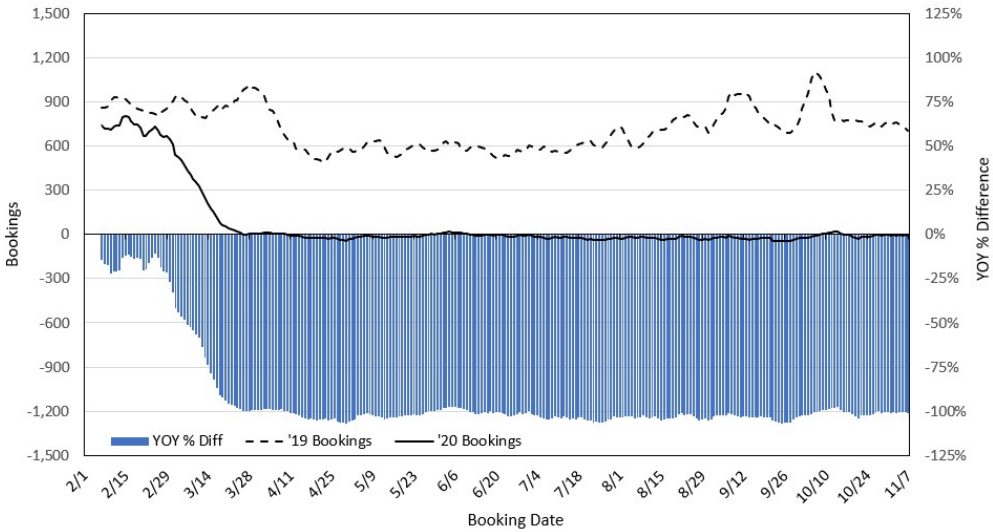
**Travel Agency Bookings to Hawaii for Future Arrivals\*  
Based on a 7-day Moving Average, 2020 vs 2019  
Japan**



\*Future Arrivals refers to all arrivals that are 'future' relative to the referenced booking date.  
Source: Global Agency Pro

Update: Nov 7, 2020

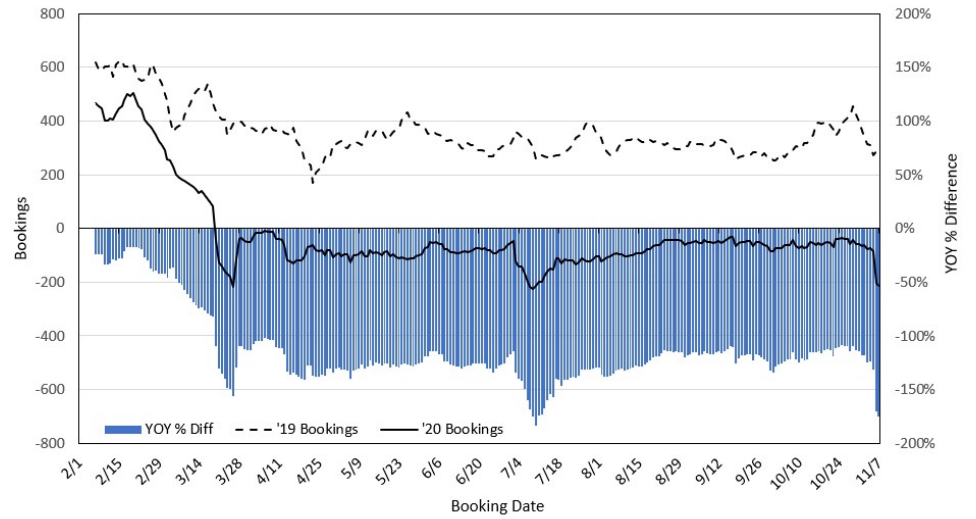
**Travel Agency Bookings to Hawaii for Future Arrivals\*  
Based on a 7-day Moving Average, 2020 vs 2019  
Canada**



\*Future Arrivals refers to all arrivals that are 'future' relative to the referenced booking date.  
Source: Global Agency Pro

Update: Nov 7, 2020

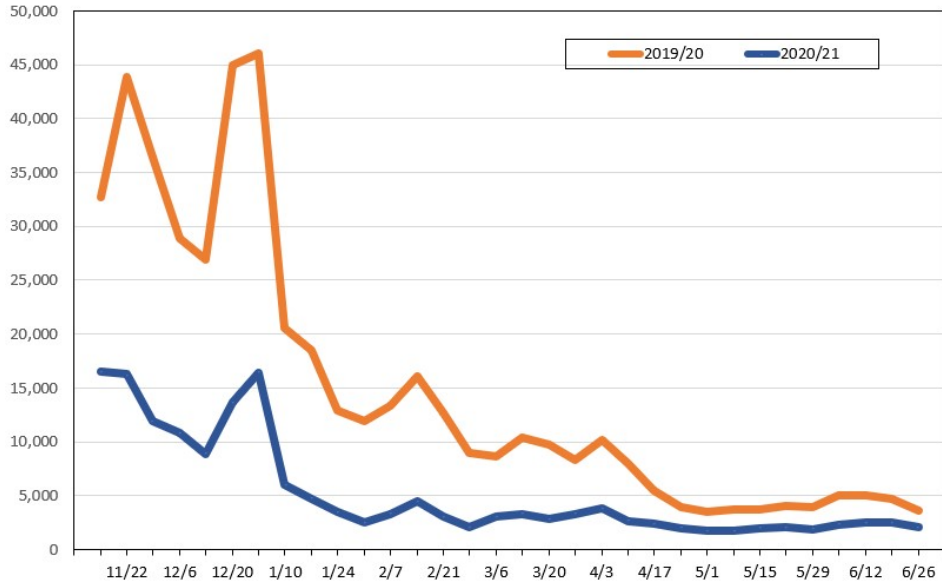
**Travel Agency Bookings to Hawaii for Future Arrivals\*  
Based on a 7-day Moving Average, 2020 vs 2019  
Australia**



\*Future Arrivals refers to all arrivals that are 'future' relative to the referenced booking date.  
Source: Global Agency Pro

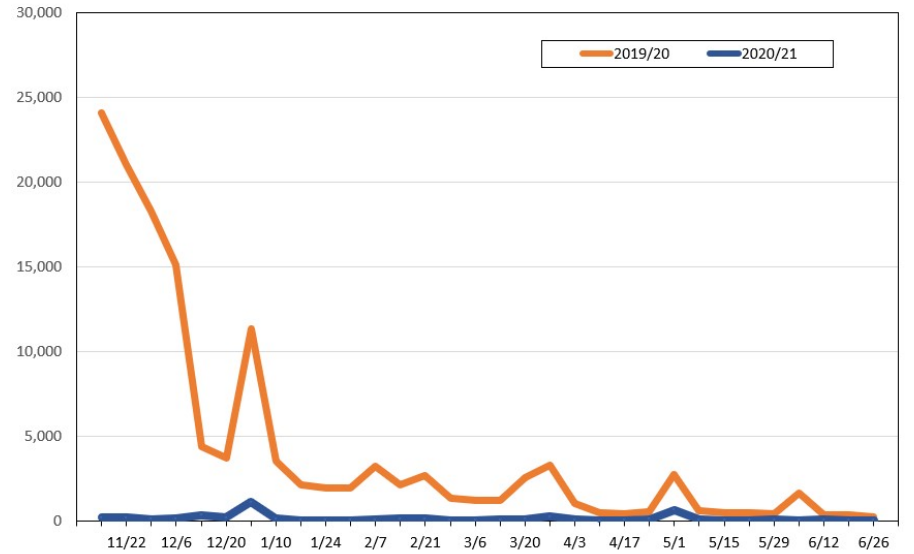
Update: Nov 7, 2020

**Travel Agency Weekly Bookings for Future Travel to Hawai'i as of November 7, 2020**  
U.S.



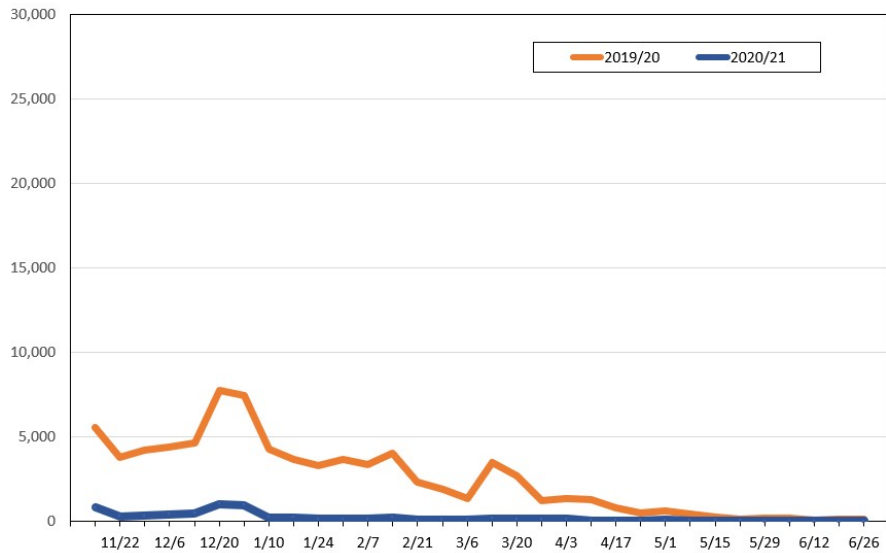
Source: Global Agency Pro, as of November 7, 2020

**Travel Agency Weekly Bookings for Future Travel to Hawai'i as of November 7, 2020**  
Japan



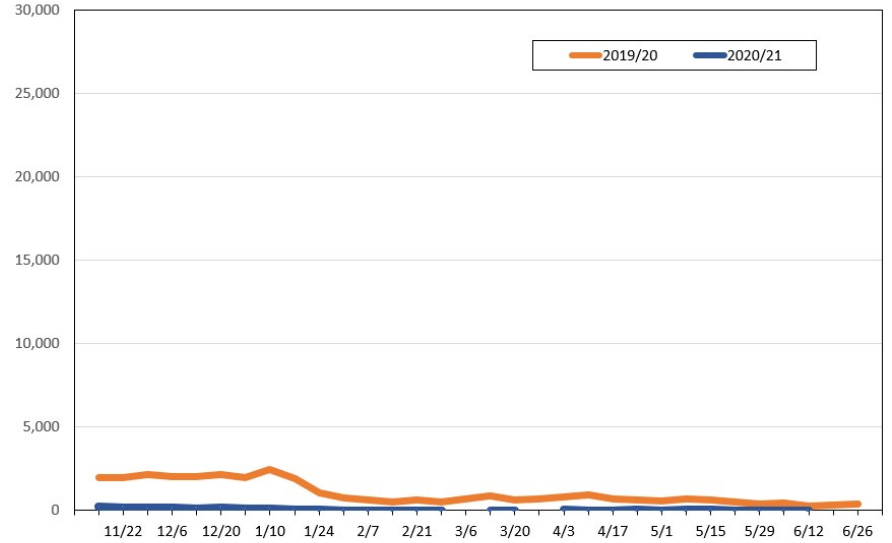
Source: Global Agency Pro, as of November 7, 2020

**Travel Agency Weekly Bookings for Future Travel to Hawai'i as of November 7, 2020**  
Canada



Source: Global Agency Pro, as of November 7, 2020

**Travel Agency Weekly Bookings for Future Travel to Hawai'i as of November 7, 2020**  
Australia



Source: Global Agency Pro, as of November 7, 2020