

HTA COVID-19 UPDATE

(Issued: 11/10/20 @ 4:30pm)

Reason for Trip by Arrival Airport - Transpacific Screened Passengers as of 11/09/20	Honolulu (HNL)	Kahului (OGG)	Kona (KOA)	Lihue (LIH)	Grand Total
Airline Crew	339	100	47	53	539
Corporate Meeting	5	2	0	0	7
Essential Worker	133	20	19	15	187
Honeymoon	19	28	5	2	54
Intended Resident	120	18	33	9	180
Military or Federal Government	199	0	0	2	201
Other	39	25	22	22	108
Other Business	132	61	29	21	243
Pleasure/Vacation	1,123	1,050	348	430	2,951
Returning Resident	1,024	134	125	47	1,330
To Attend School	11	0	0	0	11
To Get Married	5	4	0	0	9
Transit	264	9	1	0	274
Visiting Friends or Relatives	738	193	167	83	1,181
Grand Total	4,151	1,644	796	684	7,275

Source: Safe Travels program developed by the State of Hawaii Office of Enterprise Technology Services
Note: The data is preliminary and subject to change

Market Impact Update: <https://www.dropbox.com/11/10/20 HTA COVID19 Update>

Novel Coronavirus in Hawaii

COVID-19 Positive Cases

Cumulative totals as of 3:00pm on November 10, 2020

Total Confirmed Cases	16,088* (78 new)
Hawaii	1,413
Kauai	71
Lanai	106
Maui	430†
Molokai	17
Oahu	13,924
Out of State	127
Pending	0
Required Hospitalization	1180‡
Hawaii Deaths	222
Cases in the past 14 days	1,319**

Footnotes for COVID-19 Cases

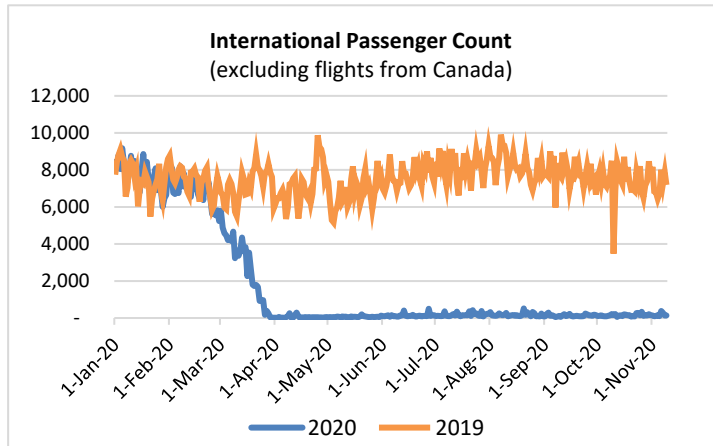
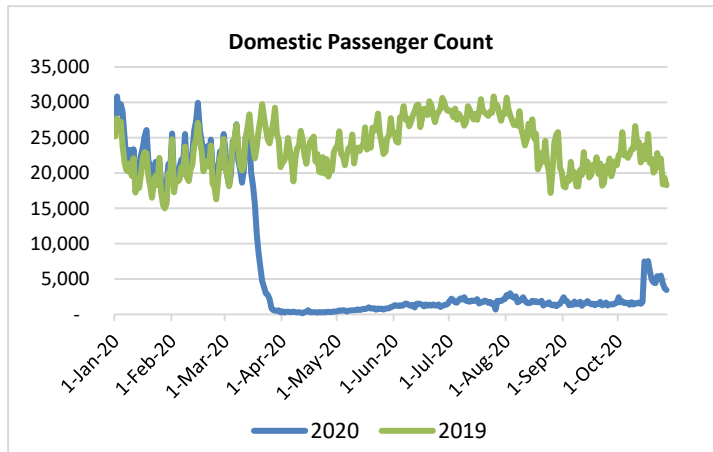
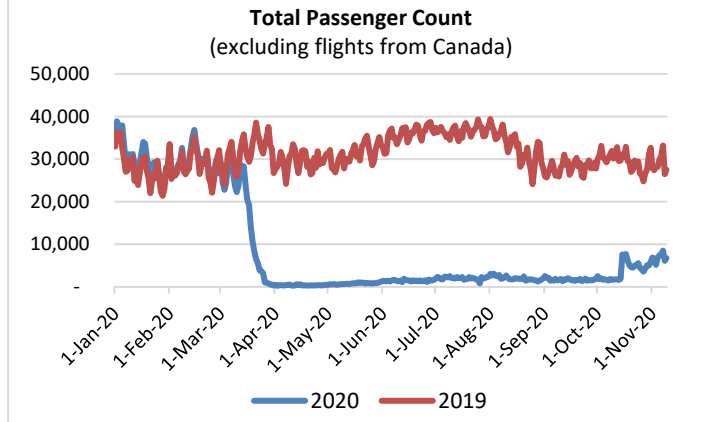
* As a result of updated information, two cases on Kauai were re-categorized to Hawaii residents diagnosed outside of the state.

**Using cases reported in the past 14 days provides a rough approximation of the number of cases currently meeting criteria for isolation. This proxy number for "active cases" resolves classification issues for cases unable to be reached or who are out of jurisdiction, for whom precise release from isolation date may not be possible to determine. It is also not influenced by lags in data entry.

†One case is a Lanai resident whose exposure is on Maui Island and who will be remaining on Maui Island for the interim.

‡Includes Hawaii residents hospitalized out of state.

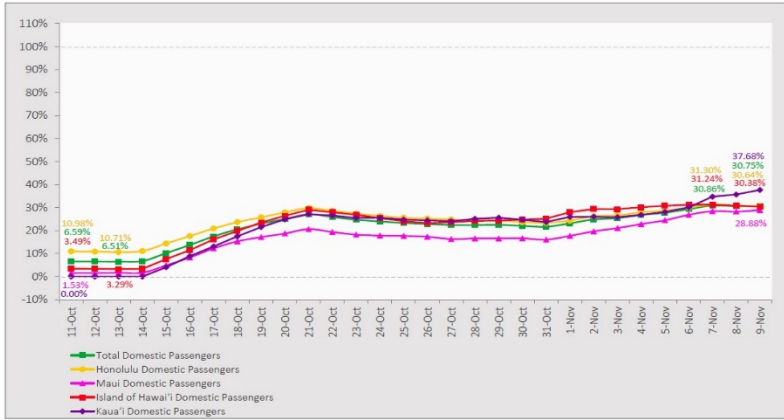
§Includes cases that meet isolation release criteria (Isolation should be maintained until at least 24 hours after resolution of fever and myalgia without the use of antipyretics OR at least 10 days have passed since symptom onset, whichever is longer). (The cases that have died and one case that has left the jurisdiction have been removed from these counts). Positive cases include confirmed cases, and Hawaii residents and non-residents; data are preliminary and subject to change. Note that CDC provides case counts according to states of residence.



Daily Passenger Count Table

11/09/2020	Domestic	International	Total
Oahu	4024	137	4161
Maui	1458		1458
Island of Hawaii	580		580
Kauai	599		599
State	6661	137	6798

7-Day Domestic by Island Moving Average Daily Passenger Volume
 2020 Volume as Percentage of 2019 Volume
 Through November 9, 2020



Source: HVCB analysis based on data from DBEDT
 Note: Passenger volume figures include both visitors and residents.

Domestic by Island Month-to-Date and Year-to-Date Daily Passenger Volume
 2020 Volume versus 2019 Volume
 Through November 9, 2020

November 2020 (Month-to-Date through November 9)

	2020	2019	Volume Change	Percent Change
Honolulu	33,616	110,289	-76,673	-69.5%
Maui County	14,455	53,127	-38,672	-72.8%
Island of Hawai'i	6,323	20,636	-14,313	-69.4%
Kaua'i	6,156	18,884	-12,728	-67.4%
Total	60,550	202,936	-142,386	-70.2%

2020 (Year-to-Date through November 9)

	2020	2019	Volume Change	Percent Change
Honolulu	1,238,220	3,854,324	-2,616,104	-67.9%
Maui County	477,069	1,875,718	-1,398,649	-74.6%
Island of Hawai'i	240,390	821,708	-581,318	-70.7%
Kaua'i	160,465	640,622	-480,157	-75.0%
Total	2,116,144	7,192,372	-5,076,229	-70.6%

Source: HVCB analysis based on data from DBEDT
 Note: Passenger volume figures include both visitors and residents. Total includes other international passengers. 2020 includes one additional day due to Leap Year (February 29th, 2020).

News Highlights

November 10, 2020

Hawaii News Now: [Oahu businesses, residents worry rising number of COVID-19 cases could trigger restrictions](#)

Honolulu Star Advertiser: [VIDEO: Hawaii Quarantine Kapu Breakers group continues to assist local authorities](#)

KHON2: [Deadline to spend coronavirus funds approaches](#)

KITV4: [Oahu needs to stay under 7-day average of less than 50 COVID-19 cases to move to Tier 3](#)

Hawaii Tribune-Herald: [House COVID-19 panel hears presentations about state's economic recovery, worries about another spike in cases](#)

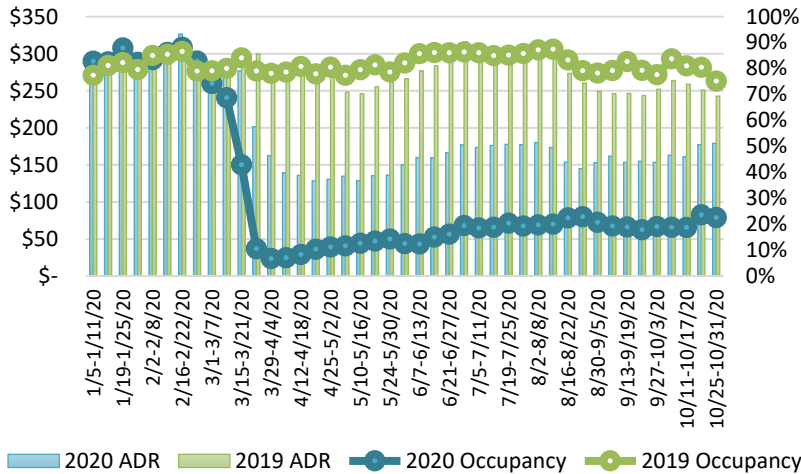
Maui Now: [Drive-Through COVID-19 Testing on Friday, Nov. 13, in Pukalani](#)

New York Times: [Travel and Coronavirus Testing: Your Questions Answered](#)

SF Gate: [Hawaii scales back post-flight COVID-19 tests, citing low number of cases](#)

Forbes: [Paradise Regained: Hawaii Is Now Open For Safe Travel To The Islands](#)

State of Hawai'i Hotel Performance by Week - 2020 vs 2019



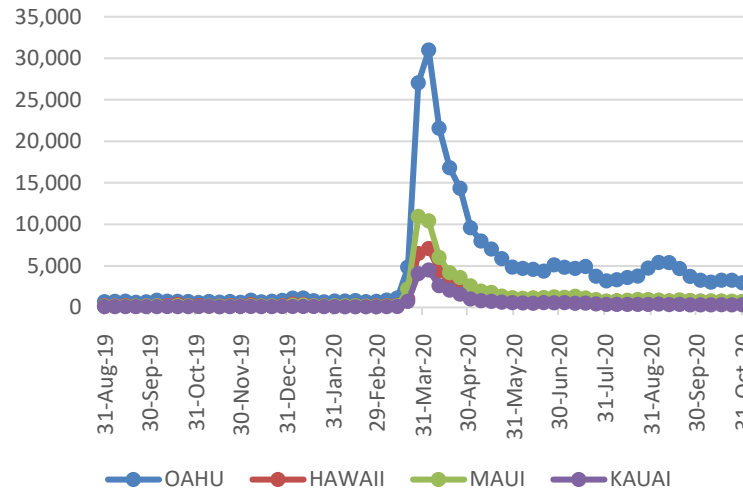
Source: STR, Inc. © Copyright 2020 Hawai'i Tourism Authority

Hawaii Hotel Performance Info:

For the week of October 25 – October 31, 2020

	Occupancy	ADR	RevPAR
State of Hawaii	22.5%	\$ 179.09	\$ 40.32
Oahu	23.8%	\$ 162.16	\$ 38.64
Maui County	18.5%	\$ 237.87	\$ 44.07
Kauai County	23.6%	\$ 197.86	\$ 46.66
Island of Hawaii	24.2%	\$ 142.75	\$ 34.49

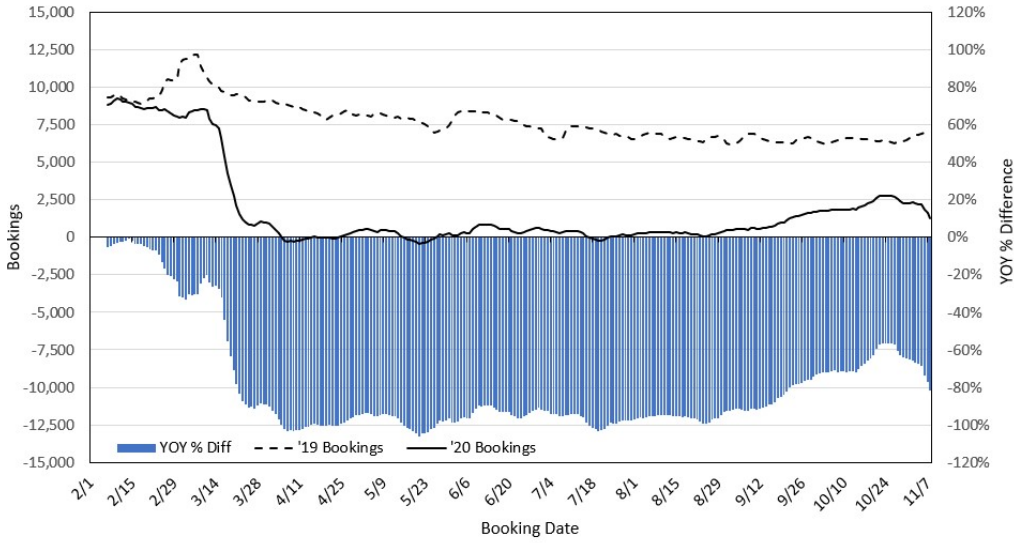
2020 Initial Weekly Unemployment Claims by Island



Weekly Unemployment Initial Claims: October 31, 2020

State of Hawaii	4,700
C&C of Oahu	2,947
Hawaii County	660
Maui County	695
Kauai County	304
Agent (filed in Hawaii against another state)	94

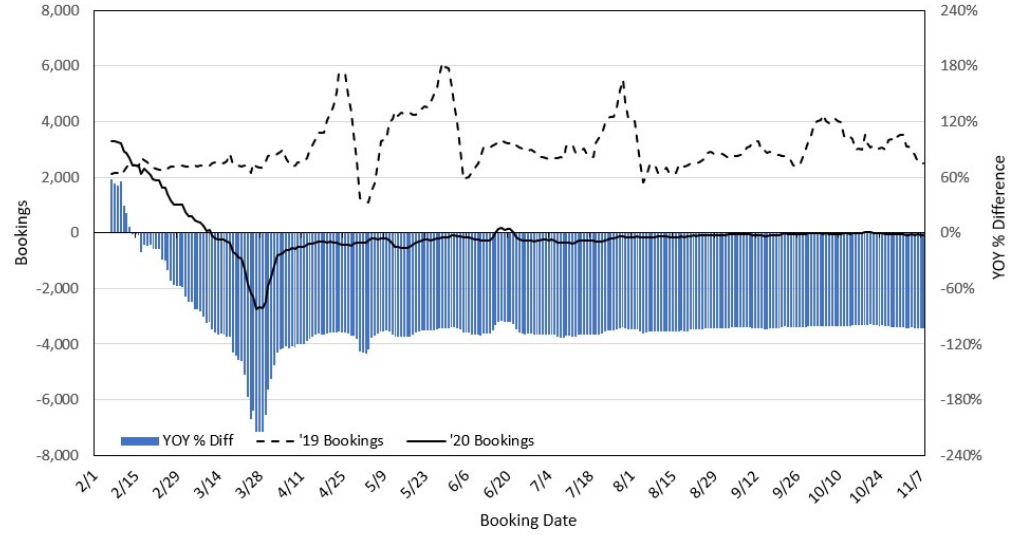
**Travel Agency Bookings to Hawaii for Future Arrivals*
Based on a 7-day Moving Average, 2020 vs 2019
U.S.**



*Future Arrivals refers to all arrivals that are 'future' relative to the referenced booking date.
Source: Global Agency Pro

Update: Nov 8, 2020

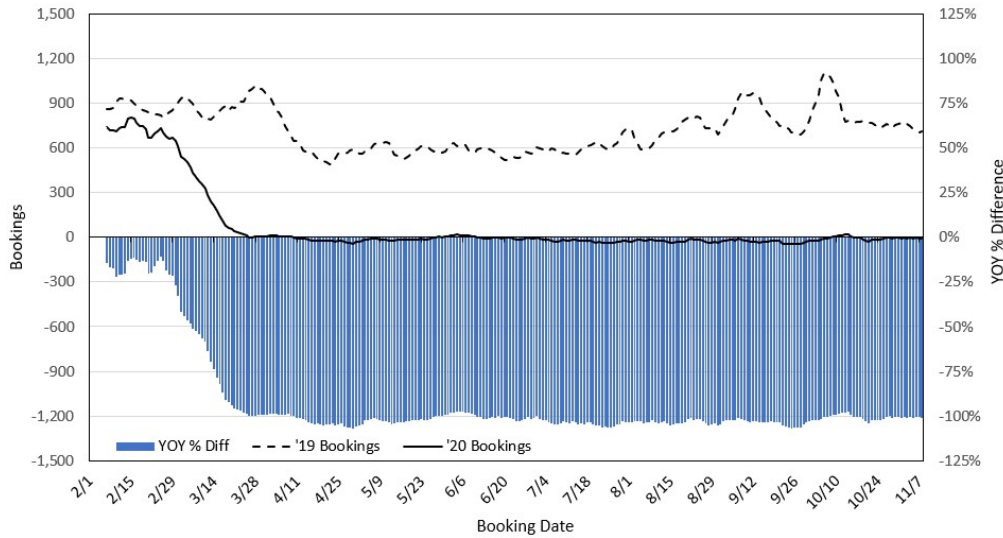
**Travel Agency Bookings to Hawaii for Future Arrivals*
Based on a 7-day Moving Average, 2020 vs 2019
Japan**



*Future Arrivals refers to all arrivals that are 'future' relative to the referenced booking date.
Source: Global Agency Pro

Update: Nov 8, 2020

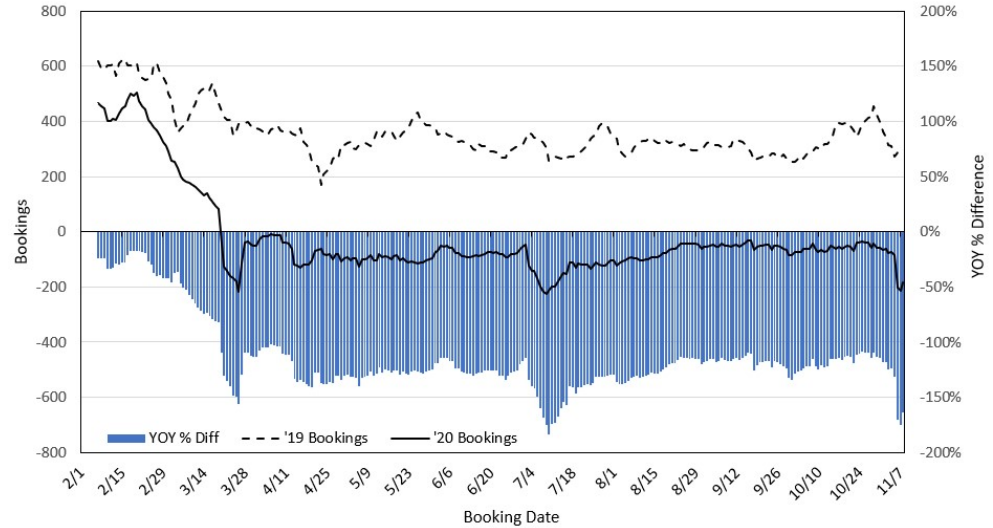
**Travel Agency Bookings to Hawaii for Future Arrivals*
Based on a 7-day Moving Average, 2020 vs 2019
Canada**



*Future Arrivals refers to all arrivals that are 'future' relative to the referenced booking date.
Source: Global Agency Pro

Update: Nov 8, 2020

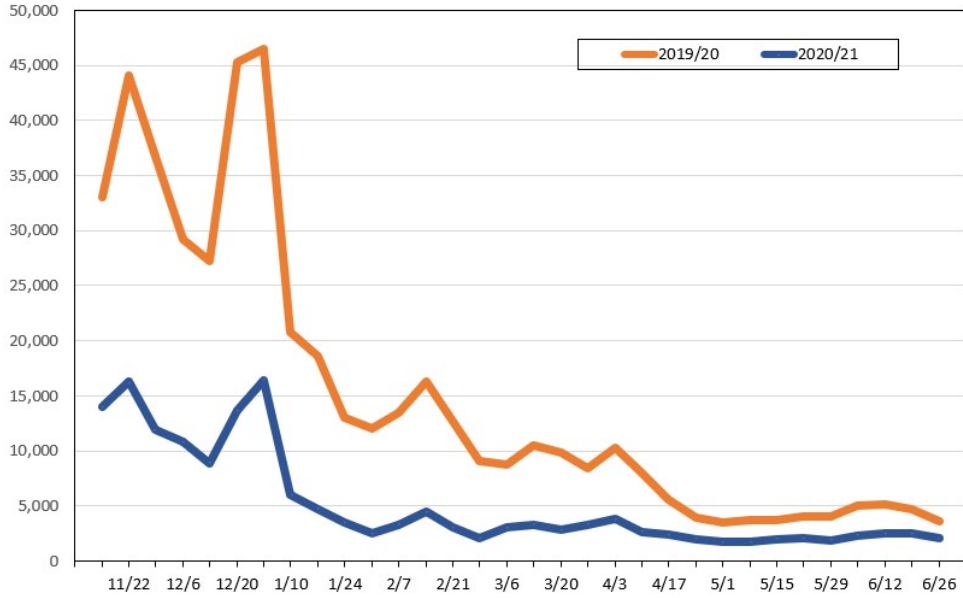
**Travel Agency Bookings to Hawaii for Future Arrivals*
Based on a 7-day Moving Average, 2020 vs 2019
Australia**



*Future Arrivals refers to all arrivals that are 'future' relative to the referenced booking date.
Source: Global Agency Pro

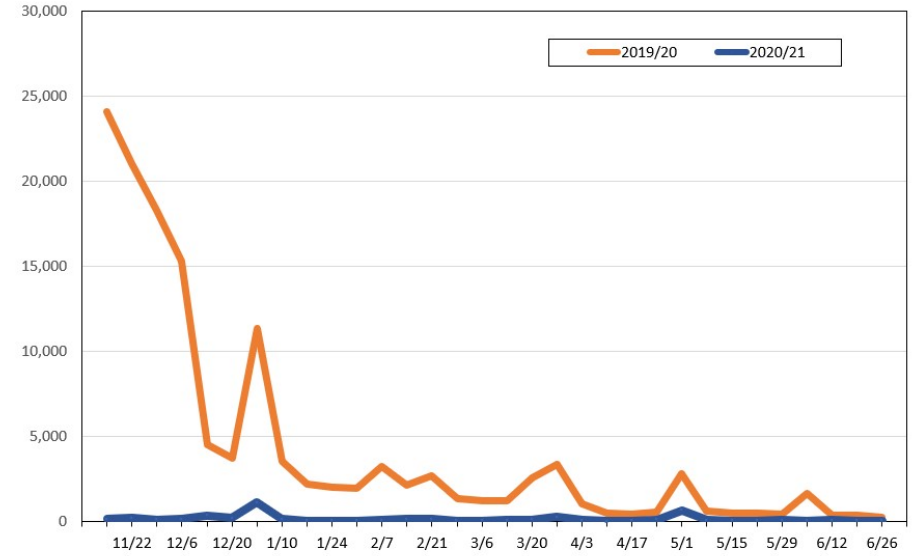
Update: Nov 8, 2020

Travel Agency Weekly Bookings for Future Travel to Hawai'i as of November 8, 2020
U.S.



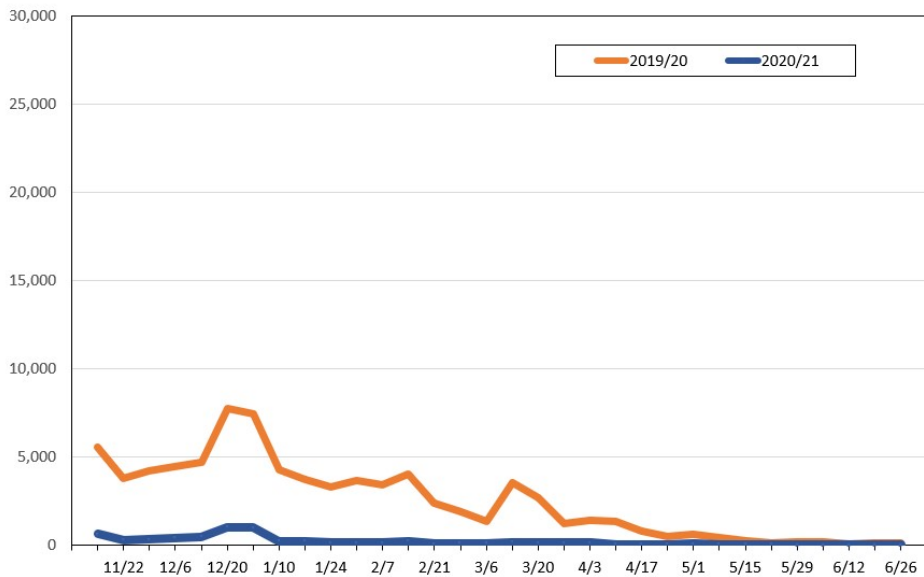
Source: Global Agency Pro, as of November 8, 2020

Travel Agency Weekly Bookings for Future Travel to Hawai'i as of November 8, 2020
Japan



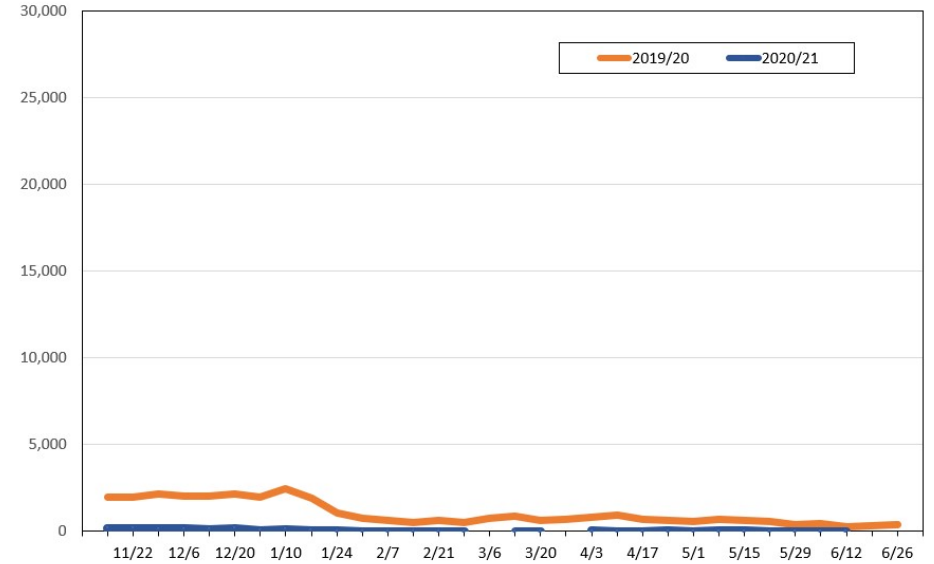
Source: Global Agency Pro, as of November 8, 2020

Travel Agency Weekly Bookings for Future Travel to Hawai'i as of November 8, 2020
Canada



Source: Global Agency Pro, as of November 8, 2020

Travel Agency Weekly Bookings for Future Travel to Hawai'i as of November 8, 2020
Australia



Source: Global Agency Pro, as of November 8, 2020