

HTA COVID-19 UPDATE

(Issued: 11/12/20 @ 4:30pm)

Reason for Trip by Arrival Airport - Transpacific Screened Passengers as of 11/11/20	Honolulu (HNL)	Kahului (OGG)	Kona (KOA)	Lihue (LIH)	Grand Total
Airline Crew	328	104	54	54	540
Corporate Meeting	0	3	0	0	3
Essential Worker	69	21	16	8	114
Honeymoon	7	6	0	4	17
Incentive Trip	1	1	0	0	2
Intended Resident	94	28	34	14	170
Military or Federal Government	181	1	2	0	184
Other	63	22	18	17	120
Other Business	146	27	25	20	218
Pleasure/Vacation	1,397	1,415	402	592	3,806
Returning Resident	693	146	142	53	1,034
To Attend School	3	0	1	0	4
To Get Married	3	1	0	4	8
Transit	194	3	0	0	197
Visiting Friends or Relatives	854	206	148	90	1,298
Grand Total	4,033	1,984	842	856	7,715

Source: Safe Travels program developed by the State of Hawaii Office of Enterprise Technology Services

Note: The data is preliminary and subject to change

Market Impact Update: <https://www.dropbox.com/11/12/20 HTA COVID19 Update>

Novel Coronavirus in Hawaii

COVID-19 Positive Cases

Cumulative totals as of 3:00pm on November 12, 2020

Total Confirmed Cases	16,302* (97 new)
Hawaii	1,451
Kauai	77
Lanai	106
Maui	442†
Molokai	17
Oahu	14,080
Out of State	131
Pending	0
Required Hospitalization	1187‡
Hawaii Deaths	222
Cases in the past 14 days	1,397**

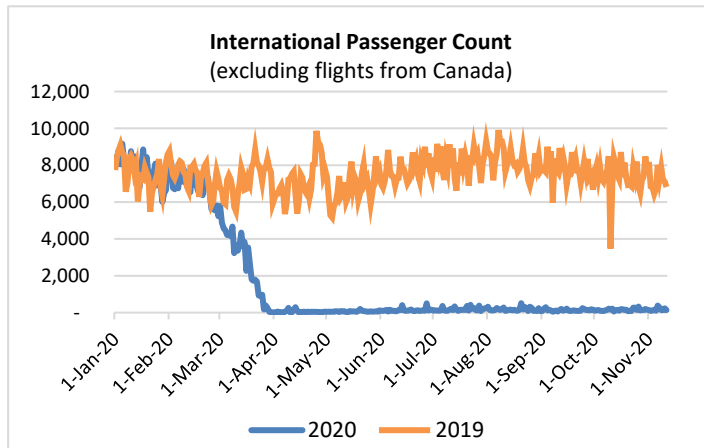
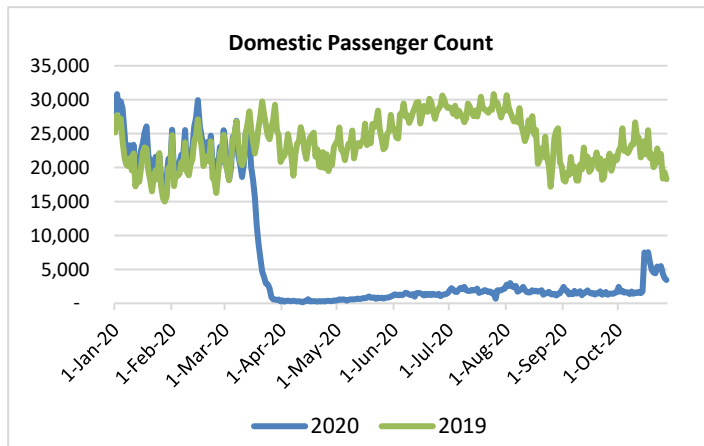
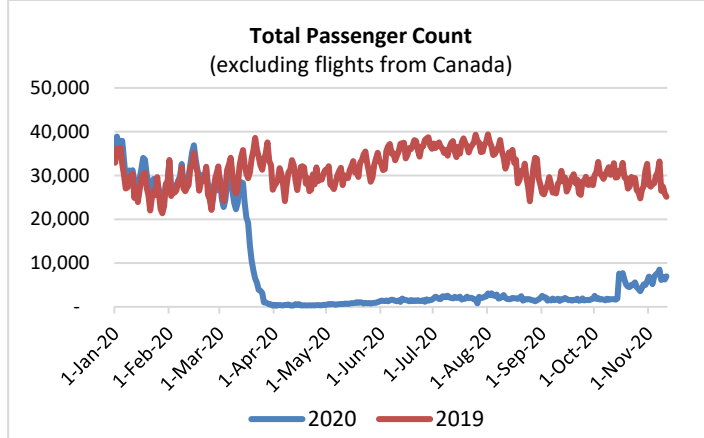
Footnotes for COVID-19 Cases

* As a result of updated information, two cases on Kauai were re-categorized to Hawaii residents diagnosed outside of the state.

**Using cases reported in the past 14 days provides a rough approximation of the number of cases currently meeting criteria for isolation. This proxy number for "active cases" resolves classification issues for cases unable to be reached or who are out of jurisdiction, for whom precise release from isolation date may not be possible to determine. It is also not influenced by lags in data entry.

†One case is a Lanai resident whose exposure is on Maui Island and who will be remaining on Maui Island for the interim.

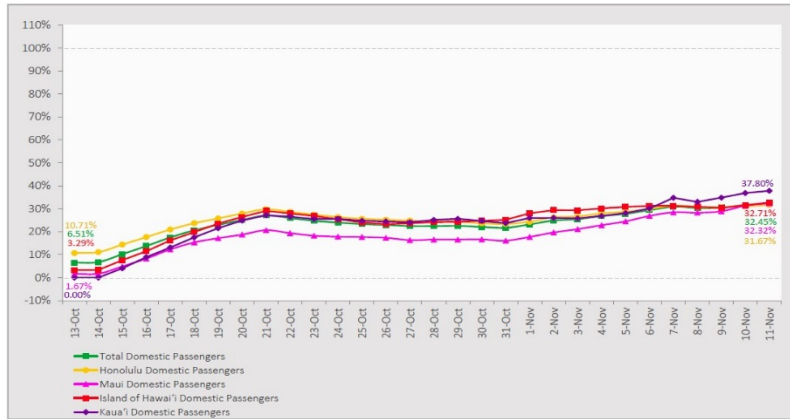
‡Includes Hawaii residents hospitalized out of state. §Includes cases that meet isolation release criteria (Isolation should be maintained until at least 24 hours after resolution of fever and myalgia without the use of antipyretics OR at least 10 days have passed since symptom onset, whichever is longer). (The cases that have died and one case that has left the jurisdiction have been removed from these counts). Positive cases include confirmed cases, and Hawaii residents and non-residents; data are preliminary and subject to change. Note that CDC provides case counts according to states of residence.



Daily Passenger Count Table

11/11/2020	Domestic	International	Total
Oahu	3840	139	4161
Maui	1589		1458
Island of Hawaii	752		580
Kauai	657		599
State	6838	139	6798

7-Day Domestic by Island Moving Average Daily Passenger Volume
 2020 Volume as Percentage of 2019 Volume
 Through November 11, 2020



Source: HVCB analysis based on data from DBEDT
 Note: Passenger volume figures include both visitors and residents.

Domestic by Island Month-to-Date and Year-to-Date Daily Passenger Volume
 2020 Volume versus 2019 Volume
 Through November 11, 2020

November 2020 (Month-to-Date through November 11)

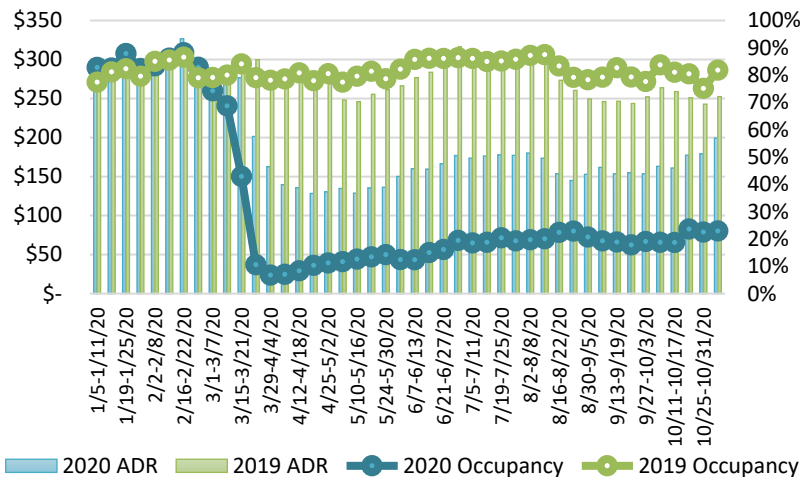
	2020	2019	Volume Change	Percent Change
Honolulu	40,811	132,964	-92,153	-69.3%
Maui County	17,754	62,512	-44,758	-71.6%
Island of Hawai'i	7,622	24,445	-16,823	-68.8%
Kaua'i	6,837	21,879	-15,042	-68.7%
Total	73,024	241,800	-168,776	-69.8%

2020 (Year-to-Date through November 11)

	2020	2019	Volume Change	Percent Change
Honolulu	1,238,220	3,854,324	-2,616,104	-67.9%
Maui County	477,069	1,875,718	-1,398,649	-74.6%
Island of Hawai'i	240,390	821,708	-581,318	-70.7%
Kaua'i	160,465	640,622	-480,157	-75.0%
Total	2,116,144	7,192,372	-5,076,229	-70.6%

Source: HVCB analysis based on data from DBEDT
 Note: Passenger volume figures include both visitors and residents. Total includes other international passengers. 2020 includes one additional day due to Leap Year (February 29th, 2020).

State of Hawai'i Hotel Performance by Week - 2020 vs 2019



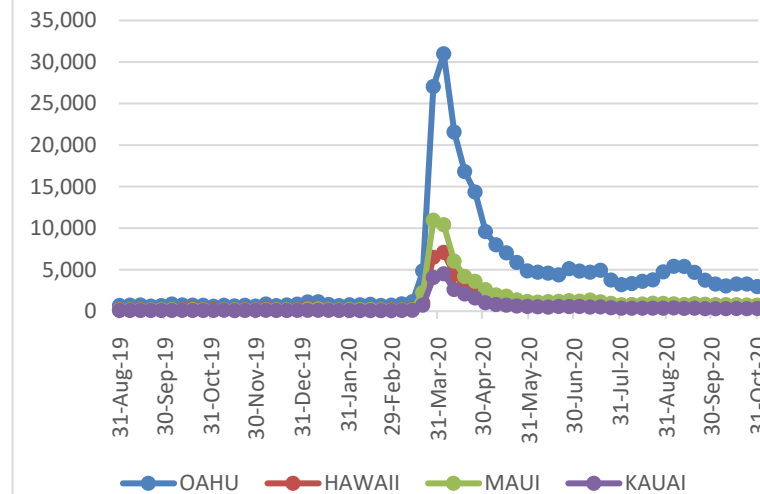
Source: STR, Inc. © Copyright 2020 Hawai'i Tourism Authority

Hawaii Hotel Performance Info:

For the week of November 1 – November 7, 2020

	Occupancy	ADR	RevPAR
State of Hawaii	22.9%	\$ 199.34	\$ 45.70
Oahu	24.0%	\$ 161.02	\$ 38.65
Maui County	18.4%	\$ 302.43	\$ 55.55
Kauai County	25.6%	\$ 198.64	\$ 50.91
Island of Hawaii	28.1%	\$ 182.21	\$ 51.25

2020 Initial Weekly Unemployment Claims by Island



Weekly Unemployment Initial Claims: October 31, 2020

State of Hawaii	4,700
C&C of Oahu	2,947
Hawaii County	660
Maui County	695
Kauai County	304
Agent (filed in Hawaii against another state)	94

News Highlights

November 12, 2020

Honolulu Star Advertiser: [State found just 18 COVID-19 positives so far out of more than 15,000 tests of travelers](#)

KHON2: [Ticketmaster looks to offer option requiring vaccination or negative COVID-19 test for access to events](#)

Pacific Business News: [CVS/Longs Pharmacy to open 9 new curbside Covid-19 test sites](#)

Pacific Business News: [Pop-Up Makeke gives small businesses visibility, survival skills](#)

The Garden Island: [One new travel related case reported](#)

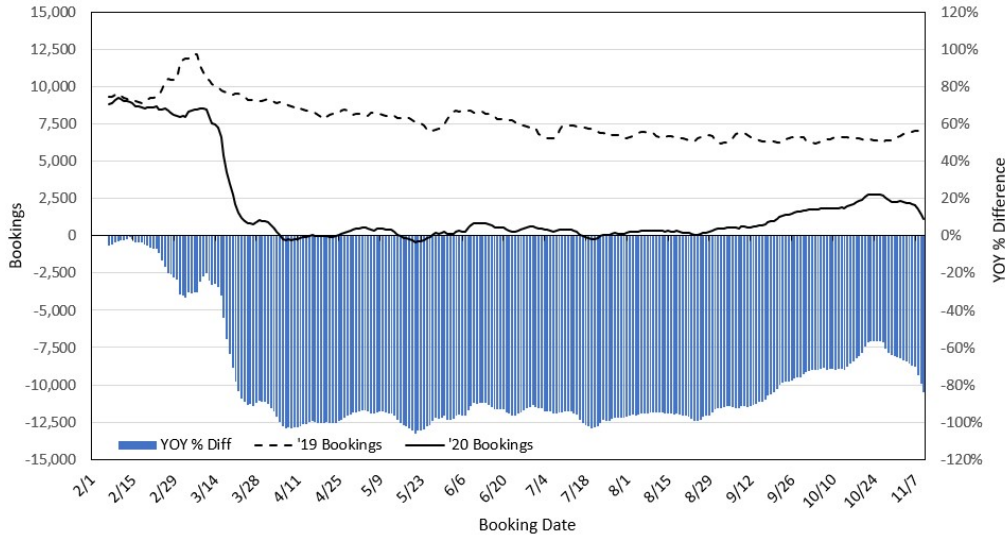
The Maui News: [Council urges mayor to create COVID-19 task force](#)

San Francisco Chronicle: [California joins most of U.S. in 'uncontrolled' coronavirus spread](#)

Travel + Leisure: [Travelers Are Buying Fake COVID-19 Test Results on the Black Market](#)

KCRA3: [Hawaii open? Technically yes, but don't expect much](#)

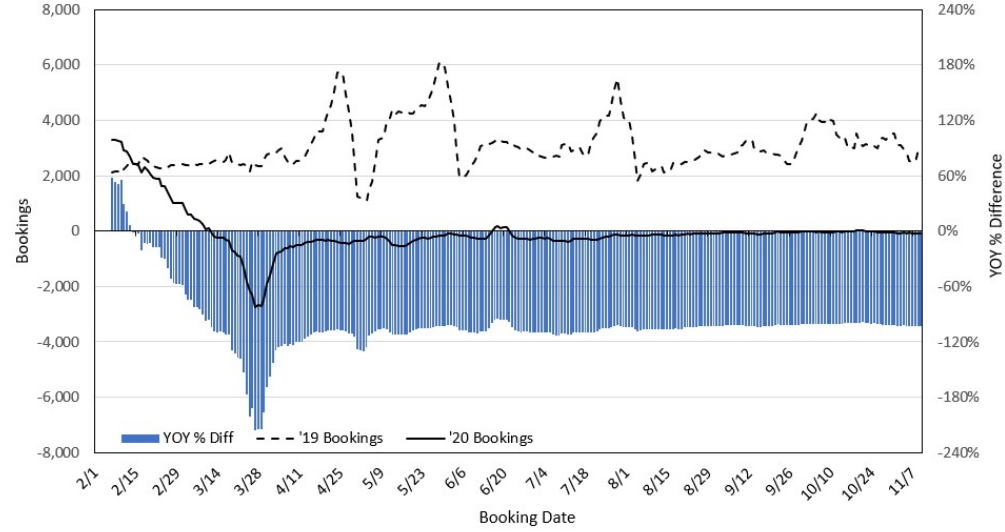
Travel Agency Bookings to Hawaii for Future Arrivals*
Based on a 7-day Moving Average, 2020 vs 2019
U.S.



*Future Arrivals refers to all arrivals that are 'future' relative to the referenced booking date.
 Source: Global Agency Pro

Update: Nov 10, 2020

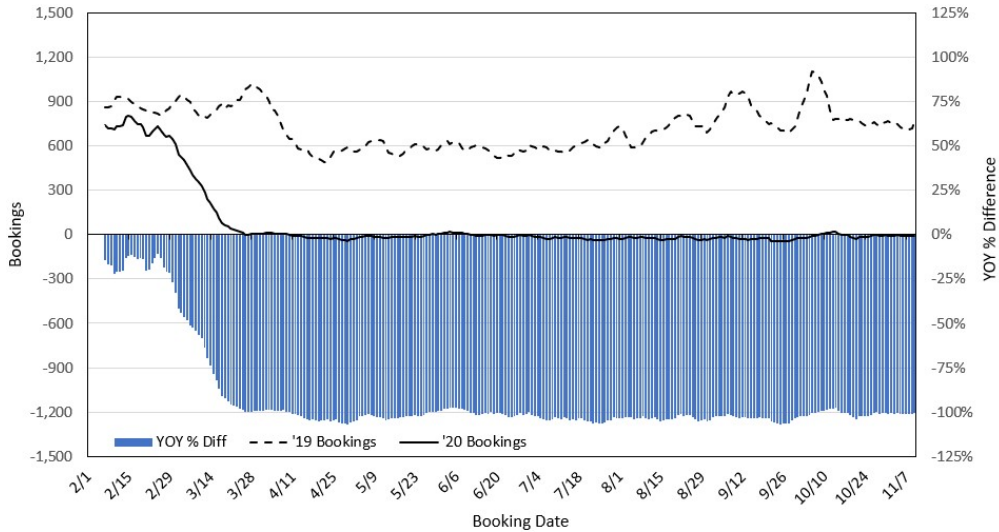
Travel Agency Bookings to Hawaii for Future Arrivals*
Based on a 7-day Moving Average, 2020 vs 2019
Japan



*Future Arrivals refers to all arrivals that are 'future' relative to the referenced booking date.
 Source: Global Agency Pro

Update: Nov 10, 2020

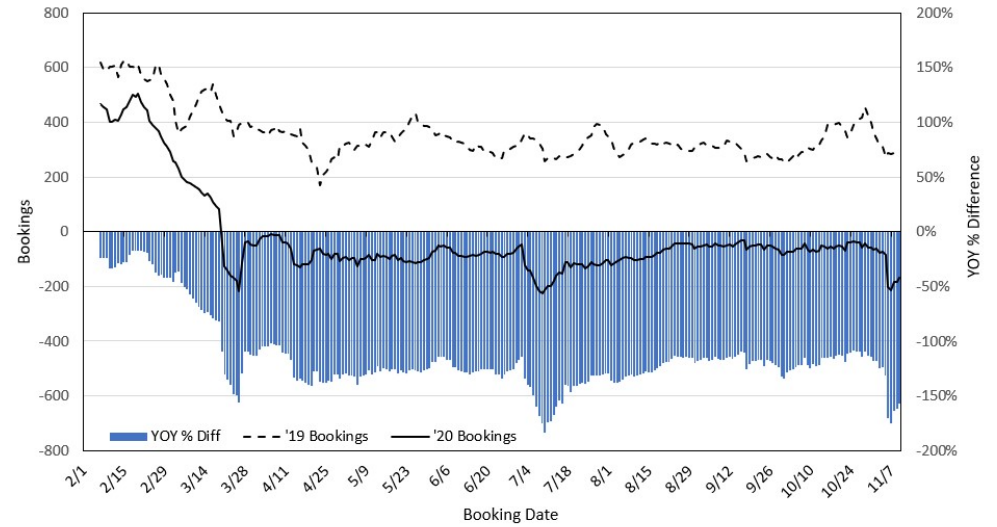
Travel Agency Bookings to Hawaii for Future Arrivals*
Based on a 7-day Moving Average, 2020 vs 2019
Canada



*Future Arrivals refers to all arrivals that are 'future' relative to the referenced booking date.
 Source: Global Agency Pro

Update: Nov 10, 2020

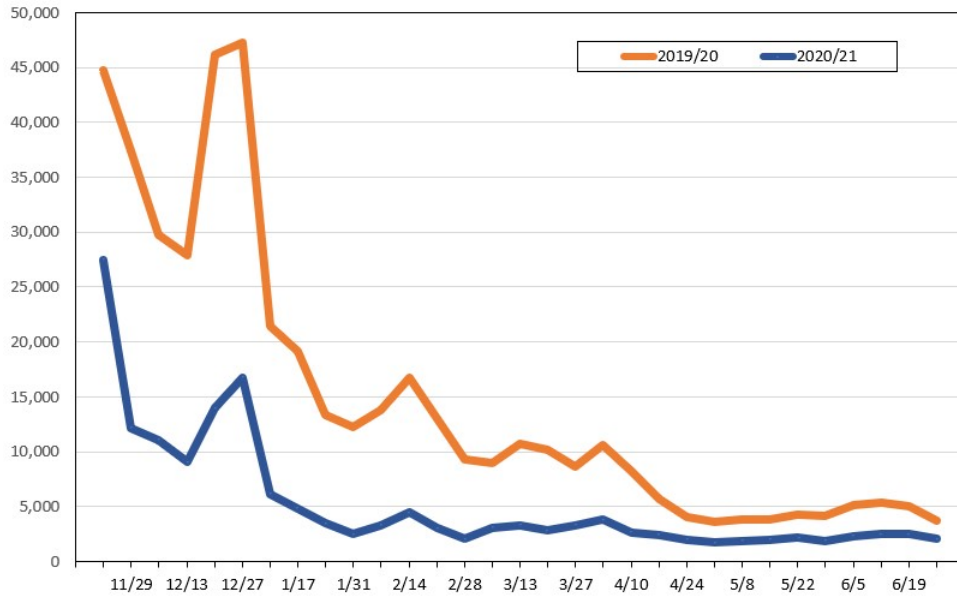
Travel Agency Bookings to Hawaii for Future Arrivals*
Based on a 7-day Moving Average, 2020 vs 2019
Australia



*Future Arrivals refers to all arrivals that are 'future' relative to the referenced booking date.
 Source: Global Agency Pro

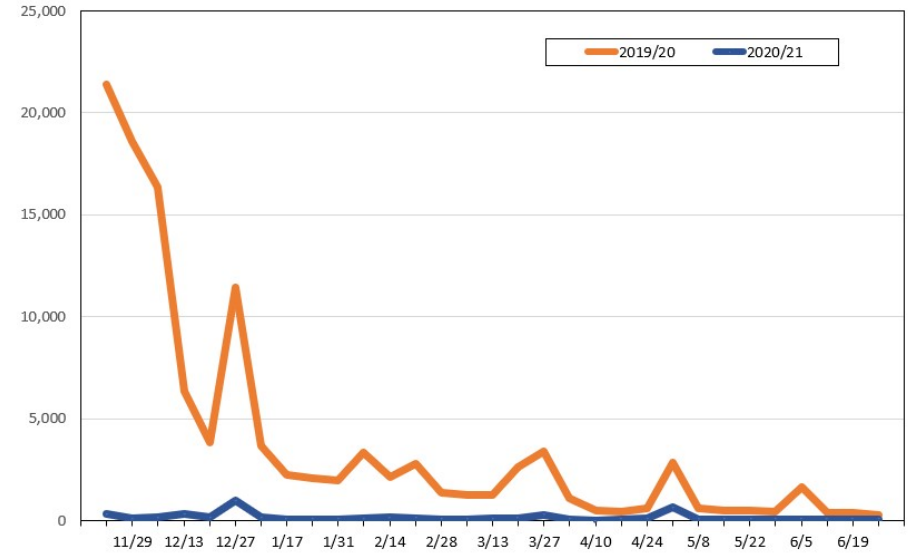
Update: Nov 10, 2020

Travel Agency Weekly Bookings for Future Travel to Hawai'i as of November 10, 2020
U.S.



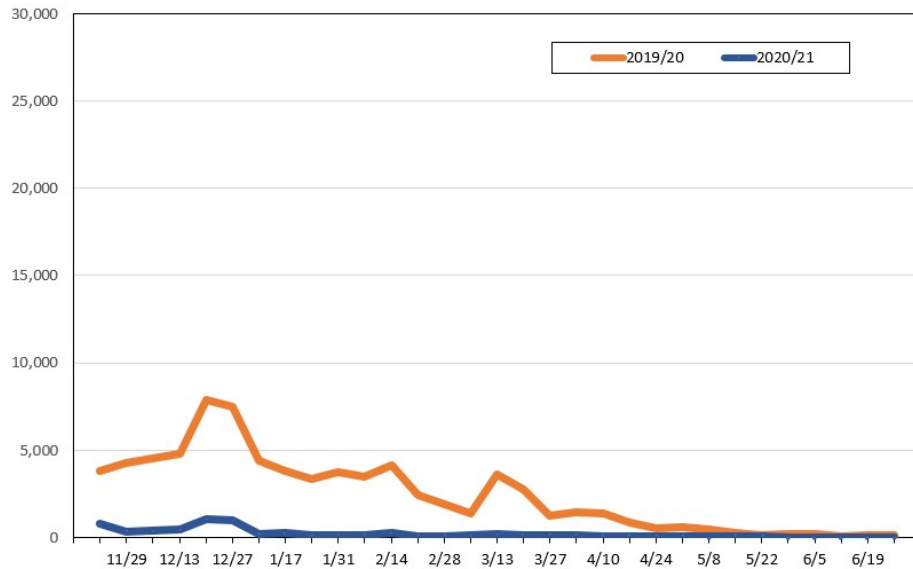
Source: Global Agency Pro, as of November 10, 2020

Travel Agency Weekly Bookings for Future Travel to Hawai'i as of November 10, 2020
Japan



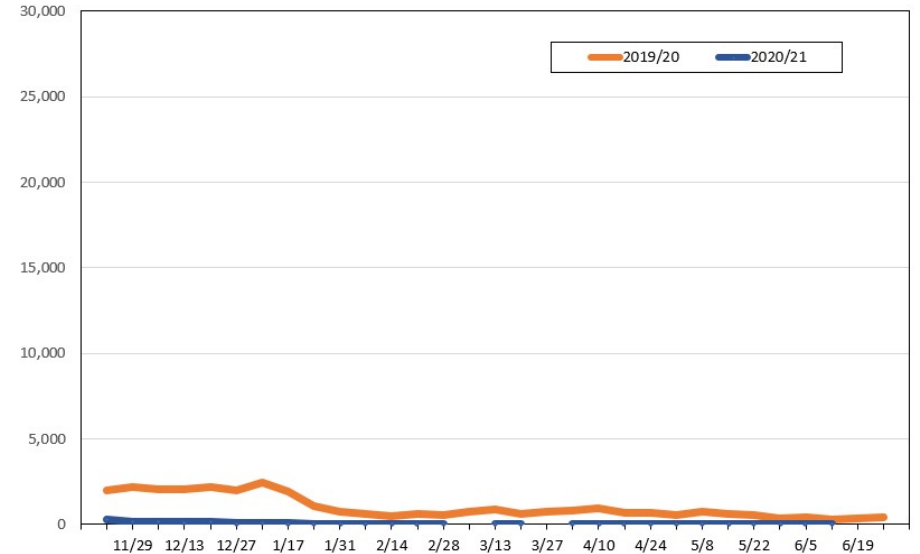
Source: Global Agency Pro, as of November 10, 2020

Travel Agency Weekly Bookings for Future Travel to Hawai'i as of November 10, 2020
Canada



Source: Global Agency Pro, as of November 10, 2020

Travel Agency Weekly Bookings for Future Travel to Hawai'i as of November 10, 2020
Australia



Source: Global Agency Pro, as of November 10, 2020