

HTA COVID-19 UPDATE

(Issued: 11/20/20 @ 4:30pm)

Reason for Trip by Arrival Airport - Transpacific Screened Passengers as of 11/19/20	Honolulu (HNL)	Kahului (OGG)	Kona (KOA)	Lihue (LIH)	Grand Total
Airline Crew	403	149	77	58	687
Connecting Flight (Transit)	299	1	2	0	302
Corporate Meeting	3	0	0	3	6
Essential Worker	51	13	13	6	83
Honeymoon	5	4	2	3	14
Incentive Trip	9	1	2	0	12
Intended Resident	88	14	26	4	132
Military or Federal Government	129	0	1	0	130
Other	63	21	5	4	93
Other Business	69	31	14	13	127
Pleasure/Vacation	2,040	1,898	794	769	5,501
Returning Resident	774	151	82	40	1,047
Sports Event	4	0	0	0	4
To Attend School	2	0	0	0	2
To Get Married	0	3	2	0	5
Transit	98	0	0	0	98
Visiting Friends or Relatives	1,076	182	175	107	1,540
Grand Total	5,113	2,468	1,195	1,007	9,783

Source: Safe Travels program developed by the State of Hawaii Office of Enterprise Technology Services

Note: The data is preliminary and subject to change

Market Impact Update: <https://www.dropbox.com/11/20/20 HTA COVID19 Update>

Novel Coronavirus in Hawaii

COVID-19 Positive Cases

Cumulative totals as of 12:00pm on November 20, 2020

Total Confirmed Cases	16,936* (95 new)
Hawaii	1,512
Kauai	87
Lanai	106
Maui	468†
Molokai	17
Oahu	14,576
Out of State	170
Pending	0
Required Hospitalization	1,234‡
Hawaii Deaths	224
Cases in the past 14 days	1,301**

Footnotes for COVID-19 Cases

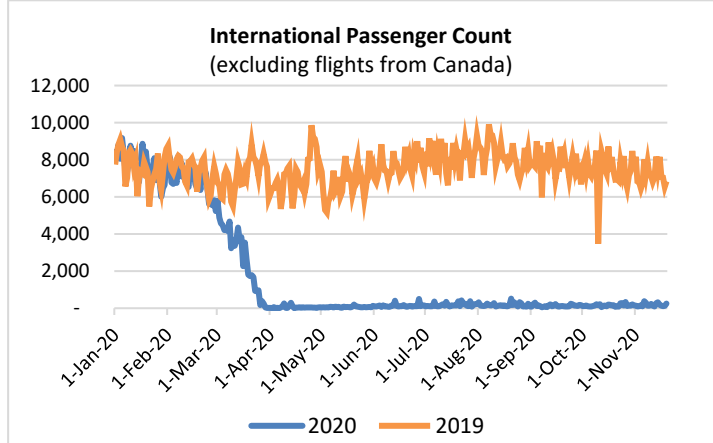
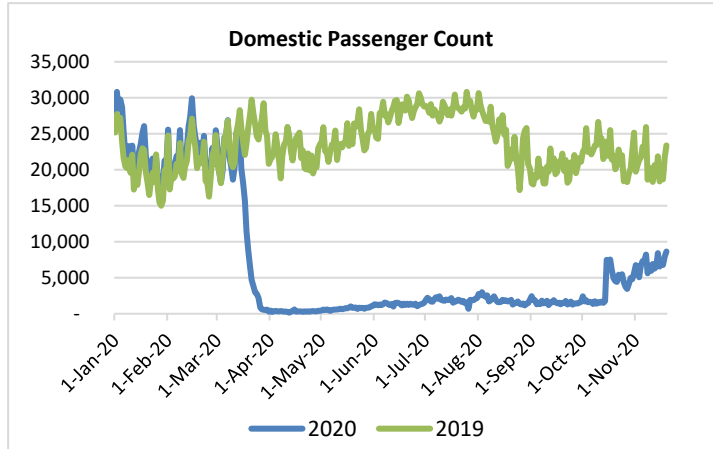
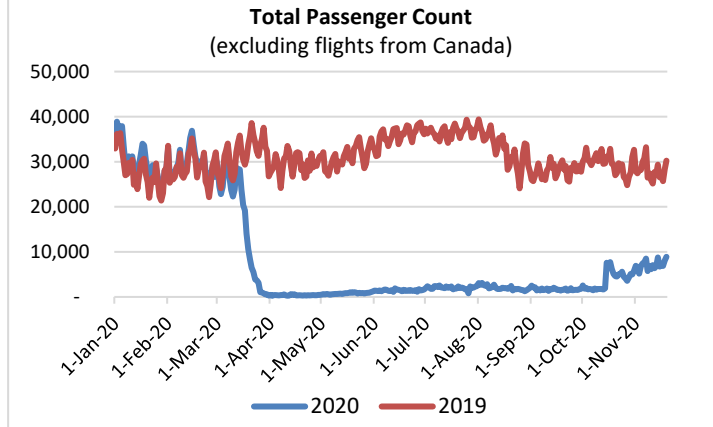
*As a result of updated information, one case on Oahu was recategorized to Hawaii, and another was recategorized to out-of-state.

**Using cases reported in the past 14 days provides a rough approximation of the number of cases currently meeting criteria for isolation. This proxy number for "active cases" resolves classification issues for cases unable to be reached or who are out of jurisdiction, for whom precise release from isolation date may not be possible to determine. It is also not influenced by lags in data entry. (This total does not include Hawaii residents diagnosed outside of Hawaii)

†One case is a Lanai resident whose exposure is on Maui Island and who will be remaining on Maui Island for the interim.

‡Includes Hawaii residents hospitalized out of state.

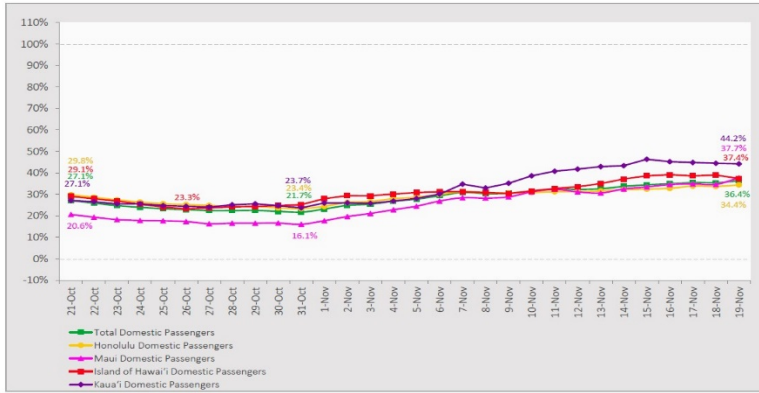
§Includes cases that meet isolation release criteria (Isolation should be maintained until at least 24 hours after resolution of fever and myalgia without the use of antipyretics OR at least 10 days have passed since symptom onset, whichever is longer). (The cases that have died and one case that has left the jurisdiction have been removed from these counts). Positive cases include confirmed cases, and Hawaii residents and non-residents; data are preliminary and subject to change. Note that CDC provides case counts according to states of residence.



Daily Passenger Count Table

11/19/2020	Domestic	International	Total
Oahu	4617	252	4869
Maui	2302		2302
Island of Hawaii	801		801
Kauai	934		934
State	8654	252	8906

7-Day Domestic by Island Moving Average Daily Passenger Volume
2020 Volume as Percentage of 2019 Volume
Through November 19, 2020



Source: HVCB analysis based on data from DBEDT
Note: Passenger volume figures include both visitors and residents.

Domestic by Island Month-to-Date and Year-to-Date Daily Passenger Volume
2020 Volume versus 2019 Volume
Through November 19, 2020

November 2020 (Month-to-Date through November 19)				
	2020	2019	Volume Change	Percent Change
Honolulu	71,718	222,000	-150,282	-67.7%
Maui County	32,243	100,769	-68,526	-68.0%
Island of Hawai'i	13,901	39,964	-26,063	-65.2%
Kaua'i	13,464	34,578	-21,114	-61.1%
Total	131,325	397,311	-265,986	-66.9%

2020 (Year-to-Date through November 19)				
	2020	2019	Volume Change	Percent Change
Honolulu	1,309,938	4,076,324	-2,766,386	-67.9%
Maui County	509,312	1,976,487	-1,467,175	-74.2%
Island of Hawai'i	254,291	861,672	-607,381	-70.5%
Kaua'i	173,929	675,200	-501,271	-74.2%
Total	2,247,469	7,589,683	-5,342,214	-70.4%

Source: HVCB analysis based on data from DBEDT
Note: Passenger volume figures include both visitors and residents. Total includes other international passengers. 2020 includes one additional day due to Leap Year (February 29th, 2020).

News Highlights

November 20, 2020

Honolulu Star Advertiser: [Mayor Kirk Caldwell urges travelers to use airport lab](#)

Hawaii News Now: [Citing COVID-19 concerns, activists try to block visitors from Big Island's Waipio Valley](#)

Hawaii News Now: [107 new COVID-19 cases reported in Hawaii](#)

Honolulu Civil Beat: [Here's Why The Health Department Says It Takes 36 Hours To Post COVID-19 Case Numbers](#)

The Garden Island: [Kawakami weighs in on new Safe Travels policy](#)

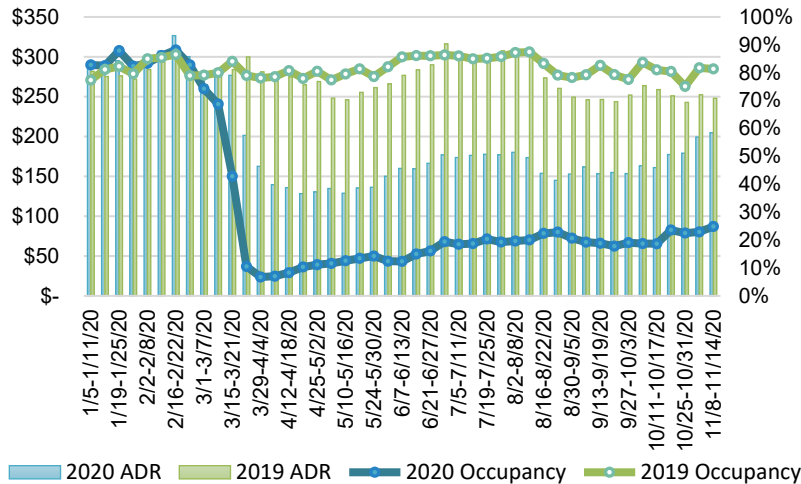
The Maui News: [Ige: Pre-travel testing program extends to Canada](#)

Maui Now: [Nearly \\$1 Million Headed To Hawaii To Increase COVID-19 Testing For Pacific Islander Communities](#)

Fox Business: [Hawaii imposes new COVID-19 travel restrictions](#)

Travel Weekly: [Hawaii makes mask wearing mandatory in all public spaces statewide](#)

State of Hawai'i Hotel Performance by Week - 2020 vs 2019



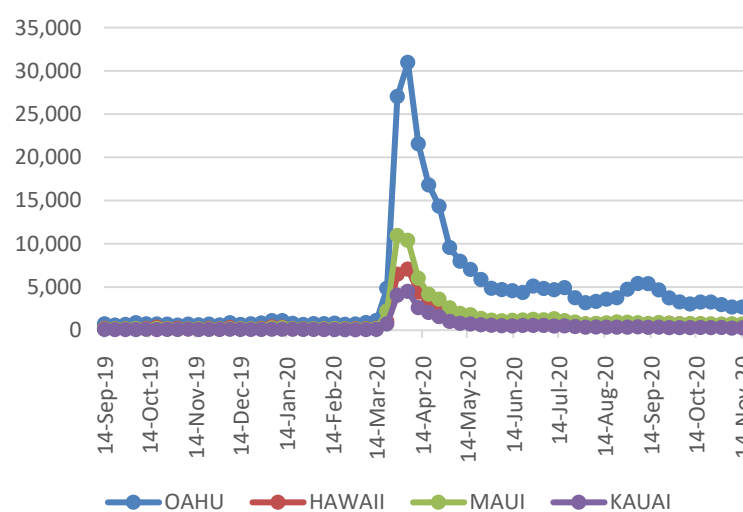
Source: STR, Inc. © Copyright 2020 Hawai'i Tourism Authority

Hawaii Hotel Performance Info:

For the week of November 8 – November 14, 2020

	Occupancy	ADR	RevPAR
State of Hawaii	24.9%	\$ 204.80	\$ 50.93
Oahu	24.0%	\$ 162.07	\$ 38.83
Maui County	21.2%	\$ 304.32	\$ 64.38
Kauai County	31.3%	\$ 208.83	\$ 65.31
Island of Hawaii	34.4%	\$ 191.24	\$ 65.82

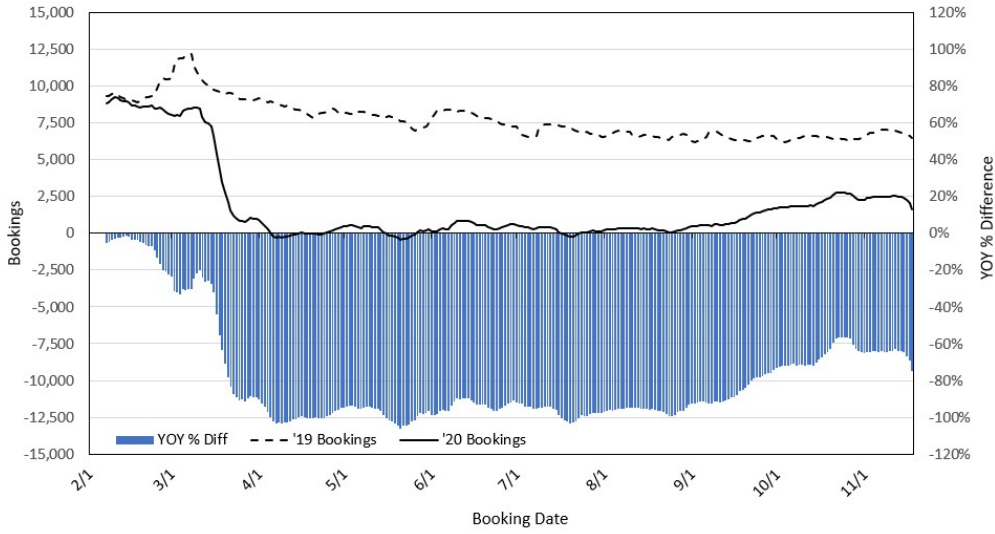
2020 Initial Weekly Unemployment Claims by Island



Weekly Unemployment Initial Claims: November 14, 2020

State of Hawaii	4,343
C&C of Oahu	2,669
Hawaii County	599
Maui County	713
Kauai County	259
Agent (filed in Hawaii against another state)	103

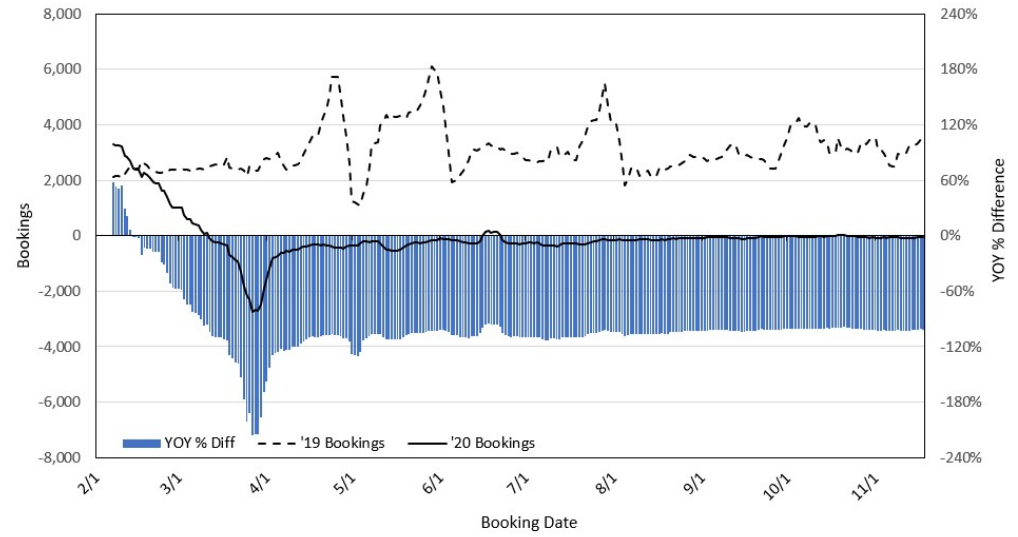
**Travel Agency Bookings to Hawaii for Future Arrivals*
Based on a 7-day Moving Average, 2020 vs 2019
U.S.**



*Future Arrivals refers to all arrivals that are 'future' relative to the referenced booking date.
Source: Global Agency Pro

Update: Nov 18, 2020

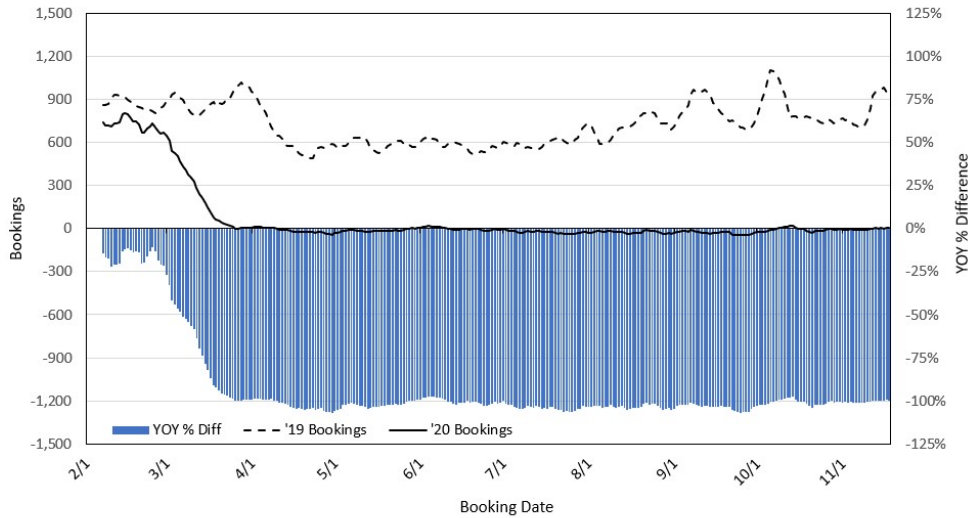
**Travel Agency Bookings to Hawaii for Future Arrivals*
Based on a 7-day Moving Average, 2020 vs 2019
Japan**



*Future Arrivals refers to all arrivals that are 'future' relative to the referenced booking date.
Source: Global Agency Pro

Update: Nov 18, 2020

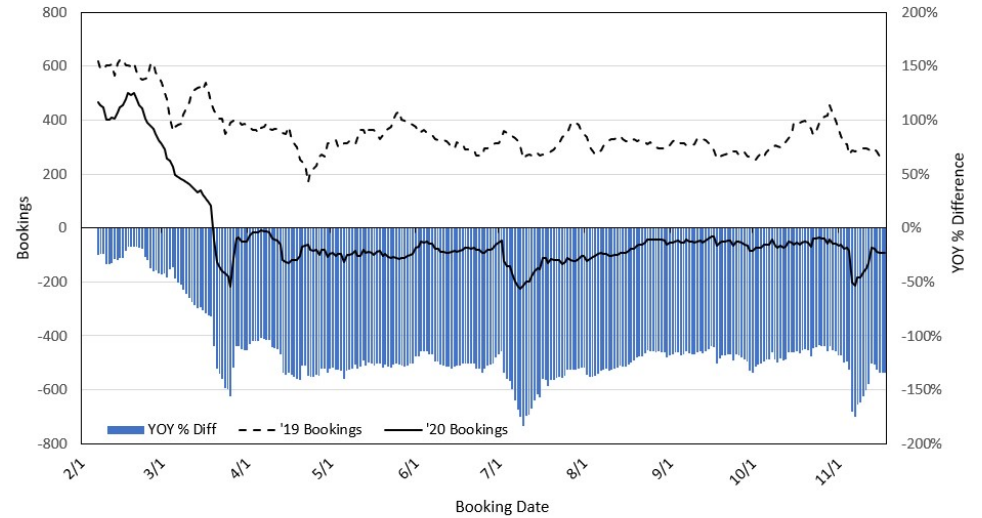
**Travel Agency Bookings to Hawaii for Future Arrivals*
Based on a 7-day Moving Average, 2020 vs 2019
Canada**



*Future Arrivals refers to all arrivals that are 'future' relative to the referenced booking date.
Source: Global Agency Pro

Update: Nov 18, 2020

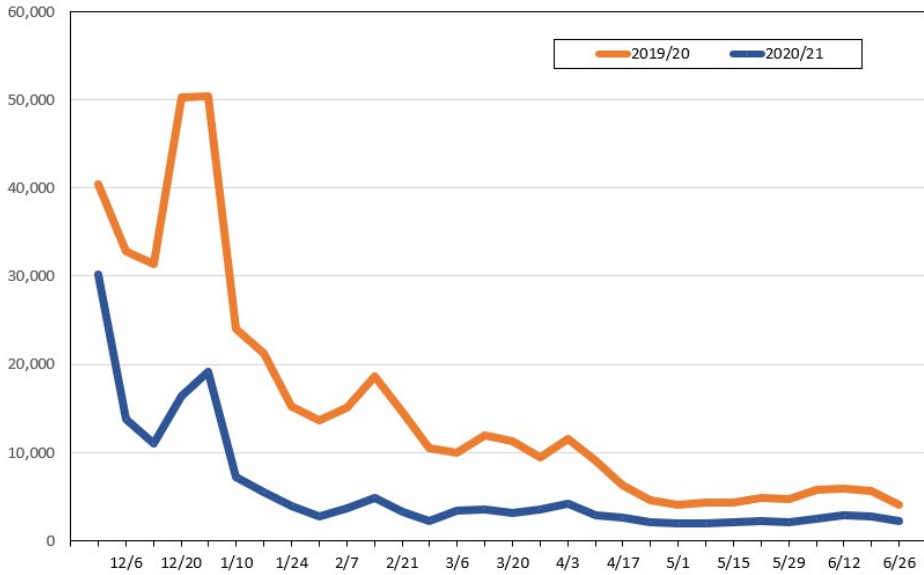
**Travel Agency Bookings to Hawaii for Future Arrivals*
Based on a 7-day Moving Average, 2020 vs 2019
Australia**



*Future Arrivals refers to all arrivals that are 'future' relative to the referenced booking date.
Source: Global Agency Pro

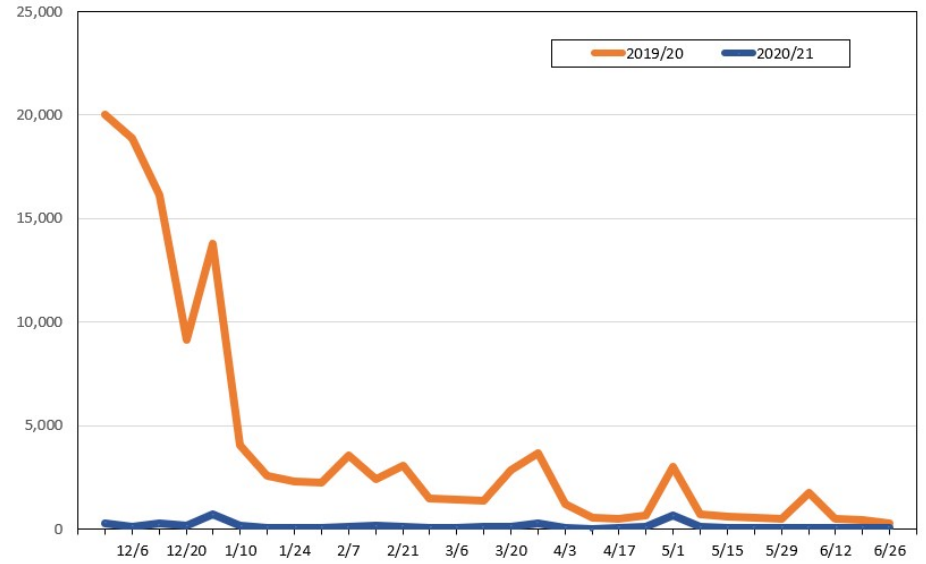
Update: Nov 18, 2020

Travel Agency Weekly Bookings for Future Travel to Hawai'i as of November 18, 2020
U.S.



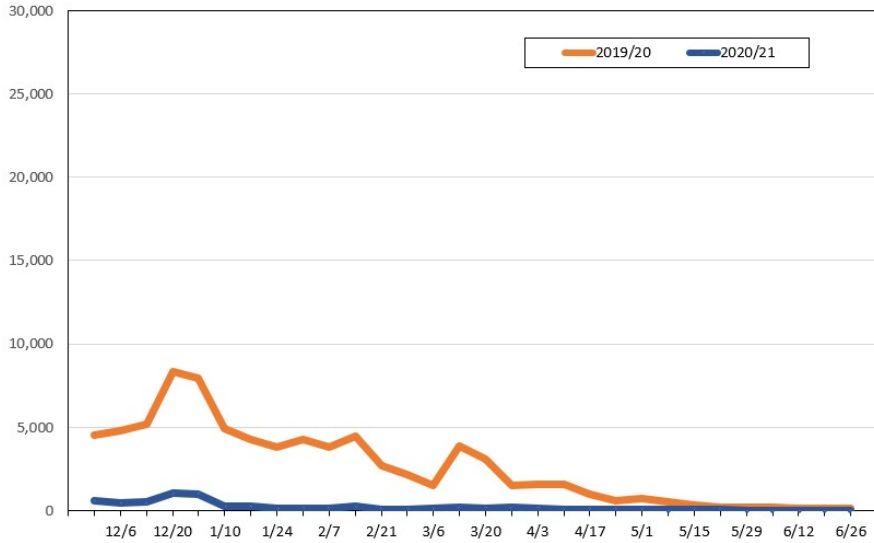
Source: Global Agency Pro, as of November 18, 2020

Travel Agency Weekly Bookings for Future Travel to Hawai'i as of November 18, 2020
Japan



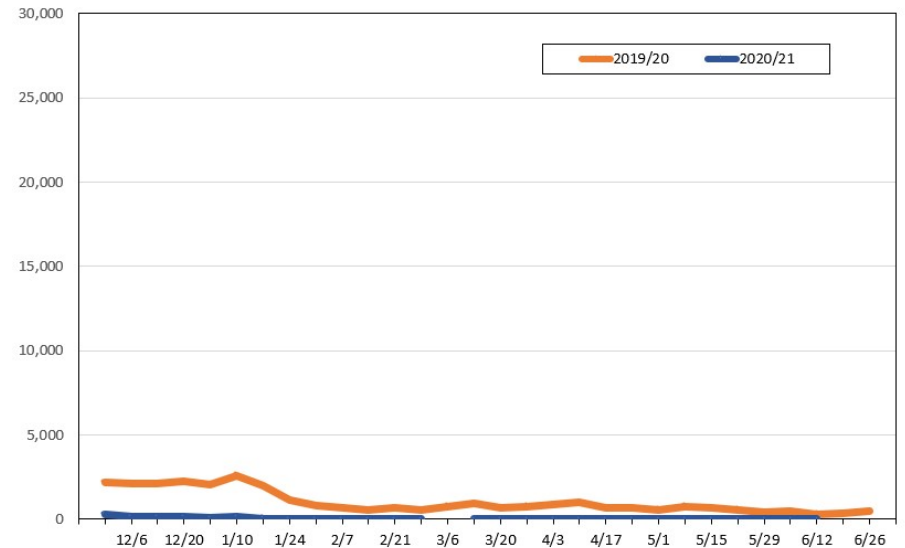
Source: Global Agency Pro, as of November 18, 2020

Travel Agency Weekly Bookings for Future Travel to Hawai'i as of November 18, 2020
Canada



Source: Global Agency Pro, as of November 18, 2020

Travel Agency Weekly Bookings for Future Travel to Hawai'i as of November 18, 2020
Australia



Source: Global Agency Pro, as of November 18, 2020