

HTA COVID-19 UPDATE

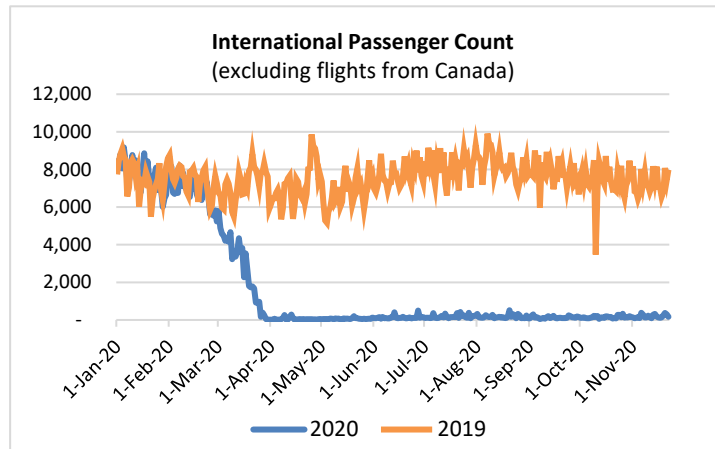
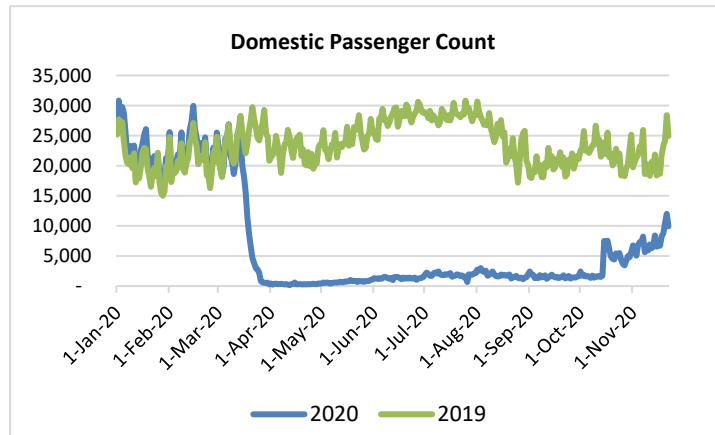
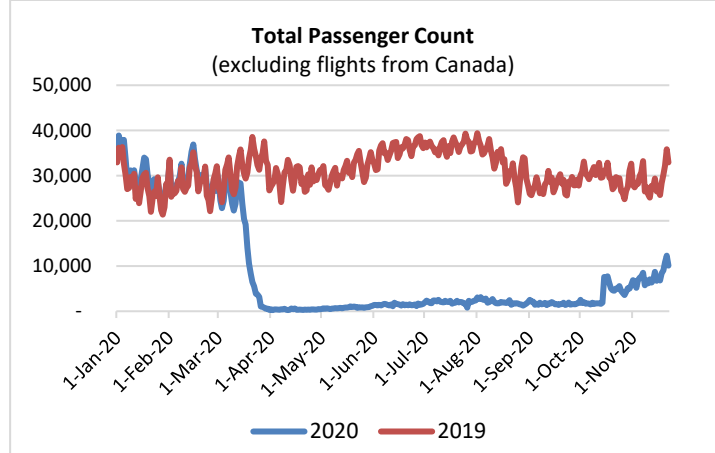
(Issued: 11/23/20 @ 4:30pm)

Reason for Trip by Arrival Airport - Transpacific Screened Passengers as of 11/22/20	Honolulu (HNL)	Kahului (OGG)	Kona (KOA)	Lihue (LIH)	Grand Total
Airline Crew	414	187	82	80	763
Connecting Flight (Transit)	286	6	0	0	292
Corporate Meeting	6	0	0	0	6
Essential Worker	60	20	13	4	97
Honeymoon	8	7	4	0	19
Incentive Trip	1	0	0	0	1
Intended Resident	94	11	17	7	129
Military or Federal Government	123	5	0	1	129
Other	121	16	10	19	166
Other Business	98	28	14	10	150
Pleasure/Vacation	2,390	2,773	998	1,099	7,260
Returning Resident	731	98	73	33	935
Sports Event	3	0	0	0	3
To Attend School	6	0	0	0	6
To Get Married	6	3	3	0	12
Transit	68	0	0	1	69
Visiting Friends or Relatives	1,192	263	185	73	1,713
Grand Total	5,607	3,417	1,399	1,327	11,750

Source: Safe Travels program developed by the State of Hawaii Office of Enterprise Technology Services

Note: The data is preliminary and subject to change

Market Impact Update: <https://www.dropbox.com/11/23/20 HTA COVID19 Update>



Daily Passenger Count Table

11/22/2020	Domestic	International	Total
Oahu	4824	165	4989
Maui	2900		2900
Island of Hawaii	1208		1208
Kauai	988		988
State	9920	165	10085

Novel Coronavirus in Hawaii

COVID-19 Positive Cases

Cumulative totals as of 12:00pm on November 23, 2020

Total Confirmed Cases	17,333* (114 new)
Hawaii	1,551
Kauai	100
Lanai	106
Maui	495†
Molokai	17
Oahu	14,873
Out of State	191
Pending	0
Required Hospitalization	1,261‡
Hawaii Deaths	233
Cases in the past 14 days	1,314**

Footnotes for COVID-19 Cases

*As a result of updated information, one case on Oahu was removed from the counts.

**Using cases reported in the past 14 days provides a rough approximation of the number of cases currently meeting criteria for isolation. This proxy number for "active cases" resolves classification issues for cases unable to be reached or who are out of jurisdiction, for whom precise release from isolation date may not be possible to determine. It is also not influenced by lags in data entry. (This total does not include Hawaii residents diagnosed outside of Hawaii)

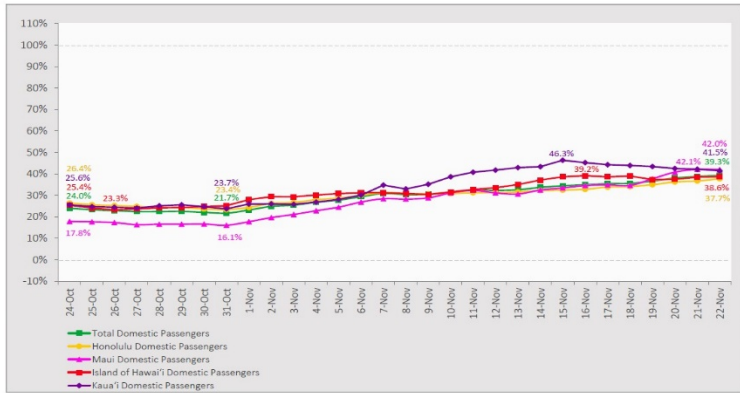
†One case is a Lanai resident whose exposure is on Maui Island and who will be remaining on Maui Island for the interim.

‡Includes Hawaii residents hospitalized out of state.

§Includes cases that meet isolation release criteria (Isolation should be maintained until at least 24 hours after resolution of fever and myalgia without the use of antipyretics OR at least 10 days have passed since symptom onset, whichever is longer). (The cases that have died and one case that has left the jurisdiction have been removed from these counts). Positive cases include confirmed cases, and Hawaii residents and non-residents; data are preliminary and subject to change. Note that CDC provides case counts according to states of residence.

7-Day Domestic by Island Moving Average Daily Passenger Volume

2020 Volume as Percentage of 2019 Volume
Through November 22, 2020



Source: HVCB analysis based on data from DBEDT
Note: Passenger volume figures include both visitors and residents.

Domestic by Island Month-to-Date and Year-to-Date Daily Passenger Volume

2020 Volume versus 2019 Volume
Through November 22, 2020

November 2020 (Month-to-Date through November 22)

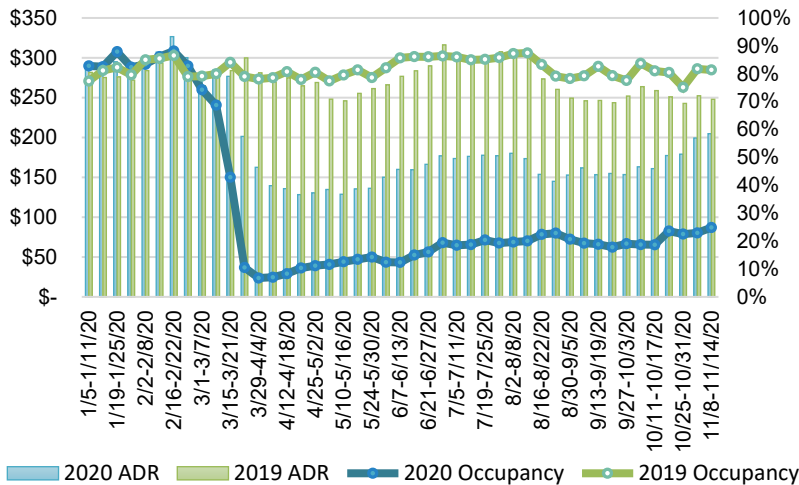
	2020	2019	Volume Change	Percent Change
Honolulu	87,645	259,333	-171,688	-66.2%
Maui County	41,926	118,250	-76,324	-64.5%
Island of Hawai'i	17,684	47,583	-29,899	-62.8%
Kauai	16,810	41,421	-24,611	-59.4%
Total	164,065	466,587	-302,522	-64.8%

2020 (Year-to-Date through November 22)

	2020	2019	Volume Change	Percent Change
Honolulu	1,325,865	4,113,657	-2,787,792	-67.8%
Maui County	518,995	1,993,968	-1,474,973	-74.0%
Island of Hawai'i	258,074	869,291	-611,217	-70.3%
Kauai	177,275	682,043	-504,768	-74.0%
Total	2,280,208	7,658,959	-5,378,751	-70.2%

Source: HVCB analysis based on data from DBEDT
Note: Passenger volume figures include both visitors and residents. Total includes other international passengers. 2020 includes one additional day due to Leap Year (February 29th, 2020).

State of Hawai'i Hotel Performance by Week - 2020 vs 2019



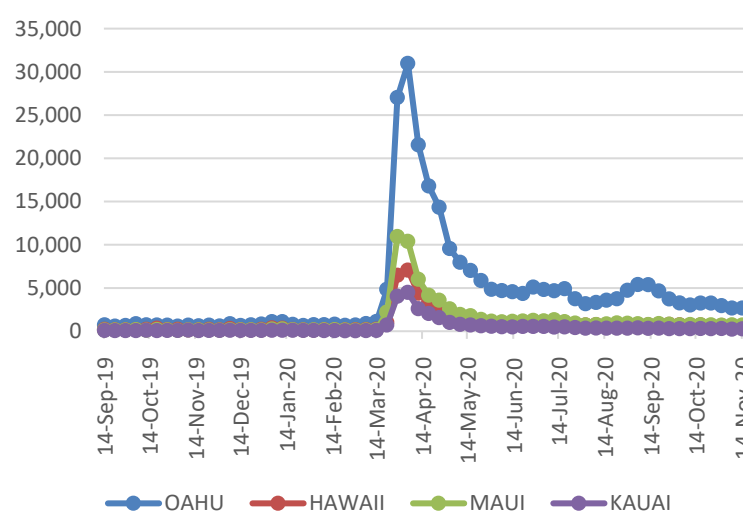
Source: STR, Inc. © Copyright 2020 Hawai'i Tourism Authority

Hawaii Hotel Performance Info:

For the week of November 8 – November 14, 2020

	Occupancy	ADR	RevPAR
State of Hawaii	24.9%	\$ 204.80	\$ 50.93
Oahu	24.0%	\$ 162.07	\$ 38.83
Maui County	21.2%	\$ 304.32	\$ 64.38
Kauai County	31.3%	\$ 208.83	\$ 65.31
Island of Hawaii	34.4%	\$ 191.24	\$ 65.82

2020 Initial Weekly Unemployment Claims by Island



Weekly Unemployment Initial Claims: November 14, 2020

State of Hawaii	4,343
C&C of Oahu	2,669
Hawaii County	599
Maui County	713
Kauai County	259
Agent (filed in Hawaii against another state)	103

News Highlights

November 23, 2020

Honolulu Star Advertiser: [Kauai wants stricter travel entry rules](#)

Honolulu Star Advertiser: [Rising COVID-19 cases on the mainland, new travel advisories likely to delay Hawaii's tourism recovery](#)

KHON2: [Hawaii could get first round of COVID vaccines in several weeks](#)

Hawaii News Now: [Concerned residents point to sparse mask wearing at tourism hotspots](#)

Hawaii Tribune-Herald: [Kim seeks expansion of post-arrival COVID screening at Kona airport](#)

Maui Now: [Law Enforcement Operation at "Little Beach" in Makena, Maui](#)

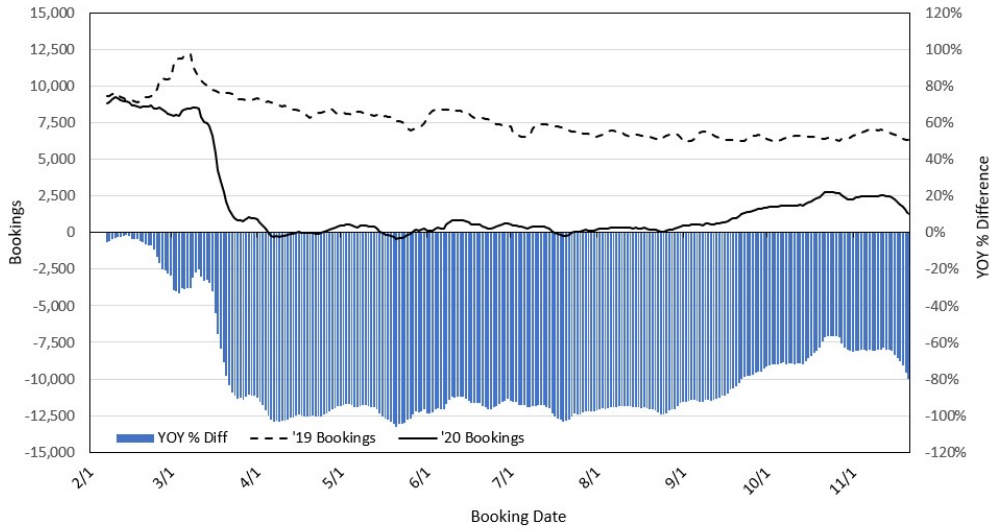
The Maui News: [Officials: Strict COVID measures in place for conference](#)

Newsweek: [Traveling for Thanksgiving? These States Let Travelers Skip Quarantine If They Have a Negative Test](#)

SF Gate: [Hawaii is tightening COVID-19 restrictions, from mask mandates to visitor testing](#)

TripSavvy: [A New Luxury Resort Opens on the Island of Hawaii](#)

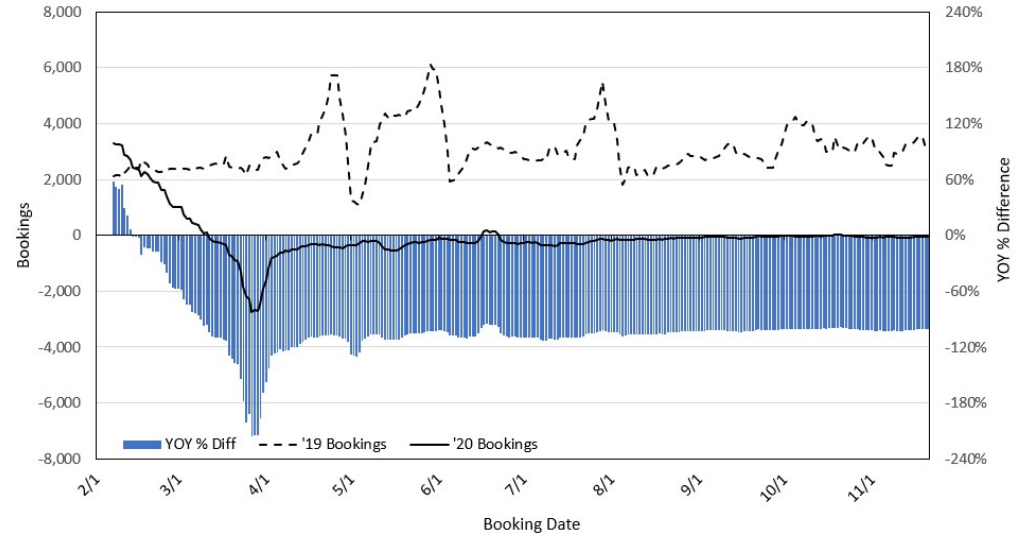
**Travel Agency Bookings to Hawaii for Future Arrivals*
Based on a 7-day Moving Average, 2020 vs 2019
U.S.**



*Future Arrivals refers to all arrivals that are 'future' relative to the referenced booking date.
Source: Global Agency Pro

Update: Nov 21, 2020

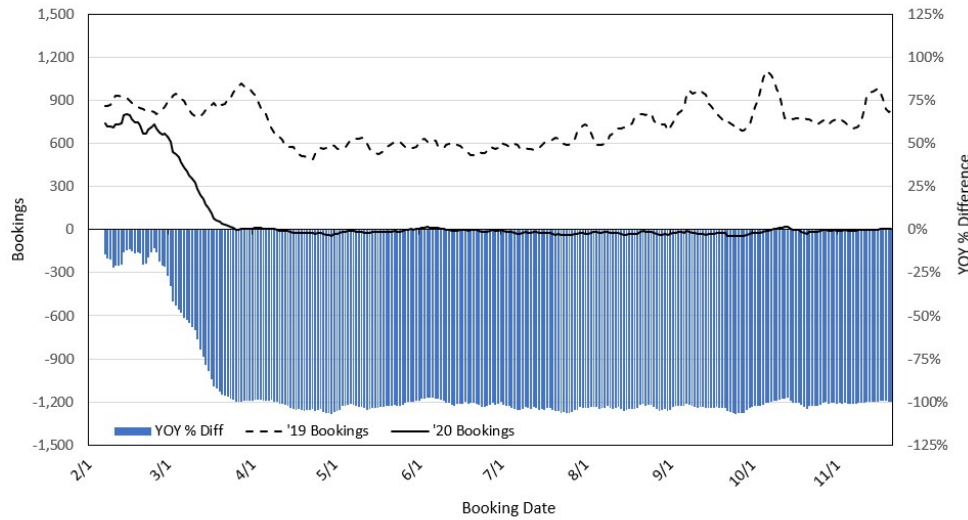
**Travel Agency Bookings to Hawaii for Future Arrivals*
Based on a 7-day Moving Average, 2020 vs 2019
Japan**



*Future Arrivals refers to all arrivals that are 'future' relative to the referenced booking date.
Source: Global Agency Pro

Update: Nov 21, 2020

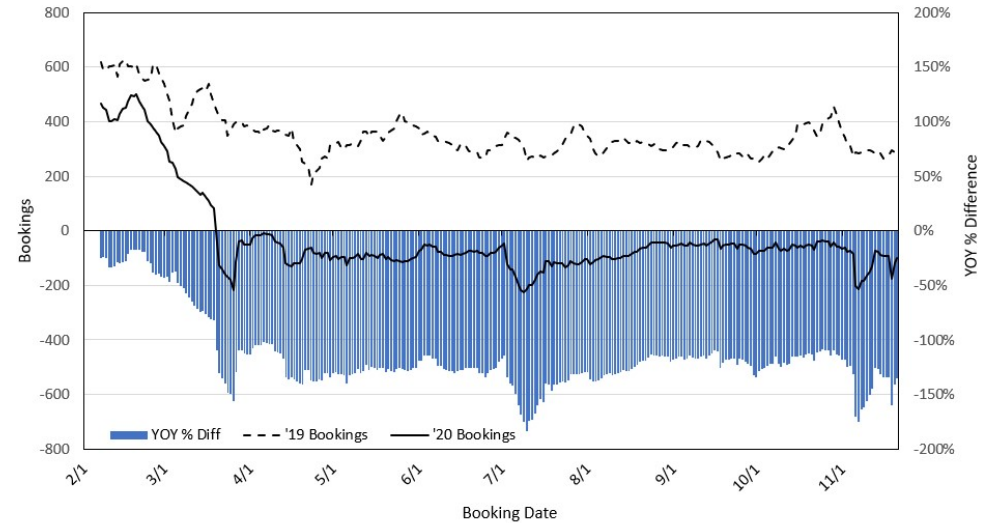
**Travel Agency Bookings to Hawaii for Future Arrivals*
Based on a 7-day Moving Average, 2020 vs 2019
Canada**



*Future Arrivals refers to all arrivals that are 'future' relative to the referenced booking date.
Source: Global Agency Pro

Update: Nov 21, 2020

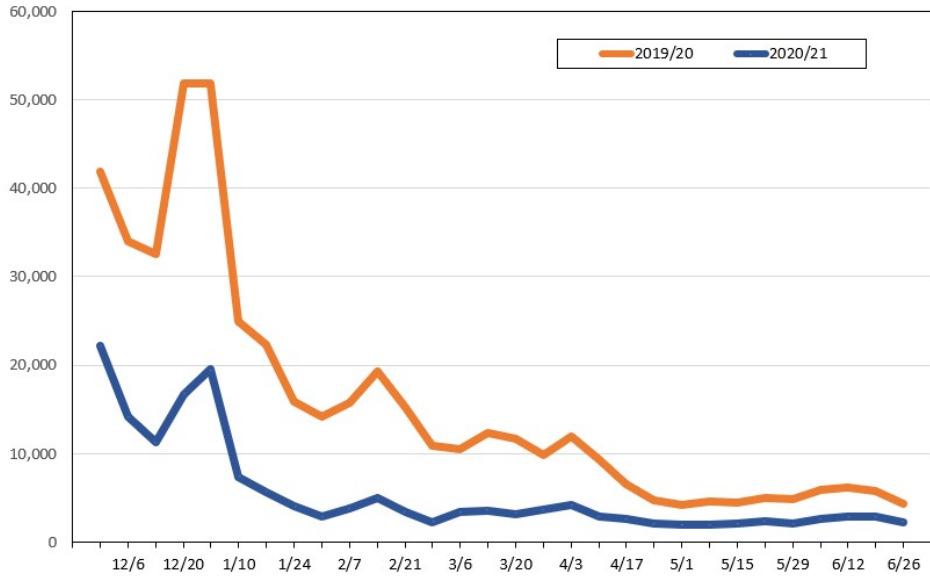
**Travel Agency Bookings to Hawaii for Future Arrivals*
Based on a 7-day Moving Average, 2020 vs 2019
Australia**



*Future Arrivals refers to all arrivals that are 'future' relative to the referenced booking date.
Source: Global Agency Pro

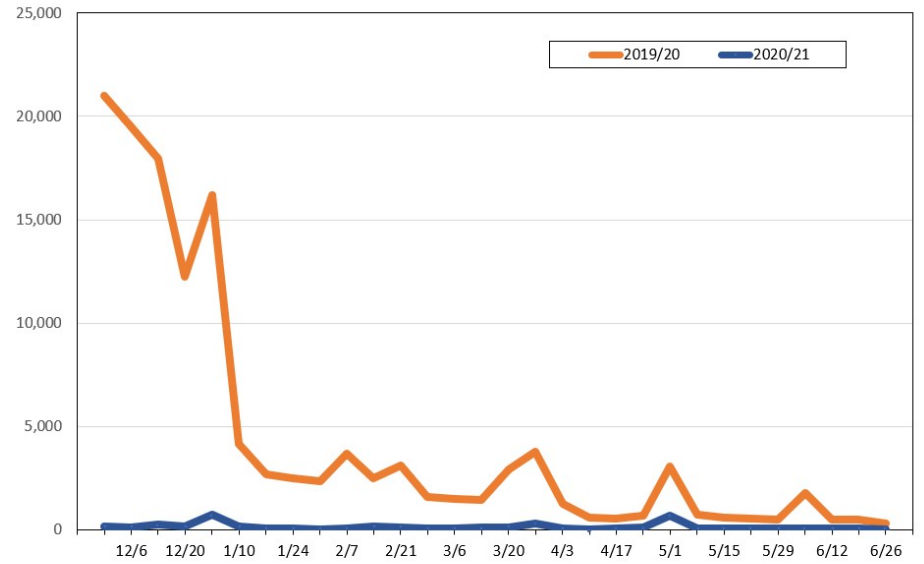
Update: Nov 21, 2020

Travel Agency Weekly Bookings for Future Travel to Hawai'i as of November 21, 2020
U.S.



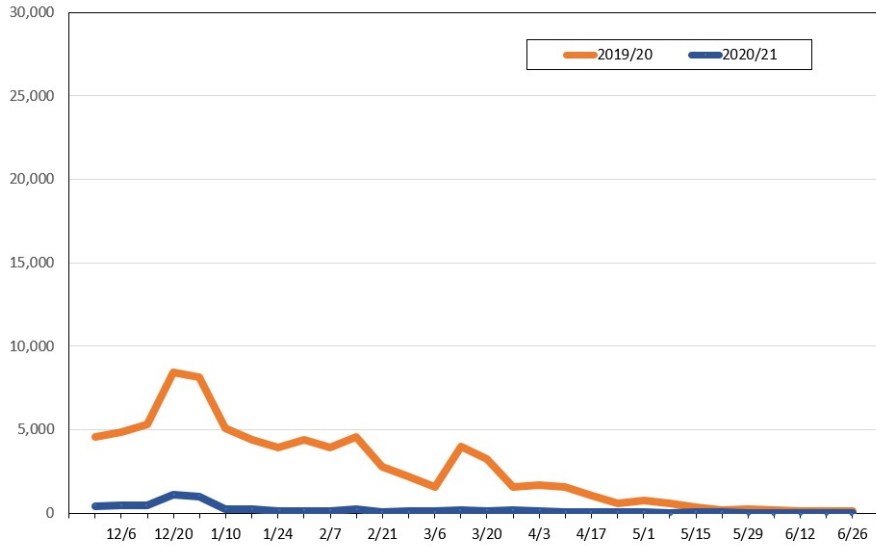
Source: Global Agency Pro, as of November 21, 2020

Travel Agency Weekly Bookings for Future Travel to Hawai'i as of November 21, 2020
Japan



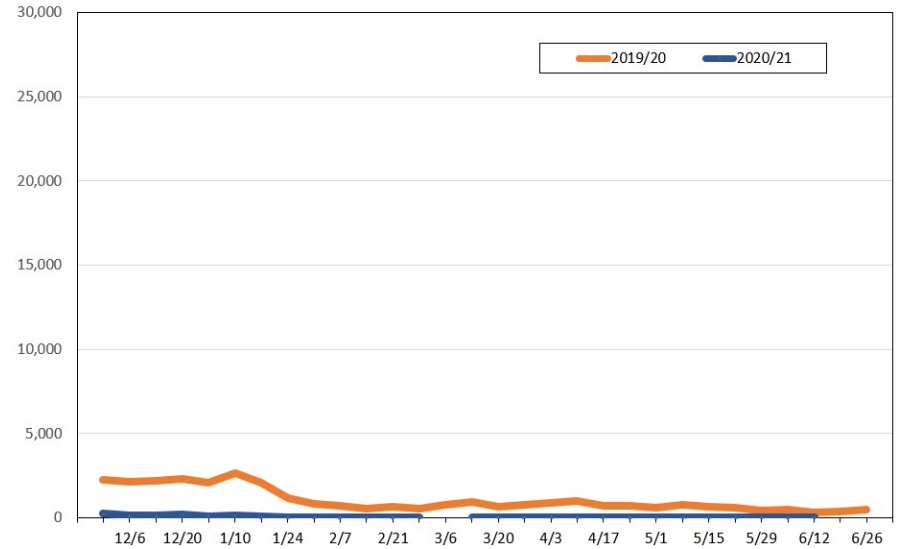
Source: Global Agency Pro, as of November 21, 2020

Travel Agency Weekly Bookings for Future Travel to Hawai'i as of November 21, 2020
Canada



Source: Global Agency Pro, as of November 21, 2020

Travel Agency Weekly Bookings for Future Travel to Hawai'i as of November 21, 2020
Australia



Source: Global Agency Pro, as of November 21, 2020