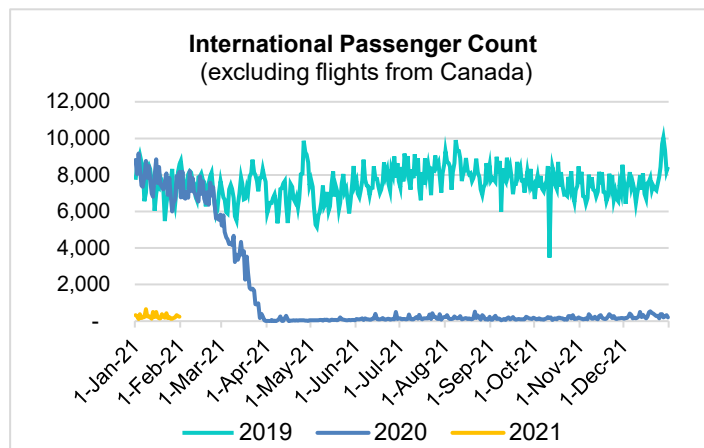
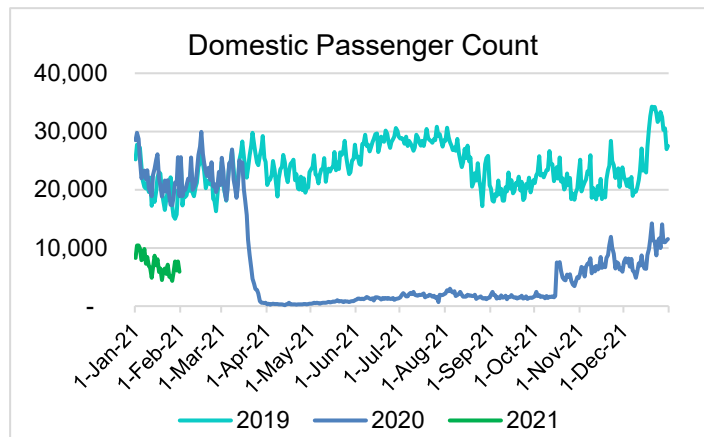
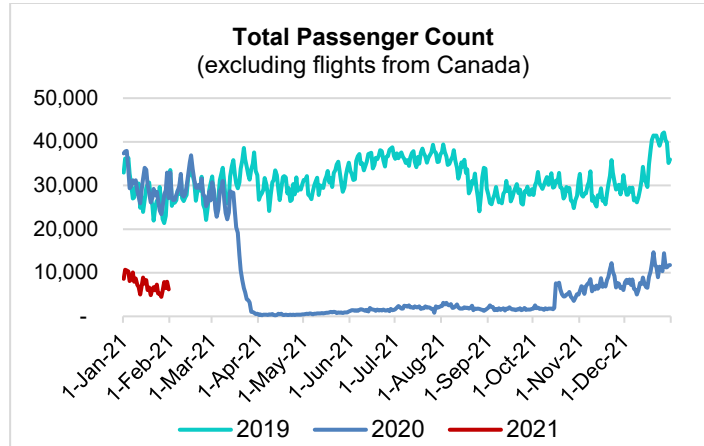


HTA COVID-19 UPDATE

(Issued: 2/1/21 @ 4:30pm)

Reason for Trip by Arrival Airport - Transpacific Screened Passengers as of 01/31/21	Honolulu (HNL)	Kahului (OGG)	Kona (KOA)	Lihue (LIH)	Grand Total
Airline Crew	412	171	87	6	676
Connecting Flight (Transit)	350	10	1	0	361
Corporate Meeting	8	1	1	0	10
Essential Worker	147	24	20	2	193
Honeymoon	7	9	2	2	20
Incentive Trip	1	4	1	0	6
Intended Resident	104	43	7	0	154
Military or Federal Government	102	1	1	1	105
Other	54	18	6	1	79
Other Business	83	17	12	0	112
Pleasure/Vacation	1,416	1,523	485	8	3,432
Returning Resident	931	110	97	17	1,155
Sports Event	0	0	17	0	17
To Attend School	24	1	1	0	26
To Get Married	1	2	0	0	3
Visiting Friends or Relatives	401	105	132	10	648
Grand Total	4,041	2,039	870	47	6,997

Source: Safe Travels program developed by the State of Hawaii Office of Enterprise Technology Services
Note: The data is preliminary and subject to change



Daily Passenger Count Table

01/31/2021	Domestic	International	Total
Oahu	3393	246	3639
Maui	1765		1765
Island of Hawaii	699		699
Kauai	39		39
State	5896	246	6142

Novel Coronavirus in Hawaii

COVID-19 Positive Cases

Cumulative totals as of 12:00pm on February 1, 2021

Total Confirmed Cases	25,943* (90 new)
Hawaii	2,169
Kauai	179
Lanai	107
Maui	1753†
Molokai	25
Oahu	20,980
Out of State	730
Pending	0
Required Hospitalization	1699‡
Hawaii Deaths	410
Cases in the past 14 days	1,382*

Footnotes for COVID-19 Cases

* As a result of updated information, one case from Maui was recategorized to out-of-state.

**Using cases reported in the past 14 days provides a rough approximation of the number of cases currently meeting criteria for isolation. This proxy number for "active cases" resolves classification issues for cases unable to be reached or who are out of jurisdiction, for whom precise release from isolation date may not be possible to determine. It is also not influenced by lags in data entry. (This total does not include Hawaii residents diagnosed outside of Hawaii)

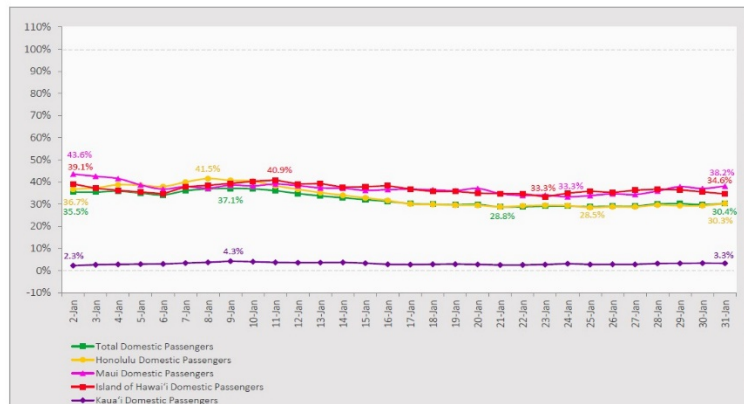
†One case is a Lanai resident whose exposure is on Maui Island and who will be remaining on Maui Island for the interim.

‡Includes Hawaii residents hospitalized out of state.

7-Day Domestic by Island Moving Average Daily Passenger Volume

2021 Volume as Percentage of 2020 Volume

Through January 31, 2021



Source: HVCB analysis based on data from DBEDT

Note: Passenger volume figures include both visitors and residents.

Domestic by Island Month-to-Date and Year-to-Date Daily Passenger Volume

2021 Volume versus 2020 Volume

Through January 31, 2021

January 2021 (Month-End)

	2021	2020	Volume Change	Percent Change
Honolulu	124,727	384,826	-260,099	-67.6%
Maui County	62,461	171,472	-109,011	-63.6%
Island of Hawai'i	29,921	83,864	-53,943	-64.3%
Kaua'i	1,838	58,131	-56,293	-96.8%
Total	218,947	698,293	-479,346	-68.6%

2021 (Year-to-Date through January 31)

	2021	2020	Volume Change	Percent Change
Honolulu	124,727	384,826	-260,099	-67.6%
Maui County	62,461	171,472	-109,011	-63.6%
Island of Hawai'i	29,921	83,864	-53,943	-64.3%
Kaua'i	1,838	58,131	-56,293	-96.8%
Total	218,947	698,293	-479,346	-68.6%

Source: HVCB analysis based on data from DBEDT

Note: Passenger volume figures include both visitors and residents. Total includes other international passengers.

News Highlights

February 1, 2021

Honolulu Star Advertiser:

[Hawaiian Airlines CEO Peter Ingram finds ways to keep planes flying as COVID-19 wreaks havoc on the travel industry](#)

Honolulu Star Advertiser: [Letters:](#)

[Hawaii Tourism Authority not needed to draw visitors here; Gambling would harm communities; Diversify economy with TMT project](#)

Honolulu Star Advertiser: [Letters:](#)

[Defund Hawaii Tourism Authority, use money to diversify economy; Trump must be held accountable for riot; Hawaii GOP must field better candidates](#)

Honolulu Civil Beat: [Green](#)

[Proposes New Plan For Reopening Hawaii As Vaccine Distribution Ramps Up](#)

Hawaii Tribune-Herald: [Officials](#)

[discuss various ways vaccinations are happening in Hawaii](#)

Travel Pulse: [Everything You Need](#)

[to Know About COVID-19 Testing at All-Inclusive Resorts](#)

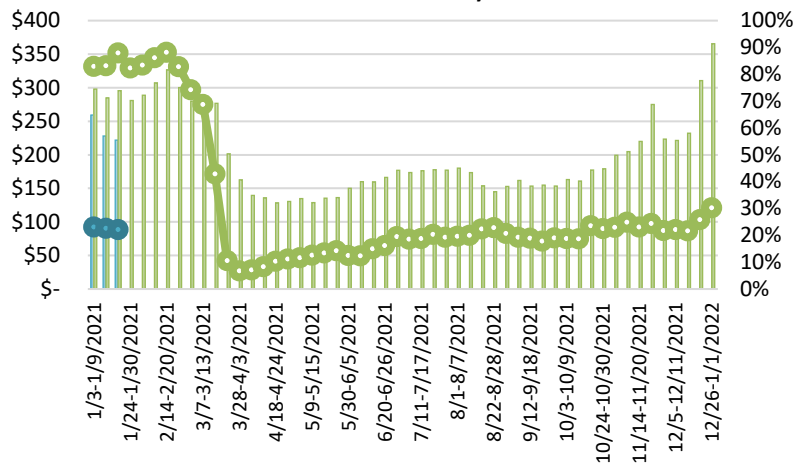
Travel Weekly: [TW survey:](#)

[Bookings stumble as Covid rules keep piling up](#)

Vancouver Sun: [COVID-19: Over](#)

[100 people flew from Vancouver to Hawaii on Friday and Saturday](#)

State of Hawai'i Hotel Performance by Week - 2021 vs 2020



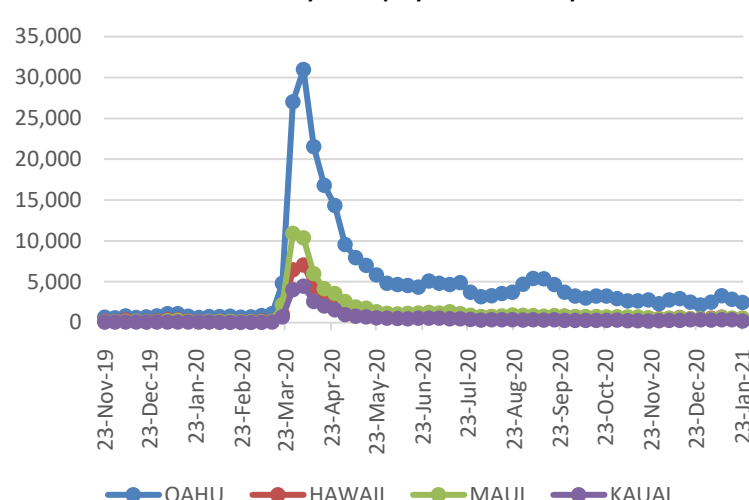
Source: STR, Inc. © Copyright 2021 Hawai'i Tourism Authority

Hawaii Hotel Performance Info:

For the week of January 17 – January 23, 2021

	Occupancy	ADR	RevPAR
State of Hawaii	22.1%	\$221.90	\$48.99
Oahu	21.7%	\$158.77	\$34.45
Maui County	20.1%	\$383.23	\$77.04
Kauai County	19.7%	\$165.50	\$32.54
Island of Hawaii	28.8%	\$222.52	\$64.16

2021 Initial Weekly Unemployment Claims by Island



Weekly Unemployment Initial Claims: January 23, 2021

State of Hawaii	3,927
C&C of Oahu	2,482
Hawaii County	499
Maui County	572
Kauai County	218
Agent (filed in Hawaii against another state)	156

Helpful Resources

Department of Health
<https://hawaiiicovid19.com/>

Department of Health

<https://health.hawaii.gov/docd/advisories/novel-coronavirus-2019>

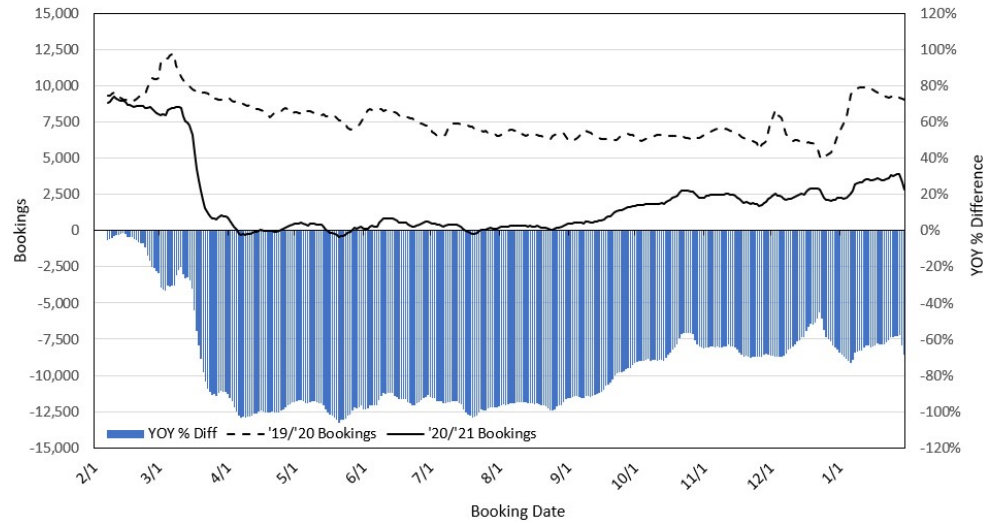
Dept. of Business, Economic Development & Tourism

<https://dbedt.hawaii.gov/economic/covid19/>

Department of Transportation

<https://hidot.hawaii.gov/coronavirus/>

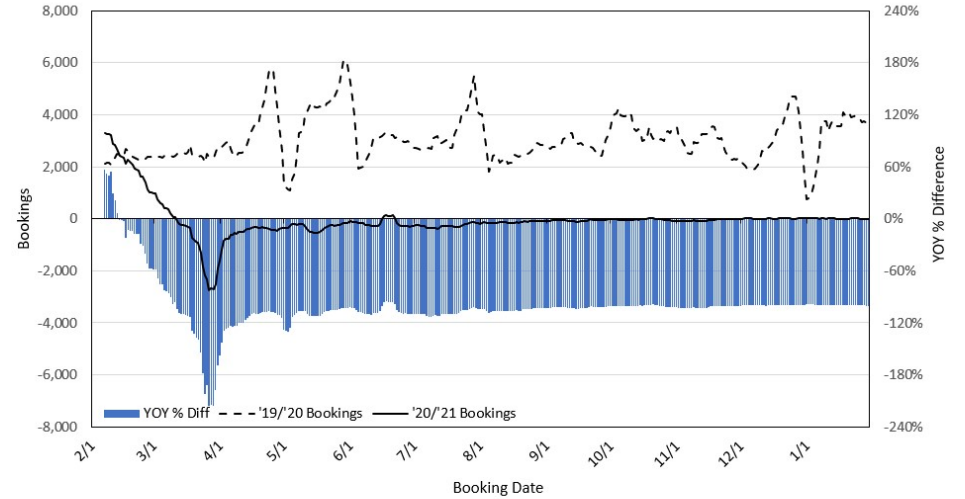
Travel Agency Bookings to Hawaii for Future Arrivals* Based on a 7-day Moving Average, as of January 30, 2021 U.S.



*Future Arrivals refers to all arrivals that are 'future' relative to the referenced booking date.
Source: Global Agency Pro

Update: Jan 30, 2021

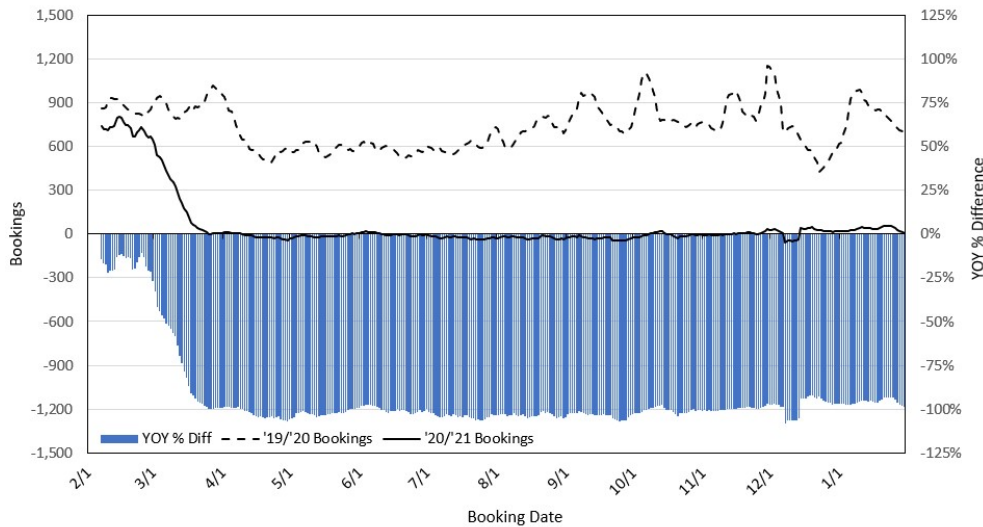
Travel Agency Bookings to Hawaii for Future Arrivals* Based on a 7-day Moving Average, as of January 30, 2021 Japan



*Future Arrivals refers to all arrivals that are 'future' relative to the referenced booking date.
Source: Global Agency Pro

Update: Jan 30, 2021

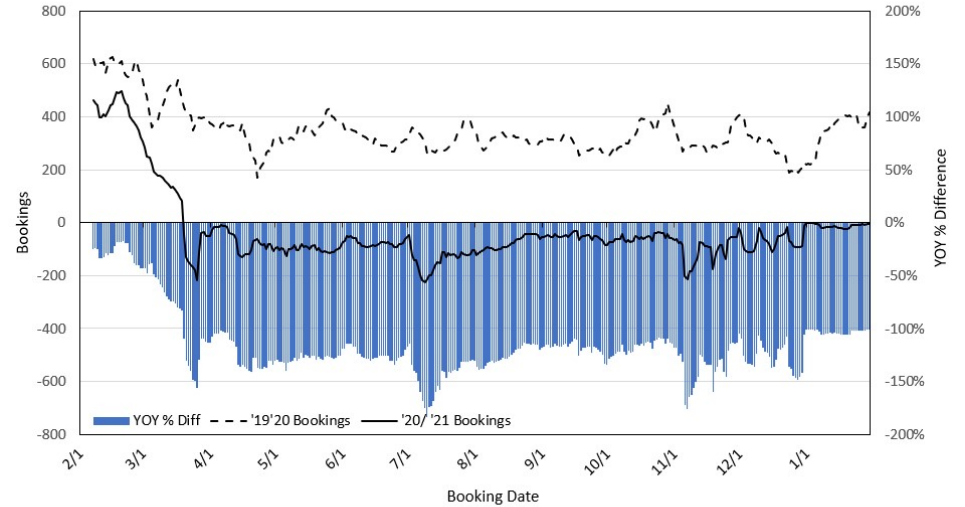
Travel Agency Bookings to Hawaii for Future Arrivals* Based on a 7-day Moving Average, as of January 30, 2021 Canada



*Future Arrivals refers to all arrivals that are 'future' relative to the referenced booking date.
Source: Global Agency Pro

Update: Jan 30, 2021

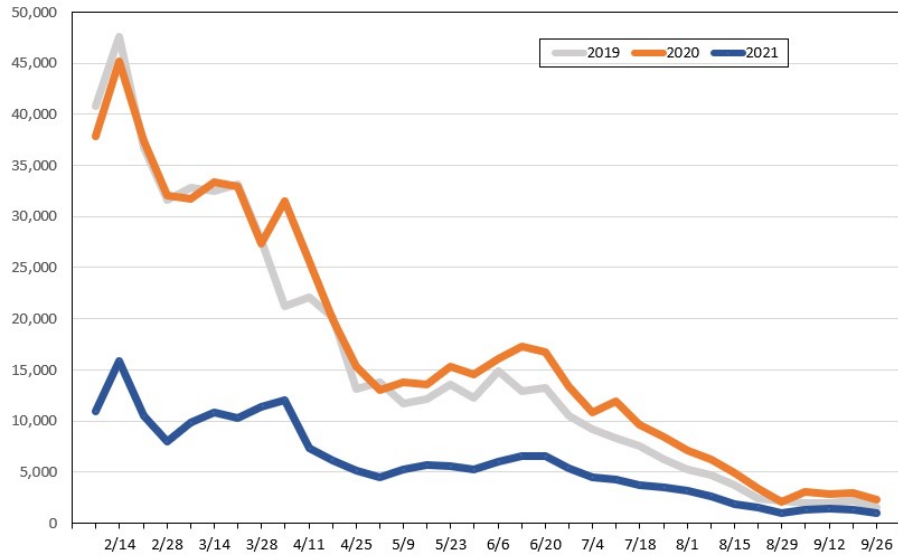
Travel Agency Bookings to Hawaii for Future Arrivals* Based on a 7-day Moving Average, as of January 30, 2021 Australia



*Future Arrivals refers to all arrivals that are 'future' relative to the referenced booking date.
Source: Global Agency Pro

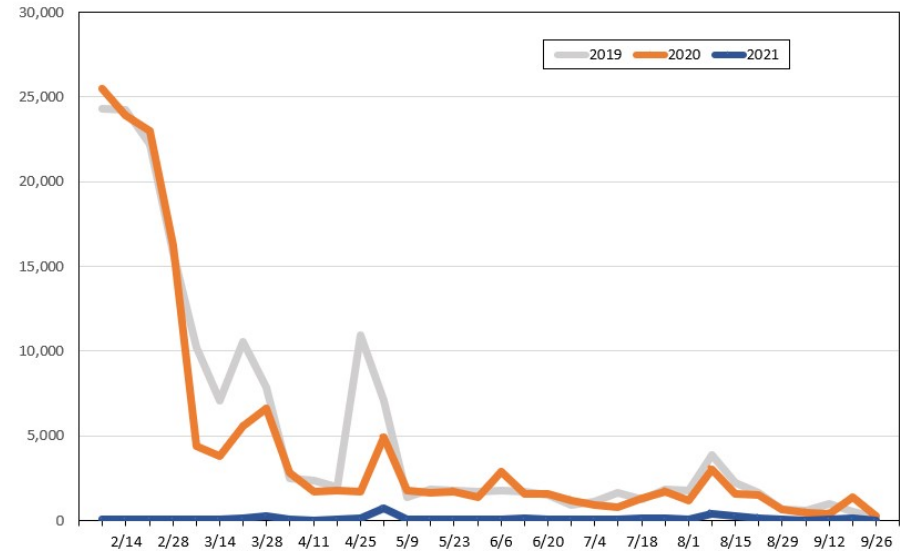
Update: Jan 30, 2021

Travel Agency Weekly Bookings for Future Travel to Hawai'i as of January 30, 2021
U.S.



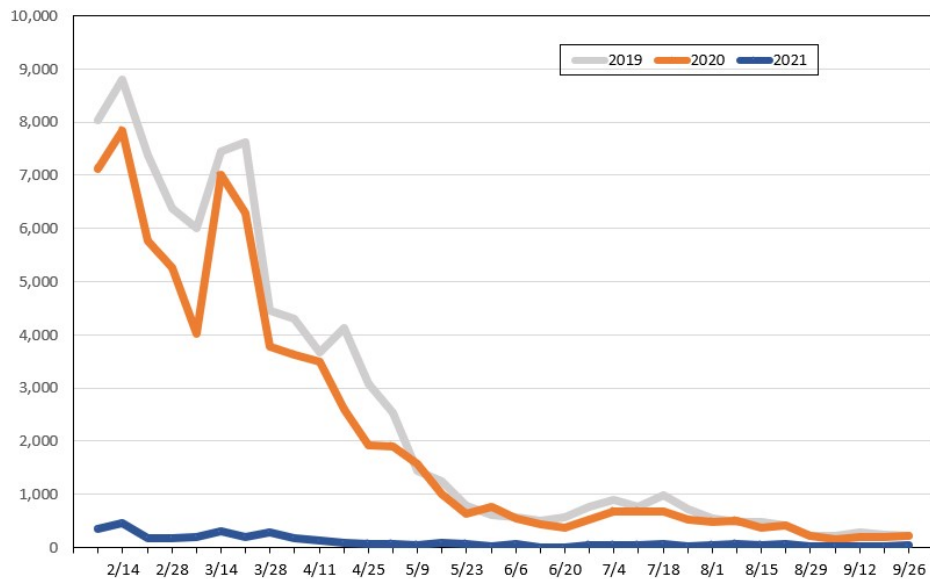
Source: Global Agency Pro, as of January 30, 2021

Travel Agency Weekly Bookings for Future Travel to Hawai'i as of January 30, 2021
Japan



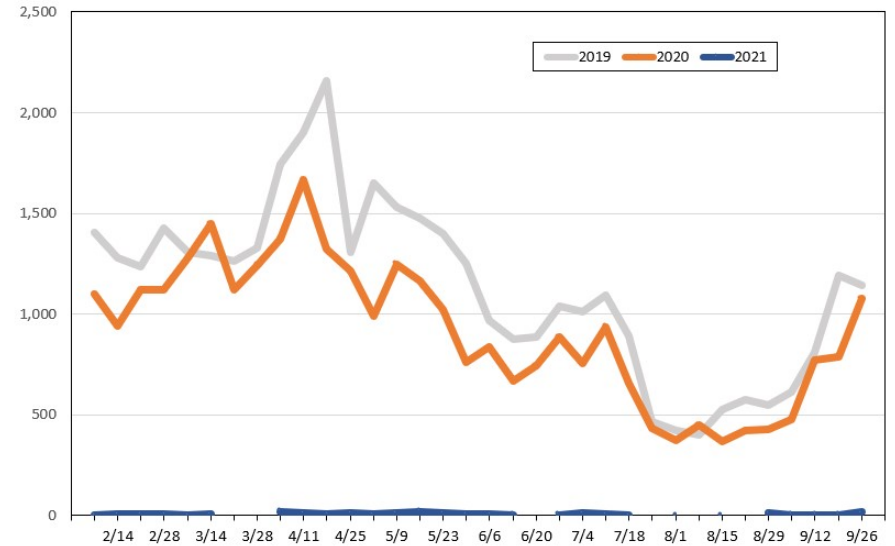
Source: Global Agency Pro, as of January 30, 2021

Travel Agency Weekly Bookings for Future Travel to Hawai'i as of January 30, 2021
Canada



Source: Global Agency Pro, as of January 30, 2021

Travel Agency Weekly Bookings for Future Travel to Hawai'i as of January 30, 2021
Australia



Source: Global Agency Pro, as of January 30, 2021