

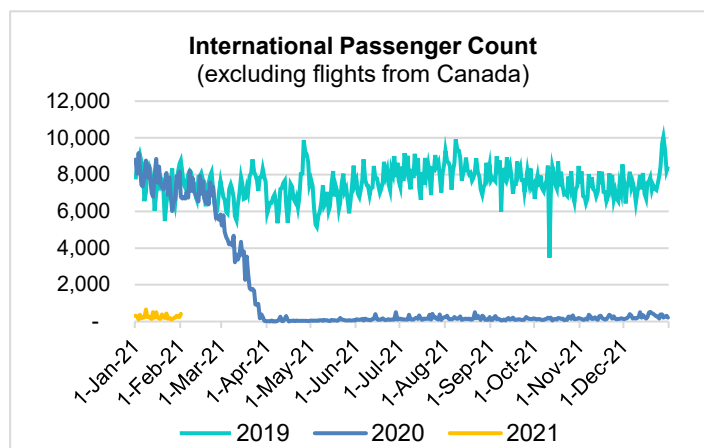
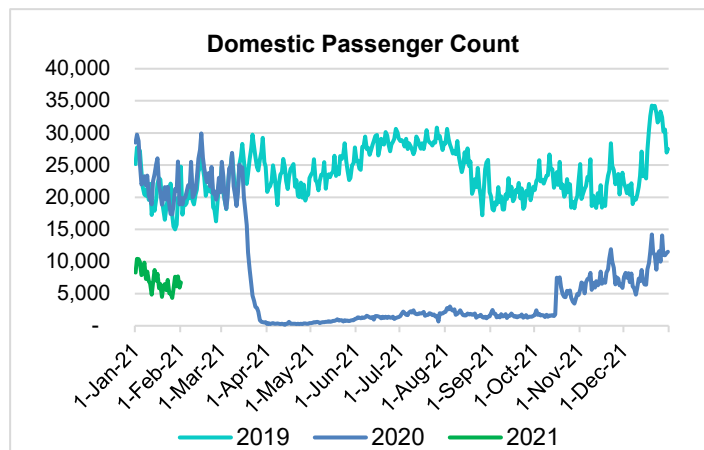
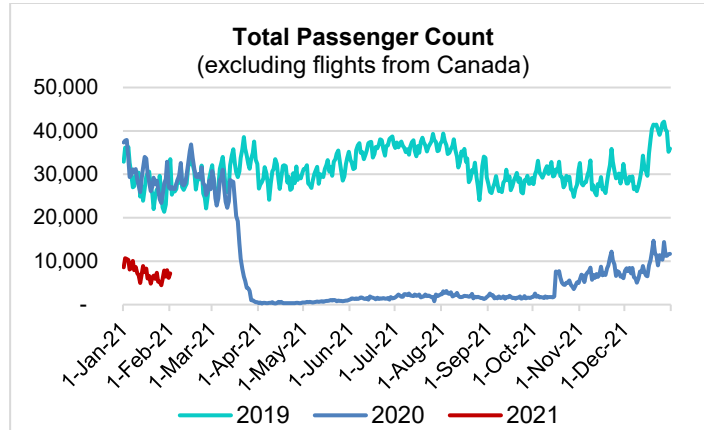
HTA COVID-19 UPDATE

(Issued: 2/2/21 @ 4:30pm)

Reason for Trip by Arrival Airport - Transpacific Screened Passengers as of 02/01/21	Honolulu (HNL)	Kahului (OGG)	Kona (KOA)	Lihue (LIH)	Grand Total
Airline Crew	364	181	91	6	642
Connecting Flight (Transit)	415	21	3	1	440
Corporate Meeting	5	0	0	1	6
Essential Worker	177	17	27	5	226
Honeymoon	4	8	5	0	17
Incentive Trip	1	3	0	0	4
Intended Resident	145	29	37	8	219
Military or Federal Government	165	0	0	2	167
Other	61	24	19	2	106
Other Business	72	24	25	7	128
Pleasure/Vacation	1,676	1,952	685	34	4,347
Returning Resident	831	151	111	16	1,109
Sports Event	1	0	0	0	1
To Attend School	25	0	3	0	28
To Get Married	0	1	2	0	3
Visiting Friends or Relatives	657	217	210	15	1,099
Grand Total	4,599	2,628	1,218	97	8,542

Source: Safe Travels program developed by the State of Hawaii Office of Enterprise Technology Services

Note: The data is preliminary and subject to change



Daily Passenger Count Table

02/01/2021	Domestic	International	Total
Oahu	3916	423	4339
Maui	1722		1722
Island of Hawaii	1061		1061
Kauai	55		55
State	6754	423	7177

Novel Coronavirus in Hawaii

COVID-19 Positive Cases

Cumulative totals as of 12:00pm on February 2, 2021

Total Confirmed Cases	26,007* (64 new)
Hawaii	2,173
Kauai	179
Lanai	107
Maui	1770†
Molokai	25
Oahu	21,021
Out of State	732
Pending	0
Required Hospitalization	1703‡
Hawaii Deaths	410
Cases in the past 14 days	1,384*

Footnotes for COVID-19 Cases

* As a result of updated information, one case from Maui was recategorized to out-of-state.

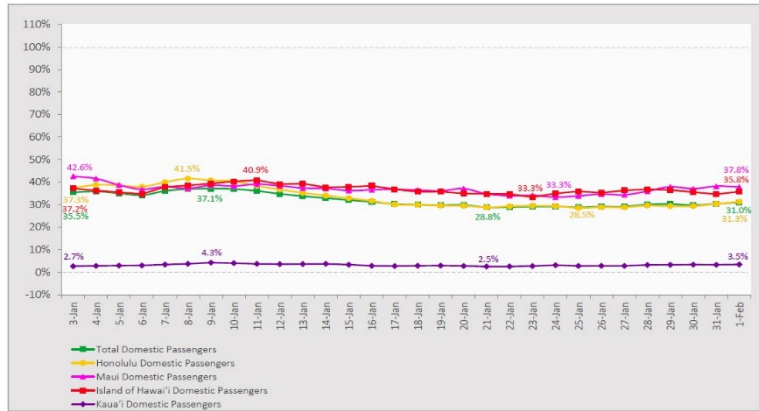
**Using cases reported in the past 14 days provides a rough approximation of the number of cases currently meeting criteria for isolation. This proxy number for "active cases" resolves classification issues for cases unable to be reached or who are out of jurisdiction, for whom precise release from isolation date may not be possible to determine. It is also not influenced by lags in data entry. (This total does not include Hawaii residents diagnosed outside of Hawaii)

†One case is a Lanai resident whose exposure is on Maui Island and who will be remaining on Maui Island for the interim.

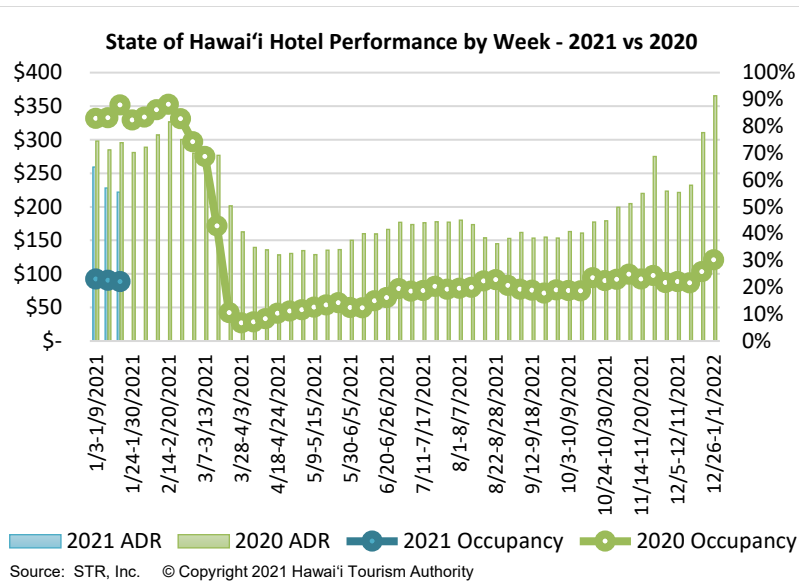
‡Includes Hawaii residents hospitalized out of state.

7-Day Domestic by Island Moving Average Daily Passenger Volume

2021 Volume as Percentage of 2020 Volume
Through February 1, 2021



Source: HVCB analysis based on data from DBEDT
Note: Passenger volume figures include both visitors and residents.



Hawaii Hotel Performance Info:

For the week of January 17 – January 23, 2021

	Occupancy	ADR	RevPAR
State of Hawaii	22.1%	\$221.90	\$48.99
Oahu	21.7%	\$158.77	\$34.45
Maui County	20.1%	\$383.23	\$77.04
Kauai County	19.7%	\$165.50	\$32.54
Island of Hawaii	28.8%	\$222.52	\$64.16

Domestic by Island Month-to-Date and Year-to-Date Daily Passenger Volume

2021 Volume versus 2020 Volume
Through February 1, 2021

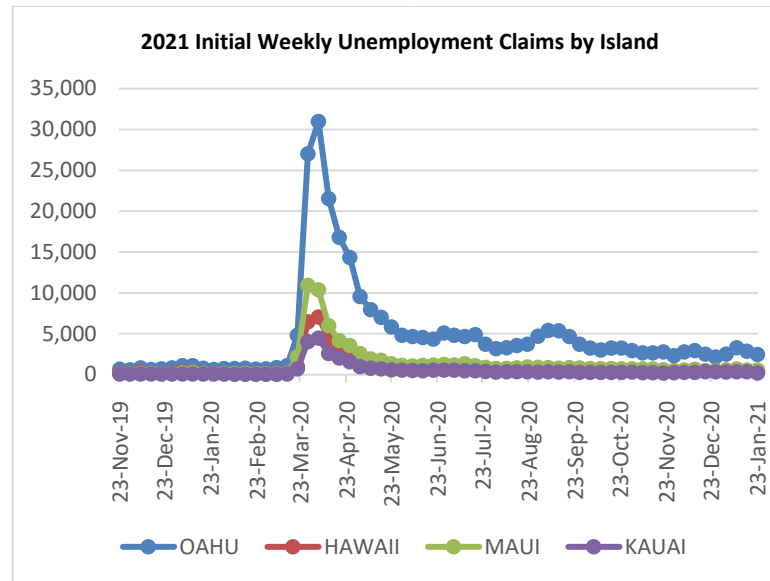
February 2021 (Month-to-Date through February 1)

	2021	2020	Volume Change	Percent Change
Honolulu	3,916	12,376	-8,460	-68.4%
Maui County	1,722	7,066	-5,344	-75.6%
Island of Hawai'i	1,061	3,646	-2,585	-70.9%
Kaua'i	55	2,491	-2,436	-97.8%
Total	6,754	25,579	-18,825	-73.6%

2021 (Year-to-Date through February 1)

	2021	2020	Volume Change	Percent Change
Honolulu	128,686	397,202	-268,516	-67.6%
Maui County	64,183	178,538	-114,355	-64.1%
Island of Hawai'i	30,982	87,510	-56,528	-64.6%
Kaua'i	1,893	60,622	-58,729	-96.9%
Total	225,744	723,872	-498,128	-68.8%

Source: HVCB analysis based on data from DBEDT
Note: Passenger volume figures include both visitors and residents. Total includes other international passengers.



Weekly Unemployment Initial Claims: January 23, 2021

State of Hawaii	3,927
C&C of Oahu	2,482
Hawaii County	499
Maui County	572
Kauai County	218
Agent (filed in Hawaii against another state)	156

News Highlights

February 2, 2021

KHON2: [What side effects to watch out for after second shot of COVID-19 vaccine](#)

Pacific Business News: [HTA Study: Most visitors to Hawaii report having trips that met or exceeded expectations](#)

West Hawaii Today: [Visitors mostly happy with Hawaii trips, despite COVID limitations](#)

Big Island Now: [Pandemic Travel Toll Not Impacting Hawaii Experience, Survey Says](#)

The Maui News: [Maui businesses take COVID-19 precautions](#)

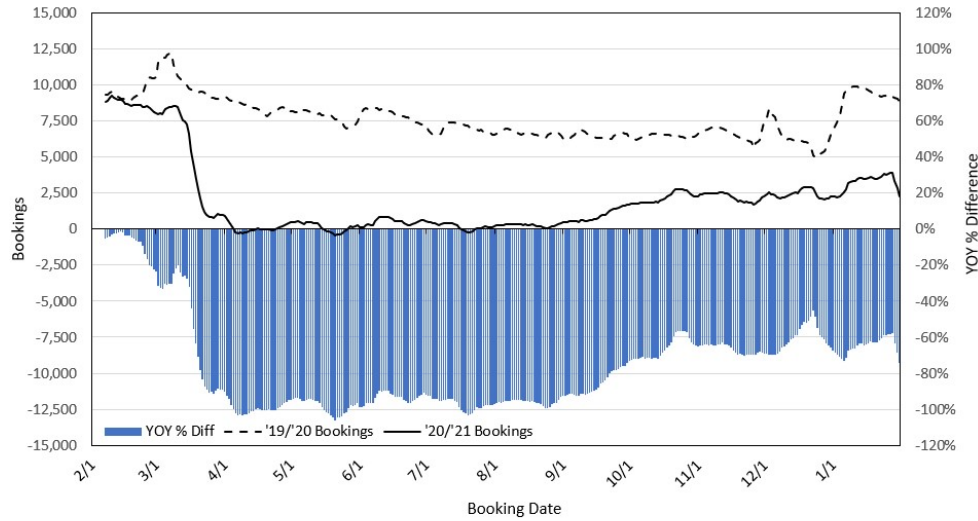
TravelAge West: [Is the Travel Industry Opposed to Requiring Negative COVID-19 Tests for Domestic Travel?](#)

Travel Pulse: [What Travelers Think of Hawaii's Safe Travels Program](#)

Travel Pulse: [Multiple Travel Industry Groups Call COVID-19 Testing for Domestic Flights 'Unwarranted'](#)

Travel Pulse: [New Government Mask Mandate for Airlines Now in Effect](#)

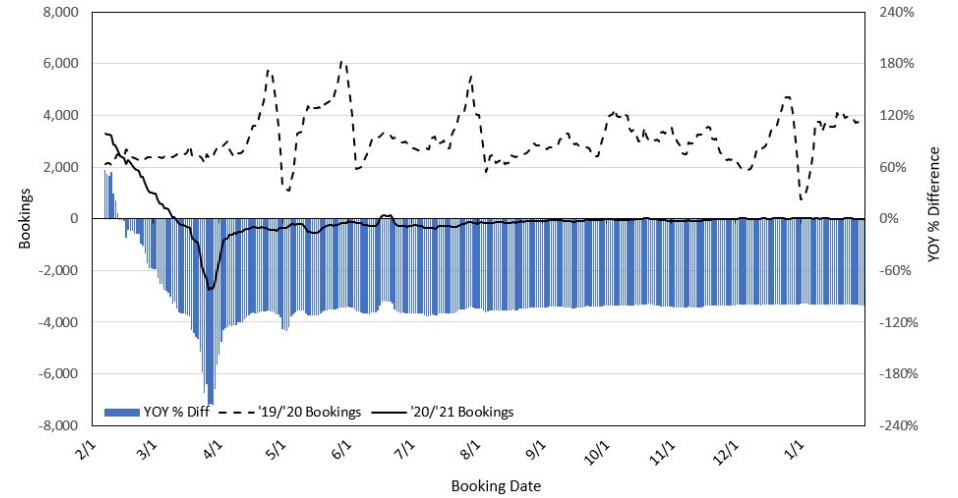
Travel Agency Bookings to Hawaii for Future Arrivals* Based on a 7-day Moving Average, as of January 31, 2021 U.S.



*Future Arrivals refers to all arrivals that are 'future' relative to the referenced booking date.
Source: Global Agency Pro

Update: Jan 31, 2021

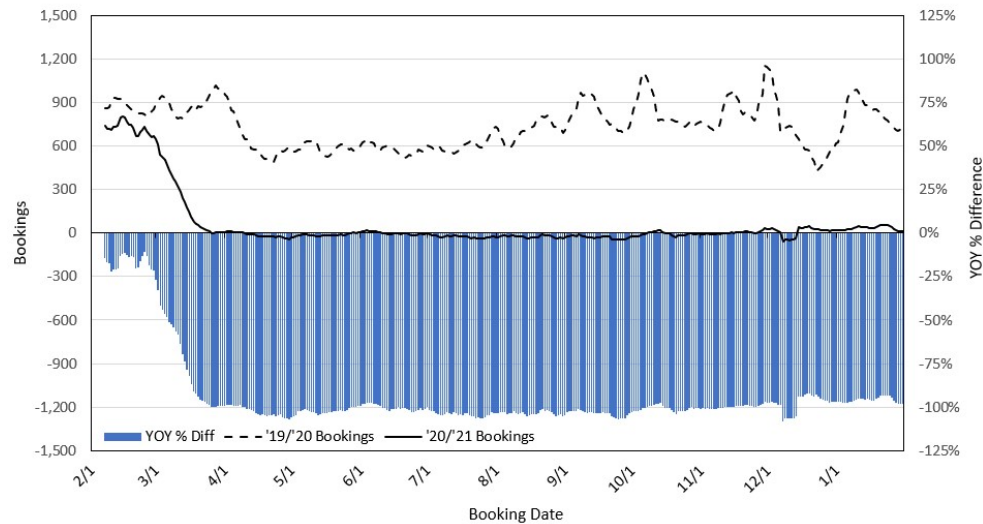
Travel Agency Bookings to Hawaii for Future Arrivals* Based on a 7-day Moving Average, as of January 31, 2021 Japan



*Future Arrivals refers to all arrivals that are 'future' relative to the referenced booking date.
Source: Global Agency Pro

Update: Jan 31, 2021

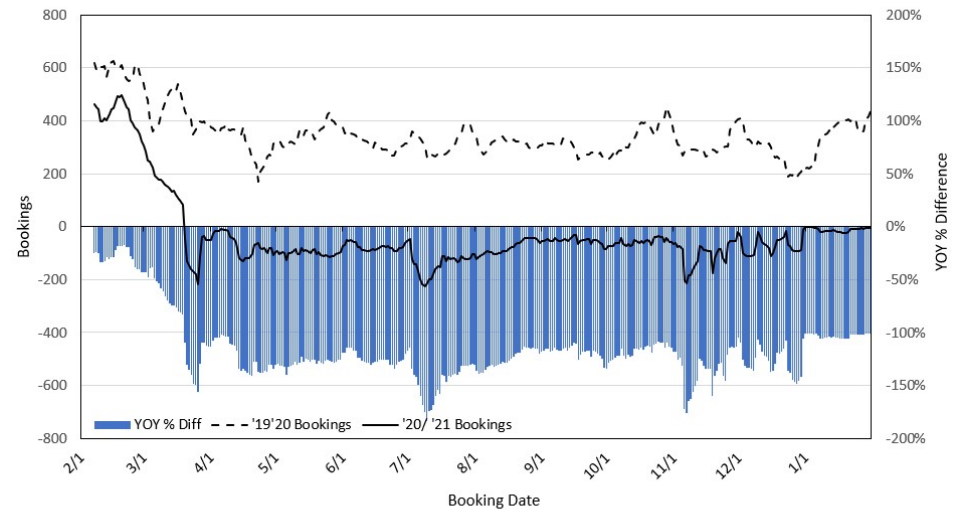
Travel Agency Bookings to Hawaii for Future Arrivals* Based on a 7-day Moving Average, as of January 31, 2021 Canada



*Future Arrivals refers to all arrivals that are 'future' relative to the referenced booking date.
Source: Global Agency Pro

Update: Jan 31, 2021

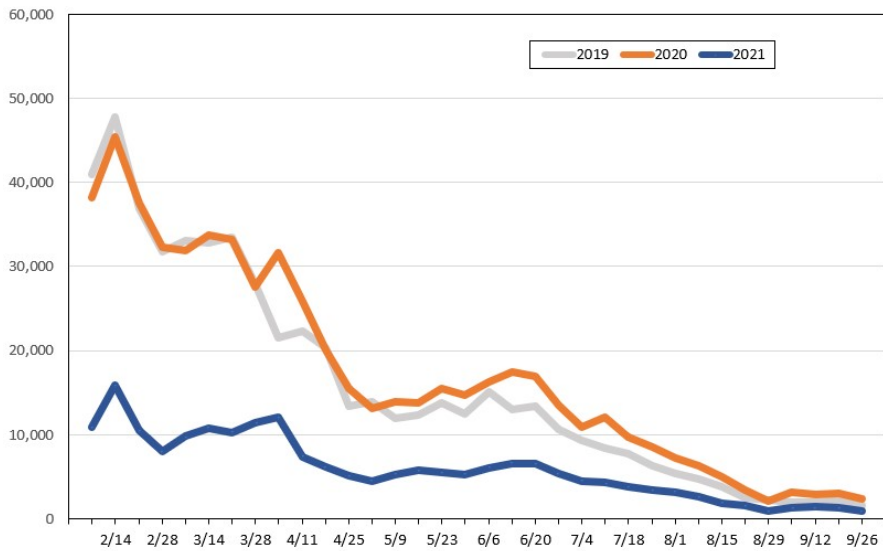
Travel Agency Bookings to Hawaii for Future Arrivals* Based on a 7-day Moving Average, as of January 31, 2021 Australia



*Future Arrivals refers to all arrivals that are 'future' relative to the referenced booking date.
Source: Global Agency Pro

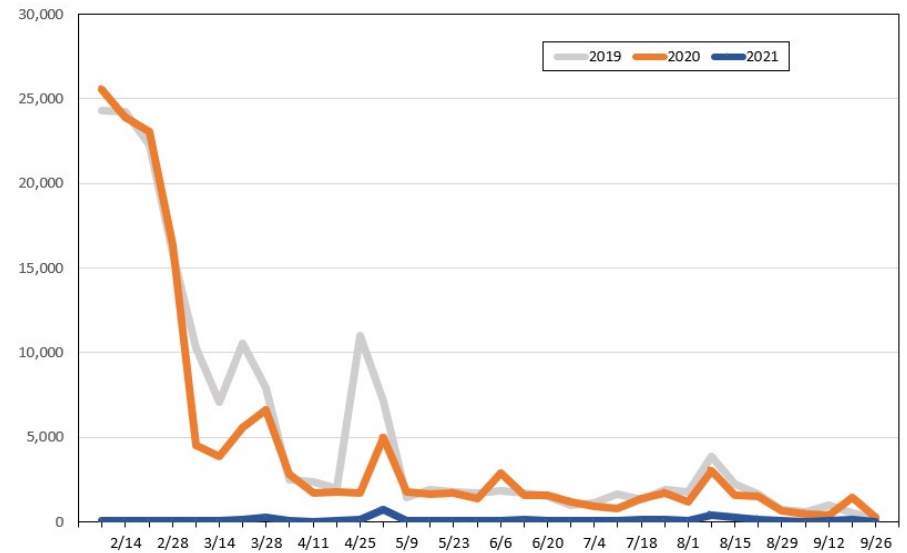
Update: Jan 31, 2021

Travel Agency Weekly Bookings for Future Travel to Hawai'i as of January 31, 2021
U.S.



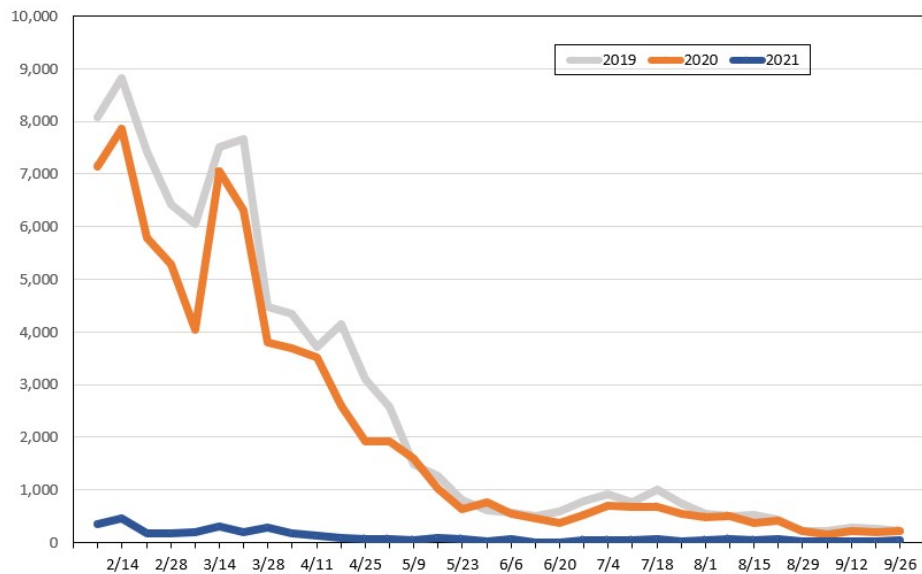
Source: Global Agency Pro, as of January 31, 2021

Travel Agency Weekly Bookings for Future Travel to Hawai'i as of January 31, 2021
Japan



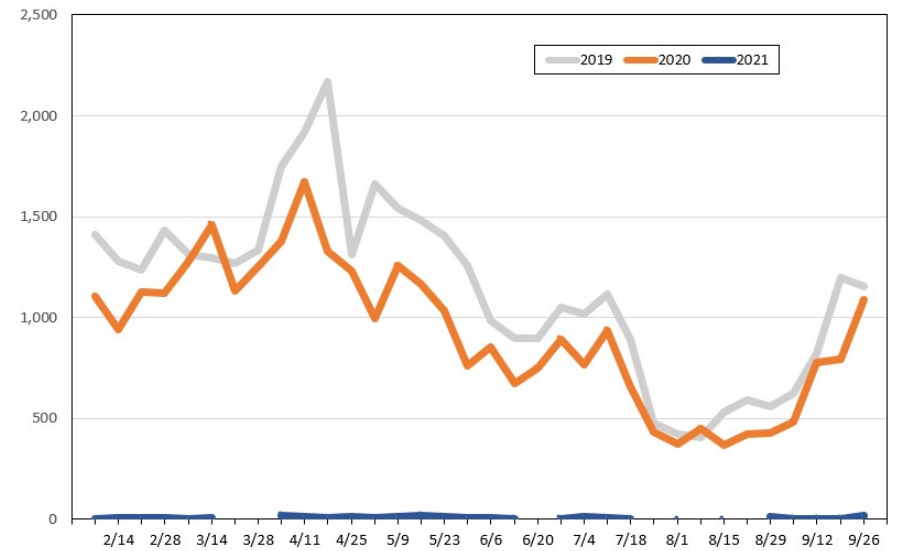
Source: Global Agency Pro, as of January 31, 2021

Travel Agency Weekly Bookings for Future Travel to Hawai'i as of January 31, 2021
Canada



Source: Global Agency Pro, as of January 31, 2021

Travel Agency Weekly Bookings for Future Travel to Hawai'i as of January 31, 2021
Australia



Source: Global Agency Pro, as of January 31, 2021