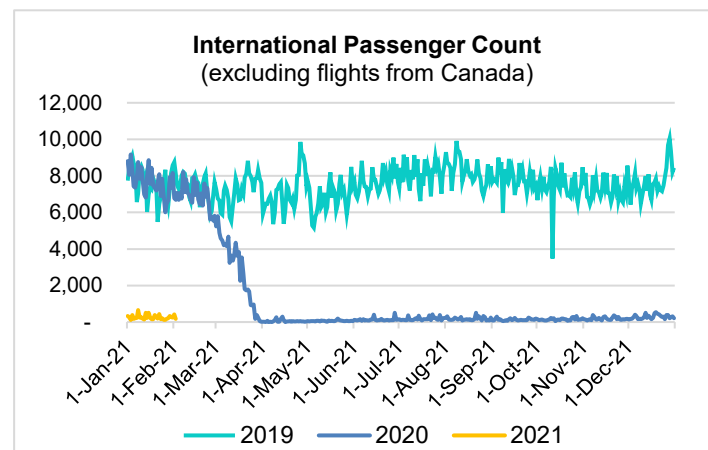
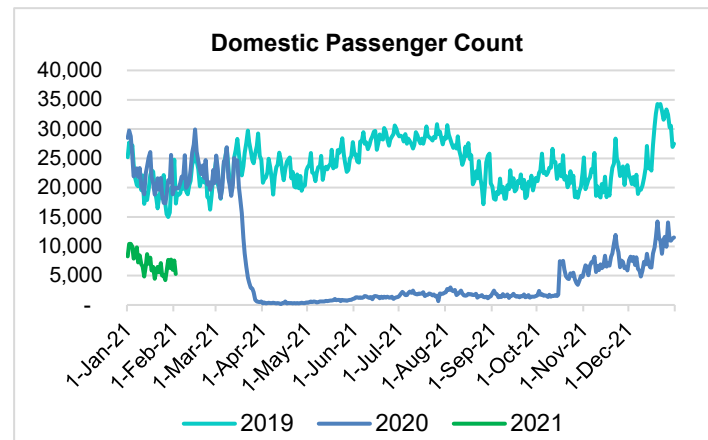
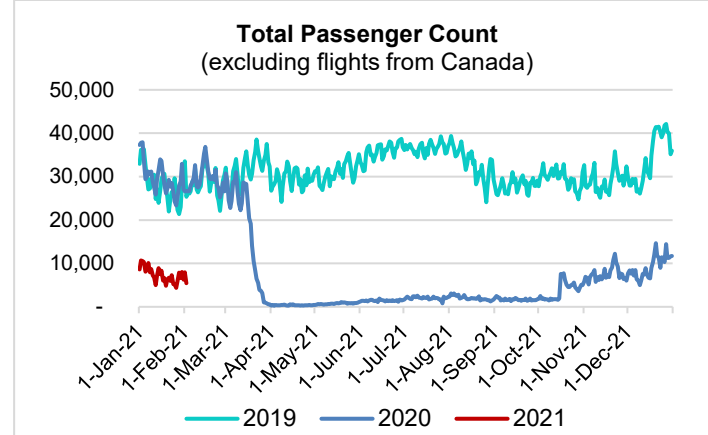


HTA COVID-19 UPDATE

(Issued: 2/3/21 @ 4:30pm)

Reason for Trip by Arrival Airport - Transpacific Screened Passengers as of 02/02/21	Honolulu (HNL)	Kahului (OGG)	Kona (KOA)	Lihue (LIH)	Grand Total
Airline Crew	340	175	90	6	611
Connecting Flight (Transit)	345	17	4	1	367
Corporate Meeting	2	0	1	0	3
Essential Worker	129	12	11	4	156
Honeymoon	1	4	0	0	5
Incentive Trip	1	0	0	0	1
Intended Resident	71	12	22	2	107
Military or Federal Government	74	0	1	0	75
Other	32	7	8	1	48
Other Business	50	27	13	2	92
Pleasure/Vacation	1,191	1,462	544	22	3,219
Returning Resident	549	111	99	14	773
Sports Event	0	8	0	0	8
To Attend School	5	0	2	0	7
To Get Married	5	4	0	0	9
Visiting Friends or Relatives	508	153	136	8	805
Grand Total	3,303	1,992	931	60	6,286

Source: Safe Travels program developed by the State of Hawaii Office of Enterprise Technology Services
Note: The data is preliminary and subject to change



Daily Passenger Count Table

02/02/2021	Domestic	International	Total
Oahu	2690	166	2856
Maui	1710		1710
Island of Hawaii	835		835
Kauai	50		50
State	5285	166	5451

Novel Coronavirus in Hawaii

COVID-19 Positive Cases

Cumulative totals as of 12:00pm on February 3, 2021

Total Confirmed Cases	26,081* (74 new)
Hawaii	2,177
Kauai	179
Lanai	107
Maui	1793†
Molokai	25
Oahu	21,062
Out of State	738
Pending	0
Required Hospitalization	1713‡
Hawaii Deaths	414
Cases in the past 14 days	1,383*

Footnotes for COVID-19 Cases

* As a result of updated information, one case from Maui was recategorized to out-of-state.

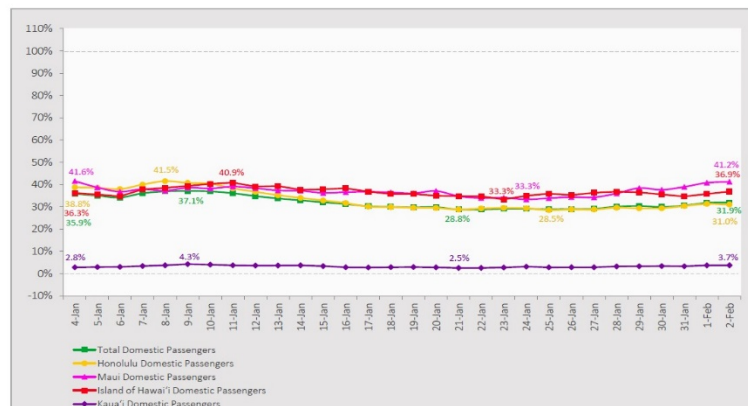
**Using cases reported in the past 14 days provides a rough approximation of the number of cases currently meeting criteria for isolation. This proxy number for "active cases" resolves classification issues for cases unable to be reached or who are out of jurisdiction, for whom precise release from isolation date may not be possible to determine. It is also not influenced by lags in data entry. (This total does not include Hawaii residents diagnosed outside of Hawaii)

†One case is a Lanai resident whose exposure is on Maui Island and who will be remaining on Maui Island for the interim.

‡Includes Hawaii residents hospitalized out of state.

7-Day Domestic by Island Moving Average Daily Passenger Volume

2021 Volume as Percentage of 2020 Volume
Through February 2, 2021



Source: HVCB analysis based on data from DBEDT
Note: Passenger volume figures include both visitors and residents.

Domestic by Island Month-to-Date and Year-to-Date Daily Passenger Volume

2021 Volume versus 2020 Volume
Through February 2, 2021

February 2021 (Month-to-Date through February 2)

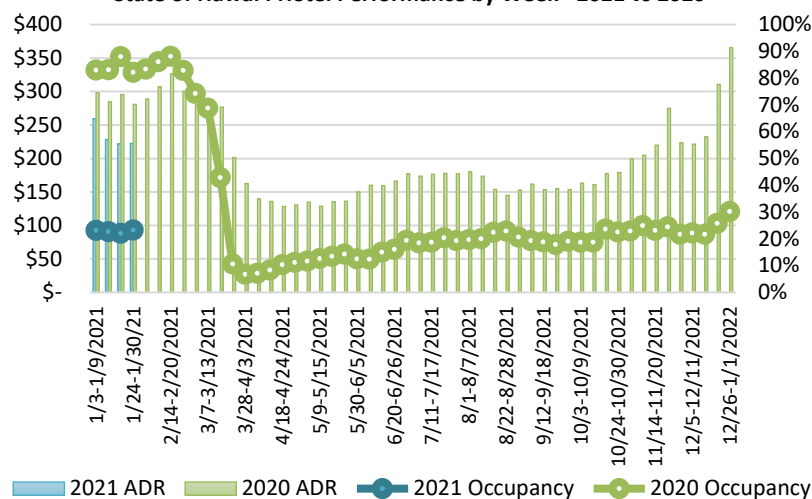
	2021	2020	Volume Change	Percent Change
Honolulu	6,606	23,133	-16,527	-71.4%
Maui County	4,214	11,506	-7,292	-63.4%
Island of Hawai'i	1,896	5,832	-3,936	-67.5%
Kaua'i	136	3,998	-3,862	-96.6%
Total	12,852	44,469	-31,617	-71.1%

2021 (Year-to-Date through February 2)

	2021	2020	Volume Change	Percent Change
Honolulu	131,376	407,959	-276,583	-67.8%
Maui County	66,950	182,978	-116,028	-63.4%
Island of Hawai'i	31,817	89,696	-57,879	-64.5%
Kaua'i	1,974	62,129	-60,155	-96.8%
Total	232,117	742,762	-510,645	-68.7%

Source: HVCB analysis based on data from DBEDT
Note: Passenger volume figures include both visitors and residents. Total includes other international passengers.

State of Hawai'i Hotel Performance by Week - 2021 vs 2020



Source: STR, Inc. © Copyright 2021 Hawai'i Tourism Authority

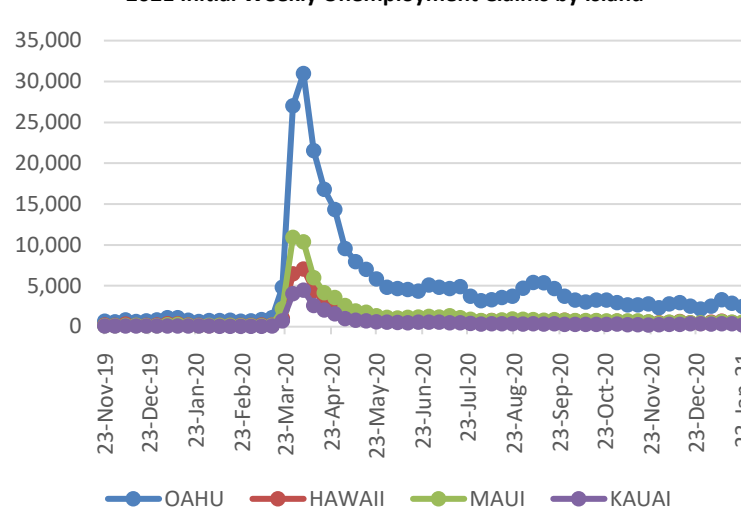
Hawaii Hotel Performance Info:

For the week of January 24 – January 30, 2021

	Occupancy	ADR	RevPAR
State of Hawaii	23.3%	\$ 222.55	\$ 51.85
Oahu	22.8%	\$ 159.49	\$ 36.32
Maui County	20.1%	\$ 379.48	\$ 76.09
Kauai County	24.5%	\$ 169.75	\$ 41.53
Island of Hawaii	31.0%	\$ 238.57	\$ 74.02

Statistics based on participating properties and may vary by week.

2021 Initial Weekly Unemployment Claims by Island



Weekly Unemployment Initial Claims: January 23, 2021

State of Hawaii	3,927
C&C of Oahu	2,482
Hawaii County	499
Maui County	572
Kauai County	218
Agent (filed in Hawaii against another state)	156

News Highlights

February 3, 2021

Hawaii News Now: [Governor pushes back against efforts to ease COVID restrictions on Oahu](#)

KITV4: [Longs Drugs to begin administering COVID-19 vaccines at 7 different locations statewide](#)

KHON2: [Hawaiian Airlines warns more layoffs to come](#)

Honolulu Civil Beat: [More Contagious UK Variant Of COVID-19 May Have Been Found In Hawaii](#)

West Hawaii Today: [COVID-19 case count reaches 2,173 as county confirms cluster associated with Kona coffee farm](#)

The Garden Island: [Virus variant found on Kauai](#)

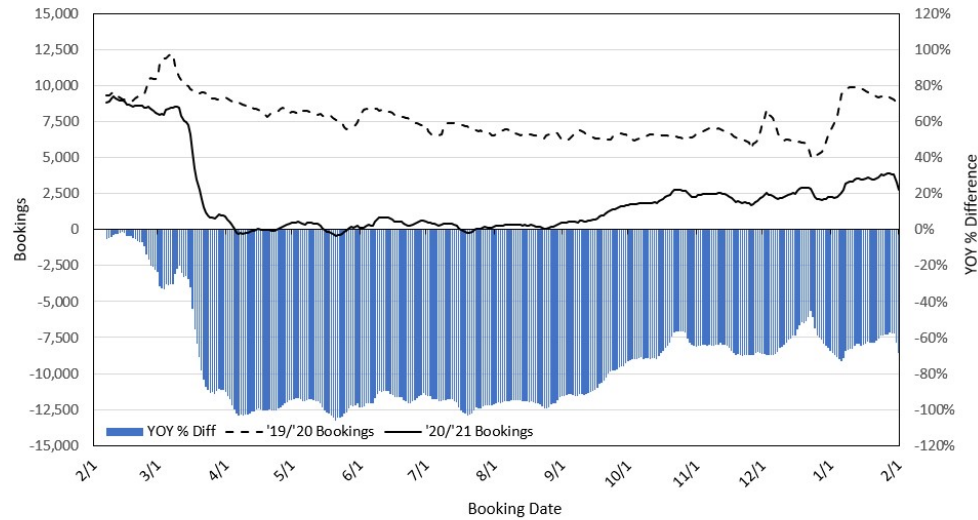
Hawaii Tribune-Herald: [HTA survey: Visitors satisfied with Hawaii trips, despite COVID limitations](#)

Hawaii Tribune-Herald: [Additional Big Isle sites to get vaccinated](#)

Travel Pulse: [CDC Sets Mask Mandate for Cruises - Is a Vaccine Requirement Next?](#)

Travel Weekly: [Fake Covid documents could cause real problems for travel](#)

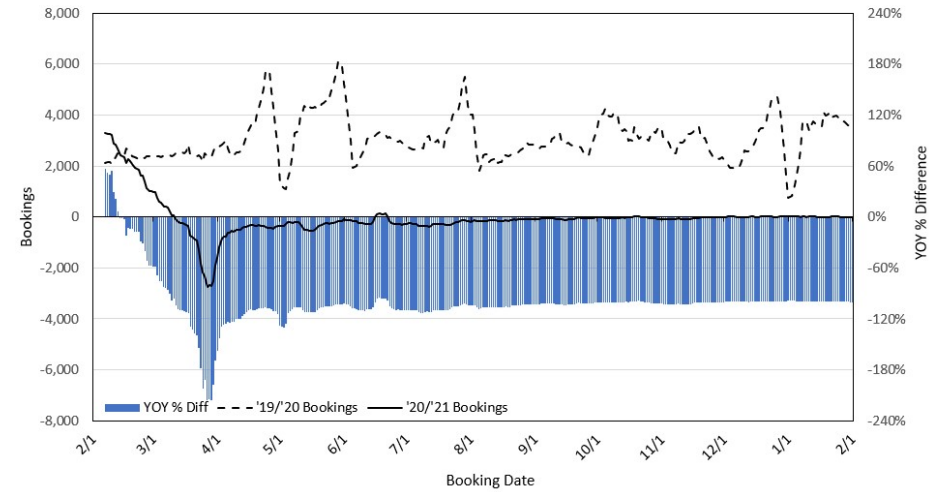
Travel Agency Bookings to Hawaii for Future Arrivals* Based on a 7-day Moving Average, as of February 1, 2021 U.S.



*Future Arrivals refers to all arrivals that are 'future' relative to the referenced booking date.
Source: Global Agency Pro

Update: Feb 1, 2021

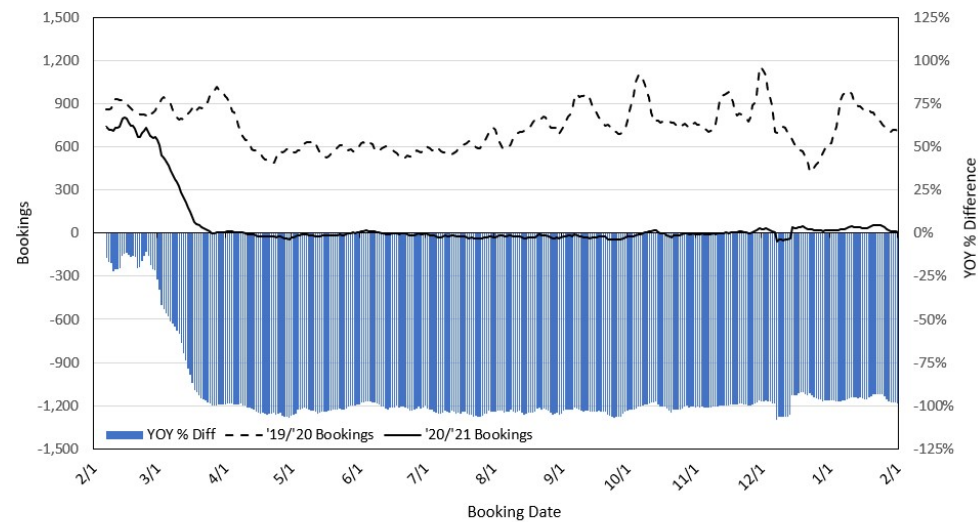
Travel Agency Bookings to Hawaii for Future Arrivals* Based on a 7-day Moving Average, as of February 1, 2021 Japan



*Future Arrivals refers to all arrivals that are 'future' relative to the referenced booking date.
Source: Global Agency Pro

Update: Feb 1, 2021

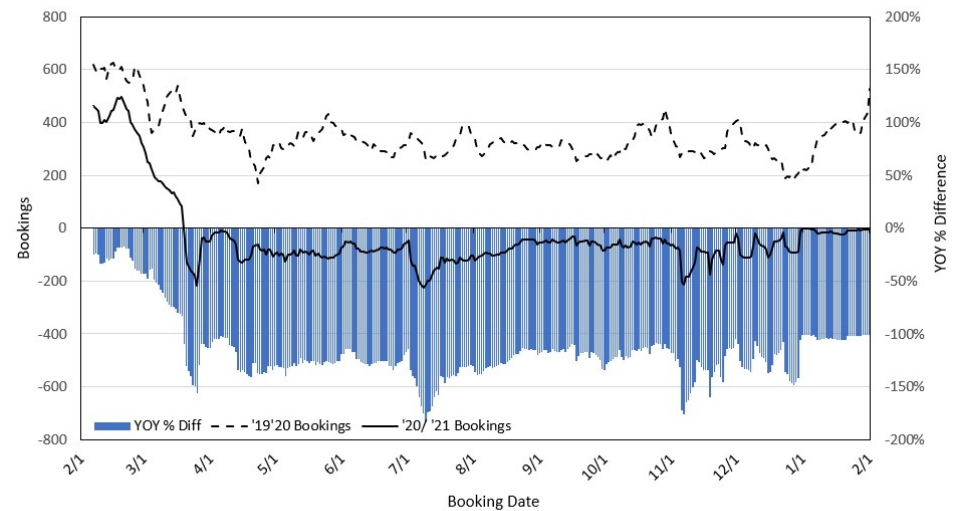
Travel Agency Bookings to Hawaii for Future Arrivals* Based on a 7-day Moving Average, as of February 1, 2021 Canada



*Future Arrivals refers to all arrivals that are 'future' relative to the referenced booking date.
Source: Global Agency Pro

Update: Feb 1, 2021

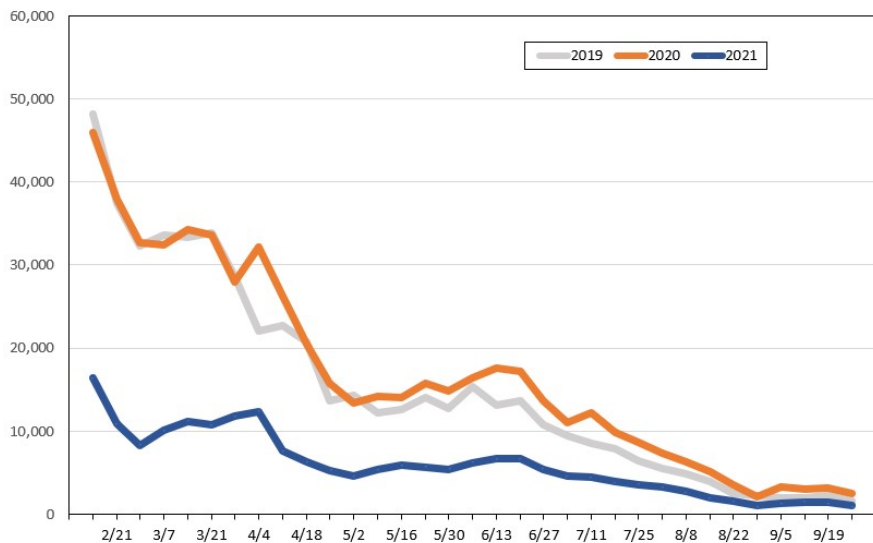
Travel Agency Bookings to Hawaii for Future Arrivals* Based on a 7-day Moving Average, as of February 1, 2021 Australia



*Future Arrivals refers to all arrivals that are 'future' relative to the referenced booking date.
Source: Global Agency Pro

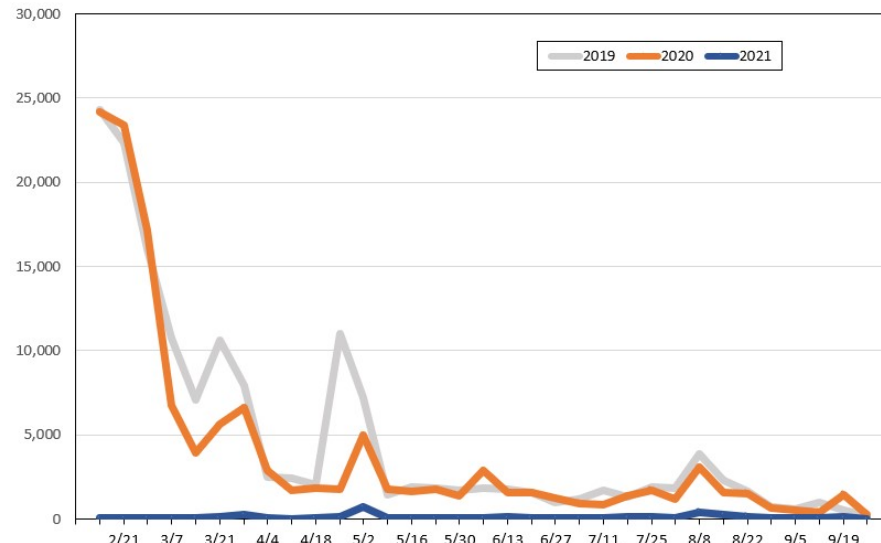
Update: Feb 1, 2021

Travel Agency Weekly Bookings for Future Travel to Hawai'i as of February 1, 2021
U.S.



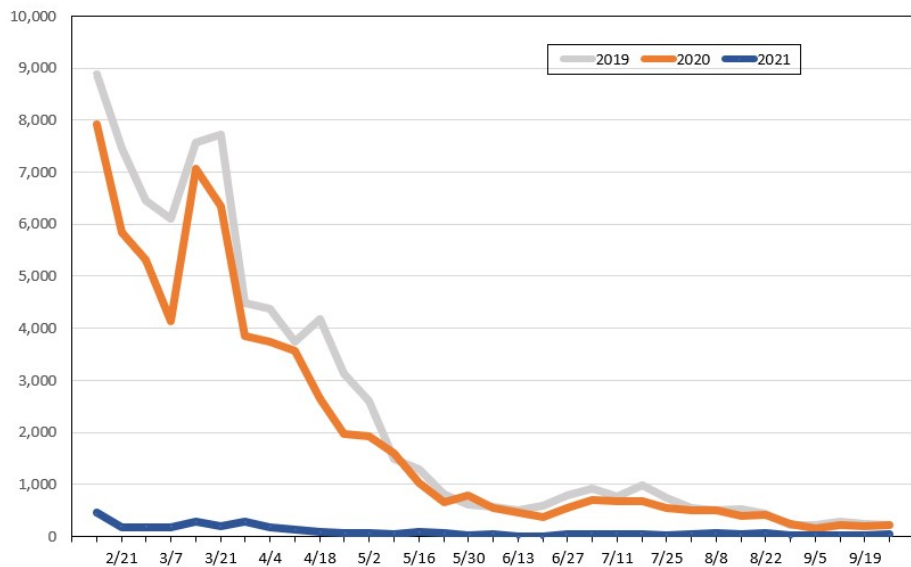
Source: Global Agency Pro, as of February 1, 2021

Travel Agency Weekly Bookings for Future Travel to Hawai'i as of February 1, 2021
Japan



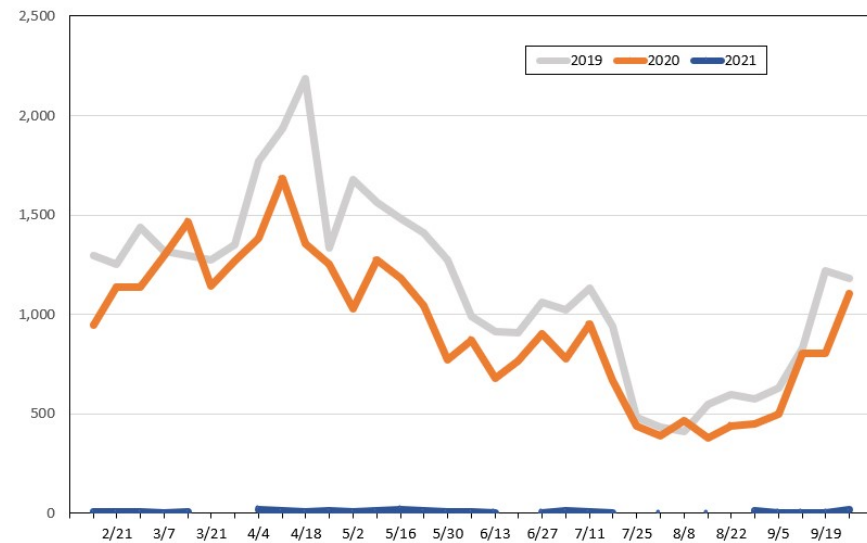
Source: Global Agency Pro, as of February 1, 2021

Travel Agency Weekly Bookings for Future Travel to Hawai'i as of February 1, 2021
Canada



Source: Global Agency Pro, as of February 1, 2021

Travel Agency Weekly Bookings for Future Travel to Hawai'i as of February 1, 2021
Australia



Source: Global Agency Pro, as of February 1, 2021