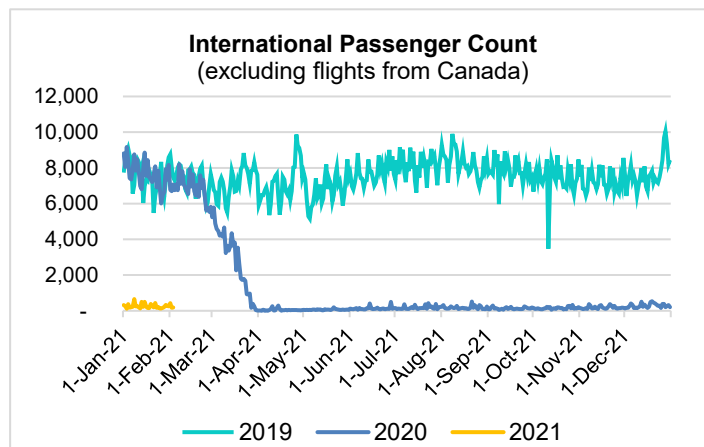
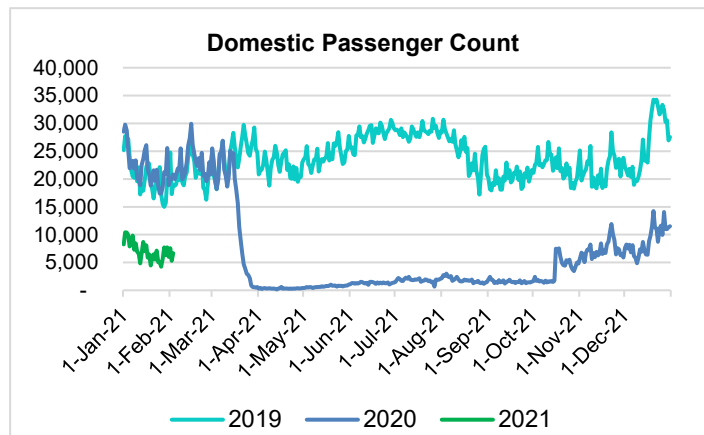
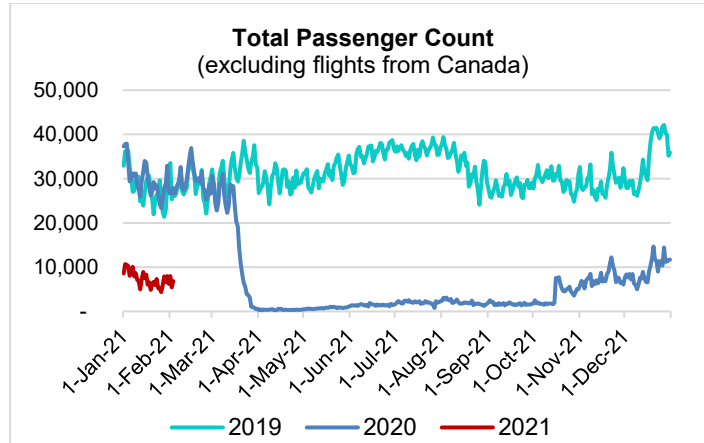


# HTA COVID-19 UPDATE

(Issued: 2/4/21 @ 4:30pm)

Reason for Trip by Arrival Airport - Transpacific Screened Passengers as of 02/03/21	Honolulu (HNL)	Kahului (OGG)	Kona (KOA)	Lihue (LIH)	Grand Total
Airline Crew	353	172	78	6	609
Connecting Flight (Transit)	287	18	1	0	306
Corporate Meeting	1	4	1	0	6
Essential Worker	76	13	9	2	100
Honeymoon	11	4	0	0	15
Incentive Trip	1	0	2	0	3
Intended Resident	84	17	26	1	128
Military or Federal Government	75	1	1	0	77
Other	33	11	10	0	54
Other Business	44	33	11	2	90
Pleasure/Vacation	1,739	2,000	791	22	4,552
Returning Resident	544	116	80	24	764
Sports Event	1	0	0	0	1
To Attend School	6	0	1	0	7
To Get Married	7	2	0	0	9
Visiting Friends or Relatives	627	221	138	2	988
<b>Grand Total</b>	<b>3,889</b>	<b>2,612</b>	<b>1,149</b>	<b>59</b>	<b>7,709</b>

**Source:** Safe Travels program developed by the State of Hawaii Office of Enterprise Technology Services  
**Note:** The data is preliminary and subject to change



## Daily Passenger Count Table

02/03/2021	Domestic	International	Total
Oahu	3290	185	3475
Maui	2301		2301
Island of Hawaii	1021		1021
Kauai	50		50
State	6662	185	6847

## Novel Coronavirus in Hawaii

### COVID-19 Positive Cases

Cumulative totals as of 12:00pm on February 4, 2021

Total Confirmed Cases	26,187* (107 new)
Hawaii	2,184
Kauai	178
Lanai	107
Maui	1809†
Molokai	25
Oahu	21,141
Out of State	743
Pending	0
Required Hospitalization	1724‡
Hawaii Deaths	416
Cases in the past 14 days	1,374*

### Footnotes for COVID-19 Cases

\* As a result of updated information, one case on Oahu was recategorized to the Island of Hawaii, and one case on Kauai was removed from the counts.

\*\*Using cases reported in the past 14 days provides a rough approximation of the number of cases currently meeting criteria for isolation. This proxy number for "active cases" resolves classification issues for cases unable to be reached or who are out of jurisdiction, for whom precise release from isolation date may not be possible to determine. It is also not influenced by lags in data entry. (This total does not include Hawaii residents diagnosed outside of Hawaii)

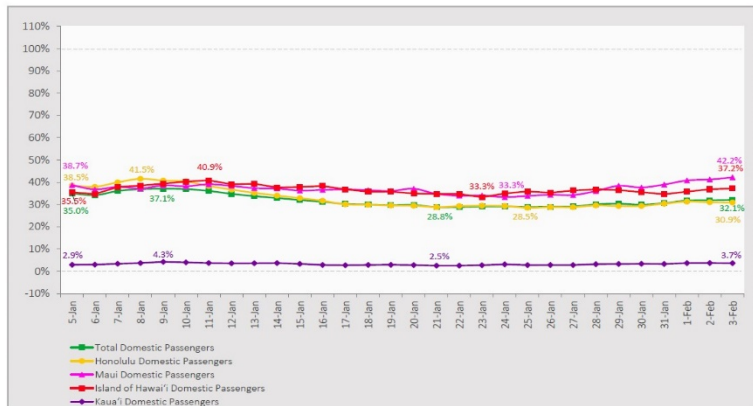
†One case is a Lanai resident whose exposure is on Maui Island and who will be remaining on Maui Island for the interim.

‡Includes Hawaii residents hospitalized out of state.

## 7-Day Domestic by Island Moving Average Daily Passenger Volume

2021 Volume as Percentage of 2020 Volume

Through February 3, 2021



Source: HVCB analysis based on data from DBEDT  
Note: Passenger volume figures include both visitors and residents.

## Domestic by Island Month-to-Date and Year-to-Date Daily Passenger Volume

2021 Volume versus 2020 Volume

Through February 3, 2021

February 2021 (Month-to-Date through February 3)

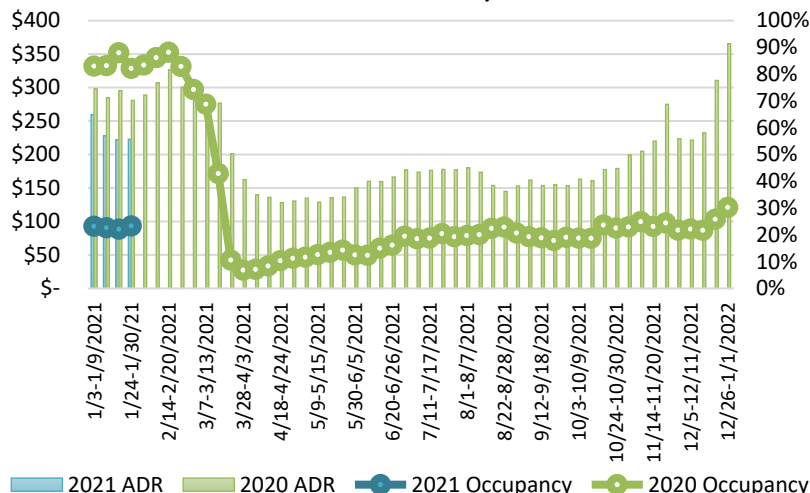
	2021	2020	Volume Change	Percent Change
Honolulu	9,896	34,334	-24,438	-71.2%
Maui County	6,515	16,024	-9,509	-59.3%
Island of Hawai'i	2,917	8,269	-5,352	-64.7%
Kaua'i	186	5,710	-5,524	-96.7%
<b>Total</b>	<b>19,514</b>	<b>64,337</b>	<b>-44,823</b>	<b>-69.7%</b>

2021 (Year-to-Date through February 3)

	2021	2020	Volume Change	Percent Change
Honolulu	134,666	419,160	-284,494	-67.9%
Maui County	69,251	187,496	-118,245	-63.1%
Island of Hawai'i	32,838	92,133	-59,295	-64.4%
Kaua'i	2,024	63,841	-61,817	-96.8%
<b>Total</b>	<b>238,779</b>	<b>762,630</b>	<b>-523,851</b>	<b>-68.7%</b>

Source: HVCB analysis based on data from DBEDT  
Note: Passenger volume figures include both visitors and residents. Total includes other international passengers.

## State of Hawai'i Hotel Performance by Week - 2021 vs 2020



Source: STR, Inc. © Copyright 2021 Hawai'i Tourism Authority

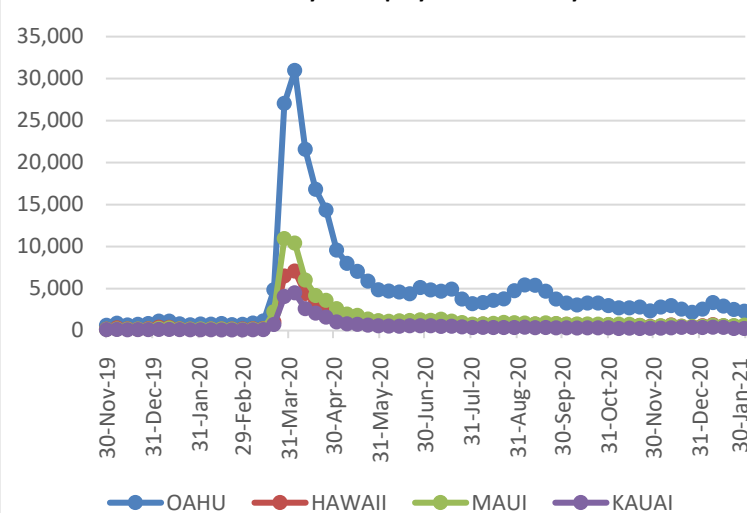
## Hawaii Hotel Performance Info:

For the week of January 24 – January 30, 2021

	Occupancy	ADR	RevPAR
<b>State of Hawaii</b>	23.3%	\$ 222.55	\$ 51.85
<b>Oahu</b>	22.8%	\$ 159.49	\$ 36.32
<b>Maui County</b>	20.1%	\$ 379.48	\$ 76.09
<b>Kauai County</b>	24.5%	\$ 169.75	\$ 41.53
<b>Island of Hawaii</b>	31.0%	\$ 238.57	\$ 74.02

Statistics based on participating properties and may vary by week.

## 2021 Initial Weekly Unemployment Claims by Island



## Weekly Unemployment Initial Claims: January 30, 2021

<b>State of Hawaii</b>	3,823
<b>C&amp;C of Oahu</b>	2,279
<b>Hawaii County</b>	434
<b>Maui County</b>	622
<b>Kauai County</b>	221
<b>Agent</b> (filed in Hawaii against another state)	267

## News Highlights

February 4, 2021

**Hawaii News Now:** [From hospitals to KTA pharmacies, here's how to get a COVID vaccine on Hawaii Island](#)

**Hawaii News Now:** [Hawaii visitors happy with trips despite virus restrictions](#)

**The Maui News:** [MCCC dealing with first case of COVID-19](#)

**West Hawaii Today:** [Contact tracers still at work as COVID vaccine rollout continues](#)

**Big Island Now:** [Hawaii Residency Required For COVID-19 Vaccine](#)

**Conde Nast Traveler:** [Is It Safe for My Parents to Visit Once They're Vaccinated?](#)

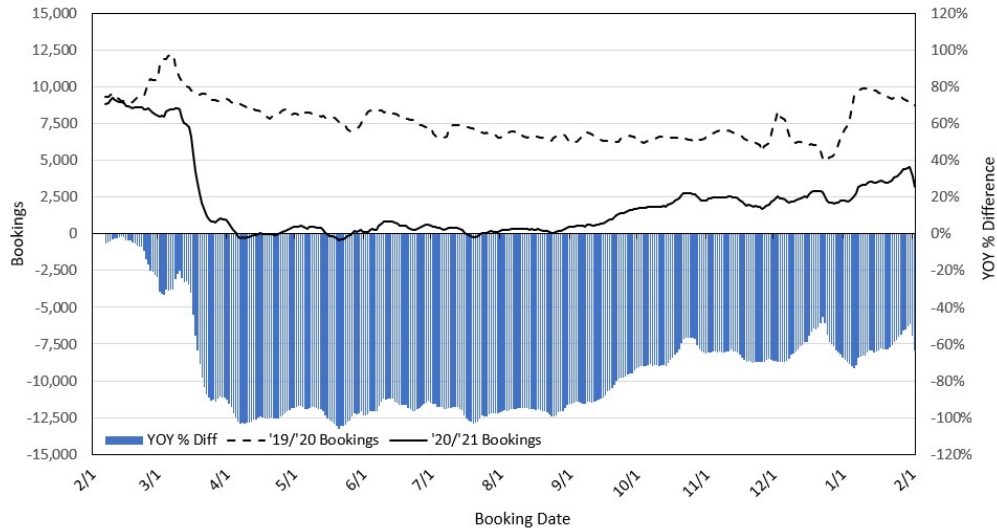
**New York Times:** [The Coming Soon: The 'Vaccine Passport'](#)

**Travel Pulse:** [COVID-19 US Travel Restrictions: State-By-State Guide for February 2021](#)

**USA Today:** [Nearly 90% of Hawaii visitors surveyed were happy with trips despite COVID-19 restrictions](#)

**Frommer's:** [The Testing and Quarantine Rules for Traveling to Hawaii During the Pandemic](#)

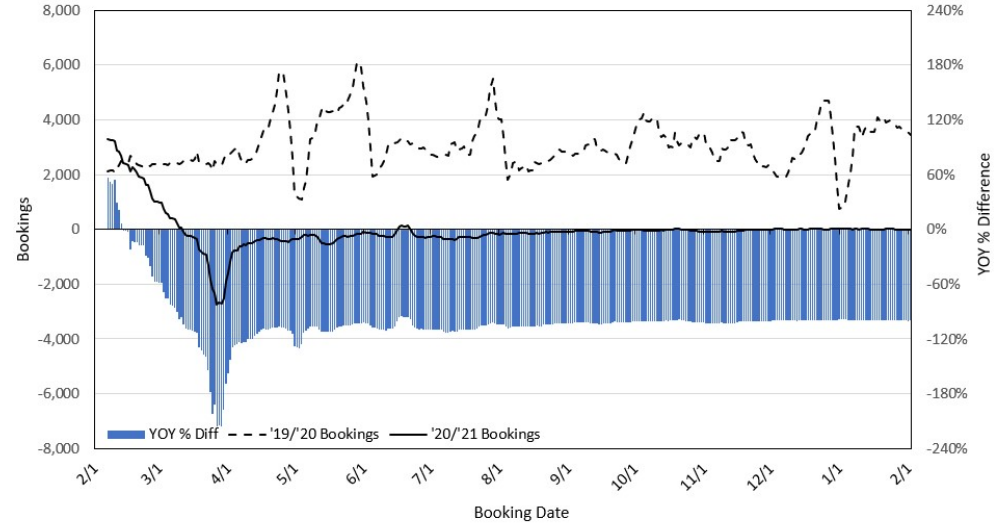
### Travel Agency Bookings to Hawaii for Future Arrivals\* Based on a 7-day Moving Average, as of February 2, 2021 U.S.



\*Future Arrivals refers to all arrivals that are 'future' relative to the referenced booking date.  
Source: Global Agency Pro

Update: Feb 2, 2021

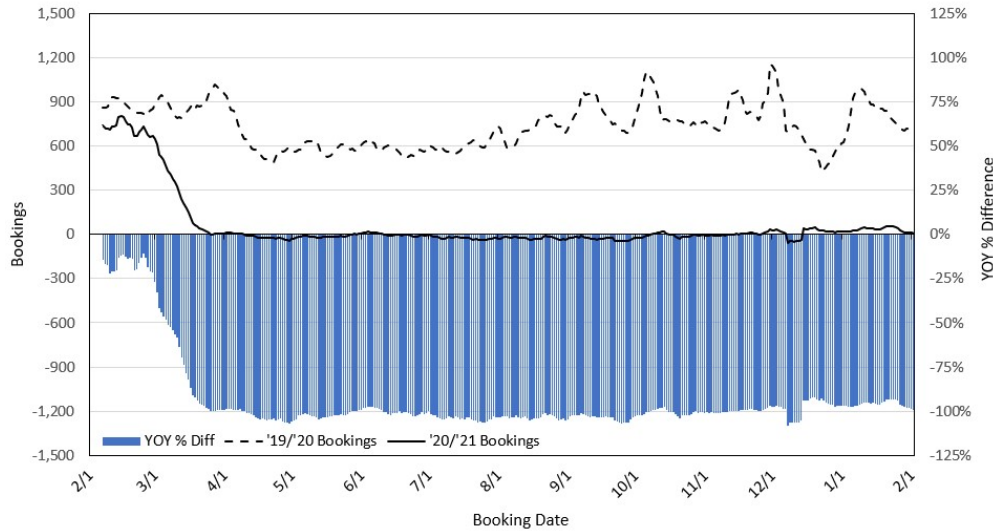
### Travel Agency Bookings to Hawaii for Future Arrivals\* Based on a 7-day Moving Average, as of February 2, 2021 Japan



\*Future Arrivals refers to all arrivals that are 'future' relative to the referenced booking date.  
Source: Global Agency Pro

Update: Feb 2, 2021

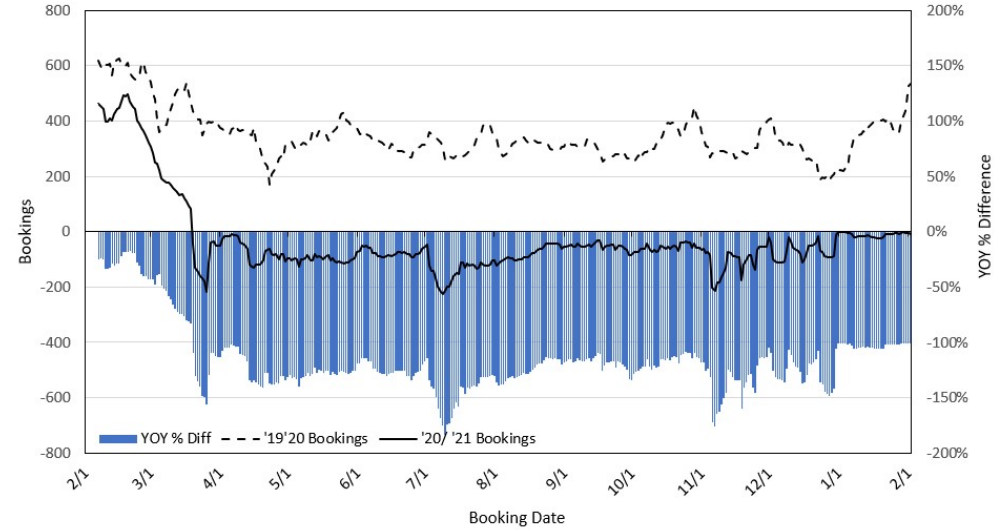
### Travel Agency Bookings to Hawaii for Future Arrivals\* Based on a 7-day Moving Average, as of February 2, 2021 Canada



\*Future Arrivals refers to all arrivals that are 'future' relative to the referenced booking date.  
Source: Global Agency Pro

Update: Feb 2, 2021

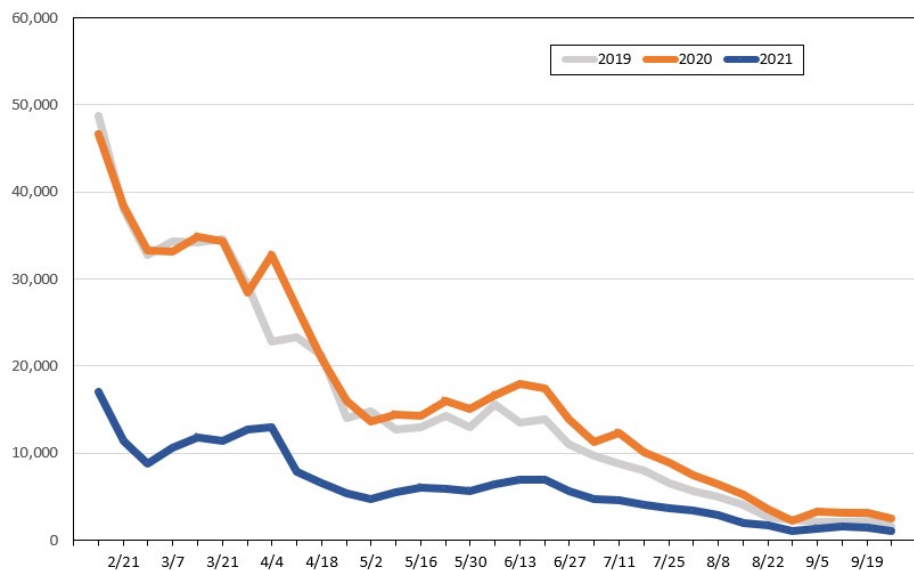
### Travel Agency Bookings to Hawaii for Future Arrivals\* Based on a 7-day Moving Average, as of February 2, 2021 Australia



\*Future Arrivals refers to all arrivals that are 'future' relative to the referenced booking date.  
Source: Global Agency Pro

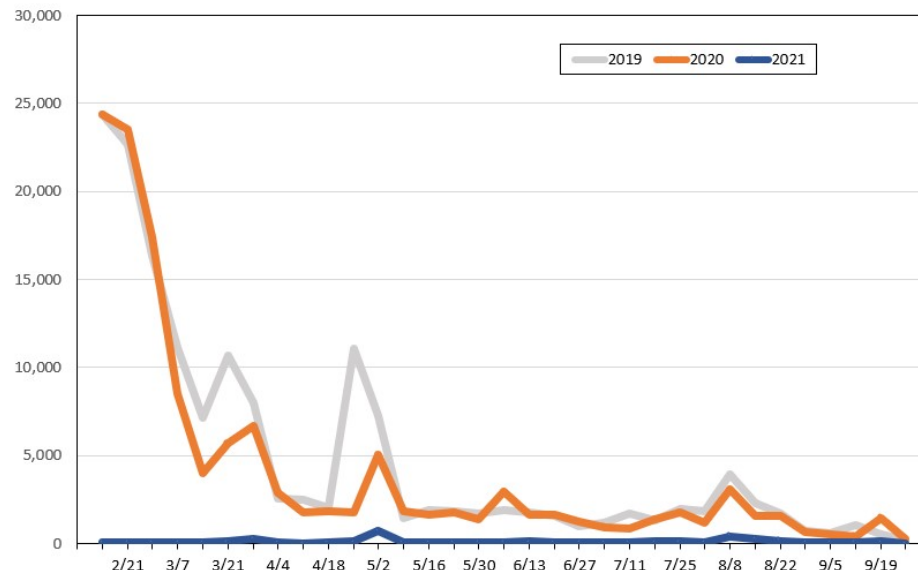
Update: Feb 2, 2021

**Travel Agency Weekly Bookings for Future Travel to Hawai'i as of February 2, 2021**  
U.S.



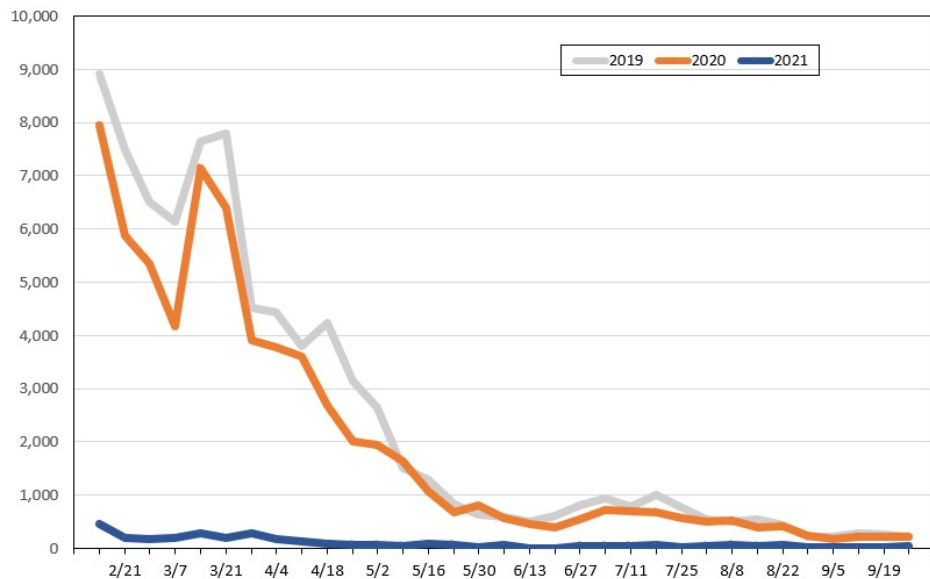
Source: Global Agency Pro, as of February 2, 2021

**Travel Agency Weekly Bookings for Future Travel to Hawai'i as of February 2, 2021**  
Japan



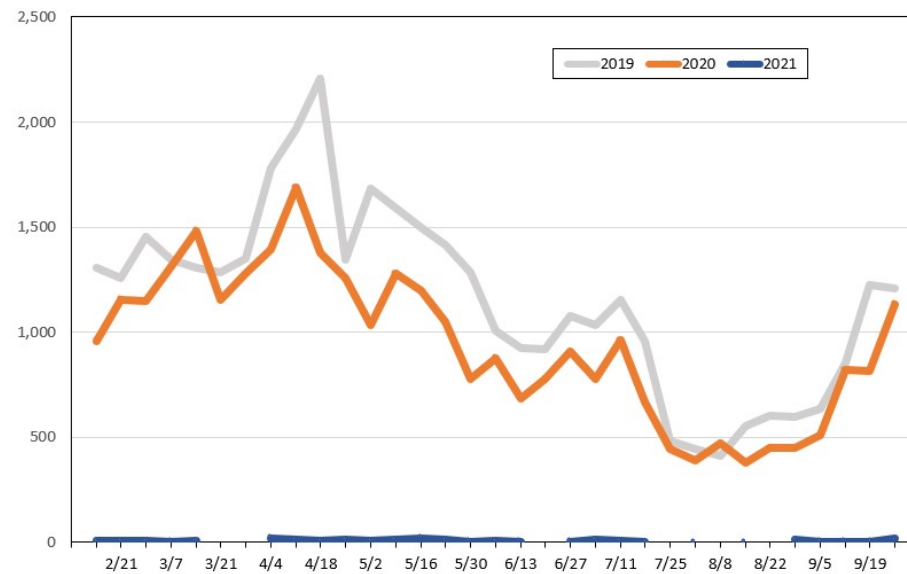
Source: Global Agency Pro, as of February 2, 2021

**Travel Agency Weekly Bookings for Future Travel to Hawai'i as of February 2, 2021**  
Canada



Source: Global Agency Pro, as of February 2, 2021

**Travel Agency Weekly Bookings for Future Travel to Hawai'i as of February 2, 2021**  
Australia



Source: Global Agency Pro, as of February 2, 2021