

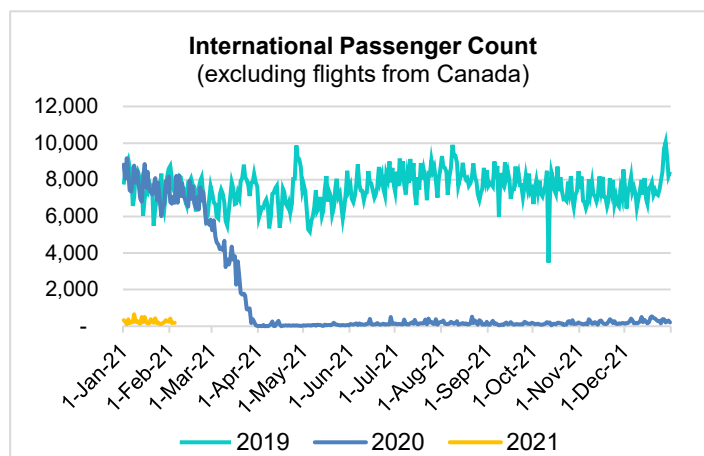
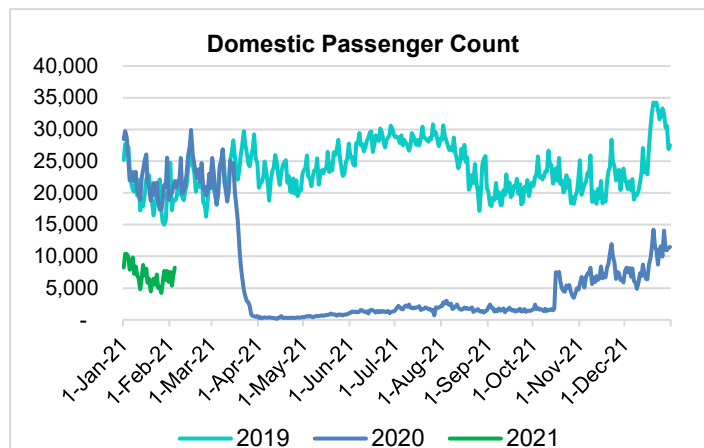
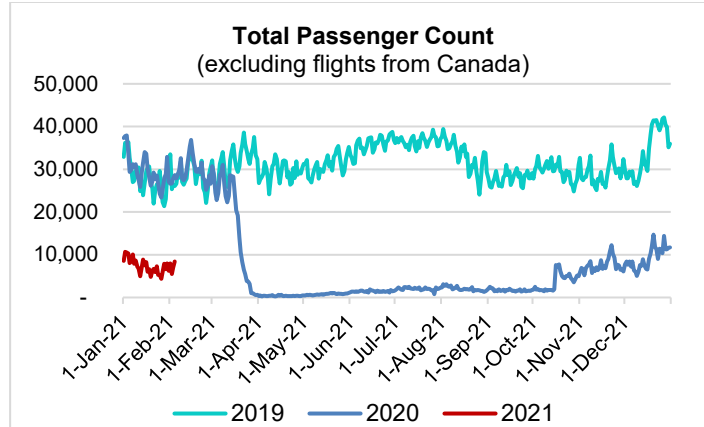
HTA COVID-19 UPDATE

(Issued: 2/5/21 @ 4:30pm)

| Reason for Trip by Arrival Airport - Transpacific Screened Passengers as of 02/04/21 | Honolulu (HNL) | Kahului (OGG) | Kona (KOA) | Lihue (LIH) | Grand Total |
|--|----------------|---------------|--------------|-------------|--------------|
| Airline Crew | 419 | 151 | 94 | 14 | 678 |
| Connecting Flight (Transit) | 272 | 7 | 0 | 0 | 279 |
| Corporate Meeting | 11 | 2 | 3 | 0 | 16 |
| Essential Worker | 78 | 24 | 16 | 4 | 122 |
| Honeymoon | 10 | 3 | 0 | 0 | 13 |
| Incentive Trip | 2 | 0 | 0 | 0 | 2 |
| Intended Resident | 111 | 17 | 24 | 11 | 163 |
| Military or Federal Government | 89 | 0 | 0 | 1 | 90 |
| Other | 63 | 19 | 10 | 1 | 93 |
| Other Business | 56 | 40 | 25 | 6 | 127 |
| Pleasure/Vacation | 2,368 | 2,130 | 911 | 63 | 5,472 |
| Returning Resident | 669 | 127 | 105 | 24 | 925 |
| Sports Event | 11 | 0 | 0 | 0 | 11 |
| To Attend School | 14 | 2 | 3 | 0 | 19 |
| To Get Married | 5 | 5 | 0 | 0 | 10 |
| Visiting Friends or Relatives | 890 | 273 | 215 | 13 | 1,391 |
| Grand Total | 5,068 | 2,800 | 1,406 | 137 | 9,411 |

Source: Safe Travels program developed by the State of Hawaii Office of Enterprise Technology Services

Note: The data is preliminary and subject to change



Daily Passenger Count Table

| 02/04/2021 | Domestic | International | Total |
|------------------|----------|---------------|-------|
| Oahu | 4326 | 195 | 4521 |
| Maui | 2510 | | 2510 |
| Island of Hawaii | 1246 | | 1246 |
| Kauai | 106 | | 106 |
| State | 8188 | 195 | 8383 |

Novel Coronavirus in Hawaii

COVID-19 Positive Cases

Cumulative totals as of 12:00pm on February 5, 2021

| Total Confirmed Cases | 26,286* (101 new) |
|---------------------------|-------------------|
| Hawaii | 2,187 |
| Kauai | 178 |
| Lanai | 108 |
| Maui | 1833† |
| Molokai | 25 |
| Oahu | 21,204 |
| Out of State | 751 |
| Pending | 0 |
| Required Hospitalization | 1732‡ |
| Hawaii Deaths | 416 |
| Cases in the past 14 days | 1,342* |

Footnotes for COVID-19 Cases

* As a result of updated information, two cases on Oahu were recategorized to the Island of Hawaii, one case on Maui was recategorized to Oahu, and one case on Maui and one case on Oahu were removed from the counts.

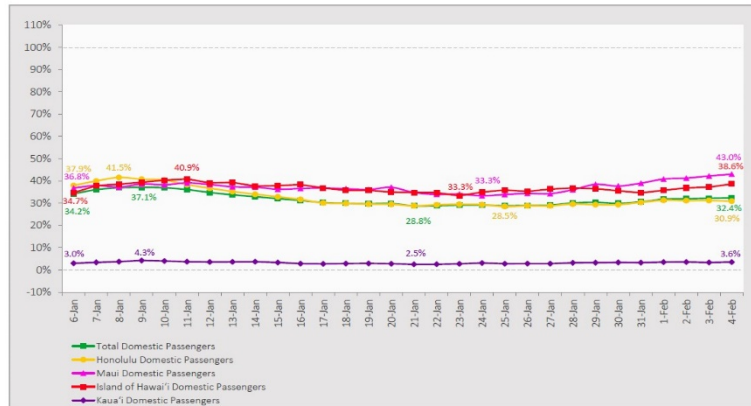
**Using cases reported in the past 14 days provides a rough approximation of the number of cases currently meeting criteria for isolation. This proxy number for "active cases" resolves classification issues for cases unable to be reached or who are out of jurisdiction, for whom precise release from isolation date may not be possible to determine. It is also not influenced by lags in data entry. (This total does not include Hawaii residents diagnosed outside of Hawaii)

†One case is a Lanai resident whose exposure is on Maui Island and who will be remaining on Maui Island for the interim.

‡Includes Hawaii residents hospitalized out of state.

7-Day Domestic by Island Moving Average Daily Passenger Volume

2021 Volume as Percentage of 2020 Volume
Through February 4, 2021



Source: HVCB analysis based on data from DBEDT
Note: Passenger volume figures include both visitors and residents.

Domestic by Island Month-to-Date and Year-to-Date Daily Passenger Volume

2021 Volume versus 2020 Volume
Through February 4, 2021

February 2021 (Month-to-Date through February 4)

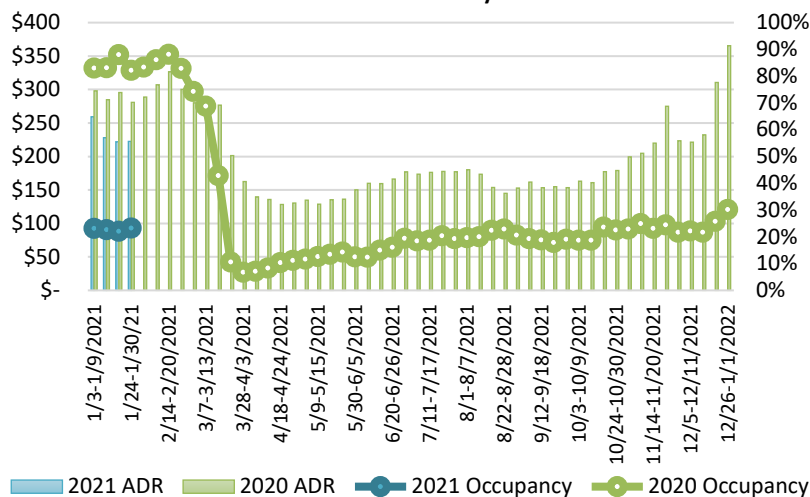
| | 2021 | 2020 | Volume Change | Percent Change |
|-------------------|--------|--------|---------------|----------------|
| Honolulu | 14,472 | 45,528 | -31,056 | -68.2% |
| Maui County | 9,025 | 20,990 | -11,965 | -57.0% |
| Island of Hawai'i | 4,163 | 10,476 | -6,313 | -60.3% |
| Kaua'i | 257 | 7,322 | -7,065 | -96.5% |
| Total | 27,917 | 84,316 | -56,399 | -66.9% |

2021 (Year-to-Date through February 4)

| | 2021 | 2020 | Volume Change | Percent Change |
|-------------------|---------|---------|---------------|----------------|
| Honolulu | 139,242 | 430,354 | -291,112 | -67.6% |
| Maui County | 71,761 | 192,462 | -120,701 | -62.7% |
| Island of Hawai'i | 34,084 | 94,340 | -60,256 | -63.9% |
| Kaua'i | 2,094 | 65,453 | -63,359 | -96.8% |
| Total | 247,181 | 782,609 | -535,428 | -68.4% |

Source: HVCB analysis based on data from DBEDT
Note: Passenger volume figures include both visitors and residents. Total includes other international passengers.

State of Hawai'i Hotel Performance by Week - 2021 vs 2020



Source: STR, Inc. © Copyright 2021 Hawai'i Tourism Authority

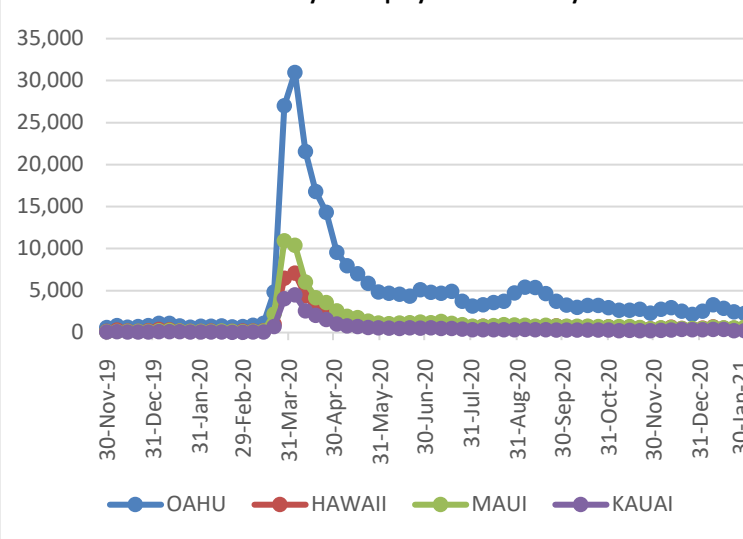
Hawaii Hotel Performance Info:

For the week of January 24 – January 30, 2021

| | Occupancy | ADR | RevPAR |
|------------------|-----------|-----------|----------|
| State of Hawaii | 23.3% | \$ 222.55 | \$ 51.85 |
| Oahu | 22.8% | \$ 159.49 | \$ 36.32 |
| Maui County | 20.1% | \$ 379.48 | \$ 76.09 |
| Kauai County | 24.5% | \$ 169.75 | \$ 41.53 |
| Island of Hawaii | 31.0% | \$ 238.57 | \$ 74.02 |

Statistics based on participating properties and may vary by week.

2021 Initial Weekly Unemployment Claims by Island



Weekly Unemployment Initial Claims: January 30, 2021

| | |
|---|-------|
| State of Hawaii | 3,823 |
| C&C of Oahu | 2,279 |
| Hawaii County | 434 |
| Maui County | 622 |
| Kauai County | 221 |
| Agent (filed in Hawaii against another state) | 267 |

News Highlights

February 5, 2021

Hawaii News Now: [State now has 30 sites distributing COVID vaccine to kupuna, essential workers](#)

Pacific Business News: [Future site of Hula Bowl up in the air between Hawaii, Las Vegas](#)

Big Island Now: ['Fight COVID With COVID' Blood Drive Coming to Kona](#)

The Maui News: [Visitor numbers continue to climb](#)

The Garden Island: [County announces 1 new COVID-19 case Thursday](#)

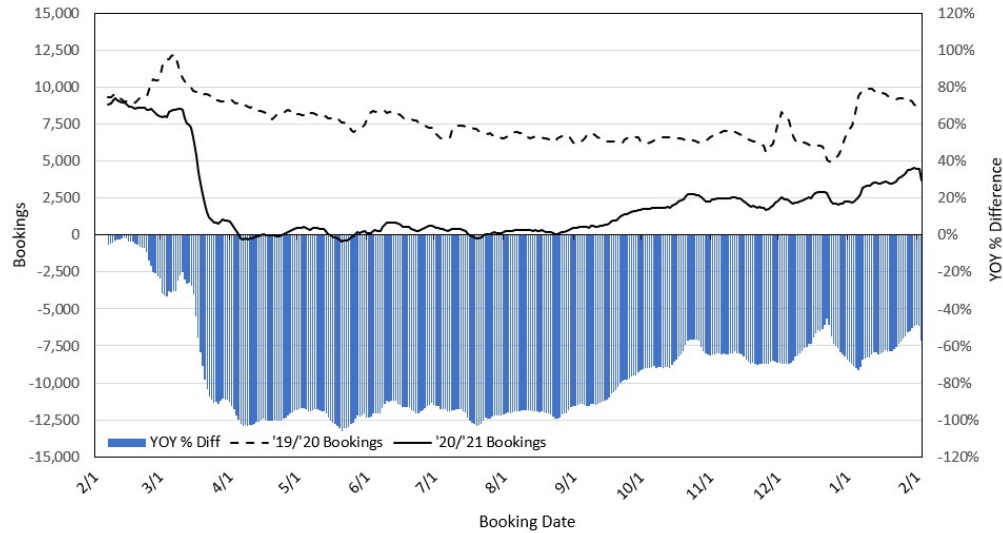
Hawaii Tribune-Herald: [Cluster of COVID-19 cases under investigation on Big Island](#)

Travel Pulse: [Study Finds Traveler Safety Concerns Will Diminish by Summer](#)

SF Gate: ['A slap in the face:' Outcry over Hawaii travel influencer spotlights issues with Instagram tourism](#)

Travel + Leisure: [Actor Don Cheadle Shares Why He and His Family Chose to Temporarily Relocate to Hawaii](#)

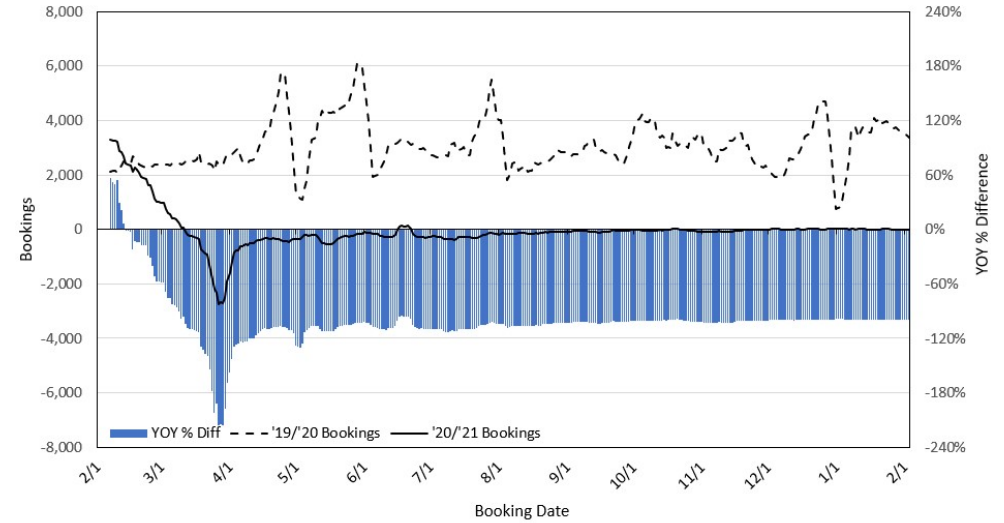
Travel Agency Bookings to Hawaii for Future Arrivals* Based on a 7-day Moving Average, as of February 3, 2021 U.S.



*Future Arrivals refers to all arrivals that are 'future' relative to the referenced booking date.
Source: Global Agency Pro

Update: Feb 3, 2021

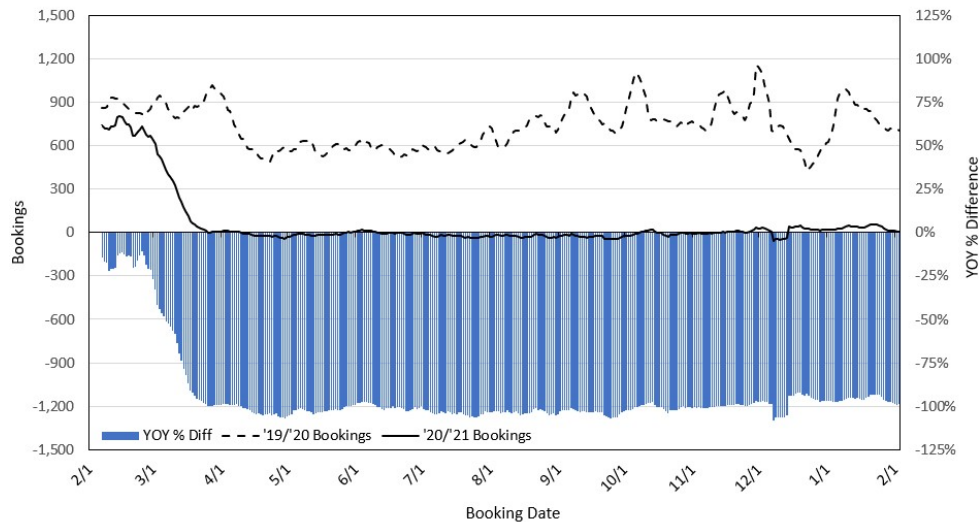
Travel Agency Bookings to Hawaii for Future Arrivals* Based on a 7-day Moving Average, as of February 3, 2021 Japan



*Future Arrivals refers to all arrivals that are 'future' relative to the referenced booking date.
Source: Global Agency Pro

Update: Feb 3, 2021

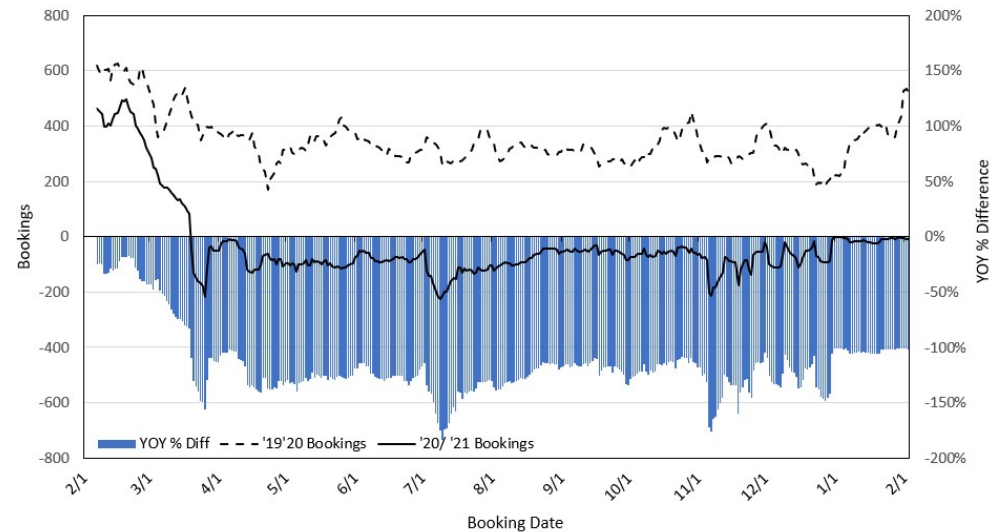
Travel Agency Bookings to Hawaii for Future Arrivals* Based on a 7-day Moving Average, as of February 3, 2021 Canada



*Future Arrivals refers to all arrivals that are 'future' relative to the referenced booking date.
Source: Global Agency Pro

Update: Feb 3, 2021

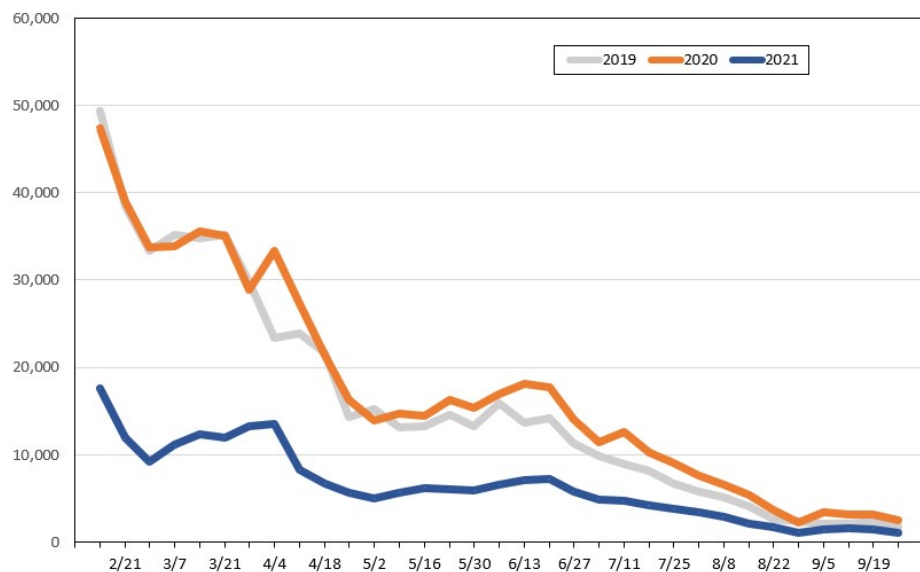
Travel Agency Bookings to Hawaii for Future Arrivals* Based on a 7-day Moving Average, as of February 3, 2021 Australia



*Future Arrivals refers to all arrivals that are 'future' relative to the referenced booking date.
Source: Global Agency Pro

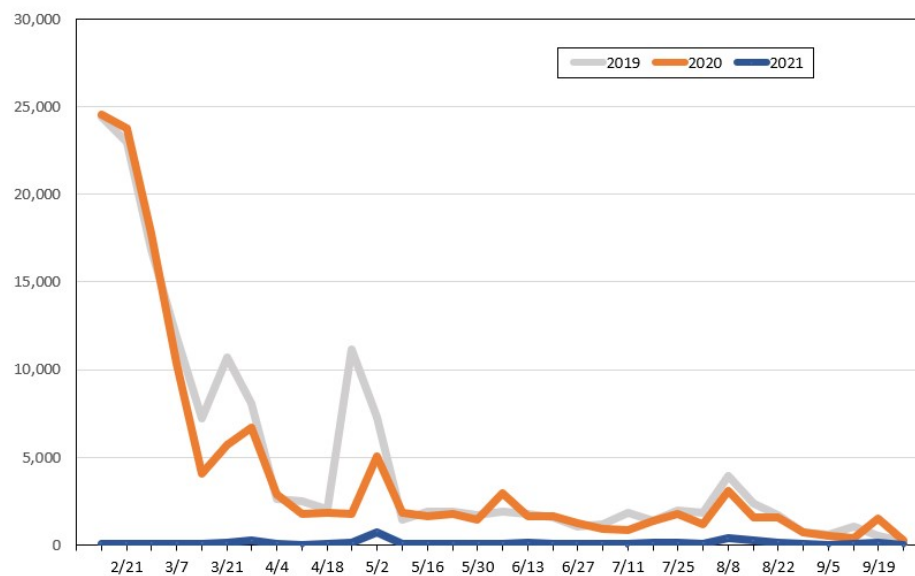
Update: Feb 3, 2021

Travel Agency Weekly Bookings for Future Travel to Hawai'i as of February 3, 2021
U.S.



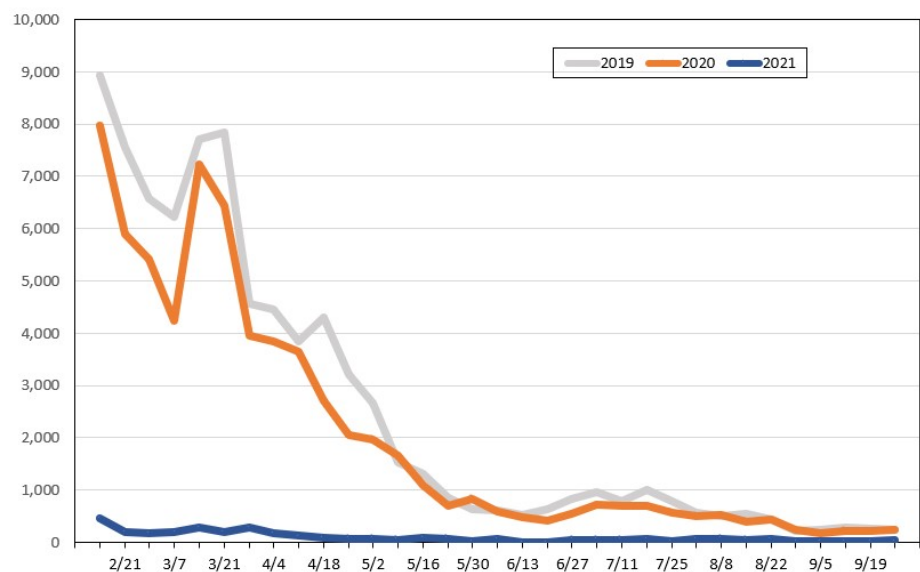
Source: Global Agency Pro, as of February 3, 2021

Travel Agency Weekly Bookings for Future Travel to Hawai'i as of February 3, 2021
Japan



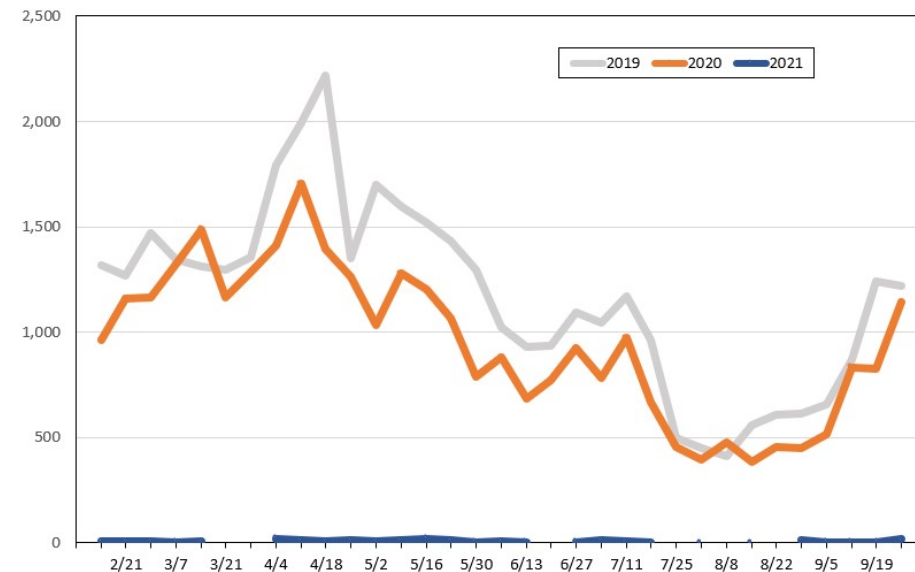
Source: Global Agency Pro, as of February 3, 2021

Travel Agency Weekly Bookings for Future Travel to Hawai'i as of February 3, 2021
Canada



Source: Global Agency Pro, as of February 3, 2021

Travel Agency Weekly Bookings for Future Travel to Hawai'i as of February 3, 2021
Australia



Source: Global Agency Pro, as of February 3, 2021