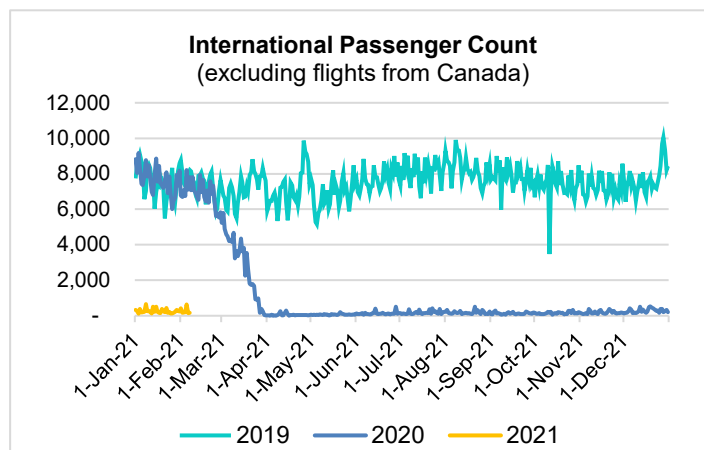
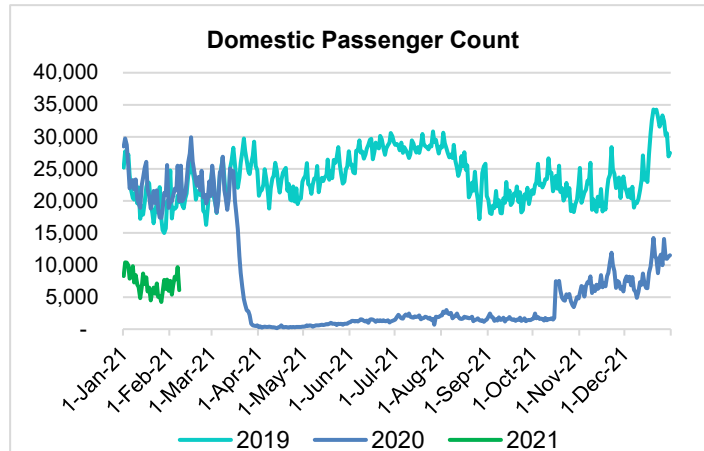
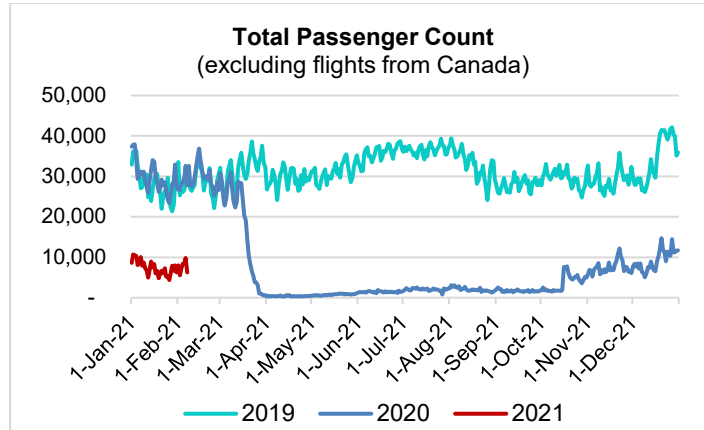


HTA COVID-19 UPDATE

(Issued: 2/8/21 @ 4:30pm)

Reason for Trip by Arrival Airport - Transpacific Screened Passengers as of 02/07/21	Honolulu (HNL)	Kahului (OGG)	Kona (KOA)	Lihue (LIH)	Grand Total
Airline Crew	378	185	98	6	667
Connecting Flight (Transit)	248	4	3	0	255
Corporate Meeting	2	0	0	0	2
Essential Worker	126	21	5	5	157
Honeymoon	12	10	1	0	23
Incentive Trip	1	0	0	0	1
Intended Resident	71	13	17	8	109
Military or Federal Government	111	1	0	0	112
Other	45	9	13	2	69
Other Business	104	35	21	2	162
Pleasure/Vacation	1,522	1,768	711	13	4,014
Returning Resident	599	147	121	9	876
Sports Event	1	0	0	0	1
To Attend School	6	0	0	0	6
To Get Married	2	2	1	0	5
Visiting Friends or Relatives	440	114	146	11	711
Grand Total	3,668	2,309	1,137	56	7,170
Source: Safe Travels program developed by the State of Hawaii Office of Enterprise Technology Services					
Note: The data is preliminary and subject to change					



Daily Passenger Count Table

02/07/2021	Domestic	International	Total
Oahu	3130	163	3293
Maui	2014		2014
Island of Hawaii	902		902
Kauai	48		48
State	6094	163	6257

Novel Coronavirus in Hawaii

COVID-19 Positive Cases

Cumulative totals as of 12:00pm on February 8, 2021

Total Confirmed Cases	26,500* (33 new)
Hawaii	2,198
Kauai	179
Lanai	109
Maui	1870†
Molokai	25
Oahu	21,361
Out of State	758
Pending	0
Required Hospitalization	1751‡
Hawaii Deaths	418
Cases in the past 14 days	1,165*

Footnotes for COVID-19 Cases

* As a result of updated information, two cases on Oahu were recategorized to the Island of Hawaii, one case on Maui was recategorized to Oahu, and one case on Maui and one case on Oahu were removed from the counts.

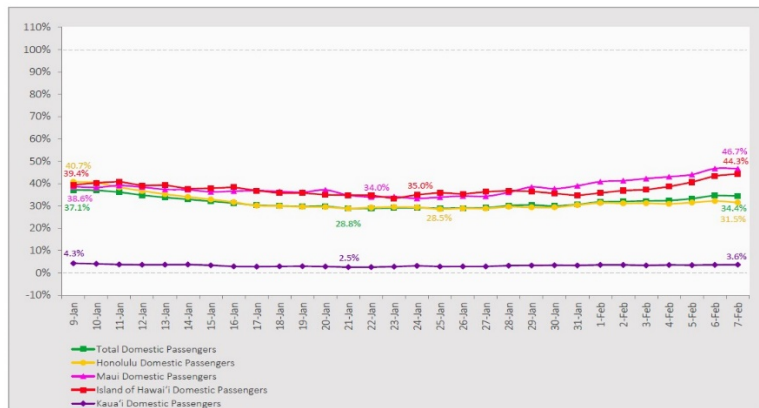
**Using cases reported in the past 14 days provides a rough approximation of the number of cases currently meeting criteria for isolation. This proxy number for "active cases" resolves classification issues for cases unable to be reached or who are out of jurisdiction, for whom precise release from isolation date may not be possible to determine. It is also not influenced by lags in data entry. (This total does not include Hawaii residents diagnosed outside of Hawaii)

†One case is a Lanai resident whose exposure is on Maui Island and who will be remaining on Maui Island for the interim.

‡Includes Hawaii residents hospitalized out of state.

7-Day Domestic by Island Moving Average Daily Passenger Volume

2021 Volume as Percentage of 2020 Volume
Through February 7, 2021



Source: HVCB analysis based on data from DBEDT
Note: Passenger volume figures include both visitors and residents.

Domestic by Island Month-to-Date and Year-to-Date Daily Passenger Volume

2021 Volume versus 2020 Volume
Through February 7, 2021

February 2021 (Month-to-Date through February 7)

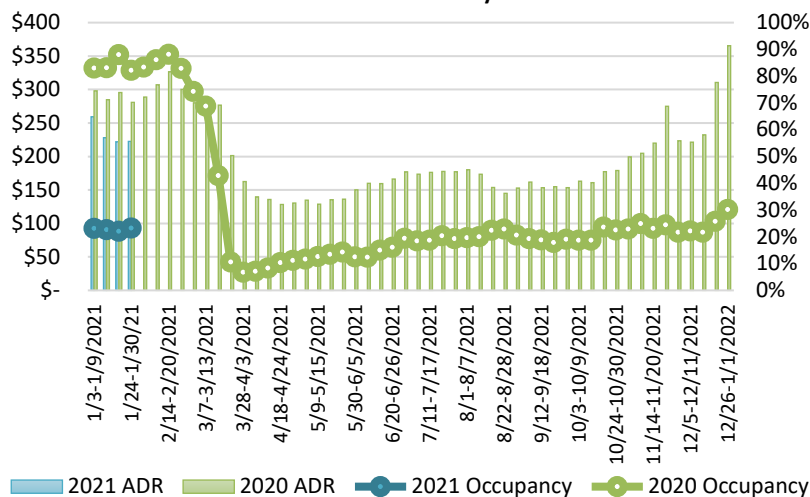
	2021	2020	Volume Change	Percent Change
Honolulu	25,544	80,308	-54,764	-68.2%
Maui County	17,420	37,271	-19,851	-53.3%
Island of Hawai'i	8,026	17,978	-9,952	-55.4%
Kaua'i	481	13,133	-12,652	-96.3%
Total	51,471	148,690	-97,219	-65.4%

2021 (Year-to-Date through February 7)

	2021	2020	Volume Change	Percent Change
Honolulu	150,314	465,134	-314,820	-67.7%
Maui County	80,156	208,743	-128,587	-61.6%
Island of Hawai'i	37,947	101,842	-63,895	-62.7%
Kaua'i	2,318	71,264	-68,946	-96.7%
Total	270,735	846,983	-576,248	-68.0%

Source: HVCB analysis based on data from DBEDT
Note: Passenger volume figures include both visitors and residents. Total includes other international passengers.

State of Hawai'i Hotel Performance by Week - 2021 vs 2020



Source: STR, Inc. © Copyright 2021 Hawai'i Tourism Authority

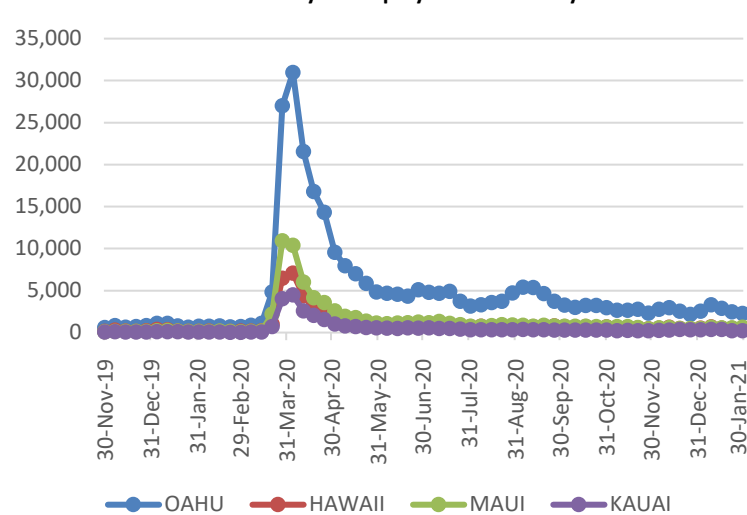
Hawaii Hotel Performance Info:

For the week of January 24 – January 30, 2021

	Occupancy	ADR	RevPAR
State of Hawaii	23.3%	\$ 222.55	\$ 51.85
Oahu	22.8%	\$ 159.49	\$ 36.32
Maui County	20.1%	\$ 379.48	\$ 76.09
Kauai County	24.5%	\$ 169.75	\$ 41.53
Island of Hawaii	31.0%	\$ 238.57	\$ 74.02

Statistics based on participating properties and may vary by week.

2021 Initial Weekly Unemployment Claims by Island



Weekly Unemployment Initial Claims: January 30, 2021

State of Hawaii	3,823
C&C of Oahu	2,279
Hawaii County	434
Maui County	622
Kauai County	221
Agent (filed in Hawaii against another state)	267

News Highlights

February 8, 2021

Honolulu Star Advertiser: [Around the globe, coronavirus cancels spring travel for millions](#)

KHON2: [Lt. Gov. wants to push up vaccination of 65 and older as COVID-19 variants spread across mainland](#)

KITV4: [State rolls out pre-travel testing for travelers from Korea](#)

Honolulu Civil Beat: [Other States Have Opened Vaccinations To Those As Young As 65. Why Not Hawaii?](#)

West Hawaii Today: [Big Island COVID19 case count increase by 7](#)

Big Island Now: [Pandemic Travel Toll Not Impacting Hawaii Experience, Survey Says](#)

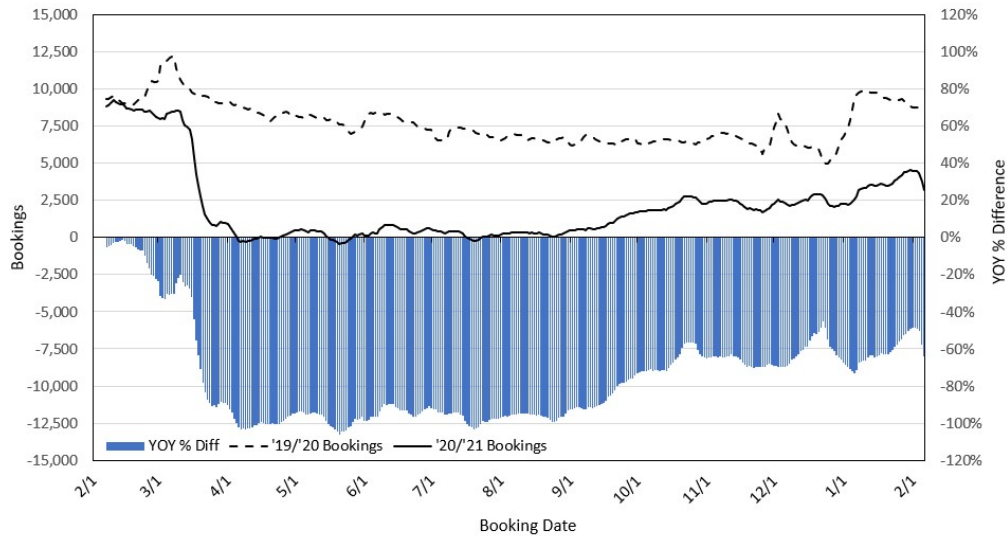
eTurbo News: [Hawaii Tourism's Action Plan for Kauai](#)

Travel Pulse: [COVID-19 Impacting US Spring Break 2021 Outlook](#)

Travel Weekly: [Airbnb creates tool for hosts to confirm guests' Covid status](#)

Phocus Wire: [What COVID-induced changes in hospitality are here to stay?](#)

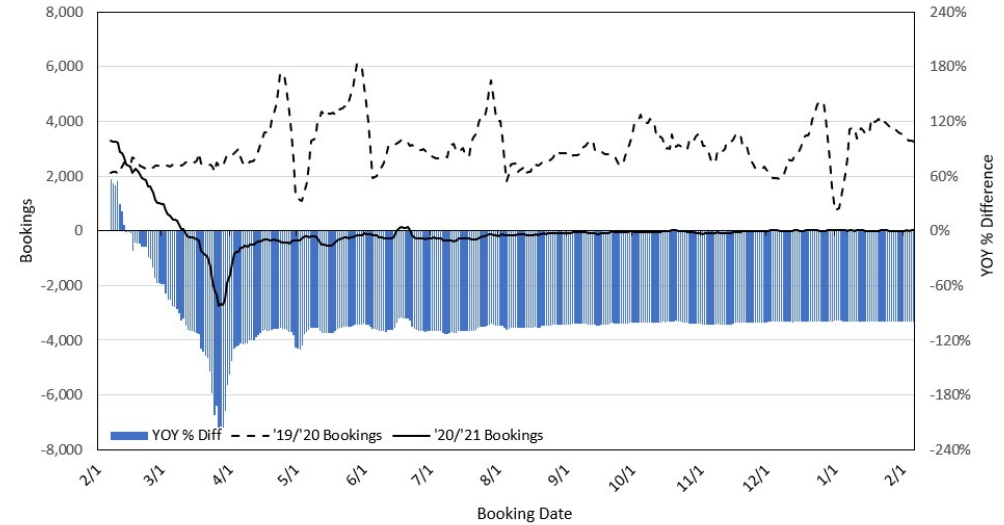
Travel Agency Bookings to Hawaii for Future Arrivals* Based on a 7-day Moving Average, as of February 6, 2021 U.S.



*Future Arrivals refers to all arrivals that are 'future' relative to the referenced booking date.
Source: Global Agency Pro

Update: Feb 6, 2021

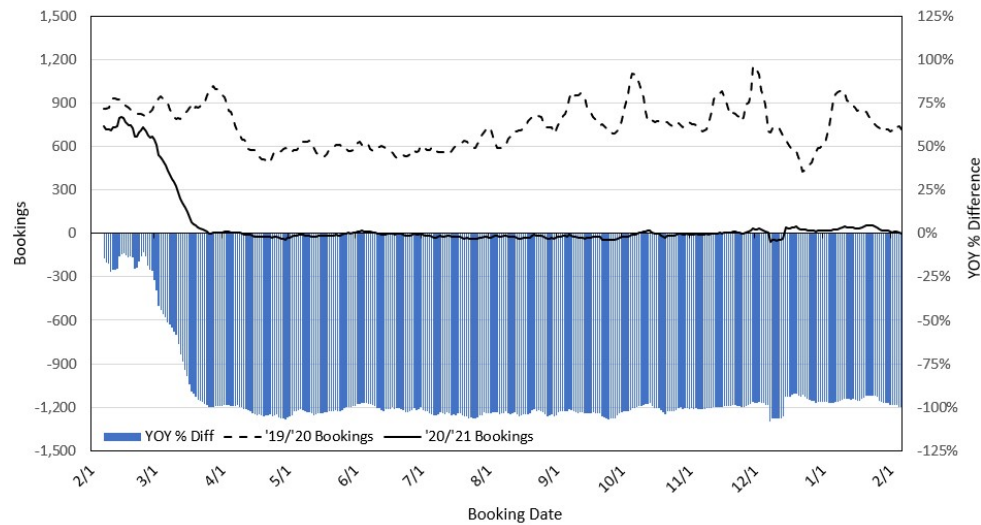
Travel Agency Bookings to Hawaii for Future Arrivals* Based on a 7-day Moving Average, as of February 6, 2021 Japan



*Future Arrivals refers to all arrivals that are 'future' relative to the referenced booking date.
Source: Global Agency Pro

Update: Feb 6, 2021

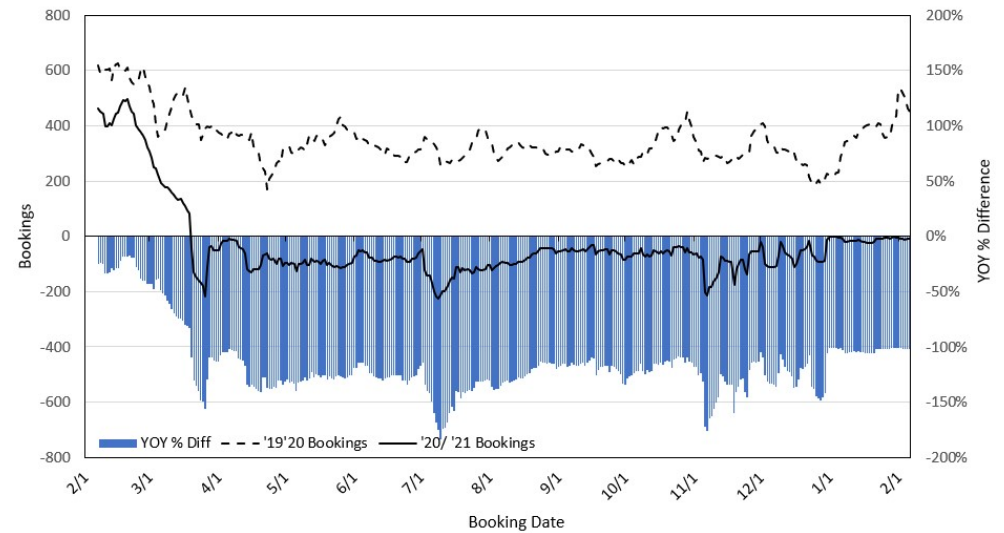
Travel Agency Bookings to Hawaii for Future Arrivals* Based on a 7-day Moving Average, as of February 6, 2021 Canada



*Future Arrivals refers to all arrivals that are 'future' relative to the referenced booking date.
Source: Global Agency Pro

Update: Feb 6, 2021

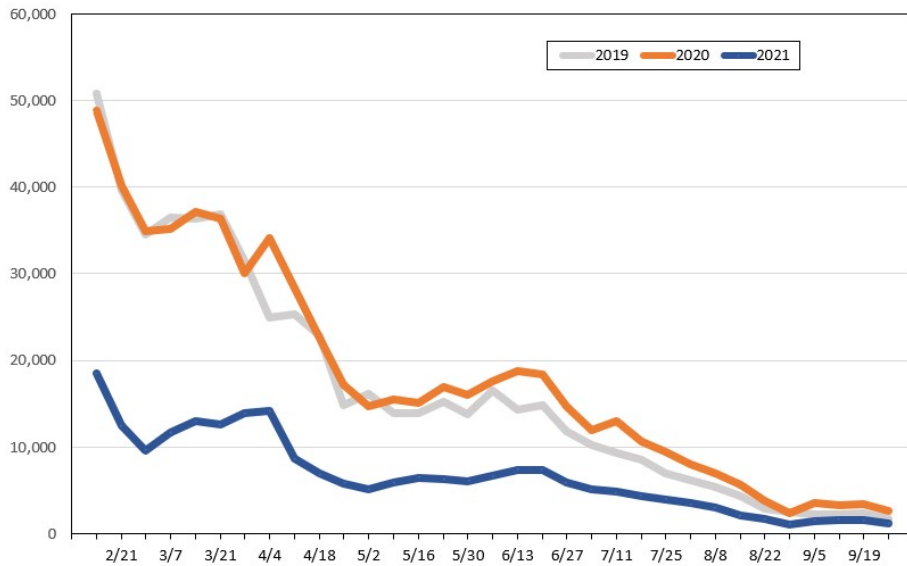
Travel Agency Bookings to Hawaii for Future Arrivals* Based on a 7-day Moving Average, as of February 6, 2021 Australia



*Future Arrivals refers to all arrivals that are 'future' relative to the referenced booking date.
Source: Global Agency Pro

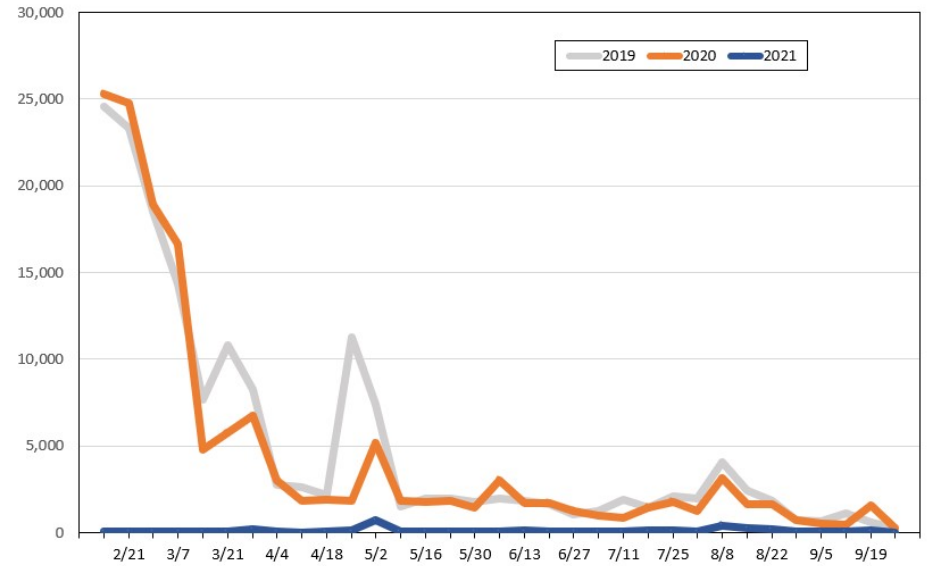
Update: Feb 6, 2021

Travel Agency Weekly Bookings for Future Travel to Hawai'i as of February 6, 2021
U.S.



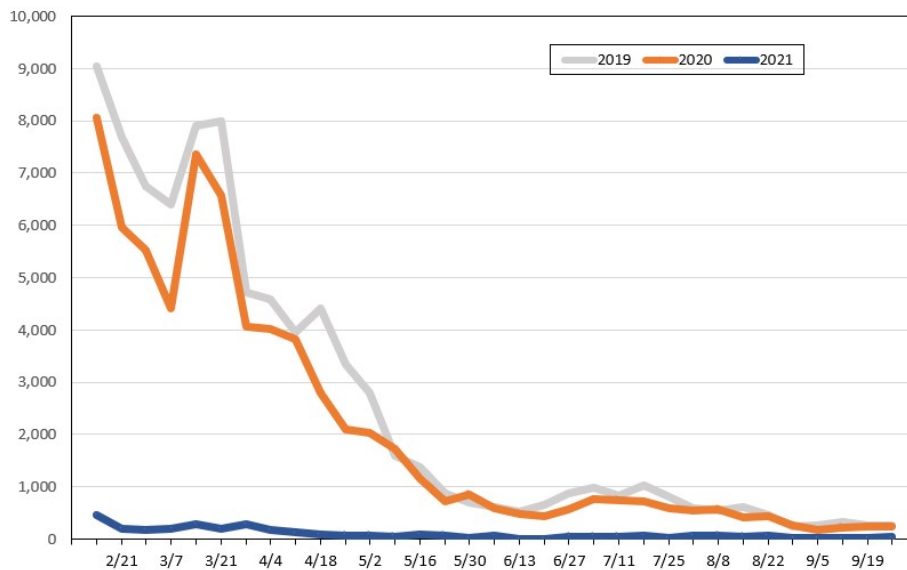
Source: Global Agency Pro, as of February 6, 2021

Travel Agency Weekly Bookings for Future Travel to Hawai'i as of February 6, 2021
Japan



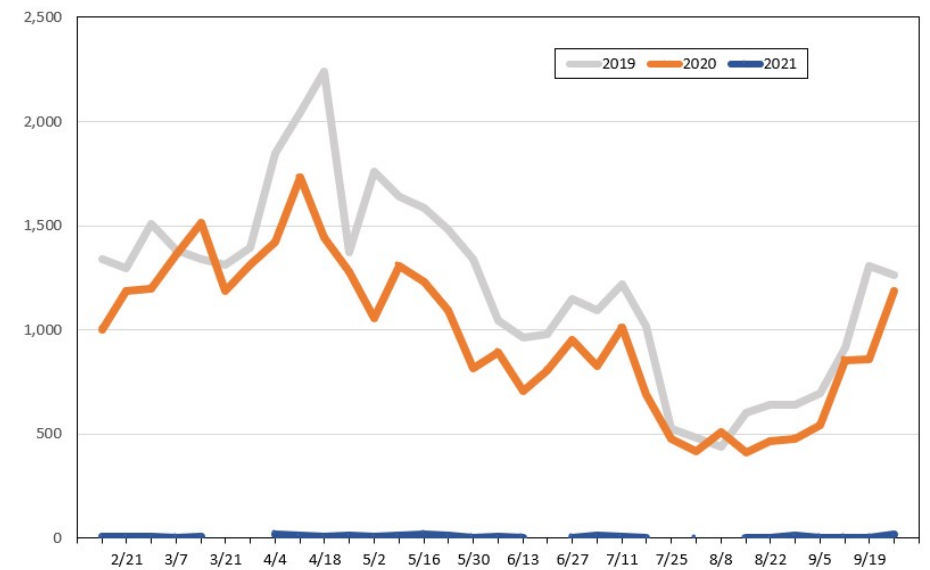
Source: Global Agency Pro, as of February 6, 2021

Travel Agency Weekly Bookings for Future Travel to Hawai'i as of February 6, 2021
Canada



Source: Global Agency Pro, as of February 6, 2021

Travel Agency Weekly Bookings for Future Travel to Hawai'i as of February 6, 2021
Australia



Source: Global Agency Pro, as of February 6, 2021