

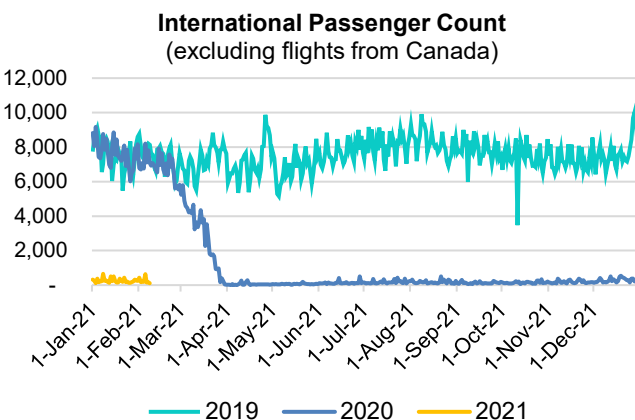
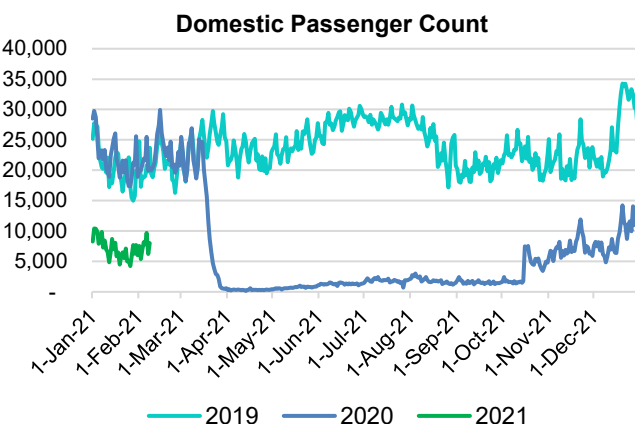
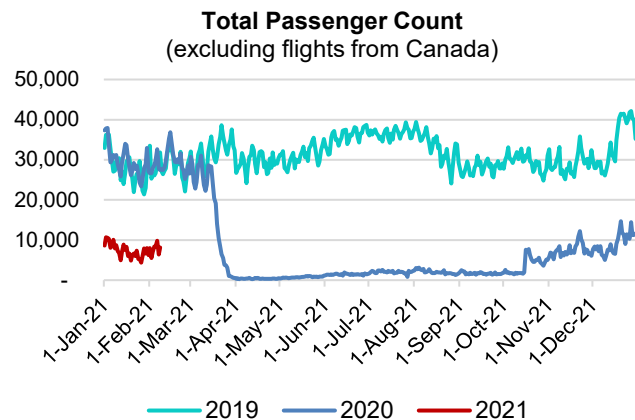
# HTA COVID-19 UPDATE

(Issued: 2/9/21 @ 4:30pm)

Reason for Trip by Arrival Airport - Transpacific Screened Passengers as of 02/08/21	Honolulu (HNL)	Kahului (OGG)	Kona (KOA)	Lihue (LIH)	Grand Total
Airline Crew	369	176	71	6	622
Connecting Flight (Transit)	289	33	1	2	325
Corporate Meeting	3	10	1	0	14
Essential Worker	146	43	19	2	210
Honeymoon	6	8	5	0	19
Incentive Trip	0	0	1	0	1
Intended Resident	84	12	13	4	113
Military or Federal Government	121	2	2	0	125
Other	59	17	11	0	87
Other Business	64	36	11	3	114
Pleasure/Vacation	1,708	2,136	800	25	4,669
Returning Resident	1,212	185	101	9	1,507
To Attend School	23	0	1	0	24
To Get Married	10	4	0	2	16
Transit	0	1	0	0	1
Visiting Friends or Relatives	672	157	189	9	1,027
<b>Grand Total</b>	<b>4,766</b>	<b>2,820</b>	<b>1,226</b>	<b>62</b>	<b>8,874</b>

**Source:** Safe Travels program developed by the State of Hawaii Office of Enterprise Technology Services

**Note:** The data is preliminary and subject to change



## Daily Passenger Count Table

02/08/2021	Domestic	International	Total
Oahu	4398	109	4507
Maui	2480		2480
Island of Hawaii	1085		1085
Kauai	53		53
State	8016	109	8125

## Novel Coronavirus in Hawaii

### COVID-19 Positive Cases

Cumulative totals as of 12:00pm on February 9, 2021

Total Confirmed Cases	26,531* (37 new)
Hawaii	2,201
Kauai	179
Lanai	109
Maui	1873†
Molokai	25
Oahu	21,383
Out of State	761
Pending	0
Required Hospitalization	1752‡
Hawaii Deaths	418
Cases in the past 14 days	1,127*

### Footnotes for COVID-19 Cases

\*As a result of updated information, two cases on Maui and four cases on Oahu were removed from the counts.

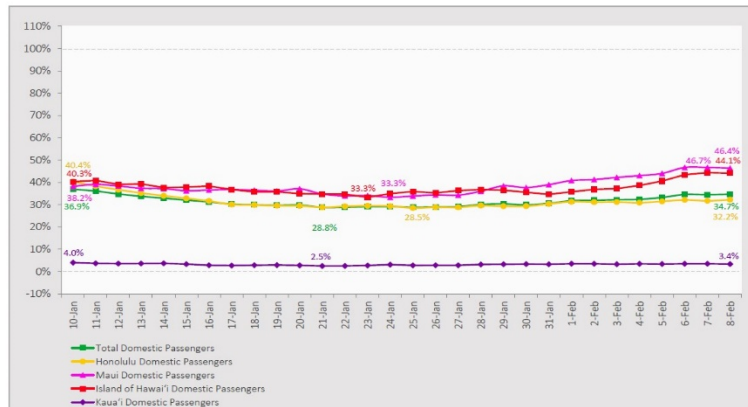
\*\*Using cases reported in the past 14 days provides a rough approximation of the number of cases currently meeting criteria for isolation. This proxy number for "active cases" resolves classification issues for cases unable to be reached or who are out of jurisdiction, for whom precise release from isolation date may not be possible to determine. It is also not influenced by lags in data entry. (This total does not include Hawaii residents diagnosed outside of Hawaii)

†One case is a Lanai resident whose exposure is on Maui Island and who will be remaining on Maui Island for the interim.

‡Includes Hawaii residents hospitalized out of state.

## 7-Day Domestic by Island Moving Average Daily Passenger Volume

2021 Volume as Percentage of 2020 Volume  
Through February 8, 2021



Source: HVCB analysis based on data from DBEDT  
Note: Passenger volume figures include both visitors and residents.

## Domestic by Island Month-to-Date and Year-to-Date Daily Passenger Volume

2021 Volume versus 2020 Volume  
Through February 8, 2021

February 2021 (Month-to-Date through February 8)

	2021	2020	Volume Change	Percent Change
Honolulu	30,104	92,823	-62,719	-67.6%
Maui County	19,900	43,998	-24,098	-54.8%
Island of Hawai'i	9,111	21,651	-12,540	-57.9%
Kaua'i	520	15,740	-15,220	-96.7%
<b>Total</b>	<b>59,635</b>	<b>174,212</b>	<b>-114,577</b>	<b>-65.8%</b>

2021 (Year-to-Date through February 8)

	2021	2020	Volume Change	Percent Change
Honolulu	154,874	477,649	-322,775	-67.6%
Maui County	82,636	215,470	-132,834	-61.6%
Island of Hawai'i	39,032	105,515	-66,483	-63.0%
Kaua'i	2,357	73,871	-71,514	-96.8%
<b>Total</b>	<b>278,899</b>	<b>872,505</b>	<b>-593,606</b>	<b>-68.0%</b>

Source: HVCB analysis based on data from DBEDT  
Note: Passenger volume figures include both visitors and residents. Total includes other international passengers.

## News Highlights

February 9, 2021

**Hawaii News Now:** [CVS moves on to next phase: Vaccinating the public at select Longs Drugs stores](#)

**Honolulu Civil Beat:** [Stabilizing Or Stalling? State Officials Explain Why Hawaii's Recovery Plan Will Take 2 Years](#)

**The Maui News:** [Maui's vaccination clinics to begin first doses again](#)

**West Hawaii Today:** [Gov. Ige urges caution as new virus strains are found in Hawaii](#)

**Observer:** [When Will the Pandemic End? This Vaccine Data-Backed Outlook Will Make You Cry](#)

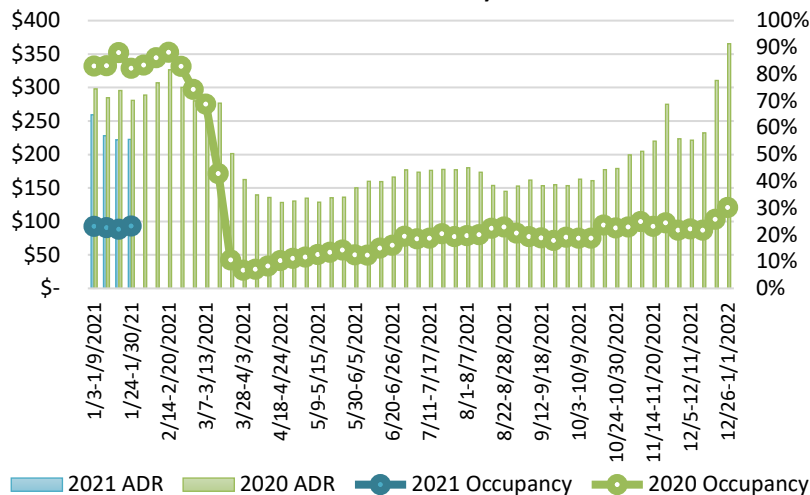
**TravelAge West:** [WTTC: Governments Should Shift 'High-Risk' Label From Countries to Individuals](#)

**Travel Pulse:** [Travel Advisors React to Travel Companies Mandating COVID-19 Vaccine](#)

**Travel Weekly:** [ASTA demands the CDC issue guidance to ease confusion](#)

**CNBC:** [Vacancies and vaccines: How travelers could benefit from hotel industry struggles](#)

## State of Hawai'i Hotel Performance by Week - 2021 vs 2020



Source: STR, Inc. © Copyright 2021 Hawaii's Tourism Authority

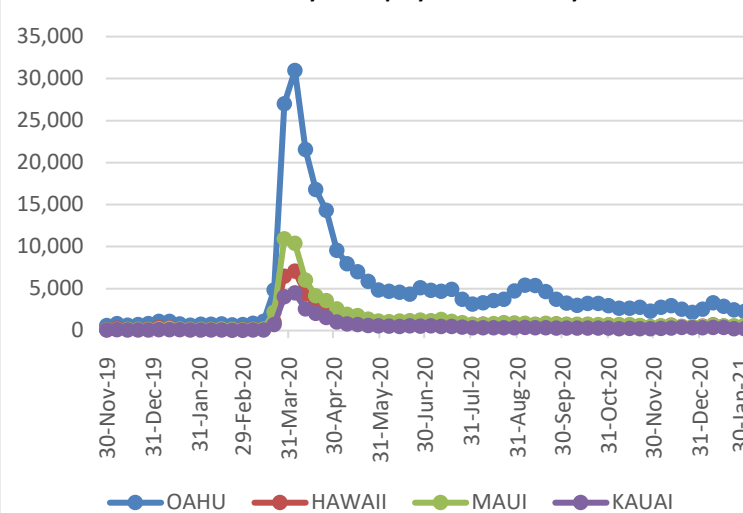
## Hawaii Hotel Performance Info:

For the week of January 24 – January 30, 2021

	Occupancy	ADR	RevPAR
<b>State of Hawaii</b>	23.3%	\$ 222.55	\$ 51.85
<b>Oahu</b>	22.8%	\$ 159.49	\$ 36.32
<b>Maui County</b>	20.1%	\$ 379.48	\$ 76.09
<b>Kauai County</b>	24.5%	\$ 169.75	\$ 41.53
<b>Island of Hawaii</b>	31.0%	\$ 238.57	\$ 74.02

Statistics based on participating properties and may vary by week.

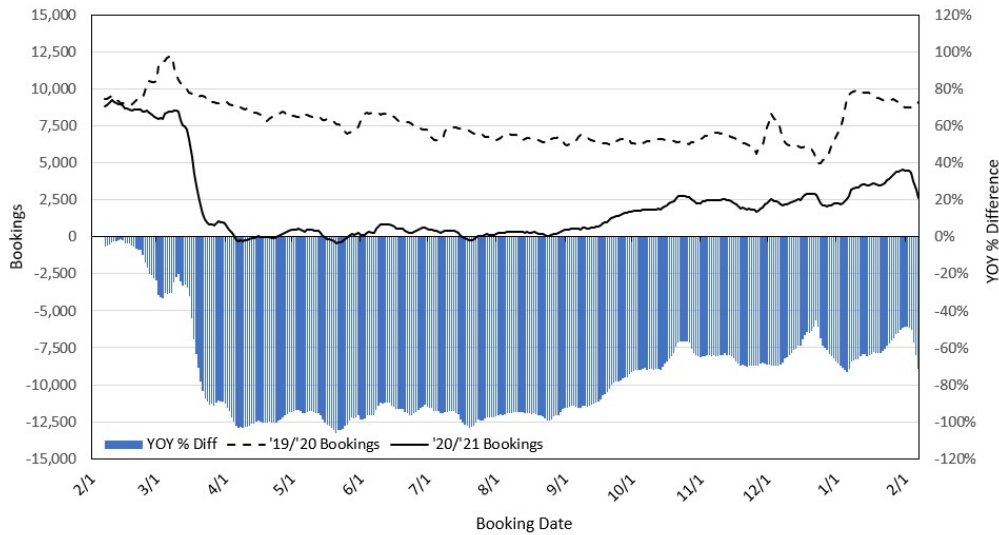
## 2021 Initial Weekly Unemployment Claims by Island



## Weekly Unemployment Initial Claims: January 30, 2021

<b>State of Hawaii</b>	3,823
<b>C&amp;C of Oahu</b>	2,279
<b>Hawaii County</b>	434
<b>Maui County</b>	622
<b>Kauai County</b>	221
<b>Agent</b> (filed in Hawaii against another state)	267

### Travel Agency Bookings to Hawaii for Future Arrivals\* Based on a 7-day Moving Average, as of February 7, 2021 U.S.



\*Future Arrivals refers to all arrivals that are 'future' relative to the referenced booking date.  
Source: Global Agency Pro

Update: Feb 7, 2021

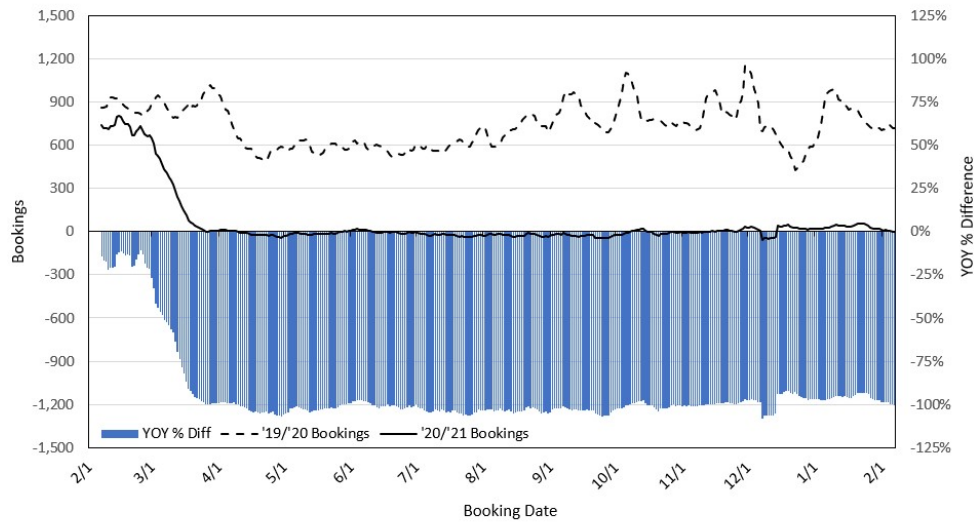
### Travel Agency Bookings to Hawaii for Future Arrivals\* Based on a 7-day Moving Average, as of February 7, 2021 Japan



\*Future Arrivals refers to all arrivals that are 'future' relative to the referenced booking date.  
Source: Global Agency Pro

Update: Feb 7, 2021

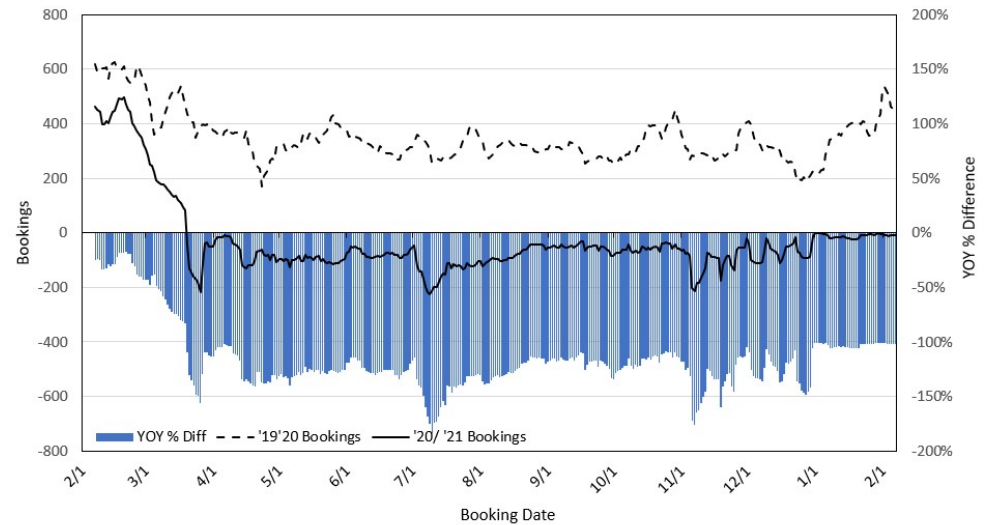
### Travel Agency Bookings to Hawaii for Future Arrivals\* Based on a 7-day Moving Average, as of February 7, 2021 Canada



\*Future Arrivals refers to all arrivals that are 'future' relative to the referenced booking date.  
Source: Global Agency Pro

Update: Feb 7, 2021

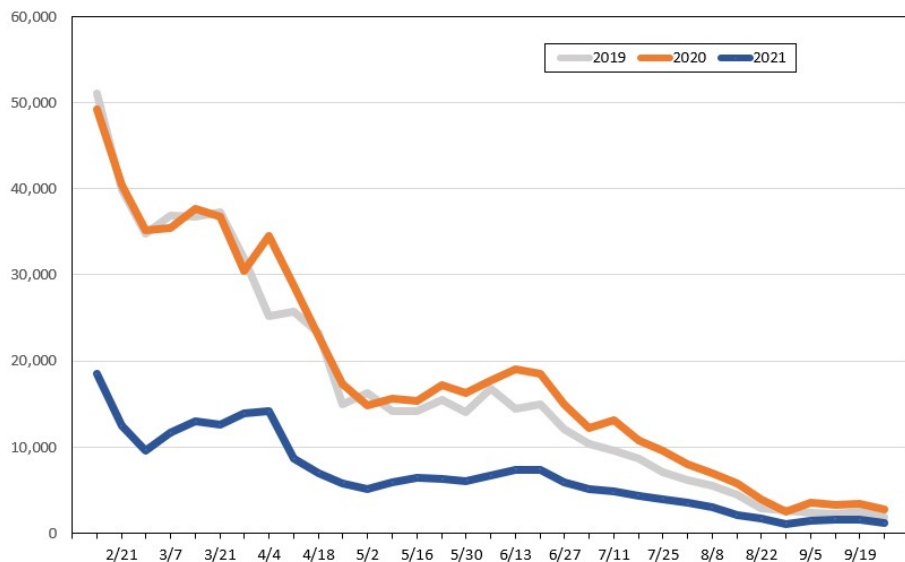
### Travel Agency Bookings to Hawaii for Future Arrivals\* Based on a 7-day Moving Average, as of February 7, 2021 Australia



\*Future Arrivals refers to all arrivals that are 'future' relative to the referenced booking date.  
Source: Global Agency Pro

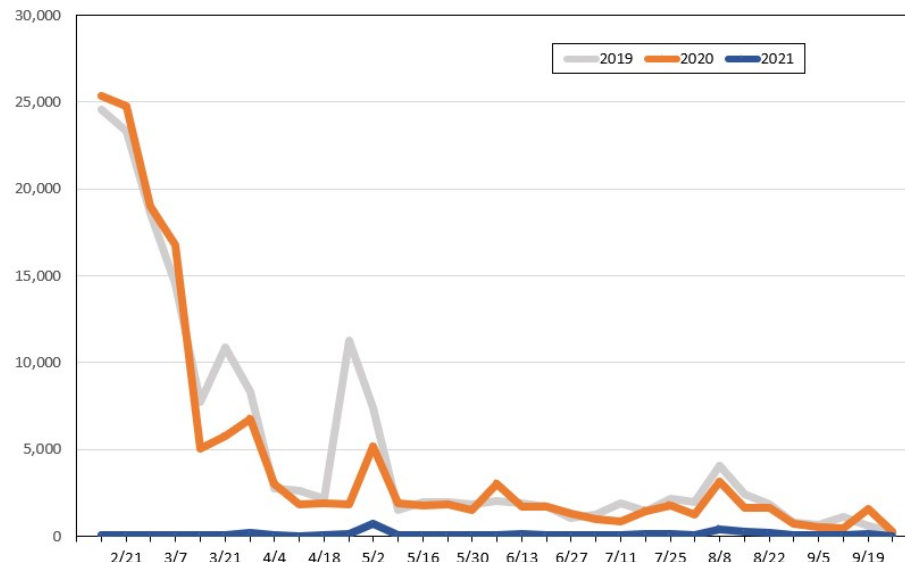
Update: Feb 7, 2021

**Travel Agency Weekly Bookings for Future Travel to Hawai'i as of February 7, 2021**  
U.S.



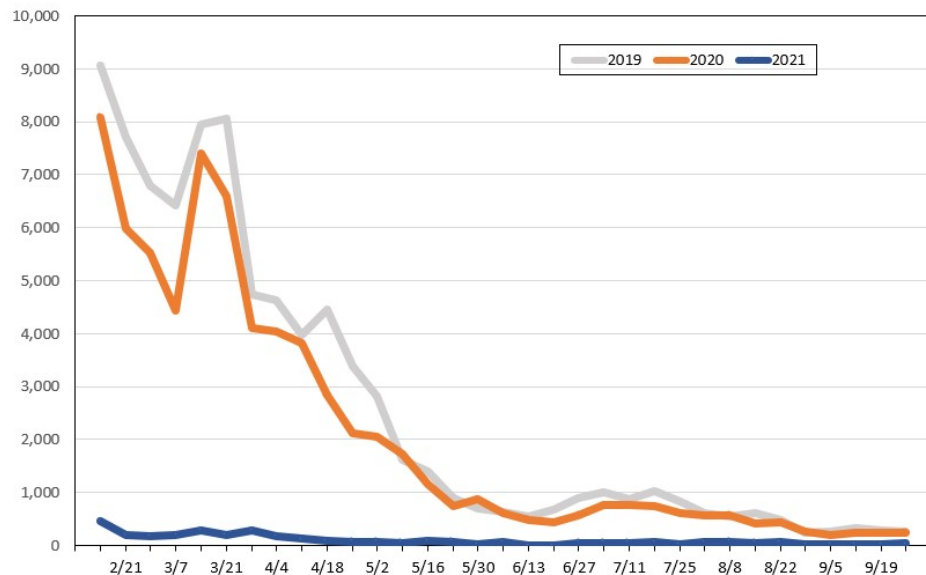
Source: Global Agency Pro, as of February 7, 2021

**Travel Agency Weekly Bookings for Future Travel to Hawai'i as of February 7, 2021**  
Japan



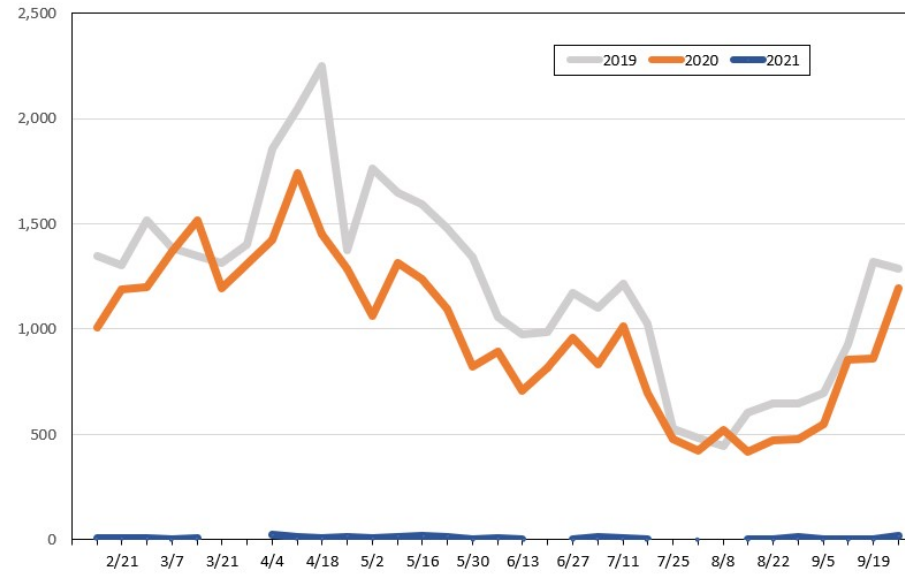
Source: Global Agency Pro, as of February 7, 2021

**Travel Agency Weekly Bookings for Future Travel to Hawai'i as of February 7, 2021**  
Canada



Source: Global Agency Pro, as of February 7, 2021

**Travel Agency Weekly Bookings for Future Travel to Hawai'i as of February 7, 2021**  
Australia



Source: Global Agency Pro, as of February 7, 2021