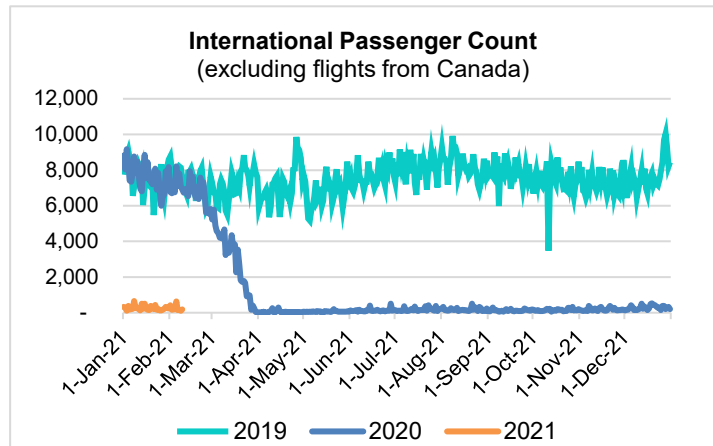
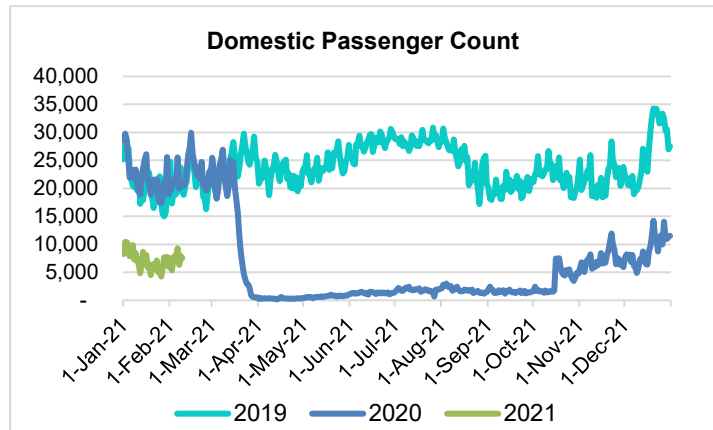
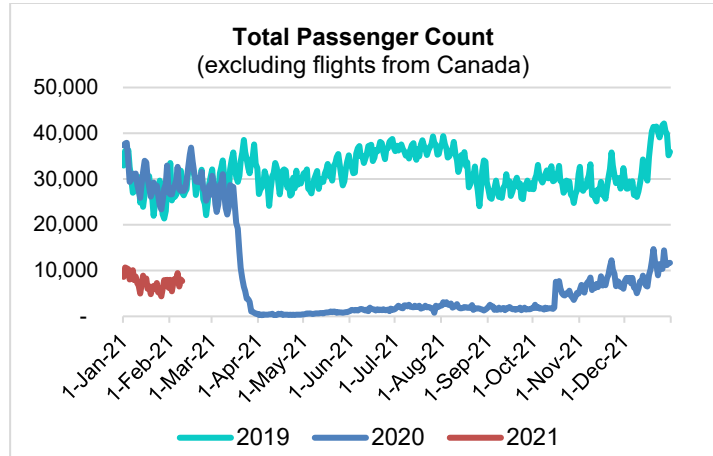


# HTA COVID-19 UPDATE

(Issued: 2/10/21 @ 4:30pm)

Reason for Trip by Arrival Airport - Transpacific Screened Passengers as of 02/09/21	Honolulu (HNL)	Kahului (OGG)	Kona (KOA)	Lihue (LIH)	Grand Total
Airline Crew	338	156	78	10	582
Connecting Flight (Transit)	297	20	0	0	317
Corporate Meeting	3	16	0	0	19
Essential Worker	94	27	8	5	134
Honeymoon	7	6	0	0	13
Incentive Trip	1	0	0	0	1
Intended Resident	93	16	12	4	125
Military or Federal Government	110	1	0	10	121
Other	39	14	8	0	61
Other Business	61	30	13	0	104
Pleasure/Vacation	1,760	1,916	857	25	4,558
Returning Resident	1,183	120	96	10	1,409
To Attend School	6	1	1	0	8
To Get Married	1	5	0	0	6
Visiting Friends or Relatives	642	251	182	18	1,093
<b>Grand Total</b>	<b>4,635</b>	<b>2,579</b>	<b>1,255</b>	<b>82</b>	<b>8,551</b>

**Source:** Safe Travels program developed by the State of Hawaii Office of Enterprise Technology Services  
**Note:** The data is preliminary and subject to change



**Daily Passenger Count Table**

02/09/2021	Domestic	International	Total
Oahu	4082	186	4268
Maui	2283		2283
Island of Hawaii	1118		1118
Kauai	50		50
State	7533	186	7719

## Novel Coronavirus in Hawaii

### COVID-19 Positive Cases

Cumulative totals as of 12:00pm on February 10, 2021

Total Confirmed Cases	26,584* (56 new)
Hawaii	2,203
Kauai	179
Lanai	109
Maui	1882†
Molokai	25
Oahu	21,423
Out of State	763
Pending	0
Required Hospitalization	1766‡
Hawaii Deaths	423
Cases in the past 14 days	1,085*

### Footnotes for COVID-19 Cases

\*As a result of updated information, two cases on Oahu and one case out-of-state were removed from the counts.

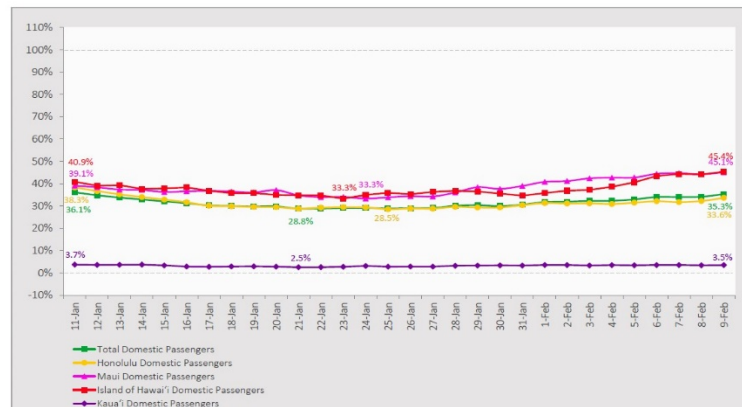
\*\*Using cases reported in the past 14 days provides a rough approximation of the number of cases currently meeting criteria for isolation. This proxy number for "active cases" resolves classification issues for cases unable to be reached or who are out of jurisdiction, for whom precise release from isolation date may not be possible to determine. It is also not influenced by lags in data entry. (This total does not include Hawaii residents diagnosed outside of Hawaii)

†One case is a Lanai resident whose exposure is on Maui Island and who will be remaining on Maui Island for the interim.

‡Includes Hawaii residents hospitalized out of state.

## 7-Day Domestic by Island Moving Average Daily Passenger Volume

2021 Volume as Percentage of 2020 Volume  
Through February 9, 2021



Source: HVCB analysis based on data from DBEDT  
Note: Passenger volume figures include both visitors and residents.

## Domestic by Island Month-to-Date and Year-to-Date Daily Passenger Volume

2021 Volume versus 2020 Volume  
Through February 9, 2021

February 2021 (Month-to-Date through February 9)

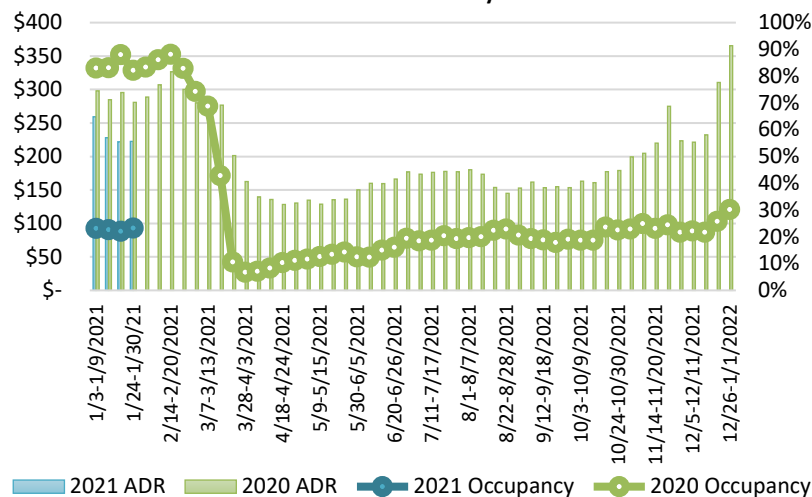
	2021	2020	Volume Change	Percent Change
Honolulu	34,186	104,168	-69,982	-67.2%
Maui County	21,366	48,843	-27,477	-56.3%
Island of Hawai'i	10,229	23,938	-13,709	-57.3%
Kaua'i	570	17,233	-16,663	-96.7%
<b>Total</b>	<b>66,351</b>	<b>194,182</b>	<b>-127,831</b>	<b>-65.8%</b>

2021 (Year-to-Date through February 9)

	2021	2020	Volume Change	Percent Change
Honolulu	158,956	488,994	-330,038	-67.5%
Maui County	84,102	220,315	-136,213	-61.8%
Island of Hawai'i	40,150	107,802	-67,652	-62.8%
Kaua'i	2,407	75,364	-72,957	-96.8%
<b>Total</b>	<b>285,615</b>	<b>892,475</b>	<b>-606,860</b>	<b>-68.0%</b>

Source: HVCB analysis based on data from DBEDT  
Note: Passenger volume figures include both visitors and residents. Total includes other international passengers.

## State of Hawai'i Hotel Performance by Week - 2021 vs 2020



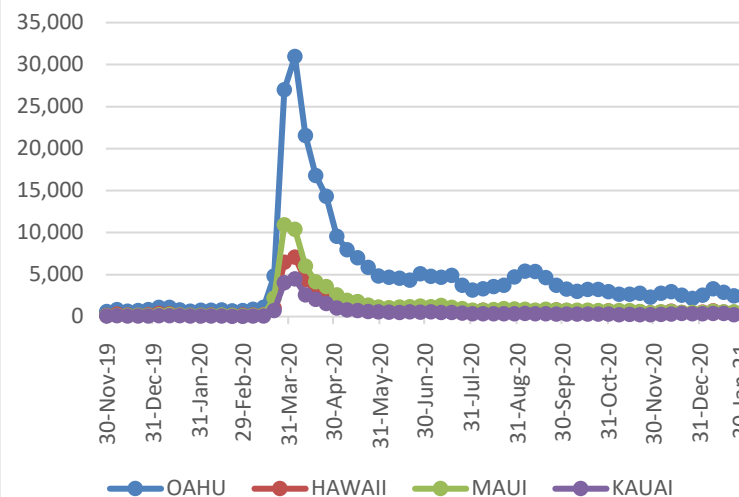
## Hawaii Hotel Performance Info:

For the week of January 24 – January 30, 2021

	Occupancy	ADR	RevPAR
<b>State of Hawaii</b>	23.3%	\$ 222.55	\$ 51.85
<b>Oahu</b>	22.8%	\$ 159.49	\$ 36.32
<b>Maui County</b>	20.1%	\$ 379.48	\$ 76.09
<b>Kauai County</b>	24.5%	\$ 169.75	\$ 41.53
<b>Island of Hawaii</b>	31.0%	\$ 238.57	\$ 74.02

Statistics based on participating properties and may vary by week.

## 2021 Initial Weekly Unemployment Claims by Island



## Weekly Unemployment Initial Claims: January 30, 2021

<b>State of Hawaii</b>	3,823
<b>C&amp;C of Oahu</b>	2,279
<b>Hawaii County</b>	434
<b>Maui County</b>	622
<b>Kauai County</b>	221
<b>Agent</b> (filed in Hawaii against another state)	267

## News Highlights

February 10, 2021

**Honolulu Star Advertiser:** [Bill to unify travel rules draws opposition on Kauai](#)

**Honolulu Civil Beat:** [Proposal To Scrap Kauai's Two-Test Protocol For Arriving Travelers Advances](#)

**The Maui News:** [Maui hotel occupancy, revenue get a December bump](#)

**West Hawaii Today:** [Big Island reports 3 new COVID-19 cases, no deaths](#)

**Hawaii Tribune-Herald:** [Agencies warn of COVID-19 vaccine scams](#)

**CNBC:** [Vacancies and vaccines: How travelers could benefit from hotel industry struggles](#)

**Travel Pulse:** [Vaccines Lead to Surge in Travel Planning](#)

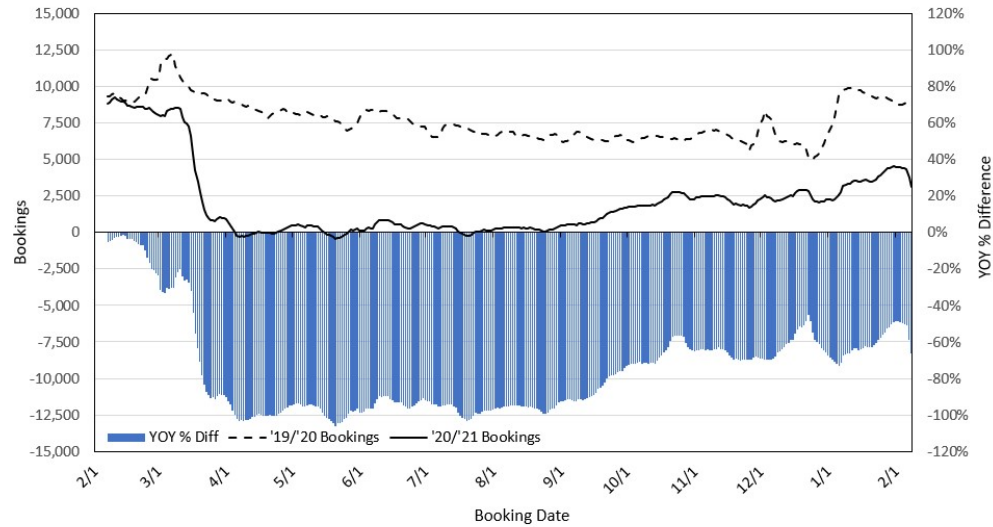
**Jeffsetter Travel:** [State May Defund Hawaii Tourism Authority](#)

**Islands:** [Need to Revitalize? It's Time to Consider a Wellness Getaway](#)

**Mel Magazine:** [Hawaii Is Dreaming of a Post-Tourism Paradise](#)

**SF Gate:** [Short-term rentals are decreasing in Hawaii as pandemic drags on](#)

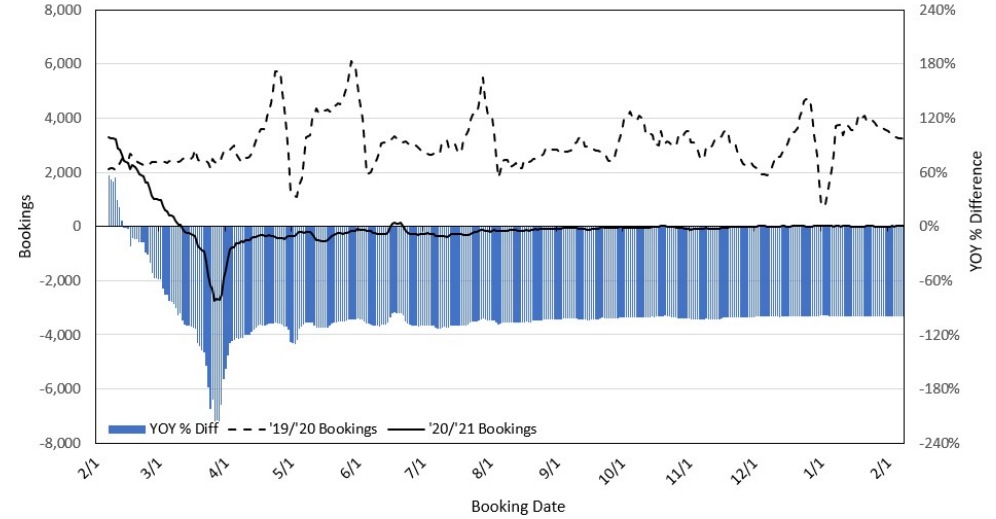
### Travel Agency Bookings to Hawaii for Future Arrivals\* Based on a 7-day Moving Average, as of February 8, 2021 U.S.



\*Future Arrivals refers to all arrivals that are 'future' relative to the referenced booking date.  
Source: Global Agency Pro

Update: Feb 8, 2021

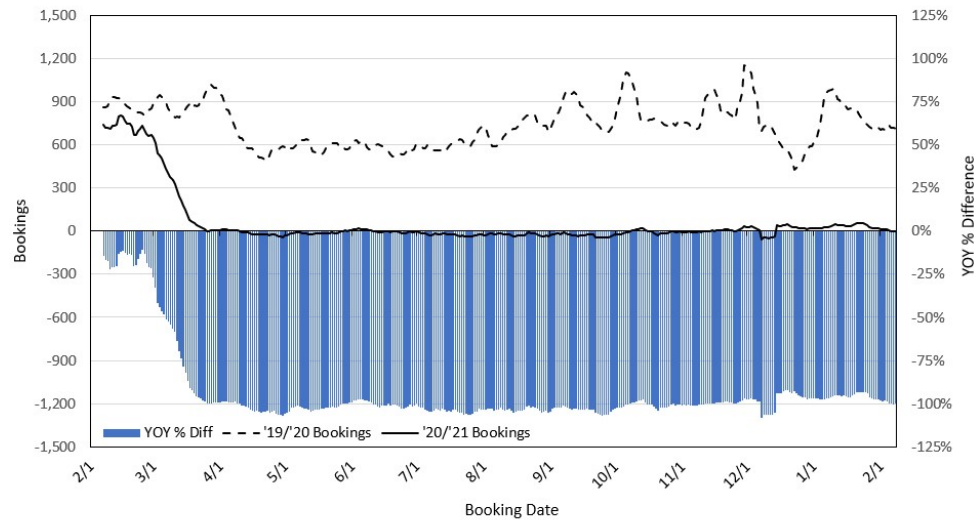
### Travel Agency Bookings to Hawaii for Future Arrivals\* Based on a 7-day Moving Average, as of February 8, 2021 Japan



\*Future Arrivals refers to all arrivals that are 'future' relative to the referenced booking date.  
Source: Global Agency Pro

Update: Feb 8, 2021

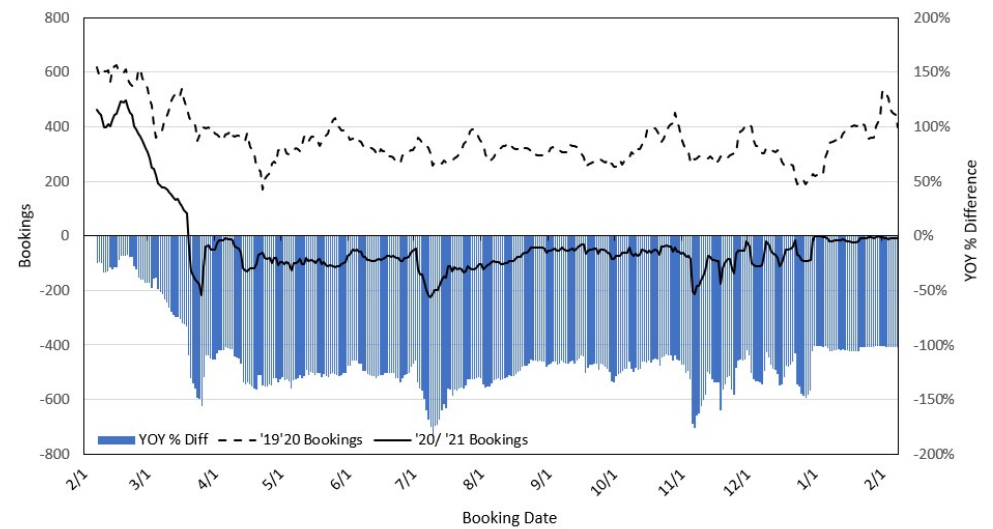
### Travel Agency Bookings to Hawaii for Future Arrivals\* Based on a 7-day Moving Average, as of February 8, 2021 Canada



\*Future Arrivals refers to all arrivals that are 'future' relative to the referenced booking date.  
Source: Global Agency Pro

Update: Feb 8, 2021

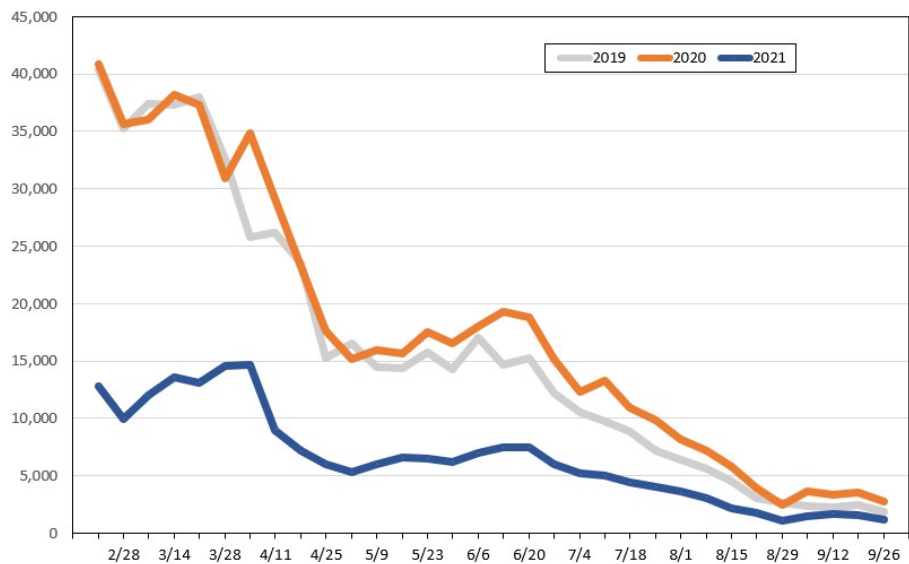
### Travel Agency Bookings to Hawaii for Future Arrivals\* Based on a 7-day Moving Average, as of February 8, 2021 Australia



\*Future Arrivals refers to all arrivals that are 'future' relative to the referenced booking date.  
Source: Global Agency Pro

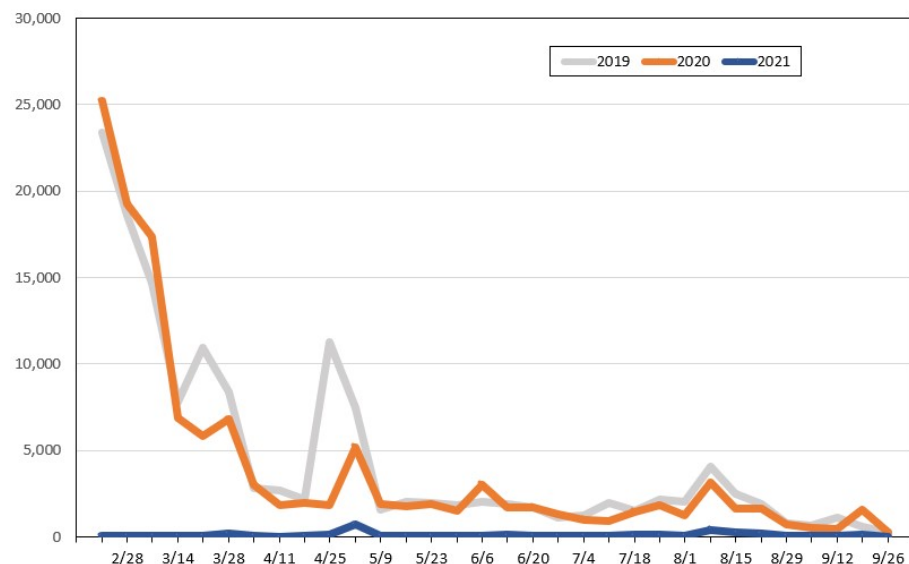
Update: Feb 8, 2021

**Travel Agency Weekly Bookings for Future Travel to Hawai'i as of February 8, 2021**  
U.S.



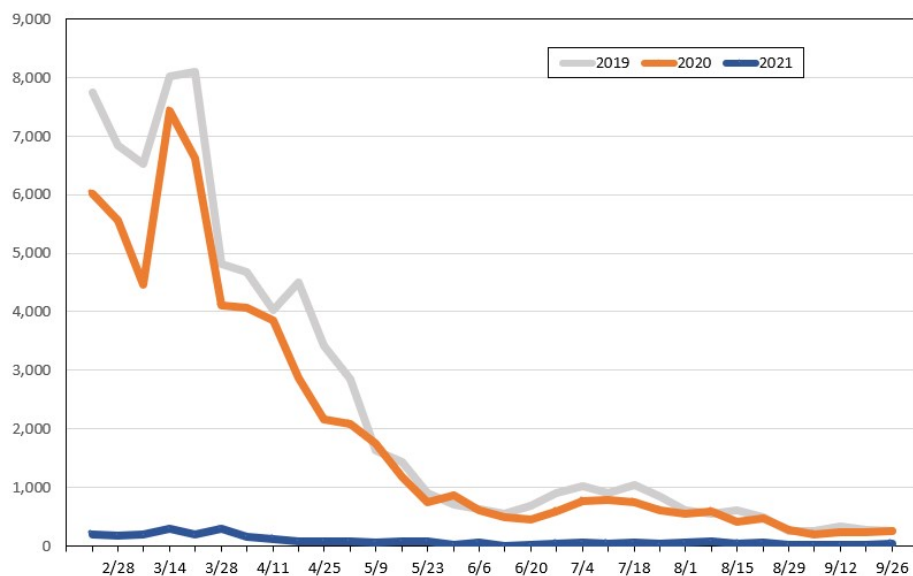
Source: Global Agency Pro, as of February 8, 2021

**Travel Agency Weekly Bookings for Future Travel to Hawai'i as of February 8, 2021**  
Japan



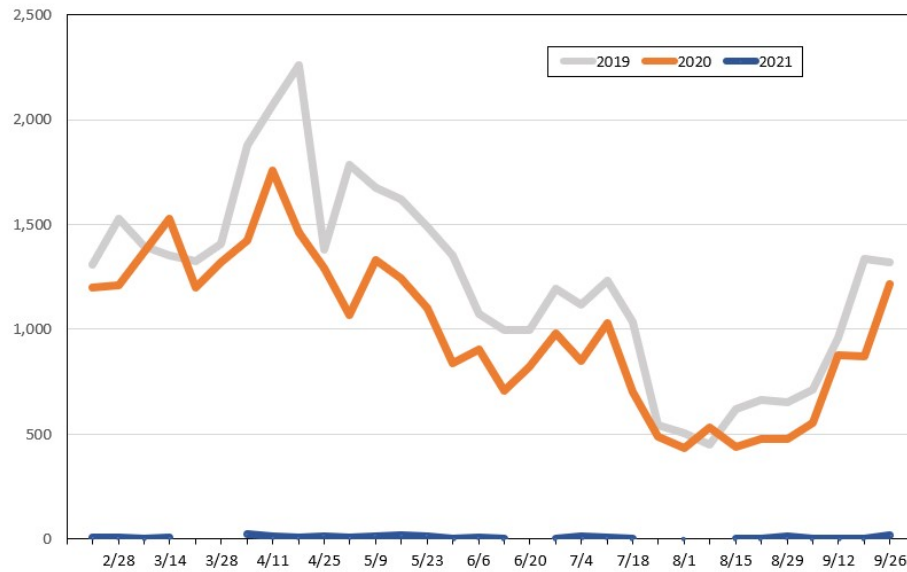
Source: Global Agency Pro, as of February 8, 2021

**Travel Agency Weekly Bookings for Future Travel to Hawai'i as of February 8, 2021**  
Canada



Source: Global Agency Pro, as of February 8, 2021

**Travel Agency Weekly Bookings for Future Travel to Hawai'i as of February 8, 2021**  
Australia



Source: Global Agency Pro, as of February 8, 2021