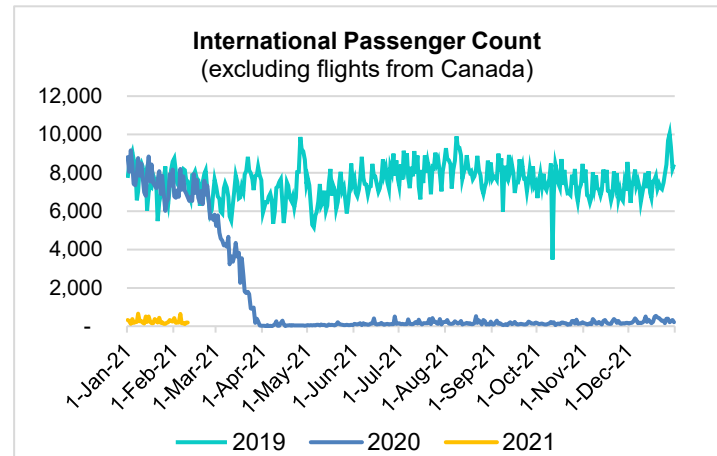
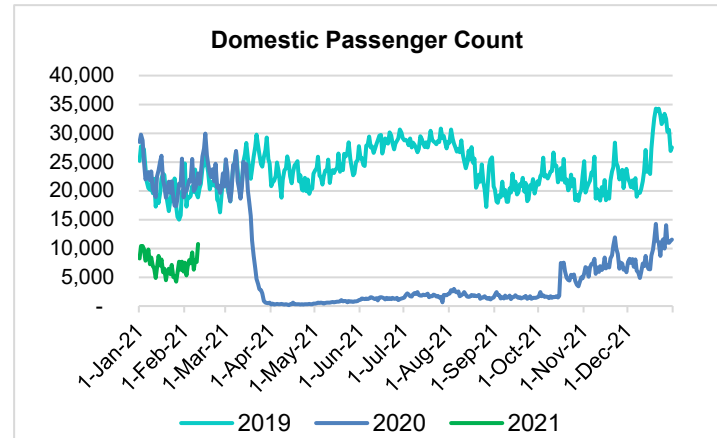
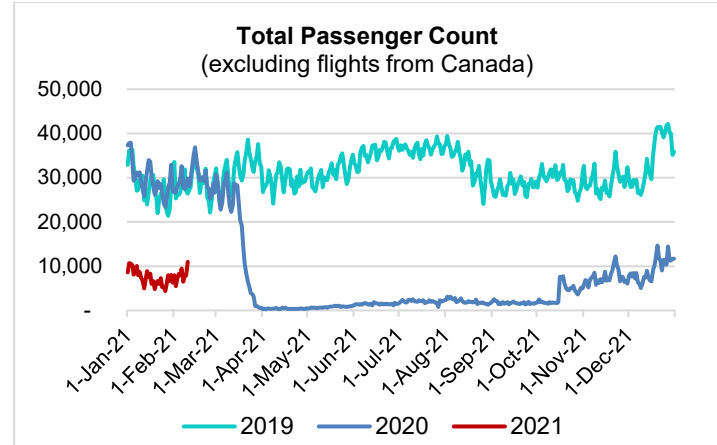


# HTA COVID-19 UPDATE

(Issued: 2/11/21 @ 4:30pm)

Reason for Trip by Arrival Airport - Transpacific Screened Passengers as of 02/10/21	Honolulu (HNL)	Kahului (OGG)	Kona (KOA)	Lihue (LIH)	Grand Total
Airline Crew	394	186	112	9	701
Connecting Flight (Transit)	314	24	3	3	344
Corporate Meeting	3	5	0	0	8
Essential Worker	100	16	5	4	125
Honeymoon	7	9	1	0	17
Incentive Trip	5	3	0	0	8
Intended Resident	75	16	13	0	104
Military or Federal Government	124	0	0	6	130
Other	60	10	5	2	77
Other Business	72	30	14	1	117
Pleasure/Vacation	3,250	3,189	1,158	44	7,641
Returning Resident	940	149	106	27	1,222
To Attend School	6	0	1	0	7
To Get Married	9	2	3	0	14
Transit	3	0	0	0	3
Visiting Friends or Relatives	908	262	192	12	1,374
<b>Grand Total</b>	<b>6,270</b>	<b>3,901</b>	<b>1,613</b>	<b>108</b>	<b>11,892</b>

**Source:** Safe Travels program developed by the State of Hawaii Office of Enterprise Technology Services  
**Note:** The data is preliminary and subject to change



**Daily Passenger Count Table**

02/10/2021	Domestic	International	Total
Oahu	5714	195	5909
Maui	3506		3506
Island of Hawaii	1464		1464
Kauai	91		91
State	10775	195	10970

## Novel Coronavirus in Hawaii

### COVID-19 Positive Cases

Cumulative totals as of 12:00pm on February 11, 2021

Total Confirmed Cases	26,675* (95 new)
Hawaii	2,206
Kauai	179
Lanai	109
Maui	1901†
Molokai	26
Oahu	21,484
Out of State	770
Pending	0
Required Hospitalization	1775‡
Hawaii Deaths	424
Cases in the past 14 days	1,078*

### Footnotes for COVID-19 Cases

\*As a result of updated information, two cases on Oahu and two cases out-of-state were removed from the counts, and one case on Maui was recategorized to out-of-state.

\*\*Using cases reported in the past 14 days provides a rough approximation of the number of cases currently meeting criteria for isolation. This proxy number for "active cases" resolves classification issues for cases unable to be reached or who are out of jurisdiction, for whom precise release from isolation date may not be possible to determine. It is also not influenced by lags in data entry. (This total does not include Hawaii residents diagnosed outside of Hawaii)

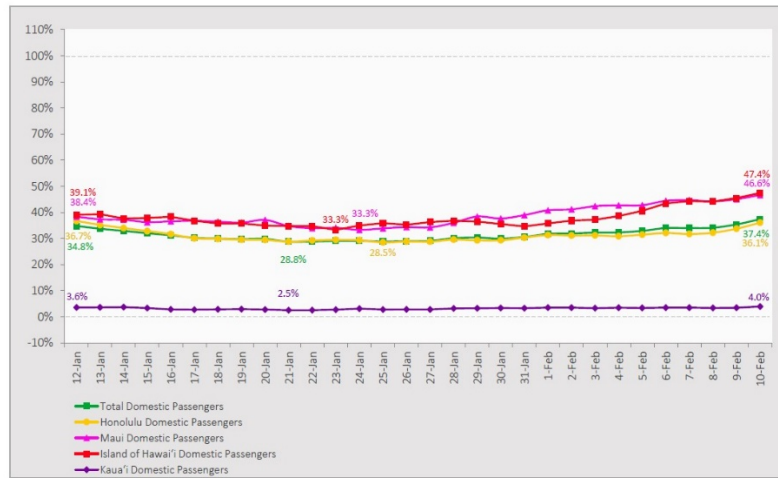
†One case is a Lanai resident whose exposure is on Maui Island and who will be remaining on Maui Island for the interim.

‡Includes Hawaii residents hospitalized out of state.

## 7-Day Domestic by Island Moving Average Daily Passenger Volume

2021 Volume as Percentage of 2020 Volume

Through February 10, 2021



Source: HVCB analysis based on data from DBEDT

Note: Passenger volume figures include both visitors and residents.

## Domestic by Island Month-to-Date and Year-to-Date Daily Passenger Volume

2021 Volume versus 2020 Volume

Through February 10, 2021

February 2021 (Month-to-Date through February 10)

	2021	2020	Volume Change	Percent Change
Honolulu	40,007	115,580	-75,573	-65.4%
Maui County	24,872	53,514	-28,642	-53.5%
Island of Hawai'i	11,721	26,511	-14,790	-55.8%
Kaua'i	661	18,962	-18,301	-96.5%
Total	77,261	214,567	-137,306	-64.0%

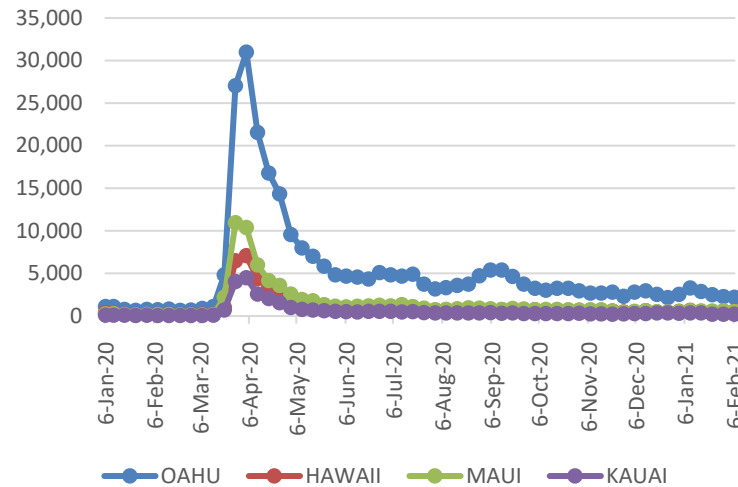
2021 (Year-to-Date through February 10)

	2021	2020	Volume Change	Percent Change
Honolulu	164,777	500,406	-335,629	-67.1%
Maui County	87,608	224,986	-137,378	-61.1%
Island of Hawai'i	41,642	110,375	-68,733	-62.3%
Kaua'i	2,498	77,093	-74,595	-96.8%
Total	296,525	912,860	-616,335	-67.5%

Source: HVCB analysis based on data from DBEDT

Note: Passenger volume figures include both visitors and residents. Total includes other international passengers.

## 2021 Initial Weekly Unemployment Claims by Island



## Weekly Unemployment Initial Claims: February 6, 2021

State of Hawaii	3,637
C&C of Oahu	2,187
Honolulu	946
Kaneohe	211
Waipahu	1030
Hawaii County	525
Hilo	316
Kona	209
Maui County	510
Wailuku	499
Molokai	11
Kauai County	219
Agent (filed in Hawaii against another state)	196

## News Highlights

February 11, 2021

**Hawaii News Now:** [This is how the Health Department determines which essential workers get vaccinated](#)

**KHON2:** [CDC study shows benefit of double masking](#)

**West Hawaii Today:** [Common questions about COVID-19 vaccinations answered](#)

**Big Island Now:** [Recovery Support for Hawaii Small Businesses Offered by DBEDT](#)

**The Maui News:** [Canceled vaccine appointments set to be rescheduled](#)

**Hawaii Tribune-Herald:** ['Great demand' for vaccines: Older kupuna, essential workers continue to be priority](#)

**The Garden Island:** [COVID-19 vaccinations come to Longs Drugs](#)

**Travel Pulse:** [Hawaii Travel: Governor Ige Wary of Lifting Restrictions for Vaccinated Travelers](#)

**ABC News:** [Canada to require negative COVID test at land border Feb 15](#)

## Helpful Resources

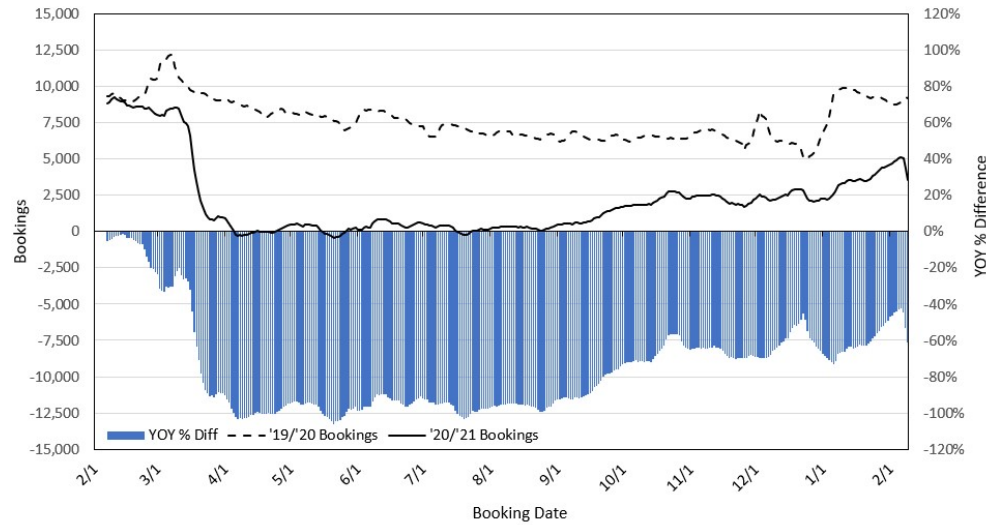
**Department of Health**  
<https://hawaiiicovid19.com/>

**Hawaii Tourism Authority**  
<https://www.hawaiitourismauthority.org/covid-19-updates/>

**Dept. of Business, Economic Development & Tourism**  
<https://dbedt.hawaii.gov/economic/covid19/>

**Department of Transportation**  
<https://hidot.hawaii.gov/coronavirus/>

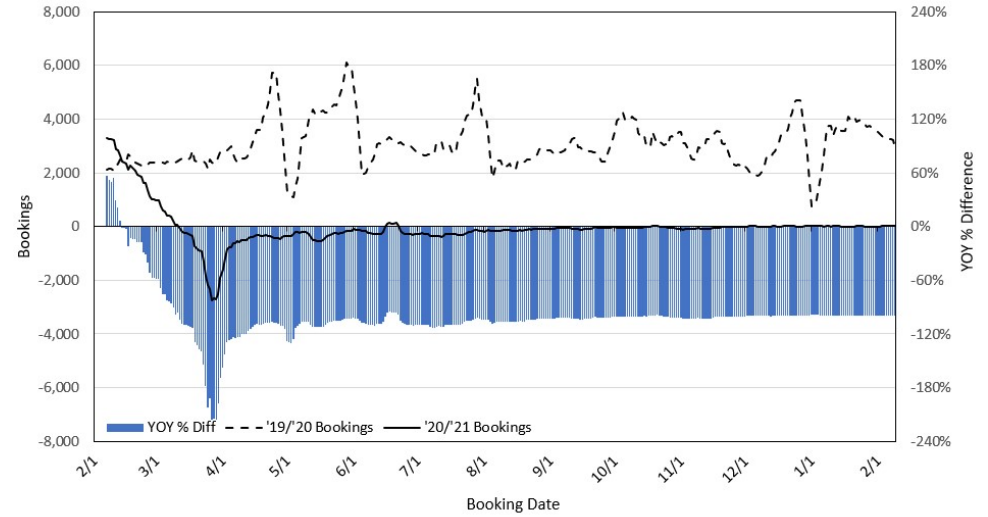
### Travel Agency Bookings to Hawaii for Future Arrivals\* Based on a 7-day Moving Average, as of February 9, 2021 U.S.



\*Future Arrivals refers to all arrivals that are 'future' relative to the referenced booking date.  
Source: Global Agency Pro

Update: Feb 9, 2021

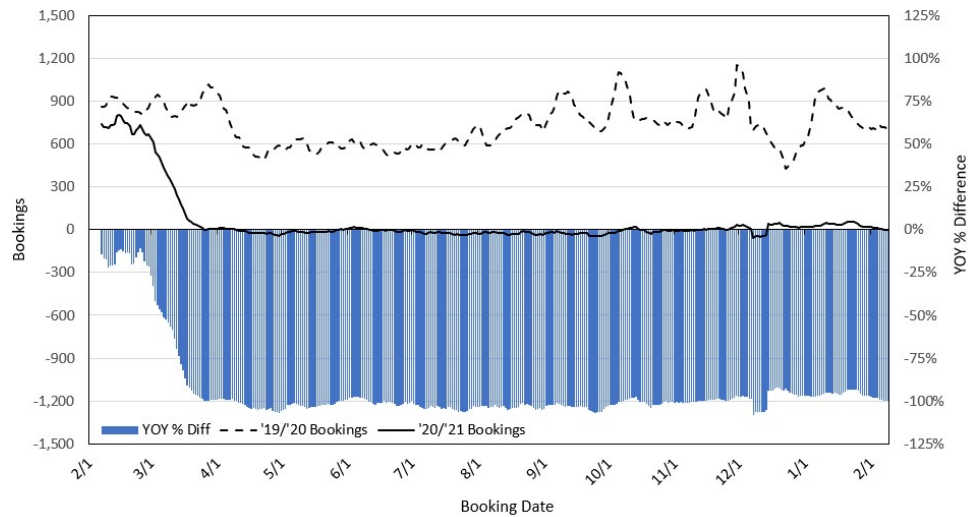
### Travel Agency Bookings to Hawaii for Future Arrivals\* Based on a 7-day Moving Average, as of February 9, 2021 Japan



\*Future Arrivals refers to all arrivals that are 'future' relative to the referenced booking date.  
Source: Global Agency Pro

Update: Feb 9, 2021

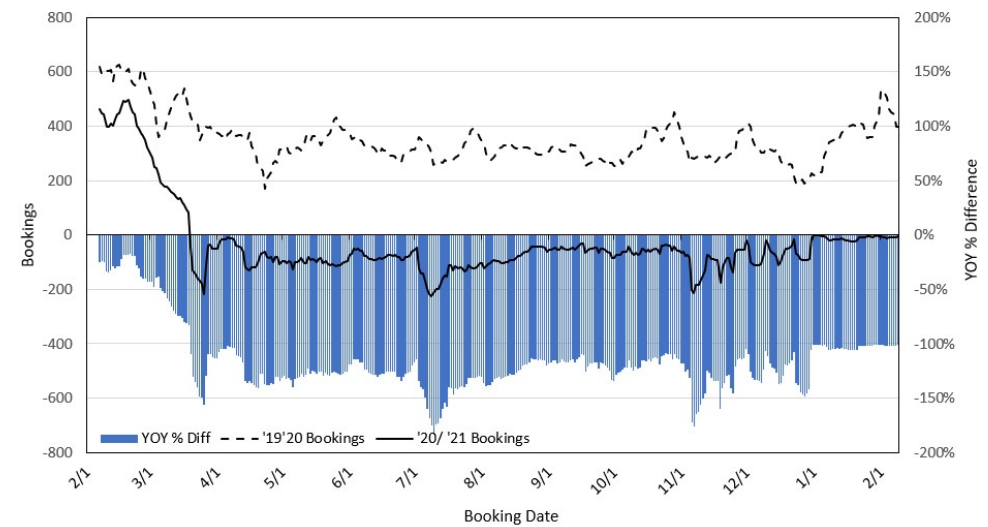
### Travel Agency Bookings to Hawaii for Future Arrivals\* Based on a 7-day Moving Average, as of February 9, 2021 Canada



\*Future Arrivals refers to all arrivals that are 'future' relative to the referenced booking date.  
Source: Global Agency Pro

Update: Feb 9, 2021

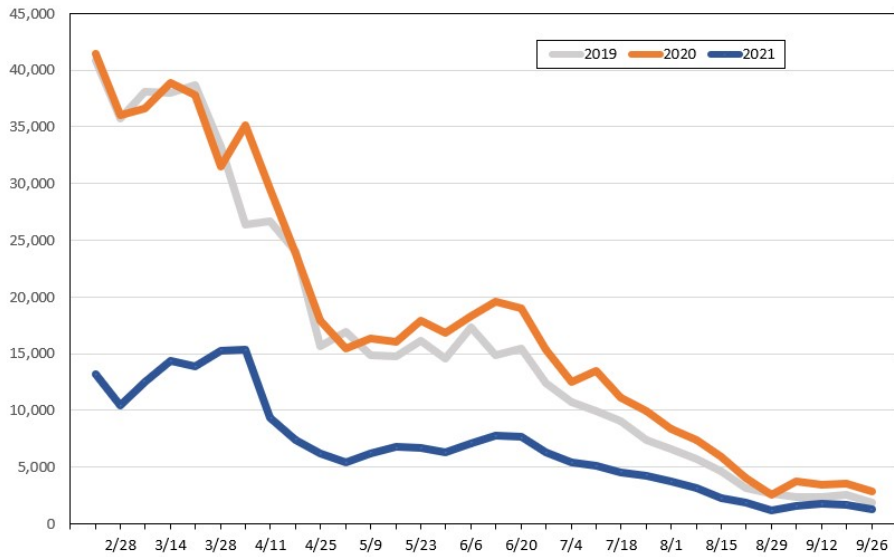
### Travel Agency Bookings to Hawaii for Future Arrivals\* Based on a 7-day Moving Average, as of February 9, 2021 Australia



\*Future Arrivals refers to all arrivals that are 'future' relative to the referenced booking date.  
Source: Global Agency Pro

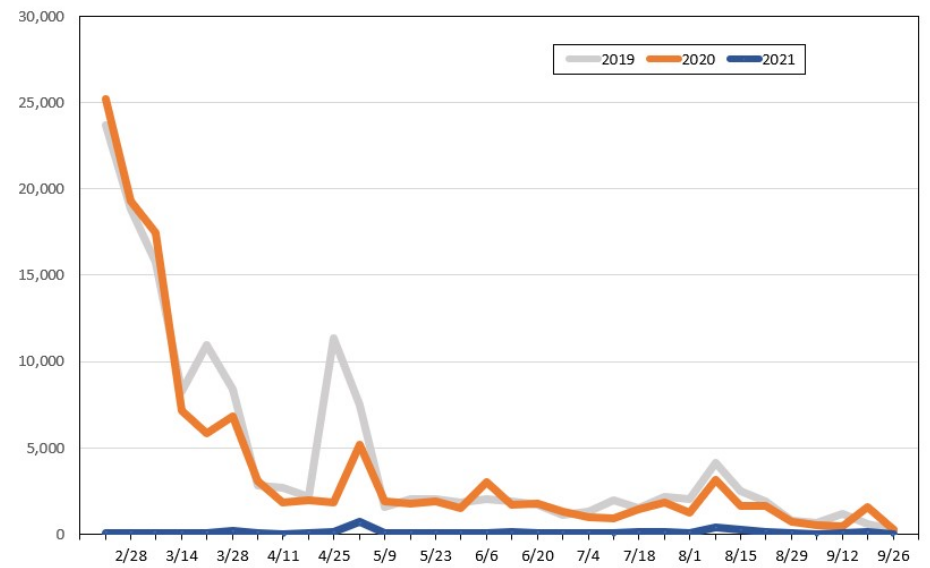
Update: Feb 9, 2021

**Travel Agency Weekly Bookings for Future Travel to Hawai'i as of February 9, 2021**  
U.S.



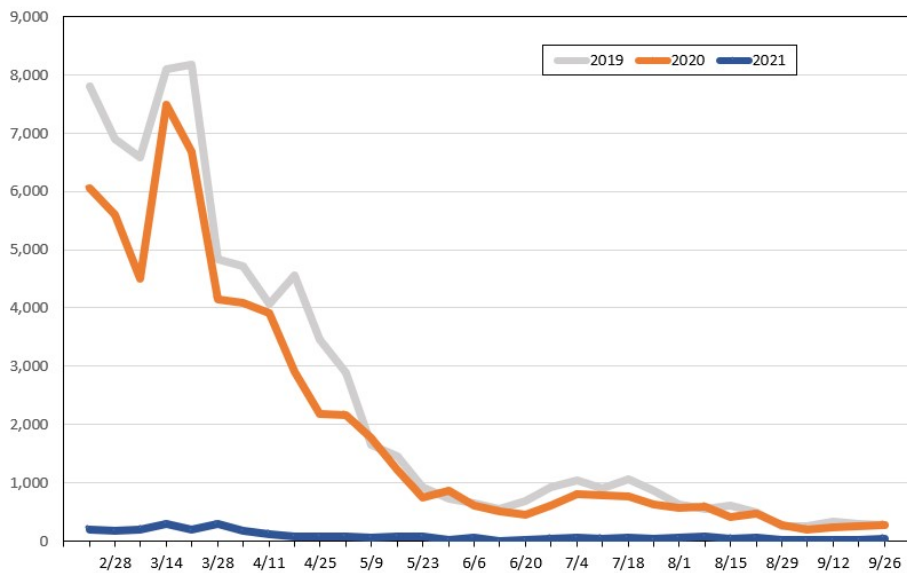
Source: Global Agency Pro, as of February 9, 2021

**Travel Agency Weekly Bookings for Future Travel to Hawai'i as of February 9, 2021**  
Japan



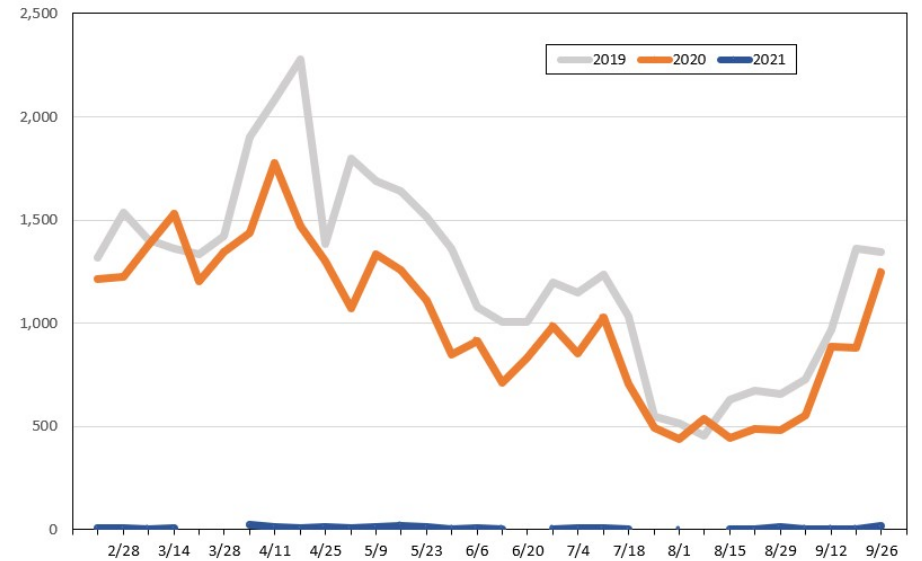
Source: Global Agency Pro, as of February 9, 2021

**Travel Agency Weekly Bookings for Future Travel to Hawai'i as of February 9, 2021**  
Canada



Source: Global Agency Pro, as of February 9, 2021

**Travel Agency Weekly Bookings for Future Travel to Hawai'i as of February 9, 2021**  
Australia



Source: Global Agency Pro, as of February 9, 2021