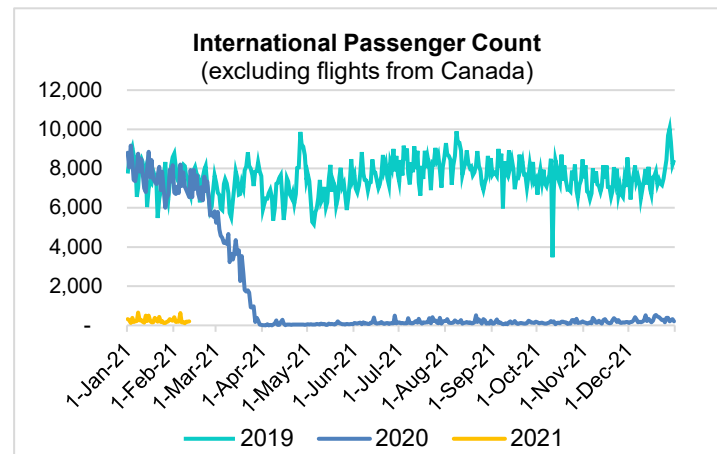
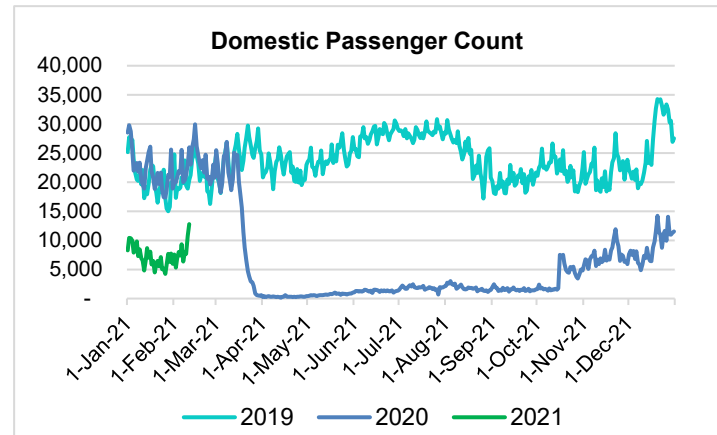
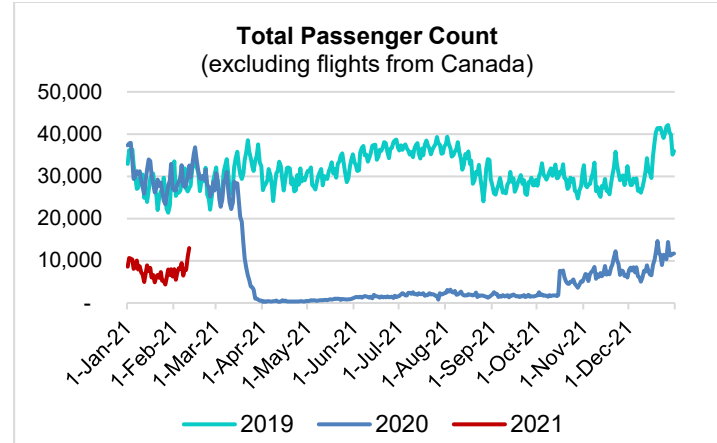


# HTA COVID-19 UPDATE

(Issued: 2/12/21 @ 4:30pm)

Reason for Trip by Arrival Airport - Transpacific Screened Passengers as of 02/11/21	Honolulu (HNL)	Kahului (OGG)	Kona (KOA)	Lihue (LIH)	Grand Total
Airline Crew	460	202	110	13	785
Connecting Flight (Transit)	295	25	1	0	321
Corporate Meeting	9	4	0	0	13
Essential Worker	86	11	6	0	103
Honeymoon	19	12	2	0	33
Incentive Trip	2	0	0	0	2
Intended Resident	79	15	12	1	107
Military or Federal Government	97	1	7	1	106
Other	81	16	25	0	122
Other Business	77	35	30	1	143
Pleasure/Vacation	4,334	3,461	1,576	64	9,435
Returning Resident	750	141	115	23	1,029
Sports Event	22	0	0	0	22
To Attend School	3	2	1	0	6
To Get Married	9	6	4	0	19
Visiting Friends or Relatives	1,480	268	252	19	2,019
<b>Grand Total</b>	<b>7,803</b>	<b>4,199</b>	<b>2,141</b>	<b>122</b>	<b>14,265</b>

**Source:** Safe Travels program developed by the State of Hawaii Office of Enterprise Technology Services  
**Note:** The data is preliminary and subject to change



**Daily Passenger Count Table**

02/11/2021	Domestic	International	Total
Oahu	6983	207	7190
Maui	3773		3773
Island of Hawaii	1929		1929
Kauai	104		104
State	12789	207	12996

## Novel Coronavirus in Hawaii

### COVID-19 Positive Cases

Cumulative totals as of 12:00pm on February 12, 2021

Total Confirmed Cases	26,743* (70 new)
Hawaii	2,211
Kauai	179
Lanai	109
Maui	1926†
Molokai	26
Oahu	21,515
Out of State	777
Pending	0
Required Hospitalization	1779‡
Hawaii Deaths	425
Cases in the past 14 days	1,034*

### Footnotes for COVID-19 Cases

\*As a result of updated information, two cases on Oahu were removed from the counts.

\*\*Using cases reported in the past 14 days provides a rough approximation of the number of cases currently meeting criteria for isolation. This proxy number for "active cases" resolves classification issues for cases unable to be reached or who are out of jurisdiction, for whom precise release from isolation date may not be possible to determine. It is also not influenced by lags in data entry. (This total does not include Hawaii residents diagnosed outside of Hawaii)

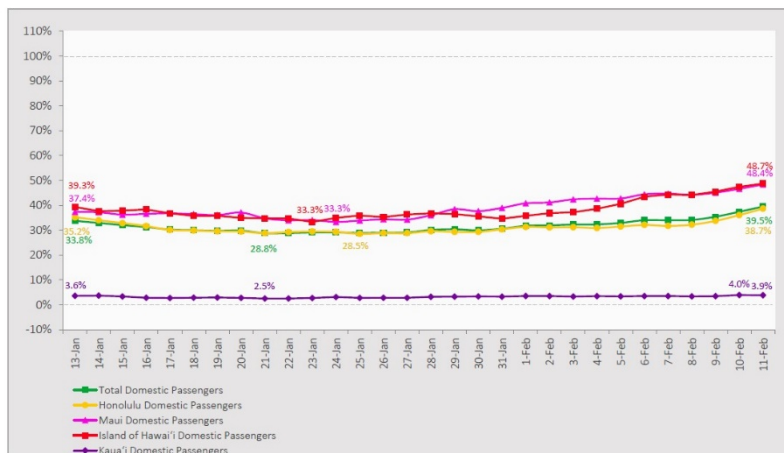
†One case is a Lanai resident whose exposure is on Maui Island and who will be remaining on Maui Island for the interim.

‡Includes Hawaii residents hospitalized out of state.

## 7-Day Domestic by Island Moving Average Daily Passenger Volume

2021 Volume as Percentage of 2020 Volume

Through February 11, 2021



Source: HVCB analysis based on data from DBEDT

Note: Passenger volume figures include both visitors and residents.

## Domestic by Island Month-to-Date and Year-to-Date Daily Passenger Volume

2021 Volume versus 2020 Volume

Through February 11, 2021

February 2021 (Month-to-Date through February 11)

	2021	2020	Volume Change	Percent Change
Honolulu	46,990	127,324	-80,334	-63.1%
Maui County	28,645	59,116	-30,471	-51.5%
Island of Hawai'i	13,650	28,849	-15,199	-52.7%
Kauai	765	20,485	-19,720	-96.3%
<b>Total</b>	<b>90,050</b>	<b>235,774</b>	<b>-145,724</b>	<b>-61.8%</b>

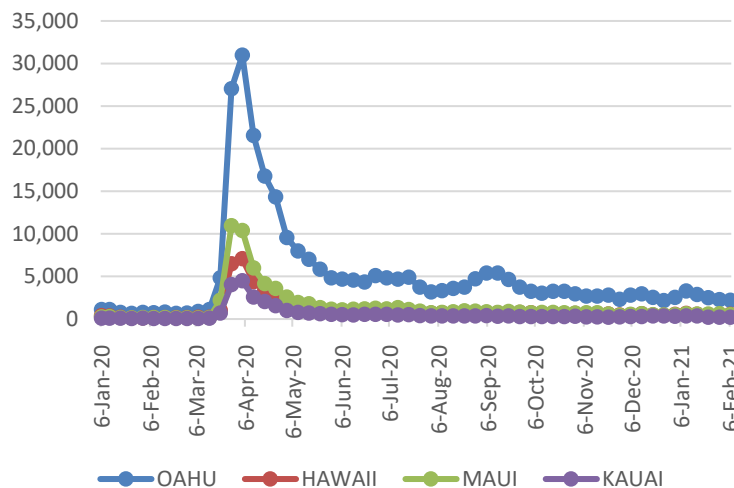
2021 (Year-to-Date through February 11)

	2021	2020	Volume Change	Percent Change
Honolulu	171,760	512,150	-340,390	-66.5%
Maui County	91,381	230,588	-139,207	-60.4%
Island of Hawai'i	43,571	112,713	-69,142	-61.3%
Kauai	2,602	78,616	-76,014	-96.7%
<b>Total</b>	<b>309,314</b>	<b>934,067</b>	<b>-624,753</b>	<b>-66.9%</b>

Source: HVCB analysis based on data from DBEDT

Note: Passenger volume figures include both visitors and residents. Total includes other international passengers.

## 2021 Initial Weekly Unemployment Claims by Island



## Weekly Unemployment Initial Claims: February 6, 2021

<b>State of Hawaii</b>	<b>3,637</b>
<b>C&amp;C of Oahu</b>	<b>2,187</b>
Honolulu	946
Kaneohe	211
Waipahu	1030
<b>Hawaii County</b>	<b>525</b>
Hilo	316
Kona	209
<b>Maui County</b>	<b>510</b>
Wailuku	499
Molokai	11
<b>Kauai County</b>	<b>219</b>
<b>Agent (filed in Hawaii against another state)</b>	<b>196</b>

## News Highlights

February 12, 2021

**Honolulu Star Advertiser:**

[Column: Striking balance between public health, economic recovery](#)

**Hawaii News Now:** [Banners in Waikiki will remind visitors and residents to be COVID-safe](#)

**KHON2:** [Vaccinated people can bypass quarantine after being exposed, travel restrictions remain](#)

**The Garden Island:** [COVID-19 vaccinations come to Longs Drugs](#)

**Phocus Wire:** [Health passport standards, interoperability critical for revival of international travel](#)

**Travel Pulse:** [Canada to Require Negative COVID-19 Tests at Land Border Crossings](#)

**Travel Weekly:** [Hawaii is deploying Clear's Health Pass to streamline entry](#)

**Departures:** [Hawaii Partners With Clear to Allow Travelers With Negative COVID-19 Test Results to Avoid Quarantine](#)

**The Points Guy:** [Opening America: State-by-state guide to coronavirus reopening](#)

## Helpful Resources

**Department of Health**

<https://hawaiiicovid19.com/>

**Hawaii Tourism Authority**

<https://www.hawaiitourismauthority.org/covid-19-updates/>

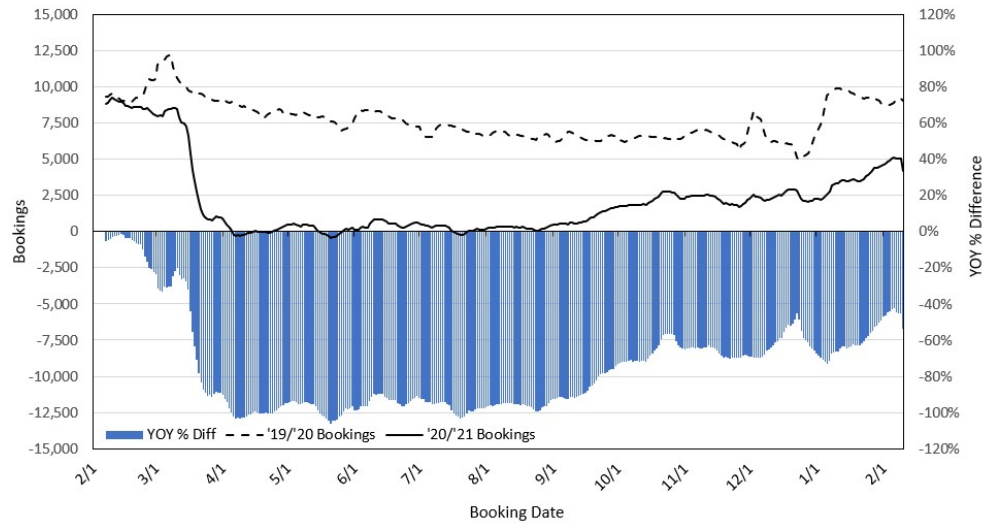
**Dept. of Business, Economic Development & Tourism**

<https://dbedt.hawaii.gov/economic/covid19/>

**Department of Transportation**

<https://hidot.hawaii.gov/coronavirus/>

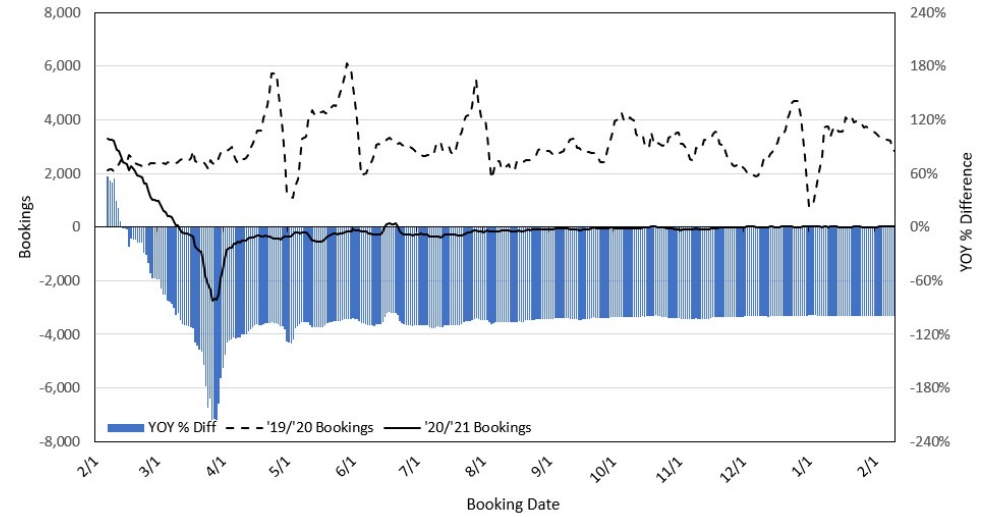
### Travel Agency Bookings to Hawaii for Future Arrivals\* Based on a 7-day Moving Average, as of February 10, 2021 U.S.



\*Future Arrivals refers to all arrivals that are 'future' relative to the referenced booking date.  
Source: Global Agency Pro

Update: Feb 10, 2021

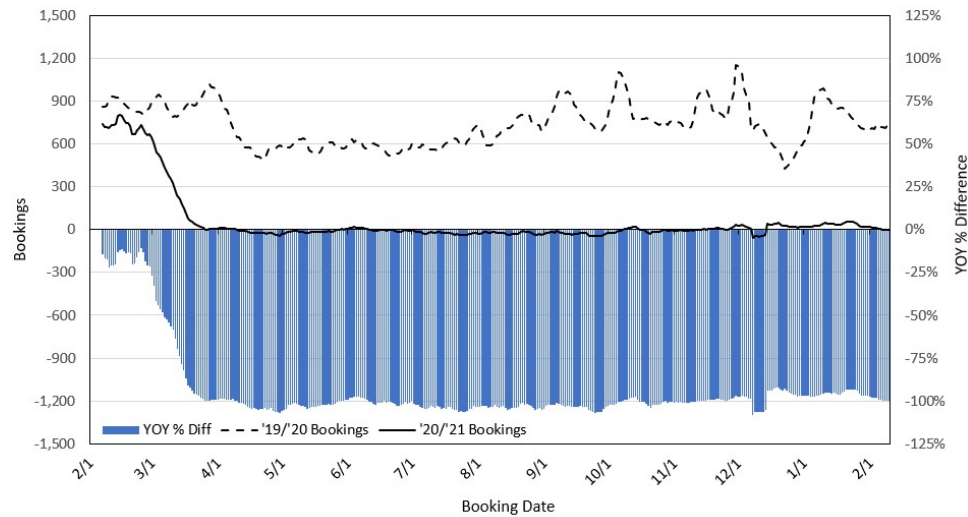
### Travel Agency Bookings to Hawaii for Future Arrivals\* Based on a 7-day Moving Average, February 10, 2021 Japan



\*Future Arrivals refers to all arrivals that are 'future' relative to the referenced booking date.  
Source: Global Agency Pro

Update: Feb 10, 2021

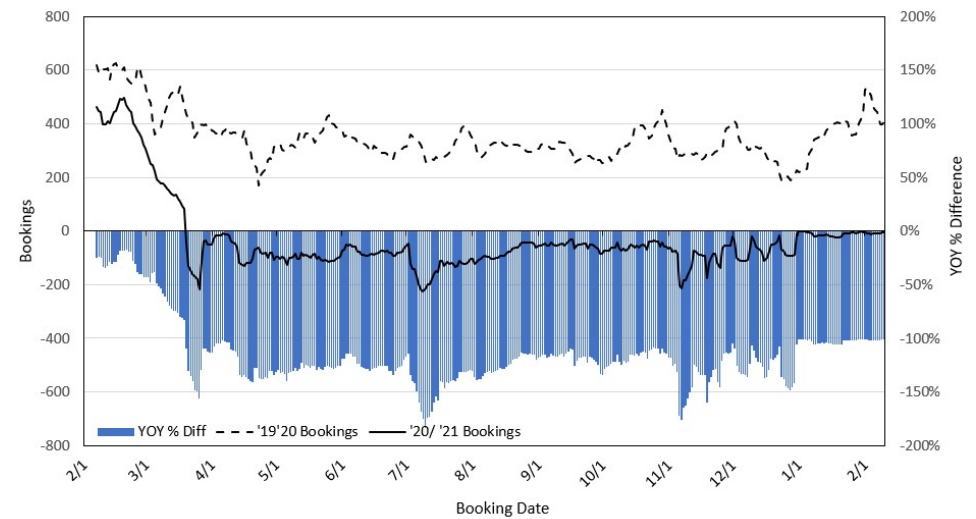
### Travel Agency Bookings to Hawaii for Future Arrivals\* Based on a 7-day Moving Average, February 10, 2021 Canada



\*Future Arrivals refers to all arrivals that are 'future' relative to the referenced booking date.  
Source: Global Agency Pro

Update: Feb 10, 2021

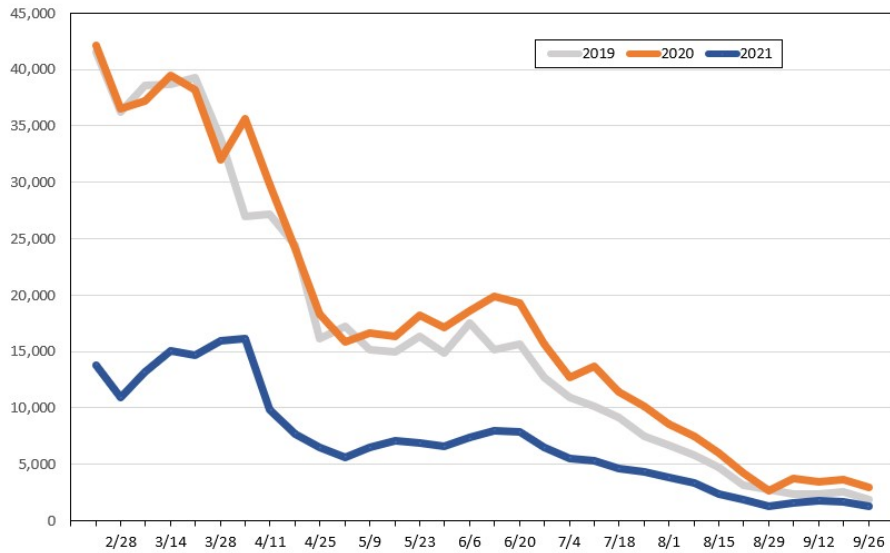
### Travel Agency Bookings to Hawaii for Future Arrivals\* Based on a 7-day Moving Average, February 10, 2021 Australia



\*Future Arrivals refers to all arrivals that are 'future' relative to the referenced booking date.  
Source: Global Agency Pro

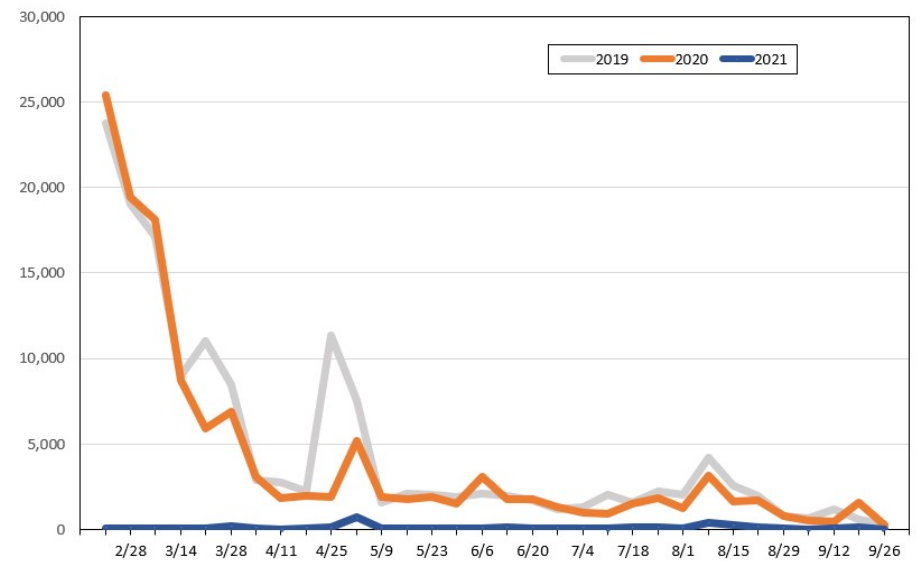
Update: Feb 10, 2021

**Travel Agency Weekly Bookings for Future Travel to Hawai'i as of February 10, 2021**  
U.S.



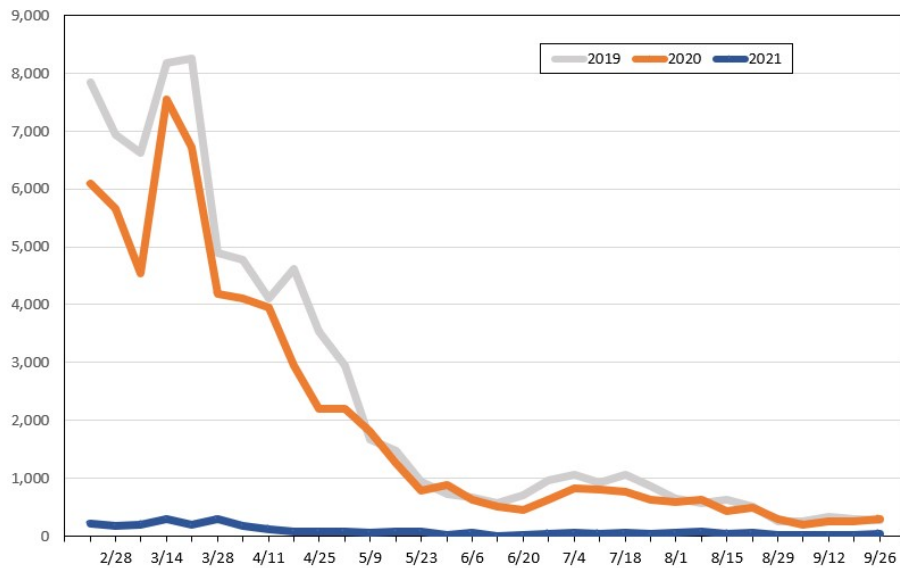
Source: Global Agency Pro, as of February 10, 2021

**Travel Agency Weekly Bookings for Future Travel to Hawai'i as of February 10, 2021**  
Japan



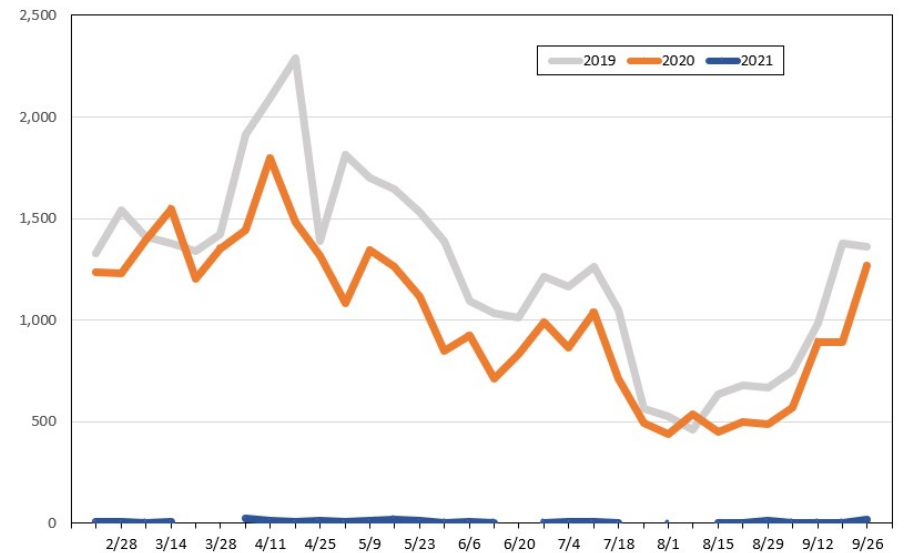
Source: Global Agency Pro, as of February 10, 2021

**Travel Agency Weekly Bookings for Future Travel to Hawai'i as of February 10, 2021**  
Canada



Source: Global Agency Pro, as of February 10, 2021

**Travel Agency Weekly Bookings for Future Travel to Hawai'i as of February 10, 2021**  
Australia



Source: Global Agency Pro, as of February 10, 2021