

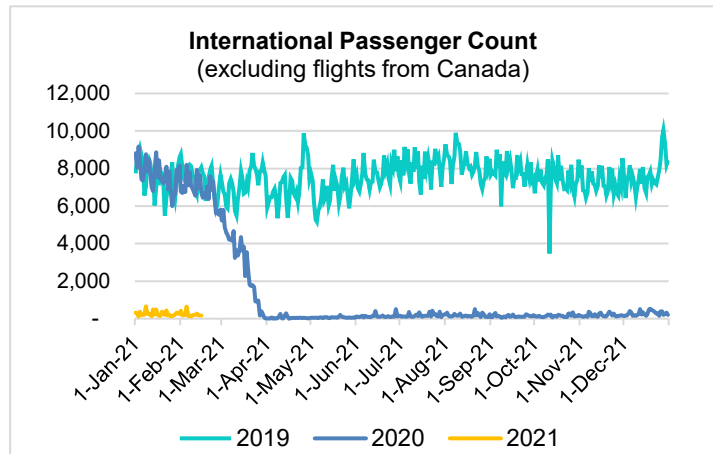
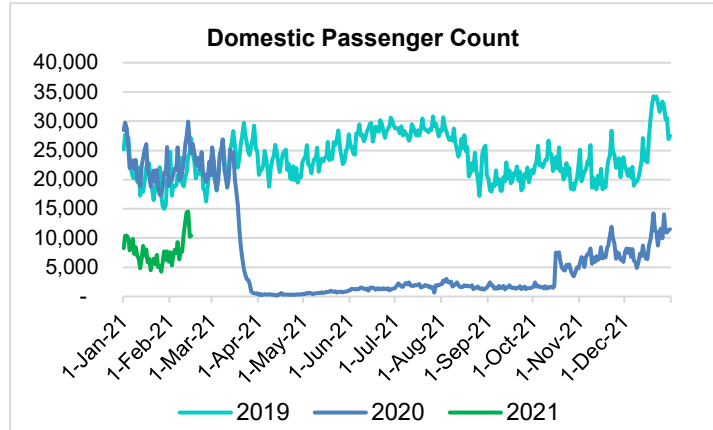
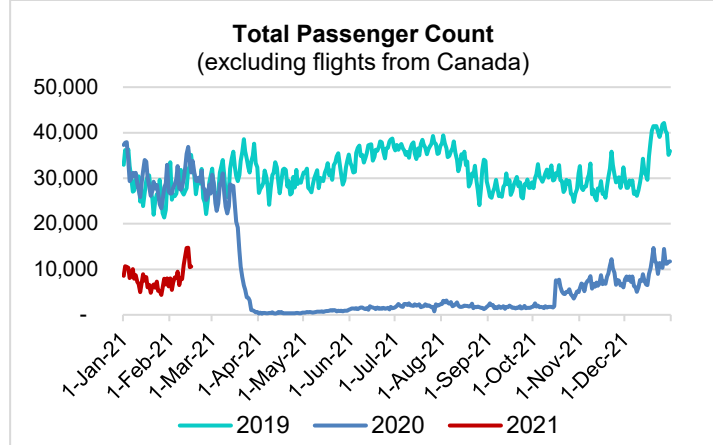
HTA COVID-19 UPDATE

(Issued: 2/16/21 @ 4:30pm)

Reason for Trip by Arrival Airport - Transpacific Screened Passengers as of 02/15/21	Honolulu (HNL)	Kahului (OGG)	Kona (KOA)	Lihue (LIH)	Grand Total
Airline Crew	400	206	112	22	740
Connecting Flight (Transit)	391	14	1	0	406
Corporate Meeting	9	4	8	0	21
Essential Worker	162	22	14	2	200
Honeymoon	5	13	1	0	19
Incentive Trip	5	1	0	0	6
Intended Resident	88	23	18	2	131
Military or Federal Government	111	5	0	2	118
Other	53	17	14	1	85
Other Business	97	30	25	7	159
Pleasure/Vacation	2,918	2,721	1,173	58	6,870
Returning Resident	1,194	176	100	14	1,484
To Attend School	19	0	1	0	20
To Get Married	7	8	2	0	17
Visiting Friends or Relatives	857	230	201	27	1,315
Grand Total	6,316	3,470	1,670	135	11,591

Source: Safe Travels program developed by the State of Hawaii Office of Enterprise Technology Services

Note: The data is preliminary and subject to change



Daily Passenger Count Table

02/15/2021	Domestic	International	Total
Oahu	5830	166	5996
Maui	3088		3088
Island of Hawaii	1390		1390
Kauai	107		107
State	10415	166	10581

Novel Coronavirus in Hawaii

COVID-19 Positive Cases

Cumulative totals as of 12:00pm on February 16, 2021

Total Confirmed Cases	26,906* (17 new)
Hawaii	2,216
Kauai	179
Lanai	108
Maui	1947† 1950†
Molokai	27
Oahu	21,633
Out of State	793
Pending	0
Required Hospitalization	1800‡
Hawaii Deaths	426
Cases in the past 14 days	850*

Footnotes for COVID-19 Cases

*As a result of updated information, two cases on Oahu were removed from the counts.

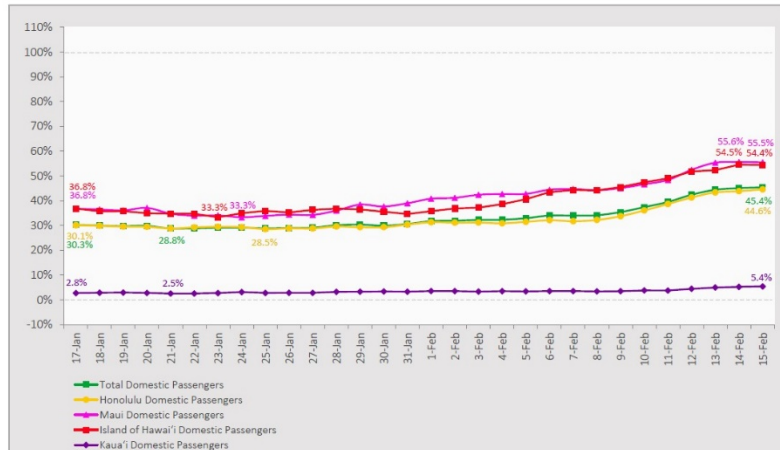
**Using cases reported in the past 14 days provides a rough approximation of the number of cases currently meeting criteria for isolation. This proxy number for "active cases" resolves classification issues for cases unable to be reached or who are out of jurisdiction, for whom precise release from isolation date may not be possible to determine. It is also not influenced by lags in data entry. (This total does not include Hawaii residents diagnosed outside of Hawaii)

†One case is a Lanai resident whose exposure is on Maui Island and who will be remaining on Maui Island for the interim.

‡Includes Hawaii residents hospitalized out of state.

7-Day Domestic by Island Moving Average Daily Passenger Volume

2021 Volume as Percentage of 2020 Volume
Through February 15, 2021



Source: HVCB analysis based on data from DBEDT
Note: Passenger volume figures include both visitors and residents.

Domestic by Island Month-to-Date and Year-to-Date Daily Passenger Volume

2021 Volume versus 2020 Volume
Through February 15, 2021

February 2021 (Month-to-Date through February 15)

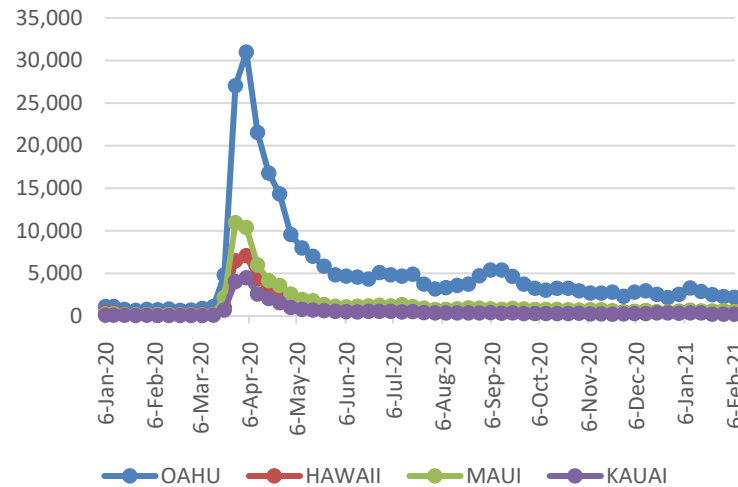
	2021	2020	Volume Change	Percent Change
Honolulu	71,474	181,616	-110,142	-60.6%
Maui County	45,647	88,287	-42,640	-48.3%
Island of Hawai'i	21,276	42,377	-21,101	-49.8%
Kaua'i	1,344	29,843	-28,499	-95.5%
Total	139,741	342,123	-202,382	-59.2%

2021 (Year-to-Date through February 15)

	2021	2020	Volume Change	Percent Change
Honolulu	196,244	566,442	-370,198	-65.4%
Maui County	108,383	259,759	-151,376	-58.3%
Island of Hawai'i	51,197	126,241	-75,044	-59.4%
Kaua'i	3,181	87,974	-84,793	-96.4%
Total	359,005	1,040,416	-681,411	-65.5%

Source: HVCB analysis based on data from DBEDT
Note: Passenger volume figures include both visitors and residents. Total includes other international passengers.

2021 Initial Weekly Unemployment Claims by Island



Weekly Unemployment Initial Claims: February 6, 2021

State of Hawaii	3,637
C&C of Oahu	2,187
Honolulu	946
Kaneohe	211
Waipahu	1030
Hawaii County	525
Hilo	316
Kona	209
Maui County	510
Wailuku	499
Molokai	11
Kauai County	219
Agent (filed in Hawaii against another state)	196

News Highlights

February 16, 2021

Honolulu Star Advertiser: [How and when to get vaccinated in Hawaii](#)

KHON2: [CDC gives guidance on using pain relievers like Motrin, Tylenol with COVID-19 vaccine](#)

Honolulu Civil Beat: [Hawaii Virus Tracker — Feb. 15: 35 New COVID-19 Cases](#)

Honolulu Civil Beat: [Lee Cataluna: Kauai Should Get Special Rules Because It Is Special](#)

West Hawaii Today: [No new COVID-19 cases, hospitalizations reported on Big Island](#)

Big Island Now: [Big Island Reports Zero Cases of COVID Monday](#)

CNN: [The destinations open to travelers vaccinated against Covid-19](#)

Skift: [The Role of Vaccines in the Travel Rebound: Latest Skift Recovery Index](#)

Travel Weekly: [Covid restrictions aren't spoiling Hawaii vacations, study finds](#)

Helpful Resources

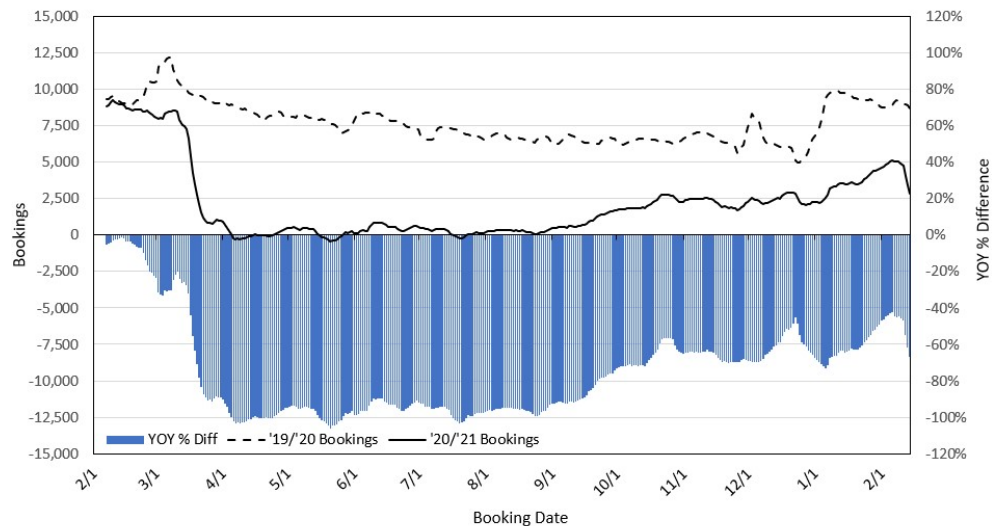
Department of Health
<https://hawaiiicovid19.com/>

Hawaii Tourism Authority
<https://www.hawaiitourismauthority.org/covid-19-updates/>

Dept. of Business, Economic Development & Tourism
<https://dbedt.hawaii.gov/economic/covid19/>

Department of Transportation
<https://hidot.hawaii.gov/coronavirus/>

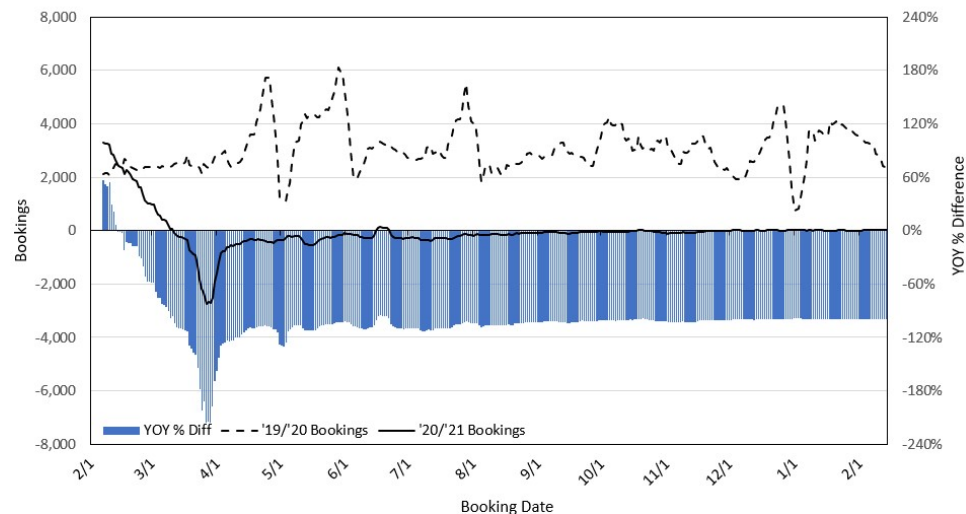
Travel Agency Bookings to Hawaii for Future Arrivals* Based on a 7-day Moving Average, as of February 14, 2021 U.S.



*Future Arrivals refers to all arrivals that are 'future' relative to the referenced booking date.
Source: Global Agency Pro

Update: Feb 14, 2021

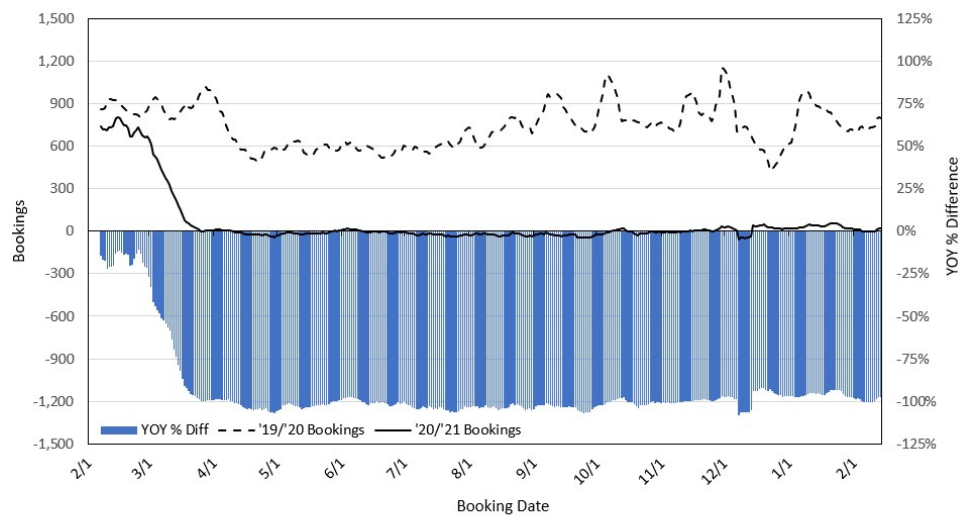
Travel Agency Bookings to Hawaii for Future Arrivals* Based on a 7-day Moving Average, as of February 14, 2021 Japan



*Future Arrivals refers to all arrivals that are 'future' relative to the referenced booking date.
Source: Global Agency Pro

Update: Feb 14, 2021

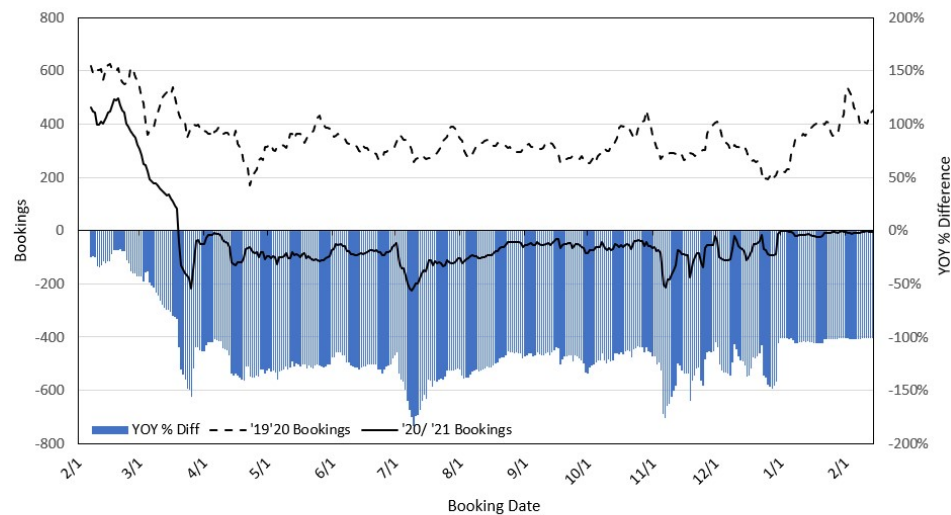
Travel Agency Bookings to Hawaii for Future Arrivals* Based on a 7-day Moving Average, as of February 14, 2021 Canada



*Future Arrivals refers to all arrivals that are 'future' relative to the referenced booking date.
Source: Global Agency Pro

Update: Feb 14, 2021

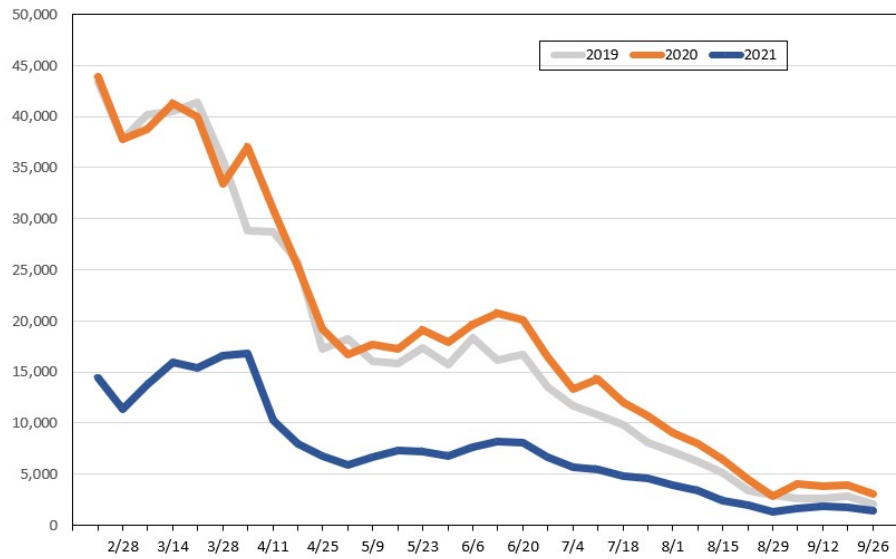
Travel Agency Bookings to Hawaii for Future Arrivals* Based on a 7-day Moving Average, as of February 14, 2021 Australia



*Future Arrivals refers to all arrivals that are 'future' relative to the referenced booking date.
Source: Global Agency Pro

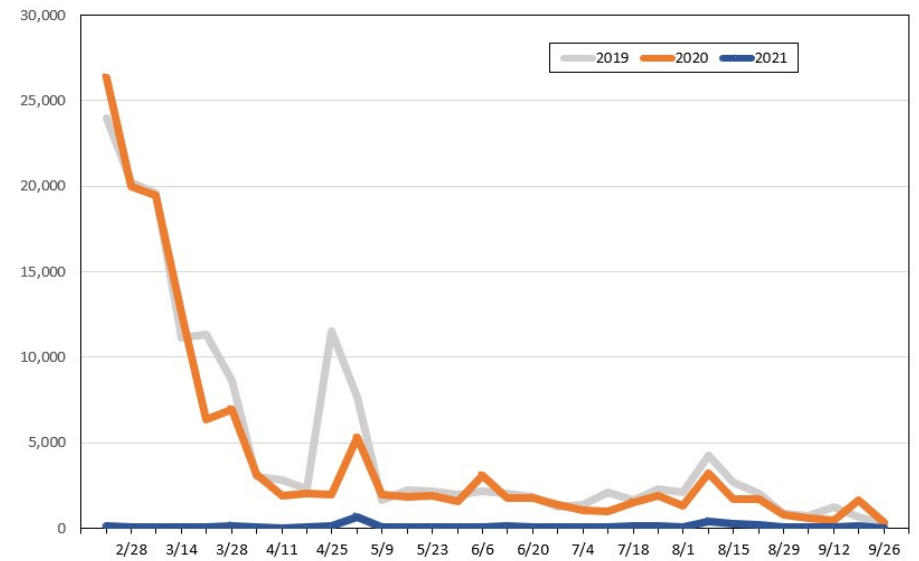
Update: Feb 14, 2021

Travel Agency Weekly Bookings for Future Travel to Hawai'i as of February 14, 2021
U.S.



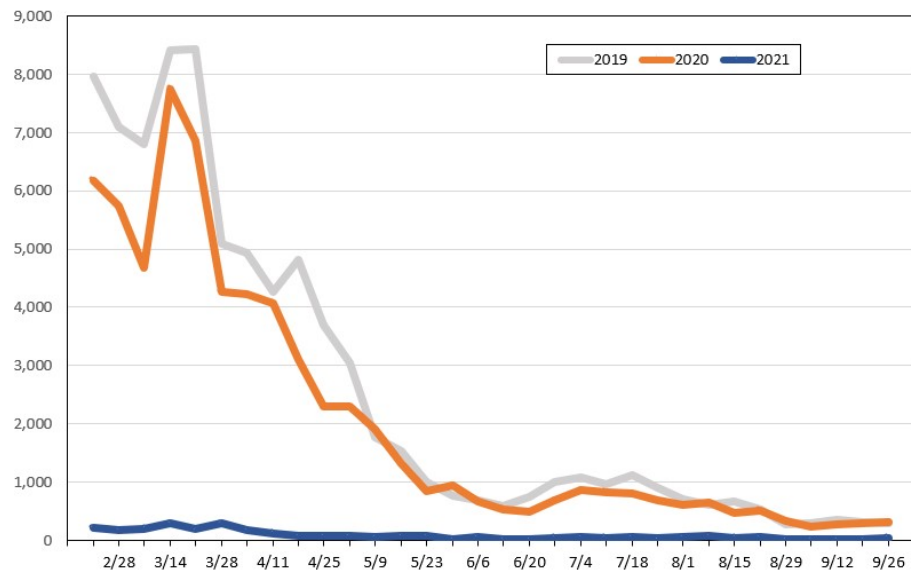
Source: Global Agency Pro, as of February 14, 2021

Travel Agency Weekly Bookings for Future Travel to Hawai'i as of February 14, 2021
Japan



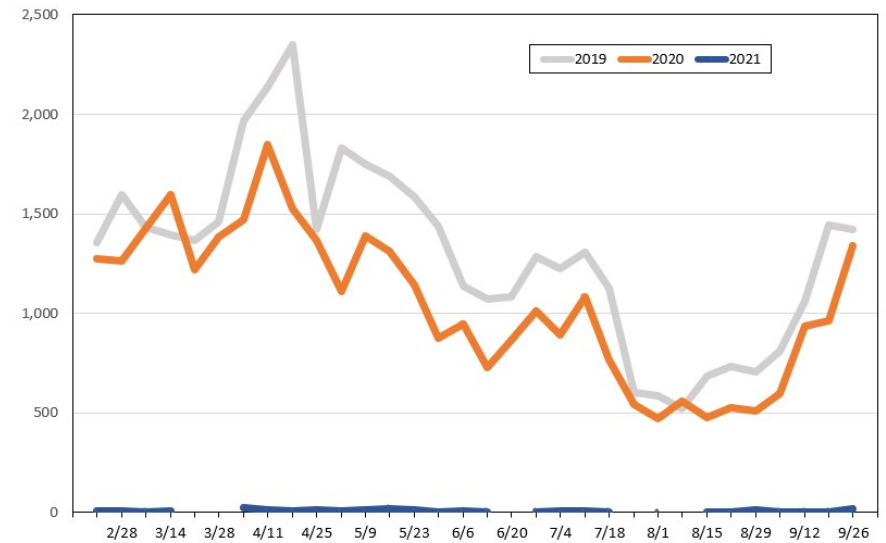
Source: Global Agency Pro, as of February 14, 2021

Travel Agency Weekly Bookings for Future Travel to Hawai'i as of February 14, 2021
Canada



Source: Global Agency Pro, as of February 14, 2021

Travel Agency Weekly Bookings for Future Travel to Hawai'i as of February 14, 2021
Australia



Source: Global Agency Pro, as of February 14, 2021