

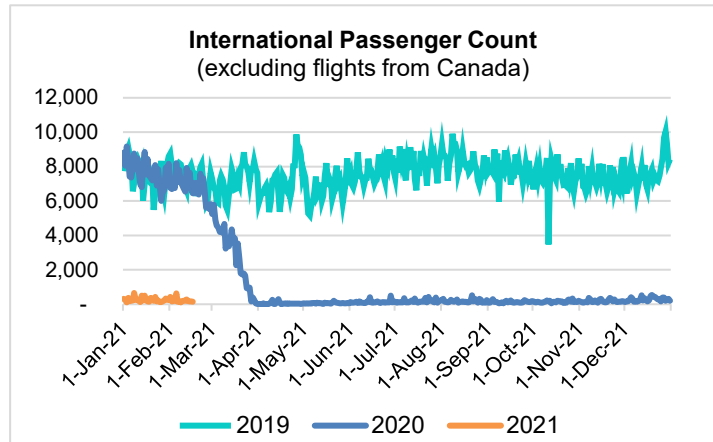
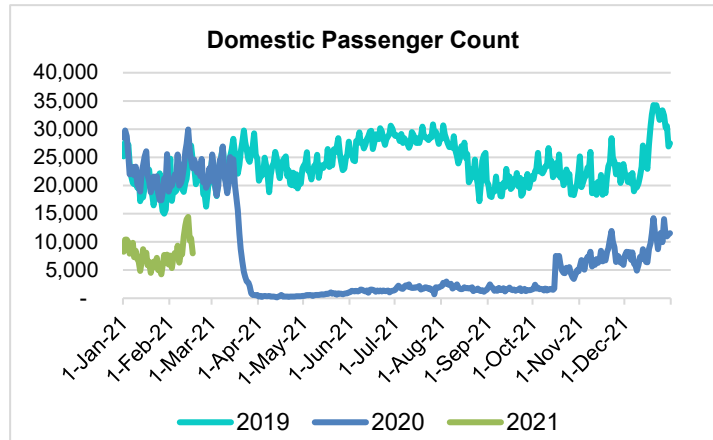
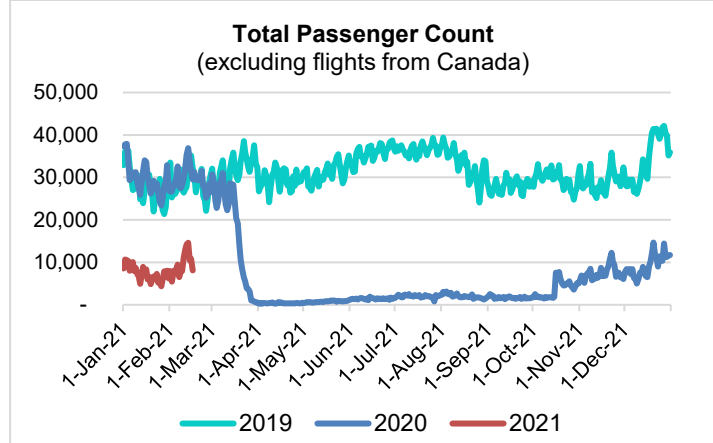
HTA COVID-19 UPDATE

(Issued: 2/17/21 @ 4:30pm)

Reason for Trip by Arrival Airport - Transpacific Screened Passengers as of 02/16/21	Honolulu (HNL)	Kahului (OGG)	Kona (KOA)	Lihue (LIH)	Grand Total
Airline Crew	361	163	91	22	637
Connecting Flight (Transit)	409	32	2	1	444
Corporate Meeting	6	7	1	1	15
Essential Worker	96	17	8	3	124
Honeymoon	10	6	0	0	16
Incentive Trip	0	3	0	0	3
Intended Resident	62	14	24	4	104
Military or Federal Government	69	0	0	2	71
Other	30	13	7	0	50
Other Business	67	22	16	3	108
Pleasure/Vacation	1,967	2,013	887	38	4,905
Returning Resident	969	133	110	18	1,230
To Attend School	7	0	1	0	8
To Get Married	2	7	0	1	10
Visiting Friends or Relatives	713	233	215	14	1,175
Grand Total	4,768	2,663	1,362	107	8,900

Source: Safe Travels program developed by the State of Hawaii Office of Enterprise Technology Services

Note: The data is preliminary and subject to change



Daily Passenger Count Table

02/16/2021	Domestic	International	Total
Oahu	4287	153	4440
Maui	2345		2345
Island of Hawaii	1256		1256
Kauai	80		80
State	7968	153	8121

Novel Coronavirus in Hawaii

COVID-19 Positive Cases

Cumulative totals as of 12:00pm on February 17, 2021

Total Confirmed Cases	26,935* (29 new)
Hawaii	2,217
Kauai	179
Lanai	108
Maui	1960†
Molokai	26
Oahu	21,650
Out of State	795
Pending	0
Required Hospitalization	1804‡
Hawaii Deaths	427
Cases in the past 14 days	810*

Footnotes for COVID-19 Cases

*As a result of updated information, one case out-of-state was recategorized to Oahu. Due to an interruption of electronic laboratory reporting, yesterday's case count was lower than the true number of new cases. We expect to see catch-up reporting of the additional cases over the next 1 to 2 days.

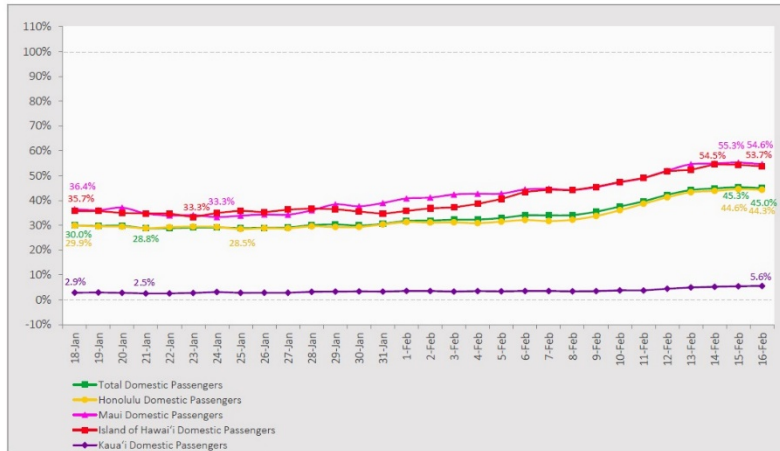
**Using cases reported in the past 14 days provides a rough approximation of the number of cases currently meeting criteria for isolation. This proxy number for "active cases" resolves classification issues for cases unable to be reached or who are out of jurisdiction, for whom precise release from isolation date may not be possible to determine. It is also not influenced by lags in data entry. (This total does not include Hawaii residents diagnosed outside of Hawaii)

†One case is a Lanai resident whose exposure is on Maui Island and who will be remaining on Maui Island for the interim.

‡Includes Hawaii residents hospitalized out of state.

7-Day Domestic by Island Moving Average Daily Passenger Volume

2021 Volume as Percentage of 2020 Volume
Through February 16, 2021



Source: HVCB analysis based on data from DBEDT
Note: Passenger volume figures include both visitors and residents.

Domestic by Island Month-to-Date and Year-to-Date Daily Passenger Volume

2021 Volume versus 2020 Volume
Through February 16, 2021

February 2021 (Month-to-Date through February 16)

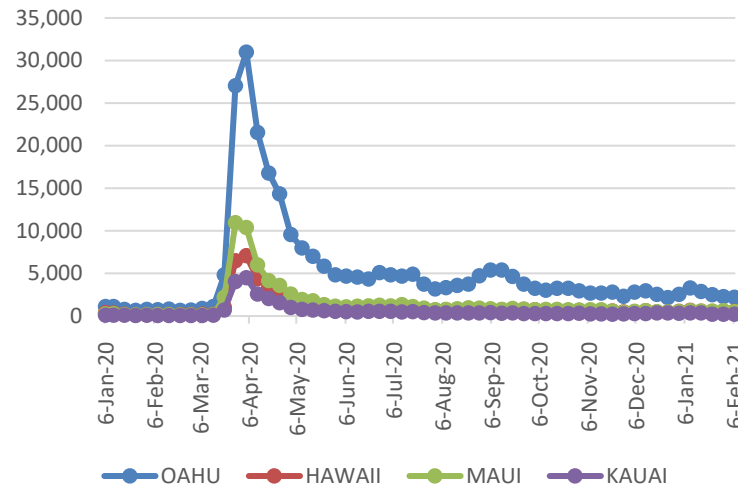
	2021	2020	Volume Change	Percent Change
Honolulu	75,761	195,285	-119,524	-61.2%
Maui County	47,888	95,380	-47,492	-49.8%
Island of Hawai'i	22,532	45,687	-23,155	-50.7%
Kaua'i	1,424	31,907	-30,483	-95.5%
Total	147,605	368,259	-220,654	-59.9%

2021 (Year-to-Date through February 16)

	2021	2020	Volume Change	Percent Change
Honolulu	200,531	580,111	-379,580	-65.4%
Maui County	110,624	266,852	-156,228	-58.5%
Island of Hawai'i	52,453	129,551	-77,098	-59.5%
Kaua'i	3,261	90,038	-86,777	-96.4%
Total	366,869	1,066,552	-699,683	-65.6%

Source: HVCB analysis based on data from DBEDT
Note: Passenger volume figures include both visitors and residents. Total includes other international passengers.

2021 Initial Weekly Unemployment Claims by Island



Weekly Unemployment Initial Claims: February 6, 2021

State of Hawaii	3,637
C&C of Oahu	2,187
Honolulu	946
Kaneohe	211
Waipahu	1030
Hawaii County	525
Hilo	316
Kona	209
Maui County	510
Wailuku	499
Molokai	11
Kauai County	219
Agent (filed in Hawaii against another state)	196

News Highlights

February 17, 2021

Hawaii News Now: [Bad weather on the mainland delays vaccine shipments to Hawaii](#)

Big Island Now: [Vaccine Passport Program Won't Discriminate](#)

West Hawaii Today: [Green: 'Really large percentage' of population should be COVID-immune by this summer](#)

Hawaii Tribune-Herald: [Crippling storm hampers vaccinations as FEMA opens new sites](#)

The Maui News: [Health officials warn of COVID-19 scams](#)

The Mercury News: [Covid-19 U.S. travel restrictions state by state](#)

New York Post: [No state records more than 10,000 weekly COVID-19 cases for first time this year](#)

The New York Times: [A Different Early-Bird Special: Have Vaccine, Will Travel](#)

Travel Weekly: [Alohilani Resort Waikiki Beach introduces Covid-testing concierge service](#)

Helpful Resources

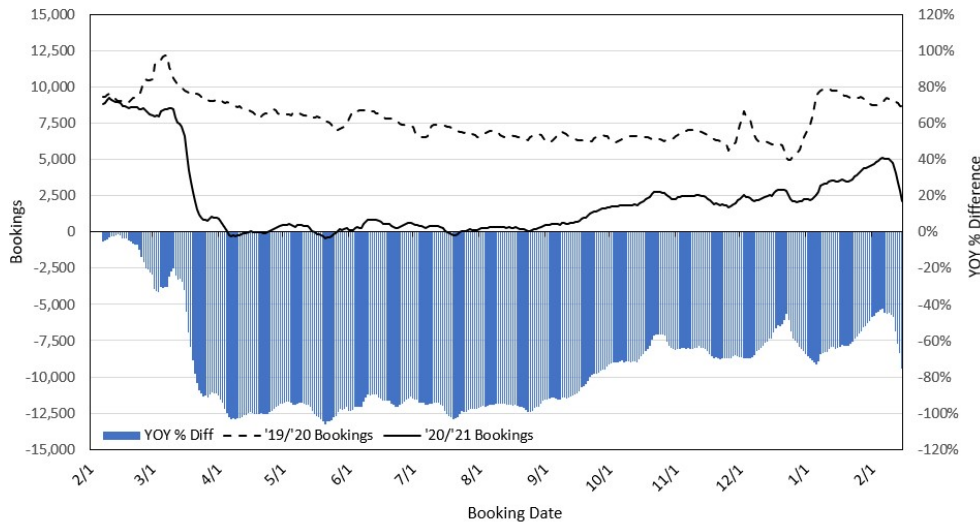
Department of Health
<https://hawaiiicovid19.com/>

Hawaii Tourism Authority
<https://www.hawaiitourismauthority.org/covid-19-updates/>

Dept. of Business, Economic Development & Tourism
<https://dbedt.hawaii.gov/economic/covid19/>

Department of Transportation
<https://hidot.hawaii.gov/coronavirus/>

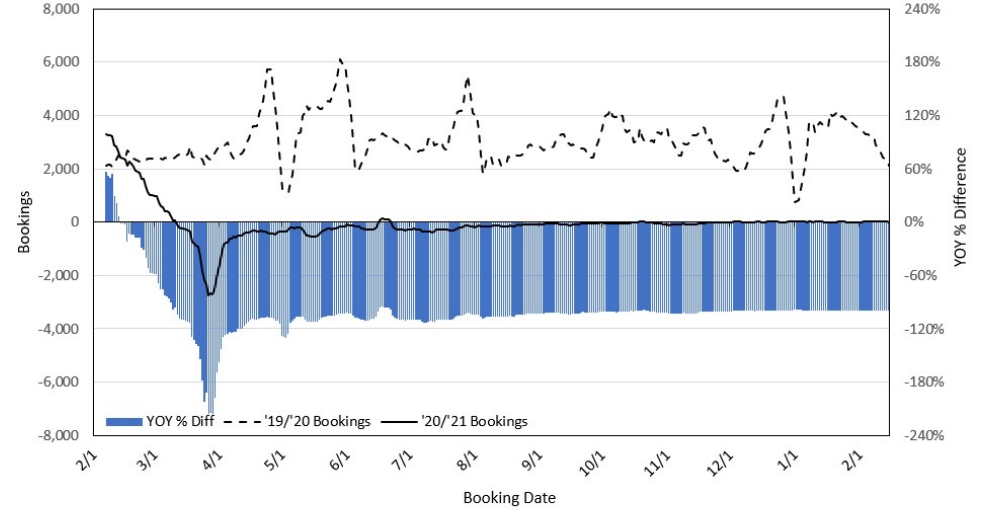
Travel Agency Bookings to Hawaii for Future Arrivals* Based on a 7-day Moving Average as of February 15, 2021 U.S.



*Future Arrivals refers to all arrivals that are 'future' relative to the referenced booking date.
Source: Global Agency Pro

Update: Feb 15, 2021

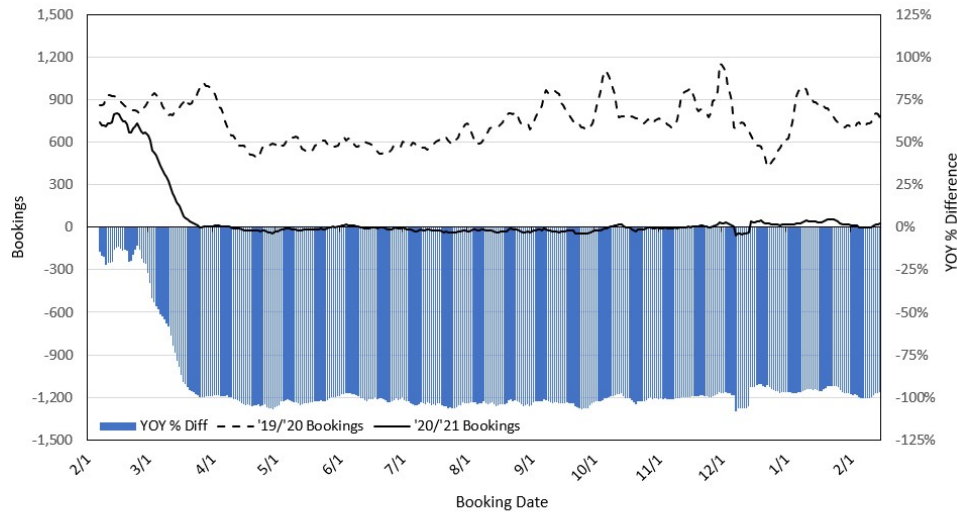
Travel Agency Bookings to Hawaii for Future Arrivals* Based on a 7-day Moving Average as of February 15, 2021 Japan



*Future Arrivals refers to all arrivals that are 'future' relative to the referenced booking date.
Source: Global Agency Pro

Update: Feb 15, 2021

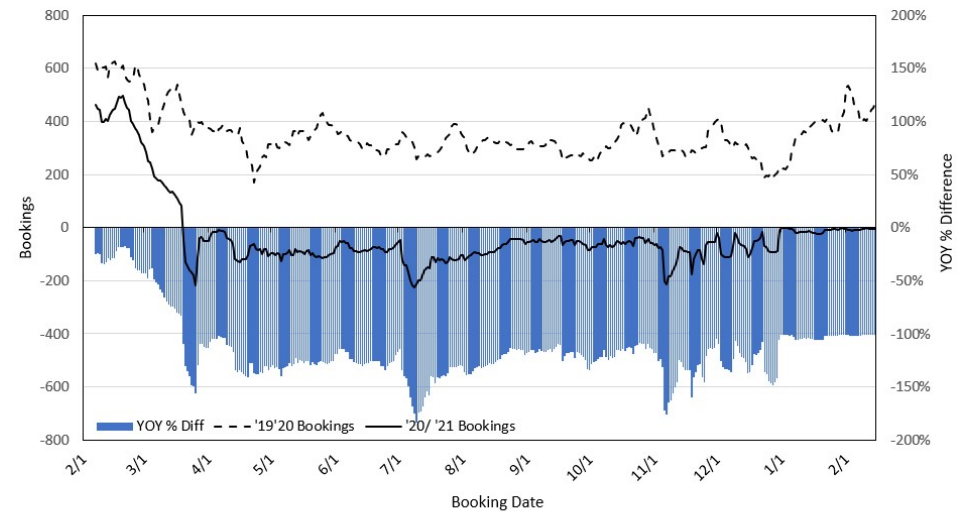
Travel Agency Bookings to Hawaii for Future Arrivals* Based on a 7-day Moving Average as of February 15, 2021 Canada



*Future Arrivals refers to all arrivals that are 'future' relative to the referenced booking date.
Source: Global Agency Pro

Update: Feb 15, 2021

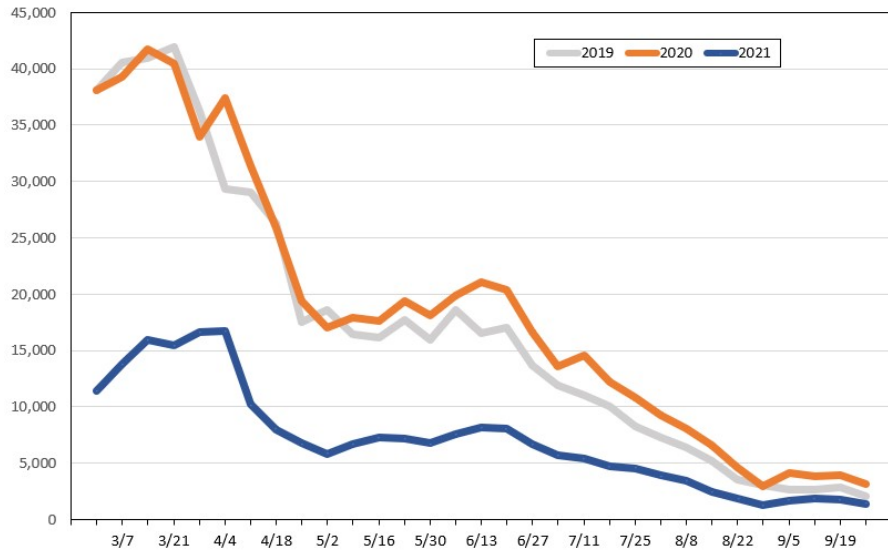
Travel Agency Bookings to Hawaii for Future Arrivals* Based on a 7-day Moving Average as of February 15, 2021 Australia



*Future Arrivals refers to all arrivals that are 'future' relative to the referenced booking date.
Source: Global Agency Pro

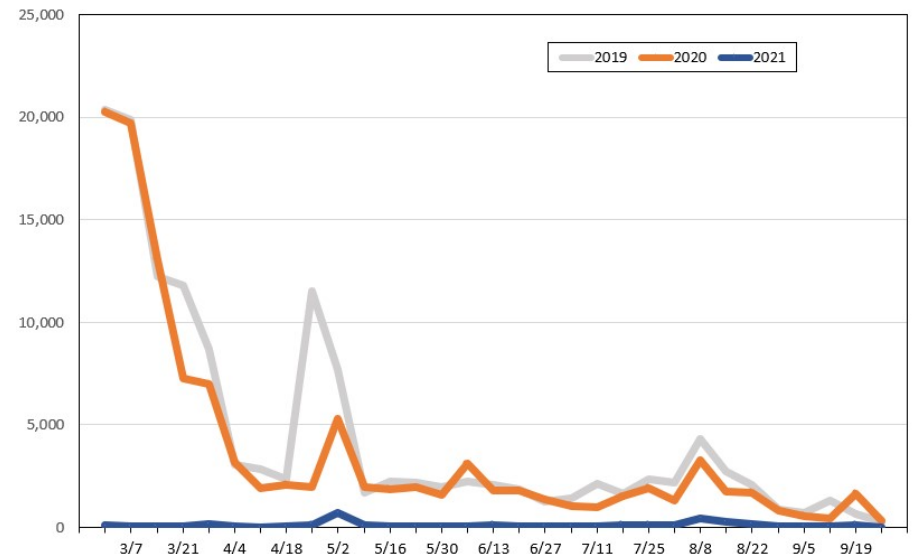
Update: Feb 15, 2021

Travel Agency Weekly Bookings for Future Travel to Hawai'i as of February 15, 2021
U.S.



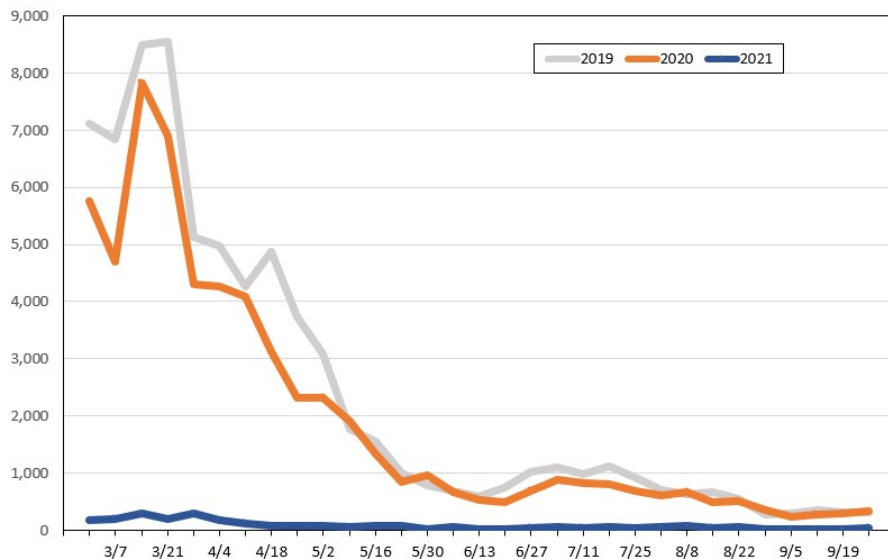
Source: Global Agency Pro, as of February 15, 2021

Travel Agency Weekly Bookings for Future Travel to Hawai'i as of February 15, 2021
Japan



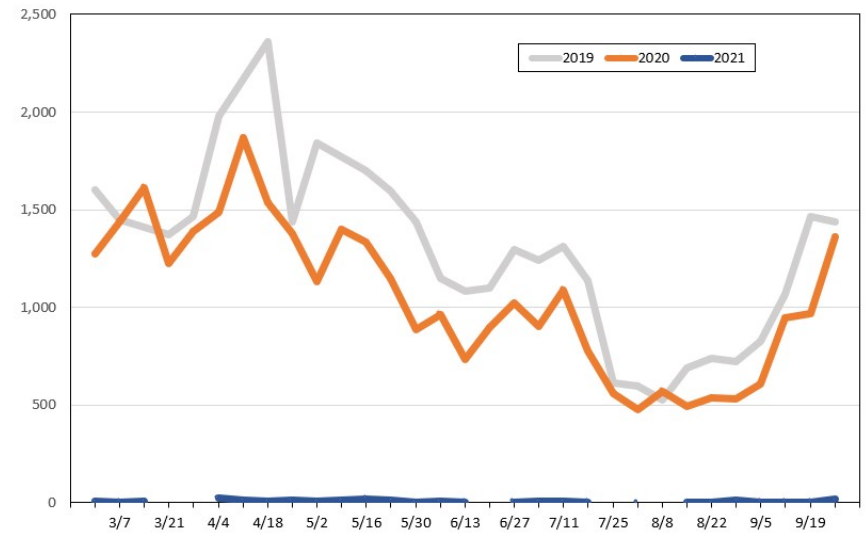
Source: Global Agency Pro, as of February 15, 2021

Travel Agency Weekly Bookings for Future Travel to Hawai'i as of February 15, 2021
Canada



Source: Global Agency Pro, as of February 15, 2021

Travel Agency Weekly Bookings for Future Travel to Hawai'i as of February 15, 2021
Australia



Source: Global Agency Pro, as of February 15, 2021