

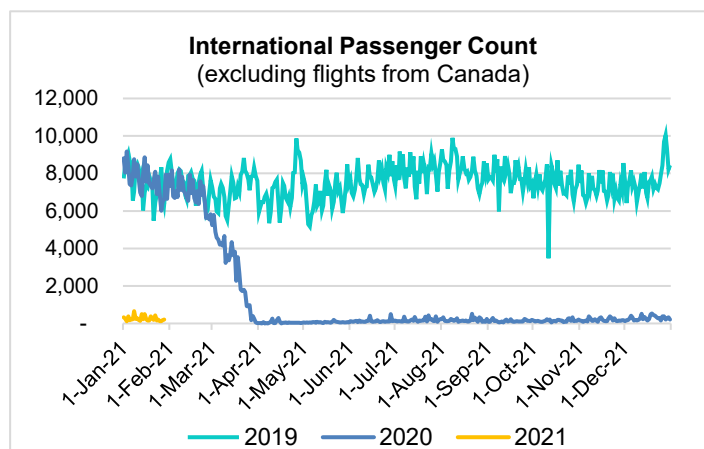
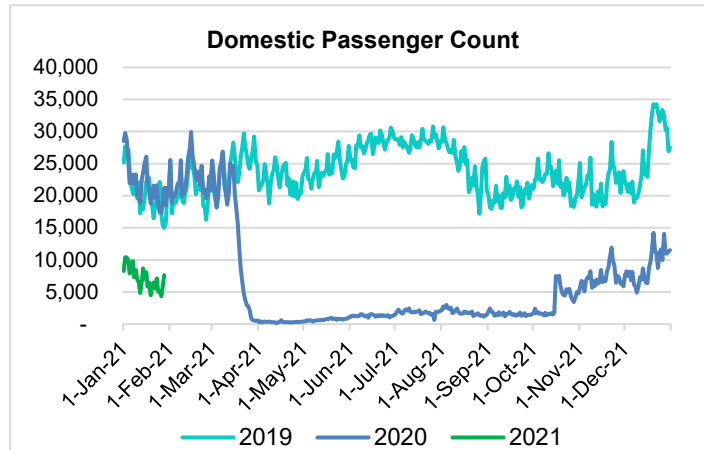
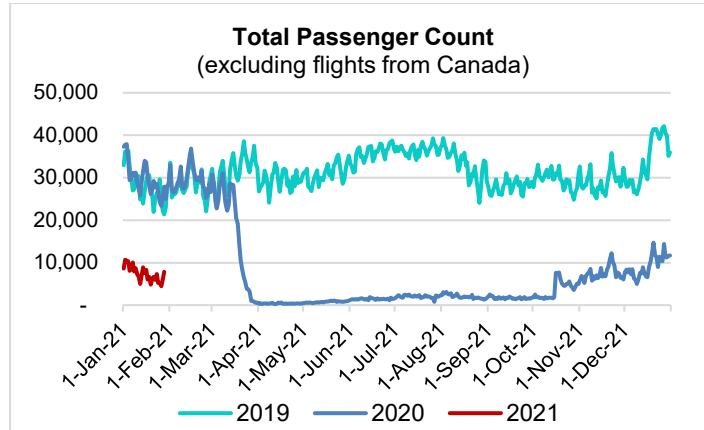
HTA COVID-19 UPDATE

(Issued: 1/29/21 @ 4:30pm)

Reason for Trip by Arrival Airport - Transpacific Screened Passengers as of 01/28/21	Honolulu (HNL)	Kahului (OGG)	Kona (KOA)	Lihue (LIH)	Grand Total
Airline Crew	437	182	95	13	727
Connecting Flight (Transit)	314	20	0	0	334
Corporate Meeting	4	5	2	0	11
Essential Worker	79	33	10	3	125
Honeymoon	6	6	0	0	12
Incentive Trip	1	3	12	0	16
Intended Resident	118	18	13	3	152
Military or Federal Government	83	1	0	0	84
Other	63	20	14	0	97
Other Business	69	25	12	2	108
Pleasure/Vacation	2,096	1,811	811	42	4,760
Returning Resident	729	159	80	20	988
Sports Event	3	0	0	0	3
To Attend School	17	0	0	0	17
To Get Married	8	0	3	0	11
Transit	2	0	0	0	2
Visiting Friends or Relatives	915	199	161	15	1,290
Grand Total	4,944	2,482	1,213	98	8,737

Source: Safe Travels program developed by the State of Hawaii Office of Enterprise Technology Services

Note: The data is preliminary and subject to change



Daily Passenger Count Table

01/28/2021	Domestic	International	Total
Oahu	4397	213	4610
Maui	2166		2166
Island of Hawaii	1006		1006
Kauai	78		78
State	7647	213	7860

Novel Coronavirus in Hawaii

COVID-19 Positive Cases

Cumulative totals as of 12:00pm on January 29, 2021

Total Confirmed Cases	25,656* (115 new)
Hawaii	2,144
Kauai	178
Lanai	107
Maui	1706†
Molokai	25
Oahu	20,782
Out of State	714
Pending	0
Required Hospitalization	1683‡
Hawaii Deaths	407
Cases in the past 14 days	1,501*

Footnotes for COVID-19 Cases

* As a result of updated information, one case from the Island of Hawaii was recategorized to out-of-state, and one case from Oahu was recategorized to Maui.

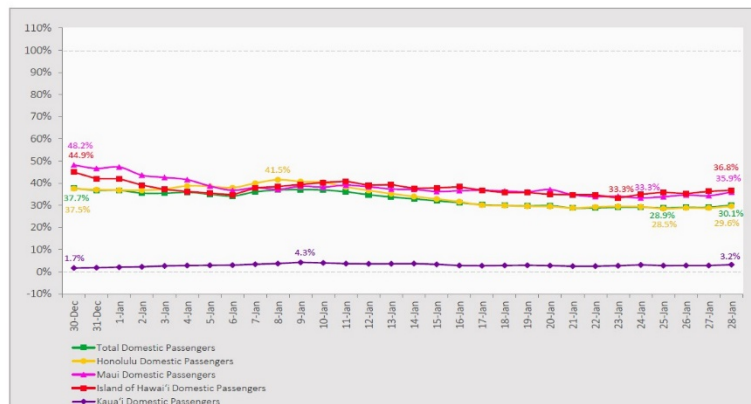
**Using cases reported in the past 14 days provides a rough approximation of the number of cases currently meeting criteria for isolation. This proxy number for "active cases" resolves classification issues for cases unable to be reached or who are out of jurisdiction, for whom precise release from isolation date may not be possible to determine. It is also not influenced by lags in data entry. (This total does not include Hawaii residents diagnosed outside of Hawaii)

†One case is a Lanai resident whose exposure is on Maui Island and who will be remaining on Maui Island for the interim.

‡Includes Hawaii residents hospitalized out of state.

7-Day Domestic by Island Moving Average Daily Passenger Volume

2021 Volume as Percentage of 2020 Volume
Through January 28, 2021



Source: HVCB analysis based on data from DBEDT
Note: Passenger volume figures include both visitors and residents.

Domestic by Island Month-to-Date and Year-to-Date Daily Passenger Volume

2021 Volume versus 2020 Volume
Through January 28, 2021

January 2021 (Month-to-Date through January 28)

	2021	2020	Volume Change	Percent Change
Honolulu	114,542	352,146	-237,604	-67.5%
Maui County	55,880	155,729	-99,849	-64.1%
Island of Hawai'i	27,169	76,864	-49,695	-64.7%
Kaua'i	1,623	52,699	-51,076	-96.9%
Total	199,214	637,438	-438,224	-68.7%

2021 (Year-to-Date through January 28)

	2021	2020	Volume Change	Percent Change
Honolulu	114,542	352,146	-237,604	-67.5%
Maui County	55,880	155,729	-99,849	-64.1%
Island of Hawai'i	27,169	76,864	-49,695	-64.7%
Kaua'i	1,623	52,699	-51,076	-96.9%
Total	199,214	637,438	-438,224	-68.7%

Source: HVCB analysis based on data from DBEDT
Note: Passenger volume figures include both visitors and residents. Total includes other international passengers.

News Highlights

January 29, 2021

KITV4: [Seven Hawaii National Guard members deployed to Washington D.C. tested positive for COVID-19](#)

The Maui News: [COVID-19 at a Glance](#)

West Hawaii Today: [State lawmakers are pushing to curb governors' virus powers](#)

Jeffsetter Travel: [Hawaii Adds South Korea to Safe Travels Program](#)

Yahoo News: ['Consider this a warning': Instagram influencers savagely mocked in tourism ad](#)

Travel Weekly: [Airbnb study: Safety, proximity will drive travel in 2021](#)

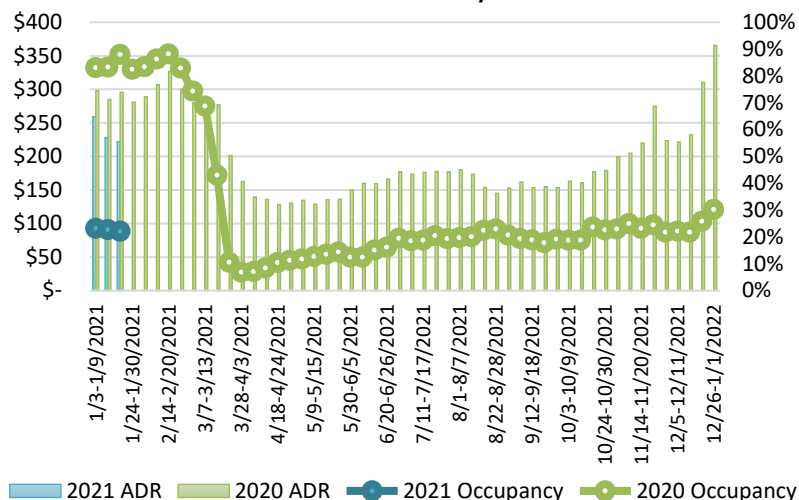
Travel Weekly: [SBE offers Covid testing at Miami and L.A. hotels](#)

Afar: [Hyatt Now Offers Free COVID Testing at All Its Mexico, Costa Rica, and Caribbean Hotels](#)

Forbes: [Latest Coronavirus Travel Restrictions January 2021](#)

eTurbo News: [Hawaii tourism severely impacted by COVID-19 pandemic](#)

State of Hawai'i Hotel Performance by Week - 2021 vs 2020



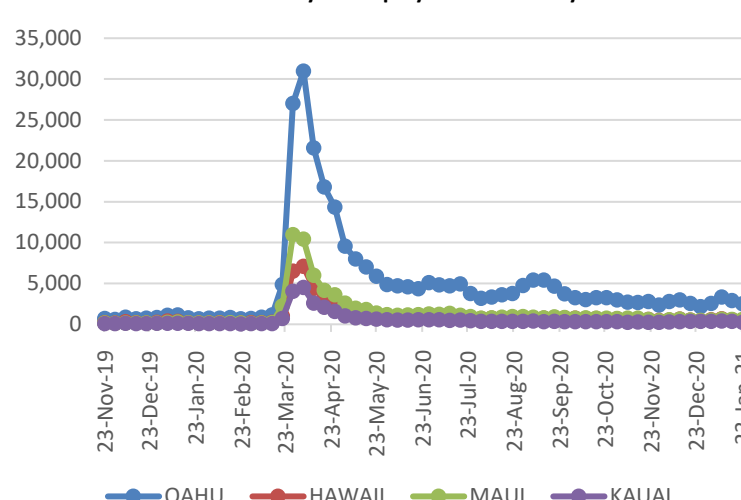
Source: STR, Inc. © Copyright 2021 Hawaii'i Tourism Authority

Hawaii Hotel Performance Info:

For the week of January 17 – January 23, 2021

	Occupancy	ADR	RevPAR
State of Hawaii	22.1%	\$221.90	\$48.99
Oahu	21.7%	\$158.77	\$34.45
Maui County	20.1%	\$383.23	\$77.04
Kauai County	19.7%	\$165.50	\$32.54
Island of Hawaii	28.8%	\$222.52	\$64.16

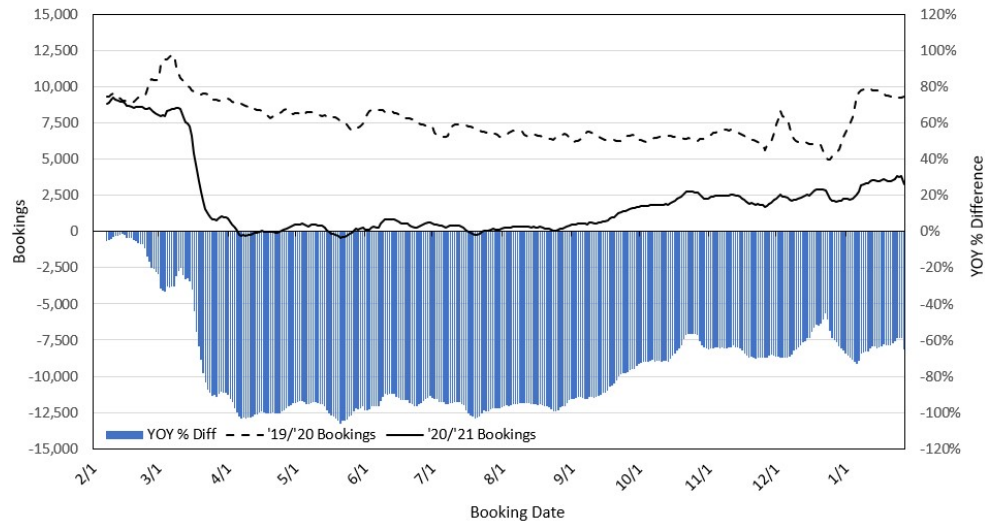
2021 Initial Weekly Unemployment Claims by Island



Weekly Unemployment Initial Claims: January 23, 2021

State of Hawaii	3,927
C&C of Oahu	2,482
Hawaii County	499
Maui County	572
Kauai County	218
Agent (filed in Hawaii against another state)	156

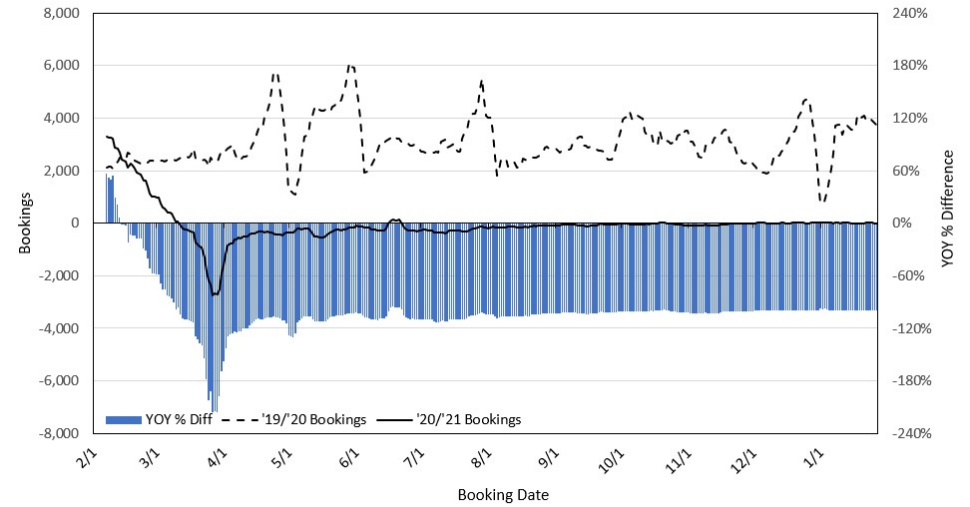
Travel Agency Bookings to Hawaii for Future Arrivals* Based on a 7-day Moving Average, as of January 27, 2021 U.S.



*Future Arrivals refers to all arrivals that are 'future' relative to the referenced booking date.
Source: Global Agency Pro

Update: Jan 27, 2021

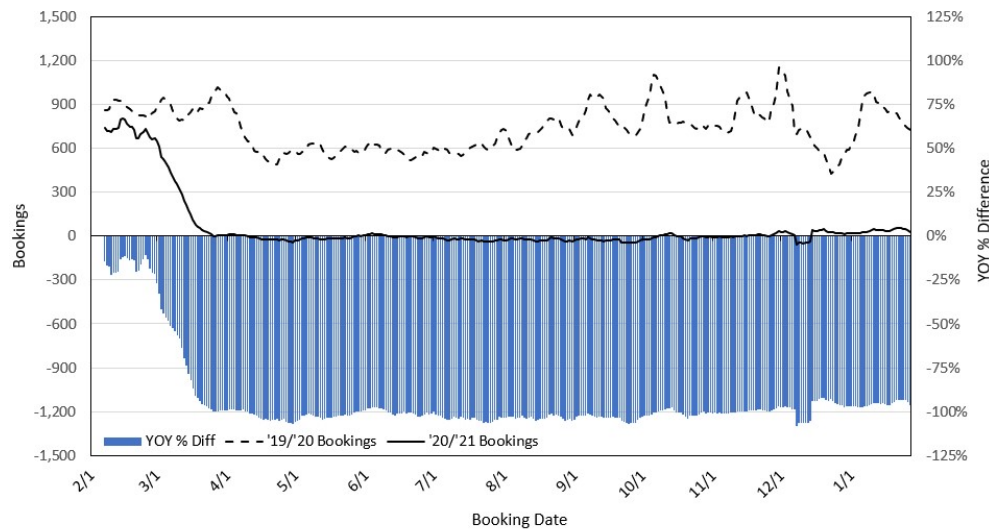
Travel Agency Bookings to Hawaii for Future Arrivals* Based on a 7-day Moving Average, as of January 27, 2021 Japan



*Future Arrivals refers to all arrivals that are 'future' relative to the referenced booking date.
Source: Global Agency Pro

Update: Jan 27, 2021

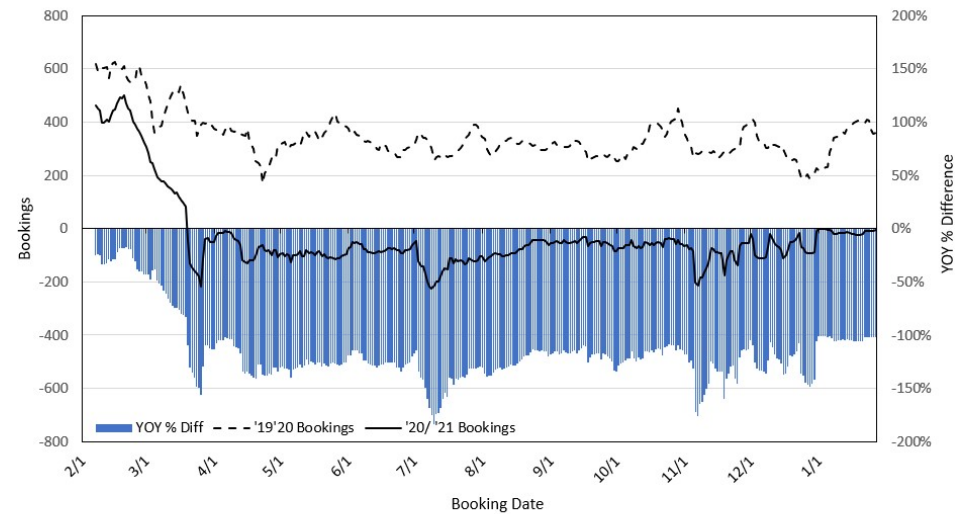
Travel Agency Bookings to Hawaii for Future Arrivals* Based on a 7-day Moving Average, as of January 27, 2021 Canada



*Future Arrivals refers to all arrivals that are 'future' relative to the referenced booking date.
Source: Global Agency Pro

Update: Jan 27, 2021

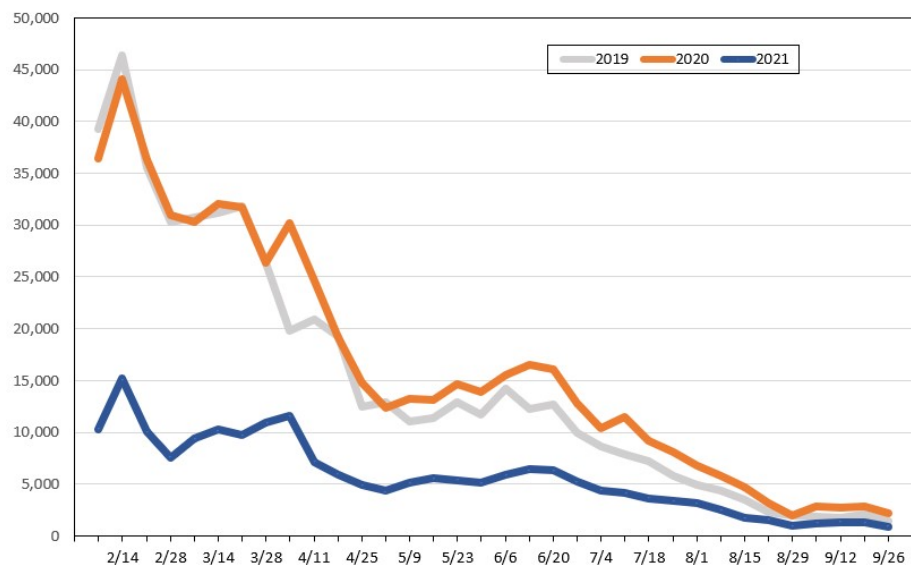
Travel Agency Bookings to Hawaii for Future Arrivals* Based on a 7-day Moving Average, as of January 27, 2021 Australia



*Future Arrivals refers to all arrivals that are 'future' relative to the referenced booking date.
Source: Global Agency Pro

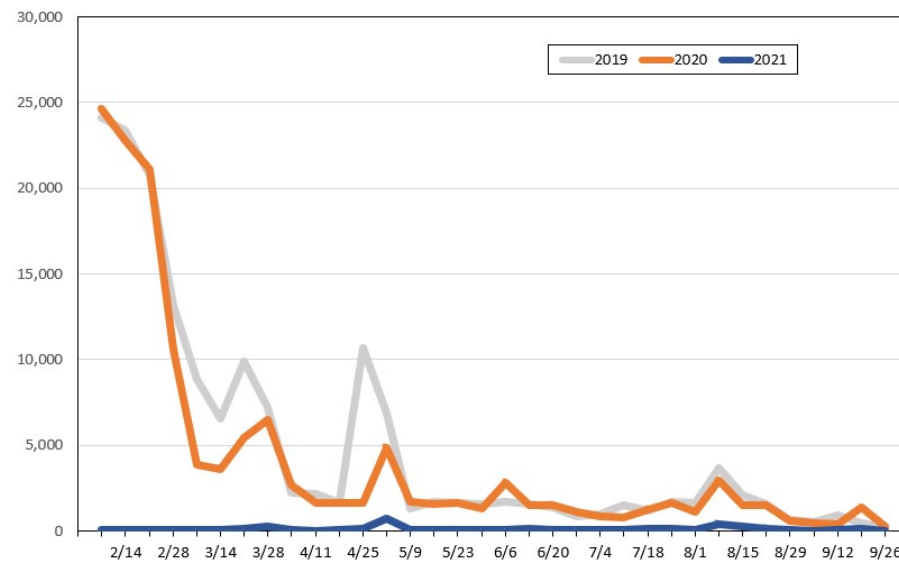
Update: Jan 27, 2021

Travel Agency Weekly Bookings for Future Travel to Hawai'i as of January 27, 2021
U.S.



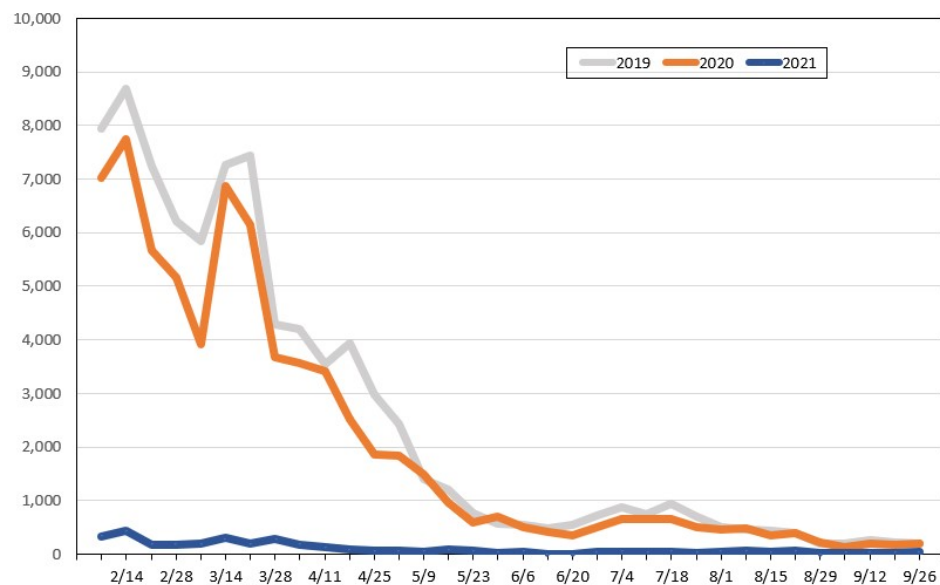
Source: Global Agency Pro, as of January 27, 2021

Travel Agency Weekly Bookings for Future Travel to Hawai'i as of January 27, 2021
Japan



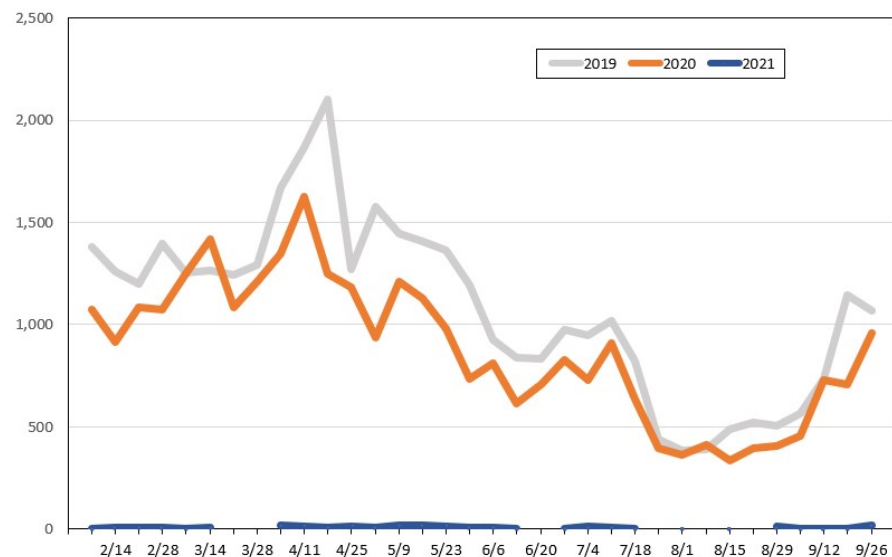
Source: Global Agency Pro, as of January 27, 2021

Travel Agency Weekly Bookings for Future Travel to Hawai'i as of January 27, 2021
Canada



Source: Global Agency Pro, as of January 27, 2021

Travel Agency Weekly Bookings for Future Travel to Hawai'i as of January 27, 2021
Australia



Source: Global Agency Pro, as of January 27, 2021