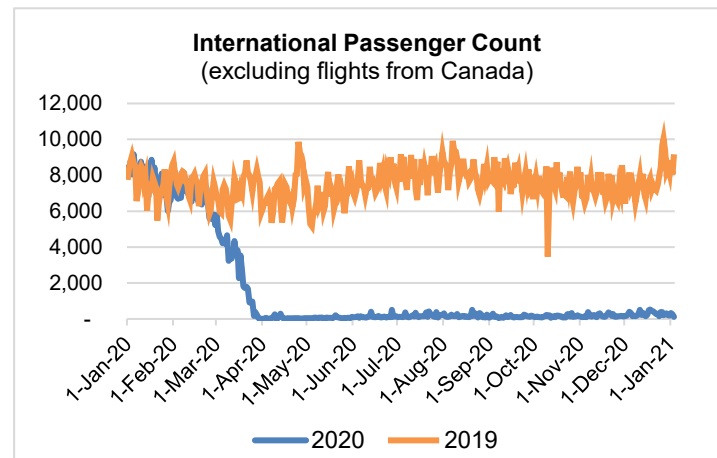
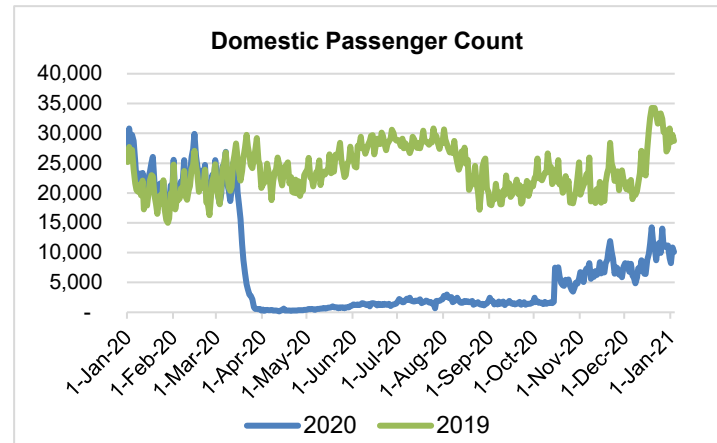
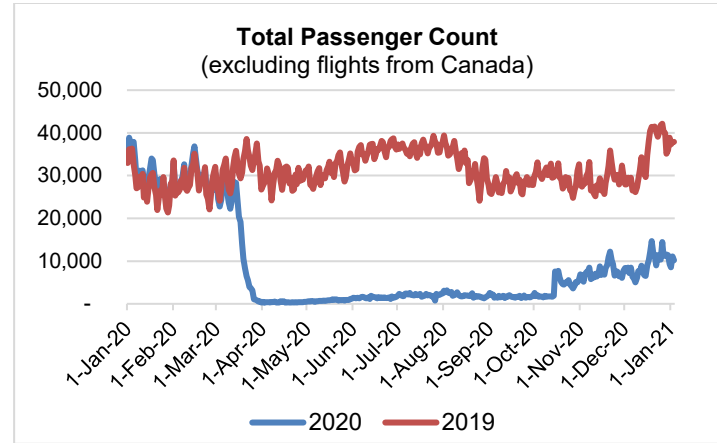


HTA COVID-19 UPDATE

(Issued: 1/4/21 @ 2:30pm)

Reason for Trip by Arrival Airport - Transpacific Screened Passengers as of 01/03/21	Honolulu (HNL)	Kahului (OGG)	Kona (KOA)	Lihue (LIH)	Grand Total
Airline Crew	532	276	135	21	964
Connecting Flight (Transit)	478	11	1	1	491
Corporate Meeting	18	0	0	0	18
Essential Worker	328	55	19	10	412
Honeymoon	8	7	2	0	17
Incentive Trip	1	0	1	0	2
Intended Resident	133	30	26	0	189
Military or Federal Government	583	2	1	1	587
Other	73	22	4	1	100
Other Business	80	29	22	1	132
Pleasure/Vacation	1,175	1,720	627	18	3,540
Returning Resident	4,131	363	317	59	4,870
Sports Event	3	41	0	0	44
To Attend School	76	3	31	0	110
To Get Married	4	1	0	0	5
Transit	1	0	0	0	1
Visiting Friends or Relatives	408	99	126	5	638
Grand Total	8,032	2,659	1,312	117	12,120

Source: Safe Travels program developed by the State of Hawaii Office of Enterprise Technology Services
Note: The data is preliminary and subject to change



Daily Passenger Count Table

01/03/2021	Domestic	International	Total
Oahu	6641	117	6758
Maui	2253		2253
Island of Hawaii	1117		1117
Kauai	90		90
State	10101	117	10218

Novel Coronavirus in Hawaii

COVID-19 Positive Cases

Cumulative totals as of 12:00pm on January 4, 2021

Total Confirmed Cases	22,045* (89 new)
Hawaii	1,926
Kauai	150
Lanai	106
Maui	1070†
Molokai	22
Oahu	18,340
Out of State	431
Pending	0
Required Hospitalization	1488‡
Hawaii Deaths	289
Cases in the past 14 days	1,598**

Footnotes for COVID-19 Cases

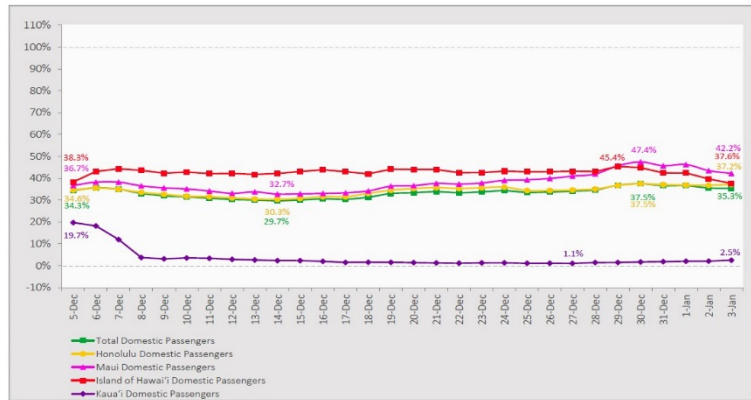
*As a result of updated information, one case on Maui was recategorized to out-of-state.

**Using cases reported in the past 14 days provides a rough approximation of the number of cases currently meeting criteria for isolation. This proxy number for "active cases" resolves classification issues for cases unable to be reached or who are out of jurisdiction, for whom precise release from isolation date may not be possible to determine. It is also not influenced by lags in data entry. (This total does not include Hawaii residents diagnosed outside of Hawaii)

‡Includes Hawaii residents hospitalized out of state.

7-Day Domestic by Island Moving Average Daily Passenger Volume

2021 Volume as Percentage of 2020 Volume
Through January 3, 2021



Source: HVCB analysis based on data from DBEDT
Note: Passenger volume figures include both visitors and residents.

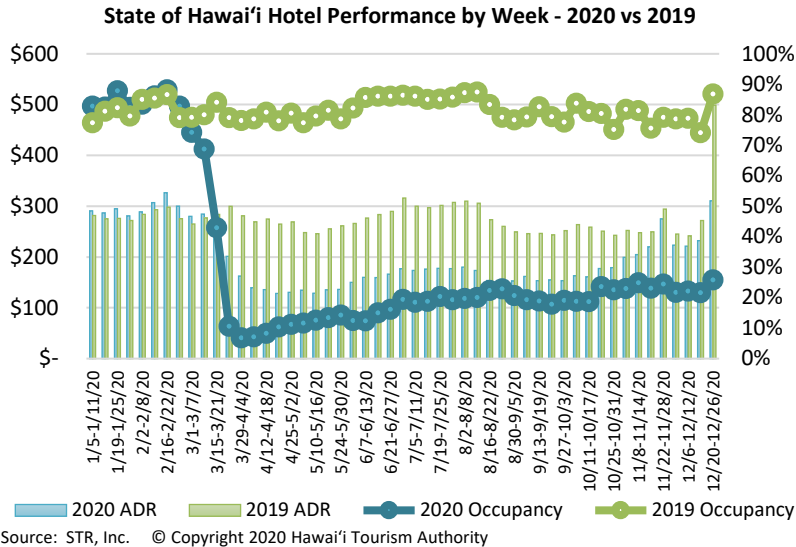
Domestic by Island Month-to-Date and Year-to-Date Daily Passenger Volume

2021 Volume versus 2020 Volume
Through January 3, 2021

January 2021 (Month-to-Date through January 3)				
	2021	2020	Volume Change	Percent Change
Honolulu	17,788	48,842	-31,054	-63.6%
Maui County	7,733	19,010	-11,277	-59.3%
Island of Hawai'i	3,455	10,970	-7,515	-68.5%
Kaua'i	194	8,013	-7,819	-97.6%
Total	29,170	86,835	-57,665	-66.4%

2020 (Year-to-Date through January 3)				
	2021	2020	Volume Change	Percent Change
Honolulu	17,788	48,842	-31,054	-63.6%
Maui County	7,733	19,010	-11,277	-59.3%
Island of Hawai'i	3,455	10,970	-7,515	-68.5%
Kaua'i	194	8,013	-7,819	-97.6%
Total	29,170	86,835	-57,665	-66.4%

Source: HVCB analysis based on data from DBEDT
Note: Passenger volume figures include both visitors and residents. Total includes other international passengers. 2020 includes one additional day due to Leap Year (February 29th, 2020).

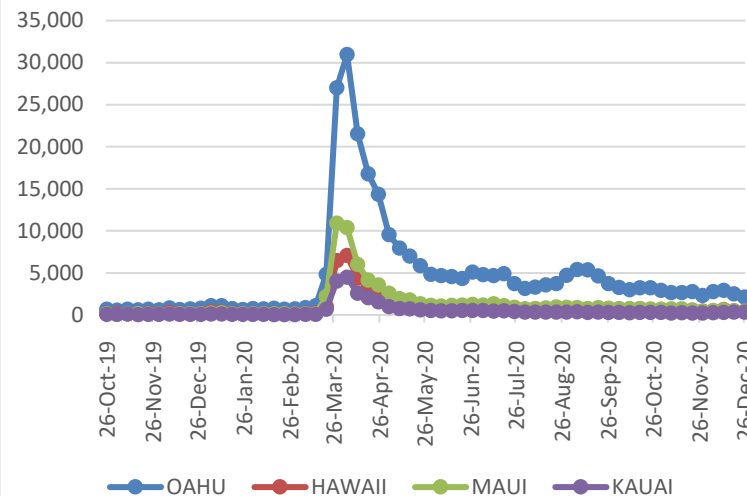


Hawaii Hotel Performance Info:

For the week of December 20 – December 26, 2020

	Occupancy	ADR	RevPAR
State of Hawaii	25.8%	\$ 310.61	\$ 80.05
Oahu	25.3%	\$ 189.64	\$ 47.88
Maui County	27.1%	\$ 539.33	\$ 146.26
Kauai County	13.0%	\$ 164.92	\$ 21.49
Island of Hawaii	33.4%	\$ 373.75	\$ 124.74

2020 Initial Weekly Unemployment Claims by Island



Weekly Unemployment Initial Claims: December 26, 2020

State of Hawaii	3,472
C&C of Oahu	2,147
Hawaii County	418
Maui County	468
Kauai County	346
Agent (filed in Hawaii against another state)	93

News Highlights

January 4, 2021

Honolulu Star Advertiser: [COVID infection rate on the rise in Hawaii](#)

KHON2: [UH Manoa professor finds mask-wearing dependent on what others are doing](#)

Big Island Now: [State Laboratory Guarding Against New COVID-19 Strains](#)

The Garden Island: [No new virus cases Sunday](#)

The Maui News: [Masks required outdoors within 6 feet of others](#)

West Hawaii Today: [Tracking tourism: Visitor counts, spending ticking up on Hawaii Island](#)

Travel Weekly: [Air ticket sales trending upward](#)

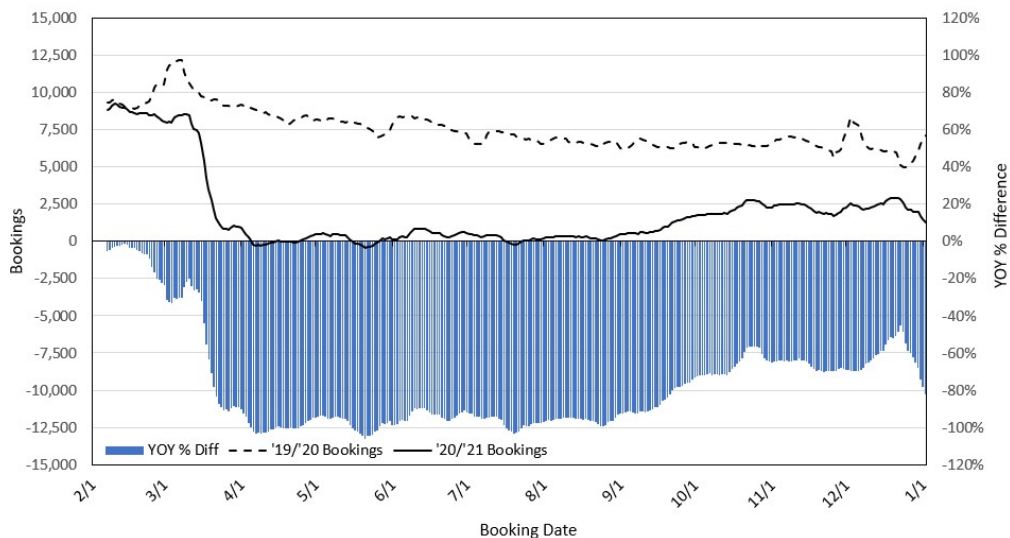
KTLA5: [L.A. County's new mandatory quarantine order for long-distance travelers is now official](#)

SF Gate: [Coughing, sneezing, vomiting: Visibly ill people aren't being kept off planes](#)

National Geographic: [What vaccines mean for the return of travel](#)

Travel Pulse: [The Safest Places to Travel in 2021](#)

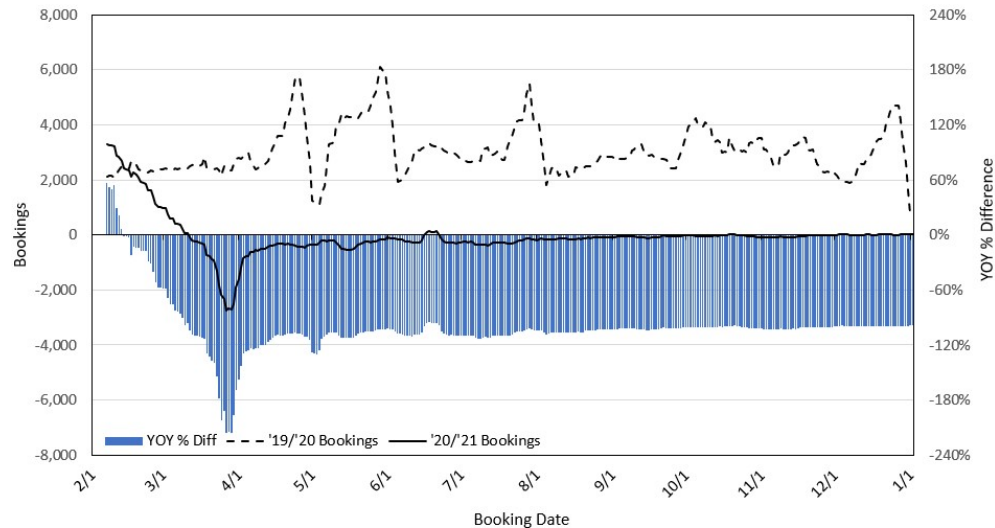
Travel Agency Bookings to Hawaii for Future Arrivals* Based on a 7-day Moving Average, 2021 vs 2020 U.S.



*Future Arrivals refers to all arrivals that are 'future' relative to the referenced booking date.
Source: Global Agency Pro

Update: Jan 2, 2021

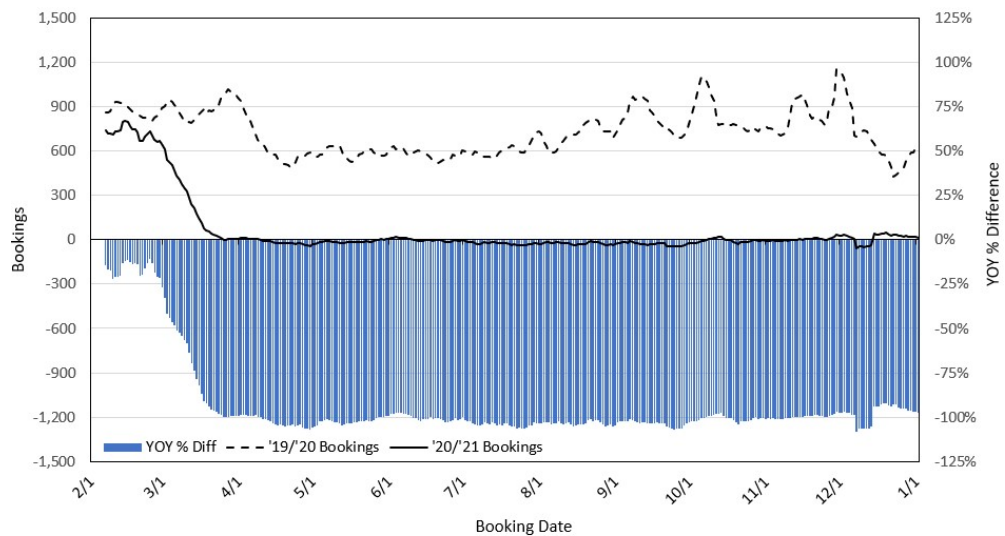
Travel Agency Bookings to Hawaii for Future Arrivals* Based on a 7-day Moving Average, 2020 vs 2019 Japan



*Future Arrivals refers to all arrivals that are 'future' relative to the referenced booking date.
Source: Global Agency Pro

Update: Jan 2, 2021

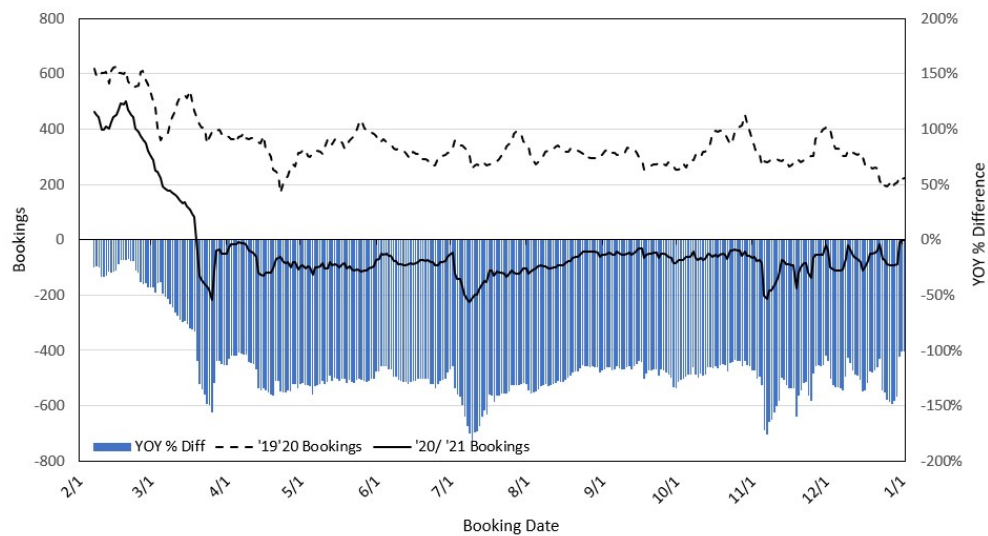
Travel Agency Bookings to Hawaii for Future Arrivals* Based on a 7-day Moving Average, 2020 vs 2019 Canada



*Future Arrivals refers to all arrivals that are 'future' relative to the referenced booking date.
Source: Global Agency Pro

Update: Jan 2, 2021

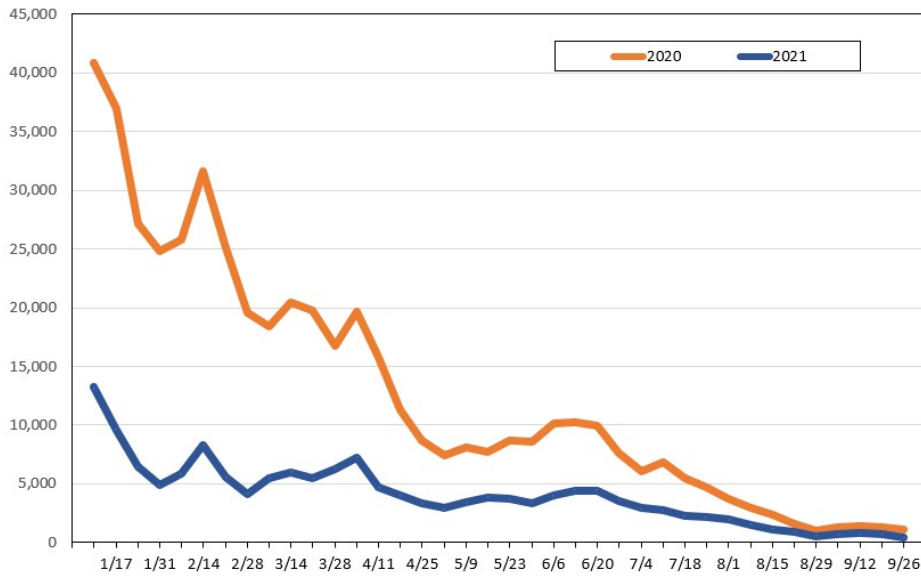
Travel Agency Bookings to Hawaii for Future Arrivals* Based on a 7-day Moving Average, 2020 vs 2019 Australia



*Future Arrivals refers to all arrivals that are 'future' relative to the referenced booking date.
Source: Global Agency Pro

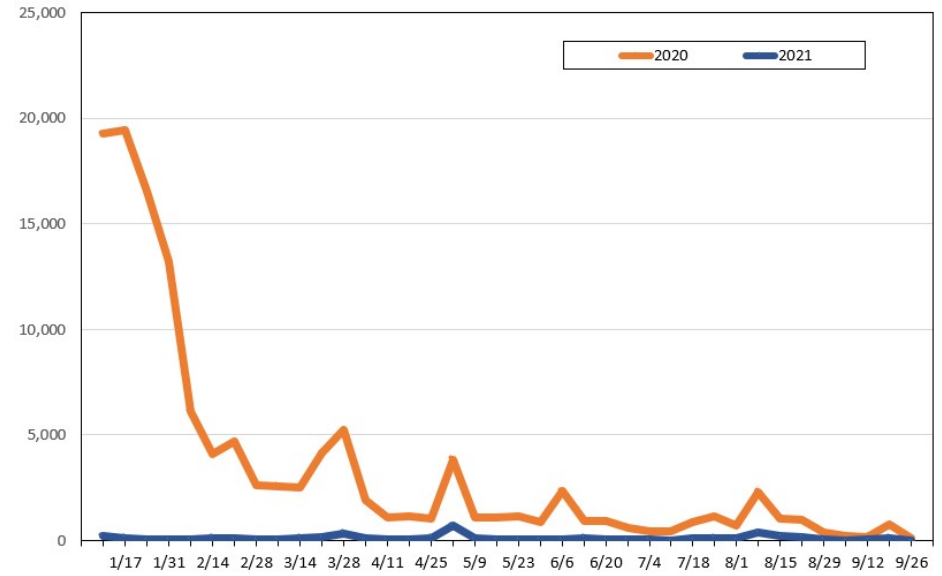
Update: Jan 2, 2021

Travel Agency Weekly Bookings for Future Travel to Hawai'i as of January 2, 2021
U.S.



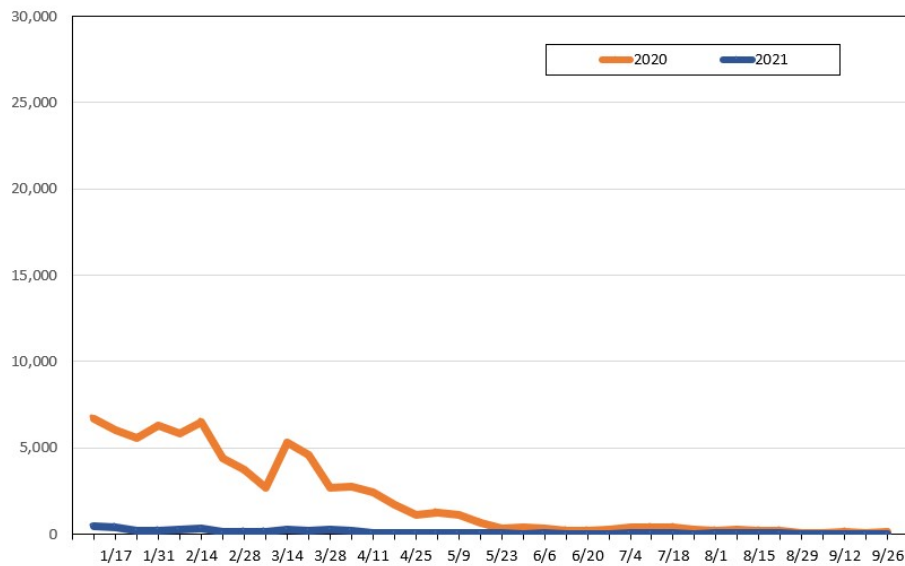
Source: Global Agency Pro, as of January 2, 2021

Travel Agency Weekly Bookings for Future Travel to Hawai'i as of January 2, 2021
Japan



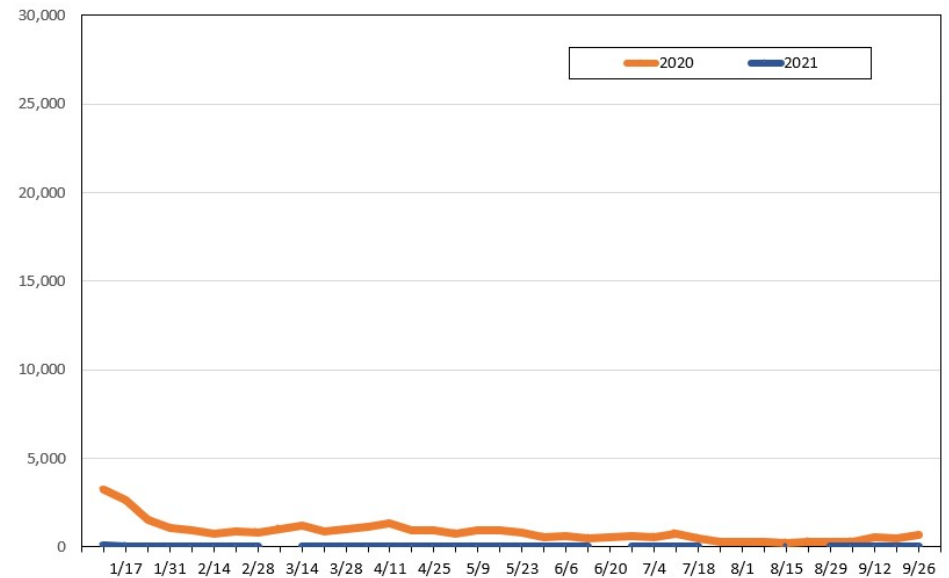
Source: Global Agency Pro, as of January 2, 2021

Travel Agency Weekly Bookings for Future Travel to Hawai'i as of January 2, 2021
Canada



Source: Global Agency Pro, as of January 2, 2021

Travel Agency Weekly Bookings for Future Travel to Hawai'i as of January 2, 2021
Australia



Source: Global Agency Pro, as of January 2, 2021