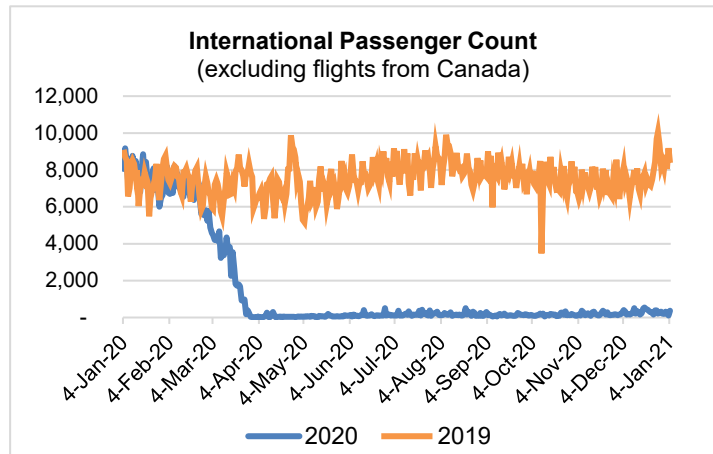
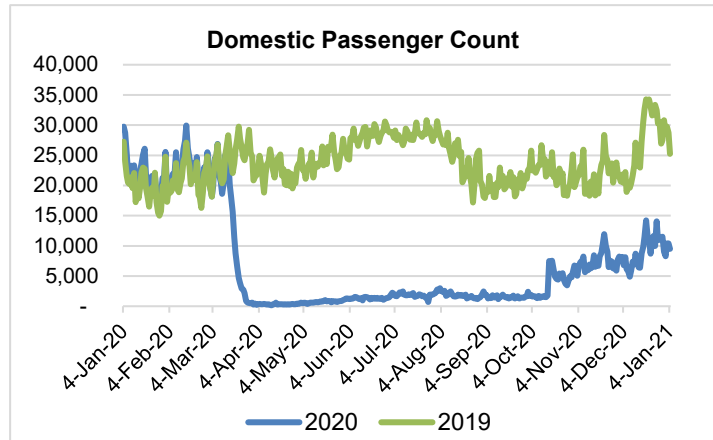
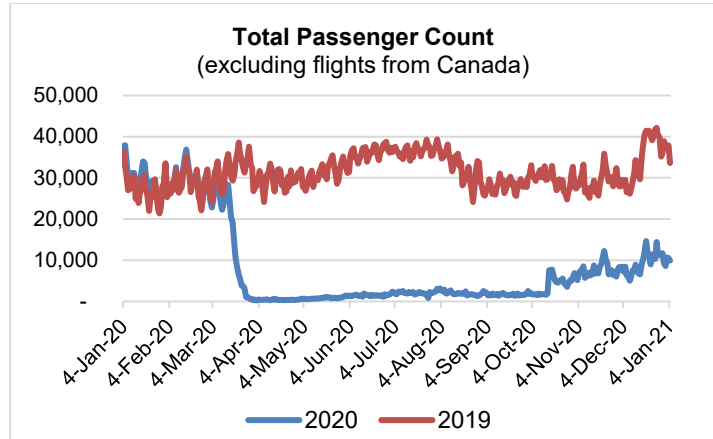


HTA COVID-19 UPDATE

(Issued: 1/5/21 @ 2:30pm)

| Reason for Trip by Arrival Airport - Transpacific Screened Passengers as of 01/04/21 | Honolulu (HNL) | Kahului (OGG) | Kona (KOA) | Lihue (LIH) | Grand Total |
|--|----------------|---------------|--------------|-------------|---------------|
| Airline Crew | 586 | 217 | 122 | 15 | 940 |
| Connecting Flight (Transit) | 418 | 20 | 2 | 2 | 442 |
| Corporate Meeting | 3 | 1 | 0 | 0 | 4 |
| Essential Worker | 214 | 42 | 26 | 8 | 290 |
| Honeymoon | 10 | 14 | 2 | 0 | 26 |
| Incentive Trip | 1 | 0 | 0 | 0 | 1 |
| Intended Resident | 138 | 16 | 27 | 8 | 189 |
| Military or Federal Government | 282 | 0 | 2 | 4 | 288 |
| Other | 69 | 19 | 13 | 1 | 102 |
| Other Business | 69 | 32 | 19 | 3 | 123 |
| Pleasure/Vacation | 1,533 | 1,350 | 656 | 13 | 3,552 |
| Returning Resident | 3,214 | 322 | 301 | 76 | 3,913 |
| Sports Event | 4 | 29 | 3 | 0 | 36 |
| To Attend School | 185 | 1 | 13 | 0 | 199 |
| To Get Married | 9 | 0 | 0 | 0 | 9 |
| Visiting Friends or Relatives | 598 | 162 | 126 | 15 | 901 |
| Grand Total | 7,333 | 2,225 | 1,312 | 145 | 11,015 |

Source: Safe Travels program developed by the State of Hawaii Office of Enterprise Technology Services
Note: The data is preliminary and subject to change



Daily Passenger Count Table

| 01/04/2021 | Domestic | International | Total |
|------------------|----------|---------------|-------|
| Oahu | 6365 | 377 | 6742 |
| Maui | 1889 | | 1889 |
| Island of Hawaii | 1124 | | 1124 |
| Kauai | 122 | | 122 |
| State | 9500 | 377 | 9877 |

Novel Coronavirus in Hawaii

COVID-19 Positive Cases

Cumulative totals as of 12:00pm on January 5, 2021

| Total Confirmed Cases | 22,168* (124 new) |
|---------------------------|-------------------|
| Hawaii | 1,938 |
| Kauai | 150 |
| Lanai | 106 |
| Maui | 1091† |
| Molokai | 22 |
| Oahu | 18,414 |
| Out of State | 447 |
| Pending | 0 |
| Required Hospitalization | 1498‡ |
| Hawaii Deaths | 289 |
| Cases in the past 14 days | 1,642** |

Footnotes for COVID-19 Cases

*As a result of updated information, one case on Kauai was removed from the counts.

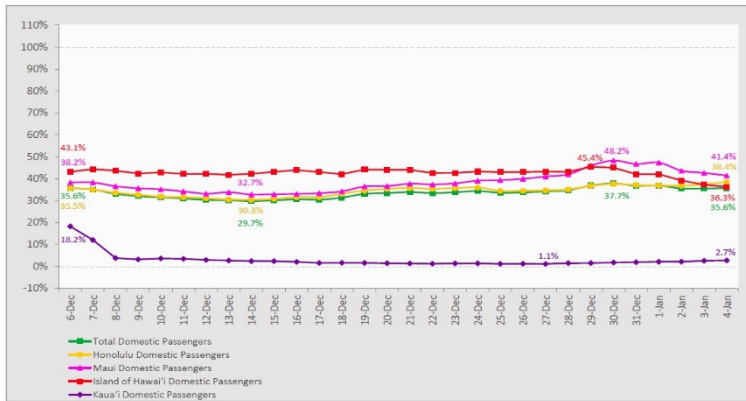
**Using cases reported in the past 14 days provides a rough approximation of the number of cases currently meeting criteria for isolation. This proxy number for "active cases" resolves classification issues for cases unable to be reached or who are out of jurisdiction, for whom precise release from isolation date may not be possible to determine. It is also not influenced by lags in data entry. (This total does not include Hawaii residents diagnosed outside of Hawaii)

† One case is a Lanai resident whose exposure is on Maui Island and who will be remaining on Maui Island for the interim.

‡Includes Hawaii residents hospitalized out of state.

7-Day Domestic by Island Moving Average Daily Passenger Volume

2021 Volume as Percentage of 2020 Volume
Through January 4, 2021



Source: HVCB analysis based on data from DBEDT
Note: Passenger volume figures include both visitors and residents.

Domestic by Island Month-to-Date and Year-to-Date Daily Passenger Volume

2021 Volume versus 2020 Volume
Through January 4, 2021

January 2021 (Month-to-Date through January 4)

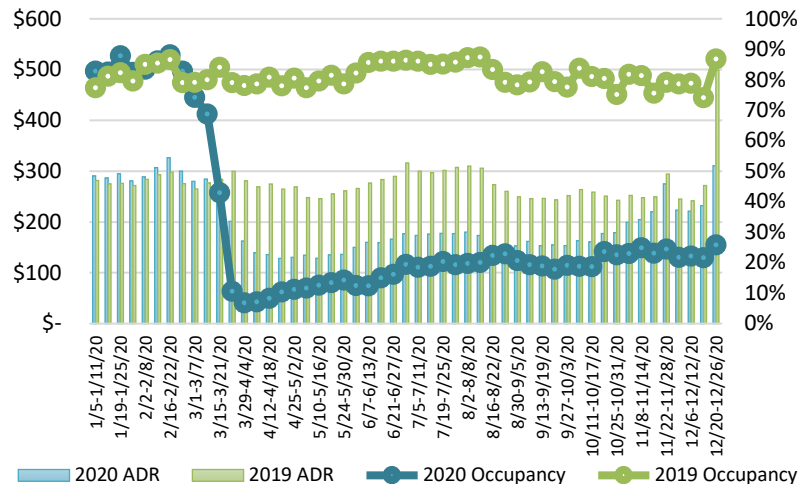
| | 2021 | 2020 | Volume Change | Percent Change |
|-------------------|---------------|----------------|----------------|----------------|
| Honolulu | 24,330 | 64,720 | -40,390 | -62.4% |
| Maui County | 9,318 | 26,689 | -17,371 | -65.1% |
| Island of Hawai'i | 4,589 | 14,335 | -9,746 | -68.0% |
| Kaua'i | 316 | 10,845 | -10,529 | -97.1% |
| Total | 38,553 | 116,589 | -78,036 | -66.9% |

2020 (Year-to-Date through January 4)

| | 2021 | 2020 | Volume Change | Percent Change |
|-------------------|---------------|----------------|----------------|----------------|
| Honolulu | 24,330 | 64,720 | -40,390 | -62.4% |
| Maui County | 9,318 | 26,689 | -17,371 | -65.1% |
| Island of Hawai'i | 4,589 | 14,335 | -9,746 | -68.0% |
| Kaua'i | 316 | 10,845 | -10,529 | -97.1% |
| Total | 38,553 | 116,589 | -78,036 | -66.9% |

Source: HVCB analysis based on data from DBEDT
Note: Passenger volume figures include both visitors and residents. Total includes other international passengers. 2020 includes one additional day due to Leap Year (February 29th, 2020).

State of Hawai'i Hotel Performance by Week - 2020 vs 2019



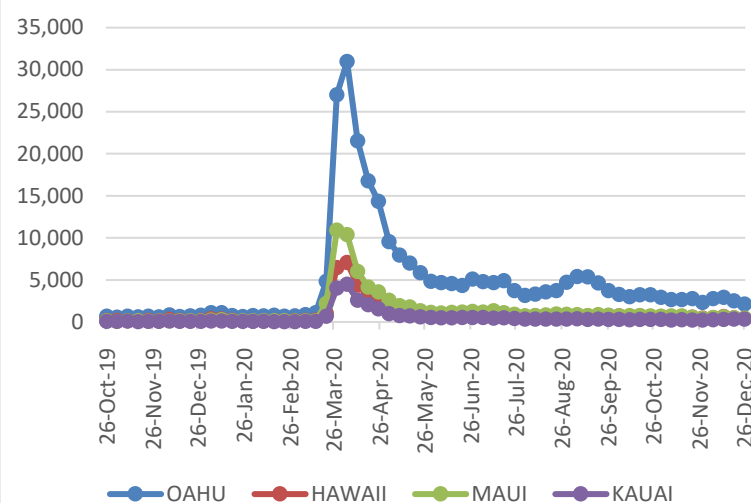
Source: STR, Inc. © Copyright 2020 Hawai'i Tourism Authority

Hawaii Hotel Performance Info:

For the week of December 20 – December 26, 2020

| | Occupancy | ADR | RevPAR |
|-------------------------|-----------|-----------|-----------|
| State of Hawaii | 25.8% | \$ 310.61 | \$ 80.05 |
| Oahu | 25.3% | \$ 189.64 | \$ 47.88 |
| Maui County | 27.1% | \$ 539.33 | \$ 146.26 |
| Kauai County | 13.0% | \$ 164.92 | \$ 21.49 |
| Island of Hawaii | 33.4% | \$ 373.75 | \$ 124.74 |

2020 Initial Weekly Unemployment Claims by Island



Weekly Unemployment Initial Claims: December 26, 2020

| | |
|--|-------|
| State of Hawaii | 3,472 |
| C&C of Oahu | 2,147 |
| Hawaii County | 418 |
| Maui County | 468 |
| Kauai County | 346 |
| Agent (filed in Hawaii against another state) | 93 |

News Highlights

January 5, 2021

Hawaii News Now: [Late deliveries, holiday season behind slow speed of state's coronavirus vaccine rollout](#)

KHON2: [Los Angeles County hospitalization surge, travel quarantine could impact Hawaii's tourism](#)

The Maui News: [Maui visitors nearly triple from October to November](#)

The Garden Island: [Vaccine rollout continues on Kauai](#)

Hawaii Magazine: [Want to Travel to Kauai? Stay in a 'Resort Bubble'](#)

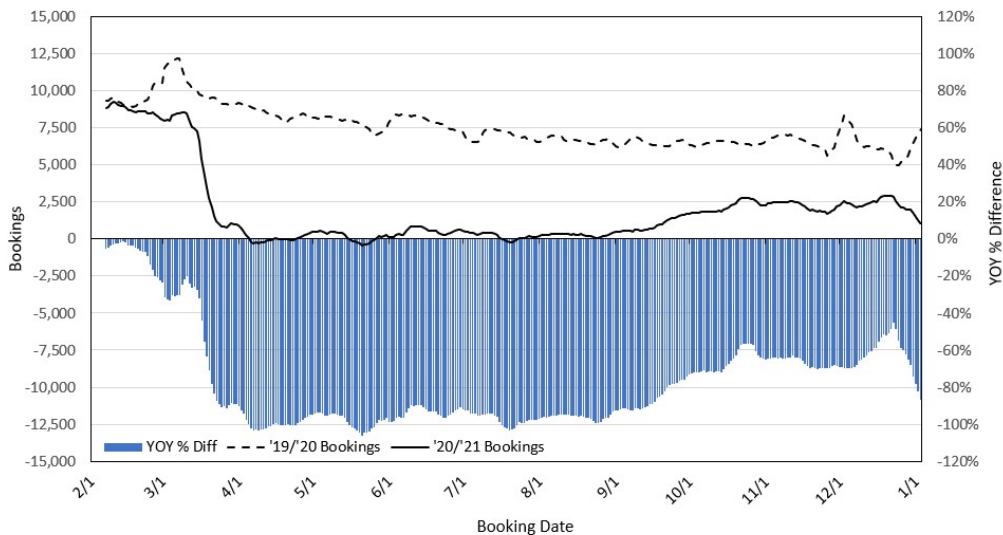
The Orange County Register: [Traveling to Hawaii during COVID-19: Requirements and what to know before you go](#)

Travel Pulse: [COVID-19 US Travel Restrictions: State-By-State Guide for January 2021](#)

Travel Weekly: [In-room Covid-19 testing is a hotel amenity on the rise in the new year](#)

Travel Pulse: [Top 20 Safest Airlines for 2021](#)

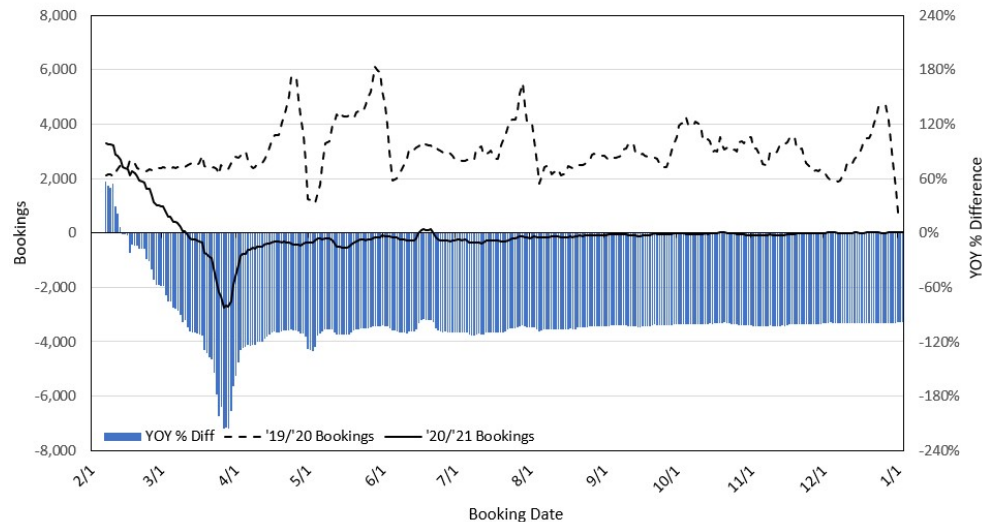
Travel Agency Bookings to Hawaii for Future Arrivals* Based on a 7-day Moving Average, 2021 vs 2020 U.S.



*Future Arrivals refers to all arrivals that are 'future' relative to the referenced booking date.
Source: Global Agency Pro

Update: Jan 3, 2021

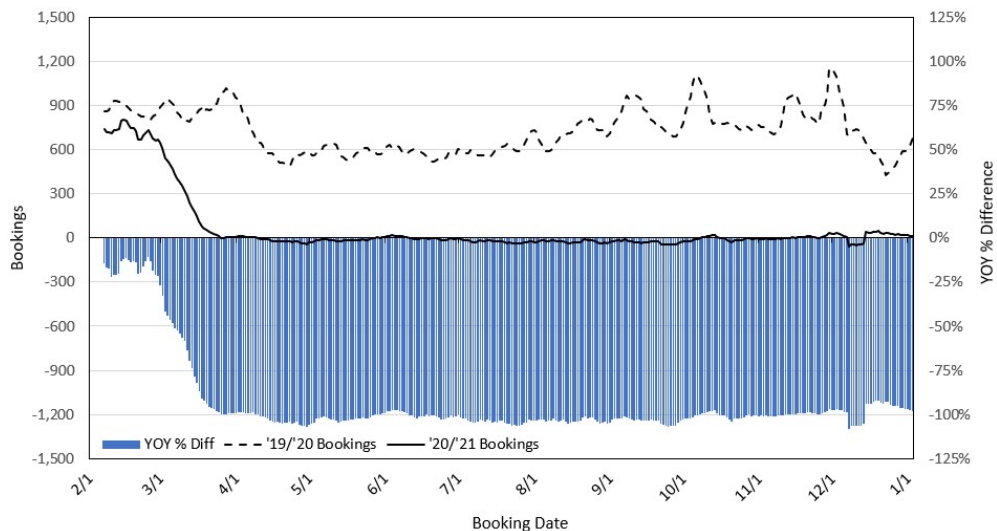
Travel Agency Bookings to Hawaii for Future Arrivals* Based on a 7-day Moving Average, 2020 vs 2019 Japan



*Future Arrivals refers to all arrivals that are 'future' relative to the referenced booking date.
Source: Global Agency Pro

Update: Jan 3, 2021

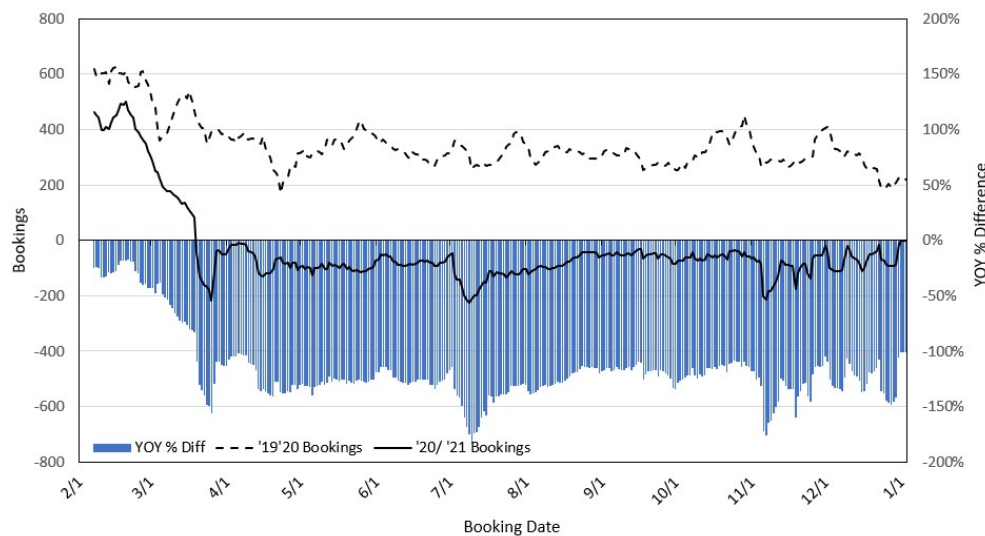
Travel Agency Bookings to Hawaii for Future Arrivals* Based on a 7-day Moving Average, 2020 vs 2019 Canada



*Future Arrivals refers to all arrivals that are 'future' relative to the referenced booking date.
Source: Global Agency Pro

Update: Jan 3, 2021

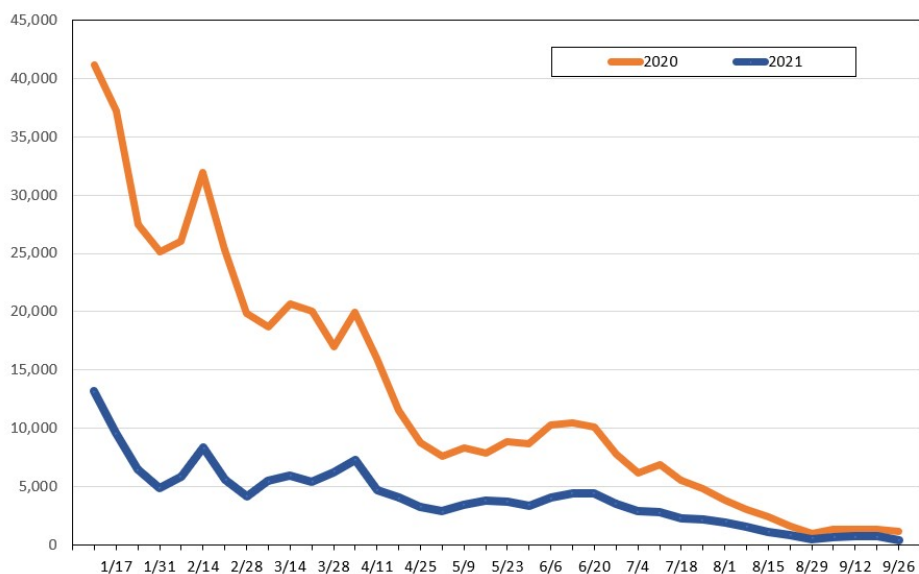
Travel Agency Bookings to Hawaii for Future Arrivals* Based on a 7-day Moving Average, 2020 vs 2019 Australia



*Future Arrivals refers to all arrivals that are 'future' relative to the referenced booking date.
Source: Global Agency Pro

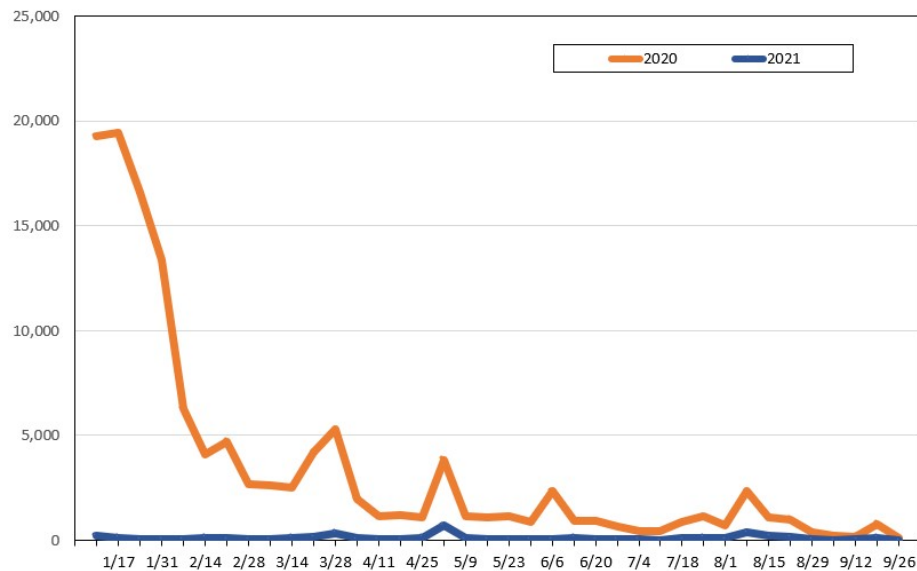
Update: Jan 3, 2021

Travel Agency Weekly Bookings for Future Travel to Hawai'i as of January 3, 2021
U.S.



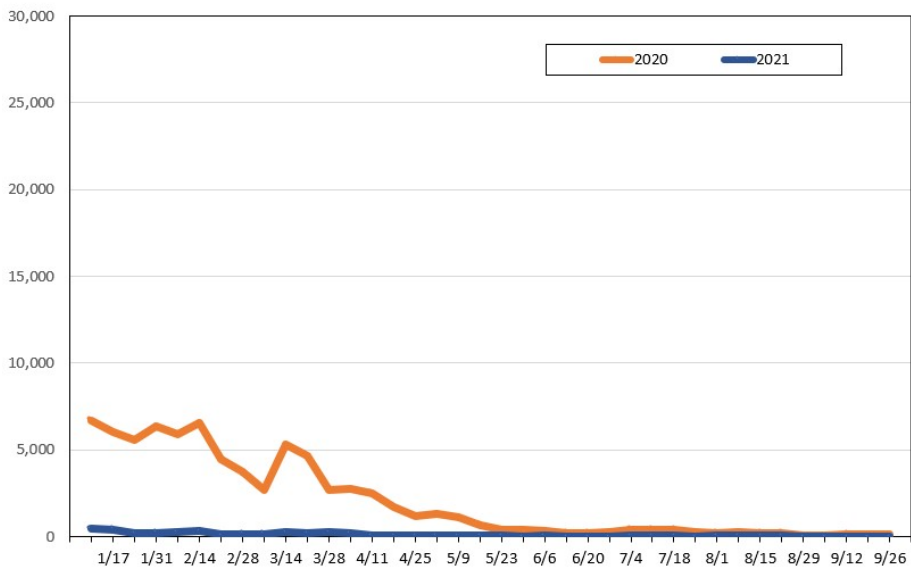
Source: Global Agency Pro, as of January 3, 2021

Travel Agency Weekly Bookings for Future Travel to Hawai'i as of January 3, 2021
Japan



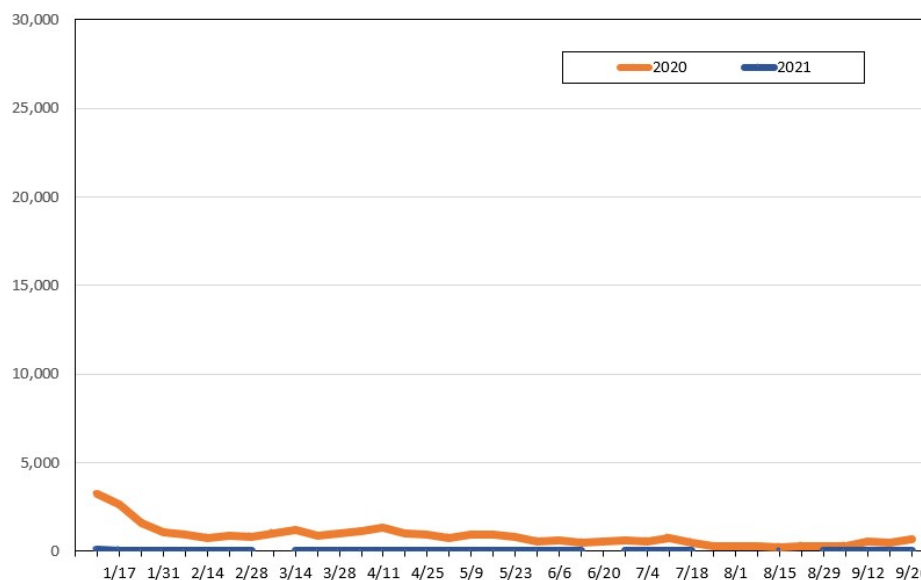
Source: Global Agency Pro, as of January 3, 2021

Travel Agency Weekly Bookings for Future Travel to Hawai'i as of January 3, 2021
Canada



Source: Global Agency Pro, as of January 3, 2021

Travel Agency Weekly Bookings for Future Travel to Hawai'i as of January 3, 2021
Australia



Source: Global Agency Pro, as of January 3, 2021